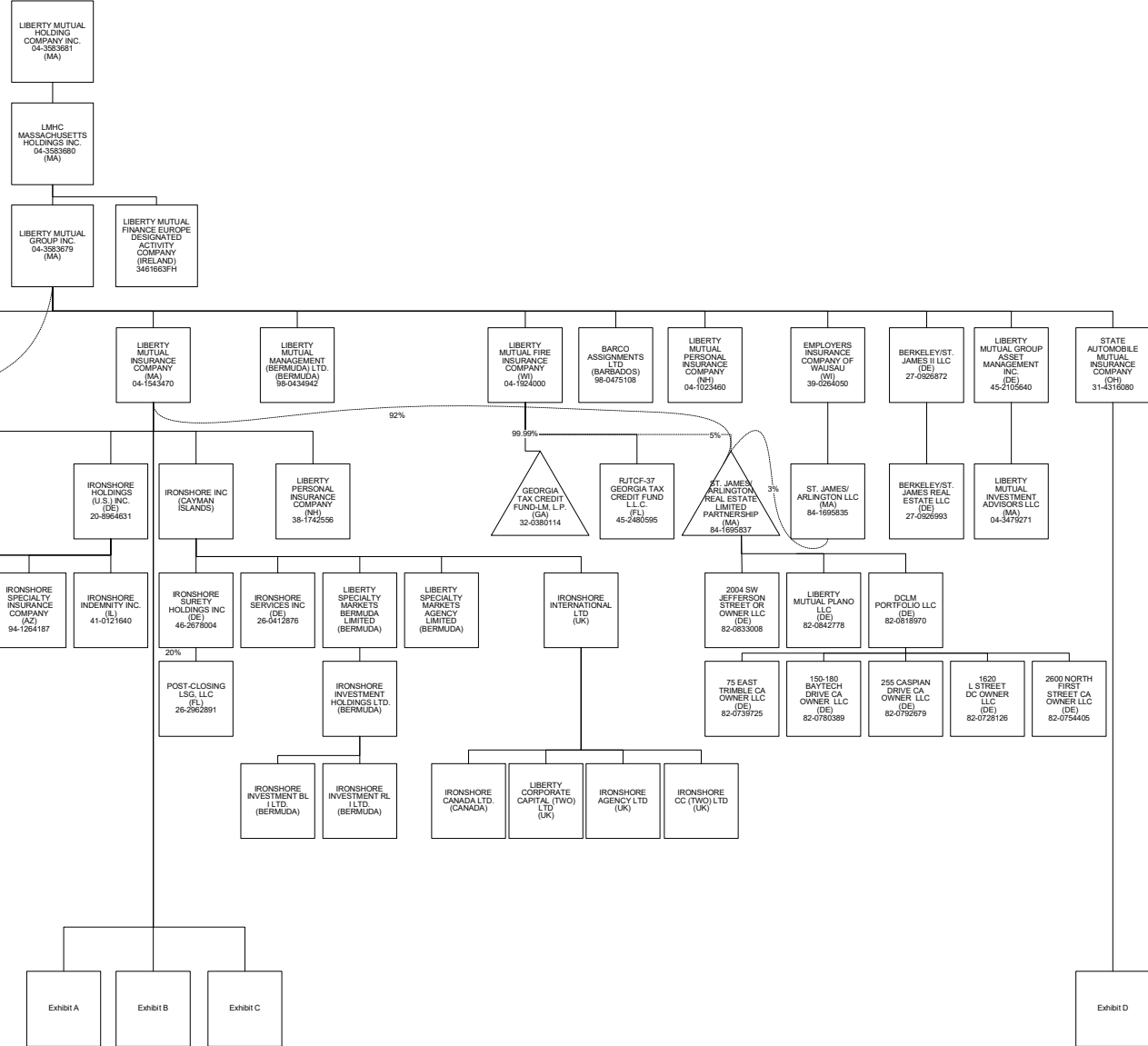
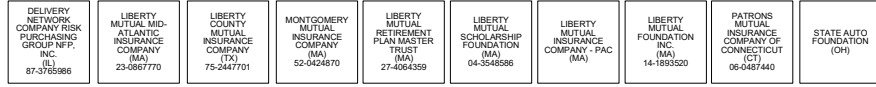
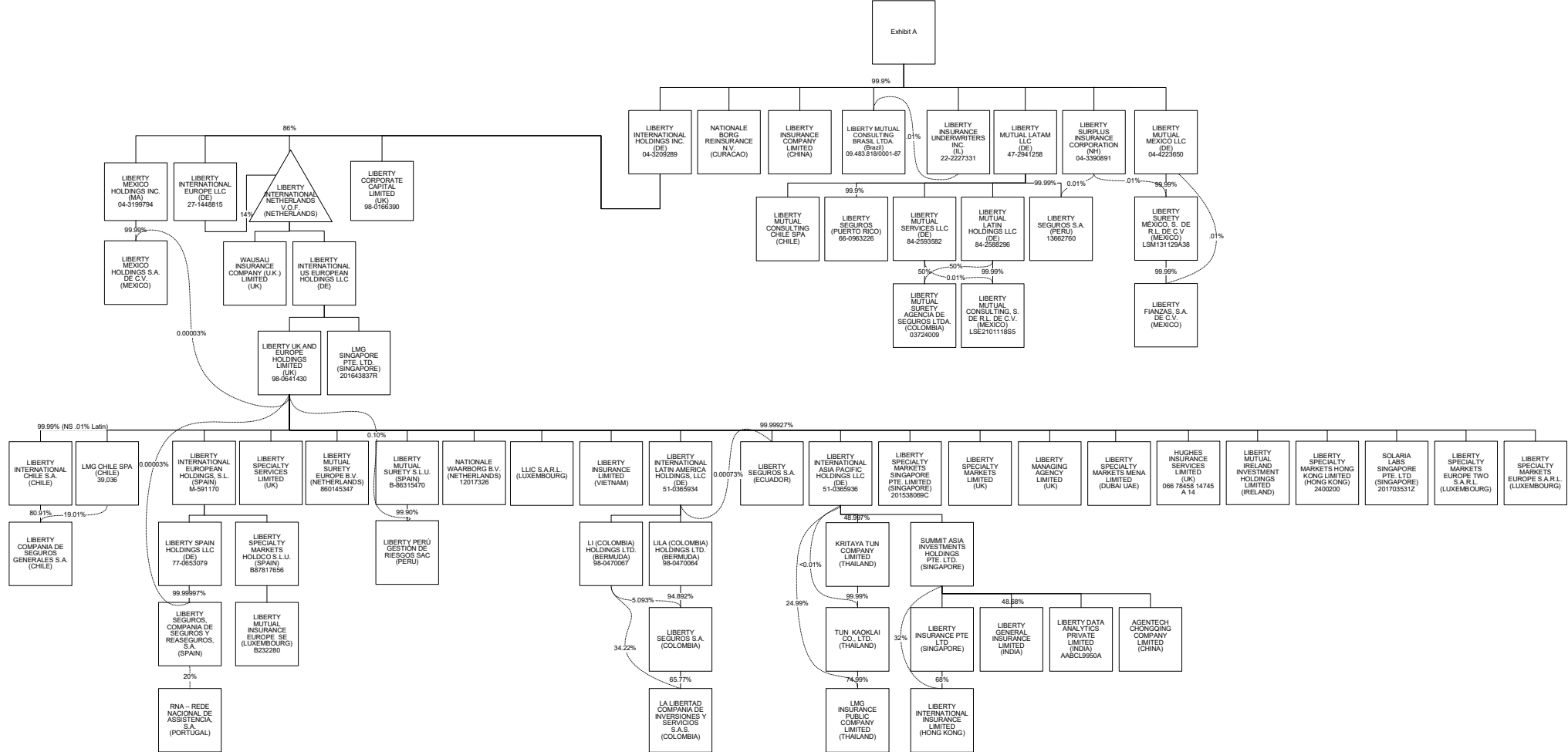


Statement as of December 31, 2023  
 SCHEDULE Y - PART 1 - ORGANIZATIONAL CHART

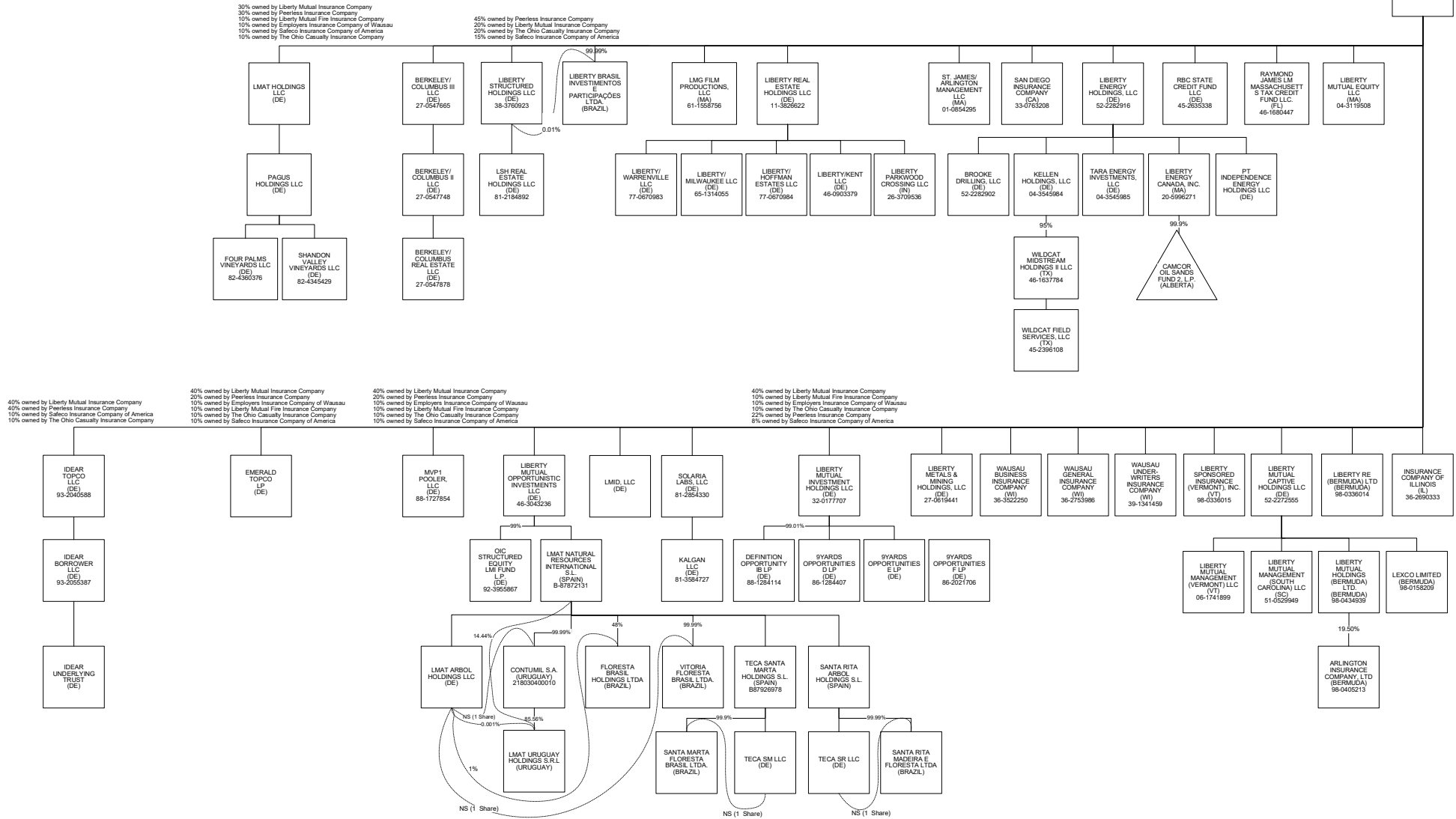


Statement as of December 31, 2023  
 SCHEDULE Y - PART 1 - ORGANIZATIONAL CHART

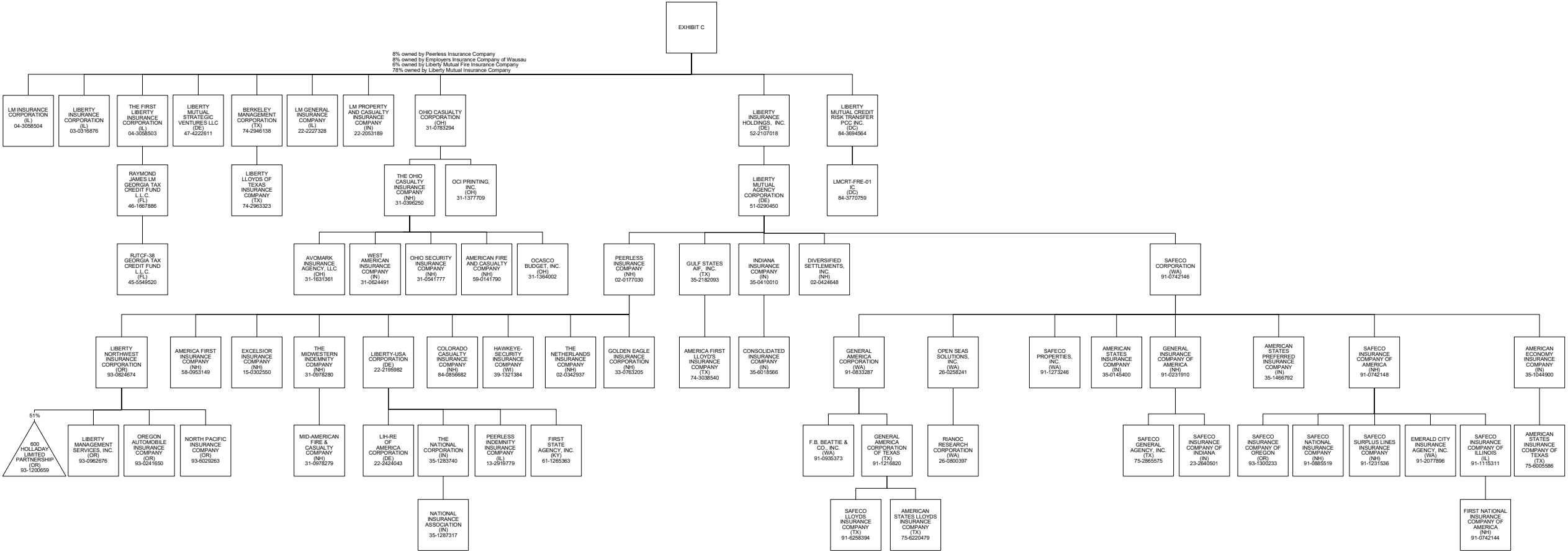


Statement as of December 31, 2023  
 SCHEDULE Y - PART 1 - ORGANIZATIONAL CHART

EXHIBIT B



Statement as of December 31, 2023  
 SCHEDULE Y - PART 1 - ORGANIZATIONAL CHART



Statement as of December 31, 2023  
 SCHEDULE Y - PART 1 - ORGANIZATIONAL CHART

