

Statement as of September 30, 2023

SCHEDULE Y - PART 1 - ORGANIZATIONAL CHART

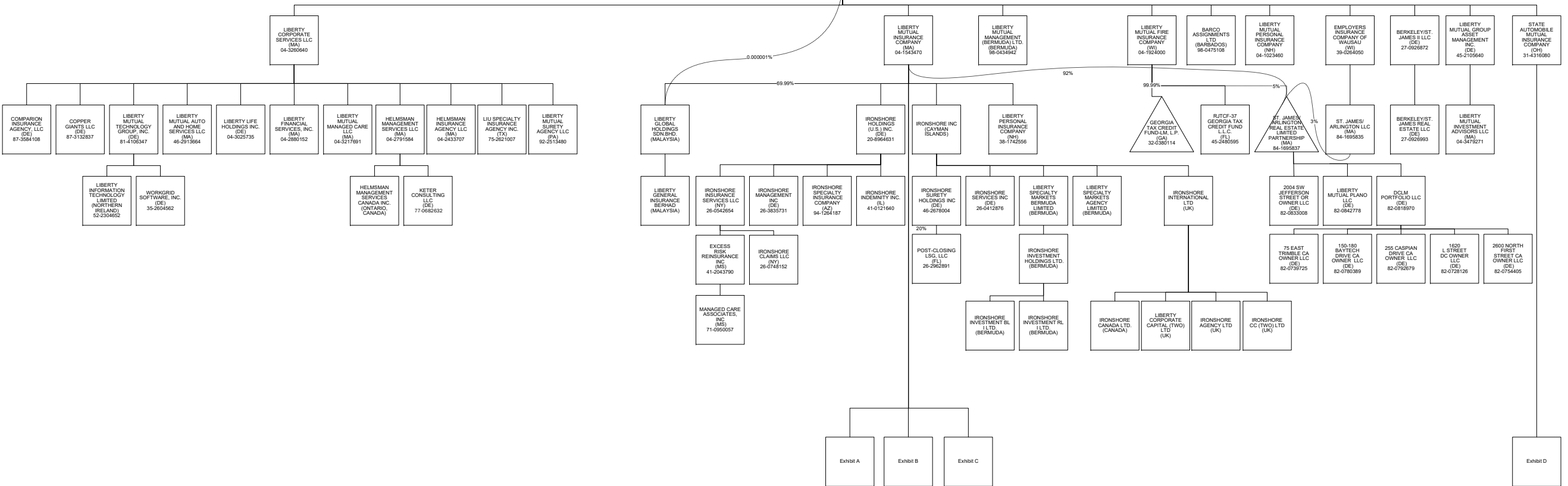
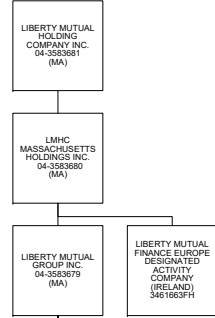
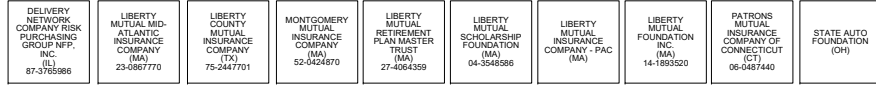


Exhibit A Exhibit B Exhibit C

Exhibit D

Statement as of September 30, 2023

SCHEDULE Y - PART 1 - ORGANIZATIONAL CHART

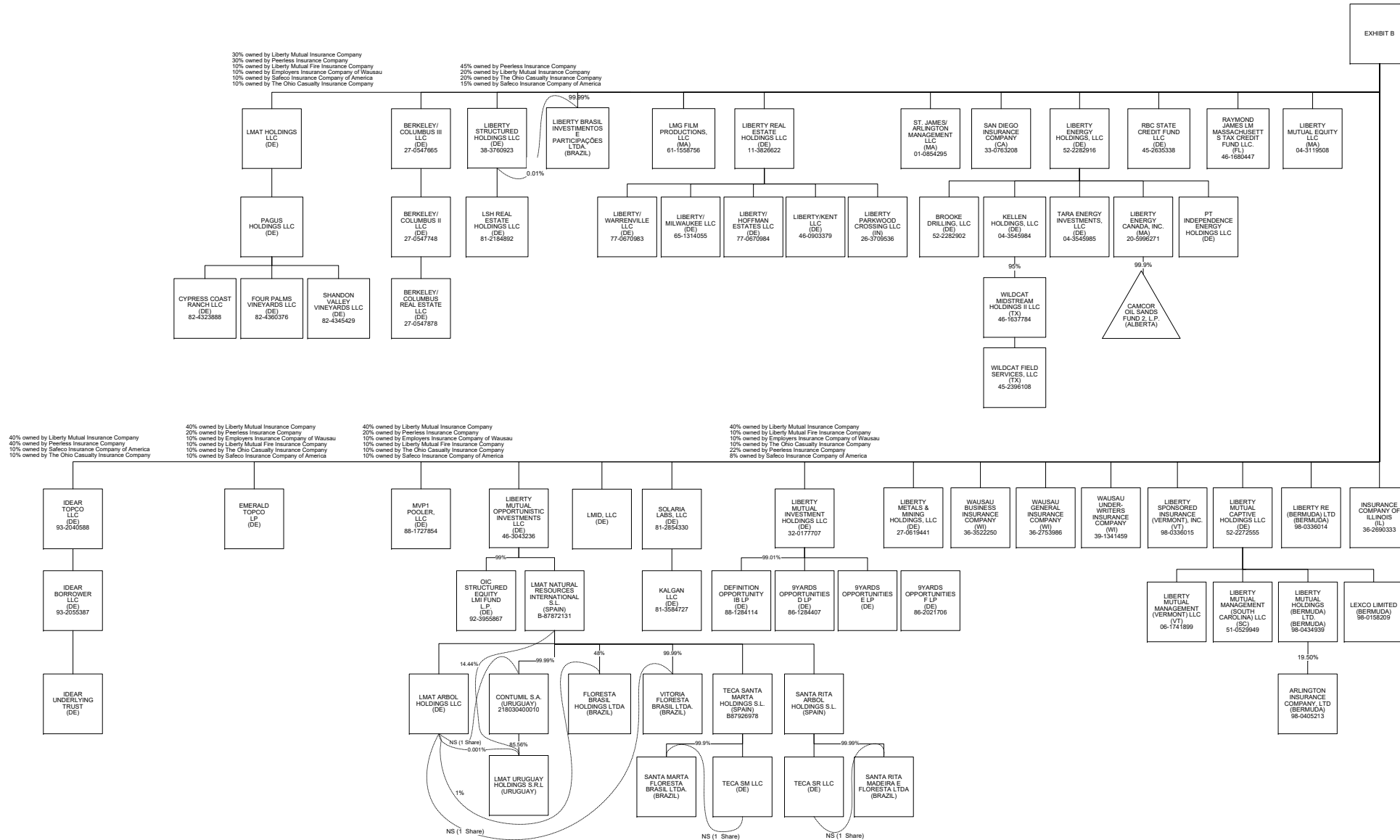
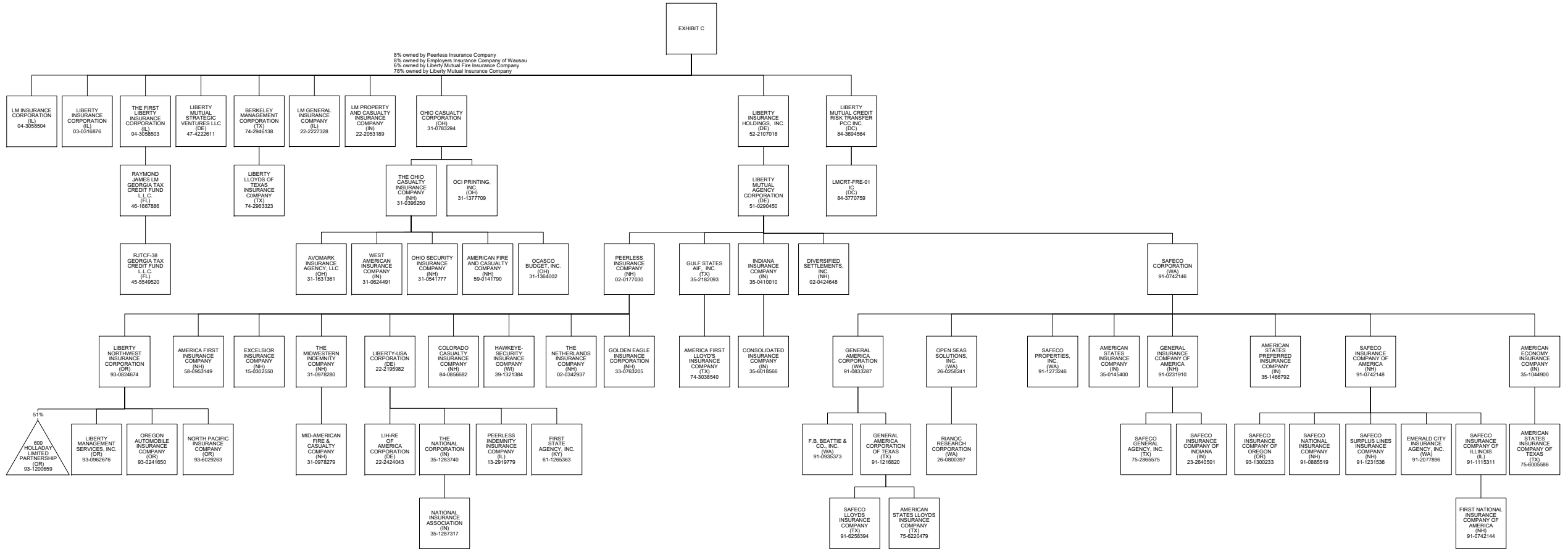


EXHIBIT B

Statement as of September 30, 2023

SCHEDULE Y - PART 1 - ORGANIZATIONAL CHART



Statement as of September 30, 2023

SCHEDULE Y - PART 1 - ORGANIZATIONAL CHART

