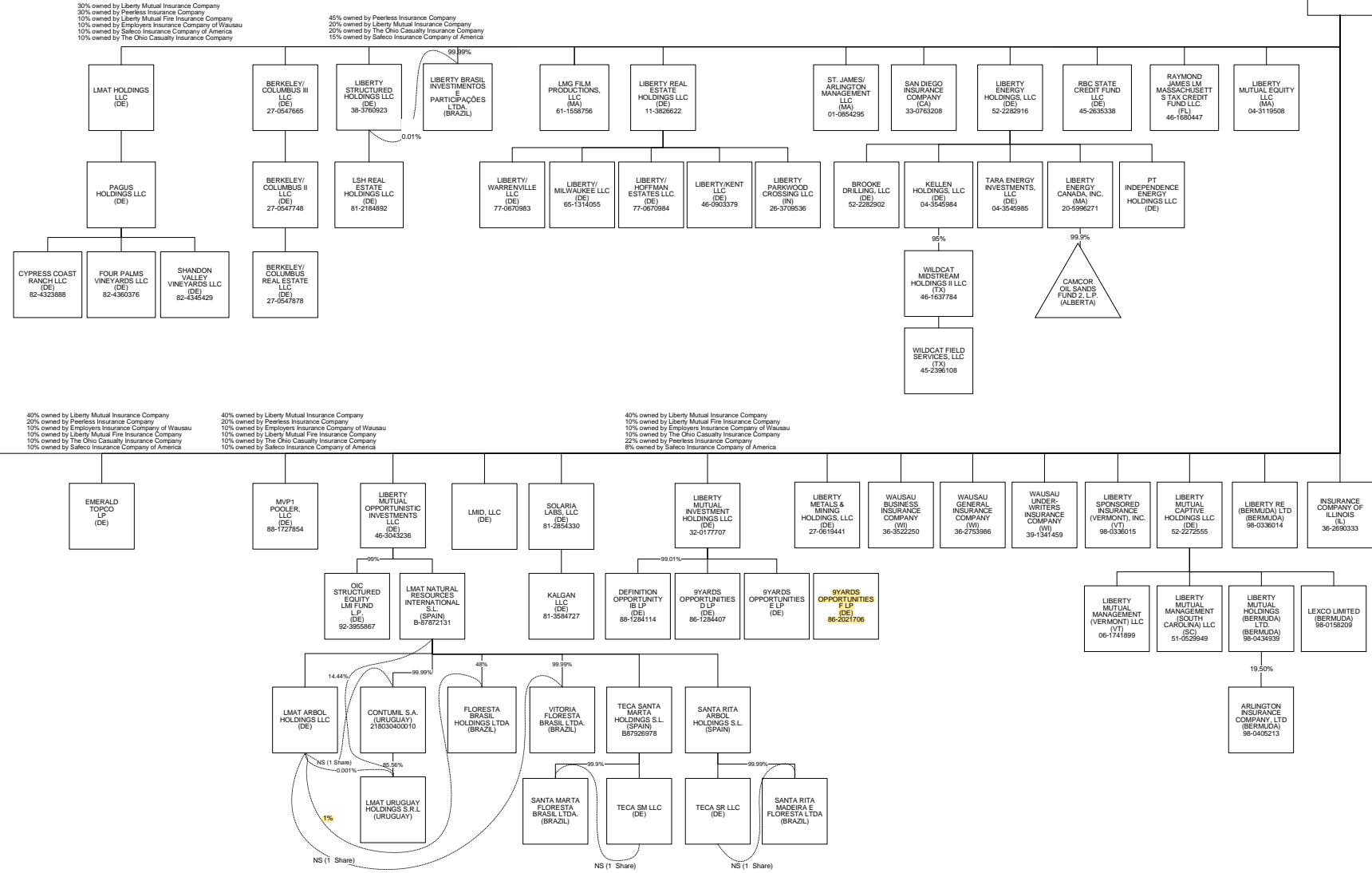


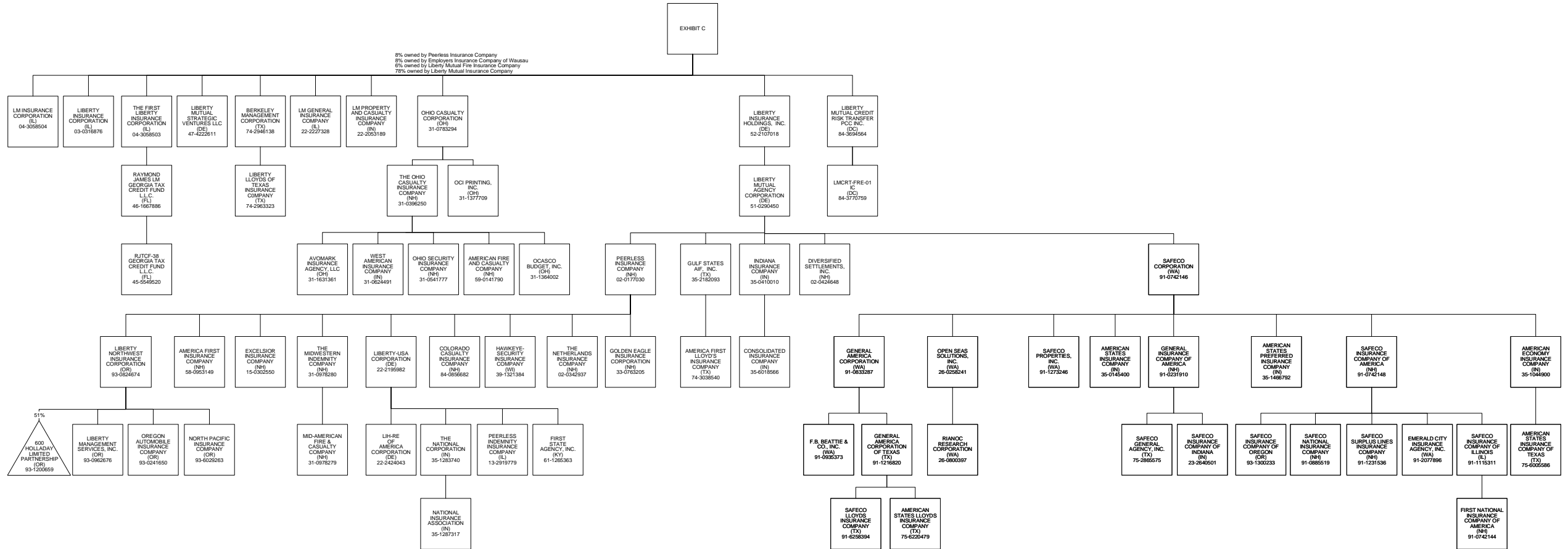
Statement as of June 30, 2023

SCHEDULE Y - PART 1 - ORGANIZATIONAL CHART

EXHIBIT B



Statement as of June 30, 2023
 SCHEDULE Y - PART 1 - ORGANIZATIONAL CHART



Statement as of June 30, 2023
 SCHEDULE Y - PART 1 - ORGANIZATIONAL CHART

