

**ANNUAL STATEMENT**

**OF THE**

---

---

**SAFECO INSURANCE COMPANY OF ILLINOIS**

---

**of** WARRENVILLE

**STATE OF** ILLINOIS

**TO THE**

**Insurance Department**

**OF THE**

**FOR THE YEAR ENDED**

**December 31, 2019**

**PROPERTY AND CASUALTY**

**2019**



39012201920100100

# ANNUAL STATEMENT

For the Year Ended December 31, 2019  
OF THE CONDITION AND AFFAIRS OF THE

## Safeco Insurance Company of Illinois

**NAIC Group Code** 0111 0111 **NAIC Company Code** 39012 **Employer's ID Number** 91-1115311  
(Current Period) (Prior Period)

**Organized under the Laws of** Illinois, **State of Domicile or Port of Entry** IL  
**Country of Domicile** United States of America

**Incorporated/Organized** August 29, 1980 **Commenced Business** January 1, 1981

**Statutory Home Office** 27201 Bella Vista Parkway, Suite 130, Warrenville, IL, US 60555  
(Street and Number) (City or Town, State, Country and Zip Code)

**Main Administrative Office** 175 Berkeley Street  
(Street and Number)  
Boston, MA, US 02116 617-357-9500 x41177  
(City or Town, State, Country and Zip Code) (Area Code) (Telephone Number)

**Mail Address** 175 Berkeley Street, Boston, MA, US 02116  
(Street and Number or P.O. Box) (City or Town, State, Country and Zip Code)

**Primary Location of Books and Records** 175 Berkeley Street Boston, MA, US 02116 617-357-9500  
(Street and Number) (City or Town, State, Country and Zip Code) (Area Code) (Telephone Number)

**Internet Web Site Address** www.safeco.com

**Statutory Statement Contact** Lindsey Pendergast 617-357-9500 x41177  
(Name) (Area Code) (Telephone Number) (Extension)  
Statutory.Compliance@LibertyMutual.com 857-224-1430  
(E-Mail Address) (Fax Number)

### OFFICERS

#### Chairman of the Board

Mark Charles Touhey

	Name	Title
1.	James Michael MacPhee	President and Chief Executive Officer
2.	Mark Charles Touhey	Senior Vice President and Secretary
3.	Laurance Henry Soyer Yahia	Senior Vice President and Treasurer

### VICE-PRESIDENTS

Name	Title	Name	Title
Alison Brooke Erbig	Senior Vice President and Comptroller	Neeti Bhalla Johnson	EVP and Chief Investment Officer
James Francis Kelleher	EVP and Chief Legal Officer	Christopher Locke Peirce	EVP and Chief Financial Officer

### DIRECTORS OR TRUSTEES

Matthew Paul Dolan	Alison Brooke Erbig	Michael Joseph Fallon	Stacie Ann Graham
Julie Marie Haase	Stephen Douglas Hylka	Christopher Bradley Johnston	James Michael MacPhee
Sean Bulman McSweeney	Elizabeth Julia Morahan	Francis William Robinson, Jr.	Mark Charles Touhey

State of Massachusetts  
County of Suffolk ss

The officers of this reporting entity being duly sworn, each depose and say that they are the described officers of said reporting entity, and that on the reporting period stated above, all of the herein described assets were the absolute property of the said reporting entity, free and clear from any liens or claims thereon, except as herein stated, and that this statement, together with related exhibits, schedules and explanations therein contained, annexed or referred to, is a full and true statement of all the assets and liabilities and of the condition and affairs of the said reporting entity as of the reporting period stated above, and of its income and deductions therefrom for the period ended, and have been completed in accordance with the NAIC Annual Statement Instructions and Accounting Practices and Procedures manual except to the extent that: (1) state law may differ; or, (2) that state rules or regulations require differences in reporting not related to accounting practices and procedures, according to the best of their information, knowledge and belief, respectively. Furthermore, the scope of this attestation by the described officers also includes the related corresponding electronic filing with the NAIC, when required, that is an exact copy (except for formatting differences due to electronic filing) of the enclosed statement. The electronic filing may be requested by various regulators in lieu of or in addition to the enclosed statement.

_____ (Signature) James Michael MacPhee _____ (Printed Name) 1. _____ President and Chief Executive Officer _____ (Title)	_____ (Signature) Mark Charles Touhey _____ (Printed Name) 2. _____ Senior Vice President and Secretary _____ (Title)	_____ (Signature) Laurance Henry Soyer Yahia _____ (Printed Name) 3. _____ Senior Vice President and Treasurer _____ (Title)
--	--	---

Subscribed and sworn to (or affirmed) before me this on this  
16th day of January, 2020, by

a. Is this an original filing?  Yes  No  
 b. If no: 1. State the amendment number \_\_\_\_\_  
 2. Date filed \_\_\_\_\_  
 3. Number of pages attached \_\_\_\_\_

## ASSETS

	Current Year			Prior Year
	1	2	3	4
	Assets	Nonadmitted Assets	Net Admitted Assets (Cols. 1 - 2)	Net Admitted Assets
1. Bonds (Schedule D)	115,368,185		115,368,185	132,642,330
2. Stocks (Schedule D):				
2.1 Preferred stocks				
2.2 Common stocks	58,870,102		58,870,102	58,492,544
3. Mortgage loans on real estate (Schedule B):				
3.1 First liens				
3.2 Other than first liens				
4. Real estate (Schedule A):				
4.1 Properties occupied by the company (less \$ 0 encumbrances)				
4.2 Properties held for the production of income (less \$ 0 encumbrances)				
4.3 Properties held for sale (less \$ 0 encumbrances)				
5. Cash (\$ 0, Schedule E - Part 1), cash equivalents (\$ 1,139,453, Schedule E - Part 2), and short-term investments (\$ 0, Schedule DA)	1,139,453		1,139,453	1,703,809
6. Contract loans (including \$ 0 premium notes)				
7. Derivatives (Schedule DB)				
8. Other invested assets (Schedule BA)	687		687	865
9. Receivables for securities				
10. Securities lending reinvested collateral assets (Schedule DL)	3,588,203		3,588,203	7,267,602
11. Aggregate write-ins for invested assets				
12. Subtotals, cash and invested assets (Lines 1 to 11)	178,966,630		178,966,630	200,107,150
13. Title plants less \$ 0 charged off (for Title insurers only)				
14. Investment income due and accrued	897,399		897,399	1,018,630
15. Premiums and considerations:				
15.1 Uncollected premiums and agents' balances in the course of collection				
15.2 Deferred premiums, agents' balances and installments booked but deferred and not yet due (including \$ 0 earned but unbilled premiums)				
15.3 Accrued retrospective premiums (\$ 0) and contracts subject to redetermination (\$ 0)				
16. Reinsurance:				
16.1 Amounts recoverable from reinsurers				
16.2 Funds held by or deposited with reinsured companies				
16.3 Other amounts receivable under reinsurance contracts				
17. Amounts receivable relating to uninsured plans				
18.1 Current federal and foreign income tax recoverable and interest thereon				
18.2 Net deferred tax asset				
19. Guaranty funds receivable or on deposit				
20. Electronic data processing equipment and software				
21. Furniture and equipment, including health care delivery assets (\$ 0)				
22. Net adjustment in assets and liabilities due to foreign exchange rates				
23. Receivables from parent, subsidiaries and affiliates	3		3	3
24. Health care (\$ 0) and other amounts receivable				
25. Aggregate write-ins for other-than-invested assets				
26. Total assets excluding Separate Accounts, Segregated Accounts and Protected Cell Accounts (Lines 12 to 25)	179,864,032		179,864,032	201,125,783
27. From Separate Accounts, Segregated Accounts and Protected Cell Accounts				
28. Total (Lines 26 and 27)	179,864,032		179,864,032	201,125,783

DETAILS OF WRITE-IN LINES				
1101.				
1102.				
1103.				
1198. Summary of remaining write-ins for Line 11 from overflow page				
1199. Totals (Lines 1101 through 1103 plus 1198) (Line 11 above)				
2501.				
2502.				
2503.				
2598. Summary of remaining write-ins for Line 25 from overflow page				
2599. Totals (Lines 2501 through 2503 plus 2598) (Line 25 above)				

## LIABILITIES, SURPLUS AND OTHER FUNDS

	1 Current Year	2 Prior Year
1. Losses (Part 2A, Line 35, Column 8)		
2. Reinsurance payable on paid losses and loss adjustment expenses (Schedule F, Part 1, Column 6)		
3. Loss adjustment expenses (Part 2A, Line 35, Column 9)		
4. Commissions payable, contingent commissions and other similar charges		
5. Other expenses (excluding taxes, licenses and fees)		
6. Taxes, licenses and fees (excluding federal and foreign income taxes)		
7.1 Current federal and foreign income taxes (including \$ 0 on realized capital gains (losses))	59,737	142,432
7.2 Net deferred tax liability	464,000	479,000
8. Borrowed money \$ 0 and interest thereon \$ 0		
9. Unearned premiums (Part 1A, Line 38, Column 5) (after deducting unearned premiums for ceded reinsurance of \$ 1,080,525,623 and including warranty reserves of \$ 0 and accrued accident and health experience rating refunds including \$ 0 for medical loss ratio rebate per the Public Health Service Act)		
10. Advance premium		
11. Dividends declared and unpaid:		
11.1 Stockholders		
11.2 Policyholders		
12. Ceded reinsurance premiums payable (net of ceding commissions)		
13. Funds held by company under reinsurance treaties (Schedule F, Part 3, Column 20)		
14. Amounts withheld or retained by company for account of others		
15. Remittances and items not allocated		
16. Provision for reinsurance (including \$ 0 certified) (Schedule F, Part 3 Column 78)		
17. Net adjustments in assets and liabilities due to foreign exchange rates		
18. Drafts outstanding		
19. Payable to parent, subsidiaries and affiliates	224,482	814,764
20. Derivatives		
21. Payable for securities		1,502,421
22. Payable for securities lending	3,588,203	7,267,602
23. Liability for amounts held under uninsured plans		
24. Capital notes \$ 0 and interest thereon \$ 0		
25. Aggregate write-ins for liabilities		
26. Total liabilities excluding protected cell liabilities (Lines 1 through 25)	4,336,422	10,206,219
27. Protected cell liabilities		
28. Total liabilities (Lines 26 and 27)	4,336,422	10,206,219
29. Aggregate write-ins for special surplus funds		
30. Common capital stock	2,500,000	2,500,000
31. Preferred capital stock		
32. Aggregate write-ins for other-than-special surplus funds		
33. Surplus notes		
34. Gross paid in and contributed surplus	85,428,035	85,428,035
35. Unassigned funds (surplus)	87,599,575	102,991,529
36. Less treasury stock, at cost:		
36.1 0 shares common (value included in Line 30 \$ 0)		
36.2 0 shares preferred (value included in Line 31 \$ 0)		
37. Surplus as regards policyholders (Lines 29 to 35, less 36) (Page 4, Line 39)	175,527,610	190,919,564
38. Totals (Page 2, Line 28, Col. 3)	179,864,032	201,125,783

DETAILS OF WRITE-IN LINES		
2501. ....		
2502. ....		
2503. ....		
2598. Summary of remaining write-ins for Line 25 from overflow page		
2599. Totals (Lines 2501 through 2503 plus 2598) (Line 25 above)		
2901. ....		
2902. ....		
2903. ....		
2998. Summary of remaining write-ins for Line 29 from overflow page		
2999. Totals (Lines 2901 through 2903 plus 2998) (Line 29 above)		
3201. ....		
3202. ....		
3203. ....		
3298. Summary of remaining write-ins for Line 32 from overflow page		
3299. Totals (Lines 3201 through 3203 plus 3298) (Line 32 above)		

## STATEMENT OF INCOME

	1	2
	Current Year	Prior Year
<b>UNDERWRITING INCOME</b>		
1. Premiums earned (Part 1, Line 35, Column 4)		
DEDUCTIONS:		
2. Losses incurred (Part 2, Line 35, Column 7)		
3. Loss adjustment expenses incurred (Part 3, Line 25, Column 1)		
4. Other underwriting expenses incurred (Part 3, Line 25, Column 2)		
5. Aggregate write-ins for underwriting deductions		
6. Total underwriting deductions (Lines 2 through 5)		
7. Net income of protected cells		
8. Net underwriting gain (loss) (Line 1 minus Line 6 plus Line 7)		
<b>INVESTMENT INCOME</b>		
9. Net investment income earned (Exhibit of Net Investment Income, Line 17)	4,569,565	3,352,912
10. Net realized capital gains (losses) less capital gains tax of \$ 94,583 (Exhibit of Capital Gains (Losses))	355,811	60,380
11. Net investment gain (loss) (Lines 9 + 10)	4,925,376	3,413,292
<b>OTHER INCOME</b>		
12. Net gain or (loss) from agents' or premium balances charged off (amount recovered \$ 0 amount charged off \$ 0)		
13. Finance and service charges not included in premiums		
14. Aggregate write-ins for miscellaneous income	759	48
15. Total other income (Lines 12 through 14)	759	48
16. Net income before dividends to policyholders, after capital gains tax and before all other federal and foreign income taxes (Lines 8 + 11 + 15)	4,926,135	3,413,340
17. Dividends to policyholders		
18. Net income, after dividends to policyholders, after capital gains tax and before all other federal and foreign income taxes (Line 16 minus Line 17)	4,926,135	3,413,340
19. Federal and foreign income taxes incurred	632,417	1,412,950
20. Net income (Line 18 minus Line 19) (to Line 22)	4,293,718	2,000,390
<b>CAPITAL AND SURPLUS ACCOUNT</b>		
21. Surplus as regards policyholders, December 31 prior year (Page 4, Line 39, Column 2)	190,919,562	187,408,993
22. Net income (from Line 20)	4,293,718	2,000,390
23. Net transfers (to) from Protected Cell accounts		
24. Change in net unrealized capital gains or (losses) less capital gains tax of \$ 2,920	388,364	1,030,099
25. Change in net unrealized foreign exchange capital gain (loss)		
26. Change in net deferred income tax	17,920	480,080
27. Change in nonadmitted assets (Exhibit of Nonadmitted Assets, Line 28, Col. 3)		
28. Change in provision for reinsurance (Page 3, Line 16, Column 2 minus Column 1)		
29. Change in surplus notes		
30. Surplus (contributed to) withdrawn from protected cells		
31. Cumulative effect of changes in accounting principles		
32. Capital changes:		
32.1 Paid in		
32.2 Transferred from surplus (Stock Dividend)		
32.3 Transferred to surplus		
33. Surplus adjustments:		
33.1 Paid in		
33.2 Transferred to capital (Stock Dividend)		
33.3 Transferred from capital		
34. Net remittances from or (to) Home Office		
35. Dividends to stockholders	(20,091,956)	
36. Change in treasury stock (Page 3, Lines 36.1 and 36.2, Column 2 minus Column 1)		
37. Aggregate write-ins for gains and losses in surplus		
38. Change in surplus as regards policyholders for the year (Lines 22 through 37)	(15,391,954)	3,510,569
39. Surplus as regards policyholders, December 31 current year (Lines 21 plus Line 38) (Page 3, Line 37)	175,527,608	190,919,562

<b>DETAILS OF WRITE-IN LINES</b>		
0501.		
0502.		
0503.		
0598. Summary of remaining write-ins for Line 05 from overflow page		
0599. Totals (Lines 0501 through 0503 plus 0598) (Line 05 above)		
1401. Other income/(expense)	759	48
1402.		
1403.		
1498. Summary of remaining write-ins for Line 14 from overflow page		
1499. Totals (Lines 1401 through 1403 plus 1498) (Line 14 above)	759	48
3701.		
3702.		
3703.		
3798. Summary of remaining write-ins for Line 37 from overflow page		
3799. Totals (Lines 3701 through 3703 plus 3798) (Line 37 above)		

**CASH FLOW**

	1	2
<b>Cash from Operations</b>	Current Year	Prior Year
1. Premiums collected net of reinsurance	1,058,851	(1,456,837)
2. Net investment income	4,897,357	4,006,314
3. Miscellaneous income		48
4. Total (Lines 1 through 3)	5,956,208	2,549,525
5. Benefit and loss related payments		
6. Net transfers to Separate Accounts, Segregated Accounts and Protected Cell Accounts		
7. Commissions, expenses paid and aggregate write-ins for deductions		
8. Dividends paid to policyholders		
9. Federal and foreign income taxes paid (recovered) net of \$ 0 tax on capital gains (losses)	809,695	1,782,100
10. Total (Lines 5 through 9)	809,695	1,782,100
11. Net cash from operations (Line 4 minus Line 10)	5,146,513	767,425
<b>Cash from Investments</b>		
12. Proceeds from investments sold, matured or repaid:		
12.1 Bonds	51,435,136	30,408,174
12.2 Stocks		
12.3 Mortgage loans		
12.4 Real estate		
12.5 Other invested assets	19,187,561	23,814,497
12.6 Net gains or (losses) on cash, cash equivalents and short-term investments		
12.7 Miscellaneous proceeds		1,035,483
12.8 Total investment proceeds (Lines 12.1 to 12.7)	70,622,697	55,258,154
13. Cost of investments acquired (long-term only):		
13.1 Bonds	52,004,587	33,935,959
13.2 Stocks		
13.3 Mortgage loans		
13.4 Real estate		
13.5 Other invested assets	15,508,162	26,168,161
13.6 Miscellaneous applications	1,502,421	(718,536)
13.7 Total investments acquired (Lines 13.1 to 13.6)	69,015,170	59,385,584
14. Net increase (decrease) in contract loans and premium notes		
15. Net cash from investments (Line 12.8 minus Line 13.7 minus Line 14)	1,607,527	(4,127,430)
<b>Cash from Financing and Miscellaneous Sources</b>		
16. Cash provided (applied):		
16.1 Surplus notes, capital notes		
16.2 Capital and paid in surplus, less treasury stock		
16.3 Borrowed funds		
16.4 Net deposits on deposit-type contracts and other insurance liabilities		
16.5 Dividends to stockholders	20,091,956	
16.6 Other cash provided (applied)	12,773,560	4,604,605
17. Net cash from financing and miscellaneous sources (Lines 16.1 to 16.4 minus Line 16.5 plus Line 16.6)	(7,318,396)	4,604,605
<b>RECONCILIATION OF CASH, CASH EQUIVALENTS AND SHORT-TERM INVESTMENTS</b>		
18. Net change in cash, cash equivalents and short-term investments (Line 11, plus Lines 15 and 17)	(564,356)	1,244,600
19. Cash, cash equivalents and short-term investments:		
19.1 Beginning of year	1,703,809	459,209
19.2 End of year (Line 18 plus Line 19.1)	1,139,453	1,703,809

Note: Supplemental disclosures of cash flow information for non-cash transactions:

20.0001	2 - Net investment income	12,223	17,668
20.0002	12.1 - Proceeds from investments sold, matured or repaid - Bonds	18,895,798	
20.0003	13.1 - Cost of Investments Acquired - Bonds	782,239	17,668
20.0004	16.6 Cash provided (applied) - Other cash provided (applied)	(18,101,336)	

**NONE Underwriting and Investment Exhibit - Part 1**

**NONE Underwriting and Investment Exhibit - Part 1A**

## UNDERWRITING AND INVESTMENT EXHIBIT

### PART 1B – PREMIUMS WRITTEN

Line of Business	1	Reinsurance Assumed		Reinsurance Ceded		6
	Direct Business (a)	2  From Affiliates	3  From Non- Affiliates	4  To Affiliates	5  To Non- Affiliates	Net Premiums Written Cols. 1 + 2 + 3 - 4 - 5
1. Fire	422,138			422,138		
2. Allied lines	454,908			454,908		
3. Farmowners multiple peril						
4. Homeowners multiple peril	294,780,365			294,780,365		
5. Commercial multiple peril						
6. Mortgage guaranty						
8. Ocean marine						
9. Inland marine	5,979,368			5,979,368		
10. Financial guaranty						
11.1 Medical professional liability--occurrence						
11.2 Medical professional liability--claims-made						
12. Earthquake	9,085,003			9,085,003		
13. Group accident and health						
14. Credit accident and health (group and individual)						
15. Other accident and health						
16. Workers' compensation	350,215			350,215		
17.1 Other liability—occurrence	4,770,689			4,770,689		
17.2 Other liability—claims-made						
17.3 Excess workers' compensation						
18.1 Products liability—occurrence						
18.2 Products liability—claims-made						
19.1,19.2 Private passenger auto liability	1,101,660,172			1,101,660,172		
19.3,19.4 Commercial auto liability						
21. Auto physical damage	790,342,220			790,342,220		
22. Aircraft (all perils)						
23. Fidelity						
24. Surety						
26. Burglary and theft						
27. Boiler and machinery						
28. Credit						
29. International						
30. Warranty						
31. Reinsurance-nonproportional assumed property	X X X					
32. Reinsurance-nonproportional assumed liability	X X X					
33. Reinsurance-nonproportional assumed financial lines	X X X					
34. Aggregate write-ins for other lines of business						
35. TOTALS	2,207,845,078			2,207,845,078		

DETAILS OF WRITE-IN LINES						
3401.						
3402.						
3403.						
3498. Sum of remaining write-ins for Line 34 from overflow page						
3499. Totals (Lines 3401 through 3403 plus 3498) (Line 34 above)						

NONE

(a) Does the company's direct premiums written include premiums recorded on an installment basis? Yes [ ] No [X]

If yes: 1. The amount of such installment premiums \$ 0

2. Amount at which such installment premiums would have been reported had they been recorded on an annualized basis \$ 0



## UNDERWRITING AND INVESTMENT EXHIBIT PART 2 – LOSSES PAID AND INCURRED

Line of Business	Losses Paid Less Salvage				5 Net Losses Unpaid Current Year (Part 2A, Col. 8)	6 Net Losses Unpaid Prior Year	7 Losses Incurred Current Year (Cols. 4 + 5 - 6)	8 Percentage of Losses Incurred (Col. 7, Part 2) to Premiums Earned (Col. 4, Part 1)
	1 Direct Business	2 Reinsurance Assumed	3 Reinsurance Recovered	4 Net Payments (Cols. 1 + 2 - 3)				
1. Fire	579,400		579,400					
2. Allied lines	1,765,373		1,765,373					
3. Farmowners multiple peril								
4. Homeowners multiple peril	183,032,800		183,032,800					
5. Commercial multiple peril	(10,137)		(10,137)					
6. Mortgage guaranty								
8. Ocean marine								
9. Inland marine	1,894,075		1,894,075					
10. Financial guaranty								
11.1 Medical professional liability—occurrence								
11.2 Medical professional liability—claims-made								
12. Earthquake	6,900		6,900					
13. Group accident and health								
14. Credit accident and health (group and individual)								
15. Other accident and health								
16. Workers' compensation	543,075		543,075					
17.1 Other liability—occurrence	1,236,494		1,236,494					
17.2 Other liability—claims-made								
17.3 Excess workers' compensation								
18.1 Products liability—occurrence								
18.2 Products liability—claims-made								
19.1,19.2 Private passenger auto liability	691,399,506		691,399,506					
19.3,19.4 Commercial auto liability								
21. Auto physical damage	461,345,327		461,345,327					
22. Aircraft (all perils)								
23. Fidelity								
24. Surety								
26. Burglary and theft								
27. Boiler and machinery								
28. Credit								
29. International								
30. Warranty								
31. Reinsurance-nonproportional assumed property	X X X							
32. Reinsurance-nonproportional assumed liability	X X X							
33. Reinsurance-nonproportional assumed financial lines	X X X							
34. Aggregate write-ins for other lines of business								
35. TOTALS	1,341,792,813		1,341,792,813					

DETAILS OF WRITE-IN LINES							
3401.							
3402.							
3403.							
3498. Sum of remaining write-ins for Line 34 from overflow page							
3499. Totals (Lines 3401 through 3403 plus 3498) (Line 34 above)							

NONE

## UNDERWRITING AND INVESTMENT EXHIBIT

### PART 2A – UNPAID LOSSES AND LOSS ADJUSTMENT EXPENSES

Line of Business	Reported Losses				Incurred But Not Reported			8 Net Losses Unpaid (Cols. 4 + 5 + 6 - 7)	9 Net Unpaid Loss Adjustment Expenses
	1 Direct	2 Reinsurance Assumed	3 Deduct Reinsurance Recoverable	4 Net Losses Excl. Incurred But Not Reported (Cols. 1 + 2 - 3)	5 Direct	6 Reinsurance Assumed	7 Reinsurance Ceded		
1. Fire	124,067		124,067		23,455		23,455		
2. Allied lines	61,183		61,183		327,002		327,002		
3. Farmowners multiple peril									
4. Homeowners multiple peril	63,546,231		63,546,231		39,976,135		39,976,135		
5. Commercial multiple peril	12,745		12,745		20,442		20,442		
6. Mortgage guaranty									
8. Ocean marine									
9. Inland marine	9,205		9,205		99,368		99,368		
10. Financial guaranty									
11.1 Medical professional liability—occurrence									
11.2 Medical professional liability—claims-made									
12. Earthquake					345,906		345,906	(a)	
13. Group accident and health									
14. Credit accident and health (group and individual)									
15. Other accident and health									(a)
16. Workers' compensation	11,768,970		11,768,970		2,018,155		2,018,155		
17.1 Other liability—occurrence	1,577,858		1,577,858		1,322,254		1,322,254		
17.2 Other liability—claims-made									
17.3 Excess workers' compensation									
18.1 Products liability—occurrence									
18.2 Products liability—claims-made									
19.1,19.2 Private passenger auto liability	693,572,705		693,572,705		362,933,019		362,933,019		
19.3,19.4 Commercial auto liability									
21. Auto physical damage	200,126		200,126		30,439,964		30,439,964		
22. Aircraft (all perils)									
23. Fidelity									
24. Surety									
26. Burglary and theft									
27. Boiler and machinery									
28. Credit									
29. International									
30. Warranty									
31. Reinsurance-nonproportional assumed property	X X X				X X X				
32. Reinsurance-nonproportional assumed liability	X X X				X X X				
33. Reinsurance-nonproportional assumed financial lines	X X X				X X X				
34. Aggregate write-ins for other lines of business									
35. TOTALS	770,873,090		770,873,090		437,505,700		437,505,700		
<b>DETAILS OF WRITE-IN LINES</b>									
3401.									
3402.									
3403.									
3498. Sum of remaining write-ins for Line 34 from overflow page									
3499. Totals (Lines 3401 through 3403 plus 3498) (Line 34 above)									

(a) Including \$ 0 for present value of life indemnity claims.

## UNDERWRITING AND INVESTMENT EXHIBIT

### PART 3 - EXPENSES

	1	2	3	4
	Loss Adjustment Expenses	Other Underwriting Expenses	Investment Expenses	Total
1. Claim adjustment services:				
1.1 Direct	62,086,832			62,086,832
1.2 Reinsurance assumed				
1.3 Reinsurance ceded	62,086,832			62,086,832
1.4 Net claim adjustment services (1.1 + 1.2 - 1.3)				
2. Commission and brokerage:				
2.1 Direct, excluding contingent		275,971,240		275,971,240
2.2 Reinsurance assumed, excluding contingent				
2.3 Reinsurance ceded, excluding contingent		275,971,240		275,971,240
2.4 Contingent—direct				
2.5 Contingent—reinsurance assumed				
2.6 Contingent—reinsurance ceded				
2.7 Policy and membership fees				
2.8 Net commission and brokerage (2.1 + 2.2 - 2.3 + 2.4 + 2.5 - 2.6 + 2.7)				
3. Allowances to manager and agents				
4. Advertising			482	482
5. Boards, bureaus and associations			270	270
6. Surveys and underwriting reports			310	310
7. Audit of assureds' records				
8. Salary and related items:				
8.1 Salaries			77,119	77,119
8.2 Payroll taxes			18,570	18,570
9. Employee relations and welfare			46,130	46,130
10. Insurance			1,701	1,701
11. Directors' fees			15	15
12. Travel and travel items			3,641	3,641
13. Rent and rent items			42,824	42,824
14. Equipment			18,819	18,819
15. Cost or depreciation of EDP equipment and software			13,188	13,188
16. Printing and stationery			579	579
17. Postage, telephone and telegraph, exchange and express			2,560	2,560
18. Legal and auditing			2,538	2,538
19. Totals (Lines 3 to 18)			228,746	228,746
20. Taxes, licenses and fees:				
20.1 State and local insurance taxes deducting guaranty association credits of \$ 0				
20.2 Insurance department licenses and fees				
20.3 Gross guaranty association assessments				
20.4 All other (excluding federal and foreign income and real estate)				
20.5 Total taxes, licenses and fees (20.1 + 20.2 + 20.3 + 20.4)				
21. Real estate expenses				
22. Real estate taxes				
23. Reimbursements by uninsured plans				
24. Aggregate write-ins for miscellaneous expenses			28,837	28,837
25. Total expenses incurred			257,583	(a) 257,583
26. Less unpaid expenses—current year				
27. Add unpaid expenses—prior year				
28. Amounts receivable relating to uninsured plans, prior year				
29. Amounts receivable relating to uninsured plans, current year				
30. TOTAL EXPENSES PAID (Lines 25 - 26 + 27 - 28 + 29)			257,583	257,583

DETAILS OF WRITE-IN LINES				
2401. Other expenses			28,837	28,837
2402.				
2403.				
2498. Sum of remaining write-ins for Line 24 from overflow page				
2499. Totals (Lines 2401 through 2403 plus 2498) (Line 24 above)			28,837	28,837

(a) Includes management fees of \$ 257,584 to affiliates and \$ 0 to non-affiliates.

## EXHIBIT OF NET INVESTMENT INCOME

	1 Collected During Year	2 Earned During Year
1. U.S. Government bonds	(a) 1,446,370	1,497,873
1.1 Bonds exempt from U.S. tax	(a) 536,676	485,287
1.2 Other bonds (unaffiliated)	(a) 1,888,270	1,766,925
1.3 Bonds of affiliates	(a)	
2.1 Preferred stocks (unaffiliated)	(b)	
2.11 Preferred stocks of affiliates	(b)	
2.2 Common stocks (unaffiliated)		
2.21 Common stocks of affiliates	1,000,000	1,000,000
3. Mortgage loans	(c)	
4. Real estate	(d)	
5. Contract loans		
6. Cash, cash equivalents and short-term investments	(e) 32,392	32,392
7. Derivative instruments	(f)	
8. Other invested assets		
9. Aggregate write-ins for investment income	44,672	44,672
10. Total gross investment income	4,948,380	4,827,149
11. Investment expenses		(g) 257,584
12. Investment taxes, licenses and fees, excluding federal income taxes		(g)
13. Interest expense		(h)
14. Depreciation on real estate and other invested assets		(i)
15. Aggregate write-ins for deductions from investment income		
16. Total deductions (Lines 11 through 15)		257,584
17. Net investment income (Line 10 minus Line 16)		4,569,565

DETAILS OF WRITE-IN LINES		
0901. Miscellaneous Income/(Expense)	44,672	44,672
0902. Investment Income/(Expense) – Pooling Restatement		
0903.		
0998. Summary of remaining write-ins for Line 09 from overflow page		
0999. Totals (Lines 0901 through 0903 plus 0998) (Line 09 above)	44,672	44,672
1501.	<b>NONE</b>	
1502.		
1503.		
1598. Summary of remaining write-ins for Line 15 from overflow page		
1599. Totals (Lines 1501 through 1503 plus 1598) (Line 15 above)		

- (a) Includes \$ 98,438 accrual of discount less \$ 318,408 amortization of premium and less \$ 91,378 paid for accrued interest on purchases.
- (b) Includes \$ 0 accrual of discount less \$ 0 amortization of premium and less \$ 0 paid for accrued dividends on purchases.
- (c) Includes \$ 0 accrual of discount less \$ 0 amortization of premium and less \$ 0 paid for accrued interest on purchases.
- (d) Includes \$ 0 for company's occupancy of its own buildings; and excludes \$ 0 interest on encumbrances.
- (e) Includes \$ 0 accrual of discount less \$ 0 amortization of premium and less \$ 0 paid for accrued interest on purchases.
- (f) Includes \$ 0 accrual of discount less \$ 0 amortization of premium.
- (g) Includes \$ 257,584 investment expenses and \$ 0 investment taxes, licenses and fees, excluding federal income taxes, attributable to segregated and Separate Accounts.
- (h) Includes \$ 0 interest on surplus notes and \$ 0 interest on capital notes.
- (i) Includes \$ 0 depreciation on real estate and \$ 0 depreciation on other invested assets.

## EXHIBIT OF CAPITAL GAINS (LOSSES)

	1 Realized Gain (Loss) on Sales or Maturity	2 Other Realized Adjustments	3 Total Realized Capital Gain (Loss) (Columns 1 + 2)	4 Change in Unrealized Capital Gain (Loss)	5 Change in Unrealized Foreign Exchange Capital Gain (Loss)
1. U.S. Government bonds	(165,702)		(165,702)		
1.1 Bonds exempt from U.S. tax	246,415		246,415		
1.2 Other bonds (unaffiliated)	369,681		369,681	13,903	
1.3 Bonds of affiliates					
2.1 Preferred stocks (unaffiliated)					
2.11 Preferred stocks of affiliates					
2.2 Common stocks (unaffiliated)					
2.21 Common stocks of affiliates				377,558	
3. Mortgage loans					
4. Real estate					
5. Contract loans					
6. Cash, cash equivalents and short-term investments					
7. Derivative instruments					
8. Other invested assets				(178)	
9. Aggregate write-ins for capital gains (losses)					
10. Total capital gains (losses)	450,394		450,394	391,283	

DETAILS OF WRITE-IN LINES					
0901.	<b>NONE</b>				
0902.					
0903.					
0998. Summary of remaining write-ins for Line 09 from overflow page					
0999. Totals (Lines 0901 through 0903 plus 0998) (Line 09 above)					

**NONE Exhibit of Nonadmitted Assets**

## NOTES TO FINANCIAL STATEMENTS

### Note 1 – Summary of Significant Accounting Policies and Going Concern

#### A. Accounting Practices

Effective January 1, 2001, and subject to any deviations prescribed or permitted by the State of Illinois, the accompanying financial statements of Safeco Insurance Company of Illinois (the “Company”) have been prepared in conformity with the National Association of Insurance Commissioners (“NAIC”) Accounting Practices and Procedures Manual (“APP Manual”).

The Company does not have any prescribed or permitted accounting practices.

#### NET INCOME

	SSAP #	F/S Page	F/S Line #	2019	2018
1. Safeco Insurance Company of Illinois state basis (Page 4, Line 20, Columns 1 & 3)	XXX	XXX	XXX	\$4,292,960	\$2,000,391
2. State Prescribed Practices that increase/(decrease) NAIC SAP: NONE	.....	.....	.....	.....	.....
3. State Permitted Practices that increase/(decrease) NAIC SAP: NONE	.....	.....	.....	.....	.....
4. NAIC SAP (1-2-3=4)	XXX	XXX	XXX	<u>\$4,292,960</u>	<u>\$2,000,391</u>

#### SURPLUS

5. Safeco Insurance Company of Illinois state basis (Page 3, Line 37, Columns 1 & 2)	XXX	XXX	XXX	\$175,527,610	\$190,919,564
6. State Prescribed Practices that increase/(decrease) NAIC SAP: NONE	.....	.....	.....	.....	.....
7. State Permitted Practices that increase/(decrease) NAIC SAP: NONE	.....	.....	.....	.....	.....
8. NAIC SAP (5-6-7=8)	XXX	XXX	XXX	<u>\$175,527,610</u>	<u>\$190,919,564</u>
B. Use of Estimates in the Preparation of the Financial Statements					

The preparation of financial statements requires management to make estimates and assumptions that affect the reported amounts of assets, liabilities, revenues, and expenses. It also requires estimates in the disclosure of contingent assets and liabilities. Actual results could differ from these estimates.

#### C. Accounting Policies

Premiums are earned over the terms of the related policies and reinsurance contracts. Unearned premium reserves are established to cover the unexpired portion of premiums written. Such reserves are computed by pro-rata methods. Expenses incurred in connection with acquiring new insurance business, including acquisition costs such as sales commissions, are charged to operations as incurred. Expenses incurred are reduced for ceding allowances received or receivable.

In addition, the Company applies the following accounting policies, where applicable:

- Short term investments are carried at cost, adjusted where appropriate for amortization of premium or discount, or fair value as specified by the Purposes and Procedures Manual of the NAIC Investment Analysis Office (SVO Manual).
- Bonds are carried at cost, adjusted where appropriate for amortization of premium or discount, or fair value as specified by the SVO Manual.
- Common stocks are carried at fair value, except that investments in stocks of subsidiaries, controlled and affiliated (“SCA”) companies are carried according to Note 1C(7).
- Preferred stocks are carried at cost or fair value as specified by the SVO Manual. Preferred stocks of SCA companies are carried according to Note 1C(7).
- Mortgage loans are carried at unpaid principal balances, less impairments as specified by the SVO Manual.
- Mortgage backed/asset backed securities are carried at amortized cost or fair value based on guidance in the SVO Manual. Prepayment assumptions for mortgage backed/asset backed securities are based on market expectations. The retrospective adjustment method is used to value all mortgage backed/asset backed securities.

## NOTES TO FINANCIAL STATEMENTS

7. Investments in SCA companies are carried in accordance with SSAP No. 97, *Investments in Subsidiary, Controlled, and Affiliated Entities, A Replacement of SSAP No. 88*, and the SVO Manual.
  8. Investments in joint ventures, partnerships, and limited liability companies are carried in accordance with SSAP No. 48, *Joint Ventures, Partnerships and Limited Liability Companies*, and the SVO Manual.
  9. Derivative Securities, refer to Note 8.
  10. Investment income is anticipated as a factor in the premium deficiency calculation, in accordance with SSAP No. 53, *Property Casualty Contracts - Premiums*. Refer to Note 30.
  11. Unpaid losses and loss adjustment expenses include an amount determined from individual case estimates and an amount, based on past experience, for losses and loss adjustment expenses incurred but not reported. Such liabilities are necessarily based on assumptions and estimates, and while management believes the amount is adequate, the ultimate liability may be in excess of or less than the amount provided. The methods, for making such estimates and for establishing the resulting liability, are continually reviewed and follow current standards of practice. Any adjustments to the liability are reflected in the period that they are determined.
  12. The Company did not change its capitalization policy in 2019
  13. The Company has no pharmaceutical rebate receivables.
- D. Going Concern

The Company is not aware of any conditions that would impact its ability to continue as a going concern.

### **Note 2 – Accounting Changes and Corrections of Errors**

There were no material changes in accounting principles and/or correction of errors.

### **Note 3 - Business Combinations and Goodwill**

- A. Statutory Purchase Method  
The Company did not enter into any statutory purchases during the year.
- B. Statutory Mergers  
The Company did not enter into any statutory mergers during the year.
- C. Impairment Loss  
The Company did not recognize an impairment loss during the period.

### **Note 4 – Discontinued Operations**

The Company has no discontinued operations.

### **Note 5 - Investments**

- A. Mortgage Loans, including Mezzanine Real Estate Loans  
  
The Company does not invest in mortgage loans.
- B. Debt Restructuring  
  
Not applicable.
- C. Reverse Mortgages  
  
The Company has no reverse mortgages.
- D. Loaned Backed Securities
1. Prepayment speed assumptions are updated monthly with data sourced from the Bloomberg data service.
  2. All Loaned Backed Securities with a recognized other-than-temporary impairment disclosed in the aggregate as of December 31, 2019: None

## NOTES TO FINANCIAL STATEMENTS

3. Each Loaned Backed Security with a recognized other-than-temporary impairment held by the company at December 31, 2019: None
4. All impaired Loaned Backed Securities for which an other-than-temporary impairment has not been recognized in earnings as a realized loss as of December 31, 2019:
- a. The aggregate amount of unrealized losses:
- |                        |            |
|------------------------|------------|
| 1. Less than 12 Months | (\$11,197) |
| 2. 12 Months or Longer | (\$12,230) |
- b. The aggregate related fair value of securities with unrealized losses:
- |                        |             |
|------------------------|-------------|
| 1. Less than 12 Months | \$1,809,915 |
| 2. 12 Months or Longer | \$1,710,554 |
5. The Company reviews fixed income securities for impairment on a quarterly basis. Securities are reviewed for both quantitative and qualitative considerations including, but not limited to: (a) the extent of the decline in fair value below book value, (b) the duration of the decline, (c) significant adverse changes in the financial condition or near term prospects of the investment or issuer, (d) significant change in the business climate or credit ratings of the issuer, (e) general market conditions and volatility, (f) industry factors, and (g) the past impairment of the security holding or the issuer. If the Company believes a decline in the value of a particular investment is temporary, the decline is recorded as an unrealized loss in policyholders' equity. If the decline is believed to be "other-than-temporary," and the Company believes it will not be able to collect all cash flows due on its fixed income securities, then the carrying value of the investment is written down to the expected cash flow amount and a realized loss is recorded as a credit impairment.
- E. Dollar Repurchase Agreements and/or Securities Lending Transactions
1. The Company has not entered into any repurchase agreements during the year. Refer to Note 17B for the policy on requiring collateral to security lending.
2. The Company has not pledged any of its assets as collateral as of December 31, 2019.
3. Collateral Received
- a. Aggregate Amount Collateral Received
- |   | <u>Fair Value</u> |
|---|-------------------|
| 1. Securities Lending   |                   |
| (a) Open  | \$3,588,203       |
| (b) 30 Days or Less   | -                 |
| (c) 31 to 60 Days   | -                 |
| (d) 61 to 90 Days   | -                 |
| (e) Greater Than 90 Days  | -                 |
| (f) Sub-Total   | \$3,588,203       |
| (g) Securities Received   | 6,339,872         |
| (h) Total Collateral Received   | \$9,928,075       |
| 2. Dollar Repurchase Agreement  | -                 |
| (a) Open  | -                 |
| (b) 30 Days or Less   | -                 |
| (c) 31 to 60 Days   | -                 |
| (d) 61 to 90 Days   | -                 |
| (e) Greater Than 90 Days  | -                 |
| (f) Sub-Total   | -                 |
| (g) Securities Received   | -                 |
| (h) Total Collateral Received   | -                 |
| b. The fair value of that collateral and of the portion of that collateral that it has sold or re-pledged | \$ 9,928,075      |
- c. All collateral is received in the form of cash and/or securities equal to or in excess of 102% of the loaned value and are maintained in a separate custody account. Cash collateral is reinvested into short-term investments as outlined in the terms of the investment agreement. Per the terms of the investment agreement the Company has the right and ability to redeem any eligible securities on short notice.



## NOTES TO FINANCIAL STATEMENTS

### 4. Securities Lending Transactions Administered by an Affiliated Agent

The Company's security lending transactions are not administered by an affiliate agent.

### 5. Collateral Reinvestment

#### a. Aggregate Amount Collateral Received

	Amortized Cost	Fair Value
1. Securities Lending		
(a) Open	\$0	\$0
(b) 30 Days or Less	1,336,805	1,336,805
(c) 31 to 60 Days	1,078,910	1,078,910
(d) 61 to 90 Days	1,172,488	1,172,488
(e) 91 to 120 Days	-	-
(f) 121 to 180 Days	-	-
(g) 181 to 365 Days	-	-
(h) 1 to 2 Years	-	-
(i) 2 to 3 Years	-	-
(j) Greater Than 3 Years	-	-
(k) Sub-Total	\$3,588,203	\$3,588,203
(l) Securities Received	-	-
(m) Total Collateral Reinvested	\$3,588,203	\$3,588,203
2. Dollar Repurchase Agreement		
(a) Open	-	-
(b) 30 Days or Less	-	-
(c) 31 to 60 Days	-	-
(d) 61 to 90 Days	-	-
(e) 91 to 120 Days	-	-
(f) 121 to 180 Days	-	-
(g) 181 to 365 Days	-	-
(h) 1 to 2 Years	-	-
(i) 2 to 3 Years	-	-
(j) Greater Than 3 Years	-	-
(k) Sub-Total	-	-
(l) Securities Received	-	-
(m) Total Collateral Reinvested	-	-

- b. The reporting entity's sources of cash that it uses to return the cash collateral is dependent on the liquidity of the current market conditions. Under current conditions, the reporting entity could liquidate all or a portion of its cash collateral reinvestment securities in order to meet the collateral calls that could come due under a worst-case scenario.

6. The Company has not accepted collateral that it is not permitted by contract or custom to sell or re-pledge.

7. The Company has not accepted collateral that extends beyond one year from the reporting date for securities lending transactions.

#### F. Repurchase Agreements Transactions Accounted for as Secured Borrowing

Not applicable.

#### G. Reverse Repurchase Agreements Transactions Accounted for as Secured Borrowing

Not applicable.

#### H. Repurchase Agreements Transactions Accounted for as a Sales

Not applicable.

## NOTES TO FINANCIAL STATEMENTS

I. Reverse Repurchase Agreements Transactions Accounted for as a Sale

Not applicable.

J. Real Estate

The Company does not hold any investments in real estate.

K. Investments in Low-Income Housing Tax Credits ("LIHTC")

1. There are four years remaining of unexpired tax credits. The required holding period for the LIHTC investment is fifteen years.
2. There were \$315 of LIHTC and other tax benefits recognized during the year.
3. The balance of the investment recognized in the statement of financial position for the current year is \$687.
4. The Company's LIHTC property is required to meet regulatory benchmarks to comply with the LIHTC program which include the review of tenant files. Oversight of the projects is administered by the State Housing agencies
5. The carrying value of the Company's investment in LIHTC did not exceed 10% of its admitted assets.
6. The Company did not recognize any impairment loss on its LIHTC investment during the year.
7. The Company did not write-down its LIHTC investment or reclassify the LIHTC during the year due to the forfeiture or ineligibility of tax credits.

L. Restricted Assets

1. Restricted Assets (Included Pledge)

Restricted Asset Category	Gross (Admitted & Nonadmitted) Restricted				
	Current Year				
	1	2	3	4	5
	Total General Account (G/A)	G/A Supporting Protected Cell Account Activity (a)	Total Protected Cell Account Restricted Assets	Protected Cell Account Assets Supporting G/A Activity (b)	Total (1 plus 3)
a. Subject to contractual obligation for which liability is not shown	\$0	\$0	\$0	\$0	\$0
b. Collateral held under security lending agreements	3,588,203	-	-	-	3,588,203
c. Subject to repurchase agreements	-	-	-	-	-
d. Subject to reverse repurchase agreements	-	-	-	-	-
e. Subjects to dollar repurchase agreements	-	-	-	-	-
f. Subject to dollar reverse repurchase agreements	-	-	-	-	-
g. Placed under option contracts	-	-	-	-	-
h. Letter stock or securities restricted as to sale - excluding FHLB capital stock	-	-	-	-	-
i. FHLB capital stock	-	-	-	-	-
j. On deposit with states	3,656,944	-	-	-	3,656,944
k. On deposit with other regulatory bodies	-	-	-	-	-
l. Pledged collateral to FHLB (including assets backing funding agreements)	-	-	-	-	-
m. Pledged as collateral not captured in other categories	-	-	-	-	-
n. Other restricted assets	-	-	-	-	-

## NOTES TO FINANCIAL STATEMENTS

o. Total Restricted Assets	\$7,245,147	\$0	\$0	\$0	7,245,147
----------------------------	-------------	-----	-----	-----	-----------

(a) Subset of column 1

(b) Subset of column 3

Restricted Asset Category	Gross (Admitted & Nonadmitted) Restricted			
	6 Total From Prior Year	7 Increase/ (Decrease) (5 minus 6)	8 Total Nonadmitted Restricted	9 Total Admitted Restricted (5 minus 8)
a. Subject to contractual obligation for which liability is not shown	\$0	\$0	\$0	\$0
b. Collateral held under security lending agreements	7,267,602	(3,679,399)	-	3,588,203
c. Subject to repurchase agreements	-	-	-	-
d. Subject to reverse repurchase agreements	-	-	-	-
e. Subjects to dollar repurchase agreements	-	-	-	-
f. Subject to dollar reverse repurchase agreements	-	-	-	-
g. Placed under option contracts	-	-	-	-
h. Letter stock or securities restricted as to sale - excluding FHLB capital stock	-	-	-	-
i. FHLB capital stock	-	-	-	-
j. On deposit with states	3,833,590	(176,646)	-	3,656,944
k. On deposit with other regulatory bodies	-	-	-	-
l. Pledged collateral to FHLB (including assets backing funding agreements)	-	-	-	-
m. Pledged as collateral not captured in other categories	-	-	-	-
n. Other restricted assets	-	-	-	-
<b>o. Total Restricted Assets</b>	<b>\$11,101,192</b>	<b>(\$3,856,045)</b>	<b>\$0</b>	<b>\$7,245,147</b>

Restricted Asset Category	Percentage	
	10 Gross (Admitted & Nonadmitted) Restricted to Total Assets (c)	11 Admitted Restricted to Total Admitted Assets (d)
a. Subject to contractual obligation for which liability is not shown	-	-
b. Collateral held under security lending agreements	1.995	1.995
c. Subject to repurchase agreements	-	-
d. Subject to reverse repurchase agreements	-	-
e. Subjects to dollar repurchase agreements	-	-
f. Subject to dollar reverse repurchase agreements	-	-
g. Placed under option contracts	-	-
h. Letter stock or securities restricted as to sale - excluding FHLB capital stock	-	-
i. FHLB capital stock	-	-
j. On deposit with states	2.033	2.033
k. On deposit with other regulatory bodies	-	-

## NOTES TO FINANCIAL STATEMENTS

l. Pledged collateral to FHLB (including assets backing funding agreements)	-	-
m. Pledged as collateral not captured in other categories	-	-
n. Other restricted assets	-	-
o. Total Restricted Assets	4.028	4.028

(c) Column 5 divided by Asset Page, Column 1, Line 28

(d) Column 9 divided by Asset Page, Column 3, Line 28

2. Detail of Assets Pledged as Collateral Not Captured in Other Categories (Contracts that Share Similar Characteristics, Such as Reinsurance and Derivatives, Are reported in the Aggregate)

Not applicable.

3. Detail of Other Restricted Assets (Contracts that Share Similar Characteristics, Such as Reinsurance and Derivatives, Are reported in the Aggregate)

Not applicable.

4. Collateral Received and Reflected as Assets within the Reporting Entity's Financial Statements

	1	2	3	4
Collateral Assets	Book/ Adjusted Carrying Value (BACV)	Fair Value	% of BACV to Total Assets (Admitted and Nonadmitted)*	% of BACV to Total Admitted Assets**
<b>General Account:</b>				
a. Cash, cash equivalents and short-term investments	-	-	-	-
b. Schedule D, Part 1	-	-	-	-
c. Schedule D, Part 2, Section 1	-	-	-	-
d. Schedule D, Part 2, Section 2	-	-	-	-
e. Schedule B	-	-	-	-
f. Schedule A	-	-	-	-
g. Schedule BA, Part 1	-	-	-	-
h. Schedule DL, Part 1	\$3,588,203	\$3,588,203	1.995	1.995
i. Other	-	-	-	-
<b>j. Total Collateral Assets (a+b+c+d+e+f+g+h+i)</b>	<b>\$3,588,203</b>	<b>\$3,588,203</b>	<b>1.995</b>	<b>1.995</b>
<b>Protected Cell:</b>				
k. Cash, cash equivalents and short-term investments	-	-	-	-
l. Schedule D, Part 1	-	-	-	-
m. Schedule D, Part 2, Section 1	-	-	-	-
n. Schedule D, Part 2, Section 2	-	-	-	-
o. Schedule B	-	-	-	-
p. Schedule A	-	-	-	-
q. Schedule BA, Part 1	-	-	-	-
r. Schedule DL, Part 1	-	-	-	-
s. Other	-	-	-	-
<b>t. Total Collateral Assets (a+b+c+d+e+f+g+h+i)</b>	<b>-</b>	<b>-</b>	<b>-</b>	<b>-</b>

\* j = Column 1 divided by Asset Page, Line 26 (Column 1)

\* t = Column 1 divided by Asset Page, Line 27 (Column 1)

\*\* j = Column 1 divided Asset Page, Line 26 (Column 3)

\*\* t = Column 1 divided Asset Page, Line 27 (Column 3)

## NOTES TO FINANCIAL STATEMENTS

	1	2
	Amount	% of Liability to Total Liabilities *
u. Recognized Obligation to Return Collateral Asset (General Account)	\$3,588,203	82.75
v. Recognized Obligation to Return Collateral Asset (Protected Cell)	\$0	0.00%
* u = Column 1 divided by Liability Page, Line 26 (Column 1)		
* v = Column 1 divided by Liability Page, Line 27 (Column 1)		

M. Working Capital Finance Investments

The Company does not invest in working capital finance investments.

N. Offsetting and Netting of Assets and Liabilities

Not applicable.

O. 5GI Securities

Not applicable.

P. Short Sales

Not applicable.

Q. Prepayment Penalty and Acceleration Fees

Not applicable.

**Note 6 - Joint Ventures, Partnerships and Limited Liability Companies**

A. Investments in joint ventures, partnerships and limited liability companies that exceed 10% of its admitted assets

The Company has no investments in joint ventures, partnerships, or limited liability companies that exceed 10% of its admitted assets

B. Impairments on joint ventures, partnerships or limited liability companies

The Company's limited partnership investment is reported in accordance with SSAP No. 48. These limited partnerships are valued by the equity method using traditional private equity valuation measures. Interim poor performance which indicates a probable inability to recover the carrying amount of the assets leads to impairment losses being recognized by management. The Company did not realize any impairment losses during the year.

**Note 7 - Investment Income**

A. Accrued Investment Income

The Company does not admit investment income due and accrued if amounts are over 90 days past due.

B. Amounts Nonadmitted

No amounts were excluded as of December 31, 2019.

**Note 8 - Derivative Instruments**

The Company's investment activities do not include derivatives. However, the Company may acquire derivatives as additions to bond, common stock, or preferred stock investments. These derivatives are ancillary to the overall investment and are immaterial to the underlying investment portfolio.

**Note 9 - Income Taxes**

A. The components of the net deferred tax asset/(liability) at December 31 are as follows:

1.

	12/31/2019		
	(1)	(2)	(3) (Col 1+2)
	Ordinary	Capital	Total
(a) Gross Deferred Tax Assets	\$ 59,000	\$ 1,502,000	\$ 1,561,000
(b) Statutory Valuation Allowance Adjustments	-	-	-

## NOTES TO FINANCIAL STATEMENTS

(c) Adjusted Gross Deferred Tax Assets (1a – 1b)	59,000	1,502,000	1,561,000
(d) Deferred Tax Assets Nonadmitted	-	-	-
(e) Subtotal Net Admitted Deferred Tax Asset (1c – 1d)	59,000	1,502,000	1,561,000
(f) Deferred Tax Liabilities	365,000	1,660,000	2,025,000
(g) Net Admitted Deferred Tax Asset/(Net Deferred Tax Liability) (1e – 1f)	\$ (306,000)	\$ (158,000)	\$ (464,000)

	12/31/2018		
	(1)	(2)	(3) (Col 1+2)
	Ordinary	Capital	Total
(a) Gross Deferred Tax Assets	\$ 85,000	\$ 1,515,000	\$ 1,600,000
(b) Statutory Valuation Allowance Adjustments	-	-	-
(c) Adjusted Gross Deferred Tax Assets (1a – 1b)	85,000	1,515,000	1,600,000
(d) Deferred Tax Assets Nonadmitted	-	-	-
(e) Subtotal Net Admitted Deferred Tax Asset (1c – 1d)	85,000	1,515,000	1,600,000
(f) Deferred Tax Liabilities	399,000	1,680,000	2,079,000
(g) Net Admitted Deferred Tax Asset/(Net Deferred Tax Liability) (1e – 1f)	\$ (314,000)	\$ (165,000)	\$ (479,000)

	Change		
	(7)	(8)	(9)
	Ordinary	Capital	Total
(a) Gross Deferred Tax Assets	\$ (26,000)	\$ (13,000)	\$ (39,000)
(b) Statutory Valuation Allowance Adjustments	-	-	-
(c) Adjusted Gross Deferred Tax Assets (1a – 1b)	(26,000)	(13,000)	(39,000)
(d) Deferred Tax Assets Nonadmitted	-	-	-
(e) Subtotal Net Admitted Deferred Tax Asset (1c – 1d)	(26,000)	(13,000)	(39,000)
(f) Deferred Tax Liabilities	(34,000)	(20,000)	(54,000)
(g) Net Admitted Deferred Tax Asset/(Net Deferred Tax Liability) (1e – 1f)	\$ 8,000	\$ 7,000	\$ 15,000

2.

	12/31/2019		
	(1)	(2)	(3) (Col 1+2) Total
	Ordinary	Capital	
Admission Calculation Components SSAP No. 101			
(a) Federal Income Taxes Paid In Prior Years Recoverable Through Loss Carrybacks.	\$ 630	\$ 1,317	\$ 1,947
(b) Adjusted Gross Deferred Tax Assets Expected To Be Realized (Excluding The Amount Of Deferred Tax Assets From 2(a) above) After Application of the Threshold Limitation (The Lesser of 2(b)1 and 2(b)2 Below)	-	-	-
1. Adjusted Gross Deferred Tax Assets Expected to be Realized Following the Balance Sheet Date.	-	-	-
2. Adjusted Gross Deferred Tax Assets Allowed per Limitation Threshold.			26,537,580
(c) Adjusted Gross Deferred Tax Assets (Excluding The Amount of Deferred Tax Assets From 2(a) and 2(b) above) Offset by Gross Deferred Tax Liabilities.	58,370	1,500,683	1,559,053
(d) Deferred Tax Assets Admitted as the result of application of SSAP No. 101.			
Total (2(a) + 2(b) + 2(c))	\$ 59,000	\$ 1,502,000	\$ 1,561,000

	12/31/2018		
	(4)	(5)	(6) (Col 4+5) Total
	Ordinary	Capital	
Admission Calculation Components SSAP No. 101			
(a) Federal Income Taxes Paid In Prior Years Recoverable Through Loss Carrybacks.	\$ 62,650	\$ 3,765	\$ 66,415

## NOTES TO FINANCIAL STATEMENTS

(b) Adjusted Gross Deferred Tax Assets Expected To Be Realized (Excluding The Amount Of Deferred Tax Assets From 2(a) above) After Application of the Threshold Limitation (The Lesser of 2(b)1 and 2(b)2 Below)	-	-	-
1. Adjusted Gross Deferred Tax Assets Expected to be Realized Following the Balance Sheet Date.	-	-	-
2. Adjusted Gross Deferred Tax Assets Allowed per Limitation Threshold.			28,805,240
(c) Adjusted Gross Deferred Tax Assets (Excluding The Amount of Deferred Tax Assets From 2(a) and 2(b) above) Offset by Gross Deferred Tax Liabilities.	22,350	1,511,235	1,533,585
(d) Deferred Tax Assets Admitted as the result of application of SSAP No. 101.			
Total (2(a) + 2(b) + 2(c))	\$ 85,000	\$ 1,515,000	\$ 1,600,000

	Change		
	(7)	(8)	(9)
	Ordinary	Capital	(Col 7+8) Total
Admission Calculation Components SSAP No. 101			
(a) Federal Income Taxes Paid In Prior Years Recoverable Through Loss Carrybacks.	\$ (62,020)	\$ (2,448)	\$ (64,468)
(b) Adjusted Gross Deferred Tax Assets Expected To Be Realized (Excluding The Amount Of Deferred Tax Assets From 2(a) above) After Application of the Threshold Limitation (The Lesser of 2(b)1 and 2(b)2 Below)	-	-	-
1. Adjusted Gross Deferred Tax Assets Expected to be Realized Following the Balance Sheet Date.	-	-	-
2. Adjusted Gross Deferred Tax Assets Allowed per Limitation Threshold.			(2,267,660)
(c) Adjusted Gross Deferred Tax Assets (Excluding The Amount of Deferred Tax Assets From 2(a) and 2(b) above) Offset by Gross Deferred Tax Liabilities.	36,020	(10,552)	25,468
(d) Deferred Tax Assets Admitted as the result of application of SSAP No. 101.			
Total (2(a) + 2(b) + 2(c))	\$ (26,000)	\$ (13,000)	\$ (39,000)

3.

	2019	2018
(a) Ratio Percentage Used to Determine Recovery Period And Threshold Limitation Amount	45416.9%	33777.1%
(b) Amount of Adjusted Capital And Surplus Used To Determine Recovery Period And Threshold Limitation In 2(b)2 Above	\$ 175,527,610	\$ 190,919,564

4.

	12/31/2019		12/31/2018		Change	
	(1)	(2)	(3)	(4)	(5)	(6)
	Ordinary	Capital	Ordinary	Capital	Ordinary	Capital
Impact of Tax-Planning Strategies						
(a) Determination of Adjusted Gross Deferred Tax Assets And Net Admitted Deferred Tax Assets, By Tax Character As A Percentage						
1. Adjusted Gross DTAs Amount From Note 9A1(c)	\$59,000	\$1,502,000	\$85,000	\$1,515,000	(\$26,000)	(\$13,000)
2. Percentage Of Adjusted Gross DTAs By Tax Character Attributable To The Impact Of Tax Planning Strategies	0%	0%	0%	0%	0%	0%
3. Net Admitted Adjusted Gross DTAs Amount From Note 9A1(e)	\$59,000	\$1,502,000	\$85,000	\$1,515,000	(\$26,000)	(\$13,000)
4. Percentage of Net Admitted Adjusted Gross DTAs By Tax Character Admitted Because Of The Impact Of Tax Planning Strategies	0%	0%	0%	0%	0%	0%

(b) Does the Company's tax-planning strategies include the use of Reinsurance: Yes \_\_\_\_\_ No X

- B. The Company does not have any DTLs described in SSAP No. 101 Income Taxes, a Replacement of SSAP No. 10R and SSAP No. 10, paragraph 23.
- C. Current income taxes incurred consist of the following major components:

## NOTES TO FINANCIAL STATEMENTS

	(1)	(2)	(3)
	12/31/2019	12/31/2018	(Col 1-2) Change
1. Current Income Tax			
(a) Federal	\$632,417	\$1,412,950	(\$780,533)
(b) Foreign	-	-	-
(c) Subtotal	632,417	1,412,950	(780,533)
(d) Federal income tax on net capital gains	94,583	16,050	78,533
(e) Utilization of capital loss carry-forwards	-	-	-
(f) Other	-	-	-
(g) Federal and foreign income tax incurred	\$727,000	\$1,429,000	(\$702,000)
2. Deferred Tax Assets:			
(a) Ordinary			
(1) Discounting of unpaid losses	\$0	\$0	\$0
(2) Unearned premium reserve	-	-	-
(3) Policyholder reserves	-	-	-
(4) Investments	58,000	58,000	-
(5) Deferred acquisition costs	-	-	-
(6) Policyholder dividends accrual	-	-	-
(7) Fixed Assets	-	-	-
(8) Compensation and benefits accrual	-	26,000	(26,000)
(9) Pension accrual	1,000	1,000	-
(10) Receivables – nonadmitted	-	-	-
(11) Net operating loss carry-forward	-	-	-
(12) Tax credit carry-forward	-	-	-
(13) Other (including items <5% of total ordinary tax assets)	-	-	-
(99) Subtotal	59,000	85,000	(26,000)
(b) Statutory valuation allowance adjustment	-	-	-
(c) Nonadmitted	-	-	-
(d) Admitted ordinary deferred tax assets (2a99 – 2b – 2c)	59,000	85,000	(26,000)
(e) Capital			
(1) Investments	1,502,000	1,515,000	(13,000)
(2) Net capital loss carry-forward	-	-	-
(3) Real estate	-	-	-
(4) Other (including items <5% of total capital tax assets)	-	-	-
(99) Subtotal	1,502,000	1,515,000	(13,000)
(f) Statutory valuation allowance adjustment	-	-	-
(g) Nonadmitted	-	-	-
(h) Admitted capital deferred tax assets (2e99 – 2f – 2g)	1,502,000	1,515,000	(13,000)
(i) Admitted deferred tax assets (2d + 2h)	1,561,000	1,600,000	(39,000)
3. Deferred Tax Liabilities:			
(a) Ordinary			
(1) Investments	360,000	345,000	15,000
(2) Fixed assets	5,000	5,000	



## NOTES TO FINANCIAL STATEMENTS

(3) Deferred and uncollected premium	-	-	-
(4) Policyholder reserves	-	-	-
(5) Other (including items <5% of total ordinary tax liabilities)	-	49,000	(49,000)
(99) Subtotal	365,000	399,000	(34,000)
(b) Capital:			
(1) Investments	1,660,000	1,680,000	(20,000)
(2) Real estate	-	-	-
(3) Other (including items <5% of total capital tax liabilities)	-	-	-
(99) Subtotal	1,660,000	1,680,000	(20,000)
(c) Deferred tax liabilities (3a99 + 3b99)	2,025,000	2,079,000	(54,000)
4. Net deferred tax assets/liabilities (2i - 3c)	(\$464,000)	(\$479,000)	\$15,000

- D. Effective tax rates differ from the current statutory rate of 21% principally due to the effects of tax exempt income, intercompany dividends, deferred intercompany transactions, and revisions to prior year estimates.
- E. The Company has no net operating loss or tax credit carry-forwards available to offset future net income subject to Federal income tax.

The amount of Federal income taxes incurred and available for recoupment in the event of future losses is \$649,000 from the current year and \$749,000 from the preceding year.

The Company does not have deposits admitted under Section 6603 of the Internal Revenue Code.

- F. The Company's Federal income tax return is consolidated with the following entities:

America First Insurance Company	Liberty Mutual Personal Insurance Company
America First Lloyd's Insurance Company	Liberty Mutual Technology Group, Inc.
American Economy Insurance Company	Liberty Northwest Insurance Corporation
American Fire and Casualty Company	Liberty Personal Insurance Company
American States Insurance Company	Liberty RE (Bermuda) Limited
American States Insurance Company of Texas	Liberty Sponsored Insurance (Vermont), Inc.
American States Lloyds Insurance Company	Liberty Surplus Insurance Corporation
American States Preferred Insurance Company	LIH-RE of America Corporation
Barrier Ridge LLC	LIU Specialty Insurance Agency Inc.
Berkeley Holding Company Associates, Inc.	LM General Insurance Company
Berkeley Management Corporation	LM Insurance Corporation
Capitol Court Corporation	LM Property and Casualty Insurance Company
Colorado Casualty Insurance Company	LMCRT-FRE-01 IC
Consolidated Insurance Company	LMHC Massachusetts Holdings Inc.
Diversified Settlements, Inc.	Managed Care Associates Inc.
Emerald City Insurance Agency, Inc.	Mid-American Fire & Casualty Company
Employers Insurance Company of Wausau	Nationale Borg Reinsurance N.V.
Excelsior Insurance Company	North Pacific Insurance Company
Excess Risk Reinsurance Inc.	Ocasco Budget, Inc.
F.B. Beattie & Co., Inc.	OCI Printing, Inc.
First National Insurance Company of America	Ohio Casualty Corporation
First State Agency Inc.	Ohio Security Insurance Company
General America Corporation	Open Seas Solutions, Inc.
General America Corporation of Texas	Oregon Automobile Insurance Company
General Insurance Company of America	Peerless Indemnity Insurance Company
Golden Eagle Insurance Corporation	Peerless Insurance Company
Gulf States AIF, Inc.	Pilot Insurance Services, Inc.
Hawkeye-Security Insurance Company	Rianoc Research Corporation
Indiana Insurance Company	S.C. Bellevue, Inc.
Insurance Company of Illinois	SAFECARE Company, Inc.
Ironshore Holdings (US) Inc.	Safeco Corporation
Ironshore Indemnity Inc.	Safeco General Agency, Inc.
Liberty Specialty Markets Bermuda Limited	Safeco Insurance Company of America
Ironshore Management Inc.	Safeco Insurance Company of Illinois
Ironshore Services Inc.	Safeco Insurance Company of Indiana
Ironshore Specialty Insurance Company	Safeco Insurance Company of Oregon
Ironshore Surety Holdings Inc.	Safeco Lloyds Insurance Company
LEXCO Limited	Safeco National Insurance Company

## NOTES TO FINANCIAL STATEMENTS

Liberty-USA Corporation	Safeco Properties, Inc.
Liberty Energy Canada, Inc.	Safeco Surplus Lines Insurance Company
Liberty Financial Services, Inc.	San Diego Insurance Company
Liberty Hospitality Group, Inc.	SCIT, Inc.
Liberty Insurance Corporation	St. James Insurance Company Ltd.
Liberty Insurance Holdings, Inc.	The First Liberty Insurance Corporation
Liberty Insurance Underwriters Inc.	The Midwestern Indemnity Company
Liberty International Europe Inc.	The National Corporation
Liberty International Holdings Inc.	The Netherlands Insurance Company
Liberty Life Holdings Inc.	The Ohio Casualty Insurance Company
Liberty Lloyds of Texas Insurance Company	Wausau Business Insurance Company
Liberty Management Services, Inc.	Wausau General Insurance Company
Liberty Mexico Holdings Inc.	Wausau Underwriters Insurance Company
Liberty Mutual Agency Corporation	West American Insurance Company
Liberty Mutual Credit Risk Transfer PCC Inc.	Winmar Company, Inc.
Liberty Mutual Fire Insurance Company	Winmar of the Desert, Inc.
Liberty Mutual Group Asset Management Inc.	Winmar Oregon, Inc.
Liberty Mutual Group Inc.	Winmar-Metro, Inc.
Liberty Mutual Holding Company Inc.	Workgrid Software, Inc.
Liberty Mutual Insurance Company	

The method of federal income tax allocation is subject to a written agreement. Allocation is based upon separate return calculations with credit applied for losses as appropriate. The Company has the enforceable right to recoup prior year payments in the event of future losses.

- G. The Company does not expect the Federal and Foreign income tax loss contingencies, as determined in accordance with SSAP No. 5R, Liabilities, Contingencies and Impairments of Assets, with the modifications provided in SSAP No. 101, Income Taxes – A Replacement of SSAP No. 10R and SSAP No. 10, to significantly increase within twelve months of the reporting date.
- H. Repatriation Transition Tax (RTT)
- Not applicable
- I. Alternative Minimum Tax (AMT) Credit
- Not applicable

### **Note 10 - Information Concerning Parent, Subsidiaries, Affiliates, and Other Related Parties**

- A. All of the outstanding shares of capital stock of the Company are held by Safeco Insurance Company of America (“SICOA”), a New Hampshire insurance company. SICOA is wholly owned by Safeco Corporation, an insurance holding company incorporated in Washington. Safeco Corporation is wholly owned by Liberty Mutual Agency Corporation, an insurance holding company incorporated in Delaware. Liberty Mutual Agency Corporation is wholly owned by Liberty Insurance Holdings, Inc., an insurance holding company incorporated in Delaware. Liberty Insurance Holdings, Inc. is wholly owned by Liberty Mutual Insurance Company (“LMIC”), a Massachusetts insurance company. The ultimate parent of LMIC is Liberty Mutual Holding Company Inc., a Massachusetts company.
- B. Transactions between the Company and its affiliates are listed on Schedule Y Part 2.
- C. As of December 31, 2019, the Company had the following capital transactions with its parent and subsidiaries:
- |  |              |
|--|--------------|
| 1. Received capital contributions of           | \$ -         |
| 2. Received return of capital distributions of | \$ -         |
| 3. Contributed capital in the amount of        | \$ -         |
| 4. Received dividends in the amount of         | \$ 1,000,000 |
- D. At December 31, 2019, the Company reported a net \$224,480 due to affiliates. In general, the terms of the intercompany arrangements require settlement at least quarterly.
- E. The Company has not made any guarantees or initiated any undertakings for the benefit of affiliates which result in a material contingent exposure of the Company’s or affiliates’ assets or liabilities.
- F. Refer to Note 26 for information regarding the Inter-Company Reinsurance Agreement.

The Company is a party to a management services agreement (the “Agreement”) with Liberty Mutual Insurance Company (“LMIC”). Under the Agreement, LMIC may provide the Company with office space, supplies, equipment, telephone and wire services, the use of computers and similar machines and services of personnel employed by LMIC and LMGI. Services provided include, but are not limited to, risk underwriting, claims processing, claims adjustments, policyholder services, contract management and administration. LMIC is reimbursed for the cost of all services which it provides under the Agreement.

## NOTES TO FINANCIAL STATEMENTS

The Company is a party to a cash management agreement with Liberty Mutual Insurance Company (“LMIC”) whereby LMIC provides services to the Company.

The Company is a party to an investment management agreement with Liberty Mutual Group Asset Management Inc. (“LMGAM”). Under these agreements, LMGAM provides services to the Company.

The Company is party to a Federal Tax Sharing Agreement between LMHC and affiliates (Refer to Note 9F).

The Company is a party to an Amended and Restated Intercompany Short -Term Borrowing Agreement with Safeco Corporation. Pursuant to the agreement, each party agrees to lend funds to any other party to the agreement for a maximum term of 12 months. The amount of the loan is limited by statutory requirements of the Insurance Holding Company Act of the state of domicile of the Company.

There were no outstanding borrowings as of December 31, 2019.

- G. The Company is a member of a holding company structure as illustrated in Schedule Y Part 1.
- H. The Company does not own shares of any upstream intermediate or ultimate parent, either directly or indirectly via a downstream subsidiary, controlled or affiliated company.
- I. Safeco Insurance Company of Illinois’ investment in its subsidiary, First National Insurance Company of America, is greater than 10% of its admitted assets.

	Assets	Liabilities	Results of Operations
First National Insurance Company of America	\$59,792,267	\$922,165	\$1,383,558

- J. The Company did not recognize any impairment write down for its SCA companies during the statement period.
- K. The Company does not use CARVM in calculating its investment in its foreign subsidiaries.
- L. The Company does not hold any investments in downstream non-insurance holding companies.
- M. All SCA investments

1. Balance Sheet Value (Admitted and Nonadmitted) All SCAs (Except 8bi Entities)

SCA Entity	Percentage of SCA Ownership	Gross Amount	Admitted Amount	Nonadmitted Amount
<b>a. SSAP No. 97 8a Entities</b>				
N/A			\$ -	\$ -
Total SSAP No. 97 8a Entities			\$ -	\$ -
<b>b. SSAP No. 97 8b(ii) Entities</b>				
Total SSAP No. 97 8b(ii) Entities			\$ -	\$ -
<b>c. SSAP No. 97 8b(iii)</b>				
Georgia Tax Credit Fund LM L.P.	0.01%	\$ 687	\$ 687	\$ -
Total SSAP No. 97 8b(iii) Entities		\$ 687	\$ 687	\$ -
<b>d. SSAP No. 97 8b(iv)</b>				
N/A			\$ -	\$ -
Total SSAP No. 97 8b(iv) Entities			\$ -	\$ -
<b>e. Total SSAP No. 97 8b Entities (except 8bi entities) (b+c+d)</b>				
		\$ 687	\$ 687	\$ -
<b>f. Aggregate Total (a+e)</b>				
		\$ 687	\$ 687	\$ -

2. NAIC Filing Response Information

SCA Entity	Type of NAIC Filing	Date of Filing to NAIC	2018 NAIC Valuation Amount	NAIC Response Received Y/N	NAIC Disallowed Entities Valuation Method, Resubmission Required Y/N	Code
<b>a. SSAP No. 97 8a Entities</b>						
N/A						
Total SSAP No. 97 8a Entities			\$ -			
<b>b. SSAP No. 97 8b(ii) Entities</b>						

## NOTES TO FINANCIAL STATEMENTS

N/A						
Total SSAP No. 97 8b(ii) Entities			\$ -			
<b>c. SSAP No. 97 8b(iii)</b> Georgia Tax Credit Fund LM L.P.	N/A	N/A	N/A	N/A	N/A	N/A
Total SSAP No. 97 8b(iii) Entities			\$ -			
<b>d. SSAP No. 97 8b(iv)</b> N/A						
Total SSAP No. 97 8b(iv) Entities			\$ -			
<b>e. Total SSAP No. 97 8b Entities (except 8bi entities) (b+c+d)</b>			\$ -			
<b>f. Aggregate Total (a+e)</b>			\$ -			

N. Investment in Insurance SCAs

The Company does not hold investments in Insurance SCAs for which the audited statutory equity reflects a departure from the NAIC statutory accounting practices and procedures.

O. SCA Loss Tracking

The Company does not hold any investments in SCAs which are in a deficit position.

**Note 11 - Debt**

A. Debt (Including Capital Notes)

The Company has no debt, including capital notes.

B. FHLB (Federal Home Loan Bank) Agreements

Not applicable.

C. There were no outstanding borrowings as of December 31, 2019.

**Note 12 – Retirement Plans, Deferred Compensation, Postemployment Benefits and Compensated Absences and Other Postretirement Benefit Plans**

Eligible employees may participate in the Liberty Mutual Retirement Benefit Plan for U.S. Employees; the Supplemental Income at Retirement Plan (SIRP) which has both a defined benefit component and defined contribution savings component; the Employees' Thrift Incentive Plan (defined-contribution savings); and the U.S. postretirement health and life insurance benefit plans sponsored by the Holding Company, Liberty Mutual Group Inc. (LMGI).

Also, eligible employees may participate in non-contributory defined benefit plans, contributory defined contribution savings plans and health care and life insurance postretirement benefits plans sponsored by Liberty Mutual Insurance Company (LMIC).

The Company has no legal obligation for these plans. Accordingly, these plans' assets and obligations are not disclosed in this note. The costs of the LMGI plans are allocated by LMGI to LMIC, pursuant to an Employee Benefit Plan Cost-Sharing Agreement, and a portion of the LMGI and LMIC benefit plan costs, in turn, are allocated to the Company through the Liberty Mutual Inter-Company Reinsurance Agreement, as described in Note 26.

**Note 13 - Capital and Surplus, Dividend Restrictions and Quasi-Reorganizations**

- The Company has 20,000 shares authorized, issued and outstanding as of December 31, 2019. All shares have a stated par value of \$125.
- Preferred Stock  
Not applicable.
- There are no dividend restrictions.
- On December 31, 2019 the Company paid an ordinary dividend of \$19,091,956 and an extraordinary dividend in the amount of \$1,000,000 to its parent.
- The maximum amount of dividends which can be paid by Illinois-domiciled insurance companies to shareholders without the prior approval of the Insurance Commissioner is the greater of (a) 10% of surplus or (b) net income, subject to the availability of accumulated undistributed earnings. The Company cannot pay a dividend in 2020 without the prior

## NOTES TO FINANCIAL STATEMENTS

approval of the Insurance Commissioner, as its full year dividends paid exceeds the max dividend as calculated according to state guidance.

6. The Company does not have restricted unassigned surplus.
7. The Company had no advances to surplus.
8. The Company does not hold stock for special purposes.
9. The Company does not hold special surplus funds.
10. The portion of unassigned funds (surplus) represented by cumulative net unrealized gains is \$15,021,517 after applicable deferred taxes of \$0.
11. Surplus Notes  
Not applicable.
12. Quasi-reorganization (dollar impact)  
Not applicable.
13. Quasi-reorganization (effective date)  
Not applicable.

### **Note 14 - Contingencies**

#### A. Contingent Commitments

Refer to Note 10E.

#### B. Assessments

The Company is subject to guaranty fund and other assessments by the states in which it writes business. Guaranty fund assessments and premium-based assessments are presumed probable when the premium on which the assessments are expected to be based are written. In the case of loss-based assessments, the event that obligates the entity is an entity incurring the losses on which the assessments are expected to be based.

The Company has no net guaranty fund or other assessment liabilities to report. Refer to Note 26.

#### C. Gain Contingencies

Not applicable

#### D. Claims related extra contractual obligations and bad faith losses stemming from lawsuits

The Company paid the following amounts in the reporting period to settle claims related extra contractual obligations or bad faith claims stemming from lawsuits.

	Direct
Claims related to ECO and bad faith losses paid during the reporting period	\$ 8,874,126

Number of claims where amounts were paid to settle claims related extra contractual obligations or bad faith claims resulting from lawsuits during the reporting period.

(a) 0-25 Claims	(b) 26-50 Claims	(c) 51-100 Claims	(d) 101-500 Claims	(e) More than 500 Claims
	X			

Indicate whether claim count information is disclosed per claim or per claimant  
(f) Per Claim [X]                      (g) Per Claimant [ ]

#### E. Product Warranties

The Company does not write product warranty business.

#### F. Joint and Several Liabilities

The Company is not a participant in any joint and several liabilities.

#### G. All Other Contingencies

## NOTES TO FINANCIAL STATEMENTS

Lawsuits arise against the Company in the normal course of business. Contingent liabilities arising from litigation, income taxes, and other matters are not considered material in relation to the financial position of the Company.

As disclosed in Note 9 F, the Company is a member of a controlled group for federal income tax purposes, and that group includes LMGI. LMGI is the plan sponsor of the Liberty Mutual Retirement Benefit Plan, a qualified plan under federal law. Pursuant to federal law, if LMGI has not made the minimum required contributions with respect to the Liberty Mutual Retirement Benefit Plan, the Company, jointly and severally with all other members of the controlled group, would be contingently liable to make such contributions.

The Company routinely assesses the collectability of its premium receivable balances. The Company does not believe the amounts in excess of non-admitted amounts are material.

### **Note 15 - Leases**

#### A. Lessee Leasing Arrangements

The Company has no net lease obligations. Refer to Note 26.

#### B. Leasing as a Significant Part of Lessor's Business Activities

Leasing is not a significant part of the Company's business activities.

### **Note 16 – Information about Financial Instruments with Off-Balance Sheet Risk and Financial Instruments with Concentrations of Credit Risk**

The Company is not exposed to financial instruments with off-balance sheet risk or concentration of credit risk.

### **Note 17 - Sale, Transfer and Servicing of Financial Assets and Extinguishments of Liabilities**

#### A. Transfers of Receivables Reported as Sales

The Company did not have any transfers of receivables reported as sales.

#### B. Transfers and Servicing of Financial Assets

The Company participates in a Securities Lending Program to generate additional income, whereby certain fixed income and mortgage backed securities are loaned for a period of time from the Company's portfolio to qualifying third parties, via a lending agent. The Company does not participate in term loans; therefore, the Company does not have contractual collateral transactions that extend beyond one year from the reporting date. Borrowers of these securities provide collateral equal to or in excess of 102% of the market value of the loaned securities. Acceptable collateral may be in the form of cash or U.S. Government securities, such as Treasuries and Agency Bonds. The market value of the loaned securities is monitored and additional collateral is obtained if the market value of the collateral falls below 102% of the market value of the loaned securities. Additionally, the lending agent indemnifies the Company against borrower defaults. Cash collateral is carried as an asset with an offsetting liability on the balance sheet, as the collateral is unrestricted and the Company can exercise discretion as to how the collateral is invested. The loaned securities remain a recorded asset of the Company.

At December 31, 2019 the total fair value of securities on loan was \$9,692,723, with corresponding collateral value of \$9,928,075 of which \$3,588,203 represents cash collateral that was reinvested.

#### C. Wash Sales

1. The Company did not have any wash sale transactions during the year.
2. Not applicable.

### **Note 18 – Gain or (Loss) to the Reporting Entity from Uninsured A&H Plans and the Uninsured Portion of Partially Insured Plans**

#### A. Administrative Services Only (ASO) Plans

Not applicable

#### B. Administrative Services Contract (ASC) Plans

Not applicable

#### C. Medicare or Other Similarly Structured Cost Based Reimbursement Contracts

Not applicable

## NOTES TO FINANCIAL STATEMENTS

### Note 19 – Direct Premium Written/Produced by Managing General Agents/Third Party Administrators

The Company has no direct premiums written or produced through managing general agents or third party administrators.

### Note 20 – Fair Value Measurements

A. Inputs Used for Assets and Liabilities Measured at Fair Value

Pursuant to the guidance in SSAP No. 100, *Fair Value Measurements*, the Company carries no assets or liabilities on its balance sheet measured at fair value.

B. Other Fair Value Disclosures

Not applicable.

C. Aggregate Fair Value of All Financial Instruments

Type of Financial Instrument	Aggregate Fair Value	Admitted Assets	(Level 1)	(Level 2)	(Level 3)
Cash, Cash Equivalents and Short Term	\$1,139,453	\$1,139,453	\$ -	\$ -	\$ -
Bonds	\$119,181,880	\$115,368,185	\$50,436,164	\$68,745,716	\$ -
Preferred Stock	-	-	-	-	-
Common Stock	-	-	-	-	-
Securities Lending	3,588,554	3,588,203	-	3,588,554	-
Mortgage Loans	-	-	-	-	-
Surplus Notes	-	-	-	-	-
Derivative Assets	-	-	-	-	-
Total Assets	\$123,909,887	\$120,095,841	\$50,436,164	\$72,334,270	\$ -
Derivative Liabilities	-	-	-	-	-
Total Liabilities	\$ -	\$ -	\$ -	\$ -	\$ -

Type of Financial Instrument	Net Asset Value (NAV)	Not Practicable (Carrying Value)
Cash, Cash Equivalents and Short Term	\$1,139,453	\$ -
Bonds	-	-
Preferred Stock	-	-
Common Stock	-	-
Securities Lending	-	-
Mortgage Loans	-	-
Surplus Notes	-	-
Derivative Assets	-	-
Total Assets	\$1,139,453	-
Derivative Liabilities	-	-
Total Liabilities	\$ -	-

D. Reasons Not Practical to Estimate Fair Value

Not applicable.

E. Instruments Measured at Net Asset Value (NAV)

The Company elected to use NAV for all money market mutual funds in lieu of fair value as NAV is more readily available. These funds are backed by high quality, very liquid short-term instruments and the probability is remote that the funds would be sold for a value other than NAV.

### Note 21 - Other Items

A. Unusual or Infrequent Items

The Company has no unusual or infrequent items to report.

B. Troubled Debt Restructuring: Debtors

Not applicable

## NOTES TO FINANCIAL STATEMENTS

### C. Other Disclosures

#### 1. Interrogatory 6.1

The Company cedes 100% of its business to Liberty Mutual Insurance Company, the lead company in the Liberty Mutual Pool. Liberty Mutual Insurance Company purchases external catastrophe reinsurance coverage.

#### Interrogatory 6.2

As a member of the Liberty Intercompany Pool, the Pool employs industry recognized catastrophe modeling software to estimate the Probable Maximum Loss. For property exposures, we utilize RMS's RiskLink v15.0 and AIR's Touchstone v3.1 software. For workers' compensation, Liberty Mutual utilizes RiskLink v15.0 from RMS.

#### Interrogatory 6.3

The Company cedes 100% of its business to Liberty Mutual Insurance Company, the lead company in the Liberty Mutual Pool. Liberty Mutual Insurance Company purchases external catastrophe reinsurance coverage.

### D. Business Interruption Insurance Recoveries

The Company does not purchase business interruption coverage.

### E. State Transferable and Non-transferable Tax Credit

The Company does not hold state transferable and/or non-transferable tax credits.

### F. Subprime-Mortgage-Related Risk Exposure

1. The Company has not purchased securities characterized by the market as subprime. The Company looks at such factors as average FICO scores, loan to value ratios, and levels of documentation when evaluating securities.
2. The Company does not have any direct exposure through investments in subprime mortgage loans.
3. The Company does not have direct exposure through their investment in residential mortgage-backed securities.
4. The Company does not have any underwriting exposure to sub-prime mortgage risk.

### G. Insurance Linked Securities (ILS) Contracts

The Company did not receive proceeds as the issuer, ceding insurer or counterparty of insurance linked securities

### H. The Amount That Could Be Realized on Life Insurance Where the Reporting Entity is Owner and Beneficiary or Has Otherwise Obtained Rights to Control the Policy

Not applicable

### **Note 22 - Events Subsequent**

The Company evaluated subsequent events through February 21, 2020, the date the annual statement was available to be issued.

There were no events subsequent to December 31, 2019 that would require disclosure.

The Company did not receive any assessments under the Affordable Care Act.

### **Note 23 - Reinsurance**

#### A. Unsecured Reinsurance Recoverable

Excluding amounts arising pursuant to the Intercompany Reinsurance Agreements, there are no unsecured reinsurance recoverables with an individual reinsurer which exceed 3% of policyholder's surplus.

#### B. Reinsurance Recoverable in Dispute

There are no reinsurance recoverable in dispute from an individual reinsurer which exceeds 5% of the Company's surplus. In addition, the aggregate reinsurance recoverable in dispute do not exceed 10% of the Company's surplus.

#### C. Reinsurance Assumed & Ceded

1. The following table sets forth the maximum return premium and commission equity due the reinsurers or the Company if all of the Company's assumed and ceded reinsurance were canceled as of December 31, 2019.



## NOTES TO FINANCIAL STATEMENTS

	Assumed Reinsurance		Ceded Reinsurance		Net	
	Premium Reserve	Commission Equity	Premium Reserve	Commission Equity	Premium Reserve	Commission Equity
Affiliates	\$ -	\$ -	\$ 1,080,525,623	\$ -	\$(1,080,525,623)	\$ -
All Other	\$ -	\$ -	\$ -	\$ -	\$ -	\$ -
Total	\$ -	\$ -	\$ 1,080,525,623	\$ -	\$(1,080,525,623)	\$ -

Direct  
Unearned  
Premium  
Reserve: \$1,080,525,623

2. The Company has no contingent commissions, sliding scale, or other profit sharing commissions for direct, assumed or ceded business.
  3. The Company does not use protected cells as an alternative to traditional reinsurance.
- D. Uncollectible Reinsurance  
The Company did not write off any uncollectible balances in the current year.
- E. Commutation of Ceded Reinsurance  
The Company did not commute any reinsurance treaties in the current year.
- F. Retroactive Reinsurance  
The Company does not have any retroactive reinsurance agreements.
- G. Reinsurance Accounted for as a Deposit  
The Company has not entered into any reinsurance agreements that have been accounted for as deposits as of December 31, 2019.
- H. Disclosures for the Transfer of Property and Casualty Run-off Agreements  
The Company has not entered into any agreements which have been approved by their domiciliary regulator and have qualified pursuant to SSAP No. 62R, *Property and Casualty Reinsurance* to receive P&C Run-off Accounting Treatment.
- I. Certified Reinsurers Downgraded or Status Subject to Revocation.
1. Reporting Entity Ceding to Certified Reinsurer Downgraded or Status Subject to Revocation.  
The Company does not transact business with Certified Reinsurers.
  2. Reporting Entity's Certified Reinsurer Rating Downgrade or Status Subject to Revocation.  
The Company is not a Certified Reinsurer.
- J. Asbestos and Pollution Counterparty Reporting Exception  
The Counterparty reporting party does not apply to the Company.

### **Note 24 - Retrospectively rated Contracts and Contracts Subject to Redetermination**

The Company does not have net accrued retrospective premiums. Refer to Note 26.

The Company did not receive any assessments under the Affordable Care Act.

### **Note 25 - Change in Incurred Losses and Loss Adjustment Expenses**

The Company has no net exposure to changes in incurred losses and loss adjustment expenses. Refer to Note 26.

### **Note 26 - Intercompany Pooling Arrangements**

The Company is a member of the Liberty Mutual Second Amended and Restated Intercompany Reinsurance Agreement consisting of the following affiliated companies:

## NOTES TO FINANCIAL STATEMENTS

		NAIC Company Number	Pooling Companies	Line of Business
Lead				
Company:	Liberty Mutual Insurance Company ("LMIC")	23043	50.00%	All Lines
Affiliated	Peerless Insurance Company ("PIC")	24198	20.00%	All Lines
Pool				
Companies:	Employers Insurance Company of Wausau ("EICOW")	21458	8.00%	All Lines
	Liberty Mutual Fire Insurance Company ("LMFIC")	23035	8.00%	All Lines
	The Ohio Casualty Insurance Company ("OCIC")	24074	8.00%	All Lines
	Safeco Insurance Company of America ("SICOA")	24740	6.00%	All Lines
	American Economy Insurance Company ("AEIC")	19690	0.00%	All Lines
	America First Insurance Company ("AFIC")	12696	0.00%	All Lines
	America Fire and Casualty Company ("AFCIC")	24066	0.00%	All Lines
	America First Lloyd's Insurance Company ("AFLIC")	11526	0.00%	All Lines
	American States Insurance Company ("ASIC")	19704	0.00%	All Lines
	American States Insurance Company of Texas ("ASICT")	19712	0.00%	All Lines
	American States Lloyd's Insurance Company ("ASLCO")	31933	0.00%	All Lines
	American States Preferred Insurance Company ("ASPCO")	37214	0.00%	All Lines
	Colorado Casualty Insurance Company ("CCIC")	41785	0.00%	All Lines
	Consolidated Insurance Company ("CIC")	22640	0.00%	All Lines
	Excelsior Insurance Company ("EIC")	11045	0.00%	All Lines
	First National Insurance Company of America ("FNICA")	24724	0.00%	All Lines
	The First Liberty Insurance Corporation ("FST")	33588	0.00%	All Lines
	General Insurance Company of America ("GICA")	24732	0.00%	All Lines
	Golden Eagle Insurance Corporation ("GEIC")	10836	0.00%	All Lines
	Hawkeye-Security Insurance Company ("HSIC")	36919	0.00%	All Lines
	Insurance Company of Illinois ("ICIL")	26700	0.00%	All Lines
	Indiana Insurance Company ("IIC")	22659	0.00%	All Lines
	Ironshore Indemnity Inc. ("IIP")	23647	0.00%	All Lines
	Ironshore Specialty Insurance Company ("ISIC")	25445	0.00%	All Lines
	Liberty Insurance Corporation ("LIC")	42404	0.00%	All Lines
	Liberty Insurance Underwriters, Inc. ("LIU")	19917	0.00%	All Lines
	Liberty County Mutual Insurance Company ("LCMIC")	19544	0.00%	All Lines
	LM General Insurance Company ("LMGIC")	36447	0.00%	All Lines
	Liberty Lloyd's of Texas Insurance Company ("LLOT")	11041	0.00%	All Lines
	LM Insurance Corporation ("LMC")	33600	0.00%	All Lines
	Liberty Mutual Mid-Atlantic Insurance Company ("LMMAIC")	14486	0.00%	All Lines
	Liberty Mutual Personal Insurance Company ("LMPICO")	12484	0.00%	All Lines
	Liberty Northwest Insurance Corporation ("LNW")	41939	0.00%	All Lines
	Liberty Personal Insurance Company ("LPIC")	11746	0.00%	All Lines
	Liberty Surplus Insurance Corporation ("LSI")	10725	0.00%	All Lines
	Mid-American Fire & Casualty Company ("MAFCC")	23507	0.00%	All Lines
	Montgomery Mutual Insurance Company ("MMIC")	14613	0.00%	All Lines
	The Midwestern Indemnity Company ("MWIC")	23515	0.00%	All Lines
	National Insurance Association ("NIA")	27944	0.00%	All Lines
	The Netherlands Insurance Company ("NIC")	24171	0.00%	All Lines
	North Pacific Insurance Company ("NPIC")	23892	0.00%	All Lines
	Ohio Security Insurance Company ("OSIC")	24082	0.00%	All Lines
	Oregon Automobile Insurance Company ("OAIC")	23922	0.00%	All Lines
	Peerless Indemnity Insurance Company ("PIIC")	18333	0.00%	All Lines
	Safeco Insurance Company of Illinois ("SICIL")	39012	0.00%	All Lines
	Safeco Insurance Company of Indiana ("SICIN")	11215	0.00%	All Lines
	Safeco Insurance Company of Oregon ("SICOR")	11071	0.00%	All Lines
	Safeco Lloyds Insurance Company ("SLICO")	11070	0.00%	All Lines
	Safeco National Insurance Company ("SNIC")	24759	0.00%	All Lines
	Safeco Surplus Lines Insurance Company ("SSLIC")	11100	0.00%	All Lines
	Wausau Business Insurance Company ("WBIC")	26069	0.00%	All Lines
	Wausau General Insurance Company ("WGIC")	26425	0.00%	All Lines
	Wausau Underwriters Insurance Company ("WUIC")	26042	0.00%	All Lines
	West American Insurance Company ("WAIC")	44393	0.00%	All Lines
100% Quota				
Share				
Affiliated	LM Property and Casualty Insurance Company			
Companies:	("LMPAC")	32352	0.00%	All Lines

Under the terms of the Reinsurance Agreements, the sequence of transactions is as follows:

- a. Except for WBIC, WGIC and WUIC, each Affiliated Pool Company cedes its underwriting activity to the Lead Company. WBIC, WGIC and WUIC cede 100% of its direct underwriting activity to EICOW.

## NOTES TO FINANCIAL STATEMENTS

- b. After recording the assumed affiliate transactions noted above, the Lead Company records 100% of its external assumed and ceded reinsurance activity.
- c. The Lead Company's remaining underwriting activity, after processing all internal and external reinsurance, is retroceded to the pool members in accordance with each company's pool participation percentage, as noted above.
- d. There were no members that are parties to reinsurance agreements with non-affiliated reinsurers covering business subject to the pooling agreement and have a contractual right of direct recovery from the non-affiliated reinsurer per the terms of such reinsurance agreements.
- e. There were no discrepancies between entries regarding pooled business on the assumed and ceded reinsurance schedules of the Lead Company and corresponding entries on the assumed and ceded reinsurance schedules of other pooled participants.
- f. The write-off of uncollectible reinsurance is pooled and the provision for reinsurance is recognized by the entity placing the outbound external reinsurance.
- g. The Company has no amounts due (to)/from affiliated entities participating in the Liberty Mutual Second Amended and Restated Intercompany Reinsurance Agreement as of December 31, 2019.

### **Note 27 - Structured Settlements**

- A. The Company has no net exposure to contingent liabilities from the purchase of annuities. Refer to Note 26.
- B. Not applicable.

### **Note 28 - Health Care Receivables**

Not applicable.

### **Note 29 - Participating Policies**

Not applicable.

### **Note 30 - Premium Deficiency Reserves**

1.	Liability carried for premium deficiency reserves	\$ -
2.	Date of the most recent evaluation of this liability	12/31/2019
3.	Was anticipated investment income utilized in the calculation?	No

### **Note 31 - High Dollar Deductible Policies**

Not applicable.

### **Note 32 - Discounting of Liabilities for Unpaid Losses and Unpaid Loss Adjustment Expenses**

The Company has no net loss and loss adjustment expense reserves. Refer to Note 26.

### **Note 33 - Asbestos/Environmental Reserves**

The Company has no net exposure to asbestos and environmental claims. Refer to Note 26.

### **Note 34 - Subscriber Savings Accounts**

The Company is not a reciprocal insurance company.

### **Note 35 - Multiple Peril Crop Insurance**

Not applicable.

### **Note 36 - Financial Guaranty Insurance Contracts**

Not applicable.

# GENERAL INTERROGATORIES

## PART 1 – COMMON INTERROGATORIES

### GENERAL

- 1.1 Is the reporting entity a member of an Insurance Holding Company System consisting of two or more affiliated persons, one or more of which is an insurer? Yes  No
- If yes, complete Schedule Y, Parts 1, 1A and 2.
- 1.2 If yes, did the reporting entity register and file with its domiciliary State Insurance Commissioner, Director or Superintendent or with such regulatory official of the state of domicile of the principal insurer in the Holding Company System, a registration statement providing disclosure substantially similar to the standards adopted by the National Association of Insurance Commissioners (NAIC) in its Model Insurance Holding Company System Regulatory Act and model regulations pertaining thereto, or is the reporting entity subject to standards and disclosure requirements substantially similar to those required by such Act and regulations? Yes  No  N/A
- 1.3 State Regulating? \_\_\_\_\_ Illinois \_\_\_\_\_
- 1.4 Is the reporting entity publicly traded or a member of a publicly traded group? Yes  No
- 1.5 If the response to 1.4 is yes, provide the CIK (Central Index Key) code issued by the SEC for the entity/group.
- 2.1 Has any change been made during the year of this statement in the charter, by-laws, articles of incorporation, or deed of settlement of the reporting entity? Yes  No
- 2.2 If yes, date of change: \_\_\_\_\_
- 3.1 State as of what date the latest financial examination of the reporting entity was made or is being made. \_\_\_\_\_ 12/31/2018 \_\_\_\_\_
- 3.2 State the as of date that the latest financial examination report became available from either the state of domicile or the reporting entity. This date should be the date of the examined balance sheet and not the date the report was completed or released. \_\_\_\_\_ 12/31/2013 \_\_\_\_\_
- 3.3 State as of what date the latest financial examination report became available to other states or the public from either the state of domicile or the reporting entity. This is the release date or completion date of the examination report and not the date of the examination (balance sheet date). \_\_\_\_\_ 06/01/2015 \_\_\_\_\_
- 3.4 By what department or departments?  
 Illinois Department of Financial and Professional Regulation Division of Insurance  
 .....  
 .....  
 .....
- 3.5 Have all financial statement adjustments within the latest financial examination report been accounted for in a subsequent financial statement filed with departments? Yes  No  N/A
- 3.6 Have all of the recommendations within the latest financial examination report been complied with? Yes  No  N/A
- 4.1 During the period covered by this statement, did any agent, broker, sales representative, non-affiliated sales/service organization or any combination thereof under common control (other than salaried employees of the reporting entity) receive credit or commissions for or control a substantial part (more than 20 percent of any major line of business measured on direct premiums) of:
- 4.11 sales of new business? Yes  No
- 4.12 renewals? Yes  No
- 4.2 During the period covered by this statement, did any sales/service organization owned in whole or in part by the reporting entity or an affiliate, receive credit or commissions for or control a substantial part (more than 20 percent of any major line of business measured on direct premiums) of:
- 4.21 sales of new business? Yes  No
- 4.22 renewals? Yes  No
- 5.1 Has the reporting entity been a party to a merger or consolidation during the period covered by this statement? Yes  No
- If yes, complete and file the merger history data file with the NAIC.

## GENERAL INTERROGATORIES

5.2 If yes, provide the name of the entity, NAIC Company Code, and state of domicile (use two letter state abbreviation) for any entity that has ceased to exist as a result of the merger or consolidation.

1 Name of Entity	2 NAIC Company Code	3 State of Domicile
.....	.....	.....
.....	.....	.....

6.1 Has the reporting entity had any Certificates of Authority, licenses or registrations (including corporate registration, if applicable) suspended or revoked by any governmental entity during the reporting period? Yes [ ] No [X]

6.2 If yes, give full information:  
 .....  
 .....  
 .....

7.1 Does any foreign (non-United States) person or entity directly or indirectly control 10% or more of the reporting entity? Yes [ ] No [X]

7.2 If yes,  
 7.21 State the percentage of foreign control. \_\_\_\_\_ %  
 7.22 State the nationality(s) of the foreign person(s) or entity(s); or if the entity is a mutual or reciprocal, the nationality of its manager or attorney-in-fact and identify the type of entity(s) (e.g., individual, corporation, government, manager or attorney-in-fact).

1 Nationality	2 Type of Entity
.....	.....
.....	.....

8.1 Is the company a subsidiary of a bank holding company regulated by the Federal Reserve Board? Yes [ ] No [X]

8.2 If response to 8.1 is yes, please identify the name of the bank holding company.  
 .....  
 .....  
 .....

8.3 Is the company affiliated with one or more banks, thrifts or securities firms? Yes [ ] No [X]

8.4 If response to 8.3 is yes, please provide the names and locations (city and state of the main office) of any affiliates regulated by a federal financial regulatory services agency [i.e. the Federal Reserve Board (FRB), the Office of the Comptroller of the Currency (OCC), the Federal Deposit Insurance Corporation (FDIC) and the Securities Exchange Commission (SEC)] and identify the affiliate's primary federal regulator.

1 Affiliate Name	2 Location (City, State)	3 FRB	4 OCC	5 FDIC	6 SEC
.....	.....				
.....	.....				

9. What is the name and address of the independent certified public accountant or accounting firm retained to conduct the annual audit?  
 Ernst & Young, LLP  
 200 Clarendon Street  
 Boston, MA 02116  
 .....

10.1 Has the insurer been granted any exemptions to the prohibited non-audit services provided by the certified independent public accountant requirements as allowed in Section 7H of the Annual Financial Reporting Model Regulation (Model Audit Rule), or substantially similar state law or regulation? Yes [ ] No [X]

10.2 If response to 10.1 is yes, provide information related to this exemption:  
 .....  
 .....  
 .....

## GENERAL INTERROGATORIES

10.3 Has the insurer been granted any exemptions related to the other requirements of the Annual Financial Reporting Model Regulation as allowed for in Section 18A of the Model Regulation, or substantially similar state law or regulation? Yes [ ] No [X]

10.4 If response to 10.3 is yes, provide information related to this exemption:  
 .....  
 .....  
 .....

10.5 Has the reporting entity established an Audit Committee in compliance with the domiciliary state insurance laws? Yes [X] No [ ] N/A [ ]

10.6 If the response to 10.5 is no or n/a, please explain.  
 .....  
 .....  
 .....

11. What is the name, address and affiliation (officer/employee of the reporting entity or actuary/consultant associated with an actuarial consulting firm) of the individual providing the statement of actuarial opinion/certification?  
 Stephanie Neyenhouse FCAS, MAAA  
 175 Berkeley Street, Boston, MA 02116  
 Vice President and Chief Actuary, Liberty Mutual Group Inc.  
 .....

12.1 Does the reporting entity own any securities of a real estate holding company or otherwise hold real estate indirectly? Yes [ ] No [X]

12.11 Name of real estate holding company	
12.12 Number of parcels involved	
12.13 Total book/adjusted carrying value	\$

12.2 If yes, provide explanation:  
 .....  
 .....  
 .....

13. FOR UNITED STATES BRANCHES OF ALIEN REPORTING ENTITIES ONLY:

13.1 What changes have been made during the year in the United States manager or the United States trustees of the reporting entity?  
 .....  
 .....  
 .....

13.2 Does this statement contain all business transacted for the reporting entity through its United States Branch on risks wherever located? Yes [ ] No [X]

13.3 Have there been any changes made to any of the trust indentures during the year? Yes [ ] No [X]

13.4 If answer to (13.3) is yes, has the domiciliary or entry state approved the changes? Yes [ ] No [ ] N/A [X]

14.1 Are the senior officers (principal executive officer, principal financial officer, principal accounting officer or controller, or persons performing similar functions) of the reporting entity subject to a code of ethics, which includes the following standards?  
 a. Honest and ethical conduct, including the ethical handling of actual or apparent conflicts of interest between personal and professional relationships;  
 b. Full, fair, accurate, timely and understandable disclosure in the periodic reports required to be filed by the reporting entity;  
 c. Compliance with applicable governmental laws, rules, and regulations;  
 d. The prompt internal reporting of violations to an appropriate person or persons identified in the code; and  
 e. Accountability for adherence to the code. Yes [X] No [ ]

14.11 If the response to 14.1 is no, please explain:  
 .....  
 .....  
 .....

## GENERAL INTERROGATORIES

14.2 Has the code of ethics for senior managers been amended? Yes [ ] No [X]

14.21 If the response to 14.2 is yes, provide information related to amendment(s).  
 .....  
 .....  
 .....

14.3 Have any provisions of the code of ethics been waived for any of the specified officers? Yes [ ] No [X]

14.31 If the response to 14.3 is yes, provide the nature of any waiver(s).  
 .....  
 .....  
 .....

15.1 Is the reporting entity the beneficiary of a Letter of Credit that is unrelated to reinsurance where the issuing or confirming bank is not on the SVO Bank List? Yes [ ] No [X]

15.2 If the response to 15.1 is yes, indicate the American Bankers Association (ABA) Routing Number and the name of the issuing or confirming bank of the Letter of Credit and describe the circumstances in which the Letter of Credit is triggered.

1 American Bankers Association (ABA) Routing Number	2 Issuing or Confirming Bank Name	3 Circumstances That Can Trigger the Letter of Credit	4 Amount
.....	.....	.....	.....
.....	.....	.....	.....

## BOARD OF DIRECTORS

16. Is the purchase or sale of all investments of the reporting entity passed upon either by the board of directors or a subordinate committee thereof? Yes [X] No [ ]

17. Does the reporting entity keep a complete permanent record of the proceedings of its board of directors and all subordinate committees thereof? Yes [X] No [ ]

18. Has the reporting entity an established procedure for disclosure to its board of directors or trustees of any material interest or affiliation on the part of any of its officers, directors, trustees or responsible employees that is in conflict or is likely to conflict with the official duties of such person? Yes [X] No [ ]

## FINANCIAL

19. Has this statement been prepared using a basis of accounting other than Statutory Accounting Principles (e.g., Generally Accepted Accounting Principles)? Yes [ ] No [X]

20.1 Total amount loaned during the year (inclusive of Separate Accounts, exclusive of policy loans):

20.11 To directors or other officers	\$ _____
20.12 To stockholders not officers	\$ _____
20.13 Trustees, supreme or grand (Fraternal only)	\$ _____

20.2 Total amount of loans outstanding at the end of year (inclusive of Separate Accounts, exclusive of policy loans):

20.21 To directors or other officers	\$ _____
20.22 To stockholders not officers	\$ _____
20.23 Trustees, supreme or grand (Fraternal only)	\$ _____

21.1 Were any assets reported in this statement subject to a contractual obligation to transfer to another party without the liability for such obligation being reported in the statement? Yes [ ] No [X]

21.2 If yes, state the amount thereof at December 31 of the current year:

21.21 Rented from others	\$ _____
21.22 Borrowed from others	\$ _____
21.23 Leased from others	\$ _____
21.24 Other	\$ _____

## GENERAL INTERROGATORIES

- 22.1 Does this statement include payments for assessments as described in the Annual Statement Instructions other than guaranty fund or guaranty association assessments? Yes [ ] No [X]
- 22.2 If answer is yes:
- |  |    |  |
|--|----|--|
| 22.21 Amount paid as losses or risk adjustment | \$ |  |
| 22.22 Amount paid as expenses                  | \$ |  |
| 22.23 Other amounts paid                       | \$ |  |
- 23.1 Does the reporting entity report any amounts due from parent, subsidiaries or affiliates on Page 2 of this statement? Yes [X] No [ ]
- 23.2 If yes, indicate any amounts receivable from parent included in the Page 2 amount: \$ \_\_\_\_\_

## INVESTMENT

- 24.01 Were all the stocks, bonds and other securities owned December 31 of current year, over which the reporting entity has exclusive control, in the actual possession of the reporting entity on said date? (other than securities lending programs addressed in 24.03) Yes [X] No [ ]
- 24.02 If no, give full and complete information, relating thereto:  
 .....  
 .....  
 .....
- 24.03 For security lending programs, provide a description of the program including value for collateral and amount of loaned securities, and whether collateral is carried on or off-balance sheet. (an alternative is to reference Note 17 where this information is also provided)  
 The Company participates in a Securities Lending Program to generate additional income, whereby certain fixed income and mortgage backed securities are loaned for a period of time from the Company's portfolio to qualifying third parties, via a lending agent. The company does not participate in term loans; therefore, the company does not have contractual collateral transactions that extend beyond one year from the reporting date. Borrowers of these securities provide collateral equal to or in excess of
- 24.04 Does the company's security lending program meet the requirements for a conforming program as outlined in the Risk-Based Capital Instructions? Yes [X] No [ ] N/A [ ]
- 24.05 If answer to 24.04 is yes, report amount of collateral for conforming programs. \$ 9,928,075
- 24.06 If answer to 24.04 is no, report amount of collateral for other programs. \$ \_\_\_\_\_
- 24.07 Does your securities lending program require 102% (domestic securities) and 105% (foreign securities) from the counterparty at the outset of the contract? Yes [X] No [ ] N/A [ ]
- 24.08 Does the reporting entity non-admit when the collateral received from the counterparty falls below 100%? Yes [X] No [ ] N/A [ ]
- 24.09 Does the reporting entity or the reporting entity's securities lending agent utilize the Master Securities Lending Agreement (MSLA) to conduct securities lending? Yes [X] No [ ] N/A [ ]
- 24.10 For the reporting entity's security lending program, state the amount of the following as of December 31 of the current year:
- |  |    |           |
|--|----|-----------|
| 24.101 Total fair value of reinvested collateral assets reported on Schedule DL, Parts 1 and 2                   | \$ | 3,588,203 |
| 24.102 Total book adjusted/carrying value of reinvested collateral assets reported on Schedule DL, Parts 1 and 2 | \$ | 3,588,203 |
| 24.103 Total payable for securities lending reported on the liability page                                       | \$ | 3,588,203 |
- 25.1 Were any of the stocks, bonds or other assets of the reporting entity owned at December 31 of the current year not exclusively under the control of the reporting entity or has the reporting entity sold or transferred any assets subject to a put option contract that is currently in force? (Exclude securities subject to Interrogatory 21.1 and 24.03). Yes [X] No [ ]



## GENERAL INTERROGATORIES

25.2 If yes, state the amount thereof at December 31 of the current year:

	25.21 Subject to repurchase agreements	\$ _____
	25.22 Subject to reverse repurchase agreements	\$ _____
	25.23 Subject to dollar repurchase agreements	\$ _____
	25.24 Subject to reverse dollar repurchase agreements	\$ _____
	25.25 Placed under option agreements	\$ _____
	25.26 Letter stock or securities restricted as to sale - excluding FHLB Capital Stock	\$ _____
	25.27 FHLB Capital Stock	\$ _____
	25.28 On deposit with states	\$ <u>3,656,944</u>
	25.29 On deposit with other regulatory bodies	\$ _____
	25.30 Pledged as collateral - excluding collateral pledged to an FHLB	\$ _____
	25.31 Pledged as collateral to FHLB - including assets backing funding agreements	\$ _____
	25.32 Other	\$ _____

25.3 For category (25.26) provide the following:

1 Nature of Restriction	2 Description	3 Amount
.....	.....	.....
.....	.....	.....

26.1 Does the reporting entity have any hedging transactions reported on Schedule DB? Yes [ ] No [X]

26.2 If yes, has a comprehensive description of the hedging program been made available to the domiciliary state? Yes [ ] No [ ] N/A [X]  
If no, attach a description with this statement.

**LINES 26.3 through 26.5 : FOR LIFE/FRATERNAL REPORTING ENTITIES ONLY:**

26.3 Does the reporting entity utilize derivatives to hedge variable annuity guarantees subject to fluctuations as a result of interest rate sensitivity? Yes [ ] No [X]

26.4 If the response to 26.3 is YES, does the reporting entity utilize:

	26.41 Special accounting provision of SSAP No. 108	Yes [ ] No [X]
	26.42 Permitted accounting practice	Yes [ ] No [X]
	26.43 Other accounting guidance	Yes [ ] No [X]

26.5 By responding YES to 26.41 regarding utilizing the special accounting provisions of SSAP No. 108, the reporting entity attests to the following: Yes [ ] No [X]

- The reporting entity has obtained explicit approval from the domiciliary state.
- Hedging strategy subject to the special accounting provisions is consistent with the requirements of VM-21.
- Actuarial certification has been obtained which indicates that the hedging strategy is incorporated within the establishment of VM-21 reserves and provides the impact of the hedging strategy within the Actuarial Guideline Conditional Tail Expectation Amount.
- Financial Officer Certification has been obtained which indicates that the hedging strategy meets the definition of a Clearly Defined Hedging Strategy within VM-21 and that the Clearly Defined Hedging Strategy is the hedging strategy being used by the company in its actual day-to-day risk mitigation efforts.

27.1 Were any preferred stocks or bonds owned as of December 31 of the current year mandatorily convertible into equity, or, at the option of the issuer, convertible into equity? Yes [ ] No [X]

27.2 If yes, state the amount thereof at December 31 of the current year. \$ \_\_\_\_\_

28. Excluding items in Schedule E - Part 3 - Special Deposits, real estate, mortgage loans and investments held physically in the reporting entity's offices, vaults or safety deposit boxes, were all stocks, bonds and other securities, owned throughout the current year held pursuant to a custodial agreement with a qualified bank or trust company in accordance with Section 1, III - General Examination Considerations, F. Outsourcing of Critical Functions, Custodial or Safekeeping Agreements of the NAIC Financial Condition Examiners Handbook? Yes [X] No [ ]

## GENERAL INTERROGATORIES

28.01 For agreements that comply with the requirements of the NAIC Financial Condition Examiners Handbook, complete the following:

1 Name of Custodian(s)	2 Custodian's Address
.....	.....
.....	.....

28.02 For all agreements that do not comply with the requirements of the NAIC Financial Condition Examiners Handbook, provide the name, location and a complete explanation:

1 Name(s)	2 Location(s)	3 Complete Explanation(s)
.....	.....	.....
.....	.....	.....

28.03 Have there been any changes, including name changes, in the custodian(s) identified in 28.01 during the current year? Yes  No

28.04 If yes, give full and complete information relating thereto:

1 Old Custodian	2 New Custodian	3 Date of Change	4 Reason
.....	.....	.....	.....
.....	.....	.....	.....

28.05 Investment management - Identify all investment advisors, investment managers, broker/dealers, including individuals that have the authority to make investment decisions on behalf of the reporting entity. For assets that are managed internally by employees of the reporting entity, note as such. ["... that have access to the investment accounts"; "...handle securities"]

1 Name Firm or Individual	2 Affiliation
Liberty Mutual Group Asset Management Inc. ....	A .....
.....	.....

28.0597 For those firms/individuals listed in the table for Question 28.05, do any firms/individuals unaffiliated with the reporting entity (i.e., designated with a "U") manage more than 10% of the reporting entity's invested assets? Yes  No

28.0598 For firms/individuals unaffiliated with the reporting entity (i.e., designated with a "U") listed in the table for Question 28.05, does the total assets under management aggregate to more than 50% of the reporting entity's invested assets? Yes  No

28.06 For those firms or individuals listed in the table 28.05 with an affiliation code of "A" (affiliated) or "U" (unaffiliated), provide the information for the table below.

1 Name Firm or Individual	2 Central Registration Depository Number	3 Legal Entity Identifier (LEI)	4 Registered With	5 Investment Management Agreement (IMA) Filed
N/A .....	Liberty Mutual Group .....	N/A .....	N/A .....	DS .....
.....	.....	.....	.....	.....

29.1 Does the reporting entity have any diversified mutual funds reported in Schedule D – Part 2 (diversified according to the Securities and Exchange Commission (SEC) in the Investment Company Act of 1940 [Section 5 (b) (1)])? Yes  No

29.2 If yes, complete the following schedule:

1 CUSIP #	2 Name of Mutual Fund	3 Book/Adjusted Carrying Value
.....	.....	.....
.....	.....	.....

## GENERAL INTERROGATORIES

1 CUSIP #	2 Name of Mutual Fund	3 Book/Adjusted Carrying Value
29.2999 TOTAL		

29.3 For each mutual fund listed in the table above, complete the following schedule:

1 Name of Mutual Fund (from above table)	2 Name of Significant Holding of the Mutual Fund	3 Amount of Mutual Fund's Book/Adjusted Carrying Value Attributable to the Holding	4 Date of Valuation

30. Provide the following information for all short-term and long-term bonds and all preferred stocks. Do not substitute amortized value or statement value for fair value.

	1 Statement (Admitted) Value	2 Fair Value	3 Excess of Statement over Fair Value (-), or Fair Value over Statement (+)
30.1 Bonds	115,368,186	119,181,879	3,813,693
30.2 Preferred stocks			
30.3 Totals	115,368,186	119,181,879	3,813,693

30.4 Describe the sources or methods utilized in determining the fair values:

The primary source for reported fair values is our pricing vendor, Interactive Data Corporation, followed by backfill from Reuters, Bloomberg, Barclays, Merrill Lynch, and Markit for Term Loan securities. Lastly, management determines fair value based on quoted market prices of similar financial instruments or by using industry recognized valuation techniques.

31.1 Was the rate used to calculate fair value determined by a broker or custodian for any of the securities in Schedule D? Yes [ ] No [ X ]

31.2 If the answer to 31.1 is yes, does the reporting entity have a copy of the broker's or custodian's pricing policy (hard copy or electronic copy) for all brokers or custodians used as a pricing source? Yes [ ] No [ X ]

31.3 If the answer to 31.2 is no, describe the reporting entity's process for determining a reliable pricing source for purposes of disclosure of fair value for Schedule D:

.....  
 .....  
 .....  
 .....

32.1 Have all the filing requirements of the Purposes and Procedures Manual of the NAIC Investment Analysis Office been followed? Yes [ X ] No [ ]

32.2 If no, list exceptions:

.....  
 .....

33 By self-designating 5GI securities, the reporting entity is certifying the following elements of each self-designated 5GI security:

- a. Documentation necessary to permit a full credit analysis of the security does not exist or an NAIC CRP credit rating for an FE or PL security is not available.
  - b. Issuer or obligor is current on all contracted interest and principal payments.
  - c. The insurer has an actual expectation of ultimate payment of all contracted interest and principal.
- Has the reporting entity self-designated 5GI securities? Yes [ ] No [ X ]

34 By self-designating PLGI securities, the reporting entity is certifying the following elements of each self-designated PLGI security:

- a. The security was purchased prior to January 1, 2018.
- b. The reporting entity is holding capital commensurate with the NAIC Designation reported for the security.
- c. The NAIC Designation was derived from the credit rating assigned by an NAIC CRP in its legal capacity as an NRSRO which is shown on a current private letter rating held by the insurer and available for examination by state insurance regulators.
- d. The reporting entity is not permitted to share this credit rating of the PL security with the SVO.

## GENERAL INTERROGATORIES

Has the reporting entity self-designated PLGI securities?

Yes [ ] No [X]

35. By assigning FE to a Schedule BA non-registered private fund, the reporting entity is certifying the following elements of each self-designated FE fund:

- a. The shares were purchased prior to January 1, 2019.
- b. The reporting entity is holding capital commensurate with the NAIC Designation reported for the security.
- c. The security had a public credit rating(s) with annual surveillance assigned by an NAIC CRP in its legal capacity as an NRSRO prior to January 1, 2019.
- d. The fund only or predominantly holds bonds in its portfolio.
- e. The current reported NAIC Designation was derived from the public credit rating(s) with annual surveillance assigned by an NAIC CRP in its legal capacity as an NRSRO.
- f. The public credit rating(s) with annual surveillance assigned by an NAIC CRP has not lapsed.

Has the reporting entity assigned FE to Schedule BA non-registered private funds that complied with the above criteria?

Yes [ ] No [X]

### OTHER

36.1 Amount of payments to trade associations, service organizations and statistical or Rating Bureaus, if any?

\$ \_\_\_\_\_

36.2 List the name of the organization and the amount paid if any such payment represented 25% or more of the total payments to trade associations, service organizations and statistical or rating bureaus during the period covered by this statement.

1 Name	2 Amount Paid
.....	\$ .....
.....	\$ .....
.....	\$ .....

37.1 Amount of payments for legal expenses, if any?

\$ \_\_\_\_\_

37.2 List the name of the firm and the amount paid if any such payment represented 25% or more of the total payments for legal expenses during the period covered by this statement.

1 Name	2 Amount Paid
.....	\$ .....
.....	\$ .....
.....	\$ .....

38.1 Amount of payments for expenditures in connection with matters before legislative bodies, officers or departments of government, if any?

\$ \_\_\_\_\_

38.2 List the name of the firm and the amount paid if any such payment represented 25% or more of the total payment expenditures in connection with matters before legislative bodies, officers or departments of government during the period covered by this statement.

1 Name	2 Amount Paid
.....	\$ .....
.....	\$ .....
.....	\$ .....

## GENERAL INTERROGATORIES

### PART 2 – PROPERTY & CASUALTY INTERROGATORIES

1.1 Does the reporting entity have any direct Medicare Supplement Insurance in force? Yes [ ] No [X]

1.2 If yes, indicate premium earned on U.S. business only. \$ \_\_\_\_\_

1.3 What portion of Item (1.2) is not reported on the Medicare Supplement Insurance Experience Exhibit? \$ \_\_\_\_\_

1.31 Reason for excluding

.....

.....

.....

1.4 Indicate amount of earned premium attributable to Canadian and/or Other Alien not included in Item (1.2) above. \$ \_\_\_\_\_

1.5 Indicate total incurred claims on all Medicare Supplement insurance. \$ \_\_\_\_\_

1.6 Individual policies:

Most current three years:

1.61 Total premium earned \$ \_\_\_\_\_

1.62 Total incurred claims \$ \_\_\_\_\_

1.63 Number of covered lives \_\_\_\_\_

All years prior to most current three years:

1.64 Total premium earned \$ \_\_\_\_\_

1.65 Total incurred claims \$ \_\_\_\_\_

1.66 Number of covered lives \_\_\_\_\_

1.7 Group policies:

Most current three years:

1.71 Total premium earned \$ \_\_\_\_\_

1.72 Total incurred claims \$ \_\_\_\_\_

1.73 Number of covered lives \_\_\_\_\_

All years prior to most current three years:

1.74 Total premium earned \$ \_\_\_\_\_

1.75 Total incurred claims \$ \_\_\_\_\_

1.76 Number of covered lives \_\_\_\_\_

2. Health Test:

	1		2	
	Current Year		Prior Year	
2.1 Premium Numerator	\$ _____		\$ _____	
2.2 Premium Denominator	\$ _____		\$ _____	
2.3 Premium Ratio (2.1 / 2.2)				
2.4 Reserve Numerator	\$ _____		\$ _____	
2.5 Reserve Denominator	\$ _____		\$ _____	
2.6 Reserve Ratio (2.4 / 2.5)				

3.1 Does the reporting entity issue both participating and non-participating policies? Yes [ ] No [X]

3.2 If yes, state the amount of calendar year premiums written on:

3.21 Participating policies \$ \_\_\_\_\_

3.22 Non-participating policies \$ 2,207,845,078

4. For Mutual reporting entities and Reciprocal Exchanges only:

4.1 Does the reporting entity issue assessable policies? Yes [ ] No [X]

4.2 Does the reporting entity issue non-assessable policies? Yes [ ] No [X]

4.3 If assessable policies are issued, what is the extent of the contingent liability of the policyholders? \_\_\_\_\_ %

4.4 Total amount of assessments paid or ordered to be paid during the year on deposit notes or contingent premiums. \$ \_\_\_\_\_

5. For Reciprocal Exchanges Only:

5.1 Does the exchange appoint local agents? Yes [ ] No [X]

5.2 If yes, is the commission paid:

5.21 Out of Attorney's-in-fact compensation Yes [ ] No [ ] N/A [X]

5.22 As a direct expense of the exchange Yes [ ] No [ ] N/A [X]

5.3 What expenses of the Exchange are not paid out of the compensation of the Attorney-in-fact?

.....

.....

.....

5.4 Has any Attorney-in-fact compensation, contingent on fulfillment of certain conditions, been deferred? Yes [ ] No [X]

5.5 If yes, give full information

.....

.....

.....

6.1 What provision has this reporting entity made to protect itself from an excessive loss in the event of a catastrophe under a workers' compensation contract issued without limit loss:  
see Note 21C1

.....

.....

.....

## GENERAL INTERROGATORIES

### PART 2 – PROPERTY & CASUALTY INTERROGATORIES

- 6.2 Describe the method used to estimate this reporting entity's probable maximum insurance loss, and identify the type of insured exposures comprising that probable maximum loss, the locations of concentrations of those exposures and the external resources (such as consulting firms or computer software models), if any, used in the estimation process:  
see Note 21C1
- 6.3 What provision has this reporting entity made (such as a catastrophic reinsurance program) to protect itself from an excessive loss arising from the types and concentrations of insured exposures comprising its probable maximum property insurance loss?  
see Note 21C1
- 6.4 Does the reporting entity carry catastrophe reinsurance protection for at least one reinstatement, in an amount sufficient to cover its estimated probable maximum loss attributable to a single loss event or occurrence? Yes [ ] No [X]
- 6.5 If no, describe any arrangements or mechanisms employed by the reporting entity to supplement its catastrophe reinsurance program or to hedge its exposure to unreinsured catastrophic loss  
The Company cedes 100% of its business to Liberty Mutual Insurance Company, the lead company in the Liberty Mutual Pool. Liberty Mutual Insurance Company purchases external catastrophe reinsurance coverage.
- 7.1 Has the reporting entity reinsured any risk with any other entity under a quota share reinsurance contract that includes a provision that would limit the reinsurer's losses below the stated quota share percentage (e.g., a deductible, a loss ratio corridor, a loss cap, an aggregate limit or any similar provisions)? Yes [ ] No [X]
- 7.2 If yes, indicate the number of reinsurance contracts containing such provisions. \_\_\_\_\_
- 7.3 If yes, does the amount of reinsurance credit taken reflect the reduction in quota share coverage caused by any applicable limiting provision(s)? Yes [ ] No [ ]
- 8.1 Has this reporting entity reinsured any risk with any other entity and agreed to release such entity from liability, in whole or in part, from any loss that may occur on this risk, or portion thereof, reinsured? Yes [ ] No [X]
- 8.2 If yes, give full information
- 9.1 Has the reporting entity ceded any risk under any reinsurance contract (or under multiple contracts with the same reinsurer or its affiliates) for which during the period covered by the statement: (i) it recorded a positive or negative underwriting result greater than 5% of prior year-end surplus as regards policyholders or it reported calendar year written premium ceded or year-end loss and loss expense reserves ceded greater than 5% of prior year-end surplus as regards policyholders; (ii) it accounted for that contract as reinsurance and not as a deposit; and (iii) the contract(s) contain one or more of the following features or other features that would have similar results:  
(a) A contract term longer than two years and the contract is noncancellable by the reporting entity during the contract term;  
(b) A limited or conditional cancellation provision under which cancellation triggers an obligation by the reporting entity, or an affiliate of the reporting entity, to enter into a new reinsurance contract with the reinsurer, or an affiliate of the reinsurer;  
(c) Aggregate stop loss reinsurance coverage;  
(d) A unilateral right by either party (or both parties) to commute the reinsurance contract, whether conditional or not, except for such provisions which are only triggered by a decline in the credit status of the other party;  
(e) A provision permitting reporting of losses, or payment of losses, less frequently than on a quarterly basis (unless there is no activity during the period); or  
(f) Payment schedule, accumulating retentions from multiple years or any features inherently designed to delay timing of the reimbursement to the ceding entity. Yes [ ] No [X]
- 9.2 Has the reporting entity during the period covered by the statement ceded any risk under any reinsurance contract (or under multiple contracts with the same reinsurer or its affiliates), for which, during the period covered by the statement, it recorded a positive or negative underwriting result greater than 5% of prior year-end surplus as regards policyholders or it reported calendar year written premium ceded or year-end loss and loss expense reserves ceded greater than 5% of prior year-end surplus as regards policyholders; excluding cessions to approved pooling arrangements or to captive insurance companies that are directly or indirectly controlling, controlled by, or under common control with (i) one or more unaffiliated policyholders of the reporting entity, or (ii) an association of which one or more unaffiliated policyholders of the reporting entity is a member where:  
(a) The written premium ceded to the reinsurer by the reporting entity or its affiliates represents fifty percent (50%) or more of the entire direct and assumed premium written by the reinsurer based on its most recently available financial statement; or  
(b) Twenty-five percent (25%) or more of the written premium ceded to the reinsurer has been retroceded back to the reporting entity or its affiliates in a separate reinsurance contract. Yes [ ] No [X]
- 9.3 If yes to 9.1 or 9.2, please provide the following information in the Reinsurance Summary Supplemental Filing for General Interrogatory 9:  
(a) The aggregate financial statement impact gross of all such ceded reinsurance contracts on the balance sheet and statement of income;  
(b) A summary of the reinsurance contract terms and indicate whether it applies to the contracts meeting the criteria in 9.1 or 9.2; and  
(c) A brief discussion of management's principle objectives in entering into the reinsurance contract including the economic purpose to be achieved.
- 9.4 Except for transactions meeting the requirements of paragraph 37 of SSAP No. 62R, Property and Casualty Reinsurance, has the reporting entity ceded any risk under any reinsurance contract (or multiple contracts with the same reinsurer or its affiliates) during the period covered by the financial statement, and either:  
(a) Accounted for that contract as reinsurance (either prospective or retroactive) under statutory accounting principles ("SAP") and as a deposit under generally accepted accounting principles ("GAAP"); or  
(b) Accounted for that contract as reinsurance under GAAP and as a deposit under SAP? Yes [ ] No [X]
- 9.5 If yes to 9.4, explain in the Reinsurance Summary Supplemental Filing for General Interrogatory 9 (Section D) why the contract(s) is treated differently for GAAP and SAP.
- 9.6 The reporting entity is exempt from the Reinsurance Attestation Supplement under one or more of the following criteria:  
(a) The entity does not utilize reinsurance; or, Yes [ ] No [X]  
(b) The entity only engages in a 100% quota share contract with an affiliate and the affiliated or lead company has filed an attestation supplement; or Yes [ ] No [X]  
(c) The entity has no external cessions and only participates in an intercompany pool and the affiliated or lead company has filed an attestation supplement. Yes [X] No [ ]

## GENERAL INTERROGATORIES

### PART 2 – PROPERTY & CASUALTY INTERROGATORIES

10. If the reporting entity has assumed risks from another entity, there should be charged on account of such reinsurances a reserve equal to that which the original entity would have been required to charge had it retained the risks. Has this been done? Yes [ ] No [ ] N/A [X]
- 11.1 Has the reporting entity guaranteed policies issued by any other entity and now in force: Yes [ ] No [X]
- 11.2 If yes, give full information  
 .....  
 .....
- 12.1 If the reporting entity recorded accrued retrospective premiums on insurance contracts on Line 15.3 of the asset schedule, Page 2, state the amount of corresponding liabilities recorded for:
- |   |          |
|---|----------|
| 12.11 Unpaid losses   | \$ _____ |
| 12.12 Unpaid underwriting expenses (including loss adjustment expenses) | \$ _____ |
- 12.2 Of the amount on Line 15.3, Page 2, state the amount that is secured by letters of credit, collateral and other funds? \$ \_\_\_\_\_
- 12.3 If the reporting entity underwrites commercial insurance risks, such as workers' compensation, are premium notes or promissory notes accepted from its insureds covering unpaid premiums and/or unpaid losses? Yes [ ] No [X] N/A [ ]
- 12.4 If yes, provide the range of interest rates charged under such notes during the period covered by this statement:
- |            |         |
|------------|---------|
| 12.41 From | _____ % |
| 12.42 To   | _____ % |
- 12.5 Are letters of credit or collateral and other funds received from insureds being utilized by the reporting entity to secure premium notes or promissory notes taken by a reporting entity or to secure any of the reporting entity's reported direct unpaid loss reserves, including unpaid losses under loss deductible features of commercial policies? Yes [ ] No [X]
- 12.6 If yes, state the amount thereof at December 31 of current year:
- |                                  |          |
|----------------------------------|----------|
| 12.61 Letters of Credit          | \$ _____ |
| 12.62 Collateral and other funds | \$ _____ |
- 13.1 Largest net aggregate amount insured in any one risk (excluding workers' compensation): \$ \_\_\_\_\_
- 13.2 Does any reinsurance contract considered in the calculation of this amount include an aggregate limit of recovery without also including a reinstatement provision? Yes [ ] No [X]
- 13.3 State the number of reinsurance contracts (excluding individual facultative risk certificates, but including facultative programs, automatic facilities or facultative obligatory contracts) considered in the calculation of the amount. \_\_\_\_\_
- 14.1 Is the company a cedant in a multiple cedant reinsurance contract? Yes [X] No [ ]
- 14.2 If yes, please describe the method of allocating and recording reinsurance among the cedants:  
 Premiums and recoverables were allocated pursuant to the intercompany pooling agreement.  
 .....  
 .....
- 14.3 If the answer to 14.1 is yes, are the methods described in item 14.2 entirely contained in the respective multiple cedant reinsurance contracts? Yes [ ] No [X]
- 14.4 If the answer to 14.3 is no, are all the methods described in 14.2 entirely contained in written agreements? Yes [X] No [ ]
- 14.5 If the answer to 14.4 is no, please explain:  
 N/A  
 .....  
 .....
- 15.1 Has the reporting entity guaranteed any financed premium accounts? Yes [ ] No [X]
- 15.2 If yes, give full information  
 .....  
 .....
- 16.1 Does the reporting entity write any warranty business? Yes [ ] No [X]  
 If yes, disclose the following information for each of the following types of warranty coverage:
- |                  |    | 1<br>Direct Losses<br>Incurred | 2<br>Direct Losses<br>Unpaid | 3<br>Direct Written<br>Premium | 4<br>Direct Premium<br>Unearned | 5<br>Direct Premium<br>Earned |
|------------------|----|--------------------------------|------------------------------|--------------------------------|---------------------------------|-------------------------------|
| 16.11 Home       | \$ | _____                          | \$                           | _____                          | \$                              | _____                         |
| 16.12 Products   | \$ | _____                          | \$                           | _____                          | \$                              | _____                         |
| 16.13 Automobile | \$ | _____                          | \$                           | _____                          | \$                              | _____                         |
| 16.14 Other*     | \$ | _____                          | \$                           | _____                          | \$                              | _____                         |

\* Disclose type of coverage: \_\_\_\_\_

## GENERAL INTERROGATORIES

### PART 2 – PROPERTY & CASUALTY INTERROGATORIES

17.1 Does the reporting entity include amounts recoverable on unauthorized reinsurance in Schedule F – Part 3 that is exempt from the statutory provision for unauthorized reinsurance? Yes [ ] No [X]

Incurred but not reported losses on contracts in force prior to July 1, 1984, and not subsequently renewed are exempt from the statutory provision for unauthorized reinsurance. Provide the following information for this exemption:

17.11 Gross amount of unauthorized reinsurance in Schedule F – Part 3 exempt from the statutory provision for unauthorized reinsurance	\$ _____
17.12 Unfunded portion of Interrogatory 17.11	\$ _____
17.13 Paid losses and loss adjustment expenses portion of Interrogatory 17.11	\$ _____
17.14 Case reserves portion of Interrogatory 17.11	\$ _____
17.15 Incurred but not reported portion of Interrogatory 17.11	\$ _____
17.16 Unearned premium portion of Interrogatory 17.11	\$ _____
17.17 Contingent commission portion of Interrogatory 17.11	\$ _____

18.1 Do you act as a custodian for health savings accounts? Yes [ ] No [X]

18.2 If yes, please provide the amount of custodial funds held as of the reporting date. \$ \_\_\_\_\_

18.3 Do you act as an administrator for health savings accounts? Yes [ ] No [X]

18.4 If yes, please provide the balance of the funds administered as of the reporting date. \$ \_\_\_\_\_

19. Is the reporting entity licensed or chartered, registered, qualified, eligible or writing business in at least two states? Yes [X] No [ ]

19.1 If no, does the reporting entity assume reinsurance business that covers risks residing in at least one state other than the state of domicile of the reporting entity? Yes [ ] No [X]



## FIVE – YEAR HISTORICAL DATA

Show amounts in whole dollars only, no cents; show percentages to one decimal place, i.e., 17.6.

	1	2	3	4	5
	2019	2018	2017	2016	2015
<b>Gross Premiums Written (Page 8, Part 1B, Cols. 1, 2 &amp; 3)</b>					
1. Liability lines (Lines 11.1, 11.2, 16, 17.1, 17.2, 17.3, 18.1, 18.2, 19.1, 19.2 & 19.3, 19.4)	1,106,781,076	1,135,467,365	1,109,423,647	1,020,242,059	984,092,088
2. Property lines (Lines 1, 2, 9, 12, 21 & 26)	806,283,637	804,906,599	784,028,724	747,901,586	719,988,496
3. Property and liability combined lines (Lines 3, 4, 5, 8, 22 & 27)	294,780,365	267,301,185	265,823,191	270,029,084	276,754,173
4. All other lines (Lines 6, 10, 13, 14, 15, 23, 24, 28, 29, 30 & 34)					
5. Nonproportional reinsurance lines (Lines 31, 32 & 33)					
6. Total (Line 35)	2,207,845,078	2,207,675,149	2,159,275,562	2,038,172,729	1,980,834,757
<b>Net Premiums Written (Page 8, Part 1B, Col. 6)</b>					
7. Liability lines (Lines 11.1, 11.2, 16, 17.1, 17.2, 17.3, 18.1, 18.2, 19.1, 19.2 & 19.3, 19.4)					
8. Property lines (Lines 1, 2, 9, 12, 21 & 26)					
9. Property and liability combined lines (Lines 3, 4, 5, 8, 22 & 27)					
10. All other lines (Lines 6, 10, 13, 14, 15, 23, 24, 28, 29, 30 & 34)					
11. Nonproportional reinsurance lines (Lines 31, 32 & 33)					
12. Total (Line 35)					
<b>Statement of Income (Page 4)</b>					
13. Net underwriting gain (loss) (Line 8)					
14. Net investment gain (loss) (Line 11)	4,925,376	3,413,292	3,129,030	2,592,623	2,647,781
15. Total other income (Line 15)		48	34,890	(2,150)	(21,670)
16. Dividends to policyholders (Line 17)					
17. Federal and foreign income taxes incurred (Line 19)	632,417	1,412,950	951,459	1,036,759	1,171,387
18. Net income (Line 20)	4,292,959	2,000,390	2,212,461	1,553,714	1,454,724
<b>Balance Sheet Lines (Pages 2 and 3)</b>					
19. Total admitted assets excluding protected cell business (Page 2, Line 26, Col. 3)	179,864,032	201,125,783	194,585,009	190,512,493	185,425,346
20. Premiums and considerations (Page 2, Col. 3)					
20.1 In course of collection (Line 15.1)					
20.2 Deferred and not yet due (Line 15.2)					
20.3 Accrued retrospective premiums (Line 15.3)					
21. Total liabilities excluding protected cell business (Page 3, Line 26)	4,336,422	10,206,219	7,176,015	6,922,215	4,859,305
22. Losses (Page 3, Line 1)					
23. Loss adjustment expenses (Page 3, Line 3)					
24. Unearned premiums (Page 3, Line 9)					
25. Capital paid up (Page 3, Lines 30 & 31)	2,500,000	2,500,000	2,500,000	2,500,000	2,500,000
26. Surplus as regards policyholders (Page 3, Line 37)	175,527,610	190,919,564	187,408,994	183,590,279	180,566,041
<b>Cash Flow (Page 5)</b>					
27. Net cash from operations (Line 11)	5,146,513	767,425	3,373,416	4,369,678	2,729,250
<b>Risk-Based Capital Analysis</b>					
28. Total adjusted capital	175,527,610	190,919,564	187,408,994	183,590,279	180,566,041
29. Authorized control level risk-based capital	386,481	565,234	581,059	581,795	606,388
<b>Percentage Distribution of Cash, Cash Equivalents and Invested Assets</b> (Page 2, Col. 3) (Item divided by Page 2, Line 12, Col. 3) x 100.0					
30. Bonds (Line 1)	64.5	66.3	66.9	65.6	67.5
31. Stocks (Lines 2.1 & 2.2)	32.9	29.2	29.7	29.8	30.1
32. Mortgage loans on real estate (Lines 3.1 and 3.2)					
33. Real estate (Lines 4.1, 4.2 & 4.3)					
34. Cash, cash equivalents and short-term investments (Line 5)	0.6	0.9	0.2	2.2	0.5
35. Contract loans (Line 6)					
36. Derivatives (Line 7)					
37. Other invested assets (Line 8)			0.1	0.2	0.6
38. Receivables for securities (Line 9)			0.5		
39. Securities lending reinvested collateral assets (Line 10)	2.0	3.6	2.5	2.3	1.4
40. Aggregate write-ins for invested assets (Line 11)					
41. Cash, cash equivalents and invested assets (Line 12)	100.0	100.0	100.0	100.0	100.0
<b>Investments in Parent, Subsidiaries and Affiliates</b>					
42. Affiliated bonds, (Sch. D, Summary, Line 12, Col. 1)					
43. Affiliated preferred stocks (Sch. D, Summary, Line 18, Col. 1)					
44. Affiliated common stocks (Sch. D, Summary, Line 24, Col. 1)	58,870,102	58,492,544	57,451,278	56,423,843	55,381,544
45. Affiliated short-term investments (subtotals included in Schedule DA Verification, Col. 5, Line 10)					
46. Affiliated mortgage loans on real estate					
47. All other affiliated	687	865	1,049	1,230	1,410
48. Total of above Lines 42 to 47	58,870,789	58,493,409	57,452,327	56,425,073	55,382,954
49. Total investment in parent included in Lines 42 to 47 above					
50. Percentage of investments in parent, subsidiaries and affiliates to surplus as regards policyholders (Line 48 above divided by Page 3, Col. 1, Line 37 x 100.0)	33.5		30.7	30.7	30.7

## FIVE – YEAR HISTORICAL DATA (Continued)

	1	2	3	4	5
	2019	2018	2017	2016	2015
<b>Capital and Surplus Accounts (Page 4)</b>					
51. Net unrealized capital gains (losses) (Line 24)	388,364	1,030,099	1,027,255	1,073,581	1,052,610
52. Dividends to stockholders (Line 35)	(20,091,956)				
53. Change in surplus as regards policyholders for the year (Line 38)	(15,392,713)	3,510,569	3,818,716	3,024,237	2,553,581
<b>Gross Losses Paid (Page 9, Part 2, Cols. 1 &amp; 2)</b>					
54. Liability lines (Lines 11.1, 11.2, 16, 17.1, 17.2, 17.3, 18.1, 18.2, 19.1, 19.2 & 19.3, 19.4)	693,179,075	662,231,462	620,311,649	596,058,704	528,517,362
55. Property lines (Lines 1, 2, 9, 12, 21 & 26)	465,591,075	440,119,073	434,227,967	416,454,878	363,531,390
56. Property and liability combined lines (Lines 3, 4, 5, 8, 22 & 27)	183,022,663	173,323,703	192,268,421	122,753,614	138,770,695
57. All other lines (Lines 6, 10, 13, 14, 15, 23, 24, 28, 29, 30 & 34)					
58. Nonproportional reinsurance lines (Lines 31, 32 & 33)					
59. Total (Line 35)	1,341,792,813	1,275,674,238	1,246,808,037	1,135,267,196	1,030,819,447
<b>Net Losses Paid (Page 9, Part 2, Col. 4)</b>					
60. Liability lines (Lines 11.1, 11.2, 16, 17.1, 17.2, 17.3, 18.1, 18.2, 19.1, 19.2 & 19.3, 19.4)					
61. Property lines (Lines 1, 2, 9, 12, 21 & 26)					
62. Property and liability combined lines (Lines 3, 4, 5, 8, 22 & 27)					
63. All other lines (Lines 6, 10, 13, 14, 15, 23, 24, 28, 29, 30 & 34)					
64. Nonproportional reinsurance lines (Lines 31, 32 & 33)					
65. Total (Line 35)					
<b>Operating Percentages (Page 4)</b> (Item divided by Page 4, Line 1) x 100.0					
66. Premiums earned (Line 1)	100.0	100.0	100.0	100.0	100.0
67. Losses incurred (Line 2)					
68. Loss expenses incurred (Line 3)					
69. Other underwriting expenses incurred (Line 4)					
70. Net underwriting gain (loss) (Line 8)					
<b>Other Percentages</b>					
71. Other underwriting expenses to net premiums written (Page 4, Lines 4 + 5 - 15 divided by Page 8, Part 1B, Col. 6, Line 35 x 100.0)					
72. Losses and loss expenses incurred to premiums earned (Page 4, Lines 2 + 3 divided by Page 4, Line 1 x 100.0)					
73. Net premiums written to policyholders' surplus (Page 8, Part 1B, Col. 6, Line 35 divided by Page 3, Line 37, Col. 1 x 100.0)					
<b>One Year Loss Development (\$000 omitted)</b>					
74. Development in estimated losses and loss expenses incurred prior to current year (Schedule P, Part 2-Summary, Line 12, Col. 11)					
75. Percent of development of losses and loss expenses incurred to policyholders' surplus of prior year end (Line 74 above divided by Page 4, Line 21, Col. 1 x 100.0)					
<b>Two Year Loss Development (\$000 omitted)</b>					
76. Development in estimated losses and loss expenses incurred 2 years before the current year and prior year (Schedule P, Part 2-Summary, Line 12, Col. 12)					
77. Percent of development of losses and loss expenses incurred to reported policyholders' surplus of second prior year end (Line 76 above divided by Page 4, Line 21, Col. 2 x 100.0)					

NOTE: If a party to a merger, have the two most recent years of this exhibit been restated due to a merger in compliance with the disclosure

Yes [ ] No [ ]

requirements of SSAP No. 3, Accounting Changes and Correction of Errors?

If no, please explain:

.....  
 .....  
 .....

**NONE**    **Schedule P - Part 1 - Summary**

**NONE**    **Schedule P - Part 2, 3, 4 - Summary**

## SCHEDULE T - EXHIBIT OF PREMIUMS WRITTEN Allocated By States and Territories

States, Etc.	1	Gross Premiums, Including Policy and Membership Fees Less Return Premiums and Premiums on Policies Not Taken		4	5	6	7	8	9
		Active Status (a)	2						
		Direct Premiums Written	Direct Premiums Earned	Dividends Paid or Credited to Policyholders on Direct Business	Direct Losses Paid (Deducting Salvage)	Direct Losses Incurred	Direct Losses Unpaid	Finance and Service Charges Not Included in Premiums	Direct Premium Written for Federal Purchasing Groups (Included in Col. 2)
1. Alabama	AL	L	33,168,057	35,003,625		19,713,440	23,112,670	17,320,246	
2. Alaska	AK	L	508,479	478,965		187,795	256,387	28,612	
3. Arizona	AZ	L	3,878,477	3,728,219		2,753,069	3,660,511	3,015,401	
4. Arkansas	AR	L	54,769,237	55,239,087		32,742,499	31,988,093	18,605,602	
5. California	CA	L	76,994,317	73,960,951		67,330,953	39,113,156	61,720,221	
6. Colorado	CO	L				88,348	(210)	269	
7. Connecticut	CT	L	110,738,480	113,232,383		70,960,139	87,410,773	99,755,076	
8. Delaware	DE	N				6,784	6,784		
9. District of Columbia	DC	N				110,053	97,552		
10. Florida	FL	L	301,790,681	314,558,636		220,175,977	270,276,620	222,240,510	
11. Georgia	GA	L	52,141,884	49,140,542		25,345,648	28,593,725	21,250,047	
12. Hawaii	HI	N				4,317	4,317		
13. Idaho	ID	L	134,793,151	127,148,303		67,000,094	70,915,189	34,863,914	
14. Illinois	IL	L	155,964,220	154,978,617		89,554,227	92,871,646	56,426,801	
15. Indiana	IN	L				277,299	190,462	(126,812)	
16. Iowa	IA	L	589,388	543,950		391,203	294,149	169,348	
17. Kansas	KS	L	919,311	897,205		424,839	450,636	266,082	
18. Kentucky	KY	L	102,440,142	100,360,008		56,574,993	57,765,035	45,948,142	
19. Louisiana	LA	L				186,749	218,633	58,382	
20. Maine	ME	N				6,740	6,740		
21. Maryland	MD	L	2,001,533	2,070,567		870,077	701,803	804,457	
22. Massachusetts	MA	N				165,423	141,115	1,001	
23. Michigan	MI	L	99,309,977	95,649,866		57,886,103	28,433,468	171,598,398	
24. Minnesota	MN	L	46,357,032	41,422,538		31,616,572	39,263,497	14,275,557	
25. Mississippi	MS	L	117,980,346	116,196,889		69,221,387	80,430,526	46,499,913	
26. Missouri	MO	L	179,997,945	183,198,722		111,886,595	112,814,390	101,100,114	
27. Montana	MT	L	89,409,046	88,913,786		60,501,369	64,918,964	27,891,165	
28. Nebraska	NE	L	17,126,037	17,383,359		12,288,003	12,435,427	8,535,960	
29. Nevada	NV	L	55,437,746	56,244,945		34,411,293	36,194,599	27,576,075	
30. New Hampshire	NH	N				3,289	3,289		
31. New Jersey	NJ	N				62,513	55,013	3,844	
32. New Mexico	NM	L				1,021	1,021		
33. New York	NY	N				100,185	90,723	1	
34. North Carolina	NC	N				112,690	115,090	7,500	
35. North Dakota	ND	N				6,383	6,383		
36. Ohio	OH	L	165,223,671	163,698,826		87,481,438	96,171,468	56,652,947	
37. Oklahoma	OK	L	1,334,772	1,404,788		291,420	118,664	285,699	
38. Oregon	OR	L	10,571,529	6,025,990		402,982	1,094,251	1,028,517	
39. Pennsylvania	PA	L	56,060,318	56,326,238		30,196,562	33,036,702	16,299,836	
40. Rhode Island	RI	N				9,525	5,428		
41. South Carolina	SC	N				52,507	52,507		
42. South Dakota	SD	N				3,111	3,111		
43. Tennessee	TN	L	84,807,987	89,217,269		51,663,811	51,690,846	33,245,827	
44. Texas	TX	L	3,880,697	4,416,706		2,200,377	1,885,404	1,464,429	
45. Utah	UT	L	51,229,404	45,889,518		26,512,342	32,058,355	19,186,313	
46. Vermont	VT	N				40,174	40,775	601	
47. Virginia	VA	L	22,900,672	21,599,665		11,581,718	11,279,891	4,952,725	
48. Washington	WA	L	117,855,185	118,150,019		66,453,300	74,676,718	70,989,770	
49. West Virginia	WV	N				21,650	21,650		
50. Wisconsin	WI	L	30,605,575	27,517,438		14,074,578	17,455,888	16,196,142	
51. Wyoming	WY	L	27,059,782	26,760,313		17,839,245	18,977,218	8,240,160	
52. American Samoa	AS	N							
53. Guam	GU	N							
54. Puerto Rico	PR	N							
55. U.S. Virgin Islands	VI	N							
56. Northern Mariana Islands	MP	N							
57. Canada	CAN	N							
58. Aggregate Other Alien	OT	X X X							
59. Totals	(a) 36		2,207,845,078	2,191,357,933		1,341,792,809	1,421,407,052	1,208,378,792	

DETAILS OF WRITE-INS									
58001.		X X X							
58002.		X X X							
58003.		X X X							
58998.	Summary of remaining write-ins for Line 58 from overflow page	X X X							
58999.	Totals (Lines 58001 through 58003 plus 58998) (Line 58 above)	X X X							

**Explanation of basis of allocation of premiums by states, etc.**

(a) Active Status Counts

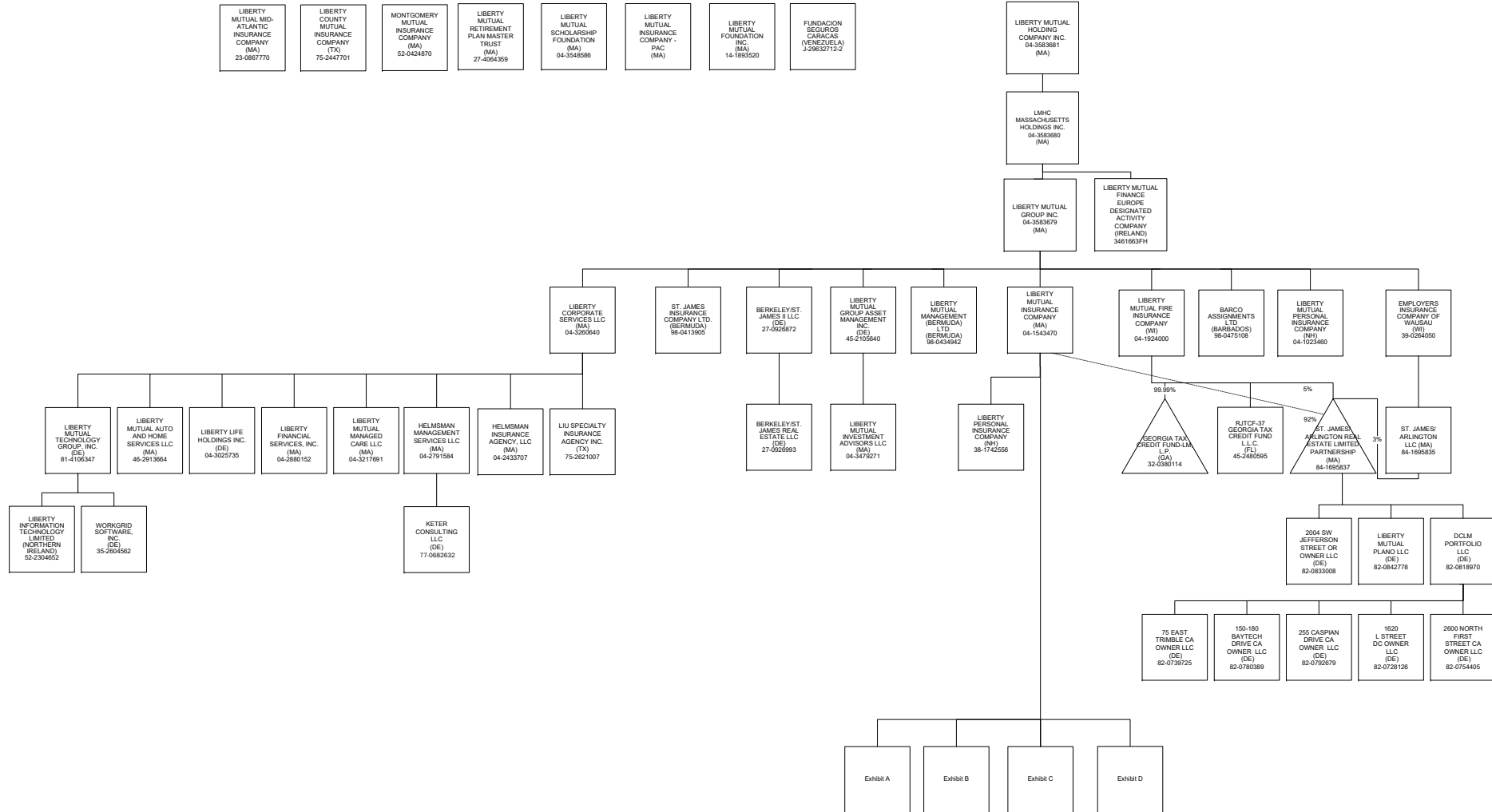
L - Licensed or Chartered - Licensed insurance carrier or domiciled RRG	36
E - Eligible - Reporting entities eligible or approved to write surplus lines in the state	_____
D - Domestic Surplus Lines Insurer (DSLII) - Reporting entities authorized to write surplus lines in the state of domicile	_____
R - Registered - Non-domiciled RRGs	_____
Q - Qualified - Qualified or accredited reinsurer	_____
N - None of the above - Not allowed to write business in the state (other than their state of domicile - See DSLII)	21

**Explanation of basis of allocation of premiums by states, etc.**

*Location of coverage - Fire, Allied Lines, Homeowners Multi Peril, Commercial Multi Peril, Earthquake, Boiler and Machinery	*Location of Court or Obligor - Surety
*States employee's main work place - Worker's Compensation	*Address of Assured - Other Accident and Health
*Location of Principal place of garaging of each individual car - Auto Liability, Auto Physical Damage	*Location of Properties covered - Burglary and Theft
*Principal Location of business or location of coverage - Liability other than Auto, Fidelity, Warranty	*Principal Location of Assured - Ocean Marine, Credit
*Point of origin of shipment or principal location of assured - Inland Marine	*Primary residence of Assured - Aircraft (all perils)
*State in which employees regularly work - Group Accident and Health	

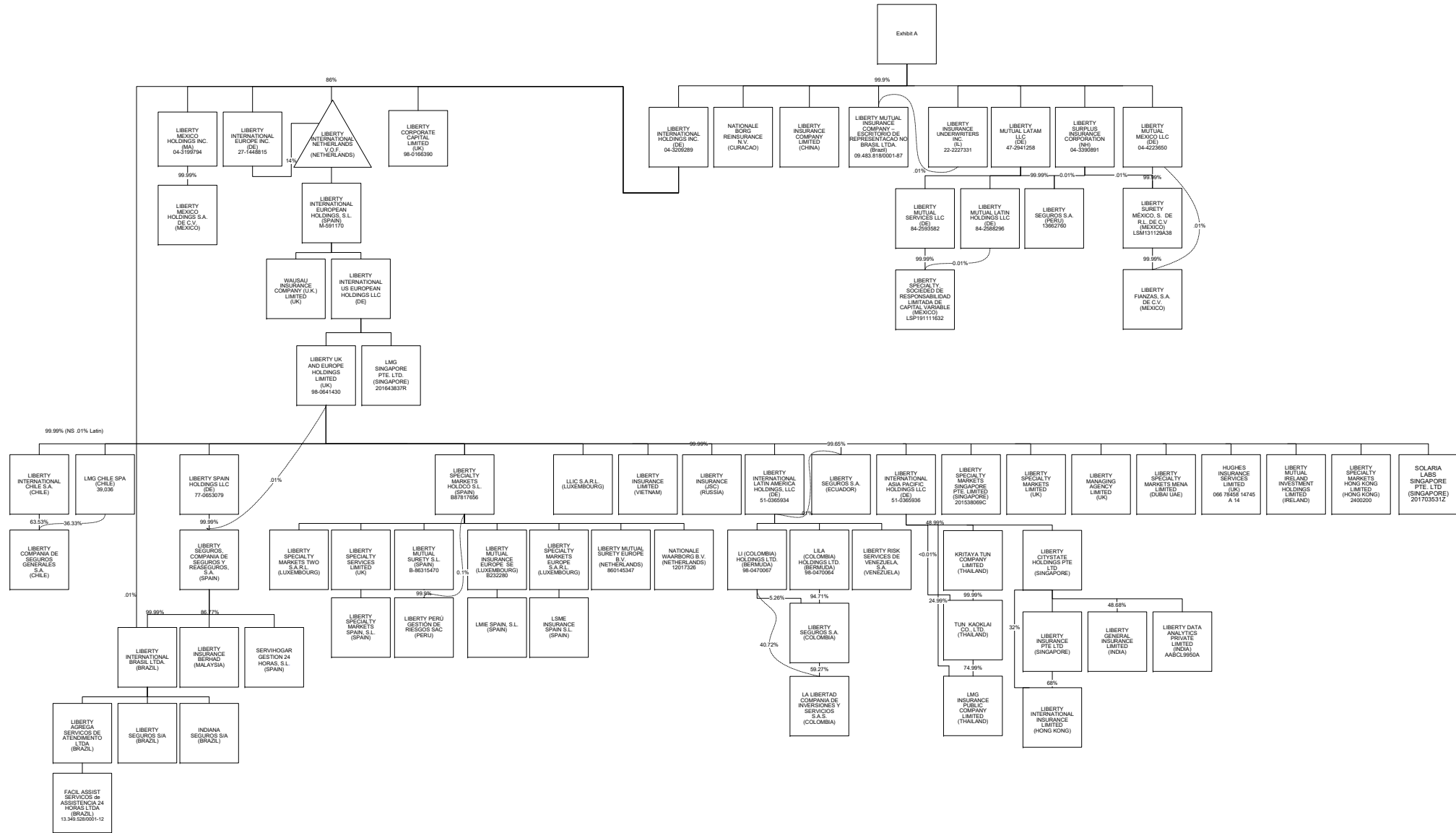
# SCHEDULE Y - INFORMATION CONCERNING ACTIVITIES OF INSURER MEMBERS OF A HOLDING COMPANY GROUP

## PART 1 - ORGANIZATIONAL CHART



# SCHEDULE Y - INFORMATION CONCERNING ACTIVITIES OF INSURER MEMBERS OF A HOLDING COMPANY GROUP

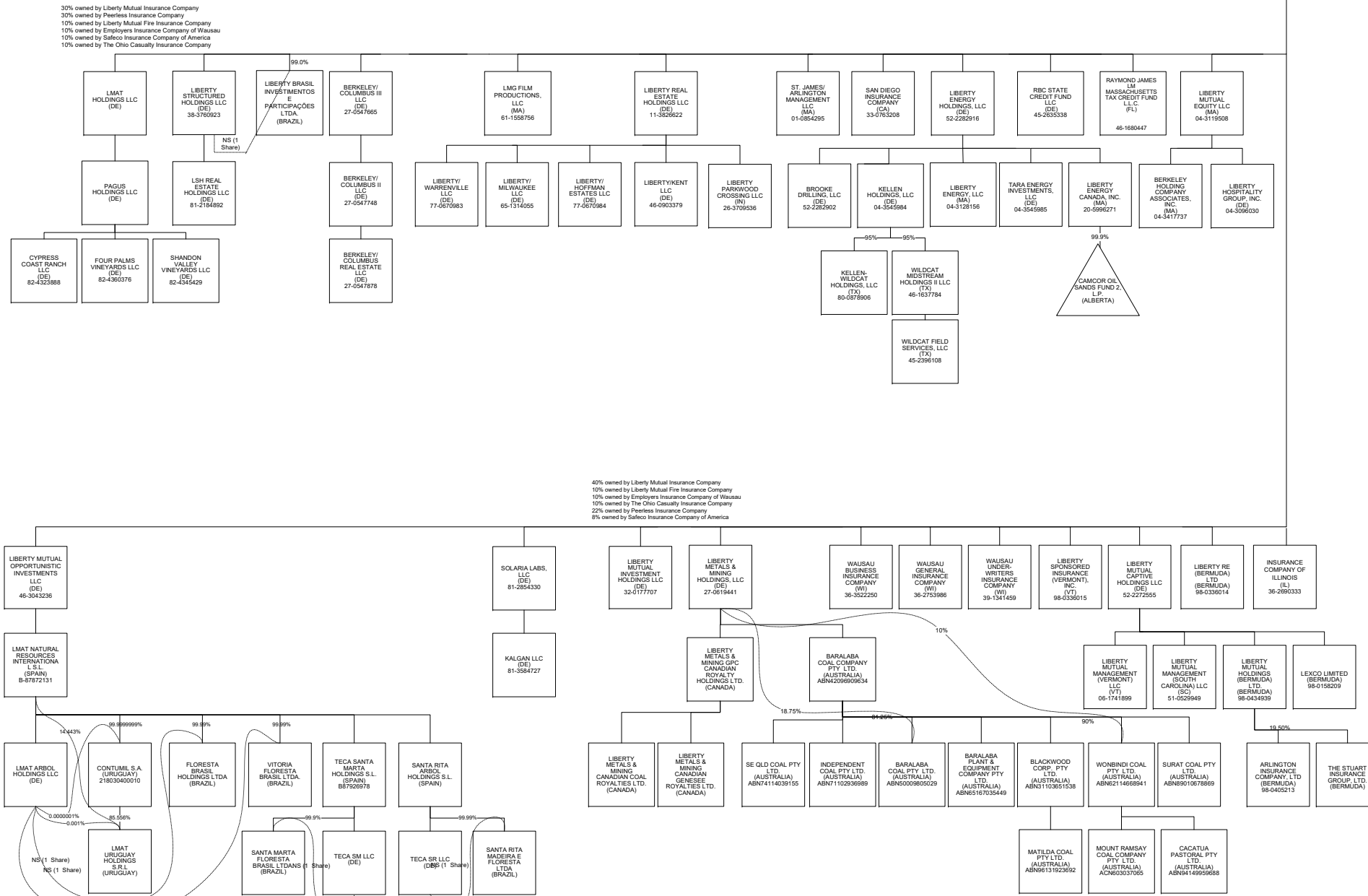
## PART 1 - ORGANIZATIONAL CHART



# SCHEDULE Y - INFORMATION CONCERNING ACTIVITIES OF INSURER MEMBERS OF A HOLDING COMPANY GROUP

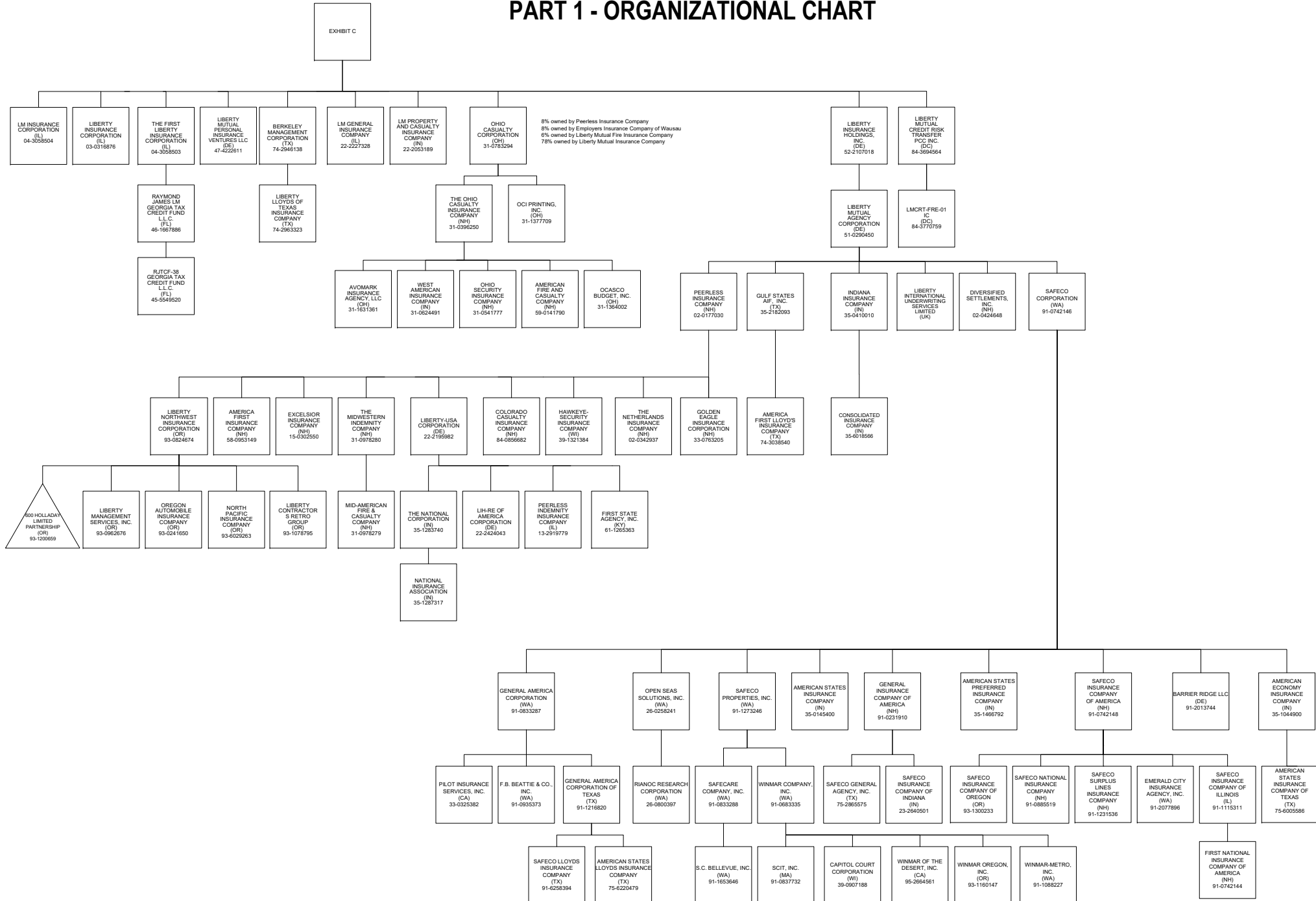
## PART 1 - ORGANIZATIONAL CHART

EXHIBIT B



# SCHEDULE Y - INFORMATION CONCERNING ACTIVITIES OF INSURER MEMBERS OF A HOLDING COMPANY GROUP

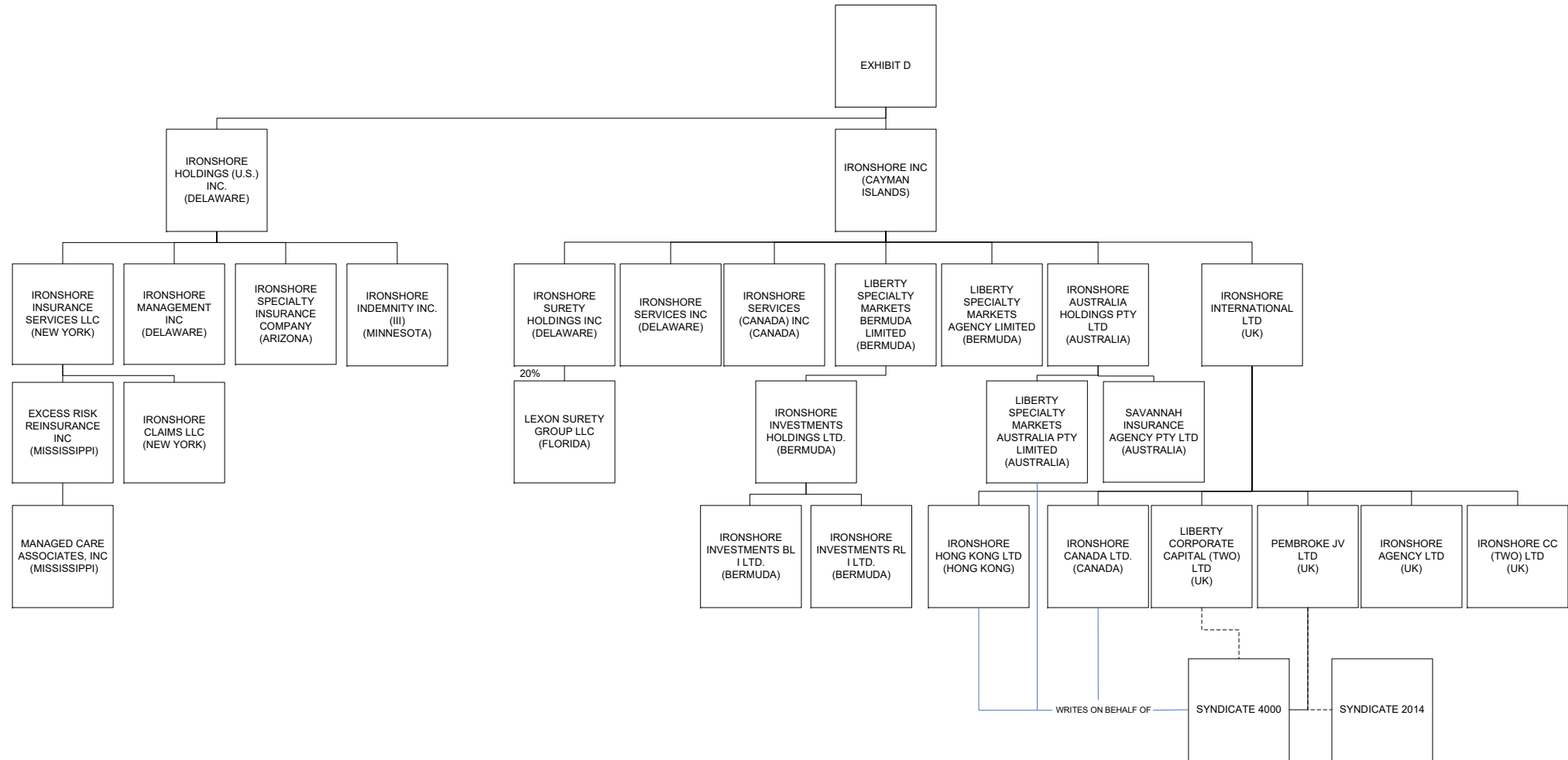
## PART 1 - ORGANIZATIONAL CHART





# SCHEDULE Y - INFORMATION CONCERNING ACTIVITIES OF INSURER MEMBERS OF A HOLDING COMPANY GROUP

## PART 1 - ORGANIZATIONAL CHART



---

**OVERFLOW PAGE FOR WRITE-INS**

---

## ALPHABETICAL INDEX TO PROPERTY ANNUAL STATEMENT

Assets	2	Schedule E – Part 3 – Special Deposits	E29
Cash Flow	5	Schedule F – Part 1	20
Exhibit of Capital Gains (Losses)	12	Schedule F – Part 2	21
Exhibit of Net Investment Income	12	Schedule F – Part 3	22
Exhibit of Nonadmitted Assets	13	Schedule F – Part 4	27
Exhibit of Premiums and Losses (State Page)	19	Schedule F – Part 5	28
Five-Year Historical Data	17	Schedule F – Part 6	29
General Interrogatories	15	Schedule H – Accident and Health Exhibit – Part 1	30
Jurat Page	1	Schedule H – Part 2, Part 3 and Part 4	31
Liabilities, Surplus and Other Funds	3	Schedule H – Part 5 – Health Claims	32
Notes To Financial Statements	14	Schedule P – Part 1 – Summary	33
Overflow Page For Write-ins	100	Schedule P – Part 1A – Homeowners/Farmowners	35
Schedule A – Part 1	E01	Schedule P – Part 1B – Private Passenger Auto Liability/Medical	36
Schedule A – Part 2	E02	Schedule P – Part 1C – Commercial Auto/Truck Liability/Medical	37
Schedule A – Part 3	E03	Schedule P – Part 1D – Workers' Comp (Excluding Excess Workers' Comp)	38
Schedule A – Verification Between Years	SI02	Schedule P – Part 1E – Commercial Multiple Peril	39
Schedule B – Part 1	E04	Schedule P – Part 1F – Section 1 – Medical Professional Liability	
Schedule B – Part 2	E05	– Occurrence	40
Schedule B – Part 3	E06	Schedule P – Part 1F – Section 2 – Medical Professional Liability	
Schedule B – Verification Between Years	SI02	– Claims-Made	41
Schedule BA – Part 1	E07	Schedule P – Part 1G – Special Liability (Ocean, Marine, Aircraft (All	
Schedule BA – Part 2	E08	Perils), Boiler and Machinery)	42
Schedule BA – Part 3	E09	Schedule P – Part 1H – Section 1 – Other Liability – Occurrence	43
Schedule BA – Verification Between Years	SI03	Schedule P – Part 1H – Section 2 – Other Liability – Claims-Made	44
Schedule D – Part 1	E10	Schedule P – Part 1I – Special Property (Fire, Allied Lines, Inland Marine,	
Schedule D – Part 1A – Section 1	SI05	Earthquake, Burglary & Theft)	45
Schedule D – Part 1A – Section 2	SI08	Schedule P – Part 1J – Auto Physical Damage	46
Schedule D – Part 2 – Section 1	E11	Schedule P – Part 1K – Fidelity/Surety	47
Schedule D – Part 2 – Section 2	E12	Schedule P – Part 1L – Other (Including Credit, Accident and Health)	48
Schedule D – Part 3	E13	Schedule P – Part 1M – International	49
Schedule D – Part 4	E14	Schedule P – Part 1N – Reinsurance - Nonproportional Assumed Property	50
Schedule D – Part 5	E15	Schedule P – Part 1O – Reinsurance - Nonproportional Assumed Liability	51
Schedule D – Part 6 – Section 1	E16	Schedule P – Part 1P – Reinsurance - Nonproportional Assumed Financial Lines	52
Schedule D – Part 6 – Section 2	E16	Schedule P – Part 1R – Section 1 – Products Liability – Occurrence	53
Schedule D – Summary By Country	SI04	Schedule P – Part 1R – Section 2 – Products Liability – Claims – Made	54
Schedule D – Verification Between Years	SI03	Schedule P – Part 1S – Financial Guaranty/Mortgage Guaranty	55
Schedule DA – Part 1	E17	Schedule P – Part 1T – Warranty	56
Schedule DA – Verification Between Years	SI10	Schedule P – Part 2, Part 3 and Part 4 - Summary	34
Schedule DB – Part A – Section 1	E18	Schedule P – Part 2A – Homeowners/Farmowners	57
Schedule DB – Part A – Section 2	E19	Schedule P – Part 2B – Private Passenger Auto Liability/Medical	57
Schedule DB – Part A – Verification Between Years	SI11	Schedule P – Part 2C – Commercial Auto/Truck Liability/Medical	57
Schedule DB – Part B – Section 1	E20	Schedule P – Part 2D – Workers' Comp (Excluding Excess Workers' Comp)	57
Schedule DB – Part B – Section 2	E21	Schedule P – Part 2E – Commercial Multiple Peril	57
Schedule DB – Part B – Verification Between Years	SI11	Schedule P – Part 2F – Section 1 – Medical Professional Liability	
Schedule DB – Part C – Section 1	SI12	– Occurrence	58
Schedule DB – Part C – Section 2	SI13	Schedule P - Part 2F - Medical Professional Liability - Claims - Made	58
Schedule DB - Part D - Section 1	E22	Schedule P – Part 2G – Special Liability (Ocean Marine, Aircraft (All Perils),	
Schedule DB - Part D - Section 2	E23	Boiler and Machinery)	58
Schedule DB - Verification	SI14	Schedule P – Part 4I – Special Property (Fire, Allied Lines, Inland Marine,	
Schedule DB - Part E	E24	Earthquake, Burglary and Theft)	69
Schedule DL - Part 1	E25	Schedule P – Part 4J – Auto Physical Damage	69
Schedule DL - Part 2	E26	Schedule P – Part 4K – Fidelity/Surety	69
Schedule E – Part 1 – Cash	E27	Schedule P – Part 4L – Other (Including Credit, Accident and Health)	69
Schedule E – Part 2 – Cash Equivalents	E28	Schedule P – Part 4M – International	69

## ALPHABETICAL INDEX TO PROPERTY ANNUAL STATEMENT

Schedule P – Part 2H – Section 1 – Other Liability – Occurrence	58	Schedule P – Part 4O – Reinsurance - Nonproportional Assumed Liability	70
Schedule P – Part 2H – Section 2 – Other Liability – Claims – Made	58	Schedule P – Part 4P – Reinsurance - Nonproportional Assumed Financial Lines	70
Schedule P – Part 2I – Special Property (Fire, Allied Lines, Inland Marine, Earthquake, Burglary, and Theft)	59	Schedule P – Part 4R – Section 1 – Products Liability – Occurrence	71
Schedule P – Part 2J – Auto Physical Damage	59	Schedule P – Part 4R – Section 2 – Products Liability – Claims-Made	71
Schedule P – Part 2K – Fidelity, Surety	59	Schedule P – Part 4S – Financial Guaranty/Mortgage Guaranty	71
Schedule P – Part 2L – Other (Including Credit, Accident and Health)	59	Schedule P – Part 4T – Warranty	71
Schedule P – Part 2M – International	59	Schedule P – Part 5A – Homeowners/Farmowners	72
Schedule P – Part 2N – Reinsurance - Nonproportional Assumed Property	60	Schedule P – Part 5B – Private Passenger Auto Liability/Medical	73
Schedule P – Part 2O – Reinsurance - Nonproportional Assumed Liability	60	Schedule P – Part 5C – Commercial Auto/Truck Liability/Medical	74
Schedule P – Part 2P – Reinsurance - Nonproportional Assumed Financial Lines	60	Schedule P – Part 5D – Workers' Comp (Excluding Excess Workers' Comp)	75
Schedule P – Part 2R – Section 1 – Products Liability – Occurrence	61	Schedule P – Part 5E – Commercial Multiple Peril	76
Schedule P – Part 2R – Section 2 – Products Liability – Claims-Made	61	Schedule P – Part 5F – Medical Professional Liability – Claims-Made	78
Schedule P – Part 2S – Financial Guaranty/Mortgage Guaranty	61	Schedule P – Part 5F – Medical Professional Liability – Occurrence	77
Schedule P – Part 2T – Warranty	61	Schedule P – Part 5H – Other Liability – Claims-Made	80
Schedule P – Part 3A – Homeowners/Farmowners	62	Schedule P – Part 5H – Other Liability – Occurrence	79
Schedule P – Part 3B – Private Passenger Auto Liability/Medical	62	Schedule P – Part 5R – Products Liability – Claims-Made	82
Schedule P – Part 3C – Commercial Auto/Truck Liability/Medical	62	Schedule P – Part 5R – Products Liability – Occurrence	81
Schedule P – Part 3D – Workers' Comp (Excluding Excess Workers' Comp)	62	Schedule P – Part 5T – Warranty	83
Schedule P – Part 3E – Commercial Multiple Peril	62	Schedule P – Part 6C – Commercial Auto/Truck Liability/Medical	84
Schedule P – Part 3F – Section 1 – Medical Professional Liability – Occurrence	63	Schedule P – Part 6D – Workers' Comp (Excluding Excess Workers' Comp)	84
Schedule P – Part 3F – Section 2 – Medical Professional Liability – Claims-Made	63	Schedule P – Part 6E – Commercial Multiple Peril	85
Schedule P – Part 3G – Special Liability (Ocean Marine, Aircraft (All Perils), Boiler and Machinery)	63	Schedule P – Part 6H – Other Liability – Claims-Made	86
Schedule P – Part 3H – Section 1 – Other Liability – Occurrence	63	Schedule P – Part 6H – Other Liability – Occurrence	85
Schedule P – Part 3H – Section 2 – Other Liability – Claims-Made	63	Schedule P – Part 6M – International	86
Schedule P – Part 3I – Special Property (Fire, Allied Lines, Inland Marine, Earthquake, Burglary, and Theft)	64	Schedule P – Part 6N – Reinsurance - Nonproportional Assumed Property	87
Schedule P – Part 3J – Auto Physical Damage	64	Schedule P – Part 6O – Reinsurance - Nonproportional Assumed Liability	87
Schedule P – Part 3K – Fidelity/Surety	64	Schedule P – Part 6R – Products Liability – Claims-Made	88
Schedule P – Part 3L – Other (Including Credit, Accident and Health)	64	Schedule P – Part 6R – Products Liability – Occurrence	88
Schedule P – Part 3M – International	64	Schedule P – Part 7A – Primary Loss Sensitive Contracts	89
Schedule P – Part 3N – Reinsurance - Nonproportional Assumed Property	65	Schedule P – Part 7B – Reinsurance Loss Sensitive Contracts	91
Schedule P – Part 3O – Reinsurance - Nonproportional Assumed Liability	65	Schedule P Interrogatories	93
Schedule P – Part 3P – Reinsurance - Nonproportional Assumed Financial Lines	65	Schedule T – Exhibit of Premiums Written	94
Schedule P – Part 3R – Section 1 – Products Liability – Occurrence	66	Schedule T – Part 2 – Interstate Compact	95
Schedule P – Part 3R – Section 2 – Products Liability – Claims-Made	66	Schedule Y – Information Concerning Activities of Insurer Members of a Holding Company Group	96
Schedule P – Part 3S – Financial Guaranty/Mortgage Guaranty	66	Schedule Y - Part 1A - Detail of Insurance Holding Company System	97
Schedule P – Part 3T – Warranty	66	Schedule Y – Part 2 – Summary of Insurer's Transactions With Any Affiliates	98
Schedule P – Part 4A – Homeowners/Farmowners	67	Statement of Income	4
Schedule P – Part 4B – Private Passenger Auto Liability/Medical	67	Summary Investment Schedule	SI01
Schedule P – Part 4C – Commercial Auto/Truck Liability/Medical	67	Supplemental Exhibits and Schedules Interrogatories	99
Schedule P – Part 4D – Workers' Comp (Excluding Excess Workers' Comp)	67	Underwriting and Investment Exhibit Part 1	6
Schedule P – Part 4E – Commercial Multiple Peril	67	Underwriting and Investment Exhibit Part 1A	7
Schedule P – Part 4F – Section 1 – Medical Professional Liability – Occurrence	68	Underwriting and Investment Exhibit Part 1B	8
Schedule P – Part 4F – Section 2 – Medical Professional Liability – Claims-Made	68	Underwriting and Investment Exhibit Part 2	9
Schedule P – Part 4G – Special Liability (Ocean Marine, Aircraft (All Perils), Boiler and Machinery)	68	Underwriting and Investment Exhibit Part 2A	10
Schedule P – Part 4H – Section 1 – Other Liability – Occurrence	68	Underwriting and Investment Exhibit Part 3	11
Schedule P – Part 4H – Section 2 – Other Liability – Claims-Made	68		