

ANNUAL STATEMENT

OF THE

LM General Insurance Company

of **Wilmington**

in the state of **Delaware**

TO THE

Insurance Department

OF THE

STATE OF

**FOR THE YEAR ENDED
December 31, 2007**

PROPERTY AND CASUALTY

2007



36447200720100100

ANNUAL STATEMENT
For the Year Ended December 31, 2007
 OF THE CONDITION AND AFFAIRS OF THE
LM General Insurance Company

NAIC Group Code 0111 0111 **NAIC Company Code** 36447 **Employer's ID Number** 22-2227328
(Current Period) (Prior Period)

Organized under the Laws of Delaware, **State of Domicile or Port of Entry** Delaware

Country of Domicile United States of America

Incorporated/Organized: November 17, 1978 **Commenced Business:** December 29, 1978

Statutory Home Office: 2711 Centerville Road Suite 400 Wilmington, DE 19808
(Street and Number) (City, State and Zip Code)

Main Administrative Office: 175 Berkeley Street Boston, MA 02116 617-357-9500
(Street and Number) (City, State and Zip Code) (Area Code)(Telephone Number)

Mail Address: 175 Berkeley Street Boston, MA 02116
(Street and Number) (City, State and Zip Code)

Primary Location of Books and Records: 175 Berkeley Street Boston, MA 02116 617-357-9500
(Street and Number) (City, State and Zip Code) (Area Code)(Telephone Number)

Internet Website Address: www.LibertyMutual.com

Statutory Statement Contact: Joanne Connolly 617-357-9500 44393
(Name) (Area Code)(Telephone Number)(Extension)
Joanne.Connolly@LibertyMutual.com 617-574-5955
(E-Mail Address) (Fax Number)

OFFICERS

	Name		Title
1.	<u>James Paul Condrin, III</u>		<u>Chairman of the Board President & CEO</u>
2.	<u>Dexter Robert Legg</u>		<u>Vice President & Secretary</u>
3.	<u>Laurance Henry Soyer Yahia</u>		<u>Vice President & Treasurer</u>

Vice-Presidents

Name	Title	Name	Title
<u>Margaret Dillon</u>	<u>Vice President & Chief Financial Officer</u>	<u>John Derek Doyle</u>	<u>Vice President & Comptroller</u>
<u>Anthony Alexander Fontanes</u>	<u>Vice President & Assistant Treasurer</u>	<u>Gary Jay Ostrow</u>	<u>Vice President</u>
<u>Himanshu Indravadan Patel</u>	<u>Vice President</u>	<u>Timothy Michael Sweeney</u>	<u>Vice President</u>
<u>Edward Joseph Gramer, III</u>	<u>Vice President</u>	<u>Elizabeth Julia Morahan</u>	<u>Vice President & General Counsel</u>
_____	_____	_____	_____
_____	_____	_____	_____
_____	_____	_____	_____
_____	_____	_____	_____

DIRECTORS OR TRUSTEES

<u>James Paul Condrin, III</u>	<u>Margaret Dillon</u>	<u>Himanshu Indravadan Patel</u>	<u>Timothy Michael Sweeney</u>
<u>Edward Joseph Gramer, III</u>	<u>Elizabeth Julia Morahan</u>	_____	_____
_____	_____	_____	_____
_____	_____	_____	_____
_____	_____	_____	_____
_____	_____	_____	_____
_____	_____	_____	_____
_____	_____	_____	_____

State of Massachusetts
 County of Suffolk ss

The officers of this reporting entity being duly sworn, each depose and say that they are the described officers of said reporting entity, and that on the reporting period stated above, all of the herein described assets were the absolute property of the said reporting entity, free and clear from any liens or claims thereon, except as herein stated, and that this statement, together with related exhibits, schedules and explanations therein contained, annexed or referred to, is a full and true statement of all the assets and liabilities and of the condition and affairs of the said reporting entity as of the reporting period stated above, and of its income and deductions therefrom for the period ended, and have been completed in accordance with the NAIC Annual Statement Instructions and Accounting Practices and Procedures manual except to the extent that: (1) state law may differ; or, (2) that state rules or regulations require differences in reporting not related to accounting practices and procedures, according to the best of their information, knowledge and belief, respectively. Furthermore, the scope of this attestation by the described officers also includes the related corresponding electronic filing with the NAIC, when required, that is an exact copy (except for formatting differences due to electronic filing) of the enclosed statement. The electronic filing may be requested by various regulators in lieu of or in addition to the enclosed statement.

_____ (Signature) <u>James Paul Condrin, III</u> (Printed Name) 1. Chairman of the Board President & CEO (Title)	_____ (Signature) <u>Dexter Robert Legg</u> (Printed Name) 2. Vice President & Secretary (Title)	_____ (Signature) <u>Laurance Henry Soyer Yahia</u> (Printed Name) 3. Vice President & Treasurer (Title)
--	--	--

Subscribed and sworn to before me this
22nd day of January, 2008

a. Is this an original filing? YES [X] NO []
 b. If no: 1. State the amendment number _____
 2. Date filed _____
 3. Number of pages attached _____

ASSETS

	Current Year			Prior Year
	1	2	3	4
	Assets	Nonadmitted Assets	Net Admitted Assets (Cols. 1 - 2)	Net Admitted Assets
1. Bonds (Schedule D)	7,405,364		7,405,364	9,195,093
2. Stocks (Schedule D):				
2.1 Preferred stocks				
2.2 Common stocks				
3. Mortgage loans on real estate (Schedule B):				
3.1 First liens				
3.2 Other than first liens				
4. Real estate (Schedule A):				
4.1 Properties occupied by the company (less \$ 0 encumbrances)				
4.2 Properties held for the production of income (less \$ 0 encumbrances)				
4.3 Properties held for sale (less \$ 0 encumbrances)				
5. Cash (\$ 258,080, Schedule E-Part 1), cash equivalents (\$ 671,197, Schedule E-Part 2) and short-term investments (\$ 798,528, Schedule DA)	1,727,805		1,727,805	4,163,349
6. Contract loans (including \$ 0 premium notes)				
7. Other invested assets (Schedule BA)				
8. Receivables for securities				
9. Aggregate write-ins for invested assets				
10. Subtotals, cash and invested assets (Lines 1 to 9)	9,133,169		9,133,169	13,358,442
11. Title plants less \$ 0 charged off (for Title insurers only)				
12. Investment income due and accrued	70,124		70,124	75,647
13. Premiums and considerations:				
13.1 Uncollected premiums and agents' balances in the course of collection				
13.2 Deferred premiums, agents' balances and installments booked but deferred and not yet due (including \$ 0 earned but unbilled premiums)				
13.3 Accrued retrospective premiums				
14. Reinsurance:				
14.1 Amounts recoverable from reinsurers	713,716		713,716	2,069,077
14.2 Funds held by or deposited with reinsured companies				
14.3 Other amounts receivable under reinsurance contracts				
15. Amounts receivable relating to uninsured plans				
16.1 Current federal and foreign income tax recoverable and interest thereon				
16.2 Net deferred tax asset				350
17. Guaranty funds receivable or on deposit				
18. Electronic data processing equipment and software				
19. Furniture and equipment, including health care delivery assets (\$ 0)				
20. Net adjustment in assets and liabilities due to foreign exchange rates				
21. Receivables from parent, subsidiaries and affiliates				
22. Health care (\$ 0) and other amounts receivable				
23. Aggregate write-ins for other than invested assets				5,337
24. Total assets excluding Separate Accounts, Segregated Accounts and Protected Cell Accounts (Lines 10 to 23)	9,917,009		9,917,009	15,508,853
25. From Separate Accounts, Segregated Accounts and Protected Cell Accounts				
26. Total (Lines 24 and 25)	9,917,009		9,917,009	15,508,853

DETAILS OF WRITE-INS				
0901.				
0902.				
0903.				
0998. Summary of remaining write-ins for Line 09 from overflow page				
0999. Totals (Lines 0901 through 0903 plus 0998) (Line 09 above)				
2301. Other assets				5,337
2302.				
2303.				
2398. Summary of remaining write-ins for Line 23 from overflow page				
2399. Totals (Lines 2301 through 2303 plus 2398) (Line 23 above)				5,337

LIABILITIES, SURPLUS AND OTHER FUNDS	1 Current Year	2 Prior Year
1. Losses (Part 2A, Line 34, Column 8)	754,636	754,868
2. Reinsurance payable on paid losses and loss adjustment expenses (Schedule F, Part 1, Column 6)		
3. Loss adjustment expenses (Part 2A, Line 34, Column 9)		10,000
4. Commissions payable, contingent commissions and other similar charges		
5. Other expenses (excluding taxes, licenses and fees)		
6. Taxes, licenses and fees (excluding federal and foreign income taxes)		
7.1 Current federal and foreign income taxes (including \$ 0 on realized capital gains (losses))	67,614	134,308
7.2 Net deferred tax liability	25,999	
8. Borrowed money \$ 0 and interest thereon \$ 0		
9. Unearned premiums (Part 1A, Line 37, Column 5) (after deducting unearned premiums for ceded reinsurance of \$ 0 and including warranty reserves of \$ 0)		
10. Advance premium		
11. Dividends declared and unpaid:		
11.1 Stockholders		
11.2 Policyholders		
12. Ceded reinsurance premiums payable (net of ceding commissions)	2,590	(2,350)
13. Funds held by company under reinsurance treaties (Schedule F, Part 3, Column 19)	512,300	654,103
14. Amounts withheld or retained by company for account of others		
15. Remittances and items not allocated		
16. Provision for reinsurance (Schedule F, Part 7)		
17. Net adjustments in assets and liabilities due to foreign exchange rates		
18. Drafts outstanding		
19. Payable to parent, subsidiaries and affiliates	709,629	4,315,591
20. Payable for securities		
21. Liability for amounts held under uninsured plans		
22. Capital notes \$ 0 and interest thereon \$ 0		
23. Aggregate write-ins for liabilities	1,096,423	4,240,983
24. Total liabilities excluding protected cell liabilities (Lines 1 through 23)	3,169,191	10,107,503
25. Protected cell liabilities		
26. Total liabilities (Lines 24 and 25)	3,169,191	10,107,503
27. Aggregate write-ins for special surplus funds		
28. Common capital stock	3,500,000	3,500,000
29. Preferred capital stock		
30. Aggregate write-ins for other than special surplus funds		
31. Surplus notes		
32. Gross paid in and contributed surplus	3,211,632	2,011,632
33. Unassigned funds (surplus)	36,186	(110,282)
34. Less treasury stock, at cost:		
34.1 0 shares common (value included in Line 28 \$ 0)		
34.2 0 shares preferred (value included in Line 29 \$ 0)		
35. Surplus as regards policyholders (Lines 27 to 33, less 34) (Page 4, Line 39)	6,747,818	5,401,350
36. TOTALS (Page 2, Line 26, Col. 3)	9,917,009	15,508,853

DETAILS OF WRITE-INS		
2301. Other liabilities	91,888	143,561
2302. Collateral held for securities loaned	1,004,535	4,097,422
2303.		
2398. Summary of remaining write-ins for Line 23 from overflow page		
2399. Totals (Lines 2301 through 2303 plus 2398) (Line 23 above)	1,096,423	4,240,983
2701.		
2702.		
2703.		
2798. Summary of remaining write-ins for Line 27 from overflow page		
2799. Totals (Lines 2701 through 2703 plus 2798) (Line 27 above)		
3001.		
3002.		
3003.		
3098. Summary of remaining write-ins for Line 30 from overflow page		
3099. Totals (Lines 3001 through 3003 plus 3098) (Line 30 above)		

STATEMENT OF INCOME	1	2
	Current Year	Prior Year
UNDERWRITING INCOME		
1. Premiums earned (Part 1, Line 34, Column 4)		
DEDUCTIONS		
2. Losses incurred (Part 2, Line 34, Column 7)		(1,222)
3. Loss expenses incurred (Part 3, Line 25, Column 1)	(9,471)	10,027
4. Other underwriting expenses incurred (Part 3, Line 25, Column 2)		
5. Aggregate write-ins for underwriting deductions		
6. Total underwriting deductions (Lines 2 through 5)	(9,471)	8,805
7. Net income of protected cells		
8. Net underwriting gain (loss) (Line 1 minus Line 6 plus Line 7)	9,471	(8,805)
INVESTMENT INCOME		
9. Net investment income earned (Exhibit of Net Investment Income, Line 17)	381,177	692,703
10. Net realized capital gains (losses) less capital gains tax of \$ (3,165) (Exhibit of Capital Gains (Losses))	(5,878)	(89,193)
11. Net investment gain (loss) (Lines 9 + 10)	375,299	603,510
OTHER INCOME		
12. Net gain (loss) from agents' or premium balances charged off (amount recovered \$ 0 amount charged off \$ 0)		
13. Finance and service charges not included in premiums		
14. Aggregate write-ins for miscellaneous income	(3,048)	
15. Total other income (Lines 12 through 14)	(3,048)	
16. Net income before dividends to policyholders, after capital gains tax and before all other federal and foreign income taxes (Lines 8 + 11 + 15)	381,722	594,705
17. Dividends to policyholders		
18. Net income, after dividends to policyholders, after capital gains tax and before all other federal and foreign income taxes (Line 16 minus Line 17)	381,722	594,705
19. Federal and foreign income taxes incurred	208,905	193,578
20. Net income (Line 18 minus Line 19) (to Line 22)	172,817	401,127
CAPITAL AND SURPLUS ACCOUNT		
21. Surplus as regards policyholders, December 31 prior year (Page 4, Line 39, Column 2)	5,401,350	14,825,873
22. Net income (from Line 20)	172,817	401,127
23. Net transfers (to) from Protected Cell accounts		
24. Change in net unrealized capital gains or (losses) less capital gains tax of \$ 0		
25. Change in net unrealized foreign exchange capital gain (loss)		
26. Change in net deferred income tax	(29,000)	(38,000)
27. Change in nonadmitted assets (Exhibit of Nonadmitted Assets, Line 26, Col. 3)	2,651	38,350
28. Change in provision for reinsurance (Page 3, Line 16, Column 2 minus Column 1)		
29. Change in surplus notes		
30. Surplus (contributed to) withdrawn from protected cells		
31. Cumulative effect of changes in accounting principles		
32. Capital changes:		
32.1 Paid in		
32.2 Transferred from surplus (Stock Dividend)		
32.3 Transferred to surplus		
33. Surplus adjustments:		
33.1 Paid in	1,200,000	(2,488,368)
33.2 Transferred to capital (Stock Dividend)		
33.3 Transferred from capital		
34. Net remittances from or (to) Home Office		
35. Dividends to stockholders		(7,337,632)
36. Change in treasury stock (Page 3, Lines 34.1 and 34.2, Column 2 minus Column 1)		
37. Aggregate write-ins for gains and losses in surplus		
38. Change in surplus as regards policyholders for the year (Lines 22 through 37)	1,346,468	(9,424,523)
39. Surplus as regards policyholders, December 31 current year (Line 21 plus Line 38) (Page 3, Line 35)	6,747,818	5,401,350

DETAILS OF WRITE-INS		
0501.		
0502.		
0503.		
0598. Summary of remaining write-ins for Line 5 from overflow page		
0599. Totals (Lines 0501 through 0503 plus Line 0598) (Line 5 above)		
1401. Other income /(expense)	(3,048)	
1402.		
1403.		
1498. Summary of remaining write-ins for Line 14 from overflow page		
1499. Totals (Lines 1401 through 1403 plus Line 1498) (Line 14 above)	(3,048)	
3701.		
3702.		
3703.		
3798. Summary of remaining write-ins for Line 37 from overflow page		
3799. Totals (Lines 3701 through 3703 plus Line 3798) (Line 37 above)		

CASH FLOW

	1	2
Cash from Operations	Current Year	Prior Year
1. Premiums collected net of reinsurance	4,939	(27,906)
2. Net investment income	376,760	717,559
3. Miscellaneous income	(144,851)	(2,011,133)
4. Total (Lines 1 through 3)	236,848	(1,321,480)
5. Benefit and loss related payments	(1,355,128)	1,671,189
6. Net transfers to Separate Accounts, Segregated Accounts and Protected Cell Accounts		
7. Commissions, expenses paid and aggregate write-ins for deductions	529	27
8. Dividends paid to policyholders		
9. Federal and foreign income taxes paid (recovered) net of \$ 0 tax on capital gains (losses)	272,434	(262,852)
10. Total (Lines 5 through 9)	(1,082,165)	1,408,364
11. Net cash from operations (Line 4 minus Line 10)	1,319,013	(2,729,844)
Cash from Investments		
12. Proceeds from investments sold, matured or repaid:		
12.1 Bonds	1,790,625	8,080,559
12.2 Stocks		
12.3 Mortgage loans		
12.4 Real estate		
12.5 Other invested assets		
12.6 Net gains or (losses) on cash, cash equivalents and short-term investments		(995)
12.7 Miscellaneous proceeds		
12.8 Total investment proceeds (Lines 12.1 to 12.7)	1,790,625	8,079,564
13. Cost of investments acquired (long-term only):		
13.1 Bonds		2,025,477
13.2 Stocks		
13.3 Mortgage loans		
13.4 Real estate		
13.5 Other invested assets		
13.6 Miscellaneous applications		
13.7 Total investments acquired (Lines 13.1 to 13.6)		2,025,477
14. Net increase (decrease) in contract loans and premium notes		
15. Net cash from investments (Line 12.8 minus Line 13.7 minus Line 14)	1,790,625	6,054,087
Cash from Financing and Miscellaneous Sources		
16. Cash provided (applied):		
16.1 Surplus notes, capital notes		
16.2 Capital and paid in surplus, less treasury stock	1,200,000	(2,488,368)
16.3 Borrowed funds		
16.4 Net deposits on deposit-type contracts and other insurance liabilities		
16.5 Dividends to stockholders		7,337,632
16.6 Other cash provided (applied)	(6,745,182)	6,594,419
17. Net cash from financing and miscellaneous sources (Lines 16.1 to 16.4 minus Line 16.5 plus Line 16.6)	(5,545,182)	(3,231,581)
RECONCILIATION OF CASH, CASH EQUIVALENTS AND SHORT-TERM INVESTMENTS		
18. Net change in cash, cash equivalents and short-term investments (Line 11, plus Lines 15 and 17)	(2,435,544)	92,662
19. Cash, cash equivalents and short-term investments:		
19.1 Beginning of year	4,163,349	4,070,687
19.2 End of year (Line 18 plus Line 19.1)	1,727,805	4,163,349

Note: Supplemental disclosures of cash flow information for non-cash transactions:

20.0001.		
20.0002.		
20.0003.		

NONE **Underwriting and Investment Exhibit - Part 1**

NONE **Underwriting and Investment Exhibit - Part 1A**

UNDERWRITING AND INVESTMENT EXHIBIT
PART 1B - PREMIUMS WRITTEN

Line of Business	1 Direct Business (a)	Reinsurance Assumed		Reinsurance Ceded		6 Net Premiums Written Cols. 1 + 2 + 3 - 4 - 5
		2 From Affiliates	3 From Non- Affiliates	4 To Affiliates	5 To Non- Affiliates	
1. Fire						
2. Allied lines						
3. Farmowners multiple peril						
4. Homeowners multiple peril						
5. Commercial multiple peril						
6. Mortgage guaranty						
8. Ocean marine						
9. Inland marine						
10. Financial guaranty						
11.1 Medical malpractice - occurrence						
11.2 Medical malpractice - claims-made						
12. Earthquake						
13. Group accident and health						
14. Credit accident and health (group and individual)						
15. Other accident and health						
16. Workers' compensation						
17.1 Other liability - occurrence						
17.2 Other liability - claims-made						
18.1 Products liability - occurrence						
18.2 Products liability - claims-made						
19.1, 19.2 Private passenger auto liability	(400)			(400)		
19.3, 19.4 Commercial auto liability						
21. Auto physical damage	(598)			(598)		
22. Aircraft (all perils)						
23. Fidelity						
24. Surety						
26. Burglary and theft						
27. Boiler and machinery						
28. Credit						
29. International						
30. Reinsurance-Nonproportional Assumed Property	X X X					
31. Reinsurance-Nonproportional Assumed Liability	X X X					
32. Reinsurance-Nonproportional Assumed Financial Lines	X X X					
33. Aggregate write-ins for other lines of business						
34. TOTALS	(998)			(998)		

DETAILS OF WRITE-INS						
3301.						
3302.						
3303.						
3398. Summary of remaining write-ins for Line 33 from overflow page						
3399. Totals (Lines 3301 through 3303 plus 3398) (Line 33 above)						

(a) Does the company's direct premiums written include premiums recorded on an installment basis? Yes [] No [X]
 If yes: 1. The amount of such installment premiums \$ 0
 2. Amount at which such installment premiums would have been reported had they been recorded on an annualized basis \$ 0

**UNDERWRITING AND INVESTMENT EXHIBIT
PART 2A - UNPAID LOSSES AND LOSS ADJUSTMENT EXPENSES**

Line of Business	Reported Losses				Incurred But Not Reported			8 Net Losses Unpaid (Cols. 4 + 5 + 6 - 7)	9 Unpaid Loss Adjustment Expenses
	1 Direct	2 Reinsurance Assumed	3 Deduct Reinsurance Recoverable from Authorized and Unauthorized Companies	4 Net Losses Excl. Incurred But Not Reported (Cols. 1 + 2 - 3)	5 Direct	6 Reinsurance Assumed	7 Reinsurance Ceded		
1. Fire									
2. Allied lines									
3. Farmowners multiple peril									
4. Homeowners multiple peril									
5. Commercial multiple peril									
6. Mortgage guaranty									
8. Ocean marine									
9. Inland marine									
10. Financial guaranty									
11.1 Medical malpractice - occurrence									
11.2 Medical malpractice - claims - made									
12. Earthquake									
13. Group accident and health								(a)	
14. Credit accident and health (group and individual)								(a)	
15. Other accident and health									
16. Workers' compensation									
17.1 Other liability - occurrence									
17.2 Other liability - claims - made									
18.1 Products liability - occurrence									
18.2 Products liability - claims - made									
19.1, 19.2 Private passenger auto liability	7,888,793		7,134,157	754,636	432,251		432,251	754,636	
19.3, 19.4 Commercial auto liability									
21. Auto physical damage					(6)		(6)		
22. Aircraft (all perils)									
23. Fidelity									
24. Surety									
26. Burglary and theft									
27. Boiler and machinery									
28. Credit									
29. International									
30. Reinsurance-Nonproportional Assumed Property	XXX				XXX				
31. Reinsurance-Nonproportional Assumed Liability	XXX				XXX				
32. Reinsurance-Nonproportional Assumed Financial Lines	XXX				XXX				
33. Aggregate write-ins for other lines of business									
34. TOTALS	7,888,793		7,134,157	754,636	435,475		435,475	754,636	

DETAILS OF WRITE-INS									
3301.									
3302.									
3303.									
3398. Summary of remaining write-ins for Line 33 from overflow page									
3399. Totals (Lines 3301 through 3303 + 3398) (Line 33 above)									

(a) Including \$ 0 for present value of life indemnity claims.

**UNDERWRITING AND INVESTMENT EXHIBIT
PART 3 - EXPENSES**

	1 Loss Adjustment Expenses	2 Other Underwriting Expenses	3 Investment Expenses	4 Total
1. Claim adjustment services:				
1.1 Direct	605,210			605,210
1.2 Reinsurance assumed				
1.3 Reinsurance ceded	604,681			604,681
1.4 Net claim adjustment service (1.1 + 1.2 - 1.3)	529			529
2. Commission and brokerage:				
2.1 Direct, excluding contingent		(2,971)		(2,971)
2.2 Reinsurance assumed, excluding contingent				
2.3 Reinsurance ceded, excluding contingent		(2,971)		(2,971)
2.4 Contingent-direct		10		10
2.5 Contingent-reinsurance assumed				
2.6 Contingent-reinsurance ceded		10		10
2.7 Policy and membership fees				
2.8 Net commission and brokerage (2.1 + 2.2 - 2.3 + 2.4 + 2.5 - 2.6 + 2.7)				
3. Allowances to manager and agents				
4. Advertising			19	19
5. Boards, bureaus and associations				
6. Surveys and underwriting reports			4	4
7. Audit of assureds' records				
8. Salary and related items:				
8.1 Salaries			2,864	2,864
8.2 Payroll taxes			134	134
9. Employee relations and welfare			175	175
10. Insurance			27	27
11. Directors' fees				
12. Travel and travel items			47	47
13. Rent and rent items			40	40
14. Equipment			51	51
15. Cost or depreciation of EDP equipment and software			15	15
16. Printing and stationery			7	7
17. Postage, telephone and telegraph, exchange and express			14	14
18. Legal and auditing			383	383
19. Totals (Lines 3 to 18)			3,780	3,780
20. Taxes, licenses and fees:				
20.1 State and local insurance taxes deducting guaranty association credits of \$ 0				
20.2 Insurance department licenses and fees				
20.3 Gross guaranty association assessments				
20.4 All other (excluding federal and foreign income and real estate)				
20.5 Total taxes, licenses and fees (20.1 + 20.2 + 20.3 + 20.4)				
21. Real estate expenses				
22. Real estate taxes				
23. Reimbursements by uninsured plans				
24. Aggregate write-ins for miscellaneous expenses	(10,000)		267	(9,733)
25. Total expenses incurred	(9,471)		4,047	(5,424)
26. Less unpaid expenses-current year				
27. Add unpaid expenses-prior year	10,000			10,000
28. Amounts receivable relating to uninsured plans, prior year				
29. Amounts receivable relating to uninsured plans, current year				
30. TOTAL EXPENSES PAID (Lines 25 - 26 + 27 - 28 + 29)	529		4,047	4,576

DETAILS OF WRITE-INS				
2401. Other expenses	(10,000)		267	(9,733)
2402.				
2403.				
2498. Summary of remaining write-ins for Line 24 from overflow page				
2499. Totals (Lines 2401 through 2403 plus 2498) (Line 24 above)	(10,000)		267	(9,733)

(a) Includes management fees of \$ 4,047 to affiliates and \$ 0 to non-affiliates.

EXHIBIT OF NET INVESTMENT INCOME

	1 Collected During Year	2 Earned During Year
1. U.S. Government bonds	(a) 313,525	311,704
1.1 Bonds exempt from U.S. tax	(a)	
1.2 Other bonds (unaffiliated)	(a)	
1.3 Bonds of affiliates	(a)	
2.1 Preferred stocks (unaffiliated)	(b)	
2.11 Preferred stocks of affiliates	(b)	
2.2 Common stocks (unaffiliated)		
2.21 Common stocks of affiliates		
3. Mortgage loans	(c)	
4. Real estate	(d)	
5. Contract loans		
6. Cash, cash equivalents and short-term investments	(e) 30,661	26,959
7. Derivative instruments	(f)	
8. Other invested assets		
9. Aggregate write-ins for investment income	46,561	46,561
10. Total gross investment income	390,747	385,224
11. Investment expenses		(g) 4,047
12. Investment taxes, licenses and fees, excluding federal income taxes		(g)
13. Interest expense		(h)
14. Depreciation on real estate and other invested assets		(i)
15. Aggregate write-ins for deductions from investment income		
16. Total deductions (Lines 11 through 15)		4,047
17. Net investment income (Line 10 minus Line 16)		381,177
DETAILS OF WRITE-INS		
0901. Miscellaneous Income/(Expense)	46,561	46,561
0902.		
0903.		
0998. Summary of remaining write-ins for Line 9 from overflow page		
0999. Totals (Lines 0901 through 0903) plus 0998 (Line 9, above)	46,561	46,561
1501.		
1502.		
1503.		
1598. Summary of remaining write-ins for Line 15 from overflow page		
1599. Totals (Lines 1501 through 1503) plus 1598 (Line 15, above)		

- (a) Includes \$ 14,118 accrual of discount less \$ 4,178 amortization of premium and less \$ 0 paid for accrued interest on purchases.
- (b) Includes \$ 0 accrual of discount less \$ 0 amortization of premium and less \$ 0 paid for accrued dividends on purchases.
- (c) Includes \$ 0 accrual of discount less \$ 0 amortization of premium and less \$ 0 paid for accrued interest on purchases.
- (d) Includes \$ 0 for company's occupancy of its own buildings; and excludes \$ 0 interest on encumbrances.
- (e) Includes \$ 0 accrual of discount less \$ 0 amortization of premium and less \$ 0 paid for accrued interest on purchases.
- (f) Includes \$ 0 accrual of discount less \$ 0 amortization of premium.
- (g) Includes \$ 0 investment expenses and \$ 0 investment taxes, licenses and fees, excluding federal income taxes, attributable to segregated and Separate Accounts.
- (h) Includes \$ 0 interest on surplus notes and \$ 0 interest on capital notes.
- (i) Includes \$ 0 depreciation on real estate and \$ 0 depreciation on other invested assets.

EXHIBIT OF CAPITAL GAINS (LOSSES)

	1 Realized Gain (Loss) On Sales or Maturity	2 Other Realized Adjustments	3 Total Realized Capital Gain (Loss) (Columns 1 + 2)	4 Change in Unrealized Capital Gain (Loss)	5 Change in Unrealized Foreign Exchange Capital Gain (Loss)
1. U.S. Government bonds	(9,043)		(9,043)		
1.1 Bonds exempt from U.S. tax					
1.2 Other bonds (unaffiliated)					
1.3 Bonds of affiliates					
2.1 Preferred stocks (unaffiliated)					
2.11 Preferred stocks of affiliates					
2.2 Common stocks (unaffiliated)					
2.21 Common stocks of affiliates					
3. Mortgage loans					
4. Real estate					
5. Contract loans					
6. Cash, cash equivalents and short-term investments					
7. Derivative instruments					
8. Other invested assets					
9. Aggregate write-ins for capital gains (losses)					
10. Total capital gains (losses)	(9,043)		(9,043)		

DETAILS OF WRITE-INS					
0901.					
0902.					
0903.					
0998. Summary of remaining write-ins for Line 9 from overflow page					
0999. Totals (Lines 0901 through 0903) plus 0998 (Line 9, above)					

EXHIBIT OF NONADMITTED ASSETS

	1	2	3
	Current Year Total Nonadmitted Assets	Prior Year Total Nonadmitted Assets	Change in Total Nonadmitted Assets (Col. 2 - Col. 1)
1. Bonds (Schedule D)			
2. Stocks (Schedule D):			
2.1 Preferred stocks			
2.2 Common stocks			
3. Mortgage loans on real estate (Schedule B):			
3.1 First liens			
3.2 Other than first liens			
4. Real estate (Schedule A):			
4.1 Properties occupied by the company			
4.2 Properties held for the production of income			
4.3 Properties held for sale			
5. Cash (Schedule E-Part 1), cash equivalents (Schedule E-Part 2) and short-term investments (Schedule DA)			
6. Contract loans			
7. Other invested assets (Schedule BA)			
8. Receivables for securities			
9. Aggregate write-ins for invested assets			
10. Subtotals, cash and invested assets (Lines 1 to 9)			
11. Title plants (for Title insurers only)			
12. Investment income due and accrued			
13. Premiums and considerations:			
13.1 Uncollected premiums and agents' balances in the course of collection			
13.2 Deferred premiums, agents' balances and installments booked but deferred and not yet due			
13.3 Accrued retrospective premiums			
14. Reinsurance:			
14.1 Amounts recoverable from reinsurers			
14.2 Funds held by or deposited with reinsured companies			
14.3 Other amounts receivable under reinsurance contracts			
15. Amounts receivable relating to uninsured plans			
16.1 Current federal and foreign income tax recoverable and interest thereon			
16.2 Net deferred tax asset		2,650	2,650
17. Guaranty funds receivable or on deposit			
18. Electronic data processing equipment and software			
19. Furniture and equipment, including health care delivery assets			
20. Net adjustment in assets and liabilities due to foreign exchange rates			
21. Receivables from parent, subsidiaries and affiliates			
22. Health care and other amounts receivable			
23. Aggregate write-ins for other than invested assets			
24. Total assets excluding Separate Accounts, Segregated Accounts and Protected Cell Accounts (Lines 10 to 23)		2,650	2,650
25. From Separate Accounts, Segregated Accounts and Protected Cell Accounts			
26. Total (Lines 24 and 25)		2,650	2,650

DETAILS OF WRITE-INS			
0901.			
0902.			
0903.			
0998. Summary of remaining write-ins for Line 09 from overflow page			
0999. Totals (Lines 0901 through 0903 plus 0998) (Line 09 above)			
2301.			
2302.			
2303.			
2398. Summary of remaining write-ins for Line 23 from overflow page			
2399. Totals (Lines 2301 through 2303 plus 2398) (Line 23 above)			

NOTES TO FINANCIAL STATEMENTS

Note 1- Summary of Significant Accounting Policies

A. Accounting Practices

Effective January 1, 2001, and subject to any deviations prescribed or permitted by the Delaware Department of Insurance, the accompanying financial statements of LM General Insurance Company (the "Company") have been prepared in conformity with the National Association of Insurance Commissioners ("NAIC") *Accounting Practices and Procedures Manual* ("APP Manual").

B. Use of Estimates in the Preparation of the Financial Statements

The preparation of financial statements requires management to make estimates and assumptions that affect the reported amounts of assets, liabilities, revenues, and expenses. It also requires estimates in the disclosure of contingent assets and liabilities. Actual results could differ from these estimates.

C. Accounting Policies

Premiums are earned over the terms of the related policies and reinsurance contracts. Unearned premium reserves are established to cover the unexpired portion of premiums written. Such reserves are computed by pro-rata methods. Expenses incurred in connection with acquiring new insurance business, including acquisition costs such as sales commissions, are charged to operations as incurred. Expenses incurred are reduced for ceding allowances received or receivable.

In addition, the Company uses the following accounting policies:

1. Short term investments are carried at cost, adjusted where appropriate for amortization of premium or discount, or market as specified by the Purposes and Procedures Manual of the NAIC Securities Valuation Office (SVO Manual).
2. Bonds are carried at cost, adjusted where appropriate for amortization of premium or discount, or market as specified by the Purposes and Procedures Manual of the NAIC Securities Valuation Office (SVO Manual).
3. The Company does not own common stocks.
4. The Company does not own preferred stocks.
5. The Company does not own mortgage loans.
6. The Company does not own mortgage backed/asset backed securities.
7. The Company does not own any subsidiaries, controlled, or affiliated entities.
8. The Company does not own any joint ventures, partnerships, or limited liability companies.
9. Derivative Securities, refer to Note 8.
10. Refer to Note 29.
11. Unpaid losses and loss adjustment expenses include an amount determined from individual case estimates and loss reports and an amount, based on past experience, for losses incurred but not reported. Such liabilities are necessarily based on assumptions and estimates, and while management believes the amount is adequate, the ultimate liability may be in excess of or less than the amount provided. The methods for making such estimates and for establishing the resulting liability are continually reviewed and follow current standards of practice. Any adjustments to the liability are reflected in the period that they are determined.
12. The Company did not change its capitalization policy in 2007.
13. The Company has no pharmaceutical rebate receivables.

Note 2- Accounting Changes and Correction of Errors

There were no material changes in accounting principle or correction of errors during the year.

Note 3- Business Combinations and Goodwill

A. Statutory Purchase Method

The Company did not enter into any statutory purchases during the year.

B. Statutory Mergers

The Company did not enter into any statutory mergers during the year.

C. Impairment Loss

Not applicable

Note 4- Discontinued Operations

NOTES TO FINANCIAL STATEMENTS

The Company has no discontinued operations to report.

Note 5- Investments

A. Mortgage Loans, Including Mezzanine Real Estate Loans

The Company has no mortgage loans.

B. Troubled Debt Restructuring for Creditors

Not applicable

C. Reverse Mortgages

The Company has no reverse mortgages.

D. Loan-Backed Securities

The Company has no loan-backed securities.

E. Repurchase Agreements

The Company did not enter into any repurchase agreements during the year.

F. Real Estate

The Company does not own real estate.

G. Investments in Low-Income Housing Tax Credits

The Company does not hold investments in low-income housing tax credits.

Note 6- Joint Ventures, Partnerships & Limited Liability Companies

A. The Company has no investments in joint ventures, partnerships, or limited liability companies.

B. Impairments of joint ventures, partnerships and limited liability companies

Not applicable

Note 7- Investment Income

A. Accrued Investment Income

All investment income due and accrued over 90 days past due is excluded from Surplus.

B. Amounts Nonadmitted

No amounts were excluded as of December 31, 2007.

Note 8- Derivative Instruments

The Company's investment activities do not include derivatives. However, the Company may acquire derivatives as additions to bond, common stock, or preferred stock investments. These derivatives are ancillary to the overall investment and are immaterial to the underlying investment portfolio.

Note 9 - Income Taxes

A. The components of the net deferred tax assets and liabilities recognized in the Company's Assets, Liabilities, Surplus and Other Funds are as follows:

	December 31, 2007	December 31, 2006	Change
Total of gross deferred tax assets	98,000	56,000	42,000
Total of deferred tax liabilities	(123,999)	(53,000)	(71,000)
Net deferred tax asset	(25,999)	3,000	(28,999)
Net deferred tax asset non-admitted	0	(2,650)	2,650
Net admitted deferred tax asset	(25,999)	350	(26,350)

B. The Company does not have any deferred tax liabilities described in SSAP No. 10, Income Taxes, paragraph 6d.

C. The provisions for incurred taxes on earnings for the years ended December 31 are:

	2007	2006
Federal tax on operations	208,905	193,578
Net operating loss benefit	0	0
Foreign tax on operations	0	0
Income tax incurred on operations	208,905	193,578

NOTES TO FINANCIAL STATEMENTS

Tax on capital losses	(3,165)	(48,027)
Total income tax incurred	205,740	145,551

The Company's deferred tax assets result from tax credit carry forwards.

The change in deferred income taxes is comprised of the following:

	2007
Change in net deferred income tax (without unrealized gain or loss)	(29,000)
Tax effect of unrealized (gains) losses	0
Total change in net deferred income tax	(29,000)

- D. Effective tax rates differ from the current statutory rate of 35% due to the effect of tax-exempt interest and revisions to prior year estimates.
- E. The amount of Federal income taxes paid and available for recoupment in the event of future losses is \$119,000 from the current year and \$201,000 from the preceding year.

The Company had no net loss carryforward available to offset future net income subject to Federal income taxes.

- F. The Company's Federal income tax return is consolidated with the following entities:

Access Insurance Services, Co.	Liberty Mutual Group Inc.
Ambco Capital Corporation	Liberty Mutual Holding Company, Inc.
America First Insurance Company	Liberty Mutual Insurance Company
America First Lloyds Insurance Company	Liberty Mutual Managed Care, Inc.
American Ambassador Casualty Company	Liberty Mutual Personal Insurance Company
American Fire & Casualty Insurance Company *	Liberty Northwest Insurance Corporation
Avomark Insurance Company *	Liberty Personal Insurance Company
Berkeley Holding Company Associates, Inc.	Liberty RE (Bermuda) Limited
Berkeley Management Corporation	Liberty Real Estate Corporation
Bridgefield Casualty Insurance Company	Liberty Sponsored Insurance (Vermont) Inc.
Bridgefield Employers Insurance Company	Liberty Surplus Insurance Corporation
Capitol Agency, Inc. (Arizona corporation)	Liberty-USA Corporation
Capitol Agency, Inc. (Ohio corporation)	LIH-Re of America Corporation
Capitol Agency, Inc. (Tennessee corporation)	LIH U.S. P&C Corporation
Cascade Disability Management, Inc.	LIIA Insurance Agency, Inc.
Colorado Casualty Insurance Company	LIU Specialty Insurance Agency, Inc.
Companies Agency Insurance Services of California	LLS Insurance Agency of Nevada, Inc.
Companies Agency of Alabama, Inc.	LM General Insurance Company
Companies Agency of Georgia, Inc.	LM Insurance Corporation
Companies Agency of Kentucky, Inc.	LM Personal Insurance Company
Companies Agency of Massachusetts, Inc.	LM Property & Casualty Insurance Company
Companies Agency of Michigan, Inc.	LMHC Massachusetts Holding, Inc.
Companies Agency of New York, Inc.	LRE Properties, Inc.
Companies Agency of Pennsylvania, Inc.	Mid-American Agency, Inc.
Companies Agency of Phoenix, Inc.	Mid-American Fire and Casualty Company
Consolidated Insurance Company	Missouri Agency, Inc.
Copley Venture Capital, Inc.	North Pacific Insurance Company
Countrywide Services Corporation	Oregon Automobile Insurance Company
Diversified Settlements, Inc.	OCASCO Budget, Inc *
Employers Insurance Company of Wausau	OCI Printing, Inc.*
Excelsior Insurance Company	Ohio Casualty Corporation *
Florida State Agency, Inc.	Ohio Casualty Insurance Company *
Globe American Casualty Company	Ohio Casualty of New Jersey, Inc *
Golden Eagle Insurance Corporation	Ohio Life Brokerage Services, Inc.*
Gulf States AIF, Inc.	Ohio Security Insurance Company *
Hawkeye-Security Insurance Company	Peerless Indemnity Insurance Company
Helmsman Insurance Agency of Illinois, Inc.	Peerless Insurance Company
Helmsman Insurance Agency of Texas, Inc.	San Diego Insurance Company
Heritage-Summit Healthcare of Florida, Inc.	State Agency, Inc. (Indiana corporation)
Indiana Insurance Company	State Agency, Inc. (Wisconsin corporation)
LEXCO Limited	St. James Insurance Company
Liberty Assignment Corporation	Summit Consulting, Inc.
Liberty Energy Canada, Inc. *	Summit Consulting, Inc. of Louisiana
Liberty Financial Services, Inc.	Summit Holding Southeast, Inc.
Liberty Hospitality Group, Inc.	The First Liberty Insurance Corporation
Liberty Insurance Company of America	The Midwestern Indemnity Company
Liberty Insurance Corporation	The National Corporation
Liberty Insurance Holdings, Inc.	The Netherlands Insurance Company
Liberty Insurance Underwriters, Inc.	Wausau Service Corporation
Liberty Life Assurance Company of Boston	Wausau Signature Agency, Inc.
Liberty Life Holdings, Inc.	Wausau Business Insurance Company
Liberty Lloyds of Texas Insurance Company	Wausau General Insurance Company
Liberty Management Services, Inc.	Wausau Underwriters Insurance Company
Liberty Mexico Holdings, Inc.	West American Insurance Company *
Liberty Mutual Fire Insurance Company	

NOTES TO FINANCIAL STATEMENTS

* This company joined the consolidated group in 2007 and its activity from the date it joined the group is included in the consolidated return.

The method of federal income tax allocation is subject to a written agreement. Allocation is based upon separate return calculations with credit applied for losses as appropriate. The Company has the enforceable right to recoup prior year payments in the event of future losses.

Note 10- Information concerning Parent, Subsidiaries and Affiliates

- A. All of the outstanding shares of capital stock of the Company are held by Liberty Mutual Insurance Company ("LMIC"), a Massachusetts company. The ultimate parent of LMIC Company is Liberty Mutual Holding Company, Inc., a Massachusetts company.
- B. Transactions entered into by the Company with its affiliates are described on Schedule Y Part 2.
- C. The Company Received a capital contribution from its parent LMIC in the amount of \$1,200,000.
- D. At December 31, 2007 the company reported \$709,629 due to affiliates. In general the terms of the intercompany arrangements require settlement at least quarterly.
- E. The Company did not have any material contingent exposures of assets to liabilities as a result of guarantees or undertakings for the benefits of an affiliate.
- F. The following affiliates have service arrangements with the Company:

There is a "Service Agreement" between the Company and LMIC, under which LMIC provides the Company with services of personnel employed by LMIC, office space, supplies, equipment, telephone and wire services, the use of computers and similar machines to the extent necessary or appropriate. The Company has an investment services agreement with LMIC.

There is a "Distribution Agreement" between the Company and Helmsman Insurance Agency, Inc., ("Helmsman") whereby Helmsman provides agent commission payments, accounting, office services and other services under the terms of the "Distribution Agreement".

- G. The Company is part of a holding company structure as illustrated in Schedule Y part 1.
- H. The Company does not own shares of any upstream intermediate or ultimate parent, either directly or indirectly via a downstream subsidiary, controlled or affiliated company.
- I. The Company does not own investments in subsidiary, controlled or affiliated companies.
- J. Impairment of subsidiaries
Refer to 10 I
- K. Investment in foreign insurance subsidiaries.
Refer to 10 I
- L. Investment in downstream noninsurance holding companies.
Refer to 10 I

Note 11- Debt

- A. The Company has no capital notes.
- B. The Company has no outstanding borrowed money.

Note 12- Retirement Plans, Deferred Compensation, Postemployment Benefits and Compensated Absences and Other Postretirement Benefit Plans

The Company does not have any direct employees and therefore, does not have any direct obligations for a defined benefit plan, deferred compensation arrangements, compensated absences or other post retirement benefit plans. Services for the operation of the Company are provided under provisions of the Management Services Agreements as described in Note 10 F.

Note 13- Capital and Surplus, Shareholders' Dividend Restrictions and Quasi-Reorganizations

- 1. Common Stock

The Company has 5,000 shares authorized, and 2,000 shares issued and outstanding as of December 31, 2007. All shares have a stated par value of \$1,750.

- 2. Preferred Stock

Not applicable

- 3. Dividend Restrictions

NOTES TO FINANCIAL STATEMENTS

There are no dividend restrictions

4. The maximum amount of dividends that can be paid by Delaware domiciled insurance companies to shareholders without prior approval of the Insurance Commissioner, is the greater of (a) 10% of policyholder's surplus, or (b) net income, not including realized capital gains. The maximum dividend payout that may be made without prior approval during 2008 is \$674,782.
5. The Company does not have restricted unassigned surplus.
6. The Company had no advances to surplus.
7. The Company does not hold stock for special purposes.
8. The Company does not hold special surplus funds.
9. The portion of unassigned funds (surplus) represented by cumulative unrealized gains and (losses) is \$0.
10. Surplus Notes
Not applicable
11. Quasi re-organization (dollar impact)
Not applicable
12. Quasi re-organization (effective date)
Not applicable
13. The company did not pay a dividend to its parent during 2007.

Note 14- Contingencies

A. Contingent Commitments

The Company has no commitments or contingent commitments to affiliates or other entities, as indicated in Note 10 E. The Company has made no guarantees on behalf of affiliates.

B. Assessments

The Company is subject to guaranty fund and other assessments by the states in which it writes business. Guaranty fund assessments are accrued at the time of insolvencies. Other assessments are accrued either at the time of assessments or in the case of premium based assessments, at the time the premiums are written, or, in the case of loss based assessments, at the time the losses are incurred.

As a result of an inter-company reinsurance arrangement (see Note 26), all guaranty fund and other assessments liabilities are ceded to LM Property and Casualty Insurance Company (LMPAC).

C. Gain Contingencies

Not applicable

D. Claims related extra contractual obligations and bad faith losses stemming from lawsuits

The company paid the following amounts in the reporting period to settle claims related to extra contractual obligations or bad faith claims stemming from lawsuits.

	Direct
Claims related ECO and bad faith losses paid during the reporting period	\$ 887,325

Number of claims where amounts were paid to settle claims related extra contractual obligations or bad faith claims resulting from lawsuits during the reporting period.

(a) 0-25 Claims	(b) 26-50 Claims	(c) 51-100 Claims	(d) 101-500 Claims	(e) More than 500 Claims
X				

Indicate whether claim count information is disclosed per claim or per claimant.

(f) Per Claim [x] (g) Per Claimant []

E. All other Contingencies

Lawsuits arise against the Company in the normal course of business. Contingent liabilities arising from litigation, income taxes, and other matters are not considered material in relation to the financial position of the Company.

As disclosed in Note 9 F, the Company is a member of a controlled group for federal income tax purposes, and that group

NOTES TO FINANCIAL STATEMENTS

includes Liberty Mutual Group Inc. ("LMGI"). LMGI is the plan sponsor of the Liberty Mutual Retirement Benefit Plan, a qualified plan under federal law. Pursuant to federal law, if LMGI has not made the minimum required contributions with respect to the Liberty Mutual Retirement Benefit Plan, the Company, jointly and severally with all other members of the controlled group, would be contingently liable to make such contributions.

Note 15- Leases

- A. The Company is not involved in material lease obligations.
- B. Leasing as a significant part of lessor's business activities

Not applicable

Note 16- Information About Financial Instruments with Off-Balance Sheet Risk and Financial Instruments with Concentrations of Credit Risk

The Company is not exposed to financial instruments with off-balance sheet risk or with concentrations of credit risk.

Note 17- Sale, Transfer and Servicing of Financial Assets and Extinguishments of Liabilities

- A. Transfers of Receivables reported as sales:

The Company did not have any transfers of receivables reported as sales during the year.

- B. Transfers and servicing of financial assets:

The Company participates in a Securities Lending Program to generate additional income, whereby certain fixed income securities are loaned for a period of time from the Company's portfolio to qualifying third parties, via a lending agent. The company does not participate in term loans, therefore, the company does not have contractual collateral transactions that extend beyond one year from the reporting date. Borrowers of these securities provide collateral equal to or in excess of 102% of the market value of the loaned securities. Acceptable collateral may be in the form of cash or U.S. Government securities. The market value of the loaned securities is monitored and additional collateral is obtained if the market value of the collateral falls below 102% of the market value of the loaned securities. Additionally, the lending agent indemnifies the Company against borrower defaults. The loaned securities remain a recorded asset of the Company; however, the Company records a liability for the amount of cash collateral related to the loaned securities.

At December 31, 2007 the total market value of fixed maturities on loan was \$2,137,002.03 with corresponding collateral value of \$2,208,427.34 of which \$1,004,535.40 represents cash collateral.

- C. Wash Sales

The company did not have any wash sale transactions during the year

Note 18-Gain or Loss from Uninsured Accident and Health Plans and the Uninsured Portion of Partially Insured Plans

- A. Administrative Services Only (ASO) Plans

Not applicable

- B. Administrative Services Contract (ASC) Plans

Not applicable

- C. Medicare or Other Similarly Structured Cost Based Reimbursement Contracts

Not applicable

Note 19- Direct Premium Written/Produced by Managing General Agents/ Third Party Administrators

The Company has no direct premiums written through managing general agents or third party administrators.

Note 20- Other Items

- A. The Company has no extraordinary items to report.

- B. Troubled Debt Restructuring for Debtors

Not applicable

- C. Other Disclosures

1) Assets in the amount of \$3,851,960 and \$3,738,268 as of December 31, 2007 and 2006, respectively, were on deposit with government authorities or trustees as required by law.

- D. As a result of the Inter-company 100% Quota Share Reinsurance Agreement with LMPAC (see Note 25), the Company has no exposure to uncollectible premium receivable balances.

- E. Business Interruption Insurance Recoveries

NOTES TO FINANCIAL STATEMENTS

The Company does not purchase Business Interruption coverage.

F. State Transferable Tax Credits

The Company does not hold state transferable tax credits.

G. The Company does not have deposits admitted under section 6603 of the Internal Revenue Services Code.

H. Hybrid Securities

The Company does not hold hybrid securities.

I. Sub-Prime Lending

The Company does not have exposure to sub-prime mortgage related risk.

Note 21- Events Subsequent

There were no events subsequent to December 31, 2007 that would require disclosure.

Note 22- Reinsurance

- A. Excluding amounts arising pursuant to the inter company Reinsurance Agreement, as described in Note 25, there are no unsecured reinsurance recoverables with an individual rein surer which exceed 3% of policyholders surplus.
- B. There is no reinsurance recoverable in dispute from an individual rein surer which exceeds 5% of the Company's surplus. In addition, the aggregate reinsurance recoverable in dispute does not exceed 10% of the Company's surplus.
- C. The Company has no unearned premium reserves for direct, assumed or ceded business.
- There are no sliding scale adjustments, or other profit sharing commissions for direct, assumed or ceded business.
- The Company does not use protected cells as an alternative to traditional reinsurance.
- D. The Company has not written off any uncollectible balances in the current year.
- E. The Company has not recorded any commutations in the current year.
- F. The Company has no retroactive reinsurance.
- G. There are no contracts recorded as deposit accounting.

Note 23 - Retrospectively Rated Contracts and Contracts Subject to Redetermination

The Company does not have net accrued retrospective premiums.

Note 24 - Changes in Incurred Losses and Loss Adjustment Expenses

As a result of the Inter-company 100% Quota Share Reinsurance Agreement with LMPAC (see Note 25), the Company has no net exposure to changes in incurred losses and loss adjustment expenses.

Note 25- Intercompany Pooling Arrangements

The Company participates in a 100% Quota Share Reinsurance Agreement with an affiliate, LMPAC. Pursuant to the Agreement, after external reinsurance, the Company cedes its net underwriting activity to LMPAC.

Note 26- Structured Settlements

- A. As a result of the Inter-company 100% Quota Share Reinsurance Agreement with LMPAC (see Note 25), the Company has no exposure to contingent liabilities from the purchase of annuities.
- B. Not applicable

Note 27 - Health Care Receivables

Not applicable

Note 28 - Participating Policies

Not applicable

Note 29 – Premium Deficiency Reserves

As of December 31, 2007, the Company had no liabilities related to premium deficiency reserves. The Company considers anticipated investment income when calculating its premium deficiency reserves.

Note 30- High Dollar Deductible Policies

As a result of the Inter-company 100% Quota Share Reinsurance Agreement with LMPAC (see Note 25), the Company does

NOTES TO FINANCIAL STATEMENTS

not have any net high dollar deductible policy liabilities.

Note 31- Discounting of Liabilities for Unpaid Losses and Unpaid Loss Adjustment Expenses

Not applicable

Note 32 - Asbestos/Environmental Reserves

As a result of the Inter-company 100% Quota Share Reinsurance Agreement with LMPAC (see Note 25), the Company has no net exposure to asbestos and environmental claims.

Note 33- Subscriber Savings Accounts

The Company is not a reciprocal insurance company.

Note 34 - Multiple Peril Crop Insurance

Not applicable

SUMMARY INVESTMENT SCHEDULE

Investment Categories	Gross Investment Holdings		Admitted Assets as Reported in the Annual Statement	
	1 Amount	2 Percentage	3 Amount	4 Percentage
1. Bonds:				
1.1 U.S. treasury securities	7,405,364	81.082	7,405,364	81.082
1.2 U.S. government agency obligations (excluding mortgage-backed securities):				
1.21 Issued by U.S. government agencies				
1.22 Issued by U.S. government sponsored agencies				
1.3 Foreign government (including Canada, excluding mortgage-backed securities)				
1.4 Securities issued by states, territories, and possessions and political subdivisions in the U.S.:				
1.41 States, territories and possessions general obligations				
1.42 Political subdivisions of states, territories and possessions and political subdivisions general obligations				
1.43 Revenue and assessment obligations				
1.44 Industrial development and similar obligations				
1.5 Mortgage-backed securities (includes residential and commercial MBS):				
1.51 Pass-through securities:				
1.511 Issued or guaranteed by GNMA				
1.512 Issued or guaranteed by FNMA and FHLMC				
1.513 All other				
1.52 CMOs and REMICs:				
1.521 Issued or guaranteed by GNMA, FNMA, FHLMC or VA				
1.522 Issued by non-U.S. Government issuers and collateralized by mortgage-backed securities issued or guaranteed by agencies shown in Line 1.521				
1.523 All other				
2. Other debt and other fixed income securities (excluding short term):				
2.1 Unaffiliated domestic securities (includes credit tenant loans rated by the SVO)				
2.2 Unaffiliated foreign securities				
2.3 Affiliated securities				
3. Equity interests:				
3.1 Investments in mutual funds	723,270	7.919	723,270	7.919
3.2 Preferred stocks:				
3.21 Affiliated				
3.22 Unaffiliated				
3.3 Publicly traded equity securities (excluding preferred stocks):				
3.31 Affiliated				
3.32 Unaffiliated				
3.4 Other equity securities:				
3.41 Affiliated				
3.42 Unaffiliated				
3.5 Other equity interests including tangible personal property under lease:				
3.51 Affiliated				
3.52 Unaffiliated				
4. Mortgage loans:				
4.1 Construction and land development				
4.2 Agricultural				
4.3 Single family residential properties				
4.4 Multifamily residential properties				
4.5 Commercial loans				
4.6 Mezzanine real estate loans				
5. Real estate investments:				
5.1 Property occupied by company				
5.2 Property held for production of income (including \$ 0 of property acquired in satisfaction of debt)				
5.3 Property held for sale (including \$ 0 property acquired in satisfaction of debt)				
6. Contract loans				
7. Receivables for securities				
8. Cash, cash equivalents and short-term investments	1,004,535	10.999	1,004,535	10.999
9. Other invested assets				
10. Total invested assets	9,133,169	100.000	9,133,169	100.000

GENERAL INTERROGATORIES

PART 1 - COMMON INTERROGATORIES

GENERAL

- 1.1 Is the reporting entity a member of an Insurance Holding Company System consisting of two or more affiliated persons, one or more of which is an insurer? Yes [X] No []
- 1.2 If yes, did the reporting entity register and file with its domiciliary State Insurance Commissioner, Director or Superintendent or with such regulatory official of the state of domicile of the principal insurer in the Holding Company System, a registration statement providing disclosure substantially similar to the standards adopted by the National Association of Insurance Commissioners (NAIC) in its Model Insurance Holding Company System Regulatory Act and model regulations pertaining thereto, or is the reporting entity subject to standards and disclosure requirements substantially similar to those required by such Act and regulations? Yes [X] No [] N/A []
- 1.3 State Regulating? Delaware
- 2.1 Has any change been made during the year of this statement in the charter, by-laws, articles of incorporation, or deed of settlement of the reporting entity? Yes [] No [X]
- 2.2 If yes, date of change: 12/31/2006
- 3.1 State as of what date the latest financial examination of the reporting entity was made or is being made. 12/31/2006
- 3.2 State the as of date that the latest financial examination report became available from either the state of domicile or the reporting entity. This date should be the date of the examined balance sheet and not the date the report was completed or released. 12/31/2006
- 3.3 State as of what date the latest financial examination report became available to other states or the public from either the state of domicile or the reporting entity. This is the release date or completion date of the examination report and not the date of the examination (balance sheet date). 09/09/2003
- 3.4 By what department or departments? State of Delaware Insurance Department

- 4.1 During the period covered by this statement, did any agent, broker, sales representative, non-affiliated sales/service organization or any combination thereof under common control (other than salaried employees of the reporting entity) receive credit or commissions for or control a substantial part (more than 20 percent of any major line of business measured on direct premiums) of:
- 4.11 sales of new business? Yes [] No [X]
- 4.12 renewals? Yes [] No [X]
- 4.2 During the period covered by this statement, did any sales/service organization owned in whole or in part by the reporting entity or an affiliate, receive credit or commissions for or control a substantial part (more than 20 percent of any major line of business measured on direct premiums) of:
- 4.21 sales of new business? Yes [] No [X]
- 4.22 renewals? Yes [] No [X]
- 5.1 Has the reporting entity been a party to a merger or consolidation during the period covered by this statement? Yes [] No [X]
- 5.2 If yes, provide the name of the entity, NAIC company code, and state of domicile (use two letter state abbreviation) for any entity that has ceased to exist as a result of the merger or consolidation.

1 Name of Entity	2 NAIC Company Code	3 State of Domicile

- 6.1 Has the reporting entity had any Certificates of Authority, licenses or registrations (including corporate registration, if applicable) suspended or revoked by any governmental entity during the reporting period? Yes [] No [X]
- 6.2 If yes, give full information
- 7.1 Does any foreign (non-United States) person or entity directly or indirectly control 10% or more of the reporting entity? Yes [] No [X]
- 7.2 If yes,
- 7.21 State the percentage of foreign control 0%
- 7.22 State the nationality(s) of the foreign person(s) or entity(s); or if the entity is a mutual or reciprocal, the nationality of its manager or attorney-in-fact and identify the type of entity(s) (e.g., individual, corporation, government, manager or attorney-in-fact).

1 Nationality	2 Type of Entity

- 8.1 Is the company a subsidiary of a bank holding company regulated by the Federal Reserve Board? Yes [] No [X]
- 8.2 If response to 8.1 is yes, please identify the name of the bank holding company.

GENERAL INTERROGATORIES

PART 1 - COMMON INTERROGATORIES

- 8.3 Is the company affiliated with one or more banks, thrifts or securities firms? Yes [] No [X]
 8.4 If response to 8.3 is yes, please provide the names and locations (city and state of the main office) of any affiliates regulated by a federal financial regulatory services agency [i.e. the Federal Reserve Board (FRB), the Office of the Comptroller of the Currency (OCC), the Office of Thrift Supervision (OTS), the Federal Deposit Insurance Corporation (FDIC) and the Securities Exchange Commission (SEC)] and identify the affiliate's primary federal regulator.

1 Affiliate Name	2 Location (City, State)	3 FRB	4 OCC	5 OTS	6 FDIC	7 SEC

9. What is the name and address of the independent certified public accountant or accounting firm retained to conduct the annual audit?
 Ernst & Young, LLP
 200 Clarendon Street, Boston, MA 02116
10. What is the name, address and affiliation (officer/employee of the reporting entity or actuary/consultant associated with an actuarial consulting firm) of the individual providing the statement of actuarial opinion/certification? Roy K. Morell
 175 Berkeley Street, Boston, MA 02117
 Officer of Liberty Mutual Insurance Company
- 11.1 Does the reporting entity own any securities of a real estate holding company or otherwise hold real estate indirectly? Yes [] No [X]
- | | |
|---|----------|
| 11.11 Name of real estate holding company | _____ |
| 11.12 Number of parcels involved | _____ |
| 11.13 Total book/adjusted carrying value | \$ _____ |

- 11.2 If yes, provide explanation: _____
12. FOR UNITED STATES BRANCHES OF ALIEN REPORTING ENTITIES ONLY:
- 12.1 What changes have been made during the year in the United States manager or the United States trustees of the reporting entity?

- 12.2 Does this statement contain all business transacted for the reporting entity through its United States Branch on risks wherever located? Yes [] No [X]
- 12.3 Have there been any changes made to any of the trust indentures during the year? Yes [] No [X]
- 12.4 If answer to (12.3) is yes, has the domiciliary or entry state approved the changes? Yes [] No [] N/A [X]
- 13.1 Are the senior officers (principal executive officer, principal financial officer, principal accounting officer or controller, or persons performing similar functions) of the reporting entity subject to a code of ethics, which includes the following standards?
 a. Honest and ethical conduct, including the ethical handling of actual or apparent conflicts of interest between personal and professional relationships;
 b. Full, fair, accurate, timely and understandable disclosure in the periodic reports required to be filed by the reporting entity;
 c. Compliance with applicable governmental laws, rules and regulations;
 d. The prompt internal reporting of violations to an appropriate person or persons identified in the code; and
 e. Accountability for adherence to the code. Yes [X] No []
- 13.11 If the response to 13.1 is No, please explain: _____
- 13.2 Has the code of ethics for senior managers been amended? Yes [] No [X]
- 13.21 If the response to 13.2 is Yes, provide information related to amendment(s). _____
- 13.3 Have any provisions of the code of ethics been waived for any of the specified officers? Yes [] No [X]
- 13.31 If the response to 13.3 is Yes, provide the nature of any waiver(s). _____

BOARD OF DIRECTORS

14. Is the purchase or sale of all investments of the reporting entity passed upon either by the board of directors or a subordinate committee thereof? Yes [X] No []
15. Does the reporting entity keep a complete permanent record of the proceedings of its board of directors and all subordinate committees thereof? Yes [X] No []
16. Has the reporting entity an established procedure for disclosure to its board of directors or trustees of any material interest or affiliation on the part of any of its officers, directors, trustees or responsible employees that is in conflict or is likely to conflict with the official duties of such person? Yes [X] No []

FINANCIAL

17. Has this statement been prepared using a basis of accounting other than Statutory Accounting Principles (e.g., Generally Accepted Accounting Principles)? Yes [] No [X]
- 18.1 Total amount loaned during the year (inclusive of Separate Accounts, exclusive of policy loans):
- | | |
|---|----------|
| 18.11 To directors or other officers | \$ _____ |
| 18.12 To stockholders not officers | \$ _____ |
| 18.13 Trustees, supreme or grand (Fraternal only) | \$ _____ |
- 18.2 Total amount of loans outstanding at the end of year (inclusive of Separate Accounts, exclusive of policy loans):
- | | |
|---|----------|
| 18.21 To directors or other officers | \$ _____ |
| 18.22 To stockholders not officers | \$ _____ |
| 18.23 Trustees, supreme or grand (Fraternal only) | \$ _____ |

GENERAL INTERROGATORIES

PART 1 - COMMON INTERROGATORIES

- 19.1 Were any assets reported in this statement subject to a contractual obligation to transfer to another party without the liability for such obligation being reported in the statement? Yes [] No [X]
- 19.2 If yes, state the amount thereof at December 31 of the current year:
- | | | | |
|----------------------------|--|----|---|
| 19.21 Rented from others | | \$ | 0 |
| 19.22 Borrowed from others | | \$ | 0 |
| 19.23 Leased from others | | \$ | 0 |
| 19.24 Other | | \$ | 0 |
- 20.1 Does this statement include payments for assessments as described in the Annual Statement Instructions other than guaranty fund or guaranty association assessments? Yes [] No [X]
- 20.2 If answer is yes:
- | | | | |
|--|--|----|---|
| 20.21 Amount paid as losses or risk adjustment | | \$ | 0 |
| 20.22 Amount paid as expenses | | \$ | 0 |
| 20.23 Other amounts paid | | \$ | 0 |
- 21.1 Does the reporting entity report any amounts due from parent, subsidiaries or affiliates on Page 2 of this statement? Yes [] No [X]
- 21.2 If yes, indicate any amounts receivable from parent included in the Page 2 amount: \$ 0

INVESTMENT

- 22.1 Were all the stocks, bonds and other securities owned December 31 of current year, over which the reporting entity has exclusive control, in the actual possession of the reporting entity on said date, except as shown by Schedule E - Part 3 - Special Deposits? Yes [X] No []
- 22.2 If no, give full and complete information, relating thereto
- 23.1 Were any of the stocks, bonds or other assets of the reporting entity owned at December 31 of the current year not exclusively under the control of the reporting entity, or has the reporting entity sold or transferred any assets subject to a put option contract that is currently in force? (Exclude securities subject to Interrogatory 19.1). Yes [X] No []
- 23.2 If yes, state the amount thereof at December 31 of the current year:
- | | | | |
|--|--|----|-----------|
| 23.21 Loaned to others | | \$ | 2,137,002 |
| 23.22 Subject to repurchase agreements | | \$ | 0 |
| 23.23 Subject to reverse repurchase agreements | | \$ | 0 |
| 23.24 Subject to dollar repurchase agreements | | \$ | 0 |
| 23.25 Subject to reverse dollar repurchase agreements | | \$ | 0 |
| 23.26 Pledged as collateral | | \$ | 0 |
| 23.27 Placed under option agreements | | \$ | 0 |
| 23.28 Letter stock or securities restricted as to sale | | \$ | 0 |
| 23.29 On deposit with state or other regulatory body | | \$ | 3,851,960 |
| 23.291 Other | | \$ | 0 |

23.3 For category (23.28) provide the following:

1 Nature of Restriction	2 Description	3 Amount

- 24.1 Does the reporting entity have any hedging transactions reported on Schedule DB? Yes [] No [X]
- 24.2 If yes, has a comprehensive description of the hedging program been made available to the domiciliary state? Yes [] No [] N/A [X]
- If no, attach a description with this statement.
- 25.1 Were any preferred stocks or bonds owned as of December 31 of the current year mandatorily convertible into equity, or, at the option of the issuer, convertible into equity? Yes [] No [X]
- 25.2 If yes, state the amount thereof at December 31 of the current year. \$ 0

26. Excluding items in Schedule E, real estate, mortgage loans and investments held physically in the reporting entity's offices, vaults or safety deposit boxes, were all stocks, bonds and other securities owned throughout the current year held pursuant to a custodial agreement with a qualified bank or trust company in accordance with Section 3, III Conducting Examinations, G - Custodial or Safekeeping agreements of the NAIC Financial Condition Examiners Handbook? Yes [X] No []

26.01 For agreements that comply with the requirements of the NAIC Financial Condition Examiners Handbook, complete the following:

1 Name of Custodian(s)	2 Custodian's Address
JP MORGAN CHASE	3 Chase Metro Tech Center, Brooklyn, NY 11245

26.02 For all agreements that do not comply with the requirements of the NAIC Financial Condition Examiners Handbook, provide the name, location and a complete explanation:

1 Name(s)	2 Location(s)	3 Complete Explanation(s)

- 26.03 Have there been any changes, including name changes, in the custodian(s) identified in 26.01 during the current year? Yes [] No [X]

GENERAL INTERROGATORIES

PART 1 - COMMON INTERROGATORIES

26.04 If yes, give full and complete information relating thereto:

1 Old Custodian	2 New Custodian	3 Date of Change	4 Reason

26.05 Identify all investment advisors, brokers/dealers or individuals acting on behalf of brokers/dealers that have access to the investment accounts, handle securities and have authority to make investments on behalf of the reporting entity:

1 Central Registration Depository Number(s)	2 Name	3 Address

27.1 Does the reporting entity have any diversified mutual funds reported in Schedule D, Part 2 (diversified according to the Securities and Exchange Commission (SEC) in the Investment Company Act of 1940 [Section 5 (b) (1)])? Yes [] No []

27.2 If yes, complete the following schedule:

1 CUSIP#	2 Name of Mutual Fund	3 Book/Adjusted Carrying Value
27.2999	Total	

27.3 For each mutual fund listed in the table above, complete the following schedule:

1 Name of Mutual Fund (from above table)	2 Name of Significant Holding of the Mutual Fund	3 Amount of Mutual Fund's Book/Adjusted Carrying Value Attributable to the Holding	4 Date of Valuation

28. Provide the following information for all short-term and long-term bonds and all preferred stocks. Do not substitute amortized value or statement value for fair value.

	1 Statement (Admitted) Value	2 Fair Value	3 Excess of Statement over Fair Value (-), or Fair Value over Statement (+)
28.1 Bonds	8,875,089	9,007,309	132,222
28.2 Preferred stocks			
28.3 Totals	8,875,089	9,007,309	132,222

28.4 Describe the sources or methods utilized in determining the fair values: IDC, Bloomberg, NAIC-SVO, Broker Quotes, Analytically Determined

29.1 Have all the filing requirements of the Purposes and Procedures manual of the NAIC Securities Valuation Office been followed? Yes [] No []

29.2 If no, list exceptions:

OTHER

30.1 Amount of payments to trade associations, service organizations and statistical or rating bureaus, if any? \$ _____ 0

30.2 List the name of the organization and the amount paid if any such payment represented 25% or more of the total payments to trade associations, service organizations and statistical or rating bureaus during the period covered by this statement.

1 Name	2 Amount Paid
	\$
	\$
	\$

31.1 Amount of payments for legal expenses, if any? \$ _____ 0

GENERAL INTERROGATORIES

PART 1 - COMMON INTERROGATORIES

31.2 List the name of the firm and the amount paid if any such payment represented 25% or more of the total payments for legal expenses during the period covered by this statement.

1 Name	2 Amount Paid
	\$
	\$
	\$

32.1 Amount of payments for expenditures in connection with matters before legislative bodies, officers or departments of government, if any?

\$ _____ 0

32.2 List the name of the firm and the amount paid if any such payment represented 25% or more of the total payment expenditures in connection with matters before legislative bodies, officers or departments of government during the period covered by this statement.

1 Name	2 Amount Paid
	\$
	\$
	\$
	\$

GENERAL INTERROGATORIES

PART 2 - PROPERTY & CASUALTY INTERROGATORIES

1.1 Does the reporting entity have any direct Medicare Supplement Insurance in force? YES [] NO [X]
 1.2 If yes, indicate premium earned on U. S. business only. \$ 0
 1.3 What portion of Item (1.2) is not reported on the Medicare Supplement Insurance Experience Exhibit? \$ 0
 1.31 Reason for excluding

1.4 Indicate amount of earned premium attributable to Canadian and/or Other Alien not included in Item (1.2) above. \$ 0
 1.5 Indicate total incurred claims on all Medicare Supplement insurance. \$ 0

1.6 Individual policies:
 Most current three years:
 1.61 Total premium earned \$ 0
 1.62 Total incurred claims \$ 0
 1.63 Number of covered lives \$ 0
 All years prior to most current three years:
 1.64 Total premium earned \$ 0
 1.65 Total incurred claims \$ 0
 1.66 Number of covered lives \$ 0

1.7 Group policies:
 Most current three years:
 1.71 Total premium earned \$ 0
 1.72 Total incurred claims \$ 0
 1.73 Number of covered lives \$ 0
 All years prior to most current three years:
 1.74 Total premium earned \$ 0
 1.75 Total incurred claims \$ 0
 1.76 Number of covered lives \$ 0

2. Health Test:

	1	2
	Current Year	Prior Year
2.1 Premium Numerator	\$ 0	\$ 0
2.2 Premium Denominator	\$ 0	\$ 0
2.3 Premium Ratio (2.1/2.2)	0.00	0.00
2.4 Reserve Numerator	\$ 0	\$ 0
2.5 Reserve Denominator	\$ 754,636	\$ 764,868
2.6 Reserve Ratio (2.4/2.5)	0.00	0.00

3.1 Does the reporting entity issue both participating and non-participating policies? YES [] NO [X]
 3.2 If yes, state the amount of calendar year premiums written on:
 3.21 Participating policies \$ 0
 3.22 Non-participating policies \$ 0

4. For Mutual Reporting Entities and Reciprocal Exchange only:
 4.1 Does the reporting entity issue assessable policies? YES [] NO [X]
 4.2 Does the reporting entity issue non-assessable policies? YES [] NO [X]
 4.3 If assessable policies are issued, what is the extent of the contingent liability of the policyholders? 0 %
 4.4 Total amount of assessments paid or ordered to be paid during the year on deposit notes or contingent premiums. \$ 0

5. For Reciprocal Exchanges Only:
 5.1 Does the exchange appoint local agents? YES [] NO [X]
 5.2 If yes, is the commission paid:
 5.21 Out of Attorney's-in-fact compensation YES [] NO [] N/A [X]
 5.22 As a direct expense of the exchange YES [] NO [] N/A [X]

5.3 What expenses of the Exchange are not paid out of the compensation of the Attorney-in-fact?
 5.4 Has any Attorney-in-fact compensation, contingent on fulfillment of certain conditions, been deferred? YES [] NO [X]
 5.5 If yes, give full information

GENERAL INTERROGATORIES
(Continued)

PART 2 - PROPERTY & CASUALTY INTERROGATORIES

- 6.1 What provision has this reporting entity made to protect itself from an excessive loss in the event of a catastrophe under a workers' compensation contract issued without limit of loss: The Company has a 100% Quota Share agreement with Liberty Mutual Insurance Company.
- 6.2 Describe the method used to estimate this reporting entity's probable maximum insurance loss, and identify the type of insured exposures comprising that probable maximum loss, the locations of concentrations of those exposures and the external resources (such as consulting firms or computer software models), if any, used in the estimation process: The Company employs industry recognized catastrophe modeling software to estimate the PML. For property exposures, we employ RiskLink v6.0 by RMS and AIR Classic/2 v8.0 by AIR. For WC, Liberty Mutual utilizes RiskLink v6.0 from RMS.
- 6.3 What provision has this reporting entity made (such as a catastrophic reinsurance program) to protect itself from an excessive loss arising from the types and concentrations of insured exposures comprising its probable maximum property insurance loss? The Company has a 100% Quota Share agreement with Liberty Mutual Insurance Company.
- 6.4 Does the reporting entity carry catastrophe reinsurance protection for at least one reinstatement, in an amount sufficient to cover its estimated probable maximum loss attributable to a single loss event or occurrence? YES NO
- 6.5 If no, describe any arrangements or mechanisms employed by the reporting entity to supplement its catastrophe reinsurance program or to hedge its exposure to uninsured catastrophic loss
- 7.1 Has the reporting entity reinsured any risk with any other entity under a quota share reinsurance contract that includes a provision that would limit the reinsurer's losses below the stated quota share percentage (e.g., a deductible, a loss ratio corridor, a loss cap, an aggregate limit or any similar provisions)? YES NO
- 7.2 If yes, indicate the number of reinsurance contracts containing such provisions. 0
- 7.3 If yes, does the amount of reinsurance credit taken reflect the reduction in quota share coverage caused by any applicable limiting provision(s)? YES NO
- 8.1 Has this reporting entity reinsured any risk with any other entity and agreed to release such entity from liability, in whole or in part, from any loss that may occur on this risk, or portion thereof, reinsured? YES NO
- 8.2 If yes, give full information
- 9.1 Has the reporting entity ceded any risk under any reinsurance contract (or under multiple contracts with the same reinsurer or its affiliates) for which during the period covered by the statement: (i) it recorded a positive or negative underwriting result greater than 5% of prior year-end surplus as regards policyholders or it reported calendar year written premium ceded or year-end loss and loss expense reserves ceded greater than 5% of prior year-end surplus as regards policyholders; (ii) it accounted for that contract as reinsurance and not as a deposit; and (iii) the contract(s) contain one or more of the following features or other features that would have similar results:
 (a) A contract term longer than two years and the contract is noncancellable by the reporting entity during the contract term;
 (b) A limited or conditional cancellation provision under which cancellation triggers an obligation by the reporting entity, or an affiliate of the reporting entity, to enter into a new reinsurance contract with the reinsurer, or an affiliate of the reinsurer;
 (c) Aggregate stop loss reinsurance coverage;
 (d) A unilateral right by either party (or both parties) to commute the reinsurance contract, whether conditional or not, except for such provisions which are only triggered by a decline in the credit status of the other party;
 (e) A provision permitting reporting of losses, or payment of losses, less frequently than on a quarterly basis (unless there is no activity during the period); or
 (f) Payment schedule, accumulating retentions from multiple years or any features inherently designed to delay timing of the reimbursement to the ceding entity. YES NO
- 9.2 Has the reporting entity during the period covered by the statement ceded any risk under any reinsurance contract (or under multiple contracts with the same reinsurer or its affiliates), for which, during the period covered by the statement, it recorded a positive or negative underwriting result greater than 5% of prior year-end surplus as regards policyholders or it reported calendar year written premium ceded or year-end loss and loss expense reserves ceded greater than 5% of prior year-end surplus as regards policyholders; excluding cessions to approved pooling arrangements or to captive insurance companies that are directly or indirectly controlling, controlled by, or under common control with (i) one or more unaffiliated policyholders of the reporting entity, or (ii) an association of which one or more unaffiliated policyholders of the reporting entity is a member where:
 (a) The written premium ceded to the reinsurer by the reporting entity or its affiliates represents fifty percent (50%) or more of the entire direct and assumed premium written by the reinsurer based on its most recently available financial statement; or
 (b) Twenty-five percent (25%) or more of the written premium ceded to the reinsurer has been retroceded back to the reporting entity or its affiliates in a separate reinsurance contract. YES NO
- 9.3 If yes to 9.1 or 9.2, please provide the following information in the Reinsurance Summary Supplemental Filing for General Interrogatory 9:
 (a) The aggregate financial statement impact gross of all such ceded reinsurance contracts on the balance sheet and statement of income;
 (b) A summary of the reinsurance contract terms and indicate whether it applies to the contracts meeting the criteria in 9.1 or 9.2; and
 (c) A brief discussion of management's principle objectives in entering into the reinsurance contract including the economic purpose to be achieved.
- 9.4 Except for transactions meeting the requirements of paragraph 30 of SSAP No. 62, Property and Casualty Reinsurance, has the reporting entity ceded any risk under any reinsurance contract (or multiple contracts with the same reinsurer or its affiliates) during the period covered by the financial statement, and either:
 (a) Accounted for that contract as reinsurance (either prospective or retroactive) under statutory accounting principles ("SAP") and as a deposit under generally accepted accounting principles ("GAAP"); or
 (b) Accounted for that contract as reinsurance under GAAP and as a deposit under SAP? YES NO

GENERAL INTERROGATORIES
(Continued)

PART 2 - PROPERTY & CASUALTY INTERROGATORIES

- 9.5 If yes to 9.4, explain in the Reinsurance Summary Supplemental Filing for General Interrogatory 9 (Section D) why the contract(s) is treated differently for GAAP and SAP.
- 9.6 The reporting entity is exempt from the Reinsurance Attestation Supplement under one or more of the following criteria:
- (a) The entity does not utilize reinsurance; or, YES [] NO [X]
- (b) The entity only engages in a 100% quota share contract with an affiliate and the affiliated or lead company has filed an attestation supplement; or, YES [] NO [X]
- (c) The entity has no external cessions and only participates in an intercompany pool and the affiliated or lead company has filed an attestation supplement. YES [] NO [X]
10. If the reporting entity has assumed risks from another entity, there should be charged on account of such reinsurances a reserve equal to that which the original entity would have been required to charge had it retained the risks. Has this been done? YES [] NO [] N/A [X]
- 11.1 Has the reporting entity guaranteed policies issued by any other entity and now in force: YES [] NO [X]
- 11.2 If yes, give full information
- 12.1 If the reporting entity recorded accrued retrospective premiums on insurance contracts on Line 13.3 of the asset schedule, Page 2, state the amount of corresponding liabilities recorded for:
- | | | |
|---|----|---|
| 12.11 Unpaid losses | \$ | 0 |
| 12.12 Unpaid underwriting expenses (including loss adjustment expenses) | \$ | 0 |
- 12.2 Of the amount on Line 13.3, Page 2, state the amount that is secured by letters of credit, collateral and other funds? \$ 0
- 12.3 If the reporting entity underwrites commercial insurance risks, such as workers' compensation, are premium notes or promissory notes accepted from its insureds covering unpaid premiums and/or unpaid losses? YES [] NO [X] N/A []
- 12.4 If yes, provide the range of interest rates charged under such notes during the period covered by this statement:
- | | |
|------------|---------|
| 12.41 From | 0.000 % |
| 12.42 To | 0.000 % |
- 12.5 Are letters of credit or collateral and other funds received from insureds being utilized by the reporting entity to secure premium notes or promissory notes taken by a reporting entity, or to secure any of the reporting entity's reported direct unpaid loss reserves, including unpaid losses under loss deductible features of commercial policies? YES [] NO [X]
- 12.6 If yes, state the amount thereof at December 31 of current year:
- | | | |
|----------------------------------|----|---|
| 12.61 Letters of Credit | \$ | 0 |
| 12.62 Collateral and other funds | \$ | 0 |
- 13.1 Largest net aggregate amount insured in any one risk (excluding workers' compensation): \$ 0
- 13.2 Does any reinsurance contract considered in the calculation of this amount include an aggregate limit of recovery without also including a reinstatement provision? YES [X] NO []
- 13.3 State the number of reinsurance contracts (excluding individual facultative risk certificates, but including facultative programs, automatic facilities or facultative obligatory contracts) considered in the calculation of the amount. 1
- 14.1 Is the company a cedant in a multiple cedant reinsurance contract? YES [] NO [X]
- 14.2 If yes, please describe the method of allocating and recording reinsurance among the cedants:
- 14.3 If the answer to 14.1 is yes, are the methods described in item 14.2 entirely contained in the respective multiple cedant reinsurance contracts? YES [] NO [X]
- 14.4 If the answer to 14.3 is no, are all the methods described in 14.2 entirely contained in written agreements? YES [] NO [X]
- 14.5 If the answer to 14.4 is no, please explain:
- 15.1 Has the reporting entity guaranteed any financed premium accounts? YES [] NO [X]
- 15.2 If yes, give full information
- 16.1 Does the reporting entity write any warranty business? YES [] NO [X]
- If yes, disclose the following information for each of the following types of warranty coverage:

	1	2	3	4	5
	Direct Losses Incurred	Direct Losses Unpaid	Direct Written Premium	Direct Premium Unearned	Direct Premium Earned
16.11 Home	\$ 0	\$ 0	\$ 0	\$ 0	\$ 0
16.12 Products	\$ 0	\$ 0	\$ 0	\$ 0	\$ 0
16.13 Automobile	\$ 0	\$ 0	\$ 0	\$ 0	\$ 0
16.14 Other*	\$ 0	\$ 0	\$ 0	\$ 0	\$ 0

* Disclose type of coverage: _____

GENERAL INTERROGATORIES
(Continued)

PART 2 - PROPERTY & CASUALTY INTERROGATORIES

17.1 Does the reporting entity include amounts recoverable on unauthorized reinsurance in Schedule F - Part 3 that it excludes from Schedule F - Part 5. YES [] NO [X]
 Incurred but not reported losses on contracts not in force prior to July 1, 1984 and not subsequently renewed are exempt from inclusion in Schedule F - Part 5. Provide the following information for this exemption:

17.11	Gross amount of unauthorized reinsurance in Schedule F - Part 3 excluded from Schedule F - Part 5	\$	<u>0</u>
17.12	Unfunded portion of Interrogatory 17.11	\$	<u>0</u>
17.13	Paid losses and loss adjustment expenses portion of Interrogatory 17.11	\$	<u>0</u>
17.14	Case reserves portion of Interrogatory 17.11	\$	<u>0</u>
17.15	Incurred but not reported portion of Interrogatory 17.11	\$	<u>0</u>
17.16	Unearned premium portion of Interrogatory 17.11	\$	<u>0</u>
17.17	Contingent commission portion of Interrogatory 17.11	\$	<u>0</u>

Provide the following information for all other amounts included in Schedule F - Part 3 and excluded from Schedule F - Part 5, not included above.

17.18	Gross amount of unauthorized reinsurance in Schedule F - Part 3 excluded from Schedule F - Part 5	\$	<u>0</u>
17.19	Unfunded portion of Interrogatory 17.18	\$	<u>0</u>
17.20	Paid losses and loss adjustment expenses portion of Interrogatory 17.18	\$	<u>0</u>
17.21	Case reserves portion of Interrogatory 17.18	\$	<u>0</u>
17.22	Incurred but not reported portion of Interrogatory 17.18	\$	<u>0</u>
17.23	Unearned premium portion of Interrogatory 17.18	\$	<u>0</u>
17.24	Contingent commission portion of Interrogatory 17.18	\$	<u>0</u>

FIVE-YEAR HISTORICAL DATA

Show amounts in whole dollars only, no cents; show percentages to one decimal place, i.e., 17.6.

	1 2007	2 2006	3 2005	4 2004	5 2003
Gross Premiums Written (Page 8, Part 1B, Cols. 1, 2 & 3)					
1. Liability lines (Lines 11.1, 11.2, 16, 17.1, 17.2, 18.1, 18.2, 19.1, 19.2 & 19.3, 19.4)	(400)	(4,566)	(302,064)	41,936,717	107,045,977
2. Property lines (Lines 1, 2, 9, 12, 21 & 26)	(598)	(4,859)	(199,867)	27,697,639	68,807,725
3. Property and liability combined lines (Lines 3, 4, 5, 8, 22 & 27)				111,902	518,236
4. All other lines (Lines 6, 10, 13, 14, 15, 23, 24, 28, 29 & 33)					
5. Nonproportional reinsurance lines (Lines 30, 31 & 32)					
6. Total (Line 34)	(998)	(9,425)	(501,931)	69,746,258	176,371,938
Net Premiums Written (Page 8, Part 1B, Col. 6)					
7. Liability lines (Lines 11.1, 11.2, 16, 17.1, 17.2, 18.1, 18.2, 19.1, 19.2 & 19.3, 19.4)					
8. Property lines (Lines 1, 2, 9, 12, 21 & 26)					
9. Property and liability combined lines (Lines 3, 4, 5, 8, 22 & 27)					
10. All other lines (Lines 6, 10, 13, 14, 15, 23, 24, 28, 29 & 33)					
11. Nonproportional reinsurance lines (Lines 30, 31 & 32)					
12. Total (Line 34)					
Statement of Income (Page 4)					
13. Net underwriting gain (loss) (Line 8)	9,471	(8,805)	(406,202)	(358,117)	
14. Net investment gain (loss) (Line 11)	375,299	603,510	951,963	656,205	791,437
15. Total other income (Line 15)	(3,048)		(652)	(7)	29,202
16. Dividends to policyholders (Line 17)					
17. Federal and foreign income taxes incurred (Line 19)	208,905	193,578	89,527	36,468	166,690
18. Net income (Line 20)	172,817	401,127	455,582	261,613	653,949
Balance Sheet Lines (Pages 2 and 3)					
19. Total admitted assets excluding protected cell business (Page 2, Line 24, Col. 3)	9,917,009	15,508,853	21,591,181	28,325,261	39,813,586
20. Premiums and considerations (Page 2, Col. 3)					
20.1 In course of collection (Line 13.1)					1,599,340
20.2 Deferred and not yet due (Line 13.2)					16,221,237
20.3 Accrued retrospective premiums (Line 13.3)					
21. Total liabilities excluding protected cell business (Page 3, Line 24)	3,169,191	10,107,503	6,765,308	13,950,458	25,561,796
22. Losses (Page 3, Line 1)	754,636	754,868	757,213	358,078	
23. Loss adjustment expenses (Page 3, Line 3)		10,000			
24. Unearned premiums (Page 3, Line 9)					
25. Capital paid up (Page 3, Lines 28 & 29)	3,500,000	3,500,000	3,500,000	3,500,000	3,500,000
26. Surplus as regards policyholders (Page 3, Line 35)	6,747,818	5,401,350	14,825,873	14,374,803	14,251,790
Cash Flow (Page 5)					
27. Net cash from operations (Line 11)	1,319,013	(2,729,844)	5,027,648	(3,629,188)	132,248
Risk-Based Capital Analysis					
28. Total adjusted capital	6,747,818	5,401,350	14,825,873	14,374,803	14,251,790
29. Authorized control level risk-based capital	102,862	95,817	196,759	130,168	119,981
Percentage Distribution of Cash, Cash Equivalents and Invested Assets (Page 2, Col. 3) (Item divided by Page 2, Line 10, Col. 3) x 100.0					
30. Bonds (Line 1)	81.1	68.8	79.1	99.1	76.4
31. Stocks (Lines 2.1 & 2.2)					
32. Mortgage loans on real estate (Lines 3.1 and 3.2)					
33. Real estate (Lines 4.1, 4.2 & 4.3)					
34. Cash, cash equivalents and short-term investments (Line 5)	18.9	31.2	20.9	0.9	23.6
35. Contract loans (Line 6)					
36. Other invested assets (Line 7)					
37. Receivables for securities (Line 8)					
38. Aggregate write-ins for invested assets (Line 9)					
39. Cash, cash equivalents and invested assets (Line 10)	100.0	100.0	100.0	100.0	100.0
Investments in Parent, Subsidiaries and Affiliates					
40. Affiliated bonds, (Sch. D, Summary, Line 25, Col. 1)					
41. Affiliated preferred stocks (Sch. D, Summary, Line 39, Col. 1)					
42. Affiliated common stocks (Sch. D, Summary, Line 53, Col. 1)					
43. Affiliated short-term investments (subtotals included in Schedule DA, Part 2, Col. 5, Line 7)					
44. Affiliated mortgage loans on real estate					
45. All other affiliated					
46. Total of above Lines 40 to 45					
47. Percentage of investments in parent, subsidiaries and affiliates to surplus as regards policyholders (Line 46 above divided by Page 3, Col. 1, Line 35 x 100.0)					

FIVE-YEAR HISTORICAL DATA

(Continued)

	1 2007	2 2006	3 2005	4 2004	5 2003
Capital and Surplus Accounts (Page 4)					
48. Net unrealized capital gains (losses) (Line 24)					
49. Dividends to stockholders (Line 35)		(7,337,632)			
50. Change in surplus as regards policyholders for the year (Line 38)	1,346,468	(9,424,523)	451,070	123,013	543,271
Gross Losses Paid (Page 9, Part 2, Cols. 1 & 2)					
51. Liability lines (Lines 11.1, 11.2, 16, 17.1, 17.2, 18.1, 18.2, 19.1, 19.2 & 19.3, 19.4)	8,259,098	19,911,580	24,446,087	56,817,627	55,443,862
52. Property lines (Lines 1, 2, 9, 12, 21 & 26)	(27,130)	(116,807)	1,055,321	22,173,140	40,222,809
53. Property and liability combined lines (Lines 3, 4, 5, 8, 22 & 27)	3,934	36,500	3,997	309,832	818,777
54. All other lines (Lines 6, 10, 13, 14, 15, 23, 24, 28, 29 & 33)					
55. Nonproportional reinsurance lines (Lines 30, 31 & 32)					
56. Total (Line 34)	8,235,902	19,831,273	25,505,405	79,300,599	96,485,448
Net Losses Paid (Page 9, Part 2, Col. 4)					
57. Liability lines (Lines 11.1, 11.2, 16, 17.1, 17.2, 18.1, 18.2, 19.1, 19.2 & 19.3, 19.4)	232	1,123	7,040		
58. Property lines (Lines 1, 2, 9, 12, 21 & 26)					
59. Property and liability combined lines (Lines 3, 4, 5, 8, 22 & 27)					
60. All other lines (Lines 6, 10, 13, 14, 15, 23, 24, 28, 29 & 33)					
61. Nonproportional reinsurance lines (Lines 30, 31 & 32)					
62. Total (Line 34)	232	1,123	7,040		
Operating Percentages (Page 4) (Item divided by Page 4, Line 1) x 100.0					
63. Premiums earned (Line 1)	100.0	100.0	100.0	100.0	100.0
64. Losses incurred (Line 2)					
65. Loss expenses incurred (Line 3)					
66. Other underwriting expenses incurred (Line 4)					
67. Net underwriting gain (loss) (Line 8)					
Other Percentages					
68. Other underwriting expenses to net premiums written (Page 4, Lines 4 + 5 - 15 divided by Page 8, Part 1B, Col. 6, Line 34 x 100.0)					
69. Losses and loss expenses incurred to premiums earned (Page 4, Lines 2 + 3 divided by Page 4, Line 1 x 100.0)					
70. Net premiums written to policyholders' surplus (Page 8, Part 1B, Col. 6, Line 34 divided by Page 3, Line 35, Col. 1 x 100.0)					
One Year Loss Development (000 omitted)					
71. Development in estimated losses and loss expenses incurred prior to current year (Schedule P, Part 2 - Summary, Line 12, Col. 11)			405	358	
72. Percent of development of losses and loss expenses incurred to policyholders' surplus of prior year end (Line 71 above divided by Page 4, Line 21, Col. 1 x 100.0)			2.8	2.5	
Two Year Loss Development (000 omitted)					
73. Development in estimated losses and loss expenses incurred 2 years before the current year and prior year (Schedule P, Part 2 - Summary, Line 12, Col. 12)		405	763	358	
74. Percent of development of losses and loss expenses incurred to reported policyholders' surplus of second prior year end (Line 73 above divided by Page 4, Line 21, Col. 2 x 100.0)		2.8	5.4	2.6	

SCHEDULE D - SUMMARY BY COUNTRY
Long-Term Bonds and Stocks OWNED December 31 of Current Year

Description		1	2	3	4
		Book/Adjusted Carrying Value	Fair Value	Actual Cost	Par Value of Bonds
BONDS Governments (Including all obligations guaranteed by governments)	1. United States	7,405,364	7,537,585	7,400,121	7,450,000
	2. Canada				
	3. Other Countries				
	4. Totals	7,405,364	7,537,585	7,400,121	7,450,000
States, Territories and Possessions (Direct and guaranteed)	5. United States				
	6. Canada				
	7. Other Countries				
	8. Totals				
Political Subdivisions of States, Territories and Possessions (Direct and guaranteed)	9. United States				
	10. Canada				
	11. Other Countries				
	12. Totals				
Special revenue and special assessment obligations and all non-guaranteed obligations of agencies and authorities of governments and their political subdivisions	13. United States				
	14. Canada				
	15. Other Countries				
	16. Totals				
Public Utilities (unaffiliated)	17. United States				
	18. Canada				
	19. Other Countries				
	20. Totals				
Industrial and Miscellaneous and Credit Tenant Loans (unaffiliated)	21. United States				
	22. Canada				
	23. Other Countries				
	24. Totals				
Parent, Subsidiaries and Affiliates	25. Totals				
	26. Total Bonds	7,405,364	7,537,585	7,400,121	7,450,000
PREFERRED STOCKS Public Utilities (unaffiliated)	27. United States				
	28. Canada				
	29. Other Countries				
	30. Totals				
Banks, Trust and Insurance Companies (unaffiliated)	31. United States				
	32. Canada				
	33. Other Countries				
	34. Totals				
Industrial and Miscellaneous (unaffiliated)	35. United States				
	36. Canada				
	37. Other Countries				
	38. Totals				
Parent, Subsidiaries and Affiliates	39. Totals				
	40. Total Preferred Stocks				
COMMON STOCKS Public Utilities (unaffiliated)	41. United States				
	42. Canada				
	43. Other Countries				
	44. Totals				
Banks, Trust and Insurance Companies (unaffiliated)	45. United States				
	46. Canada				
	47. Other Countries				
	48. Totals				
Industrial and Miscellaneous (unaffiliated)	49. United States				
	50. Canada				
	51. Other Countries				
	52. Totals				
Parent, Subsidiaries and Affiliates	53. Totals				
	54. Total Common Stocks				
	55. Total Stocks				
	56. Total Bonds and Stocks	7,405,364	7,537,585	7,400,121	

SCHEDULE D - VERIFICATION BETWEEN YEARS
Bonds and Stocks

1. Book/adjusted carrying value of bonds and stocks, prior year	9,195,093	7. Amortization of premium	4,178
2. Cost of bonds and stocks acquired, Column 7, Part 3	_____	8. Foreign Exchange Adjustment:	
3. Accrual of discount	14,117	8.1 Column 15, Part 1	_____
4. Increase (decrease) by adjustment:		8.2 Column 19, Part 2, Section 1	_____
4.1 Columns 12 - 14, Part 1	_____	8.3 Column 16, Part 2, Section 2	_____
4.2 Column 15 - 17, Part 2, Section 1	_____	8.4 Column 15, Part 4	_____
4.3 Column 15, Part 2, Section 2	_____	9. Book/adjusted carrying value at end of current period	7,405,364
4.4 Column 11 - 13, Part 4	_____	10. Total valuation allowance	_____
5. Total gain (loss), Column 19, Part 4	(9,043)	11. Subtotal (Lines 9 plus 10)	7,405,364
6. Deduct consideration for bonds and stocks disposed of Column 7, Part 4	1,790,625	12. Total nonadmitted amounts	_____
		13. Statement value of bonds and stocks, current period	7,405,364

SCHEDULE P-ANALYSIS OF LOSSES AND LOSS EXPENSES

SCHEDULE P-PART 1-SUMMARY

(\$000 omitted)

Years in Which Premiums Were Earned and Losses Were Incurred	Premiums Earned			Loss and Loss Expense Payments							12 Number of Claims Reported - Direct and Assumed	
	1 Direct and Assumed	2 Ceded	3 Net (Cols. 1 - 2)	Loss Payments		Defense and Cost Containment Payments		Adjusting and Other Payments		10 Salvage and Subrogation Received		11 Total Net Paid (Cols. 4 - 5 + 6 - 7 + 8 - 9)
				4 Direct and Assumed	5 Ceded	6 Direct and Assumed	7 Ceded	8 Direct and Assumed	9 Ceded			
1. Prior	X X X	X X X	X X X	43	45	2	1	1	1		(1)	X X X
2. 1998	11,900	11,900		6,308	6,308	70	70	977	977			X X X
3. 1999	12,797	12,797		9,238	9,238	157	157	1,592	1,592			X X X
4. 2000	28,318	28,318		21,754	21,754	402	402	3,725	3,725			X X X
5. 2001	63,402	63,402		44,594	44,585	857	857	8,891	8,891		9	X X X
6. 2002	115,667	115,667		89,399	89,399	2,151	2,151	15,909	15,909			X X X
7. 2003	171,222	171,222		117,372	117,372	3,407	3,407	13,067	13,067			X X X
8. 2004	104,247	104,247		58,499	58,499	2,755	2,755	240	240			X X X
9. 2005	5,937	5,937		2,446	2,446	143	143	118	118			X X X
10. 2006	(8)	(8)		7	7	1	1	73	73			X X X
11. 2007	(1)	(1)						39	39			X X X
12. Totals	X X X	X X X	X X X	349,660	349,653	9,945	9,944	44,632	44,632		8	X X X

	Losses Unpaid				Defense and Cost Containment Unpaid				Adjusting and Other Unpaid		23 Salvage and Subrogation Anticipated	24 Total Net Losses and Expenses Unpaid	25 Number of Claims Outstanding Direct and Assumed
	Case Basis		Bulk + IBNR		Case Basis		Bulk + IBNR		21 Direct and Assumed	22 Ceded			
	13 Direct and Assumed	14 Ceded	15 Direct and Assumed	16 Ceded	17 Direct and Assumed	18 Ceded	19 Direct and Assumed	20 Ceded					
1. Prior	346	111							338	338		235	X X X
2. 1998									8	8			X X X
3. 1999	50	50	1	1			2	2	11	11			X X X
4. 2000			1	1			11	11	20	20			X X X
5. 2001	1,228	708	1	1			37	37	33	33		520	X X X
6. 2002	779	779					148	148	54	54			X X X
7. 2003	2,921	2,921	411	411			509	509	143	143			X X X
8. 2004	2,148	2,148	32	32			426	426	316	316			X X X
9. 2005	291	291	(10)	(10)			20	20	686	686			X X X
10. 2006	126	126							1,329	1,329			X X X
11. 2007									3,140	3,140			X X X
12. Totals	7,889	7,134	436	436			1,153	1,153	6,078	6,078		755	X X X

	Total Losses and Loss Expenses Incurred			Loss and Loss Expense Percentage (Incurred / Premiums Earned)			Nontabular Discount		34 Inter-Company Pooling Participation Percentage	Net Balance Sheet Reserves After Discount	
	26 Direct and Assumed	27 Ceded	28 Net	29 Direct and Assumed	30 Ceded	31 Net	32 Loss	33 Loss Expense		35 Losses Unpaid	36 Loss Expenses Unpaid
1. Prior	X X X	X X X	X X X	X X X	X X X	X X X			X X X	235	
2. 1998	7,363	7,363		61.874	61.874						
3. 1999	11,051	11,051		86.356	86.356						
4. 2000	25,913	25,913		91.507	91.507						
5. 2001	55,641	55,112	529	87.759	86.925					520	
6. 2002	108,440	108,440		93.752	93.752						
7. 2003	137,830	137,830		80.498	80.498						
8. 2004	64,416	64,416		61.792	61.792						
9. 2005	3,694	3,694		62.220	62.220						
10. 2006	1,536	1,536		(19,200.000)	(19,200.000)						
11. 2007	3,179	3,179		(317,900.000)	(317,900.000)						
12. Totals	X X X	X X X	X X X	X X X	X X X	X X X			X X X	755	

Note: Parts 2 and 4 are gross of all discounting, including tabular discounting. Part 1 is gross of only nontabular discounting, which is reported in Columns 32 and 33 of Part 1. The tabular discount, if any, is reported in the Notes to Financial Statements which will reconcile Part 1 with Parts 2 and 4.

SCHEDULE P-PART 2-SUMMARY

Years in Which Losses Were Incurred	Incurred Net Losses and Defense and Cost Containment Expenses Reported At Year End (\$000 OMITTED)										DEVELOPMENT	
	1	2	3	4	5	6	7	8	9	10	11	12
	1998	1999	2000	2001	2002	2003	2004	2005	2006	2007	One Year	Two Year
1. Prior							358	235	234	234		(1)
2. 1998												
3. 1999	X X X											
4. 2000	X X X	X X X										
5. 2001	X X X	X X X	X X X					528	529	529		1
6. 2002	X X X	X X X	X X X	X X X								
7. 2003	X X X	X X X	X X X	X X X	X X X							
8. 2004	X X X	X X X	X X X	X X X	X X X	X X X						
9. 2005	X X X	X X X	X X X	X X X	X X X	X X X	X X X					
10. 2006	X X X	X X X	X X X	X X X	X X X	X X X	X X X	X X X				X X X
11. 2007	X X X	X X X	X X X	X X X	X X X	X X X	X X X	X X X	X X X		X X X	X X X
12. Totals												

SCHEDULE P-PART 3-SUMMARY

Years in Which Losses Were Incurred	Cumulative Paid Net Losses and Defense and Cost Containment Expenses Reported At Year End (\$000 OMITTED)										11 Number of Claims Closed With Loss Payment	12 Number of Claims Closed Without Loss Payment
	1	2	3	4	5	6	7	8	9	10		
	1998	1999	2000	2001	2002	2003	2004	2005	2006	2007		
1. Prior	000							1		(1)	X X X	X X X
2. 1998											X X X	X X X
3. 1999	X X X										X X X	X X X
4. 2000	X X X	X X X									X X X	X X X
5. 2001	X X X	X X X	X X X					5	7	9	X X X	X X X
6. 2002	X X X	X X X	X X X	X X X							X X X	X X X
7. 2003	X X X	X X X	X X X	X X X	X X X						X X X	X X X
8. 2004	X X X	X X X	X X X	X X X	X X X	X X X					X X X	X X X
9. 2005	X X X	X X X	X X X	X X X	X X X	X X X	X X X				X X X	X X X
10. 2006	X X X	X X X	X X X	X X X	X X X	X X X	X X X	X X X			X X X	X X X
11. 2007	X X X	X X X	X X X	X X X	X X X	X X X	X X X	X X X	X X X		X X X	X X X

SCHEDULE P-PART 4-SUMMARY

Years in Which Losses Were Incurred	Bulk and IBNR Reserves On Net Losses and Defense and Cost Containment Expenses Reported At Year End (\$000 OMITTED)											
	1	2	3	4	5	6	7	8	9	10		
	1998	1999	2000	2001	2002	2003	2004	2005	2006	2007		
1. Prior												
2. 1998												
3. 1999	X X X											
4. 2000	X X X	X X X										
5. 2001	X X X	X X X	X X X									
6. 2002	X X X	X X X	X X X	X X X								
7. 2003	X X X	X X X	X X X	X X X	X X X							
8. 2004	X X X	X X X	X X X	X X X	X X X	X X X						
9. 2005	X X X	X X X	X X X	X X X	X X X	X X X	X X X					
10. 2006	X X X	X X X	X X X	X X X	X X X	X X X	X X X	X X X				
11. 2007	X X X	X X X	X X X	X X X	X X X	X X X	X X X	X X X	X X X		X X X	

NONE

SCHEDULE T - EXHIBIT OF PREMIUMS WRITTEN
Allocated by States and Territories

States, Etc.	1 Is Insurer Licensed? (Yes or No)	Gross Premiums, Including Policy and Membership Fees Less Return Premiums and Premiums on Policies Not Taken		4 Dividends Paid or Credited to Policyholders on Direct Business	5 Direct Losses Paid (Deducting Salvage)	6 Direct Losses Incurred	7 Direct Losses Unpaid	8 Finance and Service Charges Not Included in Premiums	9 Direct Premium Written for Federal Purchasing Groups (Included in Col. 2)
		2 Direct Premiums Written	3 Direct Premiums Earned						
1. Alabama	AL	YES				(25)			
2. Alaska	AK	NO							
3. Arizona	AZ	YES	(998)	(998)	112,711	81,639	521,827	(3)	
4. Arkansas	AR	YES				(23)			
5. California	CA	YES				(4)	1		
6. Colorado	CO	YES				(177)	2,830		
7. Connecticut	CT	YES			167,373	149,682	366,566		
8. Delaware	DE	YES				(244)	50		
9. Dist. Columbia	DC	YES				(2)			
10. Florida	FL	YES			1,526,505	770,056	492,987		
11. Georgia	GA	YES			(50)	(458)	4,872		
12. Hawaii	HI	NO							
13. Idaho	ID	YES			49,500	(3,628)	15		
14. Illinois	IL	YES			411,277	14,076	161,051		
15. Indiana	IN	YES			153,016	(34,833)	755,832		
16. Iowa	IA	YES				(120)	16		
17. Kansas	KS	YES				(124)	24		
18. Kentucky	KY	YES			15,246	(9,607)	30,550		
19. Louisiana	LA	YES				(114,538)	109,647		
20. Maine	ME	YES				(112)	20		
21. Maryland	MD	YES				(13)	1		
22. Massachusetts	MA	NO							
23. Michigan	MI	YES			44,223	(5,481)	51,885		
24. Minnesota	MN	YES			133,486	9,540	34,720		
25. Mississippi	MS	YES				(63)			
26. Missouri	MO	YES				(198)	28		
27. Montana	MT	YES				(52)			
28. Nebraska	NE	YES				(19)			
29. Nevada	NV	YES			(1,250)	124,782	399,900		
30. New Hampshire	NH	YES				(585)	86		
31. New Jersey	NJ	NO							
32. New Mexico	NM	YES				(108)	22		
33. New York	NY	YES			813,577	(267,241)	865,528		
34. No. Carolina	NC	YES							
35. No. Dakota	ND	YES				(7)	1		
36. Ohio	OH	YES			46,352	(13,746)	36,844		
37. Oklahoma	OK	YES			196	(14,501)	25,604		
38. Oregon	OR	YES				(177)	32		
39. Pennsylvania	PA	YES			4,202,973	1,689,381	4,261,123		
40. Rhode Island	RI	YES			225,000	98,517	15,645		
41. So. Carolina	SC	YES			400	(149)	72		
42. So. Dakota	SD	YES				(34)			
43. Tennessee	TN	YES				(118)	12		
44. Texas	TX	YES			3,934	(12,603)	3,238		
45. Utah	UT	YES				(113)	20		
46. Vermont	VT	YES				(37)	6		
47. Virginia	VA	YES			18,135	2,667	10,587		
48. Washington	WA	YES			58,713	33,068	141		
49. West Virginia	WV	YES				(384)	68		
50. Wisconsin	WI	YES			254,587	294,385	172,414		
51. Wyoming	WY	YES				(9)			
52. American Samoa	AS	NO							
53. Guam	GU	NO							
54. Puerto Rico	PR	NO							
55. U.S. Virgin Islands	VI	NO							
56. Northern Mariana Islands	MP	NO							
57. Canada	CN	NO							
58. Aggregate other alien	OT	X X X							
59. Totals	(a)	47	(998)	(998)	8,235,904	2,788,260	8,324,265	(3)	

DETAILS OF WRITE-INS									
5801.	X X X								
5802.	X X X								
5803.	X X X								
5898. Summary of remaining write-ins for Line 58 from overflow page	X X X								
5899. Totals (Lines 5801 through 5803 + 5898) (Line 58 above)	X X X								

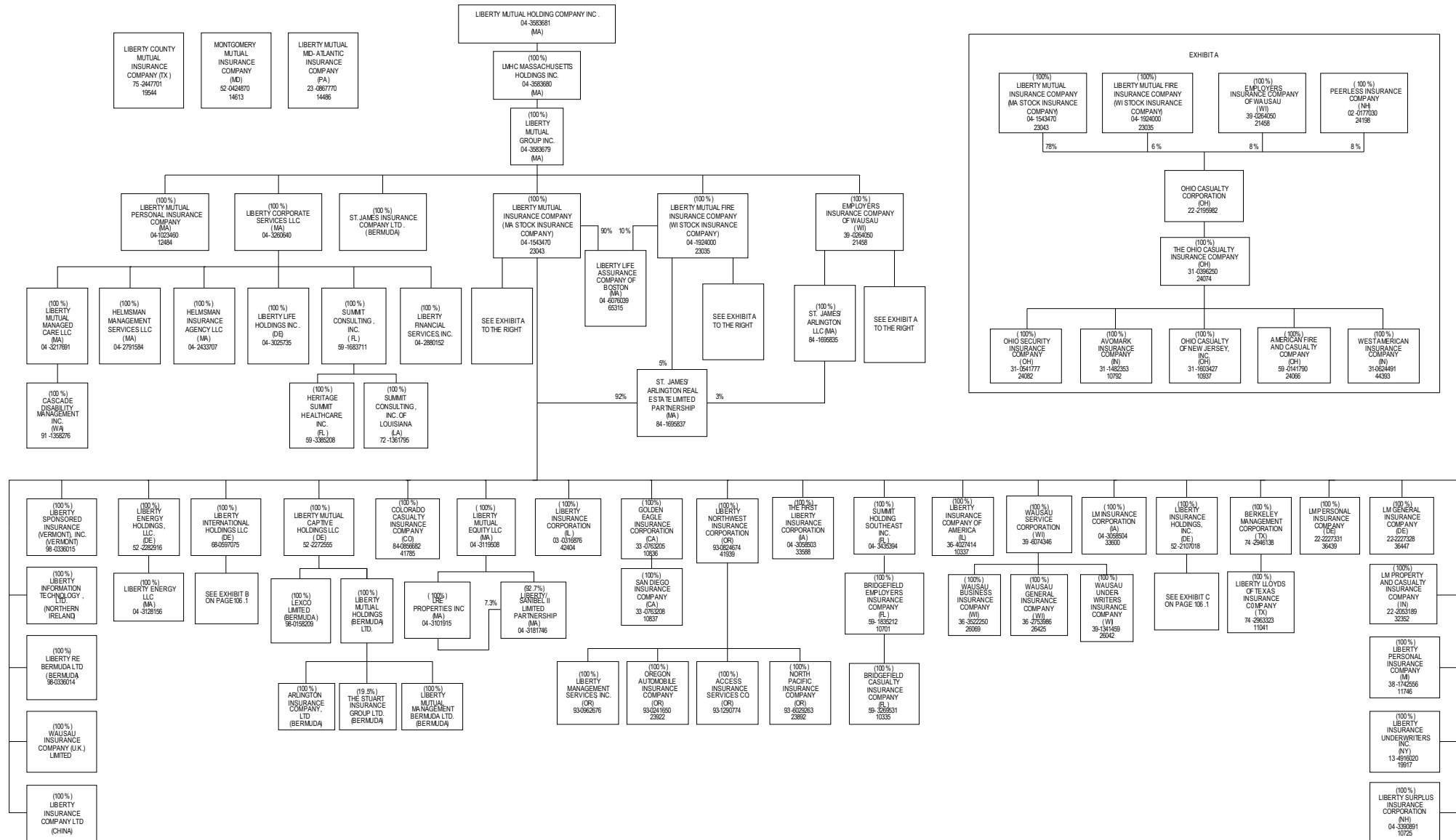
Explanation of basis of allocation of premiums by states, etc.

- *Location of coverage - Fire, Allied Lines, Homeowners Multi Peril, Commercial Multi Peril, Earthquake, Boiler and Machinery
- *States of Jurisdiction under which payrolls and resulting premiums are developed - Worker's Compensation
- *Location of Principal place of garaging of each individual car - Auto Liability, Auto Physical Damage
- *Principal Location of business or location of coverage - Liability other than Auto, Fidelity
- *Point of origin of shipment or principal location of assured - Inland Marine
- *State in which employees regularly work - Group Accident and Health
- *Location of Court - Surety
- *Address of Assured - Other Accident and Health
- *Location of Properties covered - Burglary and Theft
- *Principal Location of Assured - Ocean Marine, Credit
- *Primary residence of Assured - Aircraft (all perils)

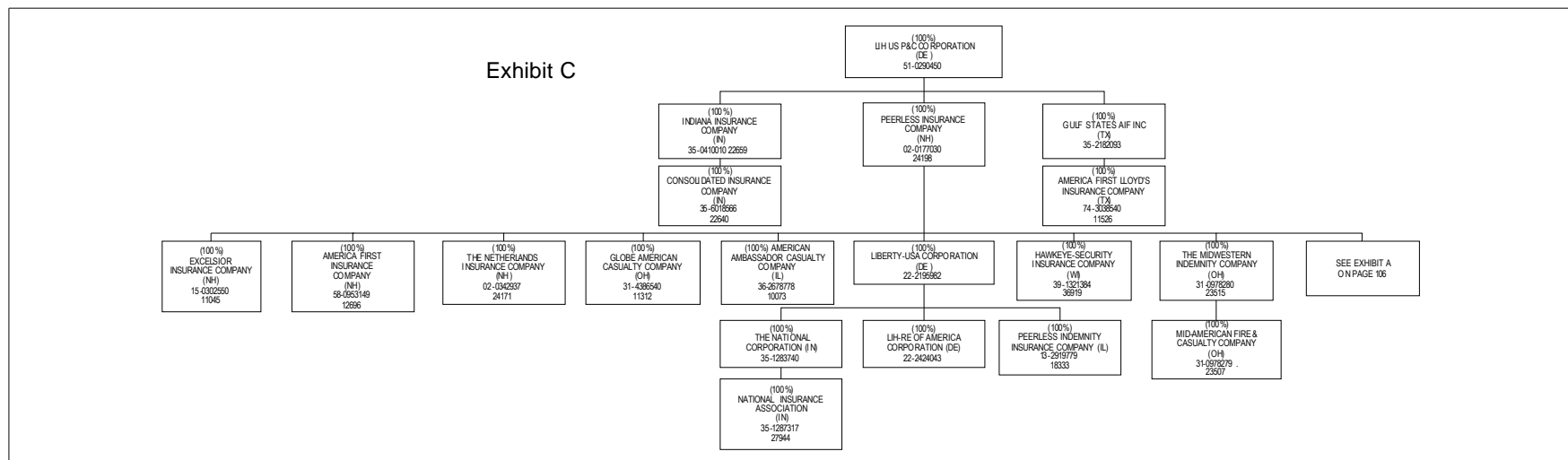
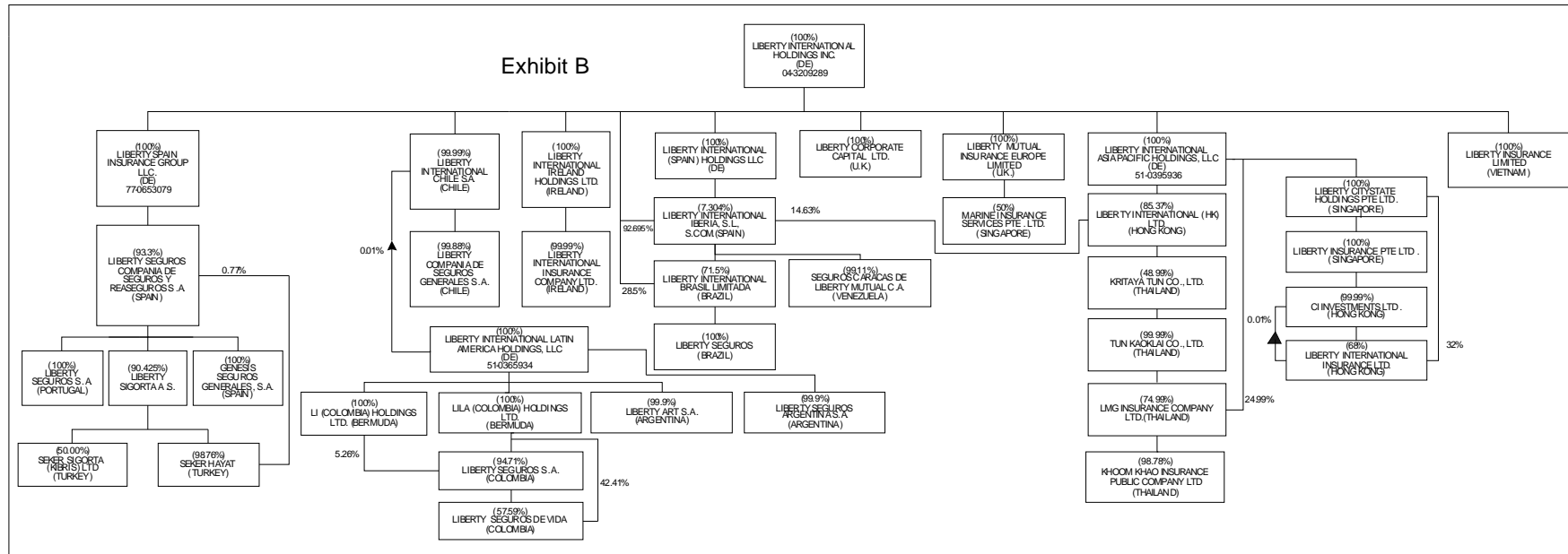
(a) Insert the number of yes responses except for Canada and Other Alien.

SCHEDULE Y - INFORMATION CONCERNING ACTIVITIES OF INSURER MEMBERS OF A HOLDING COMPANY GROUP

PART 1 - ORGANIZATIONAL CHART



SCHEDULE Y - INFORMATION CONCERNING ACTIVITIES OF INSURER MEMBERS OF A HOLDING COMPANY GROUP
PART 1 - ORGANIZATIONAL CHART



OVERFLOW PAGE FOR WRITE-INS

ALPHABETICAL INDEX TO PROPERTY AND CASUALTY ANNUAL STATEMENT

Assets	2	Schedule DB - Part D - Section 3	E21
Cash Flow	5	Schedule DB - Part D - Verification Between Years	31
Exhibit of Capital Gains (Losses)	12	Schedule DB - Part E - Section 1	E22
Exhibit of Net Investment Income	12	Schedule DB - Part E - Verification	31
Exhibit of Nonadmitted Assets	13	Schedule DB - Part F - Section 1	32
Exhibit of Premiums and Losses (State Page)	20	Schedule DB - Part F - Section 2	33
Five-Year Historical Data	18	Schedule E - Part 1 - Cash	E23
General Interrogatories	16	Schedule E - Part 2 - Cash Equivalents	E24
Jurat Page	1	Schedule E - Part 3 - Special Deposits	E25
Liabilities, Surplus and Other Funds	3	Schedule F - Part 1	34
Notes To Financial Statements	14	Schedule F - Part 2	35
Overflow Page For Write-ins	109	Schedule F - Part 3	36
Schedule A - Part 1	E01	Schedule F - Part 4	37
Schedule A - Part 2	E02	Schedule F - Part 5	38
Schedule A - Part 3	E03	Schedule F - Part 6	39
Schedule A - Verification Between Years	21	Schedule F - Part 7	40
Schedule B - Part 1	E04	Schedule F - Part 8	41
Schedule B - Part 2	E05	Schedule H - Accident and Health Exhibit - Part 1	42
Schedule B - Verification Between Years	21	Schedule H - Part 5 - Health Claims	44
Schedule BA - Part 1	E06	Schedule H - Parts - 2, 3, and 4	43
Schedule BA - Part 2	E07	Schedule P - Part 1 - Analysis of Losses and Loss Expenses	45
Schedule BA - Verification Between Years	21	Schedule P - Part 1A - Homeowners/Farmowners	47
Schedule D - Part 1	E08	Schedule P - Part 1B - Private Passenger Auto Liability/Medical	48
Schedule D - Part 1A - Section 1	23	Schedule P - Part 1C - Commercial Auto/Truck Liability/Medical	49
Schedule D - Part 1A - Section 2	26	Schedule P - Part 1D - Workers' Compensation	50
Schedule D - Part 2 - Section 1	E09	Schedule P - Part 1E - Commercial Multiple Peril	51
Schedule D - Part 2 - Section 2	E10	Schedule P - Part 1F - Section 1 - Medical Malpractice - Occurrence	52
Schedule D - Part 3	E11	Schedule P - Part 1F - Section 2 - Medical Malpractice - Claims-Made	53
Schedule D - Part 4	E12	Schedule P - Part 1G - Spec. Liab. (Ocean, Marine, Aircr.(A.P.), Boiler & Mach.)	54
Schedule D - Part 5	E13	Schedule P - Part 1H - Section 1 - Other Liability - Occurrence	55
Schedule D - Part 6 - Section 1	E14	Schedule P - Part 1H - Section 2 - Other Liability - Claims-Made	56
Schedule D - Part 6 - Section 2	E14	Schedule P - Part 1I - Spec. Prop. (Fire, A.L., Inld. Ma., Earth., Burg. & Thft.)	57
Schedule D - Summary By Country	22	Schedule P - Part 1J - Auto Physical Damage	58
Schedule D - Verification Between Years	22	Schedule P - Part 1K - Fidelity/Surety	59
Schedule DA - Part 1	E15	Schedule P - Part 1L - Other (Including Credit, Accident and Health)	60
Schedule DA - Part 2 - Verification Between Years	29	Schedule P - Part 1M - International	61
Schedule DB - Part A - Section 1	E16	Schedule P - Part 1N - Reinsurance	62
Schedule DB - Part A - Section 2	E16	Schedule P - Part 1O - Reinsurance	63
Schedule DB - Part A - Section 3	E17	Schedule P - Part 1P - Reinsurance	64
Schedule DB - Part A - Verification Between Years	30	Schedule P - Part 1R - Section 1 - Products Liability - Occurrence	65
Schedule DB - Part B - Section 1	E17	Schedule P - Part 1R - Section 2 - Products Liability - Claims-Made	66
Schedule DB - Part B - Section 2	E18	Schedule P - Part 1S - Financial Guaranty/Mortgage Guaranty	67
Schedule DB - Part B - Section 3	E18	Schedule P - Part 2A - Homeowners/Farmowners	68
Schedule DB - Part B - Verification Between Years	30	Schedule P - Part 2B - Private Passenger Auto Liability/Medical	68
Schedule DB - Part C - Section 1	E19	Schedule P - Part 2C - Commercial Auto/Truck Liability/Medical	68
Schedule DB - Part C - Section 2	E19	Schedule P - Part 2D - Workers' Compensation	68
Schedule DB - Part C - Section 3	E20	Schedule P - Part 2E - Commercial Multiple Peril	68
Schedule DB - Part C - Verification Between Years	31	Schedule P - Part 2F - Section 1 - Medical Malpractice - Occurrence	69
Schedule DB - Part D - Section 1	E20	Schedule P - Part 2F - Section 2 - Medical Malpractice - Claims-Made	69
Schedule DB - Part D - Section 2	E21	Schedule P - Part 2G - Spec. Liab. (Ocean, Marine, Aircr.(A.P.), Boiler & Mach.)	69

ALPHABETICAL INDEX (Continued)

Schedule P - Part 2H - Section 1 - Other Liability - Occurrence	69	Schedule P - Part 4O - Reinsurance	81
Schedule P - Part 2H - Section 2 - Other Liability - Claims-Made	69	Schedule P - Part 4P - Reinsurance	81
Schedule P - Part 2I - Spec. Prop. (Fire, A.L., Inld. Ma., Earth., Burg. & Thft.)	70	Schedule P - Part 4R - Section 1 - Products Liability - Occurrence	82
Schedule P - Part 2J - Auto Physical Damage	70	Schedule P - Part 4R - Section 2 - Products Liability - Claims-Made	82
Schedule P - Part 2K - Fidelity, Surety	70	Schedule P - Part 4S - Financial Guaranty/Mortgage Guaranty	82
Schedule P - Part 2L - Other (Including Credit, Accident and Health)	70	Schedule P - Part 5A - Homeowners/Farmowners	83
Schedule P - Part 2M - International	70	Schedule P - Part 5B - Private Passenger Auto Liability/Medical	84
Schedule P - Part 2N - Reinsurance	71	Schedule P - Part 5C - Commercial Auto/Truck Liability/Medical	85
Schedule P - Part 2O - Reinsurance	71	Schedule P - Part 5D - Workers' Compensation	86
Schedule P - Part 2P - Reinsurance	71	Schedule P - Part 5E - Commercial Multiple Peril	87
Schedule P - Part 2R - Section 1 - Products Liability - Occurrence	72	Schedule P - Part 5F - Medical Malpractice - Claims-Made	89
Schedule P - Part 2R - Section 2 - Products Liability - Claims-Made	72	Schedule P - Part 5F - Medical Malpractice - Occurrence	88
Schedule P - Part 2S - Financial Guaranty/Mortgage Guaranty	72	Schedule P - Part 5H - Other Liability - Claims-Made	91
Schedule P - Part 3A - Homeowners/Farmowners	73	Schedule P - Part 5H - Other Liability - Occurrence	90
Schedule P - Part 3B - Private Passenger Auto Liability/Medical	73	Schedule P - Part 5R - Products Liability - Claims-Made	93
Schedule P - Part 3C - Commercial Auto/Truck Liability/Medical	73	Schedule P - Part 5R - Products Liability - Occurrence	92
Schedule P - Part 3D - Workers' Compensation	73	Schedule P - Part 6C - Commercial Auto/Truck Liability/Medical	94
Schedule P - Part 3E - Commercial Multiple Peril	73	Schedule P - Part 6D - Workers' Compensation	94
Schedule P - Part 3F - Section 1 - Medical Malpractice - Occurrence	74	Schedule P - Part 6E - Commercial Multiple Peril	95
Schedule P - Part 3F - Section 2 - Medical Malpractice - Claims-Made	74	Schedule P - Part 6H - Other Liability - Claims-Made	96
Schedule P - Part 3G - Spec. Liab. (Ocean, Marine, Aircr.(A.P.), Boiler & Mach.)	74	Schedule P - Part 6H - Other Liability - Occurrence	95
Schedule P - Part 3H - Section 1 - Other Liability - Occurrence	74	Schedule P - Part 6M - International	96
Schedule P - Part 3H - Section 2 - Other Liability - Claims-Made	74	Schedule P - Part 6N - Reinsurance	97
Schedule P - Part 3I - Spec. Prop. (Fire, A.L., Inld. Ma., Earth., Burg. & Thft.)	75	Schedule P - Part 6O - Reinsurance	97
Schedule P - Part 3J - Auto Physical Damage	75	Schedule P - Part 6R - Products Liability - Claims-Made	98
Schedule P - Part 3K - Fidelity/Surety	75	Schedule P - Part 6R - Products Liability - Occurrence	98
Schedule P - Part 3L - Other (Including Credit, Accident and Health)	75	Schedule P - Part 7A - Primary Loss Sensitive Contracts	99
Schedule P - Part 3M - International	75	Schedule P - Part 7B - Reinsurance Loss Sensitive Contracts	101
Schedule P - Part 3N - Reinsurance	76	Schedule P - Parts 2, 3 and 4 - Summary	46
Schedule P - Part 3O - Reinsurance	76	Schedule P Interrogatories	103
Schedule P - Part 3P - Reinsurance	76	Schedule T - Exhibit of Premiums Written	104
Schedule P - Part 3R - Section 1 - Products Liability - Occurrence	77	Schedule T - Part 2 - Interstate Compact	105
Schedule P - Part 3R - Section 2 - Products Liability - Claims-Made	77	Schedule Y - Info. Concerning Activities of Insurer Mmbrs. of a Holding Co. Grp.	106
Schedule P - Part 3S - Financial Guaranty/Mortgage Guaranty	77	Schedule Y - Part 2 - Summary of Insurer's Transactions With Any Affiliates	107
Schedule P - Part 4A - Homeowners/Farmowners	78	Statement of Income	4
Schedule P - Part 4B - Private Passenger Auto Liability/Medical	78	Summary Investment Schedule	15
Schedule P - Part 4C - Commercial Auto/Truck Liability/Medical	78	Underwriting and Investment Exhibit Part 1	6
Schedule P - Part 4D - Workers' Compensation	78	Underwriting and Investment Exhibit Part 1A	7
Schedule P - Part 4E - Commercial Multiple Peril	78	Underwriting and Investment Exhibit Part 1B	8
Schedule P - Part 4F - Section 1 - Medical Malpractice - Occurrence	79	Underwriting and Investment Exhibit Part 2	9
Schedule P - Part 4F - Section 2 - Medical Malpractice - Claims-Made	79	Underwriting and Investment Exhibit Part 2A	10
Schedule P - Part 4G - Spec. Liab. (Ocean, Marine, Aircr.(A.P.), Boiler & Mach.)	79	Underwriting and Investment Exhibit Part 3	11
Schedule P - Part 4H - Section 1 - Other Liability - Occurrence	79		
Schedule P - Part 4H - Section 2 - Other Liability - Claims-Made	79		
Schedule P - Part 4I - Spec. Prop. (Fire, A.L., Inld. Ma., Earth., Burg. & Thft.)	80		
Schedule P - Part 4J - Auto Physical Damage	80		
Schedule P - Part 4K - Fidelity/Surety	80		
Schedule P - Part 4L - Other (Including Credit, Accident and Health)	80		
Schedule P - Part 4M - International	80		
Schedule P - Part 4N - Reinsurance	81		