

ANNUAL STATEMENT

OF THE

IRONSHORE INDEMNITY INC.

of **HOFFMAN ESTATES**

STATE OF **ILLINOIS**

TO THE

Insurance Department

OF THE

FOR THE YEAR ENDED

December 31, 2020

PROPERTY AND CASUALTY

2020



23647202020100100

ANNUAL STATEMENT

For the Year Ended December 31, 2020
OF THE CONDITION AND AFFAIRS OF THE

Ironshore Indemnity Inc.

NAIC Group Code 0111 0111 NAIC Company Code 23647 Employer's ID Number 41-0121640
Organized under the Laws of Illinois, State of Domicile or Port of Entry IL
Country of Domicile USA
Incorporated/Organized August 1, 1919 Commenced Business October 11, 1919
Statutory Home Office 2815 Forbs Avenue, Suite 200 Hoffman Estates, IL, US 60192
Main Administrative Office 175 Berkeley Street Boston, MA, US 02116
Mail Address 175 Berkeley Street Boston, MA, US 02116
Primary Location of Books and Records 175 Berkeley Street Boston, MA, US 02116
Internet Web Site Address www.ironshore.com
Statutory Statement Contact Simone Thomas 617-357-9500 x41420
Statutory.Compliance@LibertyMutual.com 603-430-1653

OFFICERS

Chairman of the Board
Mark Charles Touhey

Table with 2 columns: Name, Title. Rows include Matthew Paul Dolan (President and Chief Executive Officer), Mark Charles Touhey (Executive Vice President and Secretary), Edward Jose Pena # (Executive Vice President and Treasurer).

VICE-PRESIDENTS

Table with 4 columns: Name, Title, Name, Title. Rows include Alison Brooke Erbig (Executive Vice President and Comptroller), James Francis Kelleher (EVP and Chief Legal Officer), Neeti Bhalla Johnson (EVP and Chief Investment Officer), Christopher Locke Peirce (EVP and Chief Financial Officer).

DIRECTORS OR TRUSTEES

Table with 4 columns: Name, Name, Name, Name. Rows include Matthew Paul Dolan, Julie Marie Haase, Sean Bulman McSweeney, Alison Brooke Erbig, Stephen Douglas Hylka #, Elizabeth Julia Morahan, Michael Joseph Fallon, Christopher Bradley Johnston #, Francis William Robinson, Jr., Stacie Ann Graham #, James Michael MacPhee, Mark Charles Touhey.

State of Massachusetts
County of Suffolk ss

The officers of this reporting entity being duly sworn, each depose and say that they are the described officers of said reporting entity, and that on the reporting period stated above, all of the herein described assets were the absolute property of the said reporting entity, free and clear from any liens or claims thereon, except as herein stated, and that this statement, together with related exhibits, schedules and explanations therein contained, annexed or referred to, is a full and true statement of all the assets and liabilities and of the condition and affairs of the said reporting entity as of the reporting period stated above, and of its income and deductions therefrom for the period ended, and have been completed in accordance with the NAIC Annual Statement Instructions and Accounting Practices and Procedures manual except to the extent that: (1) state law may differ; or, (2) that state rules or regulations require differences in reporting not related to accounting practices and procedures, according to the best of their information, knowledge and belief, respectively. Furthermore, the scope of this attestation by the described officers also includes the related corresponding electronic filing with the NAIC, when required, that is an exact copy (except for formatting differences due to electronic filing) of the enclosed statement. The electronic filing may be requested by various regulators in lieu of or in addition to the enclosed statement.

(Signature) Matthew Paul Dolan (Printed Name) 1. President and Chief Executive Officer
(Signature) Mark Charles Touhey (Printed Name) 2. Executive Vice President and Secretary
(Signature) Edward Jose Pena # (Printed Name) 3. Executive Vice President and Treasurer

Subscribed and sworn to (or affirmed) before me this on this 19th day of January, 2021, by

a. Is this an original filing? [X] Yes [] No
b. If no: 1. State the amendment number
2. Date filed
3. Number of pages attached

ASSETS

	Current Year			Prior Year
	1	2	3	4
	Assets	Nonadmitted Assets	Net Admitted Assets (Cols. 1 - 2)	Net Admitted Assets
1. Bonds (Schedule D)	117,164,139		117,164,139	111,933,652
2. Stocks (Schedule D):				
2.1 Preferred stocks				
2.2 Common stocks	246,000		246,000	299,400
3. Mortgage loans on real estate (Schedule B):				
3.1 First liens				
3.2 Other than first liens				
4. Real estate (Schedule A):				
4.1 Properties occupied by the company (less \$ 0 encumbrances)				
4.2 Properties held for the production of income (less \$ 0 encumbrances)				
4.3 Properties held for sale (less \$ 0 encumbrances)				
5. Cash (\$ (3,075,804), Schedule E - Part 1), cash equivalents (\$ 21,416,405, Schedule E - Part 2), and short-term investments (\$ 0, Schedule DA)	18,340,601		18,340,601	3,427,481
6. Contract loans (including \$ 0 premium notes)				
7. Derivatives (Schedule DB)				
8. Other invested assets (Schedule BA)				
9. Receivables for securities				
10. Securities lending reinvested collateral assets (Schedule DL)				
11. Aggregate write-ins for invested assets				
12. Subtotals, cash and invested assets (Lines 1 to 11)	135,750,740		135,750,740	115,660,533
13. Title plants less \$ 0 charged off (for Title insurers only)				
14. Investment income due and accrued	499,210		499,210	448,001
15. Premiums and considerations:				
15.1 Uncollected premiums and agents' balances in the course of collection				3,311,654
15.2 Deferred premiums, agents' balances and installments booked but deferred and not yet due (including \$ 0 earned but unbilled premiums)				
15.3 Accrued retrospective premiums (\$ 0) and contracts subject to redetermination (\$ 0)				
16. Reinsurance:				
16.1 Amounts recoverable from reinsurers	129,323,538		129,323,538	63,309,763
16.2 Funds held by or deposited with reinsured companies				
16.3 Other amounts receivable under reinsurance contracts				
17. Amounts receivable relating to uninsured plans				
18.1 Current federal and foreign income tax recoverable and interest thereon	1,347,973		1,347,973	370,335
18.2 Net deferred tax asset	2,632,000	2,327,597	304,403	458,315
19. Guaranty funds receivable or on deposit				
20. Electronic data processing equipment and software				
21. Furniture and equipment, including health care delivery assets (\$ 0)				
22. Net adjustment in assets and liabilities due to foreign exchange rates				
23. Receivables from parent, subsidiaries and affiliates	108,199,985		108,199,985	
24. Health care (\$ 0) and other amounts receivable				
25. Aggregate write-ins for other-than-invested assets	36,722,556	10,993,714	25,728,842	7,619,378
26. Total assets excluding Separate Accounts, Segregated Accounts and Protected Cell Accounts (Lines 12 to 25)	414,476,002	13,321,311	401,154,691	191,177,979
27. From Separate Accounts, Segregated Accounts and Protected Cell Accounts				
28. Total (Lines 26 and 27)	414,476,002	13,321,311	401,154,691	191,177,979

DETAILS OF WRITE-IN LINES				
1101.				
1102.				
1103.				
1198. Summary of remaining write-ins for Line 11 from overflow page				
1199. Totals (Lines 1101 through 1103 plus 1198) (Line 11 above)				
2501. Other assets	36,722,556	10,993,714	25,728,842	7,619,378
2502.				
2503.				
2598. Summary of remaining write-ins for Line 25 from overflow page				
2599. Totals (Lines 2501 through 2503 plus 2598) (Line 25 above)	36,722,556	10,993,714	25,728,842	7,619,378

LIABILITIES, SURPLUS AND OTHER FUNDS

	1	2
	Current Year	Prior Year
1. Losses (Part 2A, Line 35, Column 8)		
2. Reinsurance payable on paid losses and loss adjustment expenses (Schedule F, Part 1, Column 6)		
3. Loss adjustment expenses (Part 2A, Line 35, Column 9)		
4. Commissions payable, contingent commissions and other similar charges		
5. Other expenses (excluding taxes, licenses and fees)		
6. Taxes, licenses and fees (excluding federal and foreign income taxes)		
7.1 Current federal and foreign income taxes (including \$ 0 on realized capital gains (losses))		
7.2 Net deferred tax liability		
8. Borrowed money \$ 0 and interest thereon \$ 0		
9. Unearned premiums (Part 1A, Line 38, Column 5) (after deducting unearned premiums for ceded reinsurance of \$ 147,154,489 and including warranty reserves of \$ 0 and accrued accident and health experience rating refunds including \$ 0 for medical loss ratio rebate per the Public Health Service Act)		
10. Advance premium		
11. Dividends declared and unpaid:		
11.1 Stockholders		
11.2 Policyholders		
12. Ceded reinsurance premiums payable (net of ceding commissions)	20,320,198	40,370,542
13. Funds held by company under reinsurance treaties (Schedule F, Part 3, Column 20)		807,055
14. Amounts withheld or retained by company for account of others		
15. Remittances and items not allocated		
16. Provision for reinsurance (including \$ 0 certified) (Schedule F, Part 3 Column 78)	227,000	7,672,000
17. Net adjustments in assets and liabilities due to foreign exchange rates		
18. Drafts outstanding		
19. Payable to parent, subsidiaries and affiliates	279,264,541	53,141,630
20. Derivatives		
21. Payable for securities	566,034	
22. Payable for securities lending		
23. Liability for amounts held under uninsured plans		
24. Capital notes \$ 0 and interest thereon \$ 0		
25. Aggregate write-ins for liabilities	(9,657)	
26. Total liabilities excluding protected cell liabilities (Lines 1 through 25)	300,368,116	101,991,227
27. Protected cell liabilities		
28. Total liabilities (Lines 26 and 27)	300,368,116	101,991,227
29. Aggregate write-ins for special surplus funds		
30. Common capital stock	5,000,000	5,000,000
31. Preferred capital stock		
32. Aggregate write-ins for other-than-special surplus funds		
33. Surplus notes		
34. Gross paid in and contributed surplus	97,165,381	97,165,381
35. Unassigned funds (surplus)	(1,378,806)	(12,978,629)
36. Less treasury stock, at cost:		
36.1 0 shares common (value included in Line 30 \$ 0)		
36.2 0 shares preferred (value included in Line 31 \$ 0)		
37. Surplus as regards policyholders (Lines 29 to 35, less 36) (Page 4, Line 39)	100,786,575	89,186,752
38. Totals (Page 2, Line 28, Col. 3)	401,154,691	191,177,979

DETAILS OF WRITE-IN LINES		
2501. Other Liabilities	(9,657)	
2502.		
2503.		
2598. Summary of remaining write-ins for Line 25 from overflow page		
2599. Totals (Lines 2501 through 2503 plus 2598) (Line 25 above)	(9,657)	
2901.		
2902.		
2903.		
2998. Summary of remaining write-ins for Line 29 from overflow page		
2999. Totals (Lines 2901 through 2903 plus 2998) (Line 29 above)		
3201.		
3202.		
3203.		
3298. Summary of remaining write-ins for Line 32 from overflow page		
3299. Totals (Lines 3201 through 3203 plus 3298) (Line 32 above)		

STATEMENT OF INCOME

	1	2
	Current Year	Prior Year
UNDERWRITING INCOME		
1. Premiums earned (Part 1, Line 35, Column 4)		
DEDUCTIONS:		
2. Losses incurred (Part 2, Line 35, Column 7)		
3. Loss adjustment expenses incurred (Part 3, Line 25, Column 1)		
4. Other underwriting expenses incurred (Part 3, Line 25, Column 2)	(498,857)	(1,156,128)
5. Aggregate write-ins for underwriting deductions		
6. Total underwriting deductions (Lines 2 through 5)	(498,857)	(1,156,128)
7. Net income of protected cells		
8. Net underwriting gain (loss) (Line 1 minus Line 6 plus Line 7)	498,857	1,156,128
INVESTMENT INCOME		
9. Net investment income earned (Exhibit of Net Investment Income, Line 17)	2,883,688	3,528,157
10. Net realized capital gains (losses) less capital gains tax of \$ 203,666 (Exhibit of Capital Gains (Losses))	766,173	393,862
11. Net investment gain (loss) (Lines 9 + 10)	3,649,861	3,922,019
OTHER INCOME		
12. Net gain or (loss) from agents' or premium balances charged off (amount recovered \$ 0 amount charged off \$ 0)		
13. Finance and service charges not included in premiums		
14. Aggregate write-ins for miscellaneous income	195,978	(136,302)
15. Total other income (Lines 12 through 14)	195,978	(136,302)
16. Net income before dividends to policyholders, after capital gains tax and before all other federal and foreign income taxes (Lines 8 + 11 + 15)	4,344,696	4,941,845
17. Dividends to policyholders		
18. Net income, after dividends to policyholders, after capital gains tax and before all other federal and foreign income taxes (Line 16 minus Line 17)	4,344,696	4,941,845
19. Federal and foreign income taxes incurred	(231,666)	477,302
20. Net income (Line 18 minus Line 19) (to Line 22)	4,576,362	4,464,543
CAPITAL AND SURPLUS ACCOUNT		
21. Surplus as regards policyholders, December 31 prior year (Page 4, Line 39, Column 2)	89,186,752	88,422,957
22. Net income (from Line 20)	4,576,362	4,464,543
23. Net transfers (to) from Protected Cell accounts		
24. Change in net unrealized capital gains or (losses) less capital gains tax of \$ (56,202)	(211,425)	
25. Change in net unrealized foreign exchange capital gain (loss)		
26. Change in net deferred income tax	(656,202)	(361,000)
27. Change in nonadmitted assets (Exhibit of Nonadmitted Assets, Line 28, Col. 3)	446,088	335,349
28. Change in provision for reinsurance (Page 3, Line 16, Column 2 minus Column 1)	7,445,000	(3,675,097)
29. Change in surplus notes		
30. Surplus (contributed to) withdrawn from protected cells		
31. Cumulative effect of changes in accounting principles		
32. Capital changes:		
32.1 Paid in		
32.2 Transferred from surplus (Stock Dividend)		
32.3 Transferred to surplus		
33. Surplus adjustments:		
33.1 Paid in		
33.2 Transferred to capital (Stock Dividend)		
33.3 Transferred from capital		
34. Net remittances from or (to) Home Office		
35. Dividends to stockholders		
36. Change in treasury stock (Page 3, Lines 36.1 and 36.2, Column 2 minus Column 1)		
37. Aggregate write-ins for gains and losses in surplus		
38. Change in surplus as regards policyholders for the year (Lines 22 through 37)	11,599,823	763,795
39. Surplus as regards policyholders, December 31 current year (Lines 21 plus Line 38) (Page 3, Line 37)	100,786,575	89,186,752

DETAILS OF WRITE-IN LINES		
0501.		
0502.		
0503.		
0598. Summary of remaining write-ins for Line 05 from overflow page		
0599. Totals (Lines 0501 through 0503 plus 0598) (Line 05 above)		
1401. Other income (expense)	195,978	(136,302)
1402.		
1403.		
1498. Summary of remaining write-ins for Line 14 from overflow page		
1499. Totals (Lines 1401 through 1403 plus 1498) (Line 14 above)	195,978	(136,302)
3701.		
3702.		
3703.		
3798. Summary of remaining write-ins for Line 37 from overflow page		
3799. Totals (Lines 3701 through 3703 plus 3798) (Line 37 above)		

CASH FLOW

Cash from Operations	1 Current Year	2 Prior Year
1. Premiums collected net of reinsurance	(22,337,302)	7,149,317
2. Net investment income	2,879,340	3,331,802
3. Miscellaneous income	(610,368)	(134,571)
4. Total (Lines 1 through 3)	(20,068,330)	10,346,548
5. Benefit and loss related payments	66,013,776	28,642,709
6. Net transfers to Separate Accounts, Segregated Accounts and Protected Cell Accounts		
7. Commissions, expenses paid and aggregate write-ins for deductions	(498,857)	(1,156,128)
8. Dividends paid to policyholders		
9. Federal and foreign income taxes paid (recovered) net of \$ 0 tax on capital gains (losses)	949,638	845,723
10. Total (Lines 5 through 9)	66,464,557	28,332,304
11. Net cash from operations (Line 4 minus Line 10)	(86,532,887)	(17,985,756)
Cash from Investments		
12. Proceeds from investments sold, matured or repaid:		
12.1 Bonds	100,181,793	85,792,814
12.2 Stocks	53,400	
12.3 Mortgage loans		
12.4 Real estate		
12.5 Other invested assets		
12.6 Net gains or (losses) on cash, cash equivalents and short-term investments		
12.7 Miscellaneous proceeds		
12.8 Total investment proceeds (Lines 12.1 to 12.7)	100,235,193	85,792,814
13. Cost of investments acquired (long-term only):		
13.1 Bonds	104,756,950	86,755,366
13.2 Stocks		1,300
13.3 Mortgage loans		
13.4 Real estate		
13.5 Other invested assets		
13.6 Miscellaneous applications	(566,034)	1,702,355
13.7 Total investments acquired (Lines 13.1 to 13.6)	104,190,916	88,459,021
14. Net increase (decrease) in contract loans and premium notes		
15. Net cash from investments (Line 12.8 minus Line 13.7 minus Line 14)	(3,955,723)	(2,666,207)
Cash from Financing and Miscellaneous Sources		
16. Cash provided (applied):		
16.1 Surplus notes, capital notes		
16.2 Capital and paid in surplus, less treasury stock		
16.3 Borrowed funds		
16.4 Net deposits on deposit-type contracts and other insurance liabilities		
16.5 Dividends to stockholders		
16.6 Other cash provided (applied)	105,401,730	12,239,143
17. Net cash from financing and miscellaneous sources (Lines 16.1 to 16.4 minus Line 16.5 plus Line 16.6)	105,401,730	12,239,143
RECONCILIATION OF CASH, CASH EQUIVALENTS AND SHORT-TERM INVESTMENTS		
18. Net change in cash, cash equivalents and short-term investments (Line 11, plus Lines 15 and 17)	14,913,120	(8,412,820)
19. Cash, cash equivalents and short-term investments:		
19.1 Beginning of year	3,427,481	11,840,301
19.2 End of year (Line 18 plus Line 19.1)	18,340,601	3,427,481

Note: Supplemental disclosures of cash flow information for non-cash transactions:

20.0001	2- Net Investment Income	74,915	217,689
20.0002	12.1 - Proceeds from investments sold, matured or repaid - Bonds	2,195,357	375,471
20.0003	13.1 - Cost of Investment Acquired - Bonds	2,270,272	157,782
20.0004	16.6 Other Cash Provided (applied)		

UNDERWRITING AND INVESTMENT EXHIBIT

PART 1 – PREMIUMS EARNED

	1	2	3	4
Line of Business	Net Premiums Written per Column 6, Part 1B	Unearned Premiums Dec. 31 Prior Year- per Col. 3, Last Year's Part 1	Unearned Premiums Dec. 31 Current Year- per Col. 5 Part 1A	Premiums Earned During Year (Cols. 1 + 2 - 3)
1. Fire				
2. Allied lines				
3. Farmowners multiple peril				
4. Homeowners multiple peril				
5. Commercial multiple peril				
6. Mortgage guaranty				
8. Ocean marine				
9. Inland marine				
10. Financial guaranty				
11.1 Medical professional liability—occurrence				
11.2 Medical professional liability—claims-made				
12. Earthquake				
13. Group accident and health				
14. Credit accident and health (group and individual)				
15. Other accident and health				
16. Workers' compensation				
17.1 Other liability—occurrence				
17.2 Other liability—claims-made				
17.3 Excess workers' compensation				
18.1 Products liability—occurrence				
18.2 Products liability—claims-made				
19.1,19.2 Private passenger auto liability				
19.3,19.4 Commercial auto liability				
21. Auto physical damage				
22. Aircraft (all perils)				
23. Fidelity				
24. Surety				
26. Burglary and theft				
27. Boiler and machinery				
28. Credit				
29. International				
30. Warranty				
31. Reinsurance-nonproportional assumed property				
32. Reinsurance-nonproportional assumed liability				
33. Reinsurance-nonproportional assumed financial lines				
34. Aggregate write-ins for other lines of business				
35. TOTALS				

DETAILS OF WRITE-IN LINES				
3401.				
3402.				
3403.				
3498. Sum of remaining write-ins for Line 34 from overflow page				
3499. Totals (Lines 3401 through 3403 plus 3498) (Line 34 above)				

UNDERWRITING AND INVESTMENT EXHIBIT

PART 1A – RECAPITULATION OF ALL PREMIUMS

Line of Business	1 Amount Unearned (Running One Year or Less from Date of Policy) (a)	2 Amount Unearned (Running More Than One Year from Date of Policy) (a)	3 Earned but Unbilled Premium	4 Reserve for Rate Credits and Retrospective Adjustments Based on Experience	5 Total Reserve for Unearned Premiums Cols. 1 + 2 + 3 + 4
1. Fire					
2. Allied lines					
3. Farmowners multiple peril					
4. Homeowners multiple peril					
5. Commercial multiple peril					
6. Mortgage guaranty					
8. Ocean marine					
9. Inland marine					
10. Financial guaranty					
11.1 Medical professional liability—occurrence					
11.2 Medical professional liability—claims-made					
12. Earthquake					
13. Group accident and health					
14. Credit accident and health (group and individual)					
15. Other accident and health					
16. Workers' compensation					
17.1 Other liability—occurrence					
17.2 Other liability—claims-made					
17.3 Excess workers' compensation					
18.1 Products liability—occurrence					
18.2 Products liability—claims-made					
19.1,19.2 Private passenger auto liability					
19.3,19.4 Commercial auto liability					
21. Auto physical damage					
22. Aircraft (all perils)					
23. Fidelity					
24. Surety					
26. Burglary and theft					
27. Boiler and machinery					
28. Credit					
29. International					
30. Warranty					
31. Reinsurance-nonproportional assumed property					
32. Reinsurance-nonproportional assumed liability					
33. Reinsurance-nonproportional assumed financial lines					
34. Aggregate write-ins for other lines of business					
35. TOTALS					
36. Accrued retrospective premiums based on experience					
37. Earned but unbilled premiums					
38. Balance (Sum of Lines 35 through 37)					

DETAILS OF WRITE-IN LINES					
3401.					
3402.					
3403.					
3498. Sum of remaining write-ins for Line 34 from overflow page					
3499. Totals (Lines 3401 through 3403 plus 3498) (Line 34 above)					

(a) State here basis of computation used in each case

UNDERWRITING AND INVESTMENT EXHIBIT

PART 1B – PREMIUMS WRITTEN

Line of Business	1 Direct Business (a)	Reinsurance Assumed		Reinsurance Ceded		6 Net Premiums Written Cols. 1 + 2 + 3 - 4 - 5
		2 From Affiliates	3 From Non- Affiliates	4 To Affiliates	5 To Non- Affiliates	
1. Fire	163,835		113,278	277,113		
2. Allied lines	19,275		282,630	301,905		
3. Farmowners multiple peril						
4. Homeowners multiple peril	13,183,501			13,183,501		
5. Commercial multiple peril	4,551,195		13,410,424	17,961,619		
6. Mortgage guaranty						
8. Ocean marine	(101,471)			(101,471)		
9. Inland marine	19,948,443			19,948,443		
10. Financial guaranty						
11.1 Medical professional liability--occurrence	856,274			856,274		
11.2 Medical professional liability--claims-made	2,717,039		5,904,143	8,621,182		
12. Earthquake	193,664		6,762	200,426		
13. Group accident and health	58,243,105		92,831	58,335,936		
14. Credit accident and health (group and individual)						
15. Other accident and health						
16. Workers' compensation						
17.1 Other liability—occurrence	6,535,399	3,590,672	(1,331,889)	8,794,182		
17.2 Other liability—claims-made	169,449,562	492,025	23,508,038	193,449,625		
17.3 Excess workers' compensation						
18.1 Products liability—occurrence						
18.2 Products liability—claims-made	481,147			481,147		
19.1,19.2 Private passenger auto liability	2,857,134			2,857,134		
19.3,19.4 Commercial auto liability						
21. Auto physical damage	14,747,016			14,747,016		
22. Aircraft (all perils)						
23. Fidelity	471,602			471,602		
24. Surety	1,892,442		(302,766)	1,589,676		
26. Burglary and theft	220,933			220,933		
27. Boiler and machinery			(522)	(522)		
28. Credit	(86,248)			(86,248)		
29. International						
30. Warranty						
31. Reinsurance-nonproportional assumed property	X X X					
32. Reinsurance-nonproportional assumed liability	X X X					
33. Reinsurance-nonproportional assumed financial lines	X X X					
34. Aggregate write-ins for other lines of business						
35. TOTALS	296,343,847	4,082,697	41,682,929	342,109,473		

DETAILS OF WRITE-IN LINES						
3401.						
3402.						
3403.						
3498. Sum of remaining write-ins for Line 34 from overflow page						
3499. Totals (Lines 3401 through 3403 plus 3498) (Line 34 above)						

(a) Does the company's direct premiums written include premiums recorded on an installment basis? Yes [] No [X]

If yes: 1. The amount of such installment premiums \$ 0

2. Amount at which such installment premiums would have been reported had they been recorded on an annualized basis \$ 0

UNDERWRITING AND INVESTMENT EXHIBIT PART 2 – LOSSES PAID AND INCURRED

Line of Business	Losses Paid Less Salvage				5 Net Losses Unpaid Current Year (Part 2A, Col. 8)	6 Net Losses Unpaid Prior Year	7 Losses Incurred Current Year (Cols. 4 + 5 - 6)	8 Percentage of Losses Incurred (Col. 7, Part 2) to Premiums Earned (Col. 4, Part 1)
	1 Direct Business	2 Reinsurance Assumed	3 Reinsurance Recovered	4 Net Payments (Cols. 1 + 2 - 3)				
1. Fire	(793,089)	734,153	(58,936)					
2. Allied lines	7,106	8,961,705	8,968,811					
3. Farmowners multiple peril								
4. Homeowners multiple peril	14,365,127		14,365,127					
5. Commercial multiple peril	8,821		8,821					
6. Mortgage guaranty								
8. Ocean marine	363,742	3,244	366,986					
9. Inland marine	18,209,502		18,209,502					
10. Financial guaranty								
11.1 Medical professional liability—occurrence	1,974,374	599	1,974,973					
11.2 Medical professional liability—claims-made	185,000	9,266,380	9,451,380					
12. Earthquake								
13. Group accident and health	69,483,507	(53,494)	69,430,013					
14. Credit accident and health (group and individual)								
15. Other accident and health	355,938	(13,733)	342,205					
16. Workers' compensation								
17.1 Other liability—occurrence	55,433,145	4,786,805	60,219,950					
17.2 Other liability—claims-made	32,670,651	19,757,332	52,427,983					
17.3 Excess workers' compensation								
18.1 Products liability—occurrence								
18.2 Products liability—claims-made								
19.1,19.2 Private passenger auto liability	5,151,036		5,151,036					
19.3,19.4 Commercial auto liability								
21. Auto physical damage	4,818,791		4,818,791					
22. Aircraft (all perils)	224,078		224,078					
23. Fidelity								
24. Surety	781,536	1,389,862	2,171,398					
26. Burglary and theft	730,893		730,893					
27. Boiler and machinery								
28. Credit								
29. International								
30. Warranty								
31. Reinsurance-nonproportional assumed property	X X X							
32. Reinsurance-nonproportional assumed liability	X X X							
33. Reinsurance-nonproportional assumed financial lines	X X X							
34. Aggregate write-ins for other lines of business								
35. TOTALS	203,970,158	44,832,853	248,803,011					

DETAILS OF WRITE-IN LINES							
3401.							
3402.							
3403.							
3498. Sum of remaining write-ins for Line 34 from overflow page							
3499. Totals (Lines 3401 through 3403 plus 3498) (Line 34 above)							

UNDERWRITING AND INVESTMENT EXHIBIT

PART 2A – UNPAID LOSSES AND LOSS ADJUSTMENT EXPENSES

Line of Business	Reported Losses				Incurred But Not Reported			Net Losses Unpaid (Cols. 4 + 5 + 6 - 7)	Net Unpaid Loss Adjustment Expenses
	1 Direct	2 Reinsurance Assumed	3 Deduct Reinsurance Recoverable	4 Net Losses Excl. Incurred But Not Reported (Cols. 1 + 2 - 3)	5 Direct	6 Reinsurance Assumed	7 Reinsurance Ceded		
1. Fire	955,611	874,772	1,830,383		2,288,675	53,141	2,341,816		
2. Allied lines		8,886,181	8,886,181		1,203,111	3,459,071	4,662,182		
3. Farmowners multiple peril									
4. Homeowners multiple peril	6,540,213		6,540,213		(2,834,503)		(2,834,503)		
5. Commercial multiple peril	1,285,502	163,040	1,448,542		3,056,100	2,706,855	5,762,955		
6. Mortgage guaranty									
8. Ocean marine	908,525	19,756	928,281		1,619,787	(1,295)	1,618,492		
9. Inland marine	3,498,501		3,498,501		4,555,931		4,555,931		
10. Financial guaranty									
11.1 Medical professional liability—occurrence	2,191,423	750,500	2,941,923		1,238,569	218,759	1,457,328		
11.2 Medical professional liability—claims-made	1,829,928	51,581,345	53,411,273		9,410,351	12,707,413	22,117,764		
12. Earthquake					40,515	17,677	58,192		
13. Group accident and health	25,185,890		25,185,890		18,296,673	76,159	18,372,832	(a)	
14. Credit accident and health (group and individual)									
15. Other accident and health					37,557	20,195	57,752	(a)	
16. Workers' compensation									
17.1 Other liability—occurrence	54,985,009	33,293,413	88,278,422		97,878,197	20,005,883	117,884,080		
17.2 Other liability—claims-made	85,374,235	406,418	85,780,653		233,330,749	11,620,838	244,951,587		
17.3 Excess workers' compensation									
18.1 Products liability—occurrence					886,059	15,218	901,277		
18.2 Products liability—claims-made	2,000,000		2,000,000		618,087	294,790	912,877		
19.1,19.2 Private passenger auto liability	1,102,501		1,102,501		493,006		493,006		
19.3,19.4 Commercial auto liability									
21. Auto physical damage	(220,779)		(220,779)		2,558,574		2,558,574		
22. Aircraft (all perils)	200,108		200,108		6,326,419		6,326,419		
23. Fidelity					173,127		173,127		
24. Surety	1,864,833	1,174,300	3,039,133		9,463,882	9,504,979	18,968,861		
26. Burglary and theft					7,739,981	2,577	7,742,558		
27. Boiler and machinery					(36)	6,225	6,189		
28. Credit					(927,535)	(95,050)	(1,022,585)		
29. International									
30. Warranty									
31. Reinsurance-nonproportional assumed property	X X X				X X X				
32. Reinsurance-nonproportional assumed liability	X X X				X X X				
33. Reinsurance-nonproportional assumed financial lines	X X X				X X X				
34. Aggregate write-ins for other lines of business									
35. TOTALS	187,701,500	97,149,725	284,851,225		397,453,276	60,613,435	458,066,711		

DETAILS OF WRITE-IN LINES	1	2	3	4	5	6	7	8	9
3401.									
3402.									
3403.									
3498. Sum of remaining write-ins for Line 34 from overflow page									
3499. Totals (Lines 3401 through 3403 plus 3498) (Line 34 above)									

(a) Including \$ 0 for present value of life indemnity claims.

UNDERWRITING AND INVESTMENT EXHIBIT

PART 3 - EXPENSES

	1	2	3	4
	Loss Adjustment Expenses	Other Underwriting Expenses	Investment Expenses	Total
1. Claim adjustment services:				
1.1 Direct	2,219,818			2,219,818
1.2 Reinsurance assumed	15,533			15,533
1.3 Reinsurance ceded	2,235,350			2,235,350
1.4 Net claim adjustment services (1.1 + 1.2 - 1.3)	1			1
2. Commission and brokerage:				
2.1 Direct, excluding contingent		40,848,190		40,848,190
2.2 Reinsurance assumed, excluding contingent		3,816,243		3,816,243
2.3 Reinsurance ceded, excluding contingent		44,664,433		44,664,433
2.4 Contingent—direct		7,022,125		7,022,125
2.5 Contingent—reinsurance assumed				
2.6 Contingent—reinsurance ceded		7,022,125		7,022,125
2.7 Policy and membership fees				
2.8 Net commission and brokerage (2.1 + 2.2 - 2.3 + 2.4 + 2.5 - 2.6 + 2.7)				
3. Allowances to manager and agents				
4. Advertising			346	346
5. Boards, bureaus and associations			263	263
6. Surveys and underwriting reports			127	127
7. Audit of assureds' records				
8. Salary and related items:				
8.1 Salaries			79,274	79,274
8.2 Payroll taxes			17,786	17,786
9. Employee relations and welfare			39,309	39,309
10. Insurance			365	365
11. Directors' fees			14	14
12. Travel and travel items			1,235	1,235
13. Rent and rent items			27,867	27,867
14. Equipment			18,565	18,565
15. Cost or depreciation of EDP equipment and software			11,786	11,786
16. Printing and stationery			870	870
17. Postage, telephone and telegraph, exchange and express			2,036	2,036
18. Legal and auditing			1,520	1,520
19. Totals (Lines 3 to 18)			201,363	201,363
20. Taxes, licenses and fees:				
20.1 State and local insurance taxes deducting guaranty association credits of \$ 0				
20.2 Insurance department licenses and fees				
20.3 Gross guaranty association assessments				
20.4 All other (excluding federal and foreign income and real estate)		13,394		13,394
20.5 Total taxes, licenses and fees (20.1 + 20.2 + 20.3 + 20.4)		13,394		13,394
21. Real estate expenses				
22. Real estate taxes				
23. Reimbursements by uninsured plans				
24. Aggregate write-ins for miscellaneous expenses	709	(512,250)	35,989	(475,552)
25. Total expenses incurred	710	(498,856)	237,352	(a) (260,794)
26. Less unpaid expenses—current year	(990)			(990)
27. Add unpaid expenses—prior year	(1,698)			(1,698)
28. Amounts receivable relating to uninsured plans, prior year				
29. Amounts receivable relating to uninsured plans, current year				
30. TOTAL EXPENSES PAID (Lines 25 - 26 + 27 - 28 + 29)	2	(498,856)	237,352	(261,502)

DETAILS OF WRITE-IN LINES				
2401. Other expenses	709	(512,250)	35,989	(475,552)
2402.				
2403.				
2498. Sum of remaining write-ins for Line 24 from overflow page				
2499. Totals (Lines 2401 through 2403 plus 2498) (Line 24 above)	709	(512,250)	35,989	(475,552)

(a) Includes management fees of \$ 74,578 to affiliates and \$ 0 to non-affiliates.

EXHIBIT OF NET INVESTMENT INCOME

	1 Collected During Year	2 Earned During Year
1. U.S. Government bonds	(a) 791,602	742,047
1.1 Bonds exempt from U.S. tax	(a) 50,484	27,150
1.2 Other bonds (unaffiliated)	(a) 2,117,177	2,241,275
1.3 Bonds of affiliates	(a)	
2.1 Preferred stocks (unaffiliated)	(b)	
2.11 Preferred stocks of affiliates	(b)	
2.2 Common stocks (unaffiliated)	8,358	8,358
2.21 Common stocks of affiliates		
3. Mortgage loans	(c)	
4. Real estate	(d)	
5. Contract loans		
6. Cash, cash equivalents and short-term investments	(e) 101,629	101,629
7. Derivative instruments	(f)	
8. Other invested assets		
9. Aggregate write-ins for investment income	580	580
10. Total gross investment income	3,069,830	3,121,039
11. Investment expenses		(g) 237,352
12. Investment taxes, licenses and fees, excluding federal income taxes		(g)
13. Interest expense		(h)
14. Depreciation on real estate and other invested assets		(i)
15. Aggregate write-ins for deductions from investment income		
16. Total deductions (Lines 11 through 15)		237,352
17. Net investment income (Line 10 minus Line 16)		2,883,687

DETAILS OF WRITE-IN LINES		
0901. Miscellaneous Income/(Expense)	580	580
0902.		
0903.		
0998. Summary of remaining write-ins for Line 09 from overflow page		
0999. Totals (Lines 0901 through 0903 plus 0998) (Line 09 above)	580	580
1501.		
1502.		
1503.		
1598. Summary of remaining write-ins for Line 15 from overflow page		
1599. Totals (Lines 1501 through 1503 plus 1598) (Line 15 above)		

- (a) Includes \$ 127,114 accrual of discount less \$ 248,891 amortization of premium and less \$ 100,178 paid for accrued interest on purchases.
- (b) Includes \$ 0 accrual of discount less \$ 0 amortization of premium and less \$ 0 paid for accrued dividends on purchases.
- (c) Includes \$ 0 accrual of discount less \$ 0 amortization of premium and less \$ 0 paid for accrued interest on purchases.
- (d) Includes \$ 0 for company's occupancy of its own buildings; and excludes \$ 0 interest on encumbrances.
- (e) Includes \$ 0 accrual of discount less \$ 0 amortization of premium and less \$ 0 paid for accrued interest on purchases.
- (f) Includes \$ 0 accrual of discount less \$ 0 amortization of premium.
- (g) Includes \$ 74,578 investment expenses and \$ 0 investment taxes, licenses and fees, excluding federal income taxes, attributable to segregated and Separate Accounts.
- (h) Includes \$ 0 interest on surplus notes and \$ 0 interest on capital notes.
- (i) Includes \$ 0 depreciation on real estate and \$ 0 depreciation on other invested assets.

EXHIBIT OF CAPITAL GAINS (LOSSES)

	1 Realized Gain (Loss) on Sales or Maturity	2 Other Realized Adjustments	3 Total Realized Capital Gain (Loss) (Columns 1 + 2)	4 Change in Unrealized Capital Gain (Loss)	5 Change in Unrealized Foreign Exchange Capital Gain (Loss)
1. U.S. Government bonds	1,234,949		1,234,949		
1.1 Bonds exempt from U.S. tax	26,089		26,089		
1.2 Other bonds (unaffiliated)	(291,198)		(291,198)	(267,627)	
1.3 Bonds of affiliates					
2.1 Preferred stocks (unaffiliated)					
2.11 Preferred stocks of affiliates					
2.2 Common stocks (unaffiliated)					
2.21 Common stocks of affiliates					
3. Mortgage loans					
4. Real estate					
5. Contract loans					
6. Cash, cash equivalents and short-term investments					
7. Derivative instruments					
8. Other invested assets					
9. Aggregate write-ins for capital gains (losses)					
10. Total capital gains (losses)	969,840		969,840	(267,627)	

DETAILS OF WRITE-IN LINES					
0901.					
0902.					
0903.					
0998. Summary of remaining write-ins for Line 09 from overflow page					
0999. Totals (Lines 0901 through 0903 plus 0998) (Line 09 above)					

EXHIBIT OF NONADMITTED ASSETS

	1 Current Year Total Nonadmitted Assets	2 Prior Year Total Nonadmitted Assets	3 Change in Total Nonadmitted Assets (Col. 2 - Col. 1)
1. Bonds (Schedule D)			
2. Stocks (Schedule D):			
2.1 Preferred stocks			
2.2 Common stocks			
3. Mortgage loans on real estate (Schedule B):			
3.1 First lines			
3.2 Other than first lines			
4. Real estate (Schedule A):			
4.1 Properties occupied by the company			
4.2 Properties held for the production of income			
4.3 Properties held for sale			
5. Cash (Schedule E - Part 1), cash equivalents (Schedule E - Part 2) and short-term investments (Schedule DA)			
6. Contract loans			
7. Derivatives (Schedule DB)			
8. Other invested assets (Schedule BA)			
9. Receivables for securities			
10. Securities lending reinvested collateral assets (Schedule DL)			
11. Aggregate write-ins for invested assets			
12. Subtotals, cash and invested assets (Lines 1 to 11)			
13. Title plants (for Title insurers only)			
14. Investment income due and accrued			
15. Premiums and considerations:			
15.1 Uncollected premiums and agents' balances in the course of collection			
15.2 Deferred premiums, agents' balances and installments booked but deferred and not yet due			
15.3 Accrued retrospective premiums and contracts subject to redetermination			
16. Reinsurance:			
16.1 Amounts recoverable from reinsurers			
16.2 Funds held by or deposited with reinsured companies			
16.3 Other amounts receivable under reinsurance contracts			
17. Amounts receivable relating to uninsured plans			
18.1 Current federal and foreign income tax recoverable and interest thereon			
18.2 Net deferred tax asset	2,327,597	2,773,685	446,088
19. Guaranty funds receivable or on deposit			
20. Electronic data processing equipment and software			
21. Furniture and equipment, including health care delivery assets			
22. Net adjustment in assets and liabilities due to foreign exchange rates			
23. Receivables from parent, subsidiaries and affiliates			
24. Health care and other amounts receivable			
25. Aggregate write-ins for other-than-invested assets	10,993,714	10,993,714	
26. Total assets excluding Separate Accounts, Segregated Accounts and Protected Cell Accounts (Lines 12 to 25)	13,321,311	13,767,399	446,088
27. From Separate Accounts, Segregated Accounts and Protected Cell Accounts			
28. Total (Lines 26 and 27)	13,321,311	13,767,399	446,088

DETAILS OF WRITE-IN LINES			
1101.			
1102.			
1103.			
1198. Summary of remaining write-ins for Line 11 from overflow page			
1199. Totals (Lines 1101 through 1103 plus 1198) (Line 11 above)			
2501. Intangible Asset	10,993,714	10,993,714	
2502.			
2503.			
2598. Summary of remaining write-ins for Line 25 from overflow page			
2599. Totals (Lines 2501 through 2503 plus 2598) (Line 25 above)	10,993,714	10,993,714	

NOTES TO FINANCIAL STATEMENTS

1. Summary of Significant Accounting Policies and Going Concern

A. Accounting Practices

The accompanying financial statements of Ironshore Indemnity Inc. (the "Company") have been prepared in conformity with accounting practices prescribed or permitted by the State of Illinois Department of Insurance (the "Department"). These practices are consistent with those prescribed or permitted under the National Association of Insurance Commissioners' ("NAIC") Accounting Practices and Procedures Manual ("NAIC SAP"), subject to any deviations prescribed or permitted by the State of Illinois Commerce Commissioner.

The Company does not have any prescribed or permitted accounting practices.

NET INCOME

	SSAP #	F/S Page	F/S Line #	2020	2019
(1) Ironshore Indemnity Inc. state basis (Page 4, Line 20, Columns 1 & 2)	X X X	X X X	X X X	4,576,362	4,464,543
(2) State Prescribed Practices that are an increase/(decrease) from NAIC SAP:					

Details of Depreciation of Fixed Assets		SSAP #	F/S Page	F/S Line #	2020	2019
.....						
Totals (Lines 01A0201 through 01A0225)					0	0

(3) State Permitted Practices that are an increase/(decrease) from NAIC SAP:

Details of Depreciation of Home Office Property		SSAP #	F/S Page	F/S Line #	2020	2019
.....						
Totals (Lines 01A0301 through 01A0325)					0	0

(4) NAIC SAP (1 - 2 - 3 = 4)	X X X	X X X	X X X	4,576,362	4,464,543
------------------------------	-------	-------	-------	-----------	-----------

SURPLUS

	SSAP #	F/S Page	F/S Line #	2020	2019
(5) Ironshore Indemnity Inc. state basis (Page 3, Line 37, Columns 1 & 2)	X X X	X X X	X X X	100,786,575	89,186,752
(6) State Prescribed Practices that are an increase/(decrease) from NAIC SAP:					

e.g., Goodwill, net, Fixed Assets, Net		SSAP #	F/S Page	F/S Line #	2020	2019
.....						
Totals (Lines 01A0601 through 01A0625)					0	0

(7) State Permitted Practices that are an increase/(decrease) from NAIC SAP:

Home Office Property		SSAP #	F/S Page	F/S Line #	2020	2019
.....						
Totals (Lines 01A0701 through 01A0725)					0	0

(8) NAIC SAP (5 - 6 - 7 = 8)	X X X	X X X	X X X	100,786,575	89,186,752
------------------------------	-------	-------	-------	-------------	------------

B. Use of Estimates in the Preparation of the Financial Statements

The preparation of financial statements requires management to make estimates and assumptions that affect the reported amounts of assets, liabilities, revenues, and expenses. It also requires estimates in the disclosure of contingent assets and liabilities. Actual results could differ from these estimates.

C. Accounting Policy

NOTES TO FINANCIAL STATEMENTS

Premiums are earned over the terms of the related policies and reinsurance contracts. Unearned premium reserves are established to cover the unexpired portion of premiums written. Such reserves are computed by pro-rata methods. Expenses incurred in connection with acquiring new insurance business, including acquisition costs such as sales commissions, are charged to operations as incurred. Expenses incurred are reduced for ceding allowances received or receivable.

In addition, the Company applies the following accounting policies, where applicable:

1. Short term investments are carried at cost, adjusted where appropriate for amortization of premium or discount, or fair value as specified by the Purposes and Procedures Manual of the NAIC Investment Analysis Office (SVO Manual).
2. Bonds are carried at cost, adjusted where appropriate for amortization of premium or discount, or fair value as specified by the SVO Manual.
3. Common stocks are carried at fair value, except that investments in stocks of subsidiaries, controlled and affiliated ("SCA") companies are carried according to Note 1C(7).
4. Preferred stocks are carried at cost or fair value as specified by the SVO Manual. Preferred stocks of SCA companies are carried according to Note 1C(7).
5. Mortgage loans are carried at unpaid principal balances, less impairments as specified by the SVO Manual.
6. Mortgage backed/asset backed securities are carried at amortized cost or fair value based on guidance in the SVO Manual. Prepayment assumptions for mortgage backed/asset backed securities are based on market expectations. The retrospective adjustment method is used to value all mortgage backed/asset backed securities.
7. Investments in SCA companies are carried in accordance with SSAP No. 97, Investments in Subsidiary, Controlled, and Affiliated Entities, A Replacement of SSAP No. 88, and the SVO Manual.
8. Investments in joint ventures, partnerships, and limited liability companies are carried in accordance with SSAP No. 48, Joint Ventures, Partnerships and Limited Liability Companies, and the SVO Manual.
9. Derivative Securities, refer to Note 8.
10. Investment income is anticipated as a factor in the premium deficiency calculation, in accordance with SSAP No. 53, Property Casualty Contracts - Premiums. Refer to Note 30.
11. Unpaid losses and loss adjustment expenses include an amount determined from individual case estimates and an amount, based on past experience, for losses and loss adjustment expenses incurred but not reported. Such liabilities are necessarily based on assumptions and estimates, and while management believes the amount is adequate, the ultimate liability may be in excess of or less than the amount provided. The methods, for making such estimates and for establishing the resulting liability, are continually reviewed and follow current standards of practice. Any adjustments to the liability are reflected in the period that they are determined.
12. The Company did not change its capitalization policy in 2020.
13. The Company has no pharmaceutical rebate receivables.

D. **Going Concern**

The Company is not aware of any conditions that would impact its ability to continue as a going concern.

2. **Accounting Changes and Corrections of Errors**

There were no material changes in accounting principles and/or correction of errors.

3. **Business Combinations and Goodwill**

A. **Statutory Purchase Method**

The Company did not enter into any statutory purchases during the year.

B. **Statutory Merger**

The Company did not enter into any statutory mergers during the year.

C. **Impairment Loss**

The Company did not recognize an impairment loss during the period.

4. **Discontinued Operations**

The Company has no discontinued operations

A. **Discontinued Operations Disposed of or Classified as Held for Sale**
Not Applicable

B. **Change in Plan of Sale of Discontinued Operation**

Not Applicable

C. **Nature of Any Significant Continuing Involvement with Discontinued Operations After Disposal**

Not Applicable

NOTES TO FINANCIAL STATEMENTS

D. Equity Interest Retained in the Discontinued Operation After Disposal

Not Applicable

5. Investments

A. Mortgage Loans, including Mezzanine Real Estate Loans

Not Applicable

B. Debt Restructuring

Not Applicable

C. Reverse Mortgages

Not Applicable

D. Loan-Backed Securities

(1) Prepayment speed assumptions are updated monthly with data sourced from the Bloomberg data service.

	(1)	(2)	(3)
	Amortized Co Basis Before Other-than- Temporary Impairment	Other-than- Temporary Impairment Recognized in L	Fair Value 1 - 2
OTTI recognized 1st Quarter			
a. Intent to sell	\$ 0	0	0
b. Inability or lack of intent to retain the investment in the security for a p recover the amortized cost basis	\$ 0	0	0
c. Total 1st Quarter	\$ 0	0	0
OTTI recognized 2nd Quarter			
d. Intent to sell	\$ 0	0	0
e. Inability or lack of intent to retain the investment in the security for a p recover the amortized cost basis	\$ 0	0	0
f. Total 2nd Quarter	\$ 0	0	0
OTTI recognized 3rd Quarter			
g. Intent to sell	\$ 0	0	0
h. Inability or lack of intent to retain the investment in the security for a p recover the amortized cost basis	\$ 0	0	0
i. Total 3rd Quarter	\$ 0	0	0
OTTI recognized 4th Quarter			
j. Intent to sell	\$ 0	0	0
k. Inability or lack of intent to retain the investment in the security for a p recover the amortized cost basis	\$ 0	0	0
l. Total 4th Quarter	\$ 0	0	0
m. Annual Aggregate Total	\$ X X X	0	

(1)	(2)	(3)	(4)	(5)	(6)	(7)
CUSIP	Book/Adjusted Carrying Value Amortized Cost Before Current Period OTTI	Present Value of Projected Cash Flows	Recognized Other-than- Temporary Impairment	Amortized Cost After Other- Than-Temporary Impairment	Fair Value at time of OTTI	Date of Financial Statement Where Reported
Total	X X X	X X X	0	X X X	X X X	X X X

NOTE: Each CUSIP should be listed separately each time an OTTI is recognized

For Securities with amortized cost or adjusted amortized cost:

Column 2 minus Column 3 should equal Column 4

Column 2 minus Column 4 should equal Column 5

(4) All impaired Loaned Backed Securities for which an other-than-temporary impairment has not been recognized in earnings as a realized loss as of December 31, 2020:

NOTES TO FINANCIAL STATEMENTS

a. The aggregate Amount of unrealized losses:

		(1)	
Less than 12 months	\$	0	
12 Months or Longer	\$	(21,404)	

b. The aggregate related fair value of securities with unrealized losses:

		0	
Less than 12 months	\$	0	
12 Months or Longer	\$	3,487,639	

The Company reviews fixed income securities for impairment on a quarterly basis. Securities are reviewed for both quantitative and qualitative considerations including, but not limited to: (a) the extent of the decline in fair value below book value, (b) the duration of the decline, (c) significant adverse changes in the financial condition or near term prospects of the investment or issuer, (d) significant change in the business climate or credit ratings of the issuer, (e) general market conditions and volatility, (f) industry factors, and (g) the past impairment of the security holding or the issuer. If the Company believes a decline in the value of a particular investment is temporary, the decline is recorded as an unrealized loss in policyholders' equity. If the decline is believed to be "other-than-temporary," and the Company believes it will not be able to collect all cash flows due on its fixed income securities, then the carrying value of the investment is written down to the expected cash flow amount and a realized loss is recorded as a credit impairment.

(5)

E. Dollar Repurchase Agreements and/or Securities Lending Transactions

Not Applicable

F. Repurchase Agreements Transactions Accounted for as Secured Borrowing

Not Applicable

G. Reverse Repurchase Agreements Transactions Accounted for as Secured Borrowing

Not Applicable

H. Repurchase Agreements Transactions Accounted for as a Sale

Not Applicable

I. Reverse Repurchase Agreements Transactions Accounted for as a Sale

Not Applicable

J. Real Estate

The Company does not hold any investments in real estate.

K. Investment in Low Income Housing Tax credits ("LIHTC")

The Company does not hold investments in low-income housing tax credits.

L. Restricted Assets

NOTES TO FINANCIAL STATEMENTS

(1) Restricted Assets (Including Pledged)

Restricted Asset Category	Gross (Admitted & Nonadmitted) Restricted						
	Current Year					6 Total From Prior Year	7 Increase/ (Decrease) (5 minus 6)
	1 Total General Account (G/A)	2 G/A Supporting S/A Activity (a)	3 Total Separate Account (S/A) Restricted Ass	4 S/A Assets Supporting G/A Activity (b)	5 Total (1 plus 3)		
a. Subject to contractual obligation for which liability is not shown	\$ 0	0	0	0	0	0	0
b. Collateral held under security lending agreements	\$ 0	0	0	0	0	0	0
c. Subject to repurchase agreements	\$ 0	0	0	0	0	0	0
d. Subject to reverse repurchase agreements	\$ 0	0	0	0	0	0	0
e. Subject to dollar repurchase agreements	\$ 0	0	0	0	0	0	0
f. Subject to dollar reverse repurchase agreements	\$ 0	0	0	0	0	0	0
g. Placed under option contracts	\$ 0	0	0	0	0	0	0
h. Letter stock or securities restricted as to sale - excluding FHLB capital stock	\$ 0	0	0	0	0	0	0
i. FHLB capital stock	\$ 246,000	0	0	0	246,000	299,400	-53,400
j. On deposit with states	\$ 8,717,805	0	0	0	8,717,805	10,072,533	-1,354,728
k. On deposit with other regulatory bodies	\$ 0	0	0	0	0	0	0
l. Pledged as collateral to FHLB (including assets backing funding agreements)	\$ 0	0	0	0	0	0	0
m. Pledged as collateral not captured in other categories	\$ 0	0	0	0	0	0	0
n. Other restricted Assets	\$ 0	0	0	0	0	0	0
o. Total Restricted Assets	\$ 8,963,805	0	0	0	8,963,805	10,371,933	-1,408,128

(a) Subset of Column 1

(b) Subset of Column 3

Restricted Asset Category	Current Year			
	8	9	Percentage	
	Total Nonadmitted Restricted	Total Admitted Restricted (5 minus 8)	10 Gross (Admitted Nonadmitted) Restricted to Total Assets (c)	11 Admitted Restricted to Tot Admitted Assets (d)
a. Subject to contractual obligation for which liability is not shown	\$ 0	0	0.000	0.000
b. Collateral held under security lending agreements	\$ 0	0	0.000	0.000
c. Subject to repurchase agreements	\$ 0	0	0.000	0.000
d. Subject to reverse repurchase agreements	\$ 0	0	0.000	0.000
e. Subject to dollar repurchase agreements	\$ 0	0	0.000	0.000
f. Subject to dollar reverse repurchase agreements	\$ 0	0	0.000	0.000
g. Placed under option contracts	\$ 0	0	0.000	0.000
h. Letter stock or securities restricted as to sale - excluding FHLB capital stock	\$ 0	0	0.000	0.000
i. FHLB capital stock	\$ 0	246,000	0.061	0.063
j. On deposit with states	\$ 0	8,717,805	2.148	2.221
k. On deposit with other regulatory bodies	\$ 0	0	0.000	0.000
l. Pledged as collateral to FHLB (including assets backing funding agreements)	\$ 0	0	0.000	0.000
m. Pledged as collateral not captured in other categories	\$ 0	0	0.000	0.000
n. Other restricted Assets	\$ 0	0	0.000	0.000
o. Total Restricted Assets	\$ 0	8,963,805	2.209	2.284

(a) Column 5 divided by Assets Page, Column 1, Line 28

(b) Column 9 divided by Assets Page, Column 1, Line 28

NOTES TO FINANCIAL STATEMENTS

- (2) Details of Assets Pledged as Collateral Not Captured in Other Categories
(Contracts that Share Similar Characteristics, Such as Reinsurance and Derivatives, are Reported in Aggregate)

	Gross (Admitted & Nonadmitted) Restricted						
	Current Year					6	7
	1	2	3	4	5		
Description of Assets	Total General Account (G/A)	G/A Supportin S/A Activity (a)	Total Separate Account (S/A) Restricted Ass	S/A Assets Supporting G/ Activity (b)	Total (1 plus 3)	Total From Prior Year	Increase/ Decrease (5 minus 6)
.....							
Total (c)	0	0	0	0	0	0	0

	Percentage		
	8	9	10
	Total Current Year Admitted Restricted	Gross (Admitted & Nonadmitted) Restricted to Total Assets	Admitted Restricted to Total Admitted Assets
Description of Assets			
.....			
Total (c)	0	0.000	0.000

- (a) Subset of column 1
 (b) Subset of column 3
 (c) Total Line for Column 1 through 7 should equal 5L(1)m Columns 1 through 7 respectively and Total Line for Columns 8 through 10 should equal 5L(1)m Columns 9 through 11 respectively
- (3) Detail of Other Restricted Assets (Contracts that Share Similar Characteristic Reinsurance and Derivatives, Are Reported in the Aggregate)

	Gross (Admitted & Nonadmitted) Restricted						
	Current Year					6	7
	1	2	3	4	5		
Description of Assets	Total General Account (G/A)	G/A Supportin S/A Activity (a)	Total Separate Account (S/A) Restricted Ass	S/A Assets Supporting G/ Activity (b)	Total (1 plus 3)	Total From Prior Year	Increase/ Decrease (5 minus 6)
.....							
Total (c)	0	0	0	0	0	0	0

	Percentage		
	8	9	10
	Total Current Year Admitted Restricted	Gross (Admitted & Nonadmitted) Restricted to Total Assets	Admitted Restricted to Total Admitted Assets
Description of Assets			
.....			
Total (c)	0	0.000	0.000

- (a) Subset of column 1
 (b) Subset of column 3
 (c) Total Line for Column 1 through 7 should equal 5L(1)m Columns 1 through 7 respectively and Total Line for Columns 8 through 10 should equal 5L(1)m Columns 9 through 11 respectively

NOTES TO FINANCIAL STATEMENTS

(4) Collateral Received and Reflected as Assets Within the Reporting Entity's Financial Statement.

Collateral Assets	1 Book/Adjusted Carrying Value (BACV)	2 Fair Value	3 % of BACV to Total Assets (Admitted and Nonadmitted*)	4 % of BACV to Total Admitted Assets**
General Account:				
a. Cash, Cash Equivalents and Short-Term Investments	\$ 0	0	0.000	0.000
b. Schedule D, Part 1	\$ 0	0	0.000	0.000
c. Schedule D, Part 2, Section 1	\$ 0	0	0.000	0.000
d. Schedule D, Part 2, Section 2	\$ 0	0	0.000	0.000
e. Schedule B	\$ 0	0	0.000	0.000
f. Schedule A	\$ 0	0	0.000	0.000
g. Schedule BA, Part 1	\$ 0	0	0.000	0.000
h. Schedule DL, Part 1	\$ 0	0	0.000	0.000
i. Other	\$ 0	0	0.000	0.000
j. Total Collateral Assets (a+b+c+d+e+f+g+h+i)	\$ 0	0	0.000	0.000
Separate Account:				
k. Cash, Cash Equivalents and Short-Term Investments	\$ 0	0	0.000	0.000
l. Schedule D, Part 1	\$ 0	0	0.000	0.000
m. Schedule D, Part 2, Section 1	\$ 0	0	0.000	0.000
n. Schedule D, Part 2, Section 2	\$ 0	0	0.000	0.000
o. Schedule B	\$ 0	0	0.000	0.000
p. Schedule A	\$ 0	0	0.000	0.000
q. Schedule BA, Part 1	\$ 0	0	0.000	0.000
r. Schedule DL, Part 1	\$ 0	0	0.000	0.000
s. Other	\$ 0	0	0.000	0.000
t. Total Collateral Assets (k+l+m+n+o+p+q+r+s)	\$ 0	0	0.000	0.000

* j = Column 1 divided by Asset Page, Line 26 (Column 1)
t = Column 1 divided by Asset Page, Line 27 (Column 1)

** j = Column 1 divided by Asset Page, Line 26 (Column 3)
t = Column 1 divided by Asset Page, Line 27 (Column 3)

u. Recognized Obligation to Return Collateral Assets (General Account)
v. Recognized Obligation to Return Collateral Asset (Separate Account)

1 Amount	2 % of Liability to Total Liabilities*
\$ 0	0.000
\$ 0	0.000

* u = Column 1 divided by Liability Page, Line 26 (Column 1)
v = Column 1 divided by Liability Page, Line 27 (Column 1)

M. Working Capital Finance Investments
Not Applicable

N. Offsetting and Netting of Assets and Liabilities
Not Applicable

O. 5GI Securities
Not Applicable

P. Short Sales
Not Applicable

Q. Prepayment Penalty and Acceleration Fees
Not Applicable

6. Joint Ventures, Partnerships and Limited Liability Companies

A. Investments in joint ventures, partnerships and limited liability companies that exceed 10% of its admitted assets
Not Applicable

B. Impairments on joint ventures, partnerships or limited liability companies
Not Applicable

NOTES TO FINANCIAL STATEMENTS

7. Investment Income

A. Accrued Investment Income

The Company does not admit investment income due and accrued if amounts are over 90 days past due.

B. Amounts Nonadmitted

No amounts were excluded as of December 31, 2020.

8. Derivative Instruments

A. Derivatives under SSAP No. 86—Derivatives

- (1) The Company's investment activities do not include derivatives. However, the Company may acquire derivatives as additions to bond, common stock, or preferred stock investments. These derivatives are ancillary to the overall investment and are immaterial to the underlying investment portfolio.

9. Income Taxes

A. The components of the net deferred tax asset/(liability) at Dec. 31 are as follows:

	12/31/2020			12/31/2019		
	(1)	(2)	(3)	(4)	(5)	(6)
	Ordinary	Capital	(Col 1 + 2) Total	Ordinary	Capital	(Col 4 + 5) Total
a. Gross Deferred Tax Assets	\$ 2,730,000	60,000	2,790,000	3,385,000	9,000	3,394,000
b. Statutory Valuation Allowance Adjustments	\$ 0	0	0	0	0	0
c. Adjusted Gross Deferred Tax Assets (1a - 1b)	\$ 2,730,000	60,000	2,790,000	3,385,000	9,000	3,394,000
d. Deferred Tax Assets Nonadmitted	\$ 2,270,597	57,000	2,327,597	2,764,685	9,000	2,773,685
e. Subtotal Net Admitted Deferred Tax Asset (1c - 1d)	\$ 459,403	3,000	462,403	620,315	0	620,315
f. Deferred Tax Liabilities	\$ 155,000	3,000	158,000	162,000	0	162,000
g. Net Admitted Deferred Tax Assets / (Net Deferred Tax Liability) (1e - 1f)	\$ 304,403	0	304,403	458,315	0	458,315

	Change		
	(7)	(8)	(9)
	(Col 1 - 4) Ordinary	(Col 2 - 5) Capital	(Col 7 + 8) Total
a. Gross Deferred Tax Assets	\$ (655,000)	51,000	(604,000)
b. Statutory Valuation Allowance Adjustments	\$ 0	0	0
c. Adjusted Gross Deferred Tax Assets (1a - 1b)	\$ (655,000)	51,000	(604,000)
d. Deferred Tax Assets Nonadmitted	\$ (494,088)	48,000	(446,088)
e. Subtotal Net Admitted Deferred Tax Asset (1c - 1d)	\$ (160,912)	3,000	(157,912)
f. Deferred Tax Liabilities	\$ (7,000)	3,000	(4,000)
g. Net Admitted Deferred Tax Assets / (Net Deferred Tax Liability) (1e - 1f)	\$ (153,912)	0	(153,912)

NOTES TO FINANCIAL STATEMENTS

(2)	12/31/2020			12/31/2019		
	(1)	(2)	(3)	(4)	(5)	(6)
	Ordinary	Capital	(Col 1 + 2) Total	Ordinary	Capital	(Col 4 + 5) Total
Admission Calculation Components SSAP No. 101						
a. Federal Income Taxes Paid In Prior Years Recoverable Through Loss Carrybacks.	\$ 296,993	0	296,993	322,644	0	322,644
b. Adjusted Gross Deferred Tax Assets Expected To Be Realized (Excluding The Amount Of Deferred Tax Assets From 2(a) above) After Application of the Threshold Limitation. (The Lesser of 2(b)1 and 2(b)2 Below)	\$ 7,410	0	7,410	135,671	0	135,671
1. Adjusted Gross Deferred Tax Assets to be Realized Following the Balance Sheet Date.	\$ 7,410	0	7,410	135,671	0	135,671
2. Adjusted Gross Deferred Tax Assets Allowed per Limitation Threshold	\$ X X X	X X X	13,727,331	X X X	X X X	13,623,392
c. Adjusted Gross Deferred Tax Assets (Excluding the Amount Of Deferred Tax Assets From 2(a) and 2(b) above) Offset by Gross Deferred Tax Liabilities.	\$ 155,000	3,000	158,000	162,000	0	162,000
d. Deferred Tax Assets Admitted as the result of application of SSAP No. 101. Total (2(a) + 2(b) + 2(c))	\$ 459,403	3,000	462,403	620,315	0	620,315

(2)	Change		
	(1)	(2)	(3)
	(Col 1 - 4) Ordinary	(Col 2 - 5) Capital	(Col 7 + 8) Total
Admission Calculation Components SSAP No. 101			
a. Federal Income Taxes Paid In Prior Years Recoverable Through Loss Carrybacks.	\$ (25,651)	0	(25,651)
b. Adjusted Gross Deferred Tax Assets Expected To Be Realized (Excluding The Amount Of Deferred Tax Assets From 2(a) above) After Application of the Threshold Limitation. (The Lesser of 2(b)1 and 2(b)2 Below)	\$ (128,261)	0	(128,261)
1. Adjusted Gross Deferred Tax Assets to be Realized Following the Balance Sheet Date.	\$ (128,261)	0	(128,261)
2. Adjusted Gross Deferred Tax Assets Allowed per Limitation Threshold	\$ X X X	X X X	103,939
c. Adjusted Gross Deferred Tax Assets (Excluding the Amount Of Deferred Tax Assets From 2(a) and 2(b) above) Offset by Gross Deferred Tax Liabilities.	\$ (7,000)	3,000	(4,000)
d. Deferred Tax Assets Admitted as the result of application of SSAP No. 101. Total (2(a) + 2(b) + 2(c))	\$ (160,912)	3,000	(157,912)

(3)	2020	2019
	a. Ratio Percentage Used to Determine Recover Period And Threshold Limitation Amount.	2461.200%
b. Amount Of Adjusted Capital And Surplus Used To Determine Recovery Period And Threshold Limitation In 2(b)2 Above.	\$ 100,482,172.000	88,728,437.000

(4)	12/31/2020		12/31/2019		Change	
	(1)	(2)	(3)	(4)	(5)	(6)
	Ordinary	Capital	Ordinary	Capital	(Col 1 - 3) Ordinary	(Col 2 - 4) Capital
Impact of Tax-Planning Strategies						
a. Determination of Adjusted Gross Deferred Tax Assets and Net Admitted Deferred Tax Assets, By Tax Character As A Percentage.						
1. Adjusted Gross DTAs Amount From Note 9A1(c)	\$ 2,730,000	60,000	3,385,000	9,000	(655,000)	51,000
2. Percentage of Adjusted Gross DTAs By Tax Character Attributable To The Impact of Tax Planning Strategies	0.000	0.000	0.000	0.000	0.000	0.000
3. Net Admitted Adjusted Gross DTAs Amount from Note 9A1(e)	\$ 459,403	3,000	620,315	0	(160,912)	3,000
4. Percentage of Net Admitted Adjusted Gross DTAs by Tax Character Attributable To The Impact of Tax Planning Strategies	0.000	0.000	0.000	0.000	0.000	0.000

b. Does the Company's Tax-planning Strategies include the use of reinsurance? NO

B. Regarding deferred tax liabilities that are not recognized:

The Company does not have any DTLs described in SSAP No. 101 Income Taxes, a Replacement of SSAP No. 10R and SSAP No. 10, paragraph 23.

C. Current income taxes incurred consist of the following major components:

NOTES TO FINANCIAL STATEMENTS

	(1)	(2)	(3)
	12/31/2020	12/31/2019	(Col 1 - 2) Change
(1) Current Income Tax			
a. Federal	\$ (231,666)	477,302	(708,968)
b. Foreign	\$ 0	0	0
c. Subtotal	\$ (231,666)	477,302	(708,968)
d. Federal Income Tax on net capital gains	\$ 203,666	104,698	98,968
e. Utilization of capital loss carry-forwards	\$ 0	0	0
f. Other	\$ 0	0	0
g. Federal and foreign income taxes incurred	\$ (28,000)	582,000	(610,000)
(2) Deferred Tax Assets:			
a. Ordinary			
1. Discounting of unpaid losses	\$ 0	0	0
2. Unearned premium reserve	\$ 0	0	0
3. Policyholder reserves	\$ 0	0	0
4. Investments	\$ 0	0	0
5. Deferred acquisition costs	\$ 0	0	0
6. Policyholder dividends accrual	\$ 0	0	0
7. Fixed assets	\$ 88,000	0	88,000
8. Compensation and benefits accrual	\$ 0	0	0
9. Pension accrual	\$ 0	0	0
10. Receivables - nonadmitted	\$ 2,309,000	2,309,000	0
11. Net operating loss carry-forward	\$ 0	0	0
12. Tax credit carry-forward	\$ 0	0	0
13 Other (including items <5% of total ordinary tax assets)	\$ 333,000	1,076,000	(743,000)
99. Subtotal	\$ 2,730,000	3,385,000	(655,000)
b. Statutory valuation allowance adjustment	\$ 0	0	0
c. Nonadmitted	\$ 2,270,597	2,764,685	(494,088)
d. Admitted ordinary deferred tax assets (2a99 - 2b - 2c)	\$ 459,403	620,315	(160,912)
e. Capital:			
(1) Investments	\$ 60,000	9,000	51,000
(2) Net capital loss carry-forward	\$ 0	0	0
(3) Real estate	\$ 0	0	0
(4) Other (including items <5% of total capital tax assets)	\$ 0	0	0
99 Subtotal	\$ 60,000	9,000	51,000
f. Statutory valuation allowance adjustment	\$ 0	0	0
g. Nonadmitted	\$ 57,000	9,000	48,000
h. Admitted capital deferred tax assets (2e99 - 2f - 2g)	\$ 3,000	0	3,000
i. Admitted deferred tax assets (2d + 2h)	\$ 462,403	620,315	(157,912)
(3) Deferred Tax Liabilities:			
a. Ordinary			
1. Investments	\$ 155,000	145,000	10,000
2. Fixed assets	\$ 0	0	0
3. Deferred and uncollected premium	\$ 0	0	0
4. Policyholder reserves	\$ 0	0	0
5. Other (including items <5% of total ordinary tax liabilities)	\$ 0	17,000	(17,000)
99. Subtotal	\$ 155,000	162,000	(7,000)
b. Capital:			
1. Investments	\$ 3,000	0	3,000
2. Real Estate	\$ 0	0	0
3. Other (including items <5% of total capital tax liabilities)	\$ 0	0	0
99. Subtotal	\$ 3,000	0	3,000
c. Deferred tax liabilities (3a99 + 3b99)	\$ 158,000	162,000	(4,000)
(4) Net deferred tax assets/liabilities (2i - 3c)	\$ 304,403	458,315	(153,912)

D. Effective tax rates differ from the current statutory rate of 21% principally due to the effects of amortization and revisions to prior year estimates.

NOTES TO FINANCIAL STATEMENTS

E. The Company has no net operating loss or tax credit carry-forwards available to offset future net income subject to Federal income tax.

(1) The amount of Federal income taxes incurred and available for recoupment in the event of future losses is \$759,000 from the current year and \$926,000 from the preceding year.

(2) The Company does not have deposits admitted under Section 6603 of the Internal Revenue Code.

(3) Not applicable

The Company's Federal income tax return is consolidated with the following entities:

America First Insurance Company	Liberty Mutual Personal Insurance Company
America First Lloyd's Insurance Company	Liberty Mutual Technology Group, Inc.
American Economy Insurance	Liberty Northwest Insurance Corporation
American Fire and Casualty Company	Liberty Personal Insurance Company
American States Insurance Company	Liberty RE (Bermuda) Limited
American States Insurance Company of Texas	Liberty Sponsored Insurance (Vermont), Inc.
American States Lloyds Insurance Company	Liberty Surplus Insurance Corporation
American States Preferred Insurance Company	LIH-RE of America Corporation
Barrier Ridge LLC	LIU Specialty Insurance Agency Inc.
Berkeley Holding Company Associates, Inc.	LM General Insurance Company
Berkeley Management Corporation	LM Insurance Corporation
Capitol Court Corporation	LM Property and Casualty Insurance Company
Colorado Casualty Insurance Company	LMCRT-FRE-01 IC
Consolidated Insurance Company	LMHC Massachusetts Holdings Inc.
Diversified Settlements, Inc.	Managed Care Associates Inc.
Emerald City Insurance Agency, Inc.	Mid-American Fire & Casualty Company
Employers Insurance Company of Wausau	Nationale Borg Reinsurance N.V.
Excelsior Insurance Company	North Pacific Insurance Company
Excess Risk Reinsurance Inc.	Ocasco Budget, Inc.
F.B. Beattie & Co., Inc.	OCI Printing, Inc
First National Insurance Company of America	Ohio Casualty Corporation
First State Agency Inc.	Ohio Security Insurance Company
General America Corporation	Open Seas Solutions, Inc.
General America Corporation of Texas	Oregon Automobile Insurance Company
General Insurance Company of America	Peerless Indemnity Insurance Company
Golden Eagle Insurance Corporation	Peerless Insurance Company
Gulf States AIF, Inc.	Pilot Insurance Services, Inc
Hawkeye-Security Insurance Company	Rianoc Research Corporation
Indiana Insurance Company	S.C. Bellevue, Inc.
Insurance Company of Illinois	SAFECARE Company, Inc.
Ironshore Holdings (US) Inc.	Safeco Corporation
Ironshore Indemnity Inc.	Safeco General Agency, Inc.
Liberty Specialty Markets Bermuda Limited	Safeco Insurance Company of America
Ironshore Management Inc.	Safeco Insurance Company of Illinois
Ironshore Services Inc.	Safeco Insurance Company of Indiana
Ironshore Specialty Insurance Company	Safeco Insurance Company of Oregon
Ironshore Surety Holdings Inc.	Safeco Lloyds Insurance Company
LEXCO Limited	Safeco National Insurance Company
Liberty-USA Corporation	Safeco Properties, Inc.
Liberty Energy Canada, Inc.	Safeco Surplus Lines Insurance Company
Liberty Financial Services, Inc.	San Diego Insurance Company
Liberty Hospitality Group, Inc.	SCIT, Inc
Liberty Insurance Corporation	St. James Insurance Company Ltd.
Liberty Insurance Holdings, Inc.	The First Liberty Insurance Corporation
Liberty Insurance Underwriters Inc	The Midwestern Indemnity Company.
Liberty International Europe Inc.	The National Corporation
Liberty International Holdings Inc.	The Netherlands Insurance Company
Liberty Life Holdings Inc.	The Ohio Casualty Insurance Company
Liberty Lloyds of Texas Insurance Company	Wausau Business Insurance Company
Liberty Management Services, Inc.	Wausau General Insurance Company
Liberty Mexico Holdings Inc.	Wausau Underwriters Insurance Company
Liberty Mutual Agency Corporation	West American Insurance Company
Liberty Mutual Credit Risk Transfer PCC Inc.	Winmar Company, Inc
Liberty Mutual Fire Insurance Company	Winmar of the Desert, Inc.
Liberty Mutual Group Asset Management Inc.	Winmar Oregon, Inc
Liberty Mutual Group Inc.	Winmar-Metro, Inc
Liberty Mutual Holding Company Inc.	Workgrid Software, Inc.
Liberty Mutual Insurance Company	

F. The method of federal income tax allocation is subject to a written agreement. Allocation is based upon separate return calculations with credit applied for losses as appropriate. The Company has the enforceable right to recoup prior year payments in the event of future losses.

G. The Company does not expect the Federal and Foreign income tax loss contingencies, as determined in accordance with SSAP No. 5R, Liabilities, Contingencies and Impairments of Assets, with the modifications provided in SSAP No. 101, Income Taxes – A Replacement of SSAP No. 10R and SSAP No. 10, to significantly increase within twelve months of the reporting date.

H. Repatriation Transition Tax
Not Applicable

NOTES TO FINANCIAL STATEMENTS

I. Alternative Minimum Tax Credit

Not Applicable

10. Information Concerning Parent, Subsidiaries, Affiliates and Other Related Parties

A. All the outstanding shares of capital stock of the Company are held by Ironshore Holdings (U.S.) Inc. ("IHUS") a holding company incorporated in Delaware. IHUS is wholly owned by Liberty Mutual Insurance Company ("LMIC"), a Massachusetts insurance company. The ultimate parent of LMIC is Liberty Mutual Holding Company Inc. a Massachusetts company.

B. Transactions between the Company and its affiliates are listed on Schedule Y Part 2.

C. There have been no material transactions with the Company's affiliates during 2020.

D. At December 31, 2020, the Company reported a net \$171,064,556 due to affiliates. In general, the terms of the intercompany arrangements require settlement at least quarterly.

E. The Company has a limited agreement in place with an affiliated company to guarantee claim payments for a single program in the event the affiliated company cannot meet its claim payment obligations. The affiliate company collateralizes the obligations at 110% of the estimated claims value. The Company considers the possibility of payment extremely remote.

F. Refer to Note 26 for information regarding the Inter-Company Reinsurance Agreement.

The Company is a party to a management services agreement (the "Agreement") with Liberty Mutual Insurance Company ("LMIC"). Under the Agreement, LMIC may provide the Company with office space, supplies, equipment, telephone and wire services, the use of computers and similar machines and services of personnel employed by LMIC and LMGI. Services provided include, but are not limited to, risk underwriting, claims processing, claims adjustments, policyholder services, contract management and administration. LMIC is reimbursed for the cost of all services which it provides under the Agreement.

The Company is a party to a cash management agreement with Liberty Mutual Insurance Company ("LMIC") whereby LMIC provides services to the Company.

The Company is a party to an investment management agreement with Liberty Mutual Group Asset Management Inc. ("LMGAM"). Under the agreement, LMGAM provides services to the Company.

The Company is party to a Federal Tax Sharing Agreement between LMHC and affiliates (Refer to Note 9F).

G. The Company is a member of a holding company structure as illustrated in Schedule Y Part 1

H. The Company does not own shares of any upstream intermediate or ultimate parent, either directly or indirectly via a downstream subsidiary, controlled or affiliated company.

I. The Company does not own investments in subsidiary, controlled or affiliated companies.

J. The Company did not recognize any impairment write down for its SCA companies during the statement period

K. The Company does not use CARVM in calculating its investment in its foreign subsidiaries.

L. The Company does not hold any investments in downstream non-insurance holding companies.

M. All SCA Investments

Not Applicable

N. Investment in Insurance SCAs

Not Applicable

O. SCA Loss Tracking

Not Applicable

11 Debt

A. Debt (Including Capital Notes)

The Company has no debt, including capital notes.

B. FHLB (Federal Home Loan Bank) Agreements

NOTES TO FINANCIAL STATEMENTS

(1) The Company is a member of the Federal Home Loan Bank (FHLB) of Chicago. There were no outstanding borrowings as of December 31, 2020. The Company has determined the actual maximum borrowing capacity as \$75,000,000 per Board of Directors consent.

(2) FHLB Capital Stock

a. Aggregate Totals

1. Current Year

	(1) Total 2+3	(2) General Account	(3) Protected Cell Accounts
(a) Membership Stock - Class A	\$ 0	0	0
(b) Membership Stock - Class B	\$ 246,000	246,000	0
(c) Activity Stock	\$ 0	0	0
(d) Excess Stock	\$ 0	0	0
(e) Aggregate Total (a + b + c + d)	\$ 246,000	246,000	0
(f) Actual or est. Borrowing Capacity as Determined by the Insurer	\$ 75,000,000	X X X	X X X

2. Prior Year-end

	(1) Total 2+3	(2) General Account	(3) Protected Cell Accounts
(a) Membership Stock - Class A	\$ 0	0	0
(b) Membership Stock - Class B	\$ 299,400	299,400	0
(c) Activity Stock	\$ 0	0	0
(d) Excess Stock	\$ 0	0	0
(e) Aggregate Total (a + b + c + d)	\$ 299,400	299,400	0
(f) Actual or est. Borrowing Capacity as Determined by the Insurer	\$ 75,000,000	X X X	X X X

b. Membership Stock (Class A and B) Eligible and Not Eligible for Redemption

	1 Current Year Total (2 + 3 + 4 + 5 + 6)	2 Not Eligible for Redemption	Eligible for Redemption			
			3 Less Than 6 Months	4 6 Months to Less Than 1 Year	5 1 to Less Than 3 Years	6 3 to 5 Years
1. Class A	\$ 0	0	0	0	0	0
2. Class B	\$ 246,000	246,000	0	0	0	0

(3) Collateral Pledged to FHLB

a. Amount Pledged as of Reporting Date

	1 Fair Value	2 Carrying Value	3 Aggregate Total Borrowing
1. Current Year Total General and Protected Cell (Lines 2 + 3)	\$ 0	0	0
2. Current Year General Account (Total Pledged)	\$ 0	0	0
3. Current Year Protected Cell (Total Pledged)	\$ 0	0	0
4. Prior Year-end Total General and Protected Cell (Total Pledged)	\$ 0	0	0

b. Maximum Amount Pledged During Reporting Period

	1 Fair Value	2 Carrying Value	3 Amount Borrowed at Time of Max. Collateral
1. Current Year Total General and Protected Cell (Lines 2 + 3)	\$ 0	0	0
2. Current Year General Account (Maximum Pledged)	\$ 0	0	0
3. Current Year Protected Cell (Maximum Pledged)	\$ 0	0	0
4. Prior Year-end Total General and Protected Cell (Maximum Pledged)	\$ 0	0	0

(4) Borrowing From FHLB

a. Amount as of the Reporting Date

NOTES TO FINANCIAL STATEMENTS

1. Current Year

	1	2	3	4
	Total 2+3	General Account	Protected Cell Account	Funding Agreements Reserves Established
(a) Debt	\$ 0	0	0	X X X
(b) Funding Agreements	\$ 0	0	0	0
(c) Other	\$ 0	0	0	X X X
(d) Aggregate Total (a + b + c)	\$ 0	0	0	0

2. Prior Year-end

	1	2	3	4
	Total 2+3	General Account	Protected Cell Account	Funding Agreements Reserves Established
(a) Debt	\$ 0	0	0	X X X
(b) Funding Agreements	\$ 0	0	0	0
(c) Other	\$ 0	0	0	X X X
(d) Aggregate Total (a + b + c)	\$ 0	0	0	0

b. Maximum Amount during Reporting Period (Current Year)

	1	2	3
	Total 2+3	General Account	Protected Cell Accounts
1. Debt	\$ 0	0	0
2. Funding Agreements	\$ 0	0	0
3. Other	\$ 0	0	0
4. Aggregate Total (1 + 2 + 3)	\$ 0	0	0

c. FHLB- Prepayment Obligations

	Does the company have prepayment obligations under the following arrangements (YES/NO)?
1. Debt	NO
2. Funding Agreements	
3. Other	

C. There were no outstanding borrowings as of December 31, 2020

12. Retirement Plans, Deferred Compensation, Postemployment Benefits and Compensated Absences and Other Postretirement Benefit Plans

A. Defined Benefit Plans

The Company does not have any direct employees and therefore, does not have any direct obligations for a defined benefit plan, deferred compensation arrangements, compensated absences or other postretirement benefit plans. Services for the operation of the Company are provided under provisions of the management services agreements, as described in Note 10F.

13 Capital and Surplus, Dividend Restrictions and Quasi-Reorganizations

A. The Company has 50,000 shares authorized, issued and outstanding as of December 31, 2020. All shares have a stated par value of \$100.

B. Preferred Stock

Not applicable.

C. There are no dividend restrictions.

D. The Company did not pay any dividend to its parent in 2020.

E. The maximum amount of dividends which can be paid by Illinois-domiciled insurance companies to shareholders without the prior approval of the Insurance Director is the greater of (a) 10% of surplus or (b) net income, subject to the availability of accumulated undistributed earnings. The Company cannot pay a dividend in 2021 without the prior approval of the Illinois Insurance Director, as its unassigned surplus is negative.

F. The Company does not have restricted unassigned surplus.

G. The Company had no advances to surplus.

H. The Company does not hold stock for special purposes.

NOTES TO FINANCIAL STATEMENTS

- I. The Company does not hold special surplus funds.
- J. The portion of unassigned funds (surplus) represented or reduced by cumulative unrealized gains and losses: \$ (267,627)
after applicable deferred taxes of \$56,202
- K. The company issued the following surplus debentures or similar obligations:
Not Applicable
- L. The impact of any restatement due to prior quasi-reorganizations is as follows:
Not Applicable
- M. Quasi-reorganization (effective date)
Not applicable

14. Liabilities, Contingencies and Assessments

A. Contingent Commitments

Refer to Note 10E

- (1) Total SSAP No. 97 - Investments in Subsidiary, Control Partnerships and Limited Liability Companies contingent \$ 0

B. Assessments

The Company is subject to guaranty fund and other assessments by the states in which it writes business. Guaranty fund assessments and premium-based assessments are presumed probable when the premium on which the assessments are expected to be based are written. In the case of loss-based assessments, the event that obligates the entity is an entity incurring the losses on which the assessments are expected to be based.

- (1) The Company has no net guaranty fund or other assessment liabilities to report. Refer to Note 26.

C. Gain Contingencies

Not Applicable

D. Claims related extra contractual obligations and bad faith losses stemming from lawsuits

Claims related ECO and bad faith losses paid during the reporting period \$ 49,598

Number of claims where amounts were paid to settle claims related extra contractual obligations or bad faith claims resulting from lawsuits during the reporting period: (a) 0-25 claims (b) 26-50 claims (c) 51-100 claims (d) 101-500 claims (e) More than 500 claims

Answer (A, B, C, D, or E): A

Indicate whether claim count information is disclosed (f) per claim or (g) per claimant

Answer (F or G): F

E. Product Warranties

Not Applicable

F. Joint and Several Liabilities

The Company is not a participant in any joint and several liabilities.

G. All Other Contingencies

Lawsuits arise against the Company in the normal course of business. Contingent liabilities arising from litigation, income taxes, and other matters are not considered material in relation to the financial position of the Company.

As disclosed in Note 9 F, the Company is a member of a controlled group for federal income tax purposes, and that group includes LMGI. LMGI is the plan sponsor of the Liberty Mutual Retirement Benefit Plan, a qualified plan under federal law. Pursuant to federal law, if LMGI has not made the minimum required contributions with respect to the Liberty Mutual Retirement Benefit Plan, the Company, jointly and severally with all other members of the controlled group, would be contingently liable to make such contributions.

The Company routinely assesses the collectability of its premium receivable balances. The Company does not believe the amounts in excess of non-admitted amounts are material.

15. Leases.

A. Lessee Leasing Arrangements

- a. The Company has no net lease obligations. Refer to Note 26.

NOTES TO FINANCIAL STATEMENTS

- B. Leasing as a Significant Part of Lessors's Business Activities
Not Applicable

16. Information About Financial Instruments With Off-Balance Sheet Risk And Financial Instruments With Concentrations of Credit Risk

The Company is not exposed to financial instruments with off-balance sheet risk or concentration of credit risk.

Not Applicable

17. Sale, Transfer and Servicing of Financial Assets and Extinguishments of Liabilities

- A. Transfers of Receivables Reported as Sales

(1) The Company did not have any transfers of receivables reported as sales.

(2) Not applicable

- B. Transfers and Servicing of Financial Assets

(1)

- C. Wash Sales:

Not Applicable

18. Gain or Loss to the Reporting Entity from Uninsured Plans and the Uninsured Portion of Partially Insured Plans

Not Applicable

19. Direct Premium Written/Produced by Managing General Agents/Third Party Administrators

The Company has no direct premiums written or produced through managing general agents or third party administrators.

20. Fair Value Measurements

- A. Inputs Used for Assets and Liabilities Measured at Fair Value

Fair value is the price that would be received to sell an asset or would be paid to transfer a liability in an orderly transaction between market participants at the measurement date. In determining fair value, the Company primarily uses the market approach which generally utilizes market transaction data for identical or similar instruments.

Included in various investment related line items in the financial statements are certain financial instruments carried at fair value. Other financial instruments are periodically measured at fair value, such as when impaired, or, for certain bonds and preferred stock, when carried at the lower of cost or market.

The hierarchy level assigned to each security in the Company's portfolio is based on the Company's assessment of the transparency and reliability of the inputs used in the valuation of each instrument at the measurement date. The highest priority is given to unadjusted quoted prices in active active markets for identical assets (Level 1 measurements) and the lowest priority to unobservable inputs (Level 3 measurements). Securities are classified based on the lowest level of input that is significant to the fair value measurement. The Company recognizes transfers between levels at the end of each reporting period. The three hierarchy levels are defined as follows:

- Level 1 — Valuations based on unadjusted observable quoted market prices in active markets for identical assets or liabilities that the Company has the ability to access.
- Level 2 — Valuations based on observable inputs (other than Level 1 prices), such as quoted prices for similar assets or liabilities at the measurement date, quoted prices in markets that are not active, or other inputs that are observable, either directly or indirectly.
- Level 3 — Valuations based on inputs that are unobservable and significant to the overall fair value measurement and involve measurement judgment. The unobservable inputs reflect the Company's estimates of the assumptions that market participants would use in valuing the assets and liabilities.

- B. Other Fair Value Disclosures

Not Applicable

- C. Aggregate Fair Value of All Financial Instruments

Type of Financial Instrument	Aggregate Fair Value	Admitted Assets	(Level 1)	(Level 2)	(Level 3)	Net Asset Value (NAV)	Not Practicable (Carrying Value)
01 Cash, Cash Equivalents & Short Term	\$ 18,340,623	18,340,623	(3,075,782)	20,405,062	0	1,011,342	0
02 Bonds	\$ 124,424,723	117,164,139	29,720,778	94,703,945	0	0	0
03 Preferred Stock	\$ 0	0	0	0	0	0	0
04 Common Stock	\$ 246,000	246,000	0	0	246,000	0	0
05 Securities Lending	\$ 0	0	0	0	0	0	0
06 Mortgage Loans	\$ 0	0	0	0	0	0	0
Total	\$ 143,011,346	135,750,762	26,644,996	115,109,007	246,000	1,011,342	0

NOTES TO FINANCIAL STATEMENTS

Type of Financial Instrument	Aggregate Fair Value	Admitted Assets	(Level 1)	(Level 2)	(Level 3)	Net Asset Value (NAV)	Practicable (Carrying Value)
07 Surplus Notes	\$ 0	0	0	0	0	0	0
Total	\$ 143,011,346	135,750,762	26,644,996	115,109,007	246,000	1,011,342	0

D. Reasons Not Practical to Estimate Fair Value

Not Applicable

E. Instruments Measures at Net Asset Value (NAV)

(1) The Company elected to use NAV for all money market mutual funds in lieu of fair value as NAV is more readily available. These funds are backed by high quality, very liquid short-term instruments and the probability is remote that the funds would be sold for a value other than NAV.

21. Other items

A. Unusual or Infrequent Items

The Company has no unusual or infrequent items to report.

B. Troubled Debt Restructuring

Not Applicable

C. Other Disclosures

1. Interrogatory 6.1

The Company cedes 100% of its business to Liberty Mutual Insurance Company, the lead company in the Liberty Mutual Pool. Liberty Mutual Insurance Company purchases external catastrophe reinsurance coverage.

Interrogatory 6.2

As a member of the Liberty Intercompany Pool, the Pool employs industry recognized catastrophe modeling software to estimate the Probable Maximum Loss. For property exposures, we utilize RMS's RiskLink v16.0 and AIR's Touchstone v4.2 software. For workers' compensation, Liberty Mutual utilizes RiskLink v16.0 from RMS.

Interrogatory 6.3

The Company cedes 100% of its business to Liberty Mutual Insurance Company, the lead company in the Liberty Mutual Pool. Liberty Mutual Insurance Company purchases external catastrophe reinsurance coverage.

2. Florida Special Disability Trust Fund

Not applicable.

D. Business Interruption Insurance Recoveries

The Company does not purchase business interruption coverage.

E. State Transferable Tax Credits

(1) Description of State Transferrable Tax Credits

The Company does not hold state transferable and/or non-transferable tax credits.

F. Subprime-Mortgage-Related Risk Exposure

(1) The Company has not purchased securities characterized by the market as subprime. The Company looks at such factors as average FICO scores, loan to value ratios, and levels of documentation when evaluating securities.

(2) Direct exposure through investments in subprime mortgage loans.

	1	2	3	4	5
	Book/Adjusted Carrying Value (excluding interest)	Fair Value	Value of Land and Buildings	Other-Than- Temporary Impairment Losses Recognized	Default Rate
a. Mortgages in the process of foreclosure	0	0	0	0	0
b. Mortgages in good standing	0	0	0	0	0
c. Mortgages with restructure terms	0	0	0	0	0
d. Total	0	0	0	0	0

NOTES TO FINANCIAL STATEMENTS

(3) Direct exposure through other investments.

	1	2	3	4
	Actual Cost	Book/Adjusted Carrying Value (excluding interest)	Fair Value	Other-Than- Temporary Impairment Losses Recognized
a. Residential mortgage-backed securities	0	0	0	0
b. Commercial mortgage-backed securities	0	0	0	0
c. Collateralized debt obligations	0	0	0	0
d. Structured securities	0	0	0	0
e. Equity investment in SCAs *	0	0	0	0
f. Other assets	0	0	0	0
g. Total	0	0	0	0

*ABC Company's subsidiary XYZ Company has investments in subprime mortgages. These investments comprise ____% of the companies invested assets. 0.000

(4) Underwriting exposure to subprime mortgage risk through Mortgage Guaranty or Financial Guaranty insurance coverage.

	1	2	3	4
	Losses Paid in the Current Year	Losses Incurred in the Current Year	Case Reserves at End of Current Period	IBNR Reserves at End of Current Period
a. Mortgage Guaranty Coverage	0	0	0	0
b. Financial Guaranty Coverage	0	0	0	0
c. Other Lines (specify):	0	0	0	0
	0	0	0	0
	0	0	0	0
	0	0	0	0
	0	0	0	0
	0	0	0	0
	0	0	0	0
	0	0	0	0
	0	0	0	0
	0	0	0	0
	0	0	0	0
d. Total	0	0	0	0

G. Insurance-Linked Securities (ILS) Contracts

Not Applicable

H. The Amount That Could Be Realized on Life Insurance Where the Reporting Entity is Owner and Beneficiary or Has Otherwise Obtained Rights to Control the Policy

Not Applicable

22. Events Subsequent

The Company evaluated subsequent events through February 21, 2021, the date the annual statement was available to be issued.

There were no events subsequent to December 31, 2020 that would require disclosure.

The Company did not receive any assessments under the Affordable Care Act.

	Current Year	Prior Year
A. Did the reporting entity write accident and health insurance premium that is subject to Section 9010 of the Federal Affordable Care Act (YES/NO)?	_____	_____
	Not Applicable	

23. Reinsurance

A. Unsecured Reinsurance Recoverables

Excluding amounts arising pursuant to the Liberty Mutual Amended and Restated Intercompany Reinsurance Agreement, the following are the unsecured reinsurance recoverable or ceded unearned premium of an individual reinsurer which exceed 3% of policyholder's surplus.

Reinsurer	NAIC No.	Federal ID No.	Reinsurer

NOTES TO FINANCIAL STATEMENTS

Transatlantic Reinsurance Company	19453	13-5616275	52077000
Liberty Mutual Group:			
Liberty Mutual Insurance Company	23043	04-1543470	
Lloyd's Syndicate 4472		AA-1126006	
Lloyd's Syndicate 4000		AA-1126005	
Liberty Mutual Insurance Europe Limited		AA-1120855	
Ironshore Insurance Ltd.		AA-3190917	
Total Liberty Mutual Group			26963000
Swiss Re Group:			
Swiss Reinsurance America Corporation	25364	13-1675535	
Swiss Reinsurance Company Limited		AA-1460146	
Total Swiss Re Group			26471000
Lexon Surety Group:			
Lexon Insurance Company	13307	76-0128873	
Bond Safeguard Insurance Company	27081	36-2761729	
Total Lexon Surety Group			21847000
Partner Re Group:			
Partner Reinsurance Company of the U.S.	38636	13-3031176	
Partner Reinsurance Company Ltd		AA-3190686	
Partner Reinsurance Europe Limited		AA-1780078	
Total Partner Re Group			21217000
Markel Group:			
Markel Global Reinsurance Company	10829	06-1481194	
Markel Insurance Company	38970	36-3101262	
Total Markel Group:			12199000
Munich Re Group:			
Munich Reinsurance America, Inc.	10227	13-4924125	
Munich Reinsurance Company		AA-1340165	
Great Lakes Reinsurance (UK) PLC		AA-1120697	
Hartford Steam Boiler Inspec & Ins Co CT	29890	06-1240885	
Total Munich Re Group			10159000
AIG Group:			
National Union Fire Insurance Company of Pittsburg, PA	19445	25-0687550	
AIG Europe Limited		AA-1120841	
Total AIG Group			9344000
Sompo Group:			
Endurance Assurance Corporation	11551	35-2293075	
Lloyd's Syndicate 4444		AA-1126004	
Lloyd's Syndicate 958		AA-1126958	
Total Sompo Group			8288000
Total:			188565000

B. Reinsurance Recoverable in Dispute

Not Applicable

C. REINSURANCE ASSUMED AND CEDED

(1) Report the maximum amount of return commission which would have been due reinsurers...

	Assumed		Ceded		Net	
	Premium Reserve (1)	Commission Equity (2)	Premium Reserve (3)	Commission Equity (4)	Premium Reserve (5)	Commission Equity (6)
a. Affiliates	\$ 1,052,089	63,296	147,154,489	22,232,383	(146,102,400)	(22,169,087)
b. All Other	\$ 15,467,514	1,324,969	0	0	15,467,514	1,324,969
c. TOTAL	\$ 16,519,603	1,388,265	147,154,489	22,232,383	(130,634,886)	(20,844,118)
d. Direct Unearned Premium Reserve	\$ 130,635,125					

Line (c) of Column 3 must Equal page 3, Line 9, first inside amt.

(2) Additional or return commission ... on any form of profit sharing arrangements

Certain contracts provide for additional or return commissions based on the actual loss experience of the produced or reinsured business. Amounts accrued at December 31, 2020 are as follows:

(3) Reinsurance

	Covered Exposure	Ultimate Exposure Amt	Fair Value of Assets 12/31	Initial Contract Date	Maturity Date
Protected Cell Name					
(99) Totals Lines 23C0301 through 23C0305		0	0		

D. UNCOLLECTIBLE REINSURANCE

NOTES TO FINANCIAL STATEMENTS

Not Applicable

E. COMMUTATION OF CEDED REINSURANCE

Not Applicable

F. RETROACTIVE REINSURANCE

(1)

		Reported Company	
		As:	
		Assumed	Ceded
a. Reserves Transferred:			
1. Initial Reserves	\$	4,903,292	4,903,292
2. Adjustments - Prior Year(s)	\$	(3,402,758)	(3,402,758)
3. Adjustments - Current Year	\$	(624,191)	(624,191)
4. Current Total	\$	876,343	876,343
b. Consideration Paid or Received:			
1. Initial Consideration	\$	5,079,360	5,079,360
2. Adjustments - Prior Year(s)	\$	0	0
3. Adjustments - Current Year	\$	0	0
4. Current Total	\$	5,079,360	5,079,360
c. Paid Losses Reimbursed or Recovered:			
1. Prior Year(s)	\$	4,759,333	4,759,333
2. Current Year	\$	795,622	795,622
3. Current Total	\$	5,554,955	5,554,955
d. Special Surplus from Retroactive Reinsurance:			
1. Initial Surplus Gain or Loss	\$	(820,496)	820,496
2. Adjustments - Prior Year(s)	\$	(360,011)	360,011
3. Adjustments - Current Year	\$	(171,431)	171,431
4. Current Year Restricted Surplus	\$	0	0
5. Cumulative Total Transferred to Unassigned Funds	\$	(1,351,938)	1,351,938
e. All cedents and reinsurers involved in all transactions included in summary totals above:			

Column 1: Cedents and Reinsurers Company Name		Assumed Amt	Ceded Amt
01	Ark Indemnity Company, 98-0404349	\$ 876,343	0
02	Liberty Mutual Insurance Company, 23043	\$ 0	876,343
Total*		\$ 876,343	876,343

* Total amounts must agree with totals in a. 4 above. Include the NAIC Company Code or Alien Insurer Identification Number for each ins

f.

1. Total Paid Loss/LAE amounts recoverable (for authorized, and certified reinsurers), and for amounts recoverable the c (for authorized, unauthorized and certified reinsurers) as respects amounts recoverable from unauthorized reinsurer

Authorized Reinsurers Total: Company Name

--

Total

Total Paid/Loss/L	Amount over 90
Recoverable	days overdue
\$ 0	0

2. Total Paid Loss/LAE amounts recoverable (for authorized, and certified reinsurers), and for amounts recoverable the c (for authorized, unauthorized and certified reinsurers) as respects amounts recoverable from unauthorized reinsurer

Unauthorized Reinsurers Total: Company Name

--

Total

Total Paid/Loss/L	Amt over 90	Collateral
Recoverable	Days Overdue	Held
\$ 0	0	0

3. Total Paid Loss/LAE amounts recoverable (for authorized, and certified reinsurers), and for amounts recoverable the c (for authorized, unauthorized and certified reinsurers) as respects amounts recoverable from unauthorized reinsurer

Total Paid/Loss/L Amt over 90 Collateral

NOTES TO FINANCIAL STATEMENTS

respects amounts recoverable from unauthorized reinsurers: Total Paid/Loss/LAE Amt over 90 Collateral
Certified Reinsurers Total: Company Name Recoverable Days Overdue Held

Total	\$	0	0	0

4. Total Paid Loss/LAE amounts recoverable (for authorized, and certified reinsurers), and for amounts recoverable the c (for authorized, unauthorized and certified reinsurers) as respects amounts recoverable from unauthorized reinsurer

Total	\$	0	0	0

g. G. Reinsurance Accounted for as a Deposit

The Company entered into a reinsurance agreement determined to be of a deposit type nature on January 1, 2009. Upon inception of the contract, the company recorded a deposit asset of \$769,670. As of December 31, 2019, the Company has a remaining deposit balance of \$122,223.

H. Disclosures for the Transfer of Property and Casualty Run-off Agreement

The Company has not entered into any agreements which have been approved by their domiciliary regulator and have qualified pursuant to SSAP No. 62R, Property and Casualty Reinsurance to receive P&C Run-off Accounting Treatment.

I. Certified Reinsurer Rating Downgraded or Status Subject to Revocation

Not Applicable

J. Reinsurance Agreements Qualifying for Reinsurer Aggregation

Not Applicable

24. Retrospectively Rated Contracts & Contracts Subject to Redetermination

- A. The Company does not have net accrued retrospective premiums. Refer to Note 26.
- B. The Company did not receive any assessments under the Affordable Care Act.

25. Changes in Incurred Losses and Loss Adjustment Expenses

- A. The Company has no net exposure to changes in incurred losses and loss adjustment expenses. Refer to Note 26.

26. Intercompany Pooling Arrangements

The Company is a member of the Liberty Mutual Second Amended and Restated Intercompany Reinsurance Agreement consisting of the following affiliated companies:

		NAIC Company Number	Pooling Companies	Line of Business
Lead Company:	Liberty Mutual Insurance Company ("LMIC")	23043	50%	All Lines
Affiliated	Peerless Insurance Company ("PIC")	24198	20%	All Lines
Pool Companies:	Employers Insurance Company of Wausau ("EICOW")	21458	8%	All Lines
	Liberty Mutual Fire Insurance Company ("LMFIC")	23035	8%	All Lines
	The Ohio Casualty Insurance Company ("OCIC")	24074	8%	All Lines
	Safeco Insurance Company of America ("SICOA")	24740	6%	All Lines
	American Economy Insurance Company ("AEIC")	19690	0%	All Lines
	America First Insurance Company ("AFIC")	12696	0%	All Lines
	America Fire and Casualty Company ("AFCIC")	24066	0%	All Lines
	America First Lloyd's Insurance Company ("AFLIC")	11526	0%	All Lines
	American States Insurance Company ("ASIC")	19704	0%	All Lines
	American States Insurance Company of Texas ("ASICT")	19712	0%	All Lines
	American States Lloyd's Insurance Company ("ASLCO")	31933	0%	All Lines
	American States Preferred Insurance Company ("ASPC")	37214	0%	All Lines
	Colorado Casualty Insurance Company ("CCIC")	41785	0%	All Lines
	Consolidated Insurance Company ("CIC")	22640	0%	All Lines
	Excelsior Insurance Company ("EIC")	11045	0%	All Lines
	First National Insurance Company of America ("FNICA")	24724	0%	All Lines
	The First Liberty Insurance Corporation ("FST")	33588	0%	All Lines
	General Insurance Company of America ("GICA")	24732	0%	All Lines
	Golden Eagle Insurance Corporation ("GEIC")	10836	0%	All Lines

NOTES TO FINANCIAL STATEMENTS

	Hawkeye-Security Insurance Company ("HSIC")	36919	0%	All Lines
	Insurance Company of Illinois ("ICIL")	26700	0%	All Lines
	Indiana Insurance Company ("IIC")	22659	0%	All Lines
	Ironshore Indemnity Inc. ("III")	23647	0%	All Lines
	Ironshore Specialty Insurance Company ("ISIC")	25445	0%	All Lines
	Liberty Insurance Corporation ("LIC")	42404	0%	All Lines
	Liberty Insurance Underwriters, Inc. ("LIU")	19917	0%	All Lines
	Liberty County Mutual Insurance Company ("LCMIC")	19544	0%	All Lines
	LM General Insurance Company ("LMGIC")	36447	0%	All Lines
	Liberty Lloyd's of Texas Insurance Company ("LLOT")	11041	0%	All Lines
	LM Insurance Corporation ("LMC")	33600	0%	All Lines
	Liberty Mutual Mid-Atlantic Insurance Company ("LMM")	14486	0%	All Lines
	Liberty Mutual Personal Insurance Company ("LMPICO")	12484	0%	All Lines
	Liberty Northwest Insurance Corporation ("LNW")	41939	0%	All Lines
	Liberty Personal Insurance Company ("LPIC")	11746	0%	All Lines
	Liberty Surplus Insurance Corporation ("LSI")	10725	0%	All Lines
	Mid-American Fire & Casualty Company ("MAFCC")	23507	0%	All Lines
	Montgomery Mutual Insurance Company ("MMIC")	14613	0%	All Lines
	The Midwestern Indemnity Company ("MWIC")	23515	0%	All Lines
	National Insurance Association ("NIA")	27944	0%	All Lines
	The Netherlands Insurance Company ("NIC")	24171	0%	All Lines
	North Pacific Insurance Company ("NPIC")	23892	0%	All Lines
	Ohio Security Insurance Company ("OSIC")	24082	0%	All Lines
	Oregon Automobile Insurance Company ("OAIC")	23922	0%	All Lines
	Peerless Indemnity Insurance Company ("PIIC")	18333	0%	All Lines
	Safeco Insurance Company of Illinois ("SICIL")	39012	0%	All Lines
	Safeco Insurance Company of Indiana ("SICIN")	11215	0%	All Lines
	Safeco Insurance Company of Oregon ("SICOR")	11071	0%	All Lines
	Safeco Lloyds Insurance Company ("SLICO")	11070	0%	All Lines
	Safeco National Insurance Company ("SNIC")	24759	0%	All Lines
	Safeco Surplus Lines Insurance Company ("SSLIC")	11100	0%	All Lines
	Wausau Business Insurance Company ("WBIC")	26069	0%	All Lines
	Wausau General Insurance Company ("WGIC")	26425	0%	All Lines
	Wausau Underwriters Insurance Company ("WUIC")	26042	0%	All Lines
100% Quota Share	West American Insurance Company ("WAIC")	44393	0%	All Lines
Affiliated Companies:	LM Property and Casualty Insurance Company ("LMPA")	32352	0%	All Lines

Under the terms of the Reinsurance Agreements, the sequence of transactions is as follows:

- A. Except for WBIC, WGIC and WUIC, each Affiliated Pool Company cedes its underwriting activity to the Lead Company. WBIC, WGIC and WUIC cede 100% of its direct underwriting activity to EICOW.
- B. After recording the assumed affiliate transactions noted above, the Lead Company records 100% of its external assumed and ceded reinsurance activity.
- C. The Lead Company's remaining underwriting activity, after processing all internal and external reinsurance, is retroceded to the pool members in accordance with each company's pool participation percentage, as noted above.
- D. There were no members that are parties to reinsurance agreements with non-affiliated reinsurers covering business subject to the pooling agreement and have a contractual right of direct recovery from the non-affiliated reinsurer per the terms of such reinsurance agreements.
- E. There were no discrepancies between entries regarding pooled business on the assumed and ceded reinsurance schedules of the Lead Company and corresponding entries on the assumed and ceded reinsurance schedules of other pooled participants.
- F. The write-off of uncollectible reinsurance is pooled and the provision for reinsurance is recognized by the entity placing the outbound external reinsurance.
- G. Amounts due (to)/from affiliated entities participating in the Liberty Mutual Second Amended and Restated Intercompany Reinsurance Agreement as of December 31, 2020:

Affiliate	Amount
Liberty Mutual Insurance Company	\$ 96,189,553

27. Structured Settlements

- A. The Company has no net exposure to contingent liabilities from the purchase of annuities. Refer to Note 26.
- B. Not applicable.

28. Health Care Receivables

Not Applicable

NOTES TO FINANCIAL STATEMENTS

29. Participating Policies

Not Applicable

30. Premium Deficiency Reserves

		(1)
01. Liability carried for premium deficiency reserves	\$	0
02. Date of the most recent evaluation of this liability		12/31/2020

03. Was anticipated investment income utilized in the calculation? Yes [] No [X] No

31. High Deductible

Not Applicable

32. Discounting of Liabilities for Unpaid Losses or Unpaid Loss Adjustment Expenses

The Company has no net loss and loss adjustment expense reserves. Refer to Note 26.

33. Asbestos/Environmental Reserves

A. Does the company have on the books, or has it ever written an insured for which you have identified a potential for the existence of, a liability due to asbestos I

The Company has no net exposure to asbestos and environmental claims. Refer to Note 26.

34. Subscriber Savings Accounts

Not Applicable

35. Multiple Peril Crop Insurance

Not Applicable

36. Financial Guaranty Insurance

Not Applicable

GENERAL INTERROGATORIES

PART 1 – COMMON INTERROGATORIES

GENERAL

- 1.1 Is the reporting entity a member of an Insurance Holding Company System consisting of two or more affiliated persons, one or more of which is an insurer? Yes No
- If yes, complete Schedule Y, Parts 1, 1A and 2.
- 1.2 If yes, did the reporting entity register and file with its domiciliary State Insurance Commissioner, Director or Superintendent or with such regulatory official of the state of domicile of the principal insurer in the Holding Company System, a registration statement providing disclosure substantially similar to the standards adopted by the National Association of Insurance Commissioners (NAIC) in its Model Insurance Holding Company System Regulatory Act and model regulations pertaining thereto, or is the reporting entity subject to standards and disclosure requirements substantially similar to those required by such Act and regulations? Yes No N/A
- 1.3 State Regulating? Illinois
- 1.4 Is the reporting entity publicly traded or a member of a publicly traded group? Yes No
- 1.5 If the response to 1.4 is yes, provide the CIK (Central Index Key) code issued by the SEC for the entity/group.
- 2.1 Has any change been made during the year of this statement in the charter, by-laws, articles of incorporation, or deed of settlement of the reporting entity? Yes No
- 2.2 If yes, date of change: 12/04/2020
- 3.1 State as of what date the latest financial examination of the reporting entity was made or is being made. 12/31/2018
- 3.2 State the as of date that the latest financial examination report became available from either the state of domicile or the reporting entity. This date should be the date of the examined balance sheet and not the date the report was completed or released. 12/31/2018
- 3.3 State as of what date the latest financial examination report became available to other states or the public from either the state of domicile or the reporting entity. This is the release date or completion date of the examination report and not the date of the examination (balance sheet date). 06/25/2020
- 3.4 By what department or departments?
Minnesota Department of Commerce

- 3.5 Have all financial statement adjustments within the latest financial examination report been accounted for in a subsequent financial statement filed with departments? Yes No N/A
- 3.6 Have all of the recommendations within the latest financial examination report been complied with? Yes No N/A
- 4.1 During the period covered by this statement, did any agent, broker, sales representative, non-affiliated sales/service organization or any combination thereof under common control (other than salaried employees of the reporting entity) receive credit or commissions for or control a substantial part (more than 20 percent of any major line of business measured on direct premiums) of:
- 4.11 sales of new business? Yes No
- 4.12 renewals? Yes No
- 4.2 During the period covered by this statement, did any sales/service organization owned in whole or in part by the reporting entity or an affiliate, receive credit or commissions for or control a substantial part (more than 20 percent of any major line of business measured on direct premiums) of:
- 4.21 sales of new business? Yes No
- 4.22 renewals? Yes No
- 5.1 Has the reporting entity been a party to a merger or consolidation during the period covered by this statement? Yes No
- If yes, complete and file the merger history data file with the NAIC.

GENERAL INTERROGATORIES

5.2 If yes, provide the name of the entity, NAIC Company Code, and state of domicile (use two letter state abbreviation) for any entity that has ceased to exist as a result of the merger or consolidation.

1 Name of Entity	2 NAIC Company Code	3 State of Domicile
.....
.....

6.1 Has the reporting entity had any Certificates of Authority, licenses or registrations (including corporate registration, if applicable) suspended or revoked by any governmental entity during the reporting period? Yes [] No [X]

6.2 If yes, give full information:

7.1 Does any foreign (non-United States) person or entity directly or indirectly control 10% or more of the reporting entity? Yes [] No [X]

7.2 If yes,
 7.21 State the percentage of foreign control. _____ 0.00 %
 7.22 State the nationality(s) of the foreign person(s) or entity(s); or if the entity is a mutual or reciprocal, the nationality of its manager or attorney-in-fact and identify the type of entity(s) (e.g., individual, corporation, government, manager or attorney-in-fact).

1 Nationality	2 Type of Entity
.....
.....

8.1 Is the company a subsidiary of a bank holding company regulated by the Federal Reserve Board? Yes [] No [X]

8.2 If response to 8.1 is yes, please identify the name of the bank holding company.

8.3 Is the company affiliated with one or more banks, thrifts or securities firms? Yes [] No [X]

8.4 If response to 8.3 is yes, please provide the names and locations (city and state of the main office) of any affiliates regulated by a federal financial regulatory services agency [i.e. the Federal Reserve Board (FRB), the Office of the Comptroller of the Currency (OCC), the Federal Deposit Insurance Corporation (FDIC) and the Securities Exchange Commission (SEC)] and identify the affiliate's primary federal regulator.

1 Affiliate Name	2 Location (City, State)	3 FRB	4 OCC	5 FDIC	6 SEC
.....
.....

9. What is the name and address of the independent certified public accountant or accounting firm retained to conduct the annual audit?
 Ernst & Young, LLP
 200 Clarendon Street
 Boston, MA 02116

10.1 Has the insurer been granted any exemptions to the prohibited non-audit services provided by the certified independent public accountant requirements as allowed in Section 7H of the Annual Financial Reporting Model Regulation (Model Audit Rule), or substantially similar state law or regulation? Yes [] No [X]

10.2 If response to 10.1 is yes, provide information related to this exemption:

GENERAL INTERROGATORIES

10.3 Has the insurer been granted any exemptions related to the other requirements of the Annual Financial Reporting Model Regulation as allowed for in Section 18A of the Model Regulation, or substantially similar state law or regulation? Yes [] No [X]

10.4 If response to 10.3 is yes, provide information related to this exemption:

10.5 Has the reporting entity established an Audit Committee in compliance with the domiciliary state insurance laws? Yes [X] No [] N/A []

10.6 If the response to 10.5 is no or n/a, please explain.

11. What is the name, address and affiliation (officer/employee of the reporting entity or actuary/consultant associated with an actuarial consulting firm) of the individual providing the statement of actuarial opinion/certification?
 Stephanie Neyenhouse FCAS, MAAA
 175 Berkeley Street, Boston, MA 02116
 Vice President and Chief Actuary, Liberty Mutual Group Inc.

12.1 Does the reporting entity own any securities of a real estate holding company or otherwise hold real estate indirectly? Yes [] No [X]

12.11 Name of real estate holding company	
12.12 Number of parcels involved	0
12.13 Total book/adjusted carrying value	\$ 0

12.2 If yes, provide explanation:

13. FOR UNITED STATES BRANCHES OF ALIEN REPORTING ENTITIES ONLY:

13.1 What changes have been made during the year in the United States manager or the United States trustees of the reporting entity?

13.2 Does this statement contain all business transacted for the reporting entity through its United States Branch on risks wherever located? Yes [] No [X]

13.3 Have there been any changes made to any of the trust indentures during the year? Yes [] No [X]

13.4 If answer to (13.3) is yes, has the domiciliary or entry state approved the changes? Yes [] No [] N/A [X]

14.1 Are the senior officers (principal executive officer, principal financial officer, principal accounting officer or controller, or persons performing similar functions) of the reporting entity subject to a code of ethics, which includes the following standards?
 a. Honest and ethical conduct, including the ethical handling of actual or apparent conflicts of interest between personal and professional relationships;
 b. Full, fair, accurate, timely and understandable disclosure in the periodic reports required to be filed by the reporting entity;
 c. Compliance with applicable governmental laws, rules, and regulations;
 d. The prompt internal reporting of violations to an appropriate person or persons identified in the code; and
 e. Accountability for adherence to the code. Yes [X] No []

14.11 If the response to 14.1 is no, please explain:

GENERAL INTERROGATORIES

14.2 Has the code of ethics for senior managers been amended? Yes [] No [X]

14.21 If the response to 14.2 is yes, provide information related to amendment(s).

.....

14.3 Have any provisions of the code of ethics been waived for any of the specified officers? Yes [] No [X]

14.31 If the response to 14.3 is yes, provide the nature of any waiver(s).

.....

15.1 Is the reporting entity the beneficiary of a Letter of Credit that is unrelated to reinsurance where the issuing or confirming bank is not on the SVO Bank List? Yes [] No [X]

15.2 If the response to 15.1 is yes, indicate the American Bankers Association (ABA) Routing Number and the name of the issuing or confirming bank of the Letter of Credit and describe the circumstances in which the Letter of Credit is triggered.

1 American Bankers Association (ABA) Routing Number	2 Issuing or Confirming Bank Name	3 Circumstances That Can Trigger the Lette	4 Amount
0			0
0			0
0			0

BOARD OF DIRECTORS

16. Is the purchase or sale of all investments of the reporting entity passed upon either by the board of directors or a subordinate committee thereof? Yes [X] No []

17. Does the reporting entity keep a complete permanent record of the proceedings of its board of directors and all subordinate committees thereof? Yes [X] No []

18. Has the reporting entity an established procedure for disclosure to its board of directors or trustees of any material interest or affiliation on the part of any of its officers, directors, trustees or responsible employees that is in conflict or is likely to conflict with the official duties of such person? Yes [X] No []

FINANCIAL

19. Has this statement been prepared using a basis of accounting other than Statutory Accounting Principles (e.g., Generally Accepted Accounting Principles)? Yes [] No [X]

20.1 Total amount loaned during the year (inclusive of Separate Accounts, exclusive of policy loans):

20.11 To directors or other officers	\$		0
20.12 To stockholders not officers	\$		0
20.13 Trustees, supreme or grand (Fraternal only)	\$		0

20.2 Total amount of loans outstanding at the end of year (inclusive of Separate Accounts, exclusive of policy loans):

20.21 To directors or other officers	\$		0
20.22 To stockholders not officers	\$		0
20.23 Trustees, supreme or grand (Fraternal only)	\$		0

21.1 Were any assets reported in this statement subject to a contractual obligation to transfer to another party without the liability for such obligation being reported in the statement? Yes [] No [X]

21.2 If yes, state the amount thereof at December 31 of the current year:

21.21 Rented from others	\$		0
21.22 Borrowed from others	\$		0
21.23 Leased from others	\$		0
21.24 Other	\$		0

GENERAL INTERROGATORIES

- 22.1 Does this statement include payments for assessments as described in the Annual Statement Instructions other than guaranty fund or guaranty association assessments? Yes [] No [X]
- 22.2 If answer is yes:
- | | | | |
|--|------------------------------------------------|----|---|
| | 22.21 Amount paid as losses or risk adjustment | \$ | 0 |
| | 22.22 Amount paid as expenses | \$ | 0 |
| | 22.23 Other amounts paid | \$ | 0 |
- 23.1 Does the reporting entity report any amounts due from parent, subsidiaries or affiliates on Page 2 of this statement? Yes [X] No []
- 23.2 If yes, indicate any amounts receivable from parent included in the Page 2 amount: \$ 0

INVESTMENT

- 24.01 Were all the stocks, bonds and other securities owned December 31 of current year, over which the reporting entity has exclusive control, in the actual possession of the reporting entity on said date? (other than securities lending programs addressed in 24.03) Yes [X] No []
- 24.02 If no, give full and complete information, relating thereto:

- 24.03 For security lending programs, provide a description of the program including value for collateral and amount of loaned securities, and whether collateral is carried on or off-balance sheet. (an alternative is to reference Note 17 where this information is also provided)
 The Company participates in a Securities Lending Program to generate additional income, whereby certain fixed income and mortgage backed securities are loaned for a period of time from the Company's portfolio to qualifying third parties, via a lending agent. The company does not participate in term loans; therefore, the company does not have contractual collateral transactions that extend beyond one year from the reporting date. Borrowers of these securities provide collateral equal to or in excess of 102% of the market value of the loaned securities. Acceptable collateral may be in the form of cash or U.S. Government securities, such as Treasuries and Agency Bonds. The market value of the loaned securities is monitored and additional collateral is obtained if the market value of the collateral falls below 102% of the market value of the loaned securities. Additionally, the lending agent indemnifies the Company against borrower defaults. Cash collateral is carried as an asset with an offsetting liability on the balance sheet, as the collateral is unrestricted and the Company can exercise discretion as to how the collateral is invested. The loaned securities remain a recorded asset of the Company.
- 24.04 For the reporting entity's securities lending program, report amount of collateral for conforming programs as outlined in the Risk Based Capital Instructions. \$ 0
- 24.05 For the reporting entity's securities lending program report amount of collateral for other programs. \$ 0
- 24.06 Does your securities lending program require 102% (domestic securities) and 105% (foreign securities) from the counterparty at the outset of the contract? Yes [] No [] N/A [X]
- 24.07 Does the reporting entity non-admit when the collateral received from the counterparty falls below 100%? Yes [X] No [] N/A []
- 24.08 Does the reporting entity or the reporting entity's securities lending agent utilize the Master Securities Lending Agreement (MSLA) to conduct securities lending? Yes [] No [] N/A [X]
- 24.09 For the reporting entity's security lending program, state the amount of the following as of December 31 of the current year:
- | | | | |
|------------------------------------------------------------------------------------------------------------------|--|----|---|
| 24.091 Total fair value of reinvested collateral assets reported on Schedule DL, Parts 1 and 2 | | \$ | 0 |
| 24.092 Total book adjusted/carrying value of reinvested collateral assets reported on Schedule DL, Parts 1 and 2 | | \$ | 0 |
| 24.093 Total payable for securities lending reported on the liability page | | \$ | 0 |
- 25.1 Were any of the stocks, bonds or other assets of the reporting entity owned at December 31 of the current year not exclusively under the control of the reporting entity or has the reporting entity sold or transferred any assets subject to a put option contract that is currently in force? (Exclude securities subject to Interrogatory 21.1 and 24.03). Yes [X] No []

GENERAL INTERROGATORIES

25.2 If yes, state the amount thereof at December 31 of the current year:

	25.21 Subject to repurchase agreements	\$ <u>0</u>
	25.22 Subject to reverse repurchase agreements	\$ <u>0</u>
	25.23 Subject to dollar repurchase agreements	\$ <u>0</u>
	25.24 Subject to reverse dollar repurchase agreements	\$ <u>0</u>
	25.25 Placed under option agreements	\$ <u>0</u>
	25.26 Letter stock or securities restricted as to sale - excluding FHLB Capital Stock	\$ <u>0</u>
	25.27 FHLB Capital Stock	\$ <u>246,000</u>
	25.28 On deposit with states	\$ <u>8,717,805</u>
	25.29 On deposit with other regulatory bodies	\$ <u>0</u>
	25.30 Pledged as collateral - excluding collateral pledged to an FHLB	\$ <u>0</u>
	25.31 Pledged as collateral to FHLB - including assets backing funding agreements	\$ <u>0</u>
	25.32 Other	\$ <u>0</u>

25.3 For category (25.26) provide the following:

1 Nature of Restriction	2 Description	3 Amount
.....	0
.....	0
.....	0

26.1 Does the reporting entity have any hedging transactions reported on Schedule DB? Yes No

26.2 If yes, has a comprehensive description of the hedging program been made available to the domiciliary state? Yes No N/A
If no, attach a description with this statement.

LINES 26.3 through 26.5 : FOR LIFE/FRATERNAL REPORTING ENTITIES ONLY:

26.3 Does the reporting entity utilize derivatives to hedge variable annuity guarantees subject to fluctuations as a result of interest rate sensitivity? Yes No

26.4 If the response to 26.3 is YES, does the reporting entity utilize:

	26.41 Special accounting provision of SSAP No. 108	Yes <input type="checkbox"/> No <input checked="" type="checkbox"/>
	26.42 Permitted accounting practice	Yes <input type="checkbox"/> No <input checked="" type="checkbox"/>
	26.43 Other accounting guidance	Yes <input type="checkbox"/> No <input checked="" type="checkbox"/>

26.5 By responding YES to 26.41 regarding utilizing the special accounting provisions of SSAP No. 108, the reporting entity attests to the following: Yes No

- The reporting entity has obtained explicit approval from the domiciliary state.
- Hedging strategy subject to the special accounting provisions is consistent with the requirements of VM-21.
- Actuarial certification has been obtained which indicates that the hedging strategy is incorporated within the establishment of VM-21 reserves and provides the impact of the hedging strategy within the Actuarial Guideline Conditional Tail Expectation Amount.
- Financial Officer Certification has been obtained which indicates that the hedging strategy meets the definition of a Clearly Defined Hedging Strategy within VM-21 and that the Clearly Defined Hedging Strategy is the hedging strategy being used by the company in its actual day-to-day risk mitigation efforts.

27.1 Were any preferred stocks or bonds owned as of December 31 of the current year mandatorily convertible into equity, or, at the option of the issuer, convertible into equity? Yes No

27.2 If yes, state the amount thereof at December 31 of the current year. \$ 0

28. Excluding items in Schedule E - Part 3 - Special Deposits, real estate, mortgage loans and investments held physically in the reporting entity's offices, vaults or safety deposit boxes, were all stocks, bonds and other securities, owned throughout the current year held pursuant to a custodial agreement with a qualified bank or trust company in accordance with Section 1, III - General Examination Considerations, F. Outsourcing of Critical Functions, Custodial or Safekeeping Agreements of the NAIC Financial Condition Examiners Handbook? Yes No

GENERAL INTERROGATORIES

28.01 For agreements that comply with the requirements of the NAIC Financial Condition Examiners Handbook, complete the following:

1 Name of Custodian(s)	2 Custodian's Address
Bank of New York Mellon	601 Travis Street, Houston, TX 77002

28.02 For all agreements that do not comply with the requirements of the NAIC Financial Condition Examiners Handbook, provide the name, location and a complete explanation:

1 Name(s)	2 Location(s)	3 Complete Explanation(s)

28.03 Have there been any changes, including name changes, in the custodian(s) identified in 28.01 during the current year? Yes [] No [X]

28.04 If yes, give full and complete information relating thereto:

1 Old Custodian	2 New Custodian	3 Date of Change	4 Reason

28.05 Investment management - Identify all investment advisors, investment managers, broker/dealers, including individuals that have the authority to make investment decisions on behalf of the reporting entity. For assets that are managed internally by employees of the reporting entity, note as such. ["... that have access to the investment accounts"; "...handle securities"]

1 Name Firm or Individual	2 Affiliation
Liberty Mutual Group Asset Management Inc.	A

28.0597 For those firms/individuals listed in the table for Question 28.05, do any firms/individuals unaffiliated with the reporting entity (i.e., designated with a "U") manage more than 10% of the reporting entity's invested assets? Yes [] No [X]

28.0598 For firms/individuals unaffiliated with the reporting entity (i.e., designated with a "U") listed in the table for Question 28.05, does the total assets under management aggregate to more than 50% of the reporting entity's invested assets? Yes [] No [X]

28.06 For those firms or individuals listed in the table 28.05 with an affiliation code of "A" (affiliated) or "U" (unaffiliated), provide the information for the table below.

1 Name Firm or Individual	2 Central Registration Depository Number	3 Legal Entity Identifier (LEI)	4 Registered With	5 Investment Management Agreement (IMA) Filed
Liberty Mutual Group Asset Management Inc.	N/A	N/A	N/A	DS

29.1 Does the reporting entity have any diversified mutual funds reported in Schedule D – Part 2 (diversified according to the Securities and Exchange Commission (SEC) in the Investment Company Act of 1940 [Section 5 (b) (1)])? Yes [] No [X]

29.2 If yes, complete the following schedule:

1 CUSIP #	2 Name of Mutual Fund	3 Book/Adjusted Carrying Value
		0
		0
		0

GENERAL INTERROGATORIES

1 CUSIP #	2 Name of Mutual Fund	3 Book/Adjusted Carrying Value
29.2999 TOTAL		0

29.3 For each mutual fund listed in the table above, complete the following schedule:

1 Name of Mutual Fund (from above table)	2 Name of Significant Holding of the Mutual Fund	3 Amount of Mutual Fund's Book/Adjusted Carrying Value Attributable to the Holding	4 Date of Valuation
		0	
		0	
		0	

30. Provide the following information for all short-term and long-term bonds and all preferred stocks. Do not substitute amortized value or statement value for fair value.

	1 Statement (Admitted) Value	2 Fair Value	3 Excess of Statement over Fair Value (-), or Fair Value over Statement (+)
30.1 Bonds	117,164,180	124,424,723	7,260,543
30.2 Preferred stocks	0	0	0
30.3 Totals	117,164,180	124,424,723	7,260,543

30.4 Describe the sources or methods utilized in determining the fair values:

The primary source for reported fair values is our pricing vendor, Interactive Data Corporation, followed by backfill from Reuters, Bloomberg, Barclays, Merrill Lynch, and Markit for Term Loan securities. Lastly, management determines fair value based on quoted market prices of similar financial instruments or by using industry recognized valuation techniques.

31.1 Was the rate used to calculate fair value determined by a broker or custodian for any of the securities in Schedule D? Yes [] No [X]

31.2 If the answer to 31.1 is yes, does the reporting entity have a copy of the broker's or custodian's pricing policy (hard copy or electronic copy) for all brokers or custodians used as a pricing source? Yes [] No [X]

31.3 If the answer to 31.2 is no, describe the reporting entity's process for determining a reliable pricing source for purposes of disclosure of fair value for Schedule D:

.....

.....

.....

.....

32.1 Have all the filing requirements of the Purposes and Procedures Manual of the NAIC Investment Analysis Office been followed? Yes [X] No []

32.2 If no, list exceptions:

.....

.....

.....

33 By self-designating 5GI securities, the reporting entity is certifying the following elements of each self-designated 5GI security:

- a. Documentation necessary to permit a full credit analysis of the security does not exist or an NAIC CRP credit rating for an FE or PL security is not available.
- b. Issuer or obligor is current on all contracted interest and principal payments.
- c. The insurer has an actual expectation of ultimate payment of all contracted interest and principal.

Has the reporting entity self-designated 5GI securities? Yes [] No [X]

GENERAL INTERROGATORIES

34 By self-designating PLGI securities, the reporting entity is certifying the following elements of each self-designated PLGI security:

- a. The security was purchased prior to January 1, 2018.
- b. The reporting entity is holding capital commensurate with the NAIC Designation reported for the security.
- c. The NAIC Designation was derived from the credit rating assigned by an NAIC CRP in its legal capacity as an NRSRO which is shown on a current private letter rating held by the insurer and available for examination by state insurance regulators.
- d. The reporting entity is not permitted to share this credit rating of the PL security with the SVO.

Has the reporting entity self-designated PLGI securities? Yes [] No [X]

35. By assigning FE to a Schedule BA non-registered private fund, the reporting entity is certifying the following elements of each self-designated FE fund:

- a. The shares were purchased prior to January 1, 2019.
- b. The reporting entity is holding capital commensurate with the NAIC Designation reported for the security.
- c. The security had a public credit rating(s) with annual surveillance assigned by an NAIC CRP in its legal capacity as an NRSRO prior to January 1, 2019.
- d. The fund only or predominantly holds bonds in its portfolio.
- e. The current reported NAIC Designation was derived from the public credit rating(s) with annual surveillance assigned by an NAIC CRP in its legal capacity as an NRSRO.
- f. The public credit rating(s) with annual surveillance assigned by an NAIC CRP has not lapsed.

Has the reporting entity assigned FE to Schedule BA non-registered private funds that complied with the above criteria? Yes [] No [X]

36. By rolling/renewing short-term or cash-equivalent investments with continued reporting on Schedule DA, part 1 or Schedule E Part 2 (identified through a code (%) in those investment schedules), the reporting entity is certifying to the following:

- a. The investment is a liquid asset that can be terminated by the reporting entity on the current maturity date.
- b. If the investment is with a nonrelated party or nonaffiliate, then it reflects an arms-length transaction with renewal completed at the discretion of all involved parties.
- c. If the investment is with a related party or affiliate, then the reporting entity has completed robust re-underwriting of the transaction for which documentation is available for regulator review.
- d. Short-term and cash equivalent investments that have been renewed/rolled from the prior period that do not meet the criteria in 36.a - 36.c are reported as long-term investments.

Has the reporting entity rolled/renewed short-term or cash equivalent investments in accordance with these criteria? Yes [X] No [] N/A []

OTHER

37.1 Amount of payments to trade associations, service organizations and statistical or Rating Bureaus, if any? \$ _____ 0

37.2 List the name of the organization and the amount paid if any such payment represented 25% or more of the total payments to trade associations, service organizations and statistical or rating bureaus during the period covered by this statement.

1 Name	2 Amount Paid
.....	\$ 0
.....	\$ 0
.....	\$ 0

38.1 Amount of payments for legal expenses, if any? \$ _____ 0

38.2 List the name of the firm and the amount paid if any such payment represented 25% or more of the total payments for legal expenses during the period covered by this statement.

1 Name	2 Amount Paid
.....	\$ 0
.....	\$ 0
.....	\$ 0

39.1 Amount of payments for expenditures in connection with matters before legislative bodies, officers or departments of government, if any? \$ _____ 0

39.2 List the name of the firm and the amount paid if any such payment represented 25% or more of the total payment expenditures in connection with matters before legislative bodies, officers or departments of government during the period covered by this statement.

1 Name	2 Amount Paid
.....	\$ 0
.....	\$ 0
.....	\$ 0

GENERAL INTERROGATORIES

PART 2 – PROPERTY & CASUALTY INTERROGATORIES

1.1 Does the reporting entity have any direct Medicare Supplement Insurance in force? Yes [] No [X]

1.2 If yes, indicate premium earned on U.S. business only. \$ 0

1.3 What portion of Item (1.2) is not reported on the Medicare Supplement Insurance Experience Exhibit? \$ 0

1.31 Reason for excluding

.....

.....

.....

1.4 Indicate amount of earned premium attributable to Canadian and/or Other Alien not included in Item (1.2) above. \$ 0

1.5 Indicate total incurred claims on all Medicare Supplement insurance. \$ 0

1.6 Individual policies:

Most current three years:

1.61 Total premium earned \$ 0

1.62 Total incurred claims \$ 0

1.63 Number of covered lives 0

All years prior to most current three years:

1.64 Total premium earned \$ 0

1.65 Total incurred claims \$ 0

1.66 Number of covered lives 0

1.7 Group policies:

Most current three years:

1.71 Total premium earned \$ 0

1.72 Total incurred claims \$ 0

1.73 Number of covered lives 0

All years prior to most current three years:

1.74 Total premium earned \$ 0

1.75 Total incurred claims \$ 0

1.76 Number of covered lives 0

2. Health Test:

	1		2	
	Current Year		Prior Year	
2.1 Premium Numerator	\$ <u> 0</u>		\$ <u> 0</u>	
2.2 Premium Denominator	\$ <u> 0</u>		\$ <u> 0</u>	
2.3 Premium Ratio (2.1 / 2.2)	<u> 0.00</u>		<u> 0.00</u>	
2.4 Reserve Numerator	\$ <u> 0</u>		\$ <u> 0</u>	
2.5 Reserve Denominator	\$ <u> 0</u>		\$ <u> (10,366)</u>	
2.6 Reserve Ratio (2.4 / 2.5)	<u> 0.00</u>		<u> 0.00</u>	

3.1 Did the reporting entity issue participating policies during the calendar year? Yes [X] No []

3.2 If yes, provide the amount of premium written for participating and/or non-participating policies during the calendar year

3.21 Participating policies \$ 0

3.22 Non-participating policies \$ 296,343,847

4. For Mutual reporting entities and Reciprocal Exchanges only:

4.1 Does the reporting entity issue assessable policies? Yes [] No [X]

4.2 Does the reporting entity issue non-assessable policies? Yes [] No [X]

4.3 If assessable policies are issued, what is the extent of the contingent liability of the policyholders? 0 %

4.4 Total amount of assessments paid or ordered to be paid during the year on deposit notes or contingent premiums. \$ 0

5. For Reciprocal Exchanges Only:

5.1 Does the exchange appoint local agents? Yes [] No [X]

5.2 If yes, is the commission paid:

5.21 Out of Attorney's-in-fact compensation Yes [] No [] N/A [X]

5.22 As a direct expense of the exchange Yes [] No [] N/A [X]

5.3 What expenses of the Exchange are not paid out of the compensation of the Attorney-in-fact?

.....

.....

.....

5.4 Has any Attorney-in-fact compensation, contingent on fulfillment of certain conditions, been deferred? Yes [] No [X]

5.5 If yes, give full information

.....

.....

.....

6.1 What provision has this reporting entity made to protect itself from an excessive loss in the event of a catastrophe under a workers' compensation contract issued without limit loss:
See Note 21C1

.....

.....

.....

GENERAL INTERROGATORIES

PART 2 – PROPERTY & CASUALTY INTERROGATORIES

- 6.2 Describe the method used to estimate this reporting entity's probable maximum insurance loss, and identify the type of insured exposures comprising that probable maximum loss, the locations of concentrations of those exposures and the external resources (such as consulting firms or computer software models), if any, used in the estimation process:
See Note 21C1
- 6.3 What provision has this reporting entity made (such as a catastrophic reinsurance program) to protect itself from an excessive loss arising from the types and concentrations of insured exposures comprising its probable maximum property insurance loss?
See Note 21C1
- 6.4 Does the reporting entity carry catastrophe reinsurance protection for at least one reinstatement, in an amount sufficient to cover its estimated probable maximum loss attributable to a single loss event or occurrence? Yes [] No [X]
- 6.5 If no, describe any arrangements or mechanisms employed by the reporting entity to supplement its catastrophe reinsurance program or to hedge its exposure to unreinsured catastrophic loss
The Company cedes 100% of its net business to Liberty Mutual Insurance Company, the lead company in the Liberty Mutual Pool. Liberty Mutual Insurance Company purchases external catastrophe reinsurance coverage on behalf of the Liberty Mutual Pool.
- 7.1 Has the reporting entity reinsured any risk with any other entity under a quota share reinsurance contract that includes a provision that would limit the reinsurer's losses below the stated quota share percentage (e.g., a deductible, a loss ratio corridor, a loss cap, an aggregate limit or any similar provisions)? Yes [] No [X]
- 7.2 If yes, indicate the number of reinsurance contracts containing such provisions. _____ 0
- 7.3 If yes, does the amount of reinsurance credit taken reflect the reduction in quota share coverage caused by any applicable limiting provision(s)? Yes [X] No []
- 8.1 Has this reporting entity reinsured any risk with any other entity and agreed to release such entity from liability, in whole or in part, from any loss that may occur on this risk, or portion thereof, reinsured? Yes [] No [X]
- 8.2 If yes, give full information
- 9.1 Has the reporting entity ceded any risk under any reinsurance contract (or under multiple contracts with the same reinsurer or its affiliates) for which during the period covered by the statement: (i) it recorded a positive or negative underwriting result greater than 5% of prior year-end surplus as regards policyholders or it reported calendar year written premium ceded or year-end loss and loss expense reserves ceded greater than 5% of prior year-end surplus as regards policyholders; (ii) it accounted for that contract as reinsurance and not as a deposit; and (iii) the contract(s) contain one or more of the following features or other features that would have similar results:
(a) A contract term longer than two years and the contract is noncancellable by the reporting entity during the contract term;
(b) A limited or conditional cancellation provision under which cancellation triggers an obligation by the reporting entity, or an affiliate of the reporting entity, to enter into a new reinsurance contract with the reinsurer, or an affiliate of the reinsurer;
(c) Aggregate stop loss reinsurance coverage;
(d) A unilateral right by either party (or both parties) to commute the reinsurance contract, whether conditional or not, except for such provisions which are only triggered by a decline in the credit status of the other party;
(e) A provision permitting reporting of losses, or payment of losses, less frequently than on a quarterly basis (unless there is no activity during the period); or
(f) Payment schedule, accumulating retentions from multiple years or any features inherently designed to delay timing of the reimbursement to the ceding entity. Yes [] No [X]
- 9.2 Has the reporting entity during the period covered by the statement ceded any risk under any reinsurance contract (or under multiple contracts with the same reinsurer or its affiliates), for which, during the period covered by the statement, it recorded a positive or negative underwriting result greater than 5% of prior year-end surplus as regards policyholders or it reported calendar year written premium ceded or year-end loss and loss expense reserves ceded greater than 5% of prior year-end surplus as regards policyholders; excluding cessions to approved pooling arrangements or to captive insurance companies that are directly or indirectly controlling, controlled by, or under common control with (i) one or more unaffiliated policyholders of the reporting entity, or (ii) an association of which one or more unaffiliated policyholders of the reporting entity is a member where:
(a) The written premium ceded to the reinsurer by the reporting entity or its affiliates represents fifty percent (50%) or more of the entire direct and assumed premium written by the reinsurer based on its most recently available financial statement; or
(b) Twenty-five percent (25%) or more of the written premium ceded to the reinsurer has been retroceded back to the reporting entity or its affiliates in a separate reinsurance contract. Yes [] No [X]
- 9.3 If yes to 9.1 or 9.2, please provide the following information in the Reinsurance Summary Supplemental Filing for General Interrogatory 9:
(a) The aggregate financial statement impact gross of all such ceded reinsurance contracts on the balance sheet and statement of income;
(b) A summary of the reinsurance contract terms and indicate whether it applies to the contracts meeting the criteria in 9.1 or 9.2; and
(c) A brief discussion of management's principle objectives in entering into the reinsurance contract including the economic purpose to be achieved.
- 9.4 Except for transactions meeting the requirements of paragraph 37 of SSAP No. 62R, Property and Casualty Reinsurance, has the reporting entity ceded any risk under any reinsurance contract (or multiple contracts with the same reinsurer or its affiliates) during the period covered by the financial statement, and either:
(a) Accounted for that contract as reinsurance (either prospective or retroactive) under statutory accounting principles ("SAP") and as a deposit under generally accepted accounting principles ("GAAP"); or
(b) Accounted for that contract as reinsurance under GAAP and as a deposit under SAP? Yes [] No [X]
- 9.5 If yes to 9.4, explain in the Reinsurance Summary Supplemental Filing for General Interrogatory 9 (Section D) why the contract(s) is treated differently for GAAP and SAP.
- 9.6 The reporting entity is exempt from the Reinsurance Attestation Supplement under one or more of the following criteria:
(a) The entity does not utilize reinsurance; or, Yes [] No [X]
(b) The entity only engages in a 100% quota share contract with an affiliate and the affiliated or lead company has filed an attestation supplement; or Yes [] No [X]
(c) The entity has no external cessions and only participates in an intercompany pool and the affiliated or lead company has filed an attestation supplement. Yes [] No [X]

GENERAL INTERROGATORIES

PART 2 – PROPERTY & CASUALTY INTERROGATORIES

10. If the reporting entity has assumed risks from another entity, there should be charged on account of such reinsurances a reserve equal to that which the original entity would have been required to charge had it retained the risks. Has this been done? Yes No N/A

11.1 Has the reporting entity guaranteed policies issued by any other entity and now in force: Yes No

11.2 If yes, give full information

.....

.....

.....

12.1 If the reporting entity recorded accrued retrospective premiums on insurance contracts on Line 15.3 of the asset schedule, Page 2, state the amount of corresponding liabilities recorded for:

12.11 Unpaid losses	\$ 0
12.12 Unpaid underwriting expenses (including loss adjustment expenses)	\$ 0

12.2 Of the amount on Line 15.3, Page 2, state the amount that is secured by letters of credit, collateral and other funds? \$ 0

12.3 If the reporting entity underwrites commercial insurance risks, such as workers' compensation, are premium notes or promissory notes accepted from its insureds covering unpaid premiums and/or unpaid losses? Yes No N/A

12.4 If yes, provide the range of interest rates charged under such notes during the period covered by this statement:

12.41 From	0.00 %
12.42 To	0.00 %

12.5 Are letters of credit or collateral and other funds received from insureds being utilized by the reporting entity to secure premium notes or promissory notes taken by a reporting entity or to secure any of the reporting entity's reported direct unpaid loss reserves, including unpaid losses under loss deductible features of commercial policies? Yes No

12.6 If yes, state the amount thereof at December 31 of current year:

12.61 Letters of Credit	\$ 0
12.62 Collateral and other funds	\$ 0

13.1 Largest net aggregate amount insured in any one risk (excluding workers' compensation): \$ 0

13.2 Does any reinsurance contract considered in the calculation of this amount include an aggregate limit of recovery without also including a reinstatement provision? Yes No

13.3 State the number of reinsurance contracts (excluding individual facultative risk certificates, but including facultative programs, automatic facilities or facultative obligatory contracts) considered in the calculation of the amount. 0

14.1 Is the company a cedant in a multiple cedant reinsurance contract? Yes No

14.2 If yes, please describe the method of allocating and recording reinsurance among the cedants:

Premiums and recoverables were allocated pursuant to allocation agreements, including the intercompany pooling agreement.

.....

.....

14.3 If the answer to 14.1 is yes, are the methods described in item 14.2 entirely contained in the respective multiple cedant reinsurance contracts? Yes No

14.4 If the answer to 14.3 is no, are all the methods described in 14.2 entirely contained in written agreements? Yes No

14.5 If the answer to 14.4 is no, please explain:

N/A

.....

.....

15.1 Has the reporting entity guaranteed any financed premium accounts? Yes No

15.2 If yes, give full information

.....

.....

.....

16.1 Does the reporting entity write any warranty business? Yes No

If yes, disclose the following information for each of the following types of warranty coverage:

		1	2	3	4	5
		Direct Losses Incurred	Direct Losses Unpaid	Direct Written Premium	Direct Premium Unearned	Direct Premium Earned
16.11 Home	\$	0	0	0	0	0
16.12 Products	\$	0	0	0	0	0
16.13 Automobile	\$	0	0	0	0	0
16.14 Other*	\$	0	0	0	0	0

* Disclose type of coverage: _____

GENERAL INTERROGATORIES

PART 2 – PROPERTY & CASUALTY INTERROGATORIES

17.1 Does the reporting entity include amounts recoverable on unauthorized reinsurance in Schedule F – Part 3 that is exempt from the statutory provision for unauthorized reinsurance? Yes [] No [X]

Incurred but not reported losses on contracts in force prior to July 1, 1984, and not subsequently renewed are exempt from the statutory provision for unauthorized reinsurance. Provide the following information for this exemption:

17.11 Gross amount of unauthorized reinsurance in Schedule F – Part 3 exempt from the statutory provision for unauthorized reinsurance	\$ <u>0</u>
17.12 Unfunded portion of Interrogatory 17.11	\$ <u>0</u>
17.13 Paid losses and loss adjustment expenses portion of Interrogatory 17.11	\$ <u>0</u>
17.14 Case reserves portion of Interrogatory 17.11	\$ <u>0</u>
17.15 Incurred but not reported portion of Interrogatory 17.11	\$ <u>0</u>
17.16 Unearned premium portion of Interrogatory 17.11	\$ <u>0</u>
17.17 Contingent commission portion of Interrogatory 17.11	\$ <u>0</u>

18.1 Do you act as a custodian for health savings accounts? Yes [] No [X]

18.2 If yes, please provide the amount of custodial funds held as of the reporting date. \$ 0

18.3 Do you act as an administrator for health savings accounts? Yes [] No [X]

18.4 If yes, please provide the balance of the funds administered as of the reporting date. \$ 0

19. Is the reporting entity licensed or chartered, registered, qualified, eligible or writing business in at least two states? Yes [X] No []

19.1 If no, does the reporting entity assume reinsurance business that covers risks residing in at least one state other than the state of domicile of the reporting entity? Yes [] No [X]

FIVE – YEAR HISTORICAL DATA

Show amounts in whole dollars only, no cents; show percentages to one decimal place, i.e., 17.6.

	1	2	3	4	5
	2020	2019	2018	2017	2016
Gross Premiums Written (Page 8, Part 1B, Cols. 1, 2 & 3)					
1. Liability lines (Lines 11.1, 11.2, 16, 17.1, 17.2, 17.3, 18.1, 18.2, 19.1, 19.2 & 19.3, 19.4)	215,059,544	184,162,555	153,113,185	166,491,394	191,860,413
2. Property lines (Lines 1, 2, 9, 12, 21 & 26)	35,695,836	56,914,412	54,719,957	54,707,469	59,221,487
3. Property and liability combined lines (Lines 3, 4, 5, 8, 22 & 27)	31,043,127	18,096,982	18,530,019	11,374,729	9,411,963
4. All other lines (Lines 6, 10, 13, 14, 15, 23, 24, 28, 29, 30 & 34)	60,310,966	113,010,159	110,598,661	113,413,365	138,556,873
5. Nonproportional reinsurance lines (Lines 31, 32 & 33)					
6. Total (Line 35)	342,109,473	372,184,108	336,961,822	345,986,957	399,050,736
Net Premiums Written (Page 8, Part 1B, Col. 6)					
7. Liability lines (Lines 11.1, 11.2, 16, 17.1, 17.2, 17.3, 18.1, 18.2, 19.1, 19.2 & 19.3, 19.4)				13,048,436	21,992,406
8. Property lines (Lines 1, 2, 9, 12, 21 & 26)				1,390,963	3,120,420
9. Property and liability combined lines (Lines 3, 4, 5, 8, 22 & 27)				430,084	209,261
10. All other lines (Lines 6, 10, 13, 14, 15, 23, 24, 28, 29, 30 & 34)				9,204,552	19,393,792
11. Nonproportional reinsurance lines (Lines 31, 32 & 33)					
12. Total (Line 35)				24,074,035	44,715,879
Statement of Income (Page 4)					
13. Net underwriting gain (loss) (Line 8)	498,857	1,156,128	1,607,801	(7,159,175)	(12,097,752)
14. Net investment gain (loss) (Line 11)	3,649,861	3,922,019	1,792,197	8,527,494	6,290,815
15. Total other income (Line 15)	195,978	(136,302)	(1,005,457)	(28,145,322)	10,317,934
16. Dividends to policyholders (Line 17)					
17. Federal and foreign income taxes incurred (Line 19)	(231,666)	477,302	(647,167)	(15,501,000)	644,334
18. Net income (Line 20)	4,576,362	4,464,543	3,041,708	(11,276,003)	3,866,663
Balance Sheet Lines (Pages 2 and 3)					
19. Total admitted assets excluding protected cell business (Page 2, Line 26, Col. 3)	401,154,691	191,150,979	235,373,110	185,821,900	424,948,058
20. Premiums and considerations (Page 2, Col. 3)					
20.1 In course of collection (Line 15.1)		3,311,654	5,585,041	25,722,348	74,398,223
20.2 Deferred and not yet due (Line 15.2)					
20.3 Accrued retrospective premiums (Line 15.3)					
21. Total liabilities excluding protected cell business (Page 3, Line 26)	300,368,116	101,991,227	146,950,157	86,594,515	259,304,312
22. Losses (Page 3, Line 1)					71,798,920
23. Loss adjustment expenses (Page 3, Line 3)					12,947,594
24. Unearned premiums (Page 3, Line 9)	239				20,290,270
25. Capital paid up (Page 3, Lines 30 & 31)	5,000,000	5,000,000	5,000,000	5,000,000	5,000,000
26. Surplus as regards policyholders (Page 3, Line 37)	100,786,575	89,186,752	88,422,956	99,227,386	165,643,746
Cash Flow (Page 5)					
27. Net cash from operations (Line 11)	(86,532,887)	(17,985,756)	(45,288,007)	86,144,318	(18,291,934)
Risk-Based Capital Analysis					
28. Total adjusted capital	100,786,575	89,186,752	88,422,956	99,227,386	165,643,746
29. Authorized control level risk-based capital	4,082,662	7,490,188	8,828,790	16,146,304	38,111,596
Percentage Distribution of Cash, Cash Equivalents and Invested Assets (Page 2, Col. 3) (Item divided by Page 2, Line 12, Col. 3) x 100.0					
30. Bonds (Line 1)	86.3	96.8	90.1	85.0	82.9
31. Stocks (Lines 2.1 & 2.2)	0.2	0.3	0.2	0.6	13.9
32. Mortgage loans on real estate (Lines 3.1 and 3.2)					
33. Real estate (Lines 4.1, 4.2 & 4.3)					
34. Cash, cash equivalents and short-term investments (Line 5)	13.5	3.0	9.7	13.4	3.2
35. Contract loans (Line 6)					
36. Derivatives (Line 7)					
37. Other invested assets (Line 8)					
38. Receivables for securities (Line 9)				1.1	
39. Securities lending reinvested collateral assets (Line 10)					
40. Aggregate write-ins for invested assets (Line 11)					
41. Cash, cash equivalents and invested assets (Line 12)	100.0	100.0	100.0	100.0	100.0
Investments in Parent, Subsidiaries and Affiliates					
42. Affiliated bonds, (Sch. D, Summary, Line 12, Col. 1)					
43. Affiliated preferred stocks (Sch. D, Summary, Line 18, Col. 1)					
44. Affiliated common stocks (Sch. D, Summary, Line 24, Col. 1)	246,000				
45. Affiliated short-term investments (subtotals included in Schedule DA Verification, Col. 5, Line 10)					
46. Affiliated mortgage loans on real estate					
47. All other affiliated					
48. Total of above Lines 42 to 47	246,000				
49. Total investment in parent included in Lines 42 to 47 above					
50. Percentage of investments in parent, subsidiaries and affiliates to surplus as regards policyholders (Line 48 above divided by Page 3, Col. 1, Line 37 x 100.0)	0.2				

FIVE – YEAR HISTORICAL DATA

(Continued)

	1	2	3	4	5
	2020	2019	2018	2017	2016
Capital and Surplus Accounts (Page 4)					
51. Net unrealized capital gains (losses) (Line 24)	(211,425)			(4,683,830)	2,533,626
52. Dividends to stockholders (Line 35)					
53. Change in surplus as regards policyholders for the year (Line 38)	11,599,823	763,795	(10,804,429)	(66,416,360)	11,674,557
Gross Losses Paid (Page 9, Part 2, Cols. 1 & 2)					
54. Liability lines (Lines 11.1, 11.2, 16, 17.1, 17.2, 17.3, 18.1, 18.2, 19.1, 19.2 & 19.3, 19.4)	129,225,322	88,038,505	80,822,919	72,190,791	108,937,477
55. Property lines (Lines 1, 2, 9, 12, 21 & 26)	32,669,061	35,312,521	31,368,283	26,580,077	17,924,632
56. Property and liability combined lines (Lines 3, 4, 5, 8, 22 & 27)	14,965,012	23,134,504	11,628,943	7,503,752	2,958,335
57. All other lines (Lines 6, 10, 13, 14, 15, 23, 24, 28, 29, 30 & 34)	71,943,616	90,504,931	71,756,333	55,437,622	48,044,080
58. Nonproportional reinsurance lines (Lines 31, 32 & 33)					
59. Total (Line 35)	248,803,011	236,990,461	195,576,478	161,712,242	177,864,524
Net Losses Paid (Page 9, Part 2, Col. 4)					
60. Liability lines (Lines 11.1, 11.2, 16, 17.1, 17.2, 17.3, 18.1, 18.2, 19.1, 19.2 & 19.3, 19.4)				4,253,939	16,072,543
61. Property lines (Lines 1, 2, 9, 12, 21 & 26)			1	1,857,030	2,385,203
62. Property and liability combined lines (Lines 3, 4, 5, 8, 22 & 27)				126,060	172,888
63. All other lines (Lines 6, 10, 13, 14, 15, 23, 24, 28, 29, 30 & 34)				7,486,387	8,468,435
64. Nonproportional reinsurance lines (Lines 31, 32 & 33)					
65. Total (Line 35)			1	13,723,416	27,099,069
Operating Percentages (Page 4) (Item divided by Page 4, Line 1) x 100.0					
66. Premiums earned (Line 1)	100.0	100.0	100.0	100.0	100.0
67. Losses incurred (Line 2)				66.5	57.6
68. Loss expenses incurred (Line 3)				18.3	20.7
69. Other underwriting expenses incurred (Line 4)				45.9	48.5
70. Net underwriting gain (loss) (Line 8)				(30.7)	(26.7)
Other Percentages					
71. Other underwriting expenses to net premiums written (Page 4, Lines 4 + 5 - 15 divided by Page 8, Part 1B, Col. 6, Line 35 x 100.0)				161.4	26.0
72. Losses and loss expenses incurred to premiums earned (Page 4, Lines 2 + 3 divided by Page 4, Line 1 x 100.0)				84.8	78.2
73. Net premiums written to policyholders' surplus (Page 8, Part 1B, Col. 6, Line 35 divided by Page 3, Line 37, Col. 1 x 100.0)				24.3	27.0
One Year Loss Development (\$000 omitted)					
74. Development in estimated losses and loss expenses incurred prior to current year (Schedule P, Part 2-Summary, Line 12, Col. 11)					(3,671)
75. Percent of development of losses and loss expenses incurred to policyholders' surplus of prior year end (Line 74 above divided by Page 4, Line 21, Col. 1 x 100.0)					(2.4)
Two Year Loss Development (\$000 omitted)					
76. Development in estimated losses and loss expenses incurred 2 years before the current year and prior year (Schedule P, Part 2-Summary, Line 12, Col. 12)			7		3,324
77. Percent of development of losses and loss expenses incurred to reported policyholders' surplus of second prior year end (Line 76 above divided by Page 4, Line 21, Col. 2 x 100.0)			0.0		2.1

NOTE: If a party to a merger, have the two most recent years of this exhibit been restated due to a merger in compliance with the disclosure requirements of SSAP No. 3, Accounting Changes and Correction of Errors?

Yes [] No []

If no, please explain:

.....
.....
.....

NONE **Schedule P - Part 1 - Summary**

NONE **Schedule P - Part 2, 3, 4 - Summary**

SCHEDULE T - EXHIBIT OF PREMIUMS WRITTEN

Allocated By States and Territories

	1	Gross Premiums, Including Policy and Membership Fees Less Return Premiums and Premiums on Policies Not Taken		4	5	6	7	8	9
		Active Status (a)	2						
States, Etc.		Direct Premiums Written	Direct Premiums Earned	Dividends Paid or Credited to Policyholders on Direct Business	Direct Losses Paid (Deducting Salvage)	Direct Losses Incurred	Direct Losses Unpaid	Finance and Service Charges Not Included in Premiums	Direct Premium Written for Federal Purchasing Groups (Included in Col. 2)
1. Alabama	AL	L	4,487,922	6,955,855		6,910,993	3,450,163	1,004,506	
2. Alaska	AK	L	162,566	227,046		41,763	(312,829)	253,150	
3. Arizona	AZ	L	2,502,580	2,725,650		85,315	(2,909,832)	21,634,081	
4. Arkansas	AR	L	1,528,127	1,698,733		394,474	1,422,563	1,744,684	
5. California	CA	L	47,033,345	39,600,612		10,729,024	63,335,779	96,384,488	
6. Colorado	CO	L	3,313,456	3,337,534		792,160	1,144,723	4,509,596	
7. Connecticut	CT	L	5,528,437	4,883,741		600,897	1,064,051	3,863,424	
8. Delaware	DE	L	927,475	7,423,607		15,004,388	2,856,471	33,204,514	
9. District of Columbia	DC	L	2,073,814	2,462,200		31,489	344,536	4,149,014	
10. Florida	FL	L	10,268,632	8,945,574		859,419	6,995,361	18,107,493	
11. Georgia	GA	L	3,549,122	5,250,896		6,036,288	3,571,448	5,338,041	
12. Hawaii	HI	L	1,431,339	1,343,684			670,833	1,909,080	
13. Idaho	ID	L	336,100	324,935		16,592	103,311	352,701	
14. Illinois	IL	L	16,391,145	17,088,874		6,277,212	9,441,635	33,223,677	
15. Indiana	IN	L	3,274,902	2,792,160		1,758,401	624,867	1,813,718	
16. Iowa	IA	L	880,443	1,020,399		225,762	1,167,973	997,044	
17. Kansas	KS	L	5,009,883	5,773,950		4,060,412	3,745,423	3,471,030	
18. Kentucky	KY	L	632,574	671,965		537,333	916,941	1,150,323	
19. Louisiana	LA	L	4,569,929	5,366,897		1,917,817	1,621,766	6,255,682	
20. Maine	ME	L	1,301,995	1,244,995		934,169	1,669,159	1,588,186	
21. Maryland	MD	L	1,599,539	1,533,948		51,688	284,120	2,994,205	
22. Massachusetts	MA	L	11,965,603	8,834,211		1,850,023	5,987,752	9,622,425	
23. Michigan	MI	L	3,055,767	3,525,711		217,630	3,719,768	8,527,202	
24. Minnesota	MN	L	3,769,067	3,436,223		851,609	(5,698,401)	22,396,226	
25. Mississippi	MS	L	9,743,467	15,429,192		15,928,551	11,783,466	11,258,582	
26. Missouri	MO	L	12,592,015	11,645,595		10,659,676	9,106,280	4,305,079	
27. Montana	MT	L	1,214,671	1,923,436		2,936,738	1,598,233	111,397	
28. Nebraska	NE	L	5,829,772	5,742,030		8,001,015	1,584,300	(2,772,959)	
29. Nevada	NV	L	1,513,590	1,297,668		25,000,000	343,679	2,940,769	
30. New Hampshire	NH	L	504,828	285,677		9,169	10,166	291,864	
31. New Jersey	NJ	L	15,837,860	16,150,204		2,773,144	2,548,981	28,399,887	
32. New Mexico	NM	L	565,256	625,806		44,770	81,811	567,444	
33. New York	NY	L	60,122,211	56,095,901		38,760,709	55,255,118	161,667,272	
34. North Carolina	NC	L	3,197,943	2,896,371		748,844	1,396,077	4,781,830	
35. North Dakota	ND	L	138,906	156,141		8,489	23,451	45,084	
36. Ohio	OH	L	3,716,163	3,001,675		6,871,384	316,197	181,728	
37. Oklahoma	OK	L	3,922,444	4,077,303		1,730,153	2,308,275	3,008,318	
38. Oregon	OR	L	1,971,383	1,403,232		864,119	1,266,849	1,623,120	
39. Pennsylvania	PA	L	8,478,485	7,426,675		11,565,286	1,074,427	22,715,658	
40. Rhode Island	RI	L	455,563	1,258,648		816,347	1,244,229	1,598,379	
41. South Carolina	SC	L	1,084,606	996,388		1,146,774	1,141,460	999,713	
42. South Dakota	SD	L	706,326	588,952		85,721	656,462	659,583	
43. Tennessee	TN	L	4,852,294	4,576,379		1,377,466	516,299	9,597,486	
44. Texas	TX	L	14,068,903	11,990,482		13,463,014	9,540,049	26,775,676	
45. Utah	UT	L	745,844	670,515		81,398	(110,905)	2,033,384	
46. Vermont	VT	L	296,061	316,700		11,508	138,898	241,349	
47. Virginia	VA	L	2,246,596	2,264,513		12,468	493,694	4,011,646	
48. Washington	WA	L	3,321,024	3,339,759		298,555	848,970	3,777,071	
49. West Virginia	WV	L	130,553	143,205		(114)	(45,727)	268,629	
50. Wisconsin	WI	L	1,477,554	1,646,975		73,778	(112,000)	2,135,974	
51. Wyoming	WY	L	323,669	319,592		128,571	12,230	371,360	
52. American Samoa	AS	N							
53. Guam	GU	L	1,950	2,251			1,489	86,961	
54. Puerto Rico	PR	L	363,100	138,396		387,772	(3,759,292)	8,471,254	
55. U.S. Virgin Islands	VI	N					(207)	382	
56. Northern Mariana Islands	MP	N							
57. Canada	CAN	N					161,239	163,993	
58. Aggregate Other Alien	OT	X X X	1,327,043	596,002			(169,927)	342,371	
59. Totals	(a)	53	296,343,842	293,475,063		203,970,163	204,471,852	585,154,774	

DETAILS OF WRITE-INS									
58001.	ZZZ Other Alien	X X X	1,089,772	409,100			133,471	21,208	
58002.	AUS_Australia	X X X	39,310	24,817			15,335	15,452	
58003.	CHE_Switzerland	X X X	38,284	53,976			(15,511)	18,148	
58998.	Summary of remaining write-ins for Line 58 from overflow page	X X X	159,677	108,109			(303,222)	287,563	
58999.	Totals (Lines 58001 through 58003 plus 58998) (Line 58 above)	X X X	1,327,043	596,002			(169,927)	342,371	

Explanation of basis of allocation of premiums by states, etc.

(a) Active Status Counts

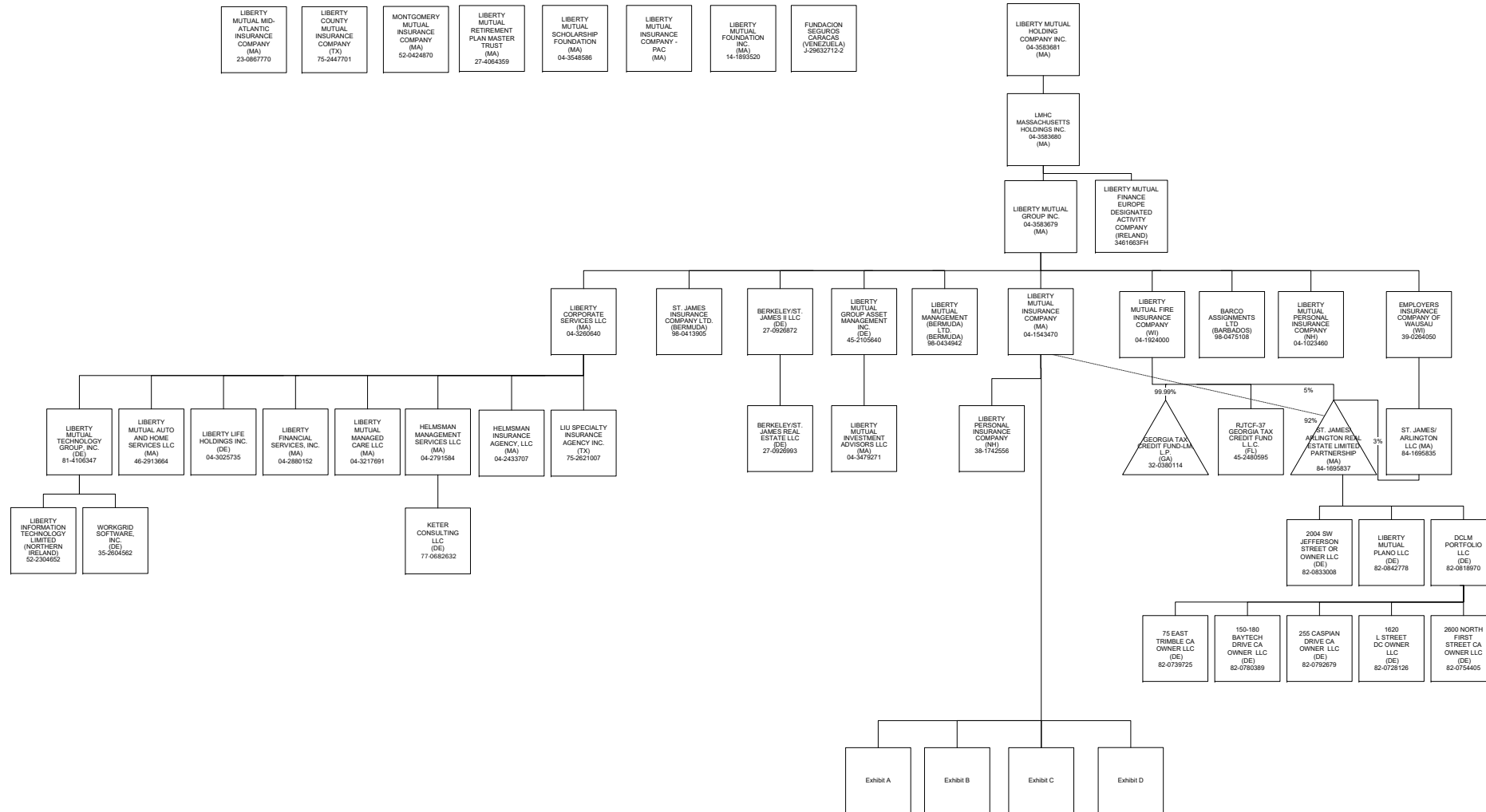
L - Licensed or Chartered - Licensed insurance carrier or domiciled RRG	53
E - Eligible - Reporting entities eligible or approved to write surplus lines in the state	_____
D - Domestic Surplus Lines Insurer (DSLII) - Reporting entities authorized to write surplus lines in the state of domicile	_____
R - Registered - Non-domiciled RRGs	_____
Q - Qualified - Qualified or accredited reinsurer	_____
N - None of the above - Not allowed to write business in the state (other than their state of domicile - See DSLII)	4

Explanation of basis of allocation of premiums by states, etc.

*Location of coverage - Fire, Allied Lines, Homeowners Multi Peril, Commercial Multi Peril, Earthquake, Boiler and Machinery	*Location of Court or Obligor - Surety
*States employee's main work place - Worker's Compensation	*Address of Assured - Other Accident and Health
*Location of Principal place of garaging of each individual car - Auto Liability, Auto Physical Damage	*Location of Properties covered - Burglary and Theft
*Principal Location of business or location of coverage - Liability other than Auto, Fidelity, Warranty	*Principal Location of Assured - Ocean Marine, Credit
*Point of origin of shipment or principal location of assured - Inland Marine	*Primary residence of Assured- Aircraft
*State in which employees regularly work - Group Accident and Health	

SCHEDULE Y - INFORMATION CONCERNING ACTIVITIES OF INSURER MEMBERS OF A HOLDING COMPANY GROUP

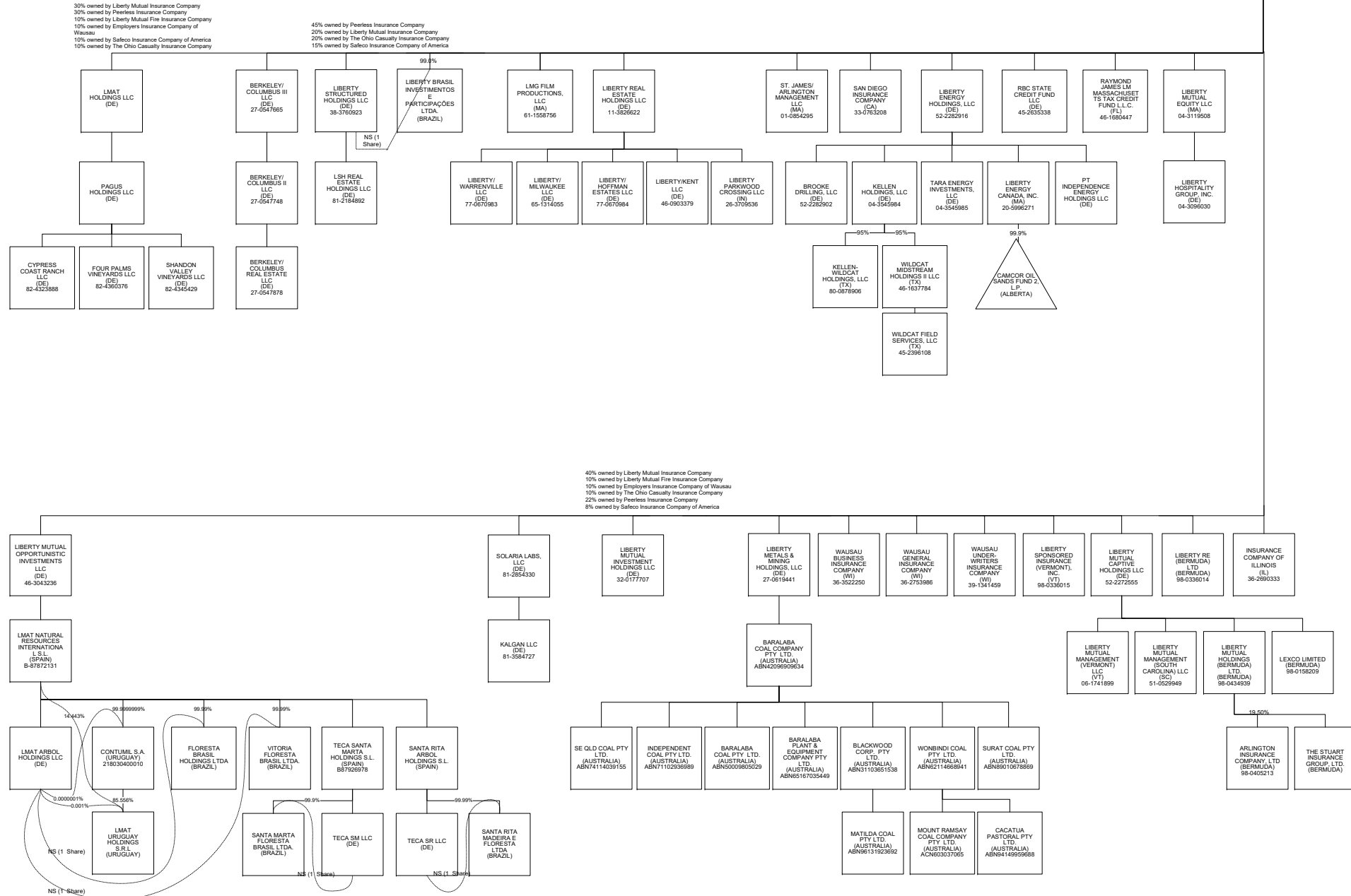
PART 1 - ORGANIZATIONAL CHART



SCHEDULE Y - INFORMATION CONCERNING ACTIVITIES OF INSURER MEMBERS OF A HOLDING COMPANY GROUP

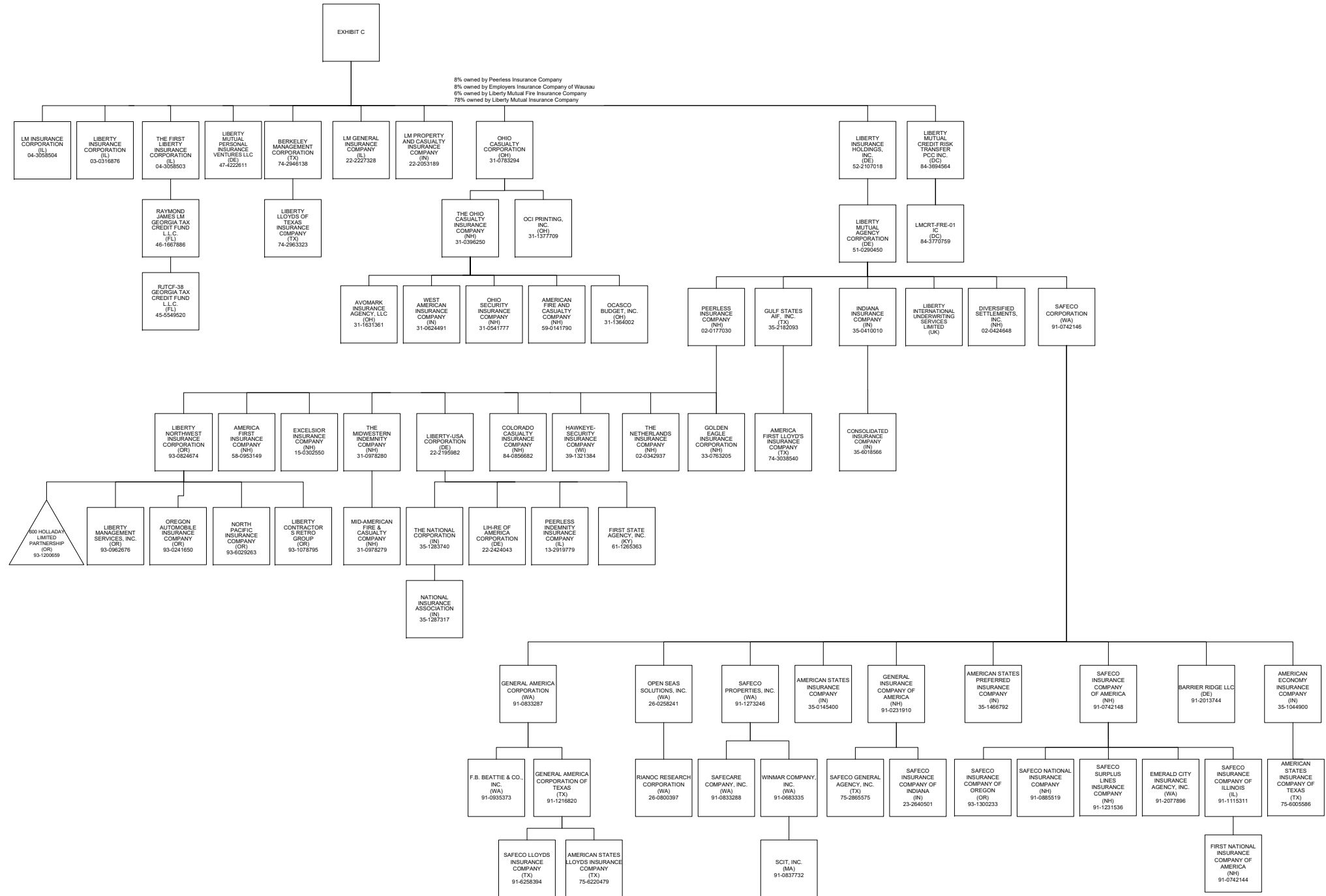
PART 1 - ORGANIZATIONAL CHART

EXHIBIT B



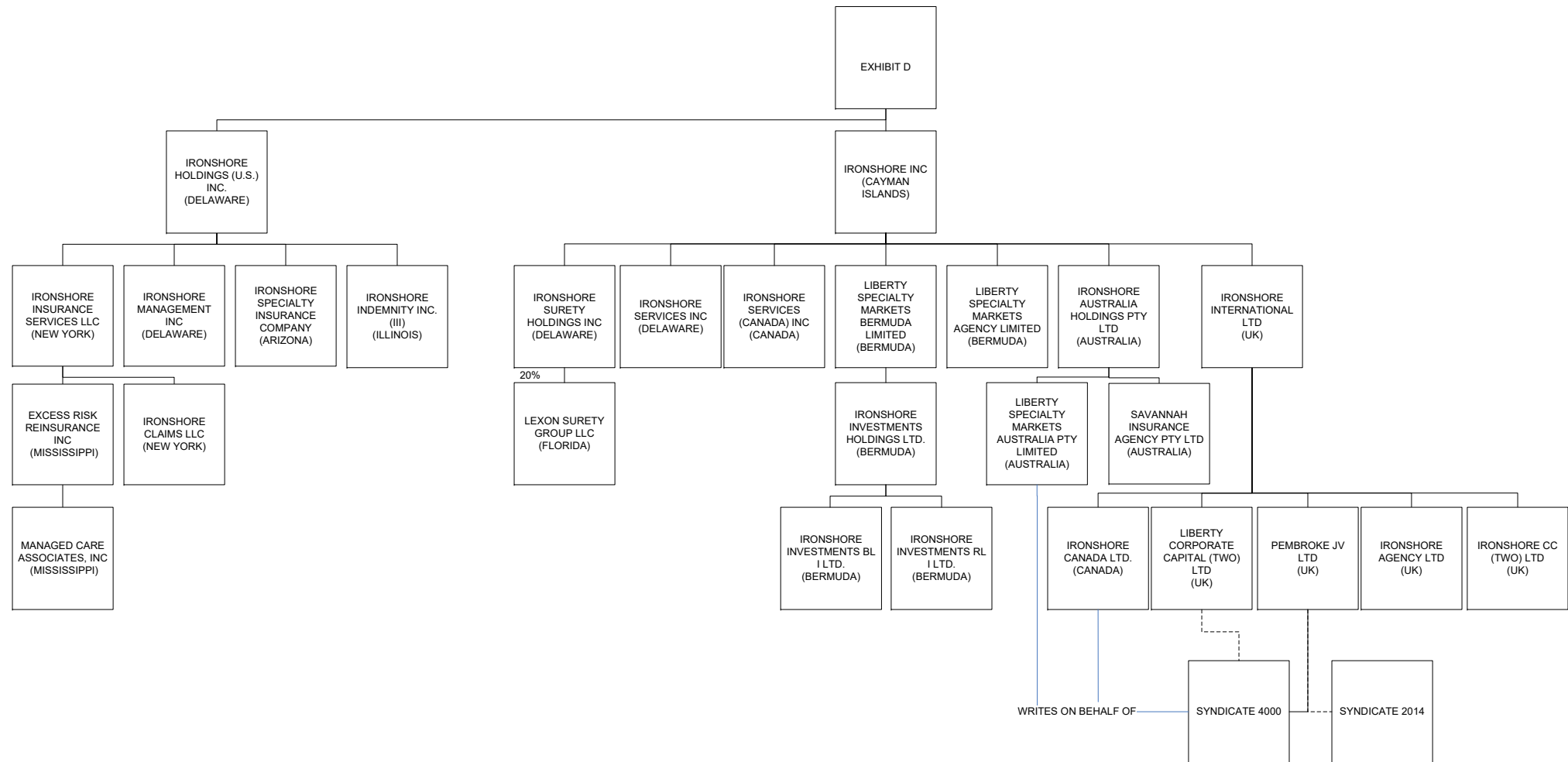
SCHEDULE Y - INFORMATION CONCERNING ACTIVITIES OF INSURER MEMBERS OF A HOLDING COMPANY GROUP

PART 1 - ORGANIZATIONAL CHART



SCHEDULE Y - INFORMATION CONCERNING ACTIVITIES OF INSURER MEMBERS OF A HOLDING COMPANY GROUP

PART 1 - ORGANIZATIONAL CHART



OVERFLOW PAGE FOR WRITE-INS

Page 94 - Continuation

SCHEDULE T - EXHIBIT OF PREMIUMS WRITTEN

Allocated By States and Territories

REMAINING WRITE-INS AGGREGATED AT LINE 58 FOR OTHER ALIEN	1 Active Status	Gross Premiums, Including Policy and Membership Fees Less Return Premiums and Premiums on Policies Not Taken		4 Dividends Paid or Credited to Policyholders on Direct Business	5 Direct Losses Paid (Deducting Salvage)	6 Direct Losses Incurred	7 Direct Losses Unpaid	8 Finance and Service Charges Not Included in Premiums	9 Direct Premium Written for Federal Purchasing Groups (Included in Col. 2)
		2 Direct Premiums Written	3 Direct Premiums Earned						
58004. GEO_Georgia	X X X	30,115	30,114			18,500	18,500		
58005. TWN_Taiwan	X X X	22,441	9,484			5,826	5,826		
58006. NLD_Netherlands	X X X	21,979	12,398			7,209	9,069		
58007. FIN_Finland	X X X	19,495	11,430			7,105	7,105		
58008. BRA_Brazil	X X X	18,013	16,260			9,127	20,090		
58009. PHL_Philippines	X X X	17,249	2,270				1,262		
58010. JPN_Japan	X X X	16,283	5,536			(998)	2,625		
58011. SGP_Singapore	X X X	16,103	7,735			4,776	4,776		
58012. IND_India	X X X	11,793	10,960			723	9,909		
58013. BEL_Belgium	X X X	10,980	15,284			(991)	8,356		
58014. DEU_Germany	X X X	9,939	13,218			1,901	6,575		
58015. MYS_Malaysia	X X X	9,897	1,328				740		
58016. CHN_China	X X X	9,829	1,390			(27,257)	(1,944)		
58017. CHL_Chile	X X X	8,346	4,893			3,042	3,042		
58018. GBR_United kingdom	X X X	7,425	4,117			2,914	10,490		
58019. IRL_Ireland	X X X	6,899	4,045			2,514	2,514		
58020. ARG_Argentina	X X X	3,204	1,759			923	1,026		
58021. MEX_Mexico	X X X	1,494	290			(72)	1,054		
58022. NZL_New Zealand	X X X	856	573			356	356		
58023. FRA_France	X X X	708	1,897			534	1,879		
58024. RUS_Russia	X X X	680	377				234		
58025. HKG_Hong Kong	X X X	361	212			(1)	242		
58026. POL_Poland	X X X	286	162			101	101		
58027. ISR_Israel	X X X	278	147			91	91		
58028. ITA_Italy	X X X	273	744			(1,731)	2,542		
58029. SWE_Sweden	X X X	208	120				75		
58030. HUN_Hungary	X X X	200	111			69	69		
58031. KOR_South Korea	X X X	156	83				51		
58032. DNK_Denmark	X X X	108	60			361	407		
58033. TUR_Turkey	X X X	31	17			(67,110)	(10,462)		
58034. BGD_Bangladesh	X X X	10	6				329,150		
58035. KWT_Kuwait	X X X	2	1				1,166		
58036. LUX_Luxembourg	X X X		1,651			253	253		
58037. BHS_Bahamas	X X X					(650)	829		
58038. AUT_Austria	X X X		473			(80)	435		
58039. CYM_Cayman Islands	X X X		21,054			(274,259)	(173,584)		
58040. ESP_Spain	X X X	(4,660)	9,257			3,602	6,947		
58041. ZAF_South Africa	X X X	(81,304)	(81,347)				15,767		
Total (Lines 58004 through 58150) (Page 94, Line 58998)	X X X	159,677	108,109			(303,222)	287,563		