

ANNUAL STATEMENT

OF THE

INSURANCE COMPANY OF ILLINOIS

of **HOFFMAN ESTATES**

in the state of **ILLINOIS**

TO THE

Insurance Department

OF THE

FOR THE YEAR ENDED

December 31, 2010

PROPERTY AND CASUALTY

2010



26700201020100100

ANNUAL STATEMENT

For the Year Ended December 31, 2010
OF THE CONDITION AND AFFAIRS OF THE

Insurance Company of Illinois

NAIC Group Code 0111 0111 **NAIC Company Code** 26700 **Employer's ID Number** 36-2690333
(Current Period) (Prior Period)

Organized under the Laws of Illinois, **State of Domicile or Port of Entry** Illinois
Country of Domicile United States of America

Incorporated/Organized: March 9, 1970 **Commenced Business** March 20, 1970

Statutory Home Office 2815 Forbs Ave., Suite 200, Hoffman Estates, IL 60192
(Street and Number) (City or Town, State and Zip Code)

Main Administrative Office: 175 Berkeley Street
(Street and Number)
Boston, MA 02116 617-357-9500
(City or Town, State and Zip Code) (Area Code) (Telephone Number)

Mail Address: 175 Berkeley Street, Boston, MA 02116
(Street and Number or P.O. Box) (City or Town, State and Zip Code)

Primary Location of Books and Records: 175 Berkeley Street Boston, MA 02116 617-357-9500
(Street and Number) (City or Town, State and Zip Code) (Area Code) (Telephone Number)

Internet Web Site Address www.LibertyMutualGroup.com

Statutory Statement Contact: Pamela Heenan 617-357-9500 x44689
(Name) (Area Code) (Telephone Number) (Extension)
Statutory.Compliance@LibertyMutual.com 617-574-5955
(E-Mail Address) (Fax Number)

OFFICERS

Chairman of the Board
James Paul Condryn, III #

	Name	Title
1.	<u>James Paul Condryn, III #</u>	<u>President and Chief Executive Officer</u>
2.	<u>Dexter Robert Legg</u>	<u>Secretary</u>
3.	<u>Laurance Henry Soyer Yahia #</u>	<u>Vice President and Treasurer</u>

VICE-PRESIDENTS

Name	Title	Name	Title
<u>Anthony Alexander Fontanes</u>	<u>VP and Chief Investment Officer</u>	<u>Dennis James Langwell</u>	<u>VP and Chief Financial Officer</u>

DIRECTORS OR TRUSTEES

<u>Deborah Lucille Michel</u>	<u>Stephen Douglas Hylka</u>	<u>John Derek Doyle</u>	<u>Christopher Charles Mansfield</u>
<u>Dexter Robert Legg #</u>	<u>Dennis James Langwell #</u>	<u>Mark Ardon Butler #</u>	<u>James Paul Condryn, III #</u>
<u>Anthony Alexander Fontanes #</u>			

State of Massachusetts

County of Suffolk ss

The officers of this reporting entity being duly sworn, each depose and say that they are the described officers of said reporting entity, and that on the reporting period stated above, all of the herein described assets were the absolute property of the said reporting entity, free and clear from any liens or claims thereon, except as herein stated, and that this statement, together with related exhibits, schedules and explanations therein contained, annexed or referred to, is a full and true statement of all the assets and liabilities and of the condition and affairs of the said reporting entity as of the reporting period stated above, and of its income and deductions therefrom for the period ended, and have been completed in accordance with the NAIC Annual Statement Instructions and Accounting Practices and Procedures manual except to the extent that: (1) state law may differ; or, (2) that state rules or regulations require differences in reporting not related to accounting practices and procedures, according to the best of their information, knowledge and belief, respectively. Furthermore, the scope of this attestation by the described officers also includes the related corresponding electronic filing with the NAIC, when required, that is an exact copy (except for formatting differences due to electronic filing) of the enclosed statement. The electronic filing may be requested by various regulators in lieu of or in addition to the enclosed statement.

<u>(Signature)</u> <u>James Paul Condryn, III #</u> <u>(Printed Name)</u> 1. <u>Chairman of the Board, President and Chief Executive Officer</u> <u>(Title)</u>	<u>(Signature)</u> <u>Dexter Robert Legg</u> <u>(Printed Name)</u> 2. <u>Secretary</u> <u>(Title)</u>	<u>(Signature)</u> <u>Laurance Henry Soyer Yahia #</u> <u>(Printed Name)</u> 3. <u>Vice President and Treasurer</u> <u>(Title)</u>
--	--	---

Subscribed and sworn to (or affirmed) before me on this
31st day of January, 2011, by

- a. Is this an original filing? Yes No
- b. If no: 1. State the amendment number
2. Date filed
3. Number of pages attached

ASSETS

	Current Year			Prior Year
	1	2	3	4
	Assets	Nonadmitted Assets	Net Admitted Assets (Cols. 1 - 2)	Net Admitted Assets
1. Bonds (Schedule D)	42,120,226		42,120,226	41,573,979
2. Stocks (Schedule D):				
2.1 Preferred stocks				
2.2 Common stocks				
3. Mortgage loans on real estate (Schedule B):				
3.1 First liens				
3.2 Other than first liens				
4. Real estate (Schedule A):				
4.1 Properties occupied by the company (less \$ 0 encumbrances)				
4.2 Properties held for the production of income (less \$ 0 encumbrances)				
4.3 Properties held for sale (less \$ 0 encumbrances)				
5. Cash (\$ 0, Schedule E - Part 1), cash equivalents (\$ 0, Schedule E - Part 2), and short-term investments (\$ 5,483,897, Schedule DA)	5,483,897		5,483,897	4,084,393
6. Contract loans (including \$ 0 premium notes)				
7. Derivatives				
8. Other invested assets (Schedule BA)				
9. Receivables for securities				
10. Securities lending reinvested collateral assets				
11. Aggregate write-ins for invested assets				
12. Subtotals, cash and invested assets (Lines 1 to 11)	47,604,123		47,604,123	45,658,372
13. Title plants less \$ 0 charged off (for Title insurers only)				
14. Investment income due and accrued	364,497		364,497	366,962
15. Premiums and considerations:				
15.1 Uncollected premiums and agents' balances in the course of collection				
15.2 Deferred premiums, agents' balances and installments booked but deferred and not yet due (including \$ 0 earned but unbilled premiums)				
15.3 Accrued retrospective premiums				
16. Reinsurance:				
16.1 Amounts recoverable from reinsurers	256,101		256,101	24,565
16.2 Funds held by or deposited with reinsured companies				
16.3 Other amounts receivable under reinsurance contracts				
17. Amounts receivable relating to uninsured plans				
18.1 Current federal and foreign income tax recoverable and interest thereon				
18.2 Net deferred tax asset	367,520	50,382	317,138	584,900
19. Guaranty funds receivable or on deposit				
20. Electronic data processing equipment and software				
21. Furniture and equipment, including health care delivery assets (\$ 0)				
22. Net adjustment in assets and liabilities due to foreign exchange rates				
23. Receivables from parent, subsidiaries and affiliates	291,728		291,728	12,132
24. Health care (\$ 0) and other amounts receivable				
25. Aggregate write-ins for other than invested assets				
26. Total assets excluding Separate Accounts, Segregated Accounts and Protected Cell Accounts (Lines 12 to 25)	48,883,969	50,382	48,833,587	46,646,931
27. From Separate Accounts, Segregated Accounts and Protected Cell Accounts				
28. Total (Lines 26 and 27)	48,883,969	50,382	48,833,587	46,646,931

DETAILS OF WRITE-IN LINES				
1101.				
1102.				
1103.				
1198. Summary of remaining write-ins for Line 11 from overflow page				
1199. Totals (Lines 1101 through 1103 plus 1198) (Line 11 above)				
2501.				
2502.				
2503.				
2598. Summary of remaining write-ins for Line 25 from overflow page				
2599. Totals (Lines 2501 through 2503 plus 2598) (Line 25 above)				

LIABILITIES, SURPLUS AND OTHER FUNDS

	1	2
	Current Year	Prior Year
1. Losses (Part 2A, Line 35, Column 8)		
2. Reinsurance payable on paid losses and loss adjustment expenses (Schedule F, Part 1, Column 6)		
3. Loss adjustment expenses (Part 2A, Line 35, Column 9)		
4. Commissions payable, contingent commissions and other similar charges		
5. Other expenses (excluding taxes, licenses and fees)		
6. Taxes, licenses and fees (excluding federal and foreign income taxes)		
7.1 Current federal and foreign income taxes (including \$ 0 on realized capital gains (losses))	350,564	100,050
7.2 Net deferred tax liability		
8. Borrowed money \$ 0 and interest thereon \$ 0		
9. Unearned premiums (Part 1A, Line 38, Column 5) (after deducting unearned premiums for ceded reinsurance of \$ 145,872 and including warranty reserves of \$ 0)		
10. Advance premium		
11. Dividends declared and unpaid:		
11.1 Stockholders		
11.2 Policyholders		
12. Ceded reinsurance premiums payable (net of ceding commissions)	17,386	23,521
13. Funds held by company under reinsurance treaties (Schedule F, Part 3, Column 19)		
14. Amounts withheld or retained by company for account of others		
15. Remittances and items not allocated		
16. Provision for reinsurance (Schedule F, Part 7)		
17. Net adjustments in assets and liabilities due to foreign exchange rates		
18. Drafts outstanding		
19. Payable to parent, subsidiaries and affiliates	260,075	14,407
20. Derivatives		
21. Payable for securities	1,043,313	
22. Payable for securities lending		
23. Liability for amounts held under uninsured plans		
24. Capital notes \$ 0 and interest thereon \$ 0		
25. Aggregate write-ins for liabilities		451,719
26. Total liabilities excluding protected cell liabilities (Lines 1 through 25)	1,671,338	589,697
27. Protected cell liabilities		
28. Total liabilities (Lines 26 and 27)	1,671,338	589,697
29. Aggregate write-ins for special surplus funds	165,553	362,970
30. Common capital stock	3,000,000	3,000,000
31. Preferred capital stock		
32. Aggregate write-ins for other than special surplus funds		
33. Surplus notes		
34. Gross paid in and contributed surplus	13,500,000	13,500,000
35. Unassigned funds (surplus)	30,496,696	29,194,264
36. Less treasury stock, at cost:		
36.1 0 shares common (value included in Line 30 \$ 0)		
36.2 0 shares preferred (value included in Line 31 \$ 0)		
37. Surplus as regards policyholders (Lines 29 to 35, less 36) (Page 4, Line 39)	47,162,249	46,057,234
38. Totals (Page 2, Line 28, Col. 3)	48,833,587	46,646,931

DETAILS OF WRITE-IN LINES		
2501. Collateral held for securities loaned		451,719
2502.		
2503.		
2598. Summary of remaining write-ins for Line 25 from overflow page		
2599. Totals (Lines 2501 through 2503 plus 2598) (Line 25 above)		451,719
2901. SSAP 10R incremental change	165,553	362,970
2902.		
2903.		
2998. Summary of remaining write-ins for Line 29 from overflow page		
2999. Totals (Lines 2901 through 2903 plus 2998) (Line 29 above)	165,553	362,970
3201.		
3202.		
3203.		
3298. Summary of remaining write-ins for Line 32 from overflow page		
3299. Totals (Lines 3201 through 3203 plus 3298) (Line 32 above)		

STATEMENT OF INCOME

	1	2
	Current Year	Prior Year
UNDERWRITING INCOME		
1. Premiums earned (Part 1, Line 35, Column 4)		
DEDUCTIONS:		
2. Losses incurred (Part 2, Line 35, Column 7)		
3. Loss adjustment expenses incurred (Part 3, Line 25, Column 1)		
4. Other underwriting expenses incurred (Part 3, Line 25, Column 2)		
5. Aggregate write-ins for underwriting deductions		
6. Total underwriting deductions (Lines 2 through 5)		
7. Net income of protected cells		
8. Net underwriting gain (loss) (Line 1 minus Line 6 plus Line 7)		
INVESTMENT INCOME		
9. Net investment income earned (Exhibit of Net Investment Income, Line 17)	1,449,009	1,490,776
10. Net realized capital gains (losses) less capital gains tax of \$ (14,679) (Exhibit of Capital Gains (Losses))	(27,260)	(31,887)
11. Net investment gain (loss) (Lines 9 + 10)	1,421,749	1,458,889
OTHER INCOME		
12. Net gain or (loss) from agents' or premium balances charged off (amount recovered \$ 0 amount charged off \$ 0)		
13. Finance and service charges not included in premiums		
14. Aggregate write-ins for miscellaneous income		(111)
15. Total other income (Lines 12 through 14)		(111)
16. Net income before dividends to policyholders, after capital gains tax and before all other federal and foreign income taxes (Lines 8 + 11 + 15)	1,421,749	1,458,778
17. Dividends to policyholders		
18. Net income, after dividends to policyholders, after capital gains tax and before all other federal and foreign income taxes (Line 16 minus Line 17)	1,421,749	1,458,778
19. Federal and foreign income taxes incurred	175,179	180,120
20. Net income (Line 18 minus Line 19) (to Line 22)	1,246,570	1,278,658
CAPITAL AND SURPLUS ACCOUNT		
21. Surplus as regards policyholders, December 31 prior year (Page 4, Line 39, Column 2)	46,057,234	44,283,746
22. Net income (from Line 20)	1,246,570	1,278,658
23. Net transfers (to) from Protected Cell accounts		
24. Change in net unrealized capital gains or (losses) less capital gains tax of \$ 44,173	82,035	(23,994)
25. Change in net unrealized foreign exchange capital gain (loss)		
26. Change in net deferred income tax	(185,027)	(113,806)
27. Change in nonadmitted assets (Exhibit of Nonadmitted Assets, Line 26, Col. 3)	158,854	269,660
28. Change in provision for reinsurance (Page 3, Line 16, Column 2 minus Column 1)		
29. Change in surplus notes		
30. Surplus (contributed to) withdrawn from protected cells		
31. Cumulative effect of changes in accounting principles		
32. Capital changes:		
32.1 Paid in		
32.2 Transferred from surplus (Stock Dividend)		
32.3 Transferred to surplus		
33. Surplus adjustments:		
33.1 Paid in		
33.2 Transferred to capital (Stock Dividend)		
33.3 Transferred from capital		
34. Net remittances from or (to) Home Office		
35. Dividends to stockholders		
36. Change in treasury stock (Page 3, Lines 36.1 and 36.2, Column 2 minus Column 1)		
37. Aggregate write-ins for gains and losses in surplus	(197,417)	362,970
38. Change in surplus as regards policyholders for the year (Lines 22 through 37)	1,105,015	1,773,488
39. Surplus as regards policyholders, as of December 31 current year (Lines 21 plus Line 38) (Page 3, Line 37)	47,162,249	46,057,234

DETAILS OF WRITE-IN LINES		
0501.		
0502.		
0503.		
0598. Summary of remaining write-ins for Line 05 from overflow page		
0599. Totals (Lines 0501 through 0503 plus 0598) (Line 05 above)		
1401. Other income/(expense)		(111)
1402.		
1403.		
1498. Summary of remaining write-ins for Line 14 from overflow page		
1499. Totals (Lines 1401 through 1403 plus 1498) (Line 14 above)		(111)
3701. SSAP 10R incremental change	(197,417)	362,970
3702.		
3703.		
3798. Summary of remaining write-ins for Line 37 from overflow page		
3799. Totals (Lines 3701 through 3703 plus 3798) (Line 37 above)	(197,417)	362,970

CASH FLOW

	1	2
Cash from Operations	Current Year	Prior Year
1. Premiums collected net of reinsurance	(6,135)	3,521
2. Net investment income	1,583,679	1,605,402
3. Miscellaneous income		(111)
4. Total (Lines 1 through 3)	1,577,544	1,608,812
5. Benefit and loss related payments	231,537	(316,216)
6. Net transfers to Separate Accounts, Segregated Accounts and Protected Cell Accounts		
7. Commissions, expenses paid and aggregate write-ins for deductions		
8. Dividends paid to policyholders		
9. Federal and foreign income taxes paid (recovered) net of \$ 0 tax on capital gains (losses)	(90,013)	141,280
10. Total (Lines 5 through 9)	141,524	(174,936)
11. Net cash from operations (Line 4 minus Line 10)	1,436,020	1,783,748
Cash from Investments		
12. Proceeds from investments sold, matured or repaid:		
12.1 Bonds	8,177,702	10,492,224
12.2 Stocks		
12.3 Mortgage loans		
12.4 Real estate		
12.5 Other invested assets		
12.6 Net gains (or losses) on cash, cash equivalents and short-term investments		(408)
12.7 Miscellaneous proceeds		
12.8 Total investment proceeds (Lines 12.1 to 12.7)	8,177,702	10,491,816
13. Cost of investments acquired (long-term only):		
13.1 Bonds	8,771,885	20,095,854
13.2 Stocks		
13.3 Mortgage loans		
13.4 Real estate		
13.5 Other invested assets		
13.6 Miscellaneous applications	(1,043,313)	153
13.7 Total investments acquired (Lines 13.1 to 13.6)	7,728,572	20,096,007
14. Net increase (decrease) in contract loans and premium notes		
15. Net cash from investments (Line 12.8 minus Line 13.7 and Line 14)	449,130	(9,604,191)
Cash from Financing and Miscellaneous Sources		
16. Cash provided (applied):		
16.1 Surplus notes, capital notes		
16.2 Capital and paid in surplus, less treasury stock		
16.3 Borrowed funds		
16.4 Net deposits on deposit-type contracts and other insurance liabilities		
16.5 Dividends to stockholders		
16.6 Other cash provided (applied)	(485,646)	(114,578)
17. Net cash from financing and miscellaneous sources (Lines 16.1 to Line 16.4 minus Line 16.5 plus Line 16.6)	(485,646)	(114,578)
RECONCILIATION OF CASH, CASH EQUIVALENTS AND SHORT-TERM INVESTMENTS		
18. Net change in cash, cash equivalents and short-term investments (Line 11, plus Lines 15 and 17)	1,399,504	(7,935,021)
19. Cash, cash equivalents and short-term investments:		
19.1 Beginning of year	4,084,393	12,019,414
19.2 End of year (Line 18 plus Line 19.1)	5,483,897	4,084,393

Note: Supplemental disclosures of cash flow information for non-cash transactions:

20.0001		
20.0002		
20.0003		

NONE Underwriting and Investment Exhibit - Part 1

NONE Underwriting and Investment Exhibit - Part 1A

UNDERWRITING AND INVESTMENT EXHIBIT

PART 1B – PREMIUMS WRITTEN

Line of Business	1	Reinsurance Assumed		Reinsurance Ceded		6
	Direct Business (a)	2 From Affiliates	3 From Non- Affiliates	4 To Affiliates	5 To Non- Affiliates	Net Premiums Written Cols. 1 + 2 + 3 - 4 - 5
1. Fire	159,756			159,756		
2. Allied lines	48,626			48,626		
3. Farmowners multiple peril						
4. Homeowners multiple peril	52,364			52,364		
5. Commercial multiple peril						
6. Mortgage guaranty						
8. Ocean marine						
9. Inland marine	3,800			3,800		
10. Financial guaranty						
11.1 Medical professional liability--occurrence						
11.2 Medical professional liability--claims-made						
12. Earthquake	271			271		
13. Group accident and health						
14. Credit accident and health (group and individual)						
15. Other accident and health						
16. Workers' compensation						
17.1 Other liability—occurrence	17,260			17,260		
17.2 Other liability—claims-made						
17.3 Excess Workers' Compensation						
18.1 Products liability—occurrence						
18.2 Products liability—claims-made						
19.1,19.2 Private passenger auto liability	(483)			(483)		
19.3,19.4 Commercial auto liability						
21. Auto physical damage	(272)			(272)		
22. Aircraft (all perils)						
23. Fidelity						
24. Surety						
26. Burglary and theft						
27. Boiler and machinery						
28. Credit						
29. International						
30. Warranty						
31. Reinsurance-Nonproportional Assumed Property	X X X					
32. Reinsurance-Nonproportional Assumed Liability	X X X					
33. Reinsurance-Nonproportional Assumed Financial Lines	X X X					
34. Aggregate write-ins for other lines of business						
35. TOTALS	281,322			281,322		

DETAILS OF WRITE-IN LINES						
3401.						
3402.						
3403.						
3498. Sum of remaining write-ins for Line 34 from overflow page						
3499. Totals (Lines 3401 through 3403 plus 3498) (Line 34 above)						

(a) Does the company's direct premiums written include premiums recorded on an installment basis? Yes [] No [X]

If yes: 1. The amount of such installment premiums \$ 0

2. Amount at which such installment premiums would have been reported had they been recorded on an annualized basis \$ 0

UNDERWRITING AND INVESTMENT EXHIBIT PART 2 – LOSSES PAID AND INCURRED

Line of Business	Losses Paid Less Salvage				5 Net Losses Unpaid Current Year (Part 2A, Col. 8)	6 Net Losses Unpaid Prior Year	7 Losses Incurred Current Year (Cols. 4 + 5 - 6)	8 Percentage of Losses Incurred (Col. 7, Part 2) to Premiums Earned (Col. 4, Part 1)
	1 Direct Business	2 Reinsurance Assumed	3 Reinsurance Recovered	4 Net Payments (Cols. 1 + 2 - 3)				
1. Fire	149,932		149,932					
2. Allied lines	17,169		17,169					
3. Farmowners multiple peril								
4. Homeowners multiple peril	38,347		38,347					
5. Commercial multiple peril								
6. Mortgage guaranty								
8. Ocean marine								
9. Inland marine								
10. Financial guaranty								
11.1 Medical professional liability—occurrence								
11.2 Medical professional liability—claims-made								
12. Earthquake								
13. Group accident and health								
14. Credit accident and health (group and individual)								
15. Other accident and health								
16. Workers' compensation								
17.1 Other liability—occurrence	10,508,354		10,508,354					
17.2 Other liability—claims-made								
17.3 Excess Workers' Compensation								
18.1 Products liability—occurrence								
18.2 Products liability—claims-made								
19.1,19.2 Private passenger auto liability	470,846		470,846					
19.3,19.4 Commercial auto liability								
21. Auto physical damage	33,187		33,187					
22. Aircraft (all perils)								
23. Fidelity								
24. Surety								
26. Burglary and theft								
27. Boiler and machinery								
28. Credit								
29. International								
30. Warranty								
31. Reinsurance-Nonproportional Assumed Property	X X X							
32. Reinsurance-Nonproportional Assumed Liability	X X X							
33. Reinsurance-Nonproportional Assumed Financial Lines	X X X							
34. Aggregate write-ins for other lines of business								
35. TOTALS	11,217,835		11,217,835					

DETAILS OF WRITE-IN LINES							
3401.							
3402.							
3403.							
3498. Sum. of remaining write-ins for Line 34 from overflow page							
3499. Totals (Lines 3401 through 3403 plus 3498) (Line 34 above)							

UNDERWRITING AND INVESTMENT EXHIBIT PART 2A – UNPAID LOSSES AND LOSS ADJUSTMENT EXPENSES

Line of Business	Reported Losses				Incurred But Not Reported			8 Net Losses Unpaid (Cols. 4 + 5 + 6 - 7)	9 Net Unpaid Loss Adjustment Expenses
	1 Direct	2 Reinsurance Assumed	3 Deduct Reinsurance Recoverable from Authorized and Unauthorized Companies	4 Net Losses Excl. Incurred But Not Reported (Cols. 1 + 2 - 3)	5 Direct	6 Reinsurance Assumed	7 Reinsurance Ceded		
1. Fire	310,776		310,776		3,793		3,793		
2. Allied lines	10,000		10,000		1,103		1,103		
3. Farmowners multiple peril									
4. Homeowners multiple peril	102,000		102,000		1,311		1,311		
5. Commercial multiple peril									
6. Mortgage guaranty									
8. Ocean marine									
9. Inland marine									
10. Financial guaranty									
11.1 Medical professional liability—occurrence									
11.2 Medical professional liability—claims-made									
12. Earthquake									
13. Group accident and health								(a)	
14. Credit accident and health (group and individual)								(a)	
15. Other accident and health									
16. Workers' compensation									
17.1 Other liability—occurrence	58,945,810		58,945,810		19,485,804		19,485,804		
17.2 Other liability—claims-made									
17.3 Excess Workers' Compensation					1,081		1,081		
18.1 Products liability—occurrence									
18.2 Products liability—claims-made									
19.1,19.2 Private passenger auto liability	757,800		757,800		121,944		121,944		
19.3,19.4 Commercial auto liability									
21. Auto physical damage									
22. Aircraft (all perils)									
23. Fidelity									
24. Surety									
26. Burglary and theft									
27. Boiler and machinery									
28. Credit									
29. International									
30. Warranty									
31. Reinsurance-Nonproportional Assumed Property	X X X				X X X				
32. Reinsurance-Nonproportional Assumed Liability	X X X				X X X				
33. Reinsurance-Nonproportional Assumed Financial Lines	X X X				X X X				
34. Aggregate write-ins for other lines of business									
35. TOTALS	60,126,386		60,126,386		19,615,036		19,615,036		
DETAILS OF WRITE-IN LINES									
3401.									
3402.									
3403.									
3498. Sum. of remaining write-ins for Line 34 from overflow page									
3499. Totals (Lines 3401 through 3403 plus 3498) (Line 34 above)									

(a) Including \$ 0 for present value of life indemnity claims.

UNDERWRITING AND INVESTMENT EXHIBIT

PART 3 - EXPENSES

	1	2	3	4
	Loss Adjustment Expenses	Other Underwriting Expenses	Investment Expenses	Total
1. Claim adjustment services:				
1.1 Direct	(85,850)			(85,850)
1.2 Reinsurance assumed				
1.3 Reinsurance ceded	(85,850)			(85,850)
1.4 Net claim adjustment services (1.1 + 1.2 - 1.3)				
2. Commission and brokerage:				
2.1 Direct, excluding contingent		45,240		45,240
2.2 Reinsurance assumed, excluding contingent				
2.3 Reinsurance ceded, excluding contingent		45,240		45,240
2.4 Contingent—direct				
2.5 Contingent—reinsurance assumed				
2.6 Contingent—reinsurance ceded				
2.7 Policy and membership fees				
2.8 Net commission and brokerage (2.1+2.2-2.3+2.4+2.5-2.6+2.7)				
3. Allowances to manager and agents			1	1
4. Advertising			471	471
5. Boards, bureaus and associations			16	16
6. Surveys and underwriting reports			542	542
7. Audit of assureds' records				
8. Salary and related items:				
8.1 Salaries			54,010	54,010
8.2 Payroll taxes			3,824	3,824
9. Employee relations and welfare			4,096	4,096
10. Insurance			455	455
11. Directors' fees				
12. Travel and travel items			1,190	1,190
13. Rent and rent items			1,389	1,389
14. Equipment			1,501	1,501
15. Cost or depreciation of EDP equipment and software			984	984
16. Printing and stationery			184	184
17. Postage, telephone and telegraph, exchange and express			1,821	1,821
18. Legal and auditing			2,588	2,588
19. Totals (Lines 3 to 18)			73,072	73,072
20. Taxes, licenses and fees:				
20.1 State and local insurance taxes deducting guaranty association credits of \$ 0				
20.2 Insurance department licenses and fees				
20.3 Gross guaranty association assessments				
20.4 All other (excluding federal and foreign income and real estate)				
20.5 Total taxes, licenses and fees (20.1 + 20.2 + 20.3 + 20.4)				
21. Real estate expenses				
22. Real estate taxes				
23. Reimbursements by uninsured plans				
24. Aggregate write-ins for miscellaneous expenses			12,102	12,102
25. Total expenses incurred			85,174	(a) 85,174
26. Less unpaid expenses—current year				
27. Add unpaid expenses—prior year				
28. Amounts receivable relating to uninsured plans, prior year				
29. Amounts receivable relating to uninsured plans, current year				
30. TOTAL EXPENSES PAID (Lines 25 - 26 + 27 - 28 + 29)			85,174	85,174

DETAILS OF WRITE-IN LINES				
2401. Other expenses			12,102	12,102
2402.				
2403.				
2498. Sum of remaining write-ins for Line 24 from overflow page				
2499. Totals (Lines 2401 through 2403 plus 2498) (Line 24 above)			12,102	12,102

(a) Includes management fees of \$ 85,174 to affiliates and \$ 0 to non-affiliates.

EXHIBIT OF NET INVESTMENT INCOME

	1 Collected During Year	2 Earned During Year
1. U.S. Government bonds	(a) 832,072	852,926
1.1 Bonds exempt from U.S. tax	(a) 531,969	500,694
1.2 Other bonds (unaffiliated)	(a) 168,129	174,308
1.3 Bonds of affiliates	(a)	
2.1 Preferred stocks (unaffiliated)	(b)	
2.11 Preferred stocks of affiliates	(b)	
2.2 Common stocks (unaffiliated)		
2.21 Common stocks of affiliates		
3. Mortgage loans	(c)	
4. Real estate	(d)	
5. Contract loans		
6. Cash, cash equivalents and short-term investments	(e) 3,655	5,431
7. Derivative instruments	(f)	
8. Other invested assets		
9. Aggregate write-ins for investment income	828	828
10. Total gross investment income	1,536,653	1,534,187
11. Investment expenses		(g) 85,174
12. Investment taxes, licenses and fees, excluding federal income taxes		(g)
13. Interest expense		(h)
14. Depreciation on real estate and other invested assets		(i)
15. Aggregate write-ins for deductions from investment income		
16. Total deductions (Lines 11 through 15)		85,174
17. Net investment income (Line 10 minus Line 16)		1,449,013

DETAILS OF WRITE-IN LINES		
0901. Miscellaneous Income/ (Expense)	828	828
0902.		
0903.		
0998. Summary of remaining write-ins for Line 09 from overflow page		
0999. Totals (Lines 0901 through 0903) plus 0998 (Line 09 above)	828	828
1501.		
1502.		
1503.		
1598. Summary of remaining write-ins for Line 15 from overflow page		
1599. Totals (Lines 1501 through 1503) plus 1598 (Line 15 above)		

- (a) Includes \$ 17,974 accrual of discount less \$ 150,180 amortization of premium and less \$ 25,302 paid for accrued interest on purchases.
- (b) Includes \$ 0 accrual of discount less \$ 0 amortization of premium and less \$ 0 paid for accrued dividends on purchases.
- (c) Includes \$ 0 accrual of discount less \$ 0 amortization of premium and less \$ 0 paid for accrued interest on purchases.
- (d) Includes \$ 0 for company's occupancy of its own buildings; and excludes \$ 0 interest on encumbrances.
- (e) Includes \$ 0 accrual of discount less \$ 86 amortization of premium and less \$ 1,494 paid for accrued interest on purchases.
- (f) Includes \$ 0 accrual of discount less \$ 0 amortization of premium.
- (g) Includes \$ 0 investment expenses and \$ 0 investment taxes, licenses and fees, excluding federal income taxes, attributable to segregated and Separate Accounts.
- (h) Includes \$ 0 interest on surplus notes and \$ 0 interest on capital notes.
- (i) Includes \$ 0 depreciation on real estate and \$ 0 depreciation on other invested assets.

EXHIBIT OF CAPITAL GAINS (LOSSES)

	1 Realized Gain (Loss) on Sales or Maturity	2 Other Realized Adjustments	3 Total Realized Capital Gain (Loss) (Columns 1 + 2)	4 Change in Unrealized Capital Gain (Loss)	5 Change in Unrealized Foreign Exchange Capital Gain (Loss)
1. U.S. Government bonds					
1.1 Bonds exempt from U.S. tax	(43,819)		(43,819)	118,533	
1.2 Other bonds (unaffiliated)	2,835	(954)	1,881	7,675	
1.3 Bonds of affiliates					
2.1 Preferred stocks (unaffiliated)					
2.11 Preferred stocks of affiliates					
2.2 Common stocks (unaffiliated)					
2.21 Common stocks of affiliates					
3. Mortgage loans					
4. Real estate					
5. Contract loans					
6. Cash, cash equivalents and short-term investments					
7. Derivative instruments					
8. Other invested assets					
9. Aggregate write-ins for capital gains (losses)					
10. Total capital gains (losses)	(40,984)	(954)	(41,938)	126,208	

DETAILS OF WRITE-IN LINES					
0901.					
0902.					
0903.					
0998. Summary of remaining write-ins for Line 09 from overflow page					
0999. Totals (Lines 0901 through 0903) plus 0998 (Line 09 above)					

EXHIBIT OF NONADMITTED ASSETS

	1	2	3
	Current Year Total Nonadmitted Assets	Prior Year Total Nonadmitted Assets	Change in Total Nonadmitted Assets (Col. 2 - Col. 1)
1. Bonds (Schedule D)			
2. Stocks (Schedule D):			
2.1 Preferred stocks			
2.2 Common stocks			
3. Mortgage loans on real estate (Schedule B):			
3.1 First liens			
3.2 Other than first liens			
4. Real estate (Schedule A):			
4.1 Properties occupied by the company			
4.2 Properties held for the production of income			
4.3 Properties held for sale			
5. Cash (Schedule E - Part 1), cash equivalents (Schedule E - Part 2), and short-term investments (Schedule DA)			
6. Contract loans			
7. Derivatives			
8. Other invested assets (Schedule BA)			
9. Receivables for securities			
10. Securities lending reinvested collateral assets			
11. Aggregate write-ins for invested assets			
12. Subtotals, cash and invested assets (Lines 1 to 11)			
13. Title plants (for Title insurers only)			
14. Investment income due and accrued			
15. Premiums and considerations:			
15.1 Uncollected premiums and agents' balances in the course of collection			
15.2 Deferred premiums, agents' balances and installments booked but deferred and not yet due			
15.3 Accrued retrospective premiums			
16. Reinsurance:			
16.1 Amounts recoverable from reinsurers			
16.2 Funds held by or deposited with reinsured companies			
16.3 Other amounts receivable under reinsurance contracts			
17. Amounts receivable relating to uninsured plans			
18.1 Current federal and foreign income tax recoverable and interest thereon			
18.2 Net deferred tax asset	50,382	11,820	(38,562)
19. Guaranty funds receivable or on deposit			
20. Electronic data processing equipment and software			
21. Furniture and equipment, including health care delivery assets			
22. Net adjustment in assets and liabilities due to foreign exchange rates			
23. Receivables from parent, subsidiaries and affiliates			
24. Health care and other amounts receivable			
25. Aggregate write-ins for other than invested assets			
26. Total assets excluding Separate Accounts, Segregated Accounts and Protected Cell Accounts (Lines 12 to 25)	50,382	11,820	(38,562)
27. From Separate Accounts, Segregated Accounts and Protected Cell Accounts			
28. Total (Lines 26 and 27)	50,382	11,820	(38,562)

DETAILS OF WRITE-IN LINES			
1101.			
1102.			
1103.			
1198. Summary of remaining write-ins for Line 11 from overflow page			
1199. Totals (Lines 1101 through 1103 plus 1198) (Line 11 above)			
2501.			
2502.			
2503.			
2598. Summary of remaining write-ins for Line 25 from overflow page			
2599. Totals (Lines 2501 through 2503 plus 2598) (Line 25 above)			

NOTES TO FINANCIAL STATEMENTS

Note 1 - Summary of Significant Accounting Policies

A. Accounting Practices

Effective January 1, 2001, and subject to any deviations prescribed or permitted by the State of Illinois, the accompanying financial statements of Insurance Company of Illinois (the "Company") have been prepared in conformity with the National Association of Insurance Commissioners ("NAIC") *Accounting Practices and Procedures Manual* ("APP Manual").

B. Use of Estimates in the Preparation of the Financial Statements

The preparation of financial statements requires management to make estimates and assumptions that affect the reported amounts of assets, liabilities, revenues, and expenses. It also requires estimates in the disclosure of contingent assets and liabilities. Actual results could differ from these estimates.

C. Accounting Policies

Premiums are earned over the terms of the related policies and reinsurance contracts. Unearned premium reserves are established to cover the unexpired portion of premiums written. Such reserves are computed by pro-rata methods. Expenses incurred in connection with acquiring new insurance business, including acquisition costs such as sales commissions, are charged to operations as incurred. Expenses incurred are reduced for ceding allowances received or receivable.

In addition, the Company applies the following accounting policies, where applicable:

- A. Short term investments are carried at cost, adjusted where appropriate for amortization of premium or discount, or fair value as specified by the Purposes and Procedures Manual of the NAIC Securities Valuation Office (SVO Manual).
- B. Bonds are carried at cost, adjusted where appropriate for amortization of premium or discount, or fair value as specified by the SVO Manual.
- C. Common stocks are carried at fair value, except that investments in stocks of subsidiaries, controlled and affiliated ("SCA") companies are carried according to Note 1C(7).
- D. Preferred stocks are carried at cost or fair value as specified by the SVO Manual. Preferred stocks of SCA companies are carried according to Note 1C(7).
- E. Mortgage loans are carried at unpaid principal balances, less impairments as specified by the SVO Manual.
- F. Mortgage backed/asset backed securities are carried at amortized cost or fair value based on guidance in the SVO Manual. Prepayment assumptions for mortgage backed/asset backed securities are updated monthly using the Bloomberg data service. The retrospective adjustment method is used to value all mortgage backed/asset backed securities.
- G. Investments in SCA companies are carried in accordance with SSAP No. 97, *Investment in Subsidiaries, Controlled Entities and Affiliates*, and the SVO Manual.
- H. Investments in joint ventures, partnerships, and limited liability companies are carried in accordance with SSAP No. 48, *Joint Ventures, Partnerships and Limited Liability Companies*, and the SVO Manual.
- I. Derivative Securities, refer to Note 8.
- J. Investment income is anticipated as a factor in the premium deficiency calculation, in accordance with SSAP No. 53, *Property Casualty Contracts - Premiums*. Refer to Note 30.
- K. Unpaid losses and loss adjustment expenses include an amount determined from individual case estimates and loss reports and an amount, based on past experience, for losses incurred but not reported. Such liabilities are necessarily based on assumptions and estimates, and while management believes the amount is adequate, the ultimate liability may be in excess of or less than the amount provided. The methods, for making such estimates and for establishing the resulting liability, are continually reviewed and follow current standards of practice. Any adjustments to the liability are reflected in the period that they are determined.
- L. The Company did not change its capitalization policy in 2010.
- M. The Company has no pharmaceutical rebate receivables.

Note 2 - Accounting Changes and Correction of Errors

- A. There were no material changes in accounting principles or corrections of errors during the year.

Note 3 - Business Combinations and Goodwill

A. Statutory Purchase Method

The Company did not enter into any statutory purchases during the year.

NOTES TO FINANCIAL STATEMENTS

B. Statutory Mergers

The Company did not enter into any statutory mergers during the year.

C. Impairment Loss

The Company did not recognize an impairment loss during the period.

Note 4 - Discontinued Operations

The Company has no discontinued operations.

Note 5 - Investments

A. Mortgage Loans, including Mezzanine Real Estate Loans

The Company does not invest in Mortgage Loans.

B. Debt Restructuring

Not applicable

C. Reverse Mortgages

The Company has no reverse mortgages.

D. Loaned Backed Securities

1. Prepayment speed assumptions are updated monthly with data sourced from the Bloomberg data service. Not used.
2. All Loaned Backed Securities with a recognized other-than-temporary impairment disclosed in the aggregate during 2010 as of December 31, 2010: None
3. Each Loaned Backed Security with a recognized other-than-temporary impairment held by the Company at December 31, 2010:

1	2	3	4	5	6	7
CUSIP	Book/Adj Carrying Value Amortized cost before current period OTTI	Projected Cash Flows	Recognized other-than-temporary impairment	Amortized cost after other-than-temporary impairment	Fair Value at time of OTTI	Date of Financial Statement Where Report
59023XAB2	44,319	38,766	5,553	38,766	38,824	3/31/2009
59023XAB2	29,389	25,508	3,881	25,508	20,306	12/31/2009
59023XAB2	19,440	18,978	462	18,978	14,848	3/31/2010
61749BAB9	46,252	43,934	2,319	43,934	28,200	12/31/2009
61749BAB9	38,643	38,302	341	38,302	31,250	3/31/2010
61749BAB9	31,193	31,042	151	31,042	28,844	12/31/2010

4. All impaired Loaned Backed Securities for which an other-than-temporary impairment has not been recognized in earnings as a realized loss as of December 31, 2010:

	1	2
	Less Than 12 Months	Greater Than 12 Months
Gross Unrealized Loss	(14,789)	(3,386)
Fair Value of Securities with Unrealized Losses	3,114,816	48,960

5. The Company reviews fixed income securities for impairment on a quarterly basis. Securities are reviewed for both quantitative and qualitative considerations including, but not limited to: (a) the extent of the decline in fair value below book value, (b) the duration of the decline, (c) significant adverse changes in the financial condition or near term prospects of the investment or issuer, (d) significant change in the business climate or credit ratings of the issuer, (e) general market conditions and volatility, (f) industry factors, and (g) the past impairment of the security holding or the issuer. If the Company believes a decline in the value of a particular investment is temporary, the decline is recorded as an unrealized loss in policyholders' equity. If the decline is believed to be "other-than-temporary," and the Company believes it will not be able to collect all cash flows due on its fixed income securities, then the carrying value of the investment is written down to the expected cash flow amount and a realized loss is recorded as a credit impairment.

E. Repurchase Agreements and Securities Lending

1. The Company did not enter into any repurchase agreements during the year.
2. The Company maintained collateral for loaned securities.

NOTES TO FINANCIAL STATEMENTS

- (1) For loaned securities, Company policies require a minimum of 102% of the fair value of securities loaned to be maintained as collateral. Cash collateral received is invested in short-term investments.
- (2) The Company has not pledged any of its assets as collateral.
- (3) Sources of collateral are cash and securities. Cash collateral is reinvested by the lending agent in short term securities.

3. Aggregate Amount of Contractually open cash collateral positions:

Aging of Collateral	Total Fair Value
Open	\$ 0
30 Days or Less	
31 to 60 Days	
61 to 90 Days	
Greater than 90 Days	
Sub-Total	-
Securities Received	4,160,451
Total Collateral Received	\$ 4,160,451

4. Securities Lending Transactions Administered by an Affiliated Agent

The Company's security lending transactions are not administered by an affiliate agent.

5. Collateral Reinvestment

a. Aggregate Amount Cash Collateral Reinvested

	Amortized Cost	Fair Value
Open		
30 Days or Less		
31 to 60 Days		
61 to 90 Days		
90 to 120 Days		
121 to 180 Days		
181 to 365 Days		
1 to 2 Years		
2 to 3 Years		
Greater than 3 Years		
Subtotal		
Securities Received	\$ 4,160,451	\$ 4,160,451
Total Collateral Reinvested	\$ 4,160,451	\$ 4,160,451

- b. Maturity profile of the cash reinvestment program sufficiently matches loan profile with liquidity demands consistent with an open loan program.

F. Real Estate

The Company does not own real estate.

G. Investments in Low-Income Housing Tax Credits

The Company does not hold investments in low-income housing tax credits.

Note 6 - Joint Ventures, Partnerships & Limited Liability Companies

A. Investments in joint ventures, partnerships and limited liability companies that exceed 10% of its admitted assets.

The Company has no investments in joint ventures, partnerships, or limited liability companies.

B. Impairments on joint ventures, partnerships, or limited liability companies.

The Company does not own any investments in joint ventures, partnerships, and limited liability companies.

Note 7 - Investment Income

A. Accrued Investment Income

The Company does not admit investment income due and accrued if amounts are over 90 days past due (over 180 days for mortgage loans in default).

NOTES TO FINANCIAL STATEMENTS

B. Amounts Nonadmitted

No amounts were excluded as of December 31, 2010.

Note 8 - Derivative Instruments

The Company's investment activities do not include derivatives. However, the Company may acquire derivatives as additions to bond, common stock, or preferred stock investments. These derivatives are ancillary to the overall investment and are immaterial to the underlying investment portfolio.

Note 9 - Income Taxes

A. The components of the net deferred tax assets (DTAs) and liabilities (DTLs) recognized in the Company's Assets, Liabilities, Surplus and Other Funds are as follows:

	December 31, 2010			December 31, 2009			Change		
	(1)	(2)	(3)	(4)	(5)	(6)	(7)	(8)	(9)
			(Col 1 + 2)			(Col 4 + 5)	(Col 1 - 4)	(Col 2- 5)	(Col 7 + 8)
	Ordinary	Capital	Total	Ordinary	Capital	Total	Ordinary	Capital	Total
Gross Deferred Tax Assets	417,706	35,564	453,270	606,705	54,925	661,630	(188,999)	(19,361)	(208,360)
Statutory Valuation Allowance Adjustment	0	0	0	0	0	0	0	0	0
Adjusted Gross Deferred Tax Assets	417,706	35,564	453,270	606,705	54,925	661,630	(188,999)	(19,361)	(208,360)
Deferred Tax Liabilities	(48,302)	(37,448)	(85,750)	(685)	(64,225)	(64,910)	(47,617)	26,777	(20,840)
Net DTA (DTL)	369,404	(1,884)	367,520	606,020	(9,300)	596,720	(236,616)	7,416	(229,200)
Deferred Tax Assets Nonadmitted	(50,382)	0	(50,382)	(11,820)	0	(11,820)	(38,562)	0	(38,562)
Net Admitted DTA (DTL)	319,022	(1,884)	317,138	594,200	(9,300)	584,900	(275,178)	7,416	(267,762)

The Company has elected to admit additional DTAs pursuant to SSAP No. 10R, paragraph 10e. The current period election does not differ from the prior reporting period.

The amount of each result or component of the calculation, by tax character, of paragraphs 10a., 10bi., 10bii., 10c.:

	December 31, 2010			December 31, 2009			Change		
	(1)	(2)	(3)	(4)	(5)	(6)	(7)	(8)	(9)
			(Col 1 + 2)			(Col 4 + 5)	(Col 1 - 4)	(Col 2- 5)	(Col 7 + 8)
	Ordinary	Capital	Total	Ordinary	Capital	Total	Ordinary	Capital	Total
Recoverable through loss carrybacks (10a.)	151,584	0	151,584	149,000	4,000	153,000	2,584	(4,000)	(1,416)
Lesser of:									
Expected to be recognized within one year (10bi.)	0	0	0	68,930	0	68,930	(68,930)	0	(68,930)
10% of adjusted capital and surplus (10bii.)			4,639,158			4,497,200			
Adj. gross DTAs offset against existing DTLs (10c.)	48,302	37,448	85,750	685	64,225	64,910	47,617	(26,777)	20,840
Total	199,886	37,448	237,334	218,615	68,225	286,840	(18,729)	(30,777)	(49,506)

The amount of each result or component of the calculation, by tax character, of paragraphs 10ei., 10eia., 10eib., and 10eiii.:

	December 31, 2010			December 31, 2009			Change		
	(1)	(2)	(3)	(4)	(5)	(6)	(7)	(8)	(9)
			(Col 1 + 2)			(Col 4 + 5)	(Col 1 - 4)	(Col 2- 5)	(Col 7 + 8)
	Ordinary	Capital	Total	Ordinary	Capital	Total	Ordinary	Capital	Total
Recoverable through loss carrybacks (10ei.)	243,847		243,847	149,000	4,000	153,000	94,847	(4,000)	90,847
Lesser of:									
Expected to be recognized within three years (10eia.)	73,290	0	73,290	431,900	0	431,900	(358,610)	0	(358,610)
15% of adjusted capital and surplus (10eib.)			6,958,737			6,745,800			
Adj. gross DTAs offset against existing DTLs (10eiii.)	48,302	37,448	85,750	685	64,225	64,910	47,617	(26,777)	20,840
Total	365,439	37,448	402,887	581,585	68,225	649,810	(216,146)	(30,777)	(246,923)

	December 31, 2010	December 31, 2009	Change
Used in SSAP No. 10R, Paragraph 10.d.			
Total Adjusted Capital	46,996,696	45,694,264	1,302,432
Authorized Control Level	118,337	344,386	(226,049)

NOTES TO FINANCIAL STATEMENTS

The following amounts result from the calculation in paragraphs 10a., 10b., and 10c.:

	December 31, 2010			December 31, 2009			Change		
	(1)	(2)	(3)	(4)	(5)	(6)	(7)	(8)	(9)
			(Col 1 + 2)			(Col 4 + 5)	(Col 1 - 4)	(Col 2- 5)	(Col 7 + 8)
	Ordinary	Capital	Total	Ordinary	Capital	Total	Ordinary	Capital	Total
Admitted Deferred Tax Assets	151,584	0	151,584	221,930	0	221,930	(70,346)	0	(70,346)
Admitted Assets			48,668,033			46,283,961			2,384,072
Adjusted Statutory Surplus			46,996,696			45,694,264			1,302,432
Total Adjusted Capital from DTAs			46,996,696			45,694,264			1,302,432

Increase due to SSAP No. 10R, Paragraph 10.e.	December 31, 2010			December 31, 2009			Change		
	(1)	(2)	(3)	(4)	(5)	(6)	(7)	(8)	(9)
			(Col 1 + 2)			(Col 4 + 5)	(Col 1 - 4)	(Col 2- 5)	(Col 7 + 8)
	Ordinary	Capital	Total	Ordinary	Capital	Total	Ordinary	Capital	Total
Admitted Deferred Tax Assets	165,554	0	165,554	362,970	0	362,970	(197,416)	0	(197,416)
Admitted Assets			48,833,587			46,646,931			2,186,656
Adjusted Statutory Surplus			47,162,249			46,057,234			1,105,015
Total Adjusted Capital from DTAs			47,162,249			46,057,234			1,105,015

	December 31, 2010		
	(1)	(2)	(3)
			(Col 1 + 2)
Impact of Tax Planning Strategies	Ordinary Percent	Capital Percent	Total Percent
(a) Adjusted Gross DTAs (% of Total Adjusted Gross DTAs)	0%	0%	0%
(b) Net Admitted Adjusted Gross DTAs (% of Total Net Admitted Gross DTAs)	0%	0%	0%

- B. The Company does not have any DTLs described in SSAP No. 10R, *Income Taxes*, paragraph 6d.
- C. The provisions for incurred taxes on earnings for the years ended December 31 are:

	2010	2009
Federal	175,179	180,120
Foreign	0	0
Realized capital gains	(14,679)	(17,170)
Federal and foreign income taxes incurred	160,500	162,950

The Company's deferred tax assets and liabilities result primarily from goodwill, alternative minimum tax carry forward, accrual of market discount, impairments and deferred intercompany transactions.

The change in deferred income taxes is comprised of the following:

	2010
Change in net deferred income tax (without unrealized gain or loss)	(185,027)
Change in tax effect of unrealized (gains) losses	(44,173)
Total change in net deferred income tax	(229,200)

- D. Effective tax rates differ from the current statutory rate of 35%, principally due to the effects of tax exempt interest and goodwill.
- E. The amount of Federal income taxes incurred and available for recoupment in the event of future losses is \$136,500 from the current year and \$107,573 from the preceding year.

The Company has no remaining net operating loss carry forward available to offset future net income subject to Federal income taxes.

The Company does not have deposits admitted under Section 6603 of the Internal Revenue Services Code.

- F. The Company's Federal income tax return is consolidated with the following entities:

Access Insurance Services, Co.	AMBCO Capital Corporation
America First Insurance Company	America First Lloyds Insurance Company
American Economy Insurance Company	American Fire & Casualty Company
American States Insurance Company	American States Insurance Company of Texas
American States Lloyds Insurance Company	American States Preferred Insurance Company
Avomark Insurance Company (merged 2/23/2010)	Barrier Ridge LLC
Berkeley Holding Company Associates, Inc.	Berkeley Management Corporation
Bridgefield Casualty Insurance Company	Bridgefield Employers Insurance Company
Capitol Court Corporation	Capitol Agency, Inc., The (Arizona corporation)

NOTES TO FINANCIAL STATEMENTS

Capitol Agency, Inc., The (Ohio corporation) Dissolved 11/17/2010	Capitol Agency, Inc., The (Tennessee corporation) (Dissolved 7/1/2010)
Cascade Disability Management, Inc.	Colorado Casualty Insurance Company
Commercial Aviation Insurance, Inc.	Companies Agency of New York, Inc. (Dissolved 3/3/2010)
Companies Agency of Pennsylvania, Inc. (Dissolved 9/9/2010)	Consolidated Insurance Company
Copley Venture Capital, Inc.	Diversified Settlements, Inc.
Emerald City Insurance Agency, Inc.	Employers Insurance Company of Wausau
Excelsior Insurance Company	F.B. Beattie & Co., Inc.
First National Insurance Company of America	First State Agency Inc.
Florida State Agency, Inc. (Dissolved 8/20/2010)	General America Corporation
General America Corporation of Texas	General Insurance Company of America
Golden Eagle Insurance Corporation	Gulf States AIF, Inc.
Hawkeye-Security Insurance Company	Heritage-Summit HealthCare, Inc.
Indiana Insurance Company	Insurance Company of Illinois
LEXCO Limited	Liberty-USA Corporation
Liberty Assignment Corporation	Liberty Energy Canada, Inc.
Liberty Financial Services, Inc.	Liberty Hospitality Group, Inc.
Liberty Insurance Corporation	Liberty Insurance Holdings, Inc.
Liberty Insurance Underwriters Inc.	Liberty International Europe Inc.
Liberty International Holdings Inc.	Liberty Life Assurance Company of Boston
Liberty Life Holdings Inc.	Liberty Lloyds of Texas Insurance Company
Liberty Management Services, Inc.	Liberty Mexico Holdings Inc.
Liberty Mutual Agency Corporation	Liberty Mutual Fire Insurance Company
Liberty Mutual Group Inc.	Liberty Mutual Holding Company Inc.
Liberty Mutual Insurance Company	Liberty Mutual Personal Insurance Company
Liberty Northwest Insurance Corporation	Liberty Personal Insurance Company
Liberty RE (Bermuda) Limited	Liberty Sponsored Insurance (Vermont) Inc.
Liberty Surplus Insurance Corporation	LIH-RE of America Corporation
LIU Specialty Insurance Agency Inc.	LM General Insurance Company
LM Insurance Corporation	LM Personal Insurance Company
LM Property & Casualty Insurance Company	LMHC Massachusetts Holdings Inc.
LRE Properties, Inc.	Mid-American Agency, Inc. (Dissolved 8/20/2010)
Mid-American Fire & Casualty Company	North Pacific Insurance Company
OCASCO Budget, Inc.	OCI Printing, Inc.
Ohio Casualty Corporation	Ohio Security Insurance Company
Open Seas Solutions, Inc.	Oregon Automobile Insurance Company
Peerless Indemnity Insurance Company	Peerless Insurance Company
Pilot Insurance Services, Inc.	Rianoc Research Corporation
S.C. Bellevue, Inc.	SAFECARE Company, Inc.
Safeco Corporation	Safeco General Agency, Inc.
Safeco Insurance Company of America	Safeco Insurance Company of Illinois
Safeco Insurance Company of Indiana	Safeco Insurance Company of Oregon
Safeco Lloyds Insurance Company	Safeco National Insurance Company
Safeco Properties, Inc.	Safeco Surplus Lines Insurance Company
San Diego Insurance Company	SCIT, Inc.
St. James Insurance Company Ltd.	State Agency, Inc. (Indiana corporation) (Dissolved 8/23/2010)
State Agency, Inc. (Wisconsin corporation) (Dissolved 8/24/2010)	Summit Consulting, Inc.
Summit Consulting, Inc. of Louisiana	Summit Holding Southeast, Inc.
The First Liberty Insurance Corporation	The Midwestern Indemnity Company
The Ohio Casualty Insurance Company	The Netherlands Insurance Company
Wausau General Insurance Company	The National Corporation
West American Insurance Company	Wausau Business Insurance Company
Winmar of the Desert, Inc.	Wausau Underwriters Insurance Company
Winmar-Metro, Inc.	Winmar Company, Inc.
	Winmar Oregon, Inc.

The method of federal income tax allocation is subject to a written agreement. Allocation is based upon separate return calculations with credit applied for losses as appropriate. The Company has the enforceable right to recoup prior year payments in the event of future losses.

Note 10 - Information Concerning Parent, Subsidiaries and Affiliates

- A. All of the outstanding shares of capital stock of the Company are held by Liberty Mutual Insurance Company ("LMIC"), a Massachusetts insurance company. The ultimate parent of LMIC is Liberty Mutual Holding Company Inc., a Massachusetts company.
- B. Transactions between the Company and its affiliates are listed on Schedule Y Part 2.
- C. There have been no material transactions with the Company's affiliates during 2010.
- D. At December 31, 2010, the Company reported a net \$31,653 due from affiliates. In general, the terms of the inter-company arrangements require settlement at least quarterly.
- E. The Company has not made any guarantees or initiated any undertakings for the benefit of affiliates which result in a material contingent exposure of the Company's or affiliates' assets or liabilities.

NOTES TO FINANCIAL STATEMENTS

- F. Refer to Note 26 for information regarding the Amended and Restated Reinsurance Pooling Agreement.

The Company is a party to a services agreement (the "Agreement") with Peerless Insurance Company ("PIC") and other affiliates. The Agreement allows PIC to provide services related to common management function including, but not limited to, coordinating marketing and advertising, information systems support, payroll and human resource services, actuarial support, accounting and other financial services, as well as consulting and other services as the parties may request.

The Company is a party to an investment management agreement with Liberty Mutual Group Inc. ("LMGI") and cash management agreements with Liberty Mutual Investment Advisors LLC ("LMIA"). Under these agreements, LMGI and LMIA provide services to the Company.

The Company is a party to a management services agreement with LMIC. Under the agreement, LMIC may provide services related to common management functions including, but not limited to, accounting, financial, tax and auditing, information technology and support, purchasing, payroll and employee benefits, policy administration, real estate management, legal, general administration, as well as consulting and other services as the parties may request.

The Company is party to a Federal Tax Sharing Agreement between LMIC and affiliates (Refer to Note 9F).

- G. The Company is a member of a holding company structure as illustrated in Schedule Y Part 1.
- H. The Company does not own shares of any upstream intermediate or ultimate parent, either directly or indirectly via a downstream subsidiary, controlled or affiliated company.
- I. The Company does not own investments in subsidiary, controlled or affiliated companies that exceed 10% of its admitted assets.
- J. The Company does not own any investments in subsidiary, controlled or affiliated entities.
- K. The Company does not hold any investments in foreign insurance subsidiaries.
- L. The Company does not hold any investments in downstream non-insurance holding companies.

Note 11 - Debt

- A. Debt (Including Capital Notes)

The Company has no debt, including capital notes.

- B. Federal Home Loan Bank Agreements

The Company has not entered into any agreements with the Federal Home Loan Bank.

Note 12 - Retirement Plans, Deferred Compensation, Postemployment Benefits and Compensated Absences and Other Postretirement Benefit Plans

The Company does not have any direct employees and therefore, does not have any direct obligations for a defined benefit plan, deferred compensation arrangements, compensated absences or other post retirement benefit plans. Services for the operation of the Company are provided under provisions of the management services agreements as described in note 10 F.

Note 13 - Capital and Surplus, Shareholders' Dividend Restrictions and Quasi-Reorganizations

1. The Company has 2,500,000 shares authorized, issued and outstanding as of December 31, 2010. All shares have a stated par value of \$1.20.
2. Preferred Stock
Not applicable
3. There are no dividend restrictions.
4. The Company did not pay any dividends to its parent during 2010.
5. The maximum amount of dividends which can be paid by Illinois-domiciled insurance companies to shareholders without the prior approval of the Insurance Director is the greater of (a) 10% of surplus or (b) net income, subject to the availability of accumulated undistributed earnings. The maximum dividend payout which may be made without prior approval in 2011 is \$4,716,225.
6. As of December 31, 2010, the Company has restricted surplus of \$165,553 from recording the increase in admitted adjusted gross DTA's as a result of applying the revised guidance in SSAP No. 10R, *Income Taxes*.
7. The Company had no advances to surplus.
8. The Company does not hold stock for special purposes.
9. The Company had changes in special surplus funds resulting from the increase in admitted adjusted gross Deferred Tax Assets, due to applying the revised guidance in SSAP No. 10R, *Income Taxes*.

NOTES TO FINANCIAL STATEMENTS

10. The portion of unassigned funds (surplus) represented by cumulative net unrealized gains is \$82,035 after applicable deferred taxes of \$1,964.
11. Surplus Notes
Not applicable
12. Quasi re-organization (dollar impact)
Not applicable
13. Quasi re-organization (effective date)
Not applicable

Note 14 - Contingencies

A. Contingent Commitments

The Company has made no commitments, contingent commitments or guarantees on behalf of affiliates, except as indicated in Note 10E.

B. Assessments

The Company is subject to guaranty funds and other assessments by the states in which it writes business. Guaranty fund assessments are accrued at the time of insolvencies. Other assessments are accrued either at the time of assessments or in the case of premium based assessments, at the time the premiums are written, or, in the case of loss based assessments, at the time the losses are incurred.

The Company has no net guaranty fund or other assessment liabilities to report (refer to Note 26).

C. Gain Contingencies

Not applicable

D. Claims related extra contractual obligations and bad faith losses stemming from lawsuits

The Company did not have claims related extra contractual obligation losses or bad faith losses stemming from lawsuits in the current period.

E. All Other Contingencies

Lawsuits arise against the Company in the normal course of business. Contingent liabilities arising from litigation, income taxes, and other matters are not considered material in relation to the financial position of the Company.

As disclosed in Note 9 F, the Company is a member of a controlled group for federal income tax purposes, and that group includes Liberty Mutual Group Inc. ("LMGI"). LMGI is the plan sponsor of the Liberty Mutual Retirement Benefit Plan, a qualified plan under federal law. Pursuant to federal law, if LMGI has not made the minimum required contributions with respect to the Liberty Mutual Retirement Benefit Plan, the Company, jointly and severally with all other members of the controlled group, would be contingently liable to make such contributions.

Note 15 - Leases

A. Lessee Leasing Arrangements

The Company has no net lease obligations (refer to Note 26).

B. Leasing as a Significant Part of Lessor's Business Activities

Leasing is not a significant part of the Company's business activities.

Note 16 - Information About Financial Instruments with Off-Balance Sheet Risk and Financial Instruments with Concentrations of Credit Risk

The Company is not exposed to financial instruments with off-balance sheet risk or concentration of credit risk.

Note 17 - Sale, Transfer and Servicing of Financial Assets and Extinguishments of Liabilities

A. Transfers of Receivables Reported as Sales

The Company did not have any transfers of receivables reported as sales during the year.

B. Transfers and Servicing of Financial Assets

The Company participates in a Securities Lending Program to generate additional income, whereby certain fixed income and mortgage backed securities are loaned for a period of time from the Company's portfolio to qualifying third parties, via a lending agent. The Company does not participate in term loans; therefore, the Company does not have contractual

NOTES TO FINANCIAL STATEMENTS

collateral transactions that extend beyond one year from the reporting date. Borrowers of these securities provide collateral equal to or in excess of 102% of the market value of the loaned securities. Acceptable collateral may be in the form of cash or U.S. Government securities, such as Treasuries and Agency Bonds. Collateral is not restricted and currently \$0 extends beyond one year from December 31, 2010. The market value of the loaned securities is monitored and additional collateral is obtained if the market value of the collateral falls below 102% of the market value of the loaned securities. Additionally, the lending agent indemnifies the Company against borrower defaults. Cash collateral is carried as an asset with an offsetting liability on the balance sheet, as the Company can exercise discretion as to how the collateral is invested. The loaned securities remain a recorded asset of the Company.

At December 31, 2010 the total fair value of securities on loan was \$4,063,300, with corresponding collateral value of \$4,160,451 of which \$0 represents cash collateral.

C. Wash Sales

The Company did not have any wash sale transactions during the year.

Note 18 - Gain or Loss from Uninsured Accident and Health Plans and the Uninsured Portion of Partially Insured Plans

A. Administrative Services Only (ASO) Plans

Not applicable

B. Administrative Services Contract (ASC) Plans

In 2008, certain members of the PIC Amended and Restated Reinsurance Pooling Agreement (refer to Note 26) agreed to become participating insurers of the California Earthquake Authority ("CEA"), a publicly-managed, privately funded organization that provides residential earthquake insurance in California. As participating insurers of the CEA, the companies act as third party administrators and perform certain administrative services on behalf of the CEA, including underwriting, policy issuance, premium collection, and claims payment. The CEA reimburses the companies for commissions and claims paid on behalf of the CEA. The companies also receive an administrative fee equal to 3.43% of premium and 9% of claims paid. These administrative fees are subject to the inter-company pooling agreement. In 2010, the Company recorded net CEA administrative fees of \$0.

C. Medicare or Other Similarly Structured Cost Based Reimbursement Contracts

Not applicable

Note 19 - Direct Premium Written/Produced by Managing General Agents/Third Party Administrators

The Company has no direct premiums written or produced through managing general agents or third party administrators.

Note 20 – Fair Value Measurements

A. Inputs Used for Assets and Liabilities Measured at Fair Value

1. Fair Value Measurements by Levels 1, 2 and 3

Fair value is the price that would be received to sell an asset or would be paid to transfer a liability in an orderly transaction between market participants at the measurement date. In determining fair value, the Company primarily uses the market approach which generally utilizes market transaction data for identical or similar instruments.

The hierarchy level assigned to each security in the Company's portfolio is based on the Company's assessment of the transparency and reliability of the inputs used in the valuation of each instrument at the measurement date. The highest priority is given to Level 1 measurements and the lowest priority to Level 3 measurements. Securities are classified based on the lowest level of input that is significant to the fair value measurement. The Company recognizes transfers between levels at the end of each reporting period. The three hierarchy levels are defined as follows:

- Level 1 — Valuations based on unadjusted observable quoted market prices in active markets for identical assets or liabilities that the Company has the ability to access at the measurement date.
- Level 2 — Valuations based on directly or indirectly observable inputs (other than Level 1 prices) at the measurement date, such as quoted prices in active markets or prices in markets that are not active for similar assets or liabilities or other inputs that are observable.
- Level 3 — Valuations based on inputs that are unobservable and reflect the Company's own assumptions about the assumptions that market participants might use.

The following table summarizes the Company's assets and liabilities that are measured at fair value at December 31, 2010:

1	2	3	4	5
Description	Level 1	Level 2	Level 3	Total
Assets at fair value				
Bonds				
Industrial and Miscellaneous		\$76,689		\$76,689
Total Bonds		76,689		76,689

NOTES TO FINANCIAL STATEMENTS

Preferred Stocks	-	-	-	-
Common Stocks	-	-	-	-
Total assets at fair value	\$0	\$76,689	\$0	\$76,689
Liabilities at fair value				
Total liabilities at fair value	\$0	\$0	\$0	\$0

The Company did not have significant transfers between Levels 1 and 2 during the year ended December 31, 2010.

2. Rollforward of Level 3 Items

The Company has no assets or liabilities measured at fair value in the Level 3 category.

3. Policy on Transfers Into and Out of Level 3

Transfers in and/or out of Level 3 are due to re-evaluation of the observability of pricing inputs.

4. Inputs and Techniques Used for Fair Value

Fixed Maturities

At each valuation date, the Company uses various valuation techniques to estimate the fair value of its fixed maturities portfolio. The primary method for valuing the Company's securities is through independent third-party valuation service providers. For positions where valuations are not available from independent third-party valuation service providers, the Company utilizes broker quotes and internal pricing methods to determine fair values. The Company obtains a single non-binding price quote from a broker familiar with the security who, similar to the Company's valuation service providers, may consider transactions or activity in similar securities, as applicable, among other information. The brokers providing price quotes are generally from the brokerage divisions of leading financial institutions with market making, underwriting and distribution expertise regarding the security subject to valuation. The evaluation and prioritization of these valuation sources is systematic and predetermined resulting in a single quote or price for each financial instrument. The following describes the techniques generally used to determine the fair value of the Company's fixed maturities by asset class:

U.S. government and agency

U.S. government and agency securities consist primarily of bonds issued by the U.S. Treasury and mortgage pass-through agencies such as the Federal Home Loan Bank, the Federal National Mortgage Association and the Federal Home Loan Mortgage Corporation. As the fair values of the Company's U.S. Treasury securities are based on unadjusted market prices, they are classified within Level 1. The fair value of U.S. government agency securities is generally determined using observable market inputs that include quoted prices for identical or similar assets in markets that are not active, benchmark yields, reported trades, bids, offers and credit spreads. Accordingly, the fair value of U.S. government agency securities is classified within Level 2.

Mortgage-Backed Securities

The Company's portfolio of residential mortgage-backed securities ("MBS") and commercial MBS are originated by both agencies and non-agencies, the majority of which are pass-through securities issued by U.S. government agencies. The fair value of MBS is generally determined using observable market inputs that include quoted prices for identical or similar assets in markets that are not active, benchmark yields, contractual cash flows, prepayment speeds, collateral performance and credit spreads. Accordingly, the fair value of MBS is primarily classified within Level 2.

Asset-Backed Securities

Asset-backed securities ("ABS") include mostly investment-grade bonds backed by pools of loans with a variety of underlying collateral, including automobile loan receivables, credit card receivables, and collateralized loan obligation securities originated by a variety of financial institutions. The fair value of ABS is generally determined using observable market inputs that include quoted prices for identical or similar assets in markets that are not active, benchmark yields, contractual cash flows, prepayment speeds, collateral performance and credit spreads. Accordingly, the fair value of ABS is primarily classified within Level 2.

Municipals

The Company's municipal portfolio comprises bonds issued by U.S. domiciled state and municipal entities. The fair value of municipal securities is generally determined using observable market inputs that include quoted prices for identical or similar assets in markets that are not active, benchmark yields, broker quotes, issuer ratings, reported trades and credit spreads. Accordingly, the fair value of municipal securities is primarily classified within Level 2.

Corporate debt and other

Corporate debt securities consist primarily of investment-grade debt of a wide variety of corporate issuers and industries. The fair value of corporate and other securities is generally determined using observable market inputs that include quoted prices for identical or similar assets in markets that are not active, benchmark yields, new issuances, issuer ratings, reported trades of identical or comparable securities, bids, offers and credit spreads. Accordingly, the fair value of corporate and other securities is primarily classified within Level 2. In the event third-party vendor valuation is not available, prices are determined using non-binding price quotes from a broker familiar with the security. In this instance, the valuation inputs are generally unobservable and the fair value is classified within Level 3.

NOTES TO FINANCIAL STATEMENTS

Foreign government securities

Foreign government securities comprise bonds issued by foreign governments and their agencies along with supranational organizations. The fair value of foreign government securities is generally determined using observable market inputs that include quoted prices for identical or similar assets in markets that are not active, benchmark yields, broker quotes, issuer ratings, reported trades of identical or comparable securities and credit spreads. Accordingly, the fair value of foreign government securities is primarily classified within Level 2.

Equity Securities

Equity securities include common and preferred stocks. Common stocks with fair values based on quoted market prices in active markets are classified in Level 1. Common stocks with fair values determined using observable market inputs that include quoted prices for identical or similar assets in markets that are not active are classified in Level 2. The fair value of preferred stock is generally determined using observable market inputs that include quoted prices for identical or similar assets in markets that are not active. Accordingly, the fair value of preferred stock is primarily classified within Level 2.

Other Investments

Other investments include primarily international loans, foreign cash deposits and equity investments in privately held businesses. International loans and cash deposits are primarily valued using quoted prices for similar instruments in active markets; these assets are categorized as Level 2 of the fair value hierarchy. Equity investments in privately held businesses are valued using internal management estimates; they are categorized as Level 3 of the hierarchy. Limited partnership investments, which represent the remainder of the other investment balance on the consolidated balance sheet, are not subject to these disclosures and therefore are excluded from the above table.

5. Derivative Fair Values

Not applicable

B. This Disclosure was removed by NAIC December 2010.

C. Other Fair Value Disclosures

Not applicable

D. Reasons Not Practical to Estimate Fair Value

Not applicable

Note 21 - Other Items

A. Extraordinary Items

The Company has no extraordinary items to report.

B. Troubled Debt Restructuring: Debtors

Not applicable

C. Other Disclosures

1) Assets in the amount of \$4,911,698 and \$4,960,895 as of December 31, 2010 and 2009, respectively, were on deposit with government authorities or trustees as required by law.

2) Interrogatory 6.1

In 2010, the Company ceded 100% of its business to PIC and had the benefit, together with its affiliates that cede business to PIC or that are members of the inter-company reinsurance pool of which PIC is the lead company, of Workers' Compensation Catastrophe reinsurance with limits of \$110,000,000 part of \$200,000,000 xs \$100,000,000 purchased by PIC and covering PIC's direct and assumed from affiliates workers' compensation business.

Interrogatory 6.3

In 2010, the Company ceded 100% of its business to PIC and had the benefit, together with its affiliates that cede business to PIC or that are members of the inter-company reinsurance pool of which PIC is the lead company, of traditional property catastrophe XOL reinsurance with limits of \$742,500,000 part of \$825,000,000 xs \$500,000,000 purchased by PIC and covering PIC's direct and assumed from affiliates property business.

D. The Company has no net exposure to uncollectible premium receivable balances (refer to Note 26).

E. Business Interruption Insurance Recoveries

The Company does not purchase business interruption coverage.

NOTES TO FINANCIAL STATEMENTS

F. State Transferable Tax Credits

The Company does not hold state transferable tax credits.

G. Subprime-Mortgage-Related Risk Exposure

1. The Company has not purchased securities characterized by the market as subprime. The Company reviews such factors as average FICO scores, loan to value ratios, and levels of documentation when evaluating securities. The Company's only exposure to subprime was inherited through past acquisitions of insurance companies.
2. The Company does not have any direct exposure through investments in sub-prime mortgage loans.
3. The Company has direct exposure through investments in residential mortgage-backed securities.

<u>Actual Cost</u>	<u>Book Adjusted Carrying Value</u>	<u>Fair Value</u>	<u>Other Than Temporary Impairments Recognized</u>
\$53,637	\$51,308	\$45,364	\$12,707

4. The Company does not have any underwriting exposure to sub-prime mortgage risk.

Note 22 - Events Subsequent

- A. The Company evaluated subsequent events through February 24, 2011, the date the financial statements were available to be issued.

There were no events subsequent to December 31, 2010 that would require disclosure.

Note 23 - Reinsurance

A. Unsecured Reinsurance Recoverable

Excluding amounts arising pursuant to the Intercompany Reinsurance Agreement, as described in Note 26, there are no unsecured reinsurance recoverables with an individual reinsurer which exceed 3% of policyholder's surplus.

B. Reinsurance Recoverable in Dispute

There are no reinsurance recoverables in dispute from an individual reinsurer which exceeds 5% of the Company's surplus. In addition, the aggregate reinsurance recoverables in dispute do not exceed 10% of the Company's surplus.

C. Reinsurance Assumed & Ceded

1. The following table sets forth the maximum return premium and commission equity due the reinsurers or the Company if all of the Company's assumed and ceded reinsurance were canceled as of December 31, 2010.

	Assumed Reinsurance		Ceded Reinsurance		Net Reinsurance	
	UEP	Commission Equity	UEP	Commission Equity	UEP	Commission Equity
Affiliates	\$ 0	\$ 0	\$ 145,872	\$ 21,881	\$ (145,872)	\$ (21,881)
All Other	0	0	0	0	0	0
Total	\$ 0	\$ 0	\$ 145,872	\$ 21,881	\$ (145,872)	\$ (21,881)

Direct Unearned Premium Reserve: \$ 145,872

2. The Company has no contingent commissions, sliding scale, or other profit sharing commissions for direct, assumed or ceded business.
3. The Company does not use protected cells as an alternative to traditional reinsurance.

D. Uncollectible Reinsurance

The Company did not write off any uncollectible balances in the current year.

E. Commutation of Ceded Reinsurance

The Company did not commute any reinsurance treaties in the current year.

F. Retroactive Reinsurance

The Company does not have any retroactive reinsurance agreements.

G. Reinsurance Accounted for as a Deposit

The Company has not entered into any reinsurance agreements that have been accounted for as deposits as of December 31, 2010.

NOTES TO FINANCIAL STATEMENTS

H. Disclosures for the Transfer of Property and Casualty Run-off Agreements

The Company has not entered into any property and casualty run-off agreements which qualify for prospective reinsurance accounting treatment, pursuant to SSAP No. 62R, *Property and Casualty Reinsurance*.

Note 24 - Retrospectively Rated Contracts and Contracts Subject to Redetermination

The Company does not have net accrued retrospective premiums (refer to Note 26).

Note 25 - Changes in Incurred Losses and Loss Adjustment Expenses

The Company has no net exposure to changes in incurred losses and loss adjustment expenses (refer to Note 26).

Note 26 - Intercompany Pooling Arrangements

The Company is a member of the PIC Amended and Restated Reinsurance Pooling Agreement consisting of the following affiliated companies:

		NAIC Company Number	Pooling Percentage	Line of Business
Lead Company:	Peerless Insurance Company ("PIC")	24198	25.20%	All Lines
Affiliated Pool Companies:	The Ohio Casualty Insurance Company ("OCIC")	24074	20.40%	All Lines
	Safeco Insurance Company of America ("SICOA")	24740	15.20%	All Lines
	General Insurance Company of America ("GICA")	24732	9.20%	All Lines
	American States Insurance Company ("ASIC")	19704	7.60%	All Lines
	American Economy Insurance Company ("AEIC")	19690	5.60%	All Lines
	Indiana Insurance Company ("IIC")	22659	4.80%	All Lines
	Golden Eagle Insurance Corporation ("GEIC")	10836	3.00%	All Lines
	Peerless Indemnity Insurance Company ("PIIC")	18333	3.00%	All Lines
	Safeco Insurance Company of Illinois ("SICIL")	39012	2.00%	All Lines
	The Netherlands Insurance Company ("NIC")	24171	1.80%	All Lines
	American States Preferred Insurance Company ("ASPCO")	37214	0.80%	All Lines
	First National Insurance Company of America ("FNICA")	24724	0.80%	All Lines
	American Fire and Casualty Company ("AFCIC")	24066	0.60%	All Lines
	America First Insurance Company ("AFIC")	12696	0.00%	All Lines
	America First Lloyd's Insurance Company ("AFLIC")	11526	0.00%	All Lines
	American States Insurance Company of Texas ("ASICT")	19712	0.00%	All Lines
	American States Lloyds Insurance Company ("ASLCO")	31933	0.00%	All Lines
	Colorado Casualty Insurance Company ("CCIC")	41785	0.00%	All Lines
	Consolidated Insurance Company ("CIC")	22640	0.00%	All Lines
	Excelsior Insurance Company ("EIC")	11045	0.00%	All Lines
	Hawkeye-Security Insurance Company ("HSIC")	36919	0.00%	All Lines
	Mid-American Fire & Casualty Company ("MAFCC")	23507	0.00%	All Lines
	The Midwestern Indemnity Company ("MWIC")	23515	0.00%	All Lines
	Montgomery Mutual Insurance Company ("MMIC")	14613	0.00%	All Lines
	National Insurance Association ("NIA")	27944	0.00%	All Lines
	Ohio Security Insurance Company ("OSIC")	24082	0.00%	All Lines
	Safeco Insurance Company of Indiana ("SICIN")	11215	0.00%	All Lines
	Safeco Insurance Company of Oregon ("SICOR")	11071	0.00%	All Lines
	Safeco Lloyds Insurance Company ("SLICO")	11070	0.00%	All Lines
	Safeco National Insurance Company ("SNIC")	24759	0.00%	All Lines
	Safeco Surplus Lines Insurance Company ("SSLIC")	11100	0.00%	All Lines
	West American Insurance Company ("WAIC")	44393	0.00%	All Lines
			100.0%	
100% Quota Share Affiliated Companies:	Liberty Northwest Insurance Corporation ("LNW")	41939	0.00%	All Lines
	North Pacific Insurance Company ("NPIC")	23892	0.00%	All Lines
	Oregon Automobile Insurance Company ("OAIC")	23922	0.00%	All Lines
	Liberty Mutual Mid-Atlantic Insurance Company ("LMMAIC")	14486	0.00%	All Lines

Under the terms of the Reinsurance Agreements, the sequence of transactions is as follows:

- (a) Each Affiliated Pool Company cedes its net underwriting activity to the Lead Company. Each 100% Quota Share Affiliated Company cedes its net underwriting activity to the Lead Company.
- (b) After recording the assumed affiliate transactions noted above, the Lead Company records 100% of its external assumed and ceded reinsurance activity.

NOTES TO FINANCIAL STATEMENTS

- (c) The Lead Company's remaining underwriting activity, after processing all internal and external reinsurance is retroceded to the pool members in accordance with each company's pool participation percentage, as noted above.
- (d) There were no members that are parties to reinsurance agreements with non-affiliated reinsurers covering business subject to the pooling agreement that have a contractual right of direct recovery from the non-affiliated reinsurer per the terms of such reinsurance agreements.
- (e) There were no discrepancies between entries regarding pooled business on the assumed and ceded reinsurance schedules of the Lead Company and corresponding entries on the assumed and ceded reinsurance schedules of other pooled participants.
- (f) The write-off of uncollectible reinsurance is pooled and the Provision for Reinsurance is recognized by the entity placing the outbound external reinsurance
- (g) Amounts due (to)/from affiliated entities participating in the PIC Amended and Restated Reinsurance Pooling Agreement as at December 31, 2010:

Affiliate:	Amount:
Peerless Insurance Company	(24,025,293)
The Netherlands Insurance Company	(2,042,444)
Indiana Insurance Company	(5,446,518)
Peerless Indemnity Insurance Company	(3,404,074)
Ohio Casualty Insurance Company	(20,160,168)
Ohio Security Insurance Company	972,506
West America Insurance Company	(1,234,734)
American Fire and Casualty Insurance Company	(1,083,517)
Golden Eagle Insurance Corporation	(3,404,074)
American Economy Insurance Company	251,450
American States Insurance Company	(14,046,151)
American States Insurance Company of Texas	(318,718)
American States Lloyds Insurance Company	(3,029)
American States Preferred Insurance Company	1,378,282
First National Insurance Company	4,977,377
General Insurance Company of America	(9,795,724)
Safeco Insurance Company of America	23,738,540
Safeco Insurance Company of Illinois	38,606,218
Safeco Insurance Company of Indiana	5,927,201
Safeco Insurance Company of Oregon	7,829,541
Safeco Lloyds Insurance Company	1,513,595
Safeco National Insurance Company	69,388
Safeco Surplus Insurance Company	(60,938)

Effective January 1, 2010, the LMMAIC cancelled its participation in the Peerless Insurance Company ("PIC") Amended and Restated Reinsurance Pooling Agreement and concurrently became a participant in the Liberty Mutual Inter-Company Reinsurance Agreement with a 0.0% pool participation percentage and entered into an 100% Quota Share Reinsurance Agreement with PIC. Pursuant to the 100% Quota Share Reinsurance Agreement with PIC, the Company continues to cede the business it wrote for the Peerless Pool to PIC. New business is ceded to Liberty Mutual Insurance Company ("LMIC"), the lead company in the Liberty Pool.

Effective January 1, 2010, BCIC and BEIC novated their 100% Quota Share Reinsurance Agreements with PIC and entered into 100% Quota Share Inter-Company Reinsurance Agreements with LMIC.

Effective February 23, 2010, Avomark Insurance Company merged with WAIC. WAIC was the surviving entity.

Note 27 - Structured Settlements

- A. The Company has no net exposure to contingent liabilities from the purchase of annuities (refer to Note 26).
- B. Not applicable

Note 28 - Health Care Receivables

Not applicable

Note 29 - Participating Policies

Not applicable

Note 30 - Premium Deficiency Reserves

1. Liability carried for premium deficiency reserves	\$0
2. Date of the most recent evaluation of this liability	12/31/2010
3. Was anticipated investment income utilized in the calculation?	Yes

NOTES TO FINANCIAL STATEMENTS

Note 31 - High Dollar Deductible Policies

The Company does not have any high deductible policies.

Note 32 - Discounting of Liabilities for Unpaid Losses and Unpaid Loss Adjustment Expenses

The Company has no net loss and loss adjustment expense reserves (refer to Note 26).

Note 33 - Asbestos/Environmental Reserves

The Company has no net exposure to asbestos and environmental claims (refer to Note 26).

Note 34 - Subscriber Savings Accounts

The Company is not a reciprocal insurance company.

Note 35 - Multiple Peril Crop Insurance

Not applicable

Note 36 - Financial Guarantee Insurance

Not applicable

GENERAL INTERROGATORIES

PART 1 – COMMON INTERROGATORIES

GENERAL

- 1.1 Is the reporting entity a member of an Insurance Holding Company System consisting of two or more affiliated persons, one or more of which is an insurer? Yes No
- 1.2 If yes, did the reporting entity register and file with its domiciliary State Insurance Commissioner, Director or Superintendent or with such regulatory official of the state of domicile of the principal insurer in the Holding Company System, a registration statement providing disclosure substantially similar to the standards adopted by the National Association of Insurance Commissioners (NAIC) in its Model Insurance Holding Company System Regulatory Act and model regulations pertaining thereto, or is the reporting entity subject to standards and disclosure requirements substantially similar to those required by such Act and regulations? Yes No N/A
- 1.3 State Regulating? _____ Illinois _____
- 2.1 Has any change been made during the year of this statement in the charter, by-laws, articles of incorporation, or deed of settlement of the reporting entity? Yes No
- 2.2 If yes, date of change: _____
- 3.1 State as of what date the latest financial examination of the reporting entity was made or is being made. _____ 12/31/2009 _____
- 3.2 State the as of date that the latest financial examination report became available from either the state of domicile or the reporting entity. This date should be the date of the examined balance sheet and not the date the report was completed or released. _____ 12/31/2005 _____
- 3.3 State as of what date the latest financial examination report became available to other states or the public from either the state of domicile or the reporting entity. This is the release date or completion date of the examination report and not the date of the examination (balance sheet date). _____ 07/05/2007 _____
- 3.4 By what department or departments?
 Illinois Department of Financial and Professional Regulation Division of Insurance

- 3.5 Have all financial statement adjustments within the latest financial examination report been accounted for in a subsequent financial statement filed with departments? Yes No N/A
- 3.6 Have all of the recommendations within the latest financial examination report been complied with? Yes No N/A
- 4.1 During the period covered by this statement, did any agent, broker, sales representative, non-affiliated sales/service organization or any combination thereof under common control (other than salaried employees of the reporting entity) receive credit or commissions for or control a substantial part (more than 20 percent of any major line of business measured on direct premiums) of:
- 4.11 sales of new business? Yes No
- 4.12 renewals? Yes No
- 4.2 During the period covered by this statement, did any sales/service organization owned in whole or in part by the reporting entity or an affiliate, receive credit or commissions for or control a substantial part (more than 20 percent of any major line of business measured on direct premiums) of:
- 4.21 sales of new business? Yes No
- 4.22 renewals? Yes No
- 5.1 Has the reporting entity been a party to a merger or consolidation during the period covered by this statement? Yes No
- 5.2 If yes, provide the name of the entity, NAIC Company Code, and state of domicile (use two letter state abbreviation) for any entity that has ceased to exist as a result of the merger or consolidation.

1 Name of Entity	2 NAIC Company Code	3 State of Domicile
.....	00000
.....	00000
.....	00000

- 6.1 Has the reporting entity had any Certificates of Authority, licenses or registrations (including corporate registration, if applicable) suspended or revoked by any governmental entity during the reporting period? Yes No

GENERAL INTERROGATORIES

6.2 If yes, give full information:

.....

7.1 Does any foreign (non-United States) person or entity directly or indirectly control 10% or more of the reporting entity? Yes [] No [X]

7.2 If yes,

- 7.21 State the percentage of foreign control. _____ %
- 7.22 State the nationality(s) of the foreign person(s) or entity(s); or if the entity is a mutual or reciprocal, the nationality of its manager or attorney-in-fact and identify the type of entity(s) (e.g., individual, corporation, government, manager or attorney-in-fact).

1 Nationality	2 Type of Entity
.....

8.1 Is the company a subsidiary of a bank holding company regulated by the Federal Reserve Board? Yes [] No [X]

8.2 If response to 8.1 is yes, please identify the name of the bank holding company.

.....

8.3 Is the company affiliated with one or more banks, thrifts or securities firms? Yes [] No [X]

8.4 If response to 8.3 is yes, please provide the names and locations (city and state of the main office) of any affiliates regulated by a federal financial regulatory services agency [i.e., the Federal Reserve Board (FRB), the Office of the Comptroller of the Currency (OCC), the Office of Thrift Supervision (OTS), the Federal Deposit Insurance Corporation (FDIC) and the Securities Exchange Commission (SEC)] and identify the affiliate's primary federal regulator.

1 Affiliate Name	2 Location (City, State)	3 FRB	4 OCC	5 OTS	6 FDIC	7 SEC
.....

9. What is the name and address of the independent certified public accountant or accounting firm retained to conduct the annual audit?

Ernst & Young, LLP
 200 Clarendon Street
 Boston, MA 02116

10.1 Has the insurer been granted any exemptions to the prohibited non-audit services provided by the certified independent public accountant requirements as allowed in Section 7H of the Annual Financial Reporting Model Regulation (Model Audit Rule), or substantially similar state law or regulation? Yes [] No [X]

10.2 If response to 10.1 is "yes," provide information related to this exemption:

.....

10.3 Has the insurer been granted any exemptions to the audit committee requirements as allowed in Section 14H of the Annual Financial Reporting Model Regulation, or substantially similar state law or regulation? Yes [] No [X]

10.4 If response to 10.3 is "yes," provide information related to this exemption:

.....

GENERAL INTERROGATORIES

10.5 Has the insurer been granted any exemptions related to the other requirements of the Annual Financial Reporting Model Regulation as allowed in Section 17A of the Model Regulation, or substantially similar state law or regulation? Yes [] No [X]

10.6 If response to 10.5 is "yes," provide information related to this exemption:

10.7 Has the reporting entity established an Audit Committee in compliance with the domiciliary state insurance law? Yes [X] No [] N/A []

10.8 If the response to 10.7 is no or n/a, please explain:

11. What is the name, address and affiliation (officer/employee of the reporting entity or actuary/consultant associated with an actuarial consulting firm) of the individual providing the statement of actuarial opinion/certification?
 William Finn
 175 Berkeley Street, Boston, MA 02116
 Officer of Liberty Mutual Group Inc.

12.1 Does the reporting entity own any securities of a real estate holding company or otherwise hold real estate indirectly? Yes [] No [X]

12.11 Name of real estate holding company	
12.12 Number of parcels involved	0
12.13 Total book/adjusted carrying value	\$ 0

12.2 If yes, provide explanation:

13. FOR UNITED STATES BRANCHES OF ALIEN REPORTING ENTITIES ONLY:

13.1 What changes have been made during the year in the United States manager or the United States trustees of the reporting entity?

13.2 Does this statement contain all business transacted for the reporting entity through its United States Branch on risks wherever located? Yes [] No [X]

13.3 Have there been any changes made to any of the trust indentures during the year? Yes [] No [X]

13.4 If answer to (13.3) is yes, has the domiciliary or entry state approved the changes? Yes [] No [] N/A [X]

14.1 Are the senior officers (principal executive officer, principal financial officer, principal accounting officer or controller, or persons performing similar functions) of the reporting entity subject to a code of ethics, which includes the following standards?
 a. Honest and ethical conduct, including the ethical handling of actual or apparent conflicts of interest between personal and professional relationships;
 b. Full, fair, accurate, timely and understandable disclosure in the periodic reports required to be filed by the reporting entity;
 c. Compliance with applicable governmental laws, rules, and regulations;
 d. The prompt internal reporting of violations to an appropriate person or persons identified in the code; and
 e. Accountability for adherence to the code. Yes [X] No []

14.11 If the response to 14.1 is no, please explain:

GENERAL INTERROGATORIES

- 14.2 Has the code of ethics for senior managers been amended? Yes No
- 14.21 If the response to 14.2 is yes, provide information related to amendment(s).
 During the 1st quarter, Liberty Mutual Group published several non-material changes to its Code of Business Ethics and Conduct designed to clarify existing Code provisions.

- 14.3 Have any provisions of the code of ethics been waived for any of the specified officers? Yes No
- 14.31 If the response to 14.3 is yes, provide the nature of any waiver(s).

BOARD OF DIRECTORS

15. Is the purchase or sale of all investments of the reporting entity passed upon either by the board of directors or a subordinate committee thereof? Yes No
16. Does the reporting entity keep a complete permanent record of the proceedings of its board of directors and all subordinate committees thereof? Yes No
17. Has the reporting entity an established procedure for disclosure to its board of directors or trustees of any material interest or affiliation on the part of any of its officers, directors, trustees or responsible employees that is in conflict or is likely to conflict with the official duties of such person? Yes No

FINANCIAL

18. Has this statement been prepared using a basis of accounting other than Statutory Accounting Principles (e.g., Generally Accepted Accounting Principles)? Yes No
- 19.1 Total amount loaned during the year (inclusive of Separate Accounts, exclusive of policy loans):
- | | | | |
|--|---|----|---|
| | 19.11 To directors or other officers | \$ | 0 |
| | 19.12 To stockholders not officers | \$ | 0 |
| | 19.13 Trustees, supreme or grand (Fraternal only) | \$ | 0 |
- 19.2 Total amount of loans outstanding at the end of year (inclusive of Separate Accounts, exclusive of policy loans):
- | | | | |
|--|---|----|---|
| | 19.21 To directors or other officers | \$ | 0 |
| | 19.22 To stockholders not officers | \$ | 0 |
| | 19.23 Trustees, supreme or grand (Fraternal only) | \$ | 0 |
- 20.1 Were any assets reported in this statement subject to a contractual obligation to transfer to another party without the liability for such obligation being reported in the statement? Yes No
- 20.2 If yes, state the amount thereof at December 31 of the current year:
- | | | | |
|--|----------------------------|----|---|
| | 20.21 Rented from others | \$ | 0 |
| | 20.22 Borrowed from others | \$ | 0 |
| | 20.23 Leased from others | \$ | 0 |
| | 20.24 Other | \$ | 0 |
- 21.1 Does this statement include payments for assessments as described in the Annual Statement Instructions other than guaranty fund or guaranty association assessments? Yes No
- 21.2 If answer is yes:
- | | | | |
|--|--|----|---|
| | 21.21 Amount paid as losses or risk adjustment | \$ | 0 |
| | 21.22 Amount paid as expenses | \$ | 0 |
| | 21.23 Other amounts paid | \$ | 0 |
- 22.1 Does the reporting entity report any amounts due from parent, subsidiaries or affiliates on Page 2 of this statement? Yes No
- 22.2 If yes, indicate any amounts receivable from parent included in the Page 2 amount: \$ 0

GENERAL INTERROGATORIES

INVESTMENT

- 23.1 Were all the stocks, bonds and other securities owned December 31 of current year, over which the reporting entity has exclusive control, in the actual possession of the reporting entity on said date? (other than securities lending programs addressed in 23.3) Yes No
- 23.2 If no, give full and complete information relating thereto:

- 23.3 For security lending programs, provide a description of the program including value for collateral and amount of loaned securities, and whether collateral is carried on or off-balance sheet. (an alternative is to reference Note 17 where this information is also provided)
 Please reference Note 17B

- 23.4 Does the company's security lending program meet the requirements for a conforming program as outlined in the Risk-Based Capital Instructions? Yes No N/A
- 23.5 If answer to 23.4 is yes, report amount of collateral for conforming programs. \$ 4,160,451
- 23.6 If answer to 23.4 is no, report amount of collateral for other programs. \$ 0
- 23.7 Does your securities lending program require 102% (domestic securities) and 105% (foreign securities) from the counterparty at the outset of the contract? Yes No N/A
- 23.8 Does the reporting entity non-admit when the collateral received from the counterparty falls below 100%? Yes No N/A
- 23.9 Does the reporting entity or the reporting entity's securities lending agent utilize the Master Securities lending Agreement (MLSA) to conduct securities lending? Yes No N/A
- 24.1 Were any of the stocks, bonds or other assets of the reporting entity owned at December 31 of the current year not exclusively under the control of the reporting entity or has the reporting entity sold or transferred any assets subject to a put option contract that is currently in force? (Exclude securities subject to Interrogatory 20.1 and 23.3) Yes No
- 24.2 If yes, state the amount thereof at December 31 of the current year:
- | | | | |
|--|-------|--|---------------------|
| | 24.21 | Subject to repurchase agreements | \$ <u>0</u> |
| | 24.22 | Subject to reverse repurchase agreements | \$ <u>0</u> |
| | 24.23 | Subject to dollar repurchase agreements | \$ <u>0</u> |
| | 24.24 | Subject to reverse dollar repurchase agreements | \$ <u>0</u> |
| | 24.25 | Pledged as collateral | \$ <u>0</u> |
| | 24.26 | Placed under option agreements | \$ <u>0</u> |
| | 24.27 | Letter stock or securities restricted as to sale | \$ <u>0</u> |
| | 24.28 | On deposit with state or other regulatory body | \$ <u>4,911,698</u> |
| | 24.29 | Other | \$ <u>0</u> |
- 24.3 For category (24.27) provide the following:
- | 1
Nature of Restriction | 2
Description | 3
Amount |
|----------------------------|------------------|-------------|
| | | 0 |
| | | 0 |
| | | 0 |
- 25.1 Does the reporting entity have any hedging transactions reported on Schedule DB? Yes No
- 25.2 If yes, has a comprehensive description of the hedging program been made available to the domiciliary state? If no, attach a description with this statement. Yes No N/A
- 26.1 Were any preferred stocks or bonds owned as of December 31 of the current year mandatorily convertible into equity, or, at the option of the issuer, convertible into equity? Yes No
- 26.2 If yes, state the amount thereof at December 31 of the current year. \$ 0

GENERAL INTERROGATORIES

27. Excluding items in Schedule E-Part 3-Special Deposits, real estate, mortgage loans and investments held physically in the reporting entity's offices, vaults or safety deposit boxes, were all stocks, bonds and other securities, owned throughout the current year held pursuant to a custodial agreement with a qualified bank or trust company in accordance with Section 1, III General Examination Considerations, F. Outsourcing of Critical Functions, Custodial or Safekeeping Agreements of the NAIC Financial Condition Examiners Handbook?

Yes No

27.01 For agreements that comply with the requirements of the NAIC Financial Condition Examiners Handbook, complete the following:

1 Name of Custodian(s)	2 Custodian's Address
JP Morgan Chase	1 Chase Manhattan Plaza, New York, NY 10005

27.02 For all agreements that do not comply with the requirements of the NAIC Financial Condition Examiners Handbook, provide the name, location and a complete explanation:

1 Name(s)	2 Location(s)	3 Complete Explanation(s)

27.03 Have there been any changes, including name changes, in the custodian(s) identified in 27.01 during the current year?

Yes No

27.04 If yes, give full and complete information relating thereto:

1 Old Custodian	2 New Custodian	3 Date of Change	4 Reason

27.05 Identify all investment advisors, broker/dealers or individuals acting on behalf of broker/dealers that have access to the investment accounts, handle securities and have authority to make investments on behalf of the reporting entity:

1 Central Registration Depository Number(s)	2 Name(s)	3 Address
N/A	Liberty Mutual Group Inc.	175 Berkeley Street, Boston, MA 02116
N/A	Liberty Mutual Investment Advisors, LLC	175 Berkeley Street, Boston, MA 02116

28.1 Does the reporting entity have any diversified mutual funds reported in Schedule D – Part 2 (diversified according to the Securities and Exchange Commission (SEC) in the Investment Company Act of 1940 [Section 5 (b) (1)])?

Yes No

28.2 If yes, complete the following schedule:

1 CUSIP #	2 Name of Mutual Fund	3 Book/Adjusted Carrying Value
		0
		0
		0
28.2999 TOTAL		0

28.3 For each mutual fund listed in the table above, complete the following schedule:

1 Name of Mutual Fund (from above table)	2 Name of Significant Holding of the Mutual Fund	3 Amount of Mutual Fund's Book/Adjusted Carrying Value Attributable to the Holding	4 Date of Valuation
		0	
		0	
		0	

GENERAL INTERROGATORIES

29. Provide the following information for all short-term and long-term bonds and all preferred stocks. Do not substitute amortized value or statement value for fair value.

	1 Statement (Admitted) Value	2 Fair Value	3 Excess of Statement over Fair Value (-), or Fair Value over Statement (+)
29.1 Bonds	47,604,123	48,864,331	1,260,208
29.2 Preferred stocks	0	0	0
29.3 Totals	47,604,123	48,864,331	1,260,208

29.4 Describe the sources or methods utilized in determining the fair values:

The primary source is published unit prices from the NAIC Securities Valuation Office. The secondary source is the pricing vendor, Interactive Data Corporation, followed by backfill from Bloomberg and Markit. Lastly, management determines fair value based on quoted market prices of similar financial instruments or by using industry recognized valuation techniques.

30.1 Was the rate used to calculate fair value determined by a broker or custodian for any of the securities in Schedule D? Yes [] No [X]

30.2 If the answer to 30.1 is yes, does the reporting entity have a copy of the broker's or custodian's pricing policy (hard copy or electronic copy) for all brokers or custodians used as a pricing source? Yes [] No [X]

30.3 If the answer to 30.2 is no, describe the reporting entity's process for determining a reliable pricing source for purposes of disclosure of fair value for Schedule D:

The Company reviews the pricing methodology of its vendors on an annual basis. The company has also established acceptable price change and tolerance guidelines. Vendor prices falling outside the guidelines are further reviewed by management on a monthly basis. All prices determined internally by the insurer are reviewed and signed off by the Chief Investment Officer.

31.1 Have all the filing requirements of the Purposes and Procedures Manual of the NAIC Securities Valuation Office been followed? Yes [] No [X]

31.2 If no, list exceptions:

OTHER

32.1 Amount of payments to Trade associations, service organizations and statistical or Rating Bureaus, if any? \$ _____ 0

32.2 List the name of the organization and the amount paid if any such payment represented 25% or more of the total payments to trade associations, service organizations and statistical or rating bureaus during the period covered by this statement.

1 Name	2 Amount Paid
	0
	0
	0

33.1 Amount of payments for legal expenses, if any? \$ _____ 0

33.2 List the name of the firm and the amount paid if any such payment represented 25% or more of the total payments for legal expenses during the period covered by this statement.

1 Name	2 Amount Paid
	0
	0
	0

34.1 Amount of payments for expenditures in connection with matters before legislative bodies, officers or departments of government, if any? \$ _____ 0

GENERAL INTERROGATORIES

34.2 List the name of the firm and the amount paid if any such payment represented 25% or more of the total payment expenditures in connection with matters before legislative bodies, officers or departments of government during the period covered by this statement.

1 Name	2 Amount Paid
	0
	0
	0

GENERAL INTERROGATORIES

PART 2 – PROPERTY & CASUALTY INTERROGATORIES

1.1 Does the reporting entity have any direct Medicare Supplement Insurance in force? Yes [] No [X]

1.2 If yes, indicate premium earned on U.S. business only. \$ 0

1.3 What portion of Item (1.2) is not reported on the Medicare Supplement Insurance Experience Exhibit? \$ 0

1.31 Reason for excluding

.....

.....

.....

1.4 Indicate amount of earned premium attributable to Canadian and/or Other Alien not included in Item (1.2) above. \$ 0

1.5 Indicate total incurred claims on all Medicare Supplement insurance. \$ 0

1.6 Individual policies:

Most current three years:

1.61 Total premium earned \$ 0

1.62 Total incurred claims \$ 0

1.63 Number of covered lives 0

All years prior to most current three years:

1.64 Total premium earned \$ 0

1.65 Total incurred claims \$ 0

1.66 Number of covered lives 0

1.7 Group policies:

Most current three years:

1.71 Total premium earned \$ 0

1.72 Total incurred claims \$ 0

1.73 Number of covered lives 0

All years prior to most current three years:

1.74 Total premium earned \$ 0

1.75 Total incurred claims \$ 0

1.76 Number of covered lives 0

2. Health Test:

	1		2	
	Current Year		Prior Year	
2.1 Premium Numerator	\$ <u> 0</u>		\$ <u> 0</u>	
2.2 Premium Denominator	\$ <u> 0</u>		\$ <u> 0</u>	
2.3 Premium Ratio (2.1/2.2)	<u> 0.00</u>		<u> 0.00</u>	
2.4 Reserve Numerator	\$ <u> 0</u>		\$ <u> 0</u>	
2.5 Reserve Denominator	\$ <u> 0</u>		\$ <u> 0</u>	
2.6 Reserve Ratio (2.4/2.5)	<u> 0.00</u>		<u> 0.00</u>	

3.1 Does the reporting entity issue both participating and non-participating policies? Yes [] No [X]

3.2 If yes, state the amount of calendar year premiums written on:

3.21 Participating policies \$ 0

3.22 Non-participating policies \$ 0

4. For Mutual reporting entities and Reciprocal Exchanges only:

4.1 Does the reporting entity issue assessable policies? Yes [] No [X]

4.2 Does the reporting entity issue non-assessable policies? Yes [] No [X]

4.3 If assessable policies are issued, what is the extent of the contingent liability of the policyholders? 0

4.4 Total amount of assessments paid or ordered to be paid during the year on deposit notes or contingent premiums. \$ 0

5. For Reciprocal Exchanges Only:

5.1 Does the exchange appoint local agents? Yes [] No [X]

5.2 If yes, is the commission paid:

5.21 Out of Attorney's-in-fact compensation Yes [] No [] N/A [X]

5.22 As a direct expense of the exchange Yes [] No [] N/A [X]

5.3 What expenses of the Exchange are not paid out of the compensation of the Attorney-in-fact?

.....

.....

.....

5.4 Has any Attorney-in-fact compensation, contingent on fulfillment of certain conditions, been deferred? Yes [] No [X]

5.5 If yes, give full information

.....

.....

.....

6.1 What provision has this reporting entity made to protect itself from an excessive loss in the event of a catastrophe under a workers' compensation contract issued without limit loss:
See Note 21C

.....

.....

.....

GENERAL INTERROGATORIES

PART 2 – PROPERTY & CASUALTY INTERROGATORIES

- 6.2 Describe the method used to estimate this reporting entity's probable maximum insurance loss, and identify the type of insured exposures comprising that probable maximum loss, the locations of concentrations of those exposures and the external resources (such as consulting firms or computer software models), if any, used in the estimation process:
 The Company employs industry recognized catastrophe modeling software to estimate the Probable Maximum Loss. For property exposures, we employ RiskLink v10.0 from RMS and AIR Classic/2 v12.0. For workers' compensation, Liberty Mutual utilizes RiskLink v10.0 from RMS.
- 6.3 What provision has this reporting entity made (such as a catastrophic reinsurance program) to protect itself from an excessive loss arising from the types and concentrations of insured exposures comprising its probable maximum property insurance loss?
 See Note 21C
- 6.4 Does the reporting entity carry catastrophe reinsurance protection for at least one reinstatement, in an amount sufficient to cover its estimated probable maximum loss attributable to a single loss event or occurrence? Yes No
- 6.5 If no, describe any arrangements or mechanisms employed by the reporting entity to supplement its catastrophe reinsurance program or to hedge its exposure to uninsured catastrophic loss
- 6.6
- 6.7 Has the reporting entity reinsured any risk with any other entity under a quota share reinsurance contract that includes a provision that would limit the reinsurer's losses below the stated quota share percentage (e.g., a deductible, a loss ratio corridor, a loss cap, an aggregate limit or any similar provisions)? Yes No
- 6.8 If yes, indicate the number of reinsurance contracts containing such provisions. _____ 0
- 6.9 If yes, does the amount of reinsurance credit taken reflect the reduction in quota share coverage caused by any applicable limiting provision(s)? Yes No
- 6.10 Has this reporting entity reinsured any risk with any other entity and agreed to release such entity from liability, in whole or in part, from any loss that may occur on this risk, or portion thereof, reinsured? Yes No
- 6.11 If yes, give full information
- 6.12
- 9.1 Has the reporting entity ceded any risk under any reinsurance contract (or under multiple contracts with the same reinsurer or its affiliates) for which during the period covered by the statement: (i) it recorded a positive or negative underwriting result greater than 5% of prior year-end surplus as regards policyholders or it reported calendar year written premium ceded or year-end loss and loss expense reserves ceded greater than 5% of prior year-end surplus as regards policyholders; (ii) it accounted for that contract as reinsurance and not as a deposit; and (iii) the contract(s) contain one or more of the following features or other features that would have similar results:
 (a) A contract term longer than two years and the contract is noncancellable by the reporting entity during the contract term;
 (b) A limited or conditional cancellation provision under which cancellation triggers an obligation by the reporting entity, or an affiliate of the reporting entity, to enter into a new reinsurance contract with the reinsurer, or an affiliate of the reinsurer;
 (c) Aggregate stop loss reinsurance coverage;
 (d) A unilateral right by either party (or both parties) to commute the reinsurance contract, whether conditional or not, except for such provisions which are only triggered by a decline in the credit status of the other party;
 (e) A provision permitting reporting of losses, or payment of losses, less frequently than on a quarterly basis (unless there is no activity during the period); or
 (f) Payment schedule, accumulating retentions from multiple years or any features inherently designed to delay timing of the reimbursement to the ceding entity. Yes No
- 9.2 Has the reporting entity during the period covered by the statement ceded any risk under any reinsurance contract (or under multiple contracts with the same reinsurer or its affiliates), for which, during the period covered by the statement, it recorded a positive or negative underwriting result greater than 5% of prior year-end surplus as regards policyholders or it reported calendar year written premium ceded or year-end loss and loss expense reserves ceded greater than 5% of prior year-end surplus as regards policyholders; excluding cessions to approved pooling arrangements or to captive insurance companies that are directly or indirectly controlling, controlled by, or under common control with (i) one or more unaffiliated policyholders of the reporting entity, or (ii) an association of which one or more unaffiliated policyholders of the reporting entity is a member where:
 (a) The written premium ceded to the reinsurer by the reporting entity or its affiliates represents fifty percent (50%) or more of the entire direct and assumed premium written by the reinsurer based on its most recently available financial statement; or
 (b) Twenty-five percent (25%) or more of the written premium ceded to the reinsurer has been retroceded back to the reporting entity or its affiliates in a separate reinsurance contract. Yes No
- 9.3 If yes to 9.1 or 9.2, please provide the following information in the Reinsurance Summary Supplemental Filing for General Interrogatory 9:
 (a) The aggregate financial statement impact gross of all such ceded reinsurance contracts on the balance sheet and statement of income;
 (b) A summary of the reinsurance contract terms and indicate whether it applies to the contracts meeting the criteria in 9.1 or 9.2; and
 (c) A brief discussion of management's principle objectives in entering into the reinsurance contract including the economic purpose to be achieved.
- 9.4 Except for transactions meeting the requirements of paragraph 32 of SSAP No. 62R, Property and Casualty Reinsurance, has the reporting entity ceded any risk under any reinsurance contract (or multiple contracts with the same reinsurer or its affiliates) during the period covered by the financial statement, and either:
 (a) Accounted for that contract as reinsurance (either prospective or retroactive) under statutory accounting principles ("SAP") and as a deposit under generally accepted accounting principles ("GAAP"); or
 (b) Accounted for that contract as reinsurance under GAAP and as a deposit under SAP? Yes No
- 9.5 If yes to 9.4, explain in the Reinsurance Summary Supplemental Filing for General Interrogatory 9 (Section D) why the contract(s) is treated differently for GAAP and SAP.
- 9.6 The reporting entity is exempt from the Reinsurance Attestation Supplement under one or more of the following criteria:
 (a) The entity does not utilize reinsurance; or, Yes No
 (b) The entity only engages in a 100% quota share contract with an affiliate and the affiliated or lead company has filed an attestation supplement; or Yes No
 (c) The entity has no external cessions and only participates in an intercompany pool and the affiliated or lead company has filed an attestation supplement. Yes No

GENERAL INTERROGATORIES

PART 2 – PROPERTY & CASUALTY INTERROGATORIES

10. If the reporting entity has assumed risks from another entity, there should be charged on account of such reinsurances a reserve equal to that which the original entity would have been required to charge had it retained the risks. Has this been done? Yes [] No [] N/A [X]
- 11.1 Has the reporting entity guaranteed policies issued by any other entity and now in force: Yes [] No [X]
- 11.2 If yes, give full information

- 12.1 If the reporting entity recorded accrued retrospective premiums on insurance contracts on Line 15.3 of the asset schedule, Page 2, state the amount of corresponding liabilities recorded for:
- | | | | | |
|---|--|----|---|--|
| 12.11 Unpaid losses | | \$ | 0 | |
| 12.12 Unpaid underwriting expenses (including loss adjustment expenses) | | \$ | 0 | |
- 12.2 Of the amount on Line 15.3, Page 2, state the amount that is secured by letters of credit, collateral and other funds? \$ _____ 0
- 12.3 If the reporting entity underwrites commercial insurance risks, such as workers' compensation, are premium notes or promissory notes accepted from its insureds covering unpaid premiums and/or unpaid losses? Yes [] No [] N/A [X]
- 12.4 If yes, provide the range of interest rates charged under such notes during the period covered by this statement:
- | | | | | |
|------------|--|-------|------|--|
| 12.41 From | | _____ | 0.00 | |
| 12.42 To | | _____ | 0.00 | |
- 12.5 Are letters of credit or collateral and other funds received from insureds being utilized by the reporting entity to secure premium notes or promissory notes taken by a reporting or to secure any of the reporting entity's reported direct unpaid loss reserves, including unpaid losses under loss deductible features of commercial policies? Yes [] No [X]
- 12.6 If yes, state the amount thereof at December 31 of current year:
- | | | | | |
|----------------------------------|--|----|---|--|
| 12.61 Letters of Credit | | \$ | 0 | |
| 12.62 Collateral and other funds | | \$ | 0 | |
- 13.1 Largest net aggregate amount insured in any one risk (excluding workers' compensation): \$ _____ 0
- 13.2 Does any reinsurance contract considered in the calculation of this amount include an aggregate limit of recovery without also including a reinstatement provision? Yes [] No [X]
- 13.3 State the number of reinsurance contracts (excluding individual facultative risk certificates, but including facultative programs, automatic facilities or facultative obligatory contracts) considered in the calculation of the amount. _____ 1
- 14.1 Is the company a cedant in a multiple cedant reinsurance contract? Yes [] No [X]
- 14.2 If yes, please describe the method of allocating and recording reinsurance among the cedants:

- 14.3 If the answer to 14.1 is yes, are the methods described in item 14.2 entirely contained in the respective multiple cedant reinsurance contracts? Yes [] No [X]
- 14.4 If the answer to 14.3 is no, are all the methods described in 14.2 entirely contained in written agreements? Yes [] No [X]
- 14.5 If the answer to 14.4 is no, please explain:

- 15.1 Has the reporting entity guaranteed any financed premium accounts? Yes [] No [X]
- 15.2 If yes, give full information

- 16.1 Does the reporting entity write any warranty business? Yes [] No [X]
 If yes, disclose the following information for each of the following types of warranty coverage:
- | | 1 | 2 | 3 | 4 | 5 |
|------------------|---------------------------|-------------------------|---------------------------|----------------------------|--------------------------|
| | Direct Losses
Incurred | Direct Losses
Unpaid | Direct Written
Premium | Direct Premium
Unearned | Direct Premium
Earned |
| 16.11 Home | \$ 0 | \$ 0 | \$ 0 | \$ 0 | \$ 0 |
| 16.12 Products | \$ 0 | \$ 0 | \$ 0 | \$ 0 | \$ 0 |
| 16.13 Automobile | \$ 0 | \$ 0 | \$ 0 | \$ 0 | \$ 0 |
| 16.14 Other* | \$ 0 | \$ 0 | \$ 0 | \$ 0 | \$ 0 |

* Disclose type of coverage: _____

GENERAL INTERROGATORIES**PART 2 – PROPERTY & CASUALTY INTERROGATORIES**

17.1 Does the reporting entity include amounts recoverable on unauthorized reinsurance in Schedule F – Part 3 that it excludes from Schedule F – Part 5.

Yes [] No [X]

Incurring but not reported losses on contracts in force prior to July 1, 1984, and not subsequently renewed are exempt from inclusion in Schedule F – Part 5. Provide the following information for this exemption:

17.11 Gross amount of unauthorized reinsurance in Schedule F – Part 3 excluded from Schedule F – Part 5	\$	0
17.12 Unfunded portion of Interrogatory 17.11	\$	0
17.13 Paid losses and loss adjustment expenses portion of Interrogatory 17.11	\$	0
17.14 Case reserves portion of Interrogatory 17.11	\$	0
17.15 Incurred but not reported portion of Interrogatory 17.11	\$	0
17.16 Unearned premium portion of Interrogatory 17.11	\$	0
17.17 Contingent commission portion of Interrogatory 17.11	\$	0

Provide the following information for all other amounts included in Schedule F – Part 3 and excluded from Schedule F – Part 5, not included above.

17.18 Gross amount of unauthorized reinsurance in Schedule F – Part 3 excluded from Schedule F – Part 5	\$	0
17.19 Unfunded portion of Interrogatory 17.18	\$	0
17.20 Paid losses and loss adjustment expenses portion of Interrogatory 17.18	\$	0
17.21 Case reserves portion of Interrogatory 17.18	\$	0
17.22 Incurred but not reported portion of Interrogatory 17.18	\$	0
17.23 Unearned premium portion of Interrogatory 17.18	\$	0
17.24 Contingent commission portion of Interrogatory 17.18	\$	0

18.1 Do you act as a custodian for health savings accounts?

Yes [] No [X]

18.2 If yes, please provide the amount of custodial funds held as of the reporting date.

\$ 0

18.3 Do you act as an administrator for health savings accounts?

Yes [] No [X]

18.4 If yes, please provide the balance of the funds administered as of the reporting date.

\$ 0

FIVE – YEAR HISTORICAL DATA

Show amounts in whole dollars only, no cents; show percentages to one decimal place, i.e., 17.6.

	1	2	3	4	5
	2010	2009	2008	2007	2006
Gross Premiums Written (Page 8, Part 1B, Cols. 1, 2 & 3)					
1. Liability lines (Lines 11.1, 11.2, 16, 17.1, 17.2, 17.3, 18.1, 18.2, 19.1, 19.2 & 19.3, 19.4)	16,777	(2,971,748)	(1,361,754)	3,227,860	7,400,499
2. Property lines (Lines 1, 2, 9, 12, 21 & 26)	212,181	302,455	773,516	2,303,234	4,752,246
3. Property and liability combined lines (Lines 3, 4, 5, 8, 22 & 27)	52,364	47,388	9,236	815,610	1,021,867
4. All other lines (Lines 6, 10, 13, 14, 15, 23, 24, 28, 29, 30 & 34)					
5. Nonproportional reinsurance lines (Lines 31, 32 & 33)					
6. Total (Line 35)	281,322	(2,621,905)	(579,002)	6,346,704	13,174,612
Net Premiums Written (Page 8, Part 1B, Col. 6)					
7. Liability lines (Lines 11.1, 11.2, 16, 17.1, 17.2, 17.3, 18.1, 18.2, 19.1, 19.2 & 19.3, 19.4)					
8. Property lines (Lines 1, 2, 9, 12, 21 & 26)					
9. Property and liability combined lines (Lines 3, 4, 5, 8, 22 & 27)					
10. All other lines (Lines 6, 10, 13, 14, 15, 23, 24, 28, 29, 30 & 34)					
11. Nonproportional reinsurance lines (Lines 31, 32 & 33)					
12. Total (Line 35)					
Statement of Income (Page 4)					
13. Net underwriting gain (loss) (Line 8)					
14. Net investment gain (loss) (Line 11)	1,421,749	1,458,889	1,700,818	1,616,703	1,498,366
15. Total other income (Line 15)		(111)			
16. Dividends to policyholders (Line 17)					
17. Federal and foreign income taxes incurred (Line 19)	175,179	180,120	326,074	169,031	205,867
18. Net income (Line 20)	1,246,570	1,278,658	1,374,744	1,447,672	1,292,499
Balance Sheet Lines (Pages 2 and 3)					
19. Total admitted assets excluding protected cell business (Page 2, Line 26, Col. 3)	48,833,587	46,646,931	45,403,010	31,608,926	31,631,067
20. Premiums and considerations (Page 2, Col. 3)					
20.1 In course of collection (Line 15.1)					
20.2 Deferred and not yet due (Line 15.2)					
20.3 Accrued retrospective premiums (Line 15.3)					
21. Total liabilities excluding protected cell business (Page 3, Line 26)	1,671,338	589,697	1,119,264	301,885	1,309,178
22. Losses (Page 3, Line 1)					
23. Loss adjustment expenses (Page 3, Line 3)					
24. Unearned premiums (Page 3, Line 9)					
25. Capital paid up (Page 3, Lines 30 & 31)	3,000,000	3,000,000	3,000,000	3,000,000	3,000,000
26. Surplus as regards policyholders (Page 3, Line 37)	47,162,249	46,057,234	44,283,746	31,307,041	30,321,889
Cash Flow (Page 5)					
27. Net cash from operations (Line 11)	1,436,020	1,783,748	1,537,446	1,652,949	1,487,546
Risk-Based Capital Analysis					
28. Total adjusted capital	47,162,249	46,057,234	44,283,746	31,307,041	30,321,889
29. Authorized control level risk-based capital	119,026	344,737	189,240	183,052	404,934
Percentage Distribution of Cash, Cash Equivalents and Invested Assets (Page 2, Col. 3) (Item divided by Page 2, Line 12, Col. 3) x 100.0					
30. Bonds (Line 1)	88.5	91.1	72.8	90.6	99.0
31. Stocks (Lines 2.1 & 2.2)					0.9
32. Mortgage loans on real estate (Lines 3.1 and 3.2)					
33. Real estate (Lines 4.1, 4.2 & 4.3)					
34. Cash, cash equivalents and short-term investments (Line 5)	11.5	8.9	27.2	9.3	
35. Contract loans (Line 6)					
36. Derivatives (Line 7)		X X X	X X X	X X X	X X X
37. Other invested assets (Line 8)					
38. Receivables for securities (Line 9)			0.0	0.0	0.0
39. Securities lending reinvested collateral assets (Line 10)		X X X	X X X	X X X	X X X
40. Aggregate write-ins for invested assets (Line 11)					
41. Cash, cash equivalents and invested assets (Line 12)	100.0	100.0	100.0	100.0	100.0
Investments in Parent, Subsidiaries and Affiliates					
42. Affiliated bonds, (Sch. D, Summary, Line 12, Col. 1)					
43. Affiliated preferred stocks (Sch. D, Summary, Line 18, Col. 1)					
44. Affiliated common stocks (Sch. D, Summary, Line 24, Col. 1)					
45. Affiliated short-term investments (subtotals included in Schedule DA Verification, Col. 5, Line 10)					
46. Affiliated mortgage loans on real estate					
47. All other affiliated					
48. Total of above Lines 42 to 47					
49. Percentage of investments in parent, subsidiaries and affiliates to surplus as regards policyholders (Line 48 above divided by Page 3, Col. 1, Line 37 x 100.0)					

FIVE – YEAR HISTORICAL DATA (Continued)

	1	2	3	4	5
	2010	2009	2008	2007	2006
Capital and Surplus Accounts (Page 4)					
50. Net unrealized capital gains (losses) (Line 24)	82,035	(23,994)	(55,937)	(4,935)	(815)
51. Dividends to stockholders (Line 35)					
52. Change in surplus as regards policyholders for the year (Line 38)	1,105,015	1,773,488	1,657,492	985,152	391,969
Gross Losses Paid (Page 9, Part 2, Cols. 1 & 2)					
53. Liability lines (Lines 11.1, 11.2, 16, 17.1, 17.2, 17.3, 18.1, 18.2, 19.1, 19.2 & 19.3, 19.4)	10,979,200	22,716,745	32,775,582	4,204,134	4,925,946
54. Property lines (Lines 1, 2, 9, 12, 21 & 26)	200,288	579,475	417,771	1,746,895	3,198,787
55. Property and liability combined lines (Lines 3, 4, 5, 8, 22 & 27)	38,347	18,749	183,602	1,468,254	551,386
56. All other lines (Lines 6, 10, 13, 14, 15, 23, 24, 28, 29, 30 & 34)					
57. Nonproportional reinsurance lines (Lines 31, 32 & 33)					
58. Total (Line 35)	11,217,835	23,314,969	33,376,955	7,419,283	8,676,119
Net Losses Paid (Page 9, Part 2, Col. 4)					
59. Liability lines (Lines 11.1, 11.2, 16, 17.1, 17.2, 17.3, 18.1, 18.2, 19.1, 19.2 & 19.3, 19.4)					
60. Property lines (Lines 1, 2, 9, 12, 21 & 26)					
61. Property and liability combined lines (Lines 3, 4, 5, 8, 22 & 27)					
62. All other lines (Lines 6, 10, 13, 14, 15, 23, 24, 28, 29, 30 & 34)					
63. Nonproportional reinsurance lines (Lines 31, 32 & 33)					
64. Total (Line 35)					
Operating Percentages (Page 4) (Item divided by Page 4, Line 1) x 100.0					
65. Premiums earned (Line 1)	100.0	100.0	100.0	100.0	100.0
66. Losses incurred (Line 2)					
67. Loss expenses incurred (Line 3)					
68. Other underwriting expenses incurred (Line 4)					
69. Net underwriting gain (loss) (Line 8)					
Other Percentages					
70. Other underwriting expenses to net premiums written (Page 4, Lines 4 + 5 - 15 divided by Page 8, Part 1B, Col. 6, Line 35 x 100.0)					
71. Losses and loss expenses incurred to premiums earned (Page 4, Lines 2 + 3 divided by Page 4, Line 1 x 100.0)					
72. Net premiums written to policyholders' surplus (Page 8, Part 1B, Col. 6, Line 35 divided by Page 3, Line 37, Col. 1 x 100.0)					
One Year Loss Development (000 omitted)					
73. Development in estimated losses and loss expenses incurred prior to current year (Schedule P, Part 2-Summary, Line 12, Col. 11)					
74. Percent of development of losses and loss expenses incurred to policyholders' surplus of prior year end (Line 73 above divided by Page 4, Line 21, Col. 1 x 100.0)					
Two Year Loss Development (000 omitted)					
75. Development in estimated losses and loss expenses incurred 2 years before the current year and prior year (Schedule P, Part 2-Summary, Line 12, Col. 12)					
76. Percent of development of losses and loss expenses incurred to reported policyholders' surplus of second prior year end (Line 75 above divided by Page 4, Line 21, Col. 2 x 100.0)					

NOTE: If a party to a merger, have the two most recent years of this exhibit been restated due to a merger in compliance with the disclosure requirements of SSAP No. 3, Accounting Changes and Correction of Errors?

Yes [] No [X]

If no, please explain:

Not applicable

NONE Schedule P - Part 1 - Summary

NONE Schedule P - Part 2, 3, 4 - Summary

SCHEDULE T - EXHIBIT OF PREMIUMS WRITTEN

Allocated By States and Territories

States, Etc.	1	Gross Premiums, Including Policy and Membership Fees Less Return Premiums and Premiums on Policies Not Taken		4	5	6	7	8	9
		2	3						
	Active Status	Direct Premiums Written	Direct Premiums Earned	Dividends Paid or Credited to Policyholders on Direct Business	Direct Losses Paid (Deducting Salvage)	Direct Losses Incurred	Direct Losses Unpaid	Finance and Service Charges Not Included in Premiums	Direct Premium Written for Federal Purchasing Groups (Included in Col. 2)
1. Alabama	AL	N							
2. Alaska	AK	N							
3. Arizona	AZ	L							
4. Arkansas	AR	N							
5. California	CA	L							
6. Colorado	CO	L							
7. Connecticut	CT	N							
8. Delaware	DE	L							
9. District of Columbia	DC	L							
10. Florida	FL	N							
11. Georgia	GA	N							
12. Hawaii	HI	N							
13. Idaho	ID	N							
14. Illinois	IL	L	225,895	283,218	11,137,278	1,128,903	79,731,033	2,869	
15. Indiana	IN	L							
16. Iowa	IA	L							
17. Kansas	KS	L							
18. Kentucky	KY	N							
19. Louisiana	LA	N							
20. Maine	ME	N							
21. Maryland	MD	L							
22. Massachusetts	MA	N							
23. Michigan	MI	L							
24. Minnesota	MN	N							
25. Mississippi	MS	N							
26. Missouri	MO	L							
27. Montana	MT	N							
28. Nebraska	NE	L							
29. Nevada	NV	L							
30. New Hampshire	NH	N							
31. New Jersey	NJ	N							
32. New Mexico	NM	N							
33. New York	NY	N							
34. North Carolina	NC	N							
35. North Dakota	ND	N							
36. Ohio	OH	L							
37. Oklahoma	OK	N							
38. Oregon	OR	N							
39. Pennsylvania	PA	N							
40. Rhode Island	RI	N							
41. South Carolina	SC	N							
42. South Dakota	SD	L							
43. Tennessee	TN	N							
44. Texas	TX	N							
45. Utah	UT	N							
46. Vermont	VT	N							
47. Virginia	VA	L	55,427	51,932	80,557	(190,559)	10,389	704	
48. Washington	WA	N							
49. West Virginia	WV	N							
50. Wisconsin	WI	L							
51. Wyoming	WY	N							
52. American Samoa	AS	N							
53. Guam	GU	N							
54. Puerto Rico	PR	N							
55. U.S. Virgin Islands	VI	N							
56. Northern Mariana Islands	MP	N							
57. Canada	CN	N							
58. Aggregate Other Alien	OT	X X X							
59. Totals	(a) 18		281,322	335,150	11,217,835	938,344	79,741,422	3,573	

DETAILS OF WRITE-INS									
5801.		X X X							
5802.		X X X							
5803.		X X X							
5898.	Summary of remaining write-ins for Line 58 from overflow page	X X X							
5899.	Totals (Lines 5801 through 5803 plus 5898) (Line 58 above)	X X X							

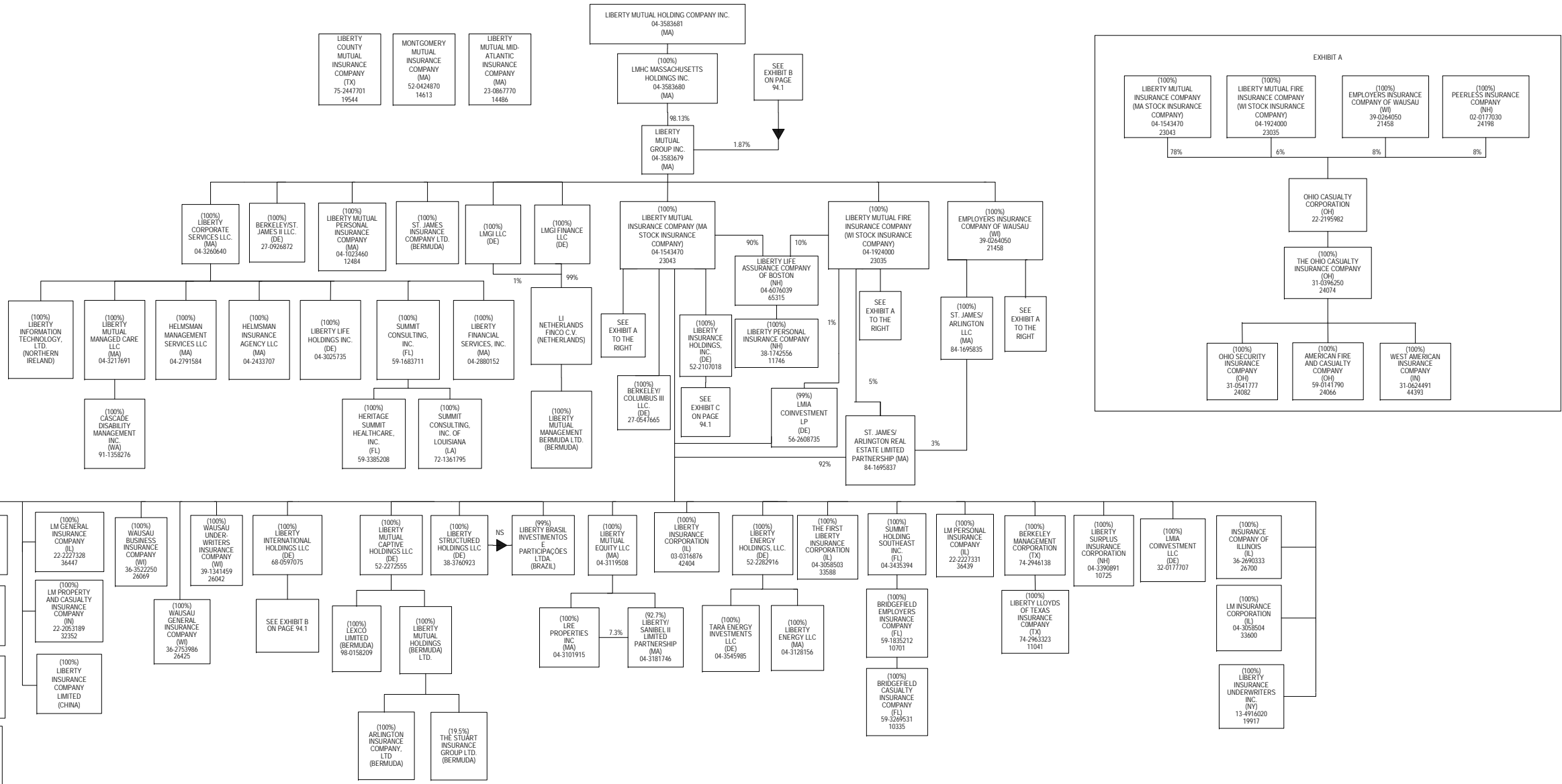
(L) Licensed or Chartered - Licensed Insurance Carrier or Domiciled RRG; (R) Registered - Non-domiciled RRGs; (Q) Qualified - Qualified or Accredited Reinsurer; (E) Eligible - Reporting Entities eligible or approved to write Surplus Lines in the state; (N) None of the above - Not allowed to write business in the state.

Explanation of basis of allocation of premiums by states, etc.	
*Location of coverage - Fire, Allied Lines, Homeowners Multi Peril, Commercial Multi Peril, Earthquake, Boiler and Machinery	*Location of Court - Surety
*States employee's main work place - Worker's Compensation	*Address of Assured - Other Accident and Health
*Location of Principal place of garaging of each individual car - Auto Liability, Auto Physical Damage	*Location of Properties covered - Burglary and Theft
*Principal Location of business or location of coverage - Liability other than Auto, Fidelity, Warranty	*Principal Location of Assured - Ocean Marine, Credit
*Point of origin of shipment or principal location of assured - Inland Marine	*Primary residence of Assured - Aircraft (all perils)
*State in which employees regularly work - Group Accident and Health	

(a) Insert the number of L responses except for Canada and Other Alien.

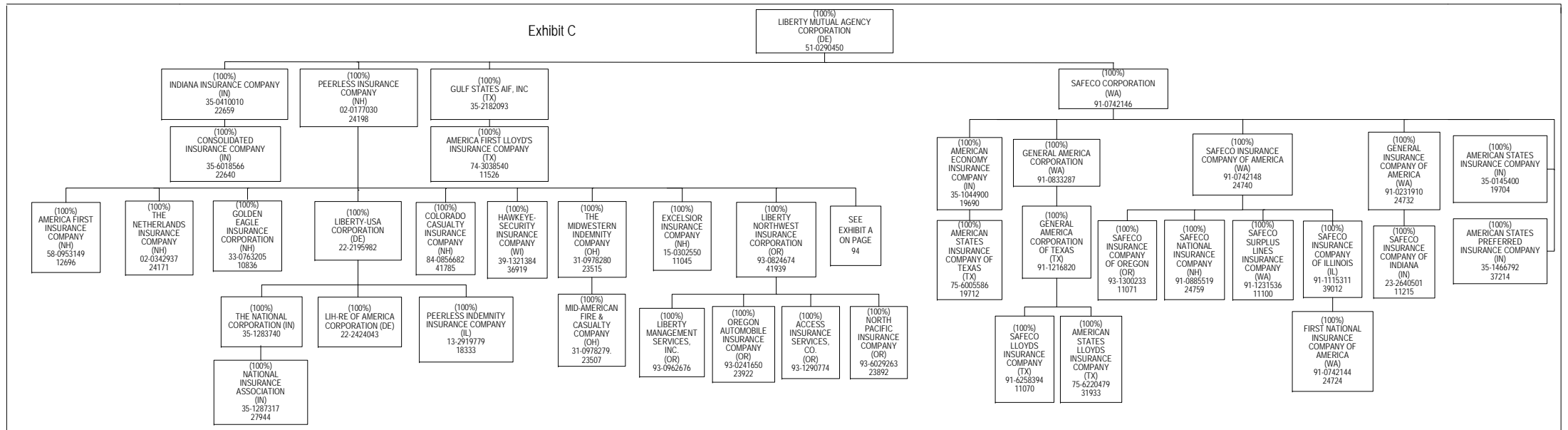
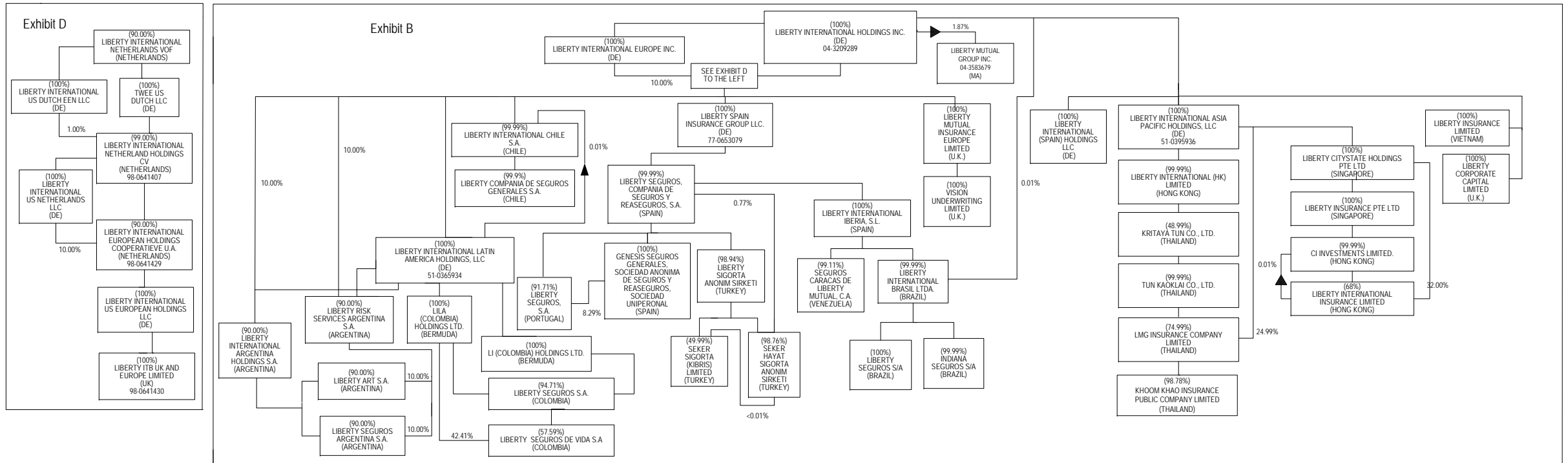
SCHEDULE Y - INFORMATION CONCERNING ACTIVITIES OF INSURER MEMBERS OF A HOLDING COMPANY GROUP

PART 1 - ORGANIZATIONAL CHART



SCHEDULE Y - INFORMATION CONCERNING ACTIVITIES OF INSURER MEMBERS OF A HOLDING COMPANY GROUP

PART 1 - ORGANIZATIONAL CHART



OVERFLOW PAGE FOR WRITE-INS

ALPHABETICAL INDEX TO PROPERTY ANNUAL STATEMENT

Assets	2	Schedule E – Part 2 – Cash Equivalents	E26
Cash Flow	5	Schedule E – Part 3 – Special Deposits	E27
Exhibit of Capital Gains (Losses)	12	Schedule E – Verification Between Years	SI16
Exhibit of Net Investment Income	12	Schedule F – Part 1	20
Exhibit of Nonadmitted Assets	13	Schedule F – Part 2	21
Exhibit of Premiums and Losses (State Page)	19	Schedule F – Part 3	22
Five-Year Historical Data	17	Schedule F – Part 4	23
General Interrogatories	15	Schedule F – Part 5	24
Jurat Page	1	Schedule F – Part 6	25
Liabilities, Surplus and Other Funds	3	Schedule F – Part 7	26
Notes To Financial Statements	14	Schedule F – Part 8	27
Overflow Page For Write-ins	97	Schedule H – Accident and Health Exhibit – Part 1	28
Schedule A – Part 1	E01	Schedule H – Part 2, Part 3 and Part 4	29
Schedule A – Part 2	E02	Schedule H – Part 5 – Health Claims	30
Schedule A – Part 3	E03	Schedule P – Part 1 – Analysis of Losses and Loss Expenses	31
Schedule A – Verification Between Years	SI02	Schedule P – Part 1A – Homeowners/Farmowners	33
Schedule B – Part 1	E04	Schedule P – Part 1B – Private Passenger Auto Liability/Medical	34
Schedule B – Part 2	E05	Schedule P – Part 1C – Commercial Auto/Truck Liability/Medical	35
Schedule B – Part 3	E06	Schedule P – Part 1D – Workers' Compensation	36
Schedule B – Verification Between Years	SI02	Schedule P – Part 1E – Commercial Multiple Peril	37
Schedule BA – Part 1	E07	Schedule P – Part 1F – Section 1 – Medical Professional Liability	
Schedule BA – Part 2	E08	– Occurrence	38
Schedule BA – Part 3	E09	Schedule P – Part 1F – Section 2 – Medical Professional Liability	
Schedule BA – Verification Between Years	SI03	– Claims-Made	39
Schedule D – Part 1	E10	Schedule P – Part 1G - Special Liability (Ocean, Marine, Aircraft (All	
Schedule D – Part 1A – Section 1	SI05	Perils), Boiler and Machinery)	40
Schedule D – Part 1A – Section 2	SI08	Schedule P – Part 1H – Section 1 – Other Liability – Occurrence	41
Schedule D – Part 2 – Section 1	E11	Schedule P – Part 1H – Section 2 – Other Liability – Claims-Made	42
Schedule D – Part 2 – Section 2	E12	Schedule P – Part 1I – Special Property (Fire, Allied Lines, Inland Marine,	
Schedule D – Part 3	E13	Earthquake, Burglary & Theft)	43
Schedule D – Part 4	E14	Schedule P – Part 1J – Auto Physical Damage	44
Schedule D – Part 5	E15	Schedule P – Part 1K – Fidelity/Surety	45
Schedule D – Part 6 – Section 1	E16	Schedule P – Part 1L – Other (Including Credit, Accident and Health)	46
Schedule D – Part 6 – Section 2	E16	Schedule P – Part 1M – International	47
Schedule D – Summary By Country	SI04	Schedule P – Part 1N – Reinsurance	48
Schedule D – Verification Between Years	SI03	Schedule P – Part 1O – Reinsurance	49
Schedule DA – Part 1	E17	Schedule P – Part 1P – Reinsurance	50
Schedule DA – Verification Between Years	SI11	Schedule P – Part 1R – Section 1 – Products Liability – Occurrence	51
Schedule DB – Part A – Section 1	E18	Schedule P – Part 1R – Section 2 – Products Liability – Claims – Made	52
Schedule DB – Part A – Section 2	E19	Schedule P – Part 1S – Financial Guaranty/Mortgage Guaranty	53
Schedule DB – Part A – Verification Between Years	SI12	Schedule P – Part 1T – Warranty	54
Schedule DB – Part B – Section 1	E20	Schedule P – Part 2, Part 3 and Part 4 - Summary	32
Schedule DB – Part B – Section 2	E21	Schedule P – Part 2A – Homeowners/Farmowners	55
Schedule DB – Part B – Verification Between Years	SI12	Schedule P – Part 2B – Private Passenger Auto Liability/Medical	55
Schedule DB – Part C – Section 1	SI13	Schedule P – Part 2C – Commercial Auto/Truck Liability/Medical	55
Schedule DB – Part C – Section 2	SI14	Schedule P – Part 2D – Workers' Compensation	55
Schedule DB - Part D	E22	Schedule P – Part 2E – Commercial Multiple Peril	55
Schedule DB - Verification	SI15	Schedule P – Part 2F – Section 1 – Medical Professional Liability	
Schedule DL - Part 1	E23	– Occurrence	56
Schedule DL - Part 2	E24	Schedule P - Part 2F - Medical Professional Liability - Claims - Made	56
Schedule E – Part 1 – Cash	E25	Schedule P – Part 2G – Special Liability (Ocean Marine, Aircraft (All Perils),	
		Boiler and Machinery)	56

ALPHABETICAL INDEX TO PROPERTY ANNUAL STATEMENT

Schedule P – Part 2H – Section 1 – Other Liability – Occurrence	56	Schedule P – Part 4H – Section 2 – Other Liability – Claims-Made	66
Schedule P – Part 2H – Section 2 – Other Liability – Claims – Made	56	Schedule P – Part 4I – Special Property (Fire, Allied Lines, Inland Marine, Earthquake, Burglary and Theft)	67
Schedule P – Part 2I – Special Property (Fire, Allied Lines, Inland Marine, Earthquake, Burglary, and Theft)	57	Schedule P – Part 4J – Auto Physical Damage	67
Schedule P – Part 2J – Auto Physical Damage	57	Schedule P – Part 4K – Fidelity/Surety	67
Schedule P – Part 2K – Fidelity, Surety	57	Schedule P – Part 4L – Other (Including Credit, Accident and Health)	67
Schedule P – Part 2L – Other (Including Credit, Accident and Health)	57	Schedule P – Part 4M – International	67
Schedule P – Part 2M – International	57	Schedule P – Part 4N – Reinsurance	68
Schedule P – Part 2N – Reinsurance	58	Schedule P – Part 4O – Reinsurance	68
Schedule P – Part 2O – Reinsurance	58	Schedule P – Part 4P – Reinsurance	68
Schedule P – Part 2P – Reinsurance	58	Schedule P – Part 4R – Section 1 – Products Liability – Occurrence	69
Schedule P – Part 2R – Section 1 – Products Liability – Occurrence	59	Schedule P – Part 4R – Section 2 – Products Liability – Claims-Made	69
Schedule P – Part 2R – Section 2 – Products Liability – Claims-Made	59	Schedule P – Part 4S – Financial Guaranty/Mortgage Guaranty	69
Schedule P – Part 2S – Financial Guaranty/Mortgage Guaranty	59	Schedule P – Part 4T – Warranty	69
Schedule P – Part 2T – Warranty	59	Schedule P – Part 5A – Homeowners/Farmowners	70
Schedule P – Part 3A – Homeowners/Farmowners	60	Schedule P – Part 5B – Private Passenger Auto Liability/Medical	71
Schedule P – Part 3B – Private Passenger Auto Liability/Medical	60	Schedule P – Part 5C – Commercial Auto/Truck Liability/Medical	72
Schedule P – Part 3C – Commercial Auto/Truck Liability/Medical	60	Schedule P – Part 5D – Workers' Compensation	73
Schedule P – Part 3D – Workers' Compensation	60	Schedule P – Part 5E – Commercial Multiple Peril	74
Schedule P – Part 3E – Commercial Multiple Peril	60	Schedule P – Part 5F – Medical Professional Liability – Claims-Made	76
Schedule P – Part 3F – Section 1 – Medical Professional Liability – Occurrence	61	Schedule P – Part 5F – Medical Professional Liability – Occurrence	75
Schedule P – Part 3F – Section 2 – Medical Professional Liability – Claims-Made	61	Schedule P – Part 5H – Other Liability – Claims-Made	78
Schedule P – Part 3G – Special Liability (Ocean Marine, Aircraft (All Perils), Boiler and Machinery)	61	Schedule P – Part 5H – Other Liability – Occurrence	77
Schedule P – Part 3H – Section 1 – Other Liability – Occurrence	61	Schedule P – Part 5R – Products Liability – Claims-Made	80
Schedule P – Part 3H – Section 2 – Other Liability – Claims-Made	61	Schedule P – Part 5R – Products Liability – Occurrence	79
Schedule P – Part 3I – Special Property (Fire, Allied Lines, Inland Marine, Earthquake, Burglary, and Theft)	62	Schedule P – Part 5T – Warranty	81
Schedule P – Part 3J – Auto Physical Damage	62	Schedule P – Part 6C – Commercial Auto/Truck Liability/Medical	82
Schedule P – Part 3K – Fidelity/Surety	62	Schedule P – Part 6D – Workers' Compensation	82
Schedule P – Part 3L – Other (Including Credit, Accident and Health)	62	Schedule P – Part 6E – Commercial Multiple Peril	83
Schedule P – Part 3M – International	62	Schedule P – Part 6H – Other Liability – Claims-Made	84
Schedule P – Part 3N – Reinsurance	63	Schedule P – Part 6H – Other Liability – Occurrence	83
Schedule P – Part 3O – Reinsurance	63	Schedule P – Part 6M – International	84
Schedule P – Part 3P – Reinsurance	63	Schedule P – Part 6N – Reinsurance	85
Schedule P – Part 3R – Section 1 – Products Liability – Occurrence	64	Schedule P – Part 6O – Reinsurance	85
Schedule P – Part 3R – Section 2 – Products Liability – Claims-Made	64	Schedule P – Part 6R – Products Liability – Claims-Made	86
Schedule P – Part 3S – Financial Guaranty/Mortgage Guaranty	64	Schedule P – Part 6R – Products Liability – Occurrence	86
Schedule P – Part 3T – Warranty	64	Schedule P – Part 7A – Primary Loss Sensitive Contracts	87
Schedule P – Part 4A – Homeowners/Farmowners	65	Schedule P – Part 7B – Reinsurance Loss Sensitive Contracts	89
Schedule P – Part 4B – Private Passenger Auto Liability/Medical	65	Schedule P Interrogatories	91
Schedule P – Part 4C – Commercial Auto/Truck Liability/Medical	65	Schedule T – Exhibit of Premiums Written	92
Schedule P – Part 4D – Workers' Compensation	65	Schedule T – Part 2 – Interstate Compact	93
Schedule P – Part 4E – Commercial Multiple Peril	65	Schedule Y – Information Concerning Activities of Insurer Members of a Holding Company Group	94
Schedule P – Part 4F – Section 1 – Medical Professional Liability – Occurrence	66	Schedule Y – Part 2 – Summary of Insurer's Transactions With Any Affiliates	95
Schedule P – Part 4F – Section 2 – Medical Professional Liability – Claims-Made	66	Statement of Income	4
Schedule P – Part 4G – Special Liability (Ocean Marine, Aircraft (All Perils), Boiler and Machinery)	66	Summary Investment Schedule	SI01
Schedule P – Part 4H – Section 1 – Other Liability – Occurrence	66	Supplemental Exhibits and Schedules Interrogatories	96
		Underwriting and Investment Exhibit Part 1	6
		Underwriting and Investment Exhibit Part 1A	7
		Underwriting and Investment Exhibit Part 1B	8
		Underwriting and Investment Exhibit Part 2	9
		Underwriting and Investment Exhibit Part 2A	10
		Underwriting and Investment Exhibit Part 3	11