

ANNUAL STATEMENT

OF THE

Excelsior Insurance Company

of **Keene**

in the state of **New Hampshire**

TO THE

Insurance Department

OF THE

STATE OF

**FOR THE YEAR ENDED
December 31, 2007**

PROPERTY AND CASUALTY

2007



11045200720100100

ANNUAL STATEMENT
For the Year Ended December 31, 2007
OF THE CONDITION AND AFFAIRS OF THE
Excelsior Insurance Company

NAIC Group Code 0111 0111 NAIC Company Code 11045 Employer's ID Number 15-0302550
Organized under the Laws of New Hampshire, State of Domicile or Port of Entry New Hampshire
Country of Domicile United States of America
Incorporated/Organized: July 19, 1988 Commenced Business: July 19, 1988
Statutory Home Office: 62 Maple Avenue Keene, NH 03431
Main Administrative Office: 62 Maple Avenue Keene, NH 03431 603-352-3221
Mail Address: 175 Berkeley Street Boston, MA 02116
Primary Location of Books and Records: 175 Berkeley Street Boston, MA 02116 617-357-9500
Internet Website Address: www.LibertyMutualAgencyMarkets.com
Statutory Statement Contact: Joanne Connolly 617-357-9500 44393
Joanne.Connolly@LibertyMutual.com 617-574-5955

OFFICERS
Chairman of the Board
Gary Richard Gregg

Table with 2 columns: Name, Title. Row 1: Gary Richard Gregg, President and Chief Executive Officer. Row 2: Edmund Campion Kenealy, Secretary. Row 3: James Francis Dore, Treasurer and Chief Financial Officer.

Vice-Presidents

Table with 4 columns: Name, Title, Name, Title. Row 1: Anthony Alexander Fontanes, EVP and Chief Investment Officer, Joseph Anthony Gilles, Executive Vice President. Row 2: Scott Rhodes Goodby, EVP and Chief Operating Officer.

DIRECTORS OR TRUSTEES

Table with 4 columns: Name, Title, Name, Title. Row 1: James Francis Dore, John Derek Doyle, Joseph Anthony Gilles, Scott Rhodes Goodby. Row 2: Gary Richard Gregg, Christopher Charles Mansfield.

State of Massachusetts
County of Suffolk ss

The officers of this reporting entity being duly sworn, each depose and say that they are the described officers of said reporting entity, and that on the reporting period stated above, all of the herein described assets were the absolute property of the said reporting entity, free and clear from any liens or claims thereon, except as herein stated, and that this statement, together with related exhibits, schedules and explanations therein contained, annexed or referred to, is a full and true statement of all the assets and liabilities and of the condition and affairs of the said reporting entity as of the reporting period stated above, and of its income and deductions therefrom for the period ended, and have been completed in accordance with the NAIC Annual Statement Instructions and Accounting Practices and Procedures manual except to the extent that: (1) state law may differ; or, (2) that state rules or regulations require differences in reporting not related to accounting practices and procedures, according to the best of their information, knowledge and belief, respectively. Furthermore, the scope of this attestation by the described officers also includes the related corresponding electronic filing with the NAIC, when required, that is an exact copy (except for formatting differences due to electronic filing) of the enclosed statement. The electronic filing may be requested by various regulators in lieu of or in addition to the enclosed statement.

(Signature) Gary Richard Gregg (Printed Name) 1. President and Chief Executive Officer (Title)
(Signature) Edmund Campion Kenealy (Printed Name) 2. Secretary (Title)
(Signature) James Francis Dore (Printed Name) 3. Treasurer and Chief Financial Officer (Title)

Subscribed and sworn to before me this
31st day of January, 2008

a. Is this an original filing? YES [X] NO []
b. If no: 1. State the amendment number
2. Date filed
3. Number of pages attached

ASSETS

| | Current Year | | | Prior Year |
|---|--------------|--------------------|--------------------------------------|---------------------|
| | 1 | 2 | 3 | 4 |
| | Assets | Nonadmitted Assets | Net Admitted Assets (Cols. 1 - 2) | Net Admitted Assets |
| 1. Bonds (Schedule D) | 36,223,590 | | 36,223,590 | 36,563,224 |
| 2. Stocks (Schedule D): | | | | |
| 2.1 Preferred stocks | | | | |
| 2.2 Common stocks | | | | |
| 3. Mortgage loans on real estate (Schedule B): | | | | |
| 3.1 First liens | | | | |
| 3.2 Other than first liens | | | | |
| 4. Real estate (Schedule A): | | | | |
| 4.1 Properties occupied by the company (less \$ 0 encumbrances) | | | | |
| 4.2 Properties held for the production of income (less \$ 0 encumbrances) | | | | |
| 4.3 Properties held for sale (less \$ 0 encumbrances) | | | | |
| 5. Cash (\$ 0, Schedule E-Part 1), cash equivalents (\$ 0 Schedule E-Part 2) and short-term investments (\$ 5,558,790, Schedule DA) | 5,558,790 | | 5,558,790 | 3,332,353 |
| 6. Contract loans (including \$ 0 premium notes) | | | | |
| 7. Other invested assets (Schedule BA) | | | | |
| 8. Receivables for securities | 1,541 | | 1,541 | 555 |
| 9. Aggregate write-ins for invested assets | | | | |
| 10. Subtotals, cash and invested assets (Lines 1 to 9) | 41,783,921 | | 41,783,921 | 39,896,132 |
| 11. Title plants less \$ 0 charged off (for Title insurers only) | | | | |
| 12. Investment income due and accrued | 464,327 | | 464,327 | 485,445 |
| 13. Premiums and considerations: | | | | |
| 13.1 Uncollected premiums and agents' balances in the course of collection | | | | |
| 13.2 Deferred premiums, agents' balances and installments booked but deferred and not yet due (including \$ 0 earned but unbilled premiums) | | | | |
| 13.3 Accrued retrospective premiums | | | | |
| 14. Reinsurance: | | | | |
| 14.1 Amounts recoverable from reinsurers | | | | |
| 14.2 Funds held by or deposited with reinsured companies | | | | |
| 14.3 Other amounts receivable under reinsurance contracts | | | | |
| 15. Amounts receivable relating to uninsured plans | | | | |
| 16.1 Current federal and foreign income tax recoverable and interest thereon | 107,269 | | 107,269 | 81,633 |
| 16.2 Net deferred tax asset | 897,000 | | 897,000 | 464,100 |
| 17. Guaranty funds receivable or on deposit | | | | |
| 18. Electronic data processing equipment and software | | | | |
| 19. Furniture and equipment, including health care delivery assets (\$ 0) | | | | |
| 20. Net adjustment in assets and liabilities due to foreign exchange rates | | | | |
| 21. Receivables from parent, subsidiaries and affiliates | 295,244 | | 295,244 | 530,424 |
| 22. Health care (\$ 0) and other amounts receivable | | | | |
| 23. Aggregate write-ins for other than invested assets | | | | 1,096,465 |
| 24. Total assets excluding Separate Accounts, Segregated Accounts and Protected Cell Accounts (Lines 10 to 23) | 43,547,761 | | 43,547,761 | 42,554,199 |
| 25. From Separate Accounts, Segregated Accounts and Protected Cell Accounts | | | | |
| 26. Total (Lines 24 and 25) | 43,547,761 | | 43,547,761 | 42,554,199 |

| DETAILS OF WRITE-INS | | | | |
|---|--|--|--|-----------|
| 0901. | | | | |
| 0902. | | | | |
| 0903. | | | | |
| 0998. Summary of remaining write-ins for Line 09 from overflow page | | | | |
| 0999. Totals (Lines 0901 through 0903 plus 0998) (Line 09 above) | | | | |
| 2301. Other assets | | | | 1,096,465 |
| 2302. | | | | |
| 2303. | | | | |
| 2398. Summary of remaining write-ins for Line 23 from overflow page | | | | |
| 2399. Totals (Lines 2301 through 2303 plus 2398) (Line 23 above) | | | | 1,096,465 |

| LIABILITIES, SURPLUS AND OTHER FUNDS | 1 Current Year | 2 Prior Year |
|--|-------------------|-----------------|
| 1. Losses (Part 2A, Line 34, Column 8) | | |
| 2. Reinsurance payable on paid losses and loss adjustment expenses (Schedule F, Part 1, Column 6) | | |
| 3. Loss adjustment expenses (Part 2A, Line 34, Column 9) | | |
| 4. Commissions payable, contingent commissions and other similar charges | | |
| 5. Other expenses (excluding taxes, licenses and fees) | | |
| 6. Taxes, licenses and fees (excluding federal and foreign income taxes) | | |
| 7.1 Current federal and foreign income taxes (including \$ 0 on realized capital gains (losses)) | | |
| 7.2 Net deferred tax liability | | |
| 8. Borrowed money \$ 0 and interest thereon \$ 0 | | |
| 9. Unearned premiums (Part 1A, Line 37, Column 5) (after deducting unearned premiums for ceded reinsurance of \$ 123,497,589 and including warranty reserves of \$ 0) | | |
| 10. Advance premium | | |
| 11. Dividends declared and unpaid: | | |
| 11.1 Stockholders | | |
| 11.2 Policyholders | | |
| 12. Ceded reinsurance premiums payable (net of ceding commissions) | | |
| 13. Funds held by company under reinsurance treaties (Schedule F, Part 3, Column 19) | | |
| 14. Amounts withheld or retained by company for account of others | | 858,752 |
| 15. Remittances and items not allocated | | |
| 16. Provision for reinsurance (Schedule F, Part 7) | | |
| 17. Net adjustments in assets and liabilities due to foreign exchange rates | | |
| 18. Drafts outstanding | | |
| 19. Payable to parent, subsidiaries and affiliates | 605,867 | 642,795 |
| 20. Payable for securities | | |
| 21. Liability for amounts held under uninsured plans | | |
| 22. Capital notes \$ 0 and interest thereon \$ 0 | | |
| 23. Aggregate write-ins for liabilities | | 2,084 |
| 24. Total liabilities excluding protected cell liabilities (Lines 1 through 23) | 605,867 | 1,503,631 |
| 25. Protected cell liabilities | | |
| 26. Total liabilities (Lines 24 and 25) | 605,867 | 1,503,631 |
| 27. Aggregate write-ins for special surplus funds | | |
| 28. Common capital stock | 3,800,000 | 3,800,000 |
| 29. Preferred capital stock | | |
| 30. Aggregate write-ins for other than special surplus funds | | |
| 31. Surplus notes | | |
| 32. Gross paid in and contributed surplus | 12,614,590 | 12,614,590 |
| 33. Unassigned funds (surplus) | 26,527,304 | 24,635,978 |
| 34. Less treasury stock, at cost: | | |
| 34.1 0 shares common (value included in Line 28 \$ 0) | | |
| 34.2 0 shares preferred (value included in Line 29 \$ 0) | | |
| 35. Surplus as regards policyholders (Lines 27 to 33, less 34) (Page 4, Line 39) | 42,941,894 | 41,050,568 |
| 36. TOTALS (Page 2, Line 26, Col. 3) | 43,547,761 | 42,554,199 |

| DETAILS OF WRITE-INS | | |
|---|--|-------|
| 2301. Other liabilities | | 2,084 |
| 2302. | | |
| 2303. | | |
| 2398. Summary of remaining write-ins for Line 23 from overflow page | | |
| 2399. Totals (Lines 2301 through 2303 plus 2398) (Line 23 above) | | 2,084 |
| 2701. | | |
| 2702. | | |
| 2703. | | |
| 2798. Summary of remaining write-ins for Line 27 from overflow page | | |
| 2799. Totals (Lines 2701 through 2703 plus 2798) (Line 27 above) | | |
| 3001. | | |
| 3002. | | |
| 3003. | | |
| 3098. Summary of remaining write-ins for Line 30 from overflow page | | |
| 3099. Totals (Lines 3001 through 3003 plus 3098) (Line 30 above) | | |

| STATEMENT OF INCOME | 1 | 2 |
|--|--------------|--------------|
| | Current Year | Prior Year |
| UNDERWRITING INCOME | | |
| 1. Premiums earned (Part 1, Line 34, Column 4) | | |
| DEDUCTIONS | | |
| 2. Losses incurred (Part 2, Line 34, Column 7) | | |
| 3. Loss expenses incurred (Part 3, Line 25, Column 1) | | |
| 4. Other underwriting expenses incurred (Part 3, Line 25, Column 2) | | |
| 5. Aggregate write-ins for underwriting deductions | | |
| 6. Total underwriting deductions (Lines 2 through 5) | | |
| 7. Net income of protected cells | | |
| 8. Net underwriting gain (loss) (Line 1 minus Line 6 plus Line 7) | | |
| INVESTMENT INCOME | | |
| 9. Net investment income earned (Exhibit of Net Investment Income, Line 17) | 1,882,287 | 3,132,719 |
| 10. Net realized capital gains (losses) less capital gains tax of \$ 0 (Exhibit of Capital Gains (Losses)) | | 51,138 |
| 11. Net investment gain (loss) (Lines 9 + 10) | 1,882,287 | 3,183,857 |
| OTHER INCOME | | |
| 12. Net gain (loss) from agents' or premium balances charged off (amount recovered \$ 0 amount charged off \$ 0) | | |
| 13. Finance and service charges not included in premiums | | |
| 14. Aggregate write-ins for miscellaneous income | (1,443) | (790) |
| 15. Total other income (Lines 12 through 14) | (1,443) | (790) |
| 16. Net income before dividends to policyholders, after capital gains tax and before all other federal and foreign income taxes (Lines 8 + 11 + 15) | 1,880,844 | 3,183,067 |
| 17. Dividends to policyholders | | |
| 18. Net income, after dividends to policyholders, after capital gains tax and before all other federal and foreign income taxes (Line 16 minus Line 17) | 1,880,844 | 3,183,067 |
| 19. Federal and foreign income taxes incurred | 422,550 | 411,611 |
| 20. Net income (Line 18 minus Line 19) (to Line 22) | 1,458,294 | 2,771,456 |
| CAPITAL AND SURPLUS ACCOUNT | | |
| 21. Surplus as regards policyholders, December 31 prior year (Page 4, Line 39, Column 2) | 41,050,568 | 65,744,744 |
| 22. Net income (from Line 20) | 1,458,294 | 2,771,456 |
| 23. Net transfers (to) from Protected Cell accounts | | |
| 24. Change in net unrealized capital gains or (losses) less capital gains tax of \$ 0 | | |
| 25. Change in net unrealized foreign exchange capital gain (loss) | | |
| 26. Change in net deferred income tax | (695,000) | 55,000 |
| 27. Change in nonadmitted assets (Exhibit of Nonadmitted Assets, Line 26, Col. 3) | 1,128,032 | 53,368 |
| 28. Change in provision for reinsurance (Page 3, Line 16, Column 2 minus Column 1) | | |
| 29. Change in surplus notes | | |
| 30. Surplus (contributed to) withdrawn from protected cells | | |
| 31. Cumulative effect of changes in accounting principles | | |
| 32. Capital changes: | | |
| 32.1 Paid in | | |
| 32.2 Transferred from surplus (Stock Dividend) | | |
| 32.3 Transferred to surplus | | |
| 33. Surplus adjustments: | | |
| 33.1 Paid in | | |
| 33.2 Transferred to capital (Stock Dividend) | | |
| 33.3 Transferred from capital | | |
| 34. Net remittances from or (to) Home Office | | |
| 35. Dividends to stockholders | | (27,574,000) |
| 36. Change in treasury stock (Page 3, Lines 34.1 and 34.2, Column 2 minus Column 1) | | |
| 37. Aggregate write-ins for gains and losses in surplus | | |
| 38. Change in surplus as regards policyholders for the year (Lines 22 through 37) | 1,891,326 | (24,694,176) |
| 39. Surplus as regards policyholders, December 31 current year (Line 21 plus Line 38) (Page 3, Line 35) | 42,941,894 | 41,050,568 |

| DETAILS OF WRITE-INS | | |
|---|---------|-------|
| 0501. | | |
| 0502. | | |
| 0503. | | |
| 0598. Summary of remaining write-ins for Line 5 from overflow page | | |
| 0599. Totals (Lines 0501 through 0503 plus Line 0598) (Line 5 above) | | |
| 1401. Other income /(expense) | (1,443) | (790) |
| 1402. | | |
| 1403. | | |
| 1498. Summary of remaining write-ins for Line 14 from overflow page | | |
| 1499. Totals (Lines 1401 through 1403 plus Line 1498) (Line 14 above) | (1,443) | (790) |
| 3701. | | |
| 3702. | | |
| 3703. | | |
| 3798. Summary of remaining write-ins for Line 37 from overflow page | | |
| 3799. Totals (Lines 3701 through 3703 plus Line 3798) (Line 37 above) | | |

CASH FLOW

| | 1 | 2 |
|---|--------------|--------------|
| | Current Year | Prior Year |
| Cash from Operations | | |
| 1. Premiums collected net of reinsurance | | (16,776,183) |
| 2. Net investment income | 1,916,447 | 3,442,914 |
| 3. Miscellaneous income | 236,269 | 4,365 |
| 4. Total (Lines 1 through 3) | 2,152,716 | (13,328,904) |
| 5. Benefit and loss related payments | | (8,782,300) |
| 6. Net transfers to Separate Accounts, Segregated Accounts and Protected Cell Accounts | | |
| 7. Commissions, expenses paid and aggregate write-ins for deductions | | |
| 8. Dividends paid to policyholders | | |
| 9. Federal and foreign income taxes paid (recovered) net of \$ 0 tax on capital gains (losses) | 448,185 | 859,191 |
| 10. Total (Lines 5 through 9) | 448,185 | (7,923,109) |
| 11. Net cash from operations (Line 4 minus Line 10) | 1,704,531 | (5,405,795) |
| Cash from Investments | | |
| 12. Proceeds from investments sold, matured or repaid: | | |
| 12.1 Bonds | 7,298,971 | 31,989,502 |
| 12.2 Stocks | | |
| 12.3 Mortgage loans | | |
| 12.4 Real estate | | |
| 12.5 Other invested assets | | |
| 12.6 Net gains or (losses) on cash, cash equivalents and short-term investments | | |
| 12.7 Miscellaneous proceeds | | |
| 12.8 Total investment proceeds (Lines 12.1 to 12.7) | 7,298,971 | 31,989,502 |
| 13. Cost of investments acquired (long-term only): | | |
| 13.1 Bonds | 6,972,378 | 4,914,144 |
| 13.2 Stocks | | |
| 13.3 Mortgage loans | | |
| 13.4 Real estate | | |
| 13.5 Other invested assets | | |
| 13.6 Miscellaneous applications | 986 | 390 |
| 13.7 Total investments acquired (Lines 13.1 to 13.6) | 6,973,364 | 4,914,534 |
| 14. Net increase (decrease) in contract loans and premium notes | | |
| 15. Net cash from investments (Line 12.8 minus Line 13.7 minus Line 14) | 325,607 | 27,074,968 |
| Cash from Financing and Miscellaneous Sources | | |
| 16. Cash provided (applied): | | |
| 16.1 Surplus notes, capital notes | | |
| 16.2 Capital and paid in surplus, less treasury stock | | |
| 16.3 Borrowed funds | | |
| 16.4 Net deposits on deposit-type contracts and other insurance liabilities | | |
| 16.5 Dividends to stockholders | | 27,574,000 |
| 16.6 Other cash provided (applied) | 196,299 | 7,662,893 |
| 17. Net cash from financing and miscellaneous sources (Lines 16.1 to 16.4 minus Line 16.5 plus Line 16.6) | 196,299 | (19,911,107) |
| RECONCILIATION OF CASH, CASH EQUIVALENTS AND SHORT-TERM INVESTMENTS | | |
| 18. Net change in cash, cash equivalents and short-term investments (Line 11, plus Lines 15 and 17) | 2,226,437 | 1,758,066 |
| 19. Cash, cash equivalents and short-term investments: | | |
| 19.1 Beginning of year | 3,332,353 | 1,574,287 |
| 19.2 End of year (Line 18 plus Line 19.1) | 5,558,790 | 3,332,353 |

Note: Supplemental disclosures of cash flow information for non-cash transactions:

| | | |
|---------------|--|--|
| 20.0001. | | |
| 20.0002. | | |
| 20.0003. | | |

NONE **Underwriting and Investment Exhibit - Part 1**

NONE **Underwriting and Investment Exhibit - Part 1A**

UNDERWRITING AND INVESTMENT EXHIBIT

PART 1B - PREMIUMS WRITTEN

| Line of Business | 1 Direct Business (a) | Reinsurance Assumed | | Reinsurance Ceded | | 6 Net Premiums Written Cols. 1 + 2 + 3 - 4 - 5 |
|---|-----------------------------|-------------------------|---------------------------------|-----------------------|-------------------------------|--|
| | | 2 From Affiliates | 3 From Non- Affiliates | 4 To Affiliates | 5 To Non- Affiliates | |
| 1. Fire | 1,505,747 | | | 1,505,747 | | |
| 2. Allied lines | 1,245,969 | | | 1,245,969 | | |
| 3. Farmowners multiple peril | | | | | | |
| 4. Homeowners multiple peril | 14,574,468 | | | 14,574,468 | | |
| 5. Commercial multiple peril | 77,123,951 | | | 77,123,951 | | |
| 6. Mortgage guaranty | | | | | | |
| 8. Ocean marine | | | | | | |
| 9. Inland marine | 15,503,395 | | | 15,503,395 | | |
| 10. Financial guaranty | | | | | | |
| 11.1 Medical malpractice - occurrence | | | | | | |
| 11.2 Medical malpractice - claims-made | | | | | | |
| 12. Earthquake | 123,663 | | | 123,663 | | |
| 13. Group accident and health | | | | | | |
| 14. Credit accident and health (group and individual) | | | | | | |
| 15. Other accident and health | | | | | | |
| 16. Workers' compensation | 79,542,730 | | | 79,542,730 | | |
| 17.1 Other liability - occurrence | 19,256,259 | | | 19,256,259 | | |
| 17.2 Other liability - claims-made | | | | | | |
| 18.1 Products liability - occurrence | 152,410 | | | 152,410 | | |
| 18.2 Products liability - claims-made | | | | | | |
| 19.1, 19.2 Private passenger auto liability | 18,936 | | | 18,936 | | |
| 19.3, 19.4 Commercial auto liability | 40,053,090 | | | 40,053,090 | | |
| 21. Auto physical damage | 11,863,993 | | | 11,863,993 | | |
| 22. Aircraft (all perils) | | | | | | |
| 23. Fidelity | | | | | | |
| 24. Surety | | | | | | |
| 26. Burglary and theft | 6,639 | | | 6,639 | | |
| 27. Boiler and machinery | | | | | | |
| 28. Credit | | | | | | |
| 29. International | | | | | | |
| 30. Reinsurance-Nonproportional Assumed Property | X X X | | | | | |
| 31. Reinsurance-Nonproportional Assumed Liability | X X X | | | | | |
| 32. Reinsurance-Nonproportional Assumed Financial Lines | X X X | | | | | |
| 33. Aggregate write-ins for other lines of business | | | | | | |
| 34. TOTALS | 260,971,250 | | | 260,971,250 | | |

| DETAILS OF WRITE-INS | | | | | | |
|---|--|--|--|--|--|--|
| 3301. | | | | | | |
| 3302. | | | | | | |
| 3303. | | | | | | |
| 3398. Summary of remaining write-ins for Line 33 from overflow page | | | | | | |
| 3399. Totals (Lines 3301 through 3303 plus 3398) (Line 33 above) | | | | | | |

(a) Does the company's direct premiums written include premiums recorded on an installment basis? Yes [] No [X]
 If yes: 1. The amount of such installment premiums \$ 0
 2. Amount at which such installment premiums would have been reported had they been recorded on an annualized basis \$ 0

**UNDERWRITING AND INVESTMENT EXHIBIT
PART 2 - LOSSES PAID AND INCURRED**

| Line of Business | Losses Paid Less Salvage | | | | 5 Net Losses Unpaid Current Year (Part 2A, Col. 8) | 6 Net Losses Unpaid Prior Year | 7 Losses Incurred Current Year (Cols. 4 + 5 - 6) | 8 Percentage of Losses Incurred (Col. 7, Part 2) to Premiums Earned (Col. 4, Part 1) |
|---|--------------------------|-----------------------------|-------------------------------|--|--|---|--|---|
| | 1 Direct Business | 2 Reinsurance Assumed | 3 Reinsurance Recovered | 4 Net Payments (Cols. 1 + 2 - 3) | | | | |
| 1. Fire | 6,549,853 | | 6,549,853 | | | | | |
| 2. Allied lines | 446,980 | | 446,980 | | | | | |
| 3. Farmowners multiple peril | | | | | | | | |
| 4. Homeowners multiple peril | 5,408,454 | | 5,408,454 | | | | | |
| 5. Commercial multiple peril | 29,707,802 | | 29,707,802 | | | | | |
| 6. Mortgage guaranty | | | | | | | | |
| 8. Ocean marine | | | | | | | | |
| 9. Inland marine | 5,554,122 | | 5,554,122 | | | | | |
| 10. Financial guaranty | | | | | | | | |
| 11.1 Medical malpractice - occurrence | | | | | | | | |
| 11.2 Medical malpractice - claims - made | | | | | | | | |
| 12. Earthquake | | | | | | | | |
| 13. Group accident and health | | | | | | | | |
| 14. Credit accident and health (group and individual) | | | | | | | | |
| 15. Other accident and health | | | | | | | | |
| 16. Workers' compensation | 27,081,167 | | 27,081,167 | | | | | |
| 17.1 Other liability - occurrence | 722,960 | | 722,960 | | | | | |
| 17.2 Other liability - claims - made | | | | | | | | |
| 18.1 Products liability - occurrence | 25,562 | | 25,562 | | | | | |
| 18.2 Products liability - claims - made | | | | | | | | |
| 19.1, 19.2 Private passenger auto liability | 565,240 | | 565,240 | | | | | |
| 19.3, 19.4 Commercial auto liability | 24,610,181 | | 24,610,181 | | | | | |
| 21. Auto physical damage | 6,250,206 | | 6,250,206 | | | | | |
| 22. Aircraft (all perils) | | | | | | | | |
| 23. Fidelity | | | | | | | | |
| 24. Surety | | | | | | | | |
| 26. Burglary and theft | | | | | | | | |
| 27. Boiler and machinery | | | | | | | | |
| 28. Credit | | | | | | | | |
| 29. International | | | | | | | | |
| 30. Reinsurance-Nonproportional Assumed Property | X X X | | | | | | | |
| 31. Reinsurance-Nonproportional Assumed Liability | X X X | | | | | | | |
| 32. Reinsurance-Nonproportional Assumed Financial Lines | X X X | | | | | | | |
| 33. Aggregate write-ins for other lines of business | | | | | | | | |
| 34. TOTALS | 106,922,527 | | 106,922,527 | | | | | |

DETAILS OF WRITE-INS

| | | | | | | | |
|---|--|--|--|--|--|--|--|
| 3301. | | | | | | | |
| 3302. | | | | | | | |
| 3303. | | | | | | | |
| 3398. Summary of remaining write-ins for Line 33 from overflow page | | | | | | | |
| 3399. Totals (Lines 3301 through 3303 + 3398) (Line 33 above) | | | | | | | |

**UNDERWRITING AND INVESTMENT EXHIBIT
PART 2A - UNPAID LOSSES AND LOSS ADJUSTMENT EXPENSES**

| Line of Business | Reported Losses | | | | Incurred But Not Reported | | | 8 Net Losses Unpaid (Cols. 4 + 5 + 6 - 7) | 9 Unpaid Loss Adjustment Expenses |
|---|-----------------|--------------------------|--|---|---------------------------|--------------------------|------------------------|---|--------------------------------------|
| | 1 Direct | 2 Reinsurance Assumed | 3 Deduct Reinsurance Recoverable from Authorized and Unauthorized Companies | 4 Net Losses Excl. Incurred But Not Reported (Cols. 1 + 2 - 3) | 5 Direct | 6 Reinsurance Assumed | 7 Reinsurance Ceded | | |
| 1. Fire | 844,815 | | 844,815 | | 11,470 | | 11,470 | | |
| 2. Allied lines | 11,307 | | 11,307 | | 9,474 | | 9,474 | | |
| 3. Farmowners multiple peril | | | | | | | | | |
| 4. Homeowners multiple peril | 2,978,727 | | 2,978,727 | | 708,626 | | 708,626 | | |
| 5. Commercial multiple peril | 44,565,943 | | 44,565,943 | | 23,046,599 | | 23,046,599 | | |
| 6. Mortgage guaranty | | | | | | | | | |
| 8. Ocean marine | | | | | | | | | |
| 9. Inland marine | 1,099,446 | | 1,099,446 | | 120,798 | | 120,798 | | |
| 10. Financial guaranty | | | | | | | | | |
| 11.1 Medical malpractice - occurrence | | | | | | | | | |
| 11.2 Medical malpractice - claims - made | | | | | | | | | |
| 12. Earthquake | | | | | | | | | |
| 13. Group accident and health | | | | | | | | (a) | |
| 14. Credit accident and health (group and individual) | | | | | | | | (a) | |
| 15. Other accident and health | | | | | | | | | |
| 16. Workers' compensation | 56,126,282 | | 56,126,282 | | 52,709,651 | | 52,709,651 | | |
| 17.1 Other liability - occurrence | 10,830,489 | | 10,830,489 | | 10,339,877 | | 10,339,877 | | |
| 17.2 Other liability - claims - made | | | | | | | | | |
| 18.1 Products liability - occurrence | 43,399 | | 43,399 | | 34,643 | | 34,643 | | |
| 18.2 Products liability - claims - made | | | | | | | | | |
| 19.1, 19.2 Private passenger auto liability | 585,748 | | 585,748 | | 1,988 | | 1,988 | | |
| 19.3, 19.4 Commercial auto liability | 31,354,076 | | 31,354,076 | | 18,026,311 | | 18,026,311 | | |
| 21. Auto physical damage | 526,797 | | 526,797 | | | | | | |
| 22. Aircraft (all perils) | | | | | | | | | |
| 23. Fidelity | | | | | | | | | |
| 24. Surety | | | | | | | | | |
| 26. Burglary and theft | | | | | 32 | | 32 | | |
| 27. Boiler and machinery | | | | | | | | | |
| 28. Credit | | | | | | | | | |
| 29. International | | | | | | | | | |
| 30. Reinsurance-Nonproportional Assumed Property | X X X | | | | X X X | | | | |
| 31. Reinsurance-Nonproportional Assumed Liability | X X X | | | | X X X | | | | |
| 32. Reinsurance-Nonproportional Assumed Financial Lines | X X X | | | | X X X | | | | |
| 33. Aggregate write-ins for other lines of business | | | | | | | | | |
| 34. TOTALS | 148,967,029 | | 148,967,029 | | 105,009,469 | | 105,009,469 | | |

| DETAILS OF WRITE-INS | | | | | | | | | |
|---|--|--|--|--|--|--|--|--|--|
| 3301. | | | | | | | | | |
| 3302. | | | | | | | | | |
| 3303. | | | | | | | | | |
| 3398. Summary of remaining write-ins for Line 33 from overflow page | | | | | | | | | |
| 3399. Totals (Lines 3301 through 3303 + 3398) (Line 33 above) | | | | | | | | | |

(a) Including \$ 0 for present value of life indemnity claims.

**UNDERWRITING AND INVESTMENT EXHIBIT
PART 3 - EXPENSES**

| | 1 Loss Adjustment Expenses | 2 Other Underwriting Expenses | 3 Investment Expenses | 4 Total |
|---|----------------------------------|--|-----------------------------|------------|
| 1. Claim adjustment services: | | | | |
| 1.1 Direct | 13,293,775 | | | 13,293,775 |
| 1.2 Reinsurance assumed | | | | |
| 1.3 Reinsurance ceded | 13,293,775 | | | 13,293,775 |
| 1.4 Net claim adjustment service (1.1 + 1.2 - 1.3) | | | | |
| 2. Commission and brokerage: | | | | |
| 2.1 Direct, excluding contingent | | 35,209,443 | | 35,209,443 |
| 2.2 Reinsurance assumed, excluding contingent | | | | |
| 2.3 Reinsurance ceded, excluding contingent | | 35,209,443 | | 35,209,443 |
| 2.4 Contingent-direct | | | | |
| 2.5 Contingent-reinsurance assumed | | | | |
| 2.6 Contingent-reinsurance ceded | | | | |
| 2.7 Policy and membership fees | | | | |
| 2.8 Net commission and brokerage (2.1 + 2.2 - 2.3 + 2.4 + 2.5 - 2.6 + 2.7) | | | | |
| 3. Allowances to manager and agents | | | | |
| 4. Advertising | | | 66 | 66 |
| 5. Boards, bureaus and associations | | | 1 | 1 |
| 6. Surveys and underwriting reports | | | 13 | 13 |
| 7. Audit of assureds' records | | | | |
| 8. Salary and related items: | | | | |
| 8.1 Salaries | | | 9,997 | 9,997 |
| 8.2 Payroll taxes | | | 468 | 468 |
| 9. Employee relations and welfare | | | 610 | 610 |
| 10. Insurance | | | 95 | 95 |
| 11. Directors' fees | | | | |
| 12. Travel and travel items | | | 166 | 166 |
| 13. Rent and rent items | | | 140 | 140 |
| 14. Equipment | | | 178 | 178 |
| 15. Cost or depreciation of EDP equipment and software | | | 54 | 54 |
| 16. Printing and stationery | | | 25 | 25 |
| 17. Postage, telephone and telegraph, exchange and express | | | 48 | 48 |
| 18. Legal and auditing | | | 1,335 | 1,335 |
| 19. Totals (Lines 3 to 18) | | | 13,196 | 13,196 |
| 20. Taxes, licenses and fees: | | | | |
| 20.1 State and local insurance taxes deducting guaranty association credits of \$ 0 | | | | |
| 20.2 Insurance department licenses and fees | | | | |
| 20.3 Gross guaranty association assessments | | | | |
| 20.4 All other (excluding federal and foreign income and real estate) | | | | |
| 20.5 Total taxes, licenses and fees (20.1 + 20.2 + 20.3 + 20.4) | | | | |
| 21. Real estate expenses | | | | |
| 22. Real estate taxes | | | | |
| 23. Reimbursements by uninsured plans | | | | |
| 24. Aggregate write-ins for miscellaneous expenses | | | 934 | 934 |
| 25. Total expenses incurred | | | 14,130 | 14,130 (a) |
| 26. Less unpaid expenses-current year | | | | |
| 27. Add unpaid expenses-prior year | | | | |
| 28. Amounts receivable relating to uninsured plans, prior year | | | | |
| 29. Amounts receivable relating to uninsured plans, current year | | | | |
| 30. TOTAL EXPENSES PAID (Lines 25 - 26 + 27 - 28 + 29) | | | 14,130 | 14,130 |

| DETAILS OF WRITE-INS | | | | |
|---|--|--|-----|-----|
| 2401. Other expenses | | | 934 | 934 |
| 2402. | | | | |
| 2403. | | | | |
| 2498. Summary of remaining write-ins for Line 24 from overflow page | | | | |
| 2499. Totals (Lines 2401 through 2403 plus 2498) (Line 24 above) | | | 934 | 934 |

(a) Includes management fees of \$ 14,130 to affiliates and \$ 0 to non-affiliates.

EXHIBIT OF NET INVESTMENT INCOME

| | 1 Collected During Year | 2 Earned During Year |
|---|-------------------------------|----------------------------|
| 1. U.S. Government bonds | (a) 1,335,229 | 1,288,145 |
| 1.1 Bonds exempt from U.S. tax | (a) | |
| 1.2 Other bonds (unaffiliated) | (a) 306,753 | 340,523 |
| 1.3 Bonds of affiliates | (a) | |
| 2.1 Preferred stocks (unaffiliated) | (b) | |
| 2.11 Preferred stocks of affiliates | (b) | |
| 2.2 Common stocks (unaffiliated) | | |
| 2.21 Common stocks of affiliates | | |
| 3. Mortgage loans | (c) | |
| 4. Real estate | (d) | |
| 5. Contract loans | | |
| 6. Cash, cash equivalents and short-term investments | (e) 275,665 | 267,860 |
| 7. Derivative instruments | (f) | |
| 8. Other invested assets | | |
| 9. Aggregate write-ins for investment income | (111) | (111) |
| 10. Total gross investment income | 1,917,536 | 1,896,417 |
| 11. Investment expenses | | (g) 14,130 |
| 12. Investment taxes, licenses and fees, excluding federal income taxes | | (g) |
| 13. Interest expense | | (h) |
| 14. Depreciation on real estate and other invested assets | | (i) |
| 15. Aggregate write-ins for deductions from investment income | | |
| 16. Total deductions (Lines 11 through 15) | | 14,130 |
| 17. Net investment income (Line 10 minus Line 16) | | 1,882,287 |
| DETAILS OF WRITE-INS | | |
| 0901. Miscellaneous Income (Expense) | (111) | (111) |
| 0902. | | |
| 0903. | | |
| 0998. Summary of remaining write-ins for Line 9 from overflow page | | |
| 0999. Totals (Lines 0901 through 0903) plus 0998 (Line 9, above) | (111) | (111) |
| 1501. | | |
| 1502. | | |
| 1503. | | |
| 1598. Summary of remaining write-ins for Line 15 from overflow page | | |
| 1599. Totals (Lines 1501 through 1503) plus 1598 (Line 15, above) | | |

- (a) Includes \$ 43,779 accrual of discount less \$ 56,820 amortization of premium and less \$ 6,167 paid for accrued interest on purchases.
- (b) Includes \$ 0 accrual of discount less \$ 0 amortization of premium and less \$ 0 paid for accrued dividends on purchases.
- (c) Includes \$ 0 accrual of discount less \$ 0 amortization of premium and less \$ 0 paid for accrued interest on purchases.
- (d) Includes \$ 0 for company's occupancy of its own buildings; and excludes \$ 0 interest on encumbrances.
- (e) Includes \$ 46,670 accrual of discount less \$ 361 amortization of premium and less \$ 27,616 paid for accrued interest on purchases.
- (f) Includes \$ 0 accrual of discount less \$ 0 amortization of premium.
- (g) Includes \$ 0 investment expenses and \$ 0 investment taxes, licenses and fees, excluding federal income taxes, attributable to segregated and Separate Accounts.
- (h) Includes \$ 0 interest on surplus notes and \$ 0 interest on capital notes.
- (i) Includes \$ 0 depreciation on real estate and \$ 0 depreciation on other invested assets.

EXHIBIT OF CAPITAL GAINS (LOSSES)

| | 1 Realized Gain (Loss) On Sales or Maturity | 2 Other Realized Adjustments | 3 Total Realized Capital Gain (Loss) (Columns 1 + 2) | 4 Change in Unrealized Capital Gain (Loss) | 5 Change in Unrealized Foreign Exchange Capital Gain (Loss) |
|--|---|---------------------------------------|---|---|---|
| 1. U.S. Government bonds | | | | | |
| 1.1 Bonds exempt from U.S. tax | | | | | |
| 1.2 Other bonds (unaffiliated) | | | | | |
| 1.3 Bonds of affiliates | | | | | |
| 2.1 Preferred stocks (unaffiliated) | | | | | |
| 2.11 Preferred stocks of affiliates | | | | | |
| 2.2 Common stocks (unaffiliated) | | | | | |
| 2.21 Common stocks of affiliates | | | | | |
| 3. Mortgage loans | | | | | |
| 4. Real estate | | | | | |
| 5. Contract loans | | | | | |
| 6. Cash, cash equivalents and short-term investments | | | | | |
| 7. Derivative instruments | | | | | |
| 8. Other invested assets | | | | | |
| 9. Aggregate write-ins for capital gains (losses) | | | | | |
| 10. Total capital gains (losses) | | | | | |

NONE

| DETAILS OF WRITE-INS | | | | | |
|--|--|--|--|--|--|
| 0901. | | | | | |
| 0902. | | | | | |
| 0903. | | | | | |
| 0998. Summary of remaining write-ins for Line 9 from overflow page | | | | | |
| 0999. Totals (Lines 0901 through 0903) plus 0998 (Line 9, above) | | | | | |

EXHIBIT OF NONADMITTED ASSETS

| | 1 | 2 | 3 |
|--|--|--|--|
| | Current Year Total Nonadmitted Assets | Prior Year Total Nonadmitted Assets | Change in Total Nonadmitted Assets (Col. 2 - Col. 1) |
| 1. Bonds (Schedule D) | | | |
| 2. Stocks (Schedule D): | | | |
| 2.1 Preferred stocks | | | |
| 2.2 Common stocks | | | |
| 3. Mortgage loans on real estate (Schedule B): | | | |
| 3.1 First liens | | | |
| 3.2 Other than first liens | | | |
| 4. Real estate (Schedule A): | | | |
| 4.1 Properties occupied by the company | | | |
| 4.2 Properties held for the production of income | | | |
| 4.3 Properties held for sale | | | |
| 5. Cash (Schedule E-Part 1), cash equivalents (Schedule E-Part 2) and short-term investments (Schedule DA) | | | |
| 6. Contract loans | | | |
| 7. Other invested assets (Schedule BA) | | | |
| 8. Receivables for securities | | | |
| 9. Aggregate write-ins for invested assets | | | |
| 10. Subtotals, cash and invested assets (Lines 1 to 9) | | | |
| 11. Title plants (for Title insurers only) | | | |
| 12. Investment income due and accrued | | | |
| 13. Premiums and considerations: | | | |
| 13.1 Uncollected premiums and agents' balances in the course of collection | | | |
| 13.2 Deferred premiums, agents' balances and installments booked but deferred and not yet due | | | |
| 13.3 Accrued retrospective premiums | | | |
| 14. Reinsurance: | | | |
| 14.1 Amounts recoverable from reinsurers | | | |
| 14.2 Funds held by or deposited with reinsured companies | | | |
| 14.3 Other amounts receivable under reinsurance contracts | | | |
| 15. Amounts receivable relating to uninsured plans | | | |
| 16.1 Current federal and foreign income tax recoverable and interest thereon | | | |
| 16.2 Net deferred tax asset | | 1,127,900 | 1,127,900 |
| 17. Guaranty funds receivable or on deposit | | | |
| 18. Electronic data processing equipment and software | | | |
| 19. Furniture and equipment, including health care delivery assets | | | |
| 20. Net adjustment in assets and liabilities due to foreign exchange rates | | | |
| 21. Receivables from parent, subsidiaries and affiliates | | | |
| 22. Health care and other amounts receivable | | | |
| 23. Aggregate write-ins for other than invested assets | | 132 | 132 |
| 24. Total assets excluding Separate Accounts, Segregated Accounts and Protected Cell Accounts (Lines 10 to 23) | | 1,128,032 | 1,128,032 |
| 25. From Separate Accounts, Segregated Accounts and Protected Cell Accounts | | | |
| 26. Total (Lines 24 and 25) | | 1,128,032 | 1,128,032 |

| DETAILS OF WRITE-INS | | | |
|---|--|-----|-----|
| 0901. | | | |
| 0902. | | | |
| 0903. | | | |
| 0998. Summary of remaining write-ins for Line 09 from overflow page | | | |
| 0999. Totals (Lines 0901 through 0903 plus 0998) (Line 09 above) | | | |
| 2301. Other assets | | 132 | 132 |
| 2302. | | | |
| 2303. | | | |
| 2398. Summary of remaining write-ins for Line 23 from overflow page | | | |
| 2399. Totals (Lines 2301 through 2303 plus 2398) (Line 23 above) | | 132 | 132 |

NOTES TO FINANCIAL STATEMENTS

Note 1- Summary of Significant Accounting Policies

A. Accounting Practices

Effective January 1, 2001, and subject to any deviations prescribed or permitted by the State of New Hampshire, the accompanying financial statements of Excelsior Insurance Company (the "Company") have been prepared in conformity with the National Association of Insurance Commissioners ("NAIC") *Accounting Practices and Procedures Manual* ("APP Manual").

B. Use of Estimates in the Preparation of the Financial Statements

The preparation of financial statements requires management to make estimates and assumptions that affect the reported amounts of assets, liabilities, revenues, and expenses. It also requires estimates in the disclosure of contingent assets and liabilities. Actual results could differ from these estimates.

C. Accounting Policies

Premiums are earned over the terms of the related policies and reinsurance contracts. Unearned premium reserves are established to cover the unexpired portion of premiums written. Such reserves are computed by pro-rata methods. Expenses incurred in connection with acquiring new insurance business, including acquisition costs such as sales commissions, are charged to operations as incurred. Expenses incurred are reduced for ceding allowances received or receivable.

In addition, the Company uses the following accounting policies:

1. Short term investments are carried at cost adjusted, where appropriate, for amortization of premium or discount, or market as specified by the Purposes and Procedures Manual of the NAIC Securities Valuation Office ("SVO Manual").
2. Bonds are carried at cost adjusted, where appropriate, for amortization of premium or discount, or market as specified by the SVO Manual.
3. The Company does not own common stocks.
4. The Company does not own preferred stocks.
5. The Company does not own mortgage loans.
6. Mortgage-backed/asset backed securities are stated at amortized cost or market based on guidance in the SVO Manual. Prepayment assumptions for mortgage backed/asset backed securities are updated monthly using the Bloomberg data service. The retrospective adjustment method is used to value all mortgage backed/asset backed securities.
7. The Company does not own any subsidiaries, controlled, or affiliated entities.
8. The Company does not own any joint ventures, partnerships or limited liability companies.
9. Derivative Securities, refer to Note 8.
10. Refer to Note 29.
11. Unpaid losses and loss adjustment expenses include an amount determined from individual case estimates and loss reports and an amount, based on past experience, for losses incurred but not reported. Such liabilities are necessarily based on assumptions and estimates, and while management believes the amount is adequate, the ultimate liability may be in excess of or less than the amount provided. The methods for making such estimates and for establishing the resulting liability are continually reviewed and follow current standards of practice. Any adjustments to the liability are reflected in the period that they are determined.
12. The Company did not change its capitalization policy in 2007.
13. The Company has no pharmaceutical rebate receivables.

Note 2- Accounting Changes and Correction of Errors

- A. There were no material changes in accounting principles or corrections of errors during the year.

Note 3- Business Combinations and Goodwill

A. Statutory Purchase Method

The Company did not enter into any statutory purchases during the year.

B. Statutory Mergers

The Company did not enter into any statutory mergers during the year.

C. Impairment Loss

Not applicable

NOTES TO FINANCIAL STATEMENTS

Note 4- Discontinued Operations

The Company has no discontinued operations to report.

Note 5- Investments

A. Mortgage Loans, including Mezzanine Real Estate Loans

The Company has no mortgage loans.

B. Troubled Debt Restructuring for Creditors

Not applicable

C. Reverse Mortgages

The Company has no reverse mortgages.

D. Loan-Backed Securities

1. The Company elected to use the book value as of January 1, 1994 as the cost for applying the retrospective adjustment method to securities purchased prior to that date, where historical cash flows are not readily available.
2. Prepayment speed assumptions are updated monthly with data sourced from the Bloomberg data service.
3. The Company had no negative yield situations requiring a change from the retrospective to prospective method.

E. Repurchase Agreements

The Company did not enter into any repurchase agreements during the year.

F. Real Estate

The Company does not own real estate.

G. Investments in Low-Income Housing Tax Credits

The Company does not hold investments in low-income housing tax credits.

Note 6- Joint Ventures, Partnerships & Limited Liability Companies

A. The Company has no investments in joint ventures, partnerships, or limited liability companies.

B. Impairments on joint ventures, partnerships, and limited liability companies.

Not Applicable

Note 7- Investment Income

A. Accrued Investment Income

All investment income due and accrued over 90 days past due is excluded from Surplus.

B. Amounts Nonadmitted

No amounts were excluded as of December 31, 2007.

Note 8- Derivative Instruments

The Company's investment activities do not include derivatives. However, the Company may acquire derivatives as additions to bond, common stock, or preferred stock investments. These derivatives are ancillary to the overall investment and are immaterial to the underlying investment portfolio.

Note 9 - Income Taxes

A. The components of the net deferred tax assets and liabilities recognized in the Company's Assets, Liabilities, Surplus and Other Funds are as follows:

| | December 31, 2007 | December 31, 2006 | Change |
|-------------------------------------|-------------------|-------------------|-----------|
| Total of gross deferred tax assets | 1,033,000 | 1,855,000 | (822,000) |
| Total of deferred tax liabilities | (136,000) | (263,000) | 127,000 |
| Net deferred tax asset | 897,000 | 1,592,000 | (695,000) |
| Net deferred tax asset non-admitted | 0 | (1,127,900) | 1,127,900 |
| Net admitted deferred tax asset | 897,000 | 464,100 | 432,900 |

B. The Company does not have any deferred tax liabilities described in SSAP No. 10, Income Taxes, paragraph 6d.

NOTES TO FINANCIAL STATEMENTS

C. The provisions for incurred taxes on earnings for the years ended December 31 are:

| | 2007 | 2006 |
|-----------------------------------|---------|---------|
| Federal tax on operations | 422,550 | 411,610 |
| Net operating loss benefit | 0 | 0 |
| Foreign tax on operations | 0 | 0 |
| Income tax incurred on operations | 422,550 | 411,610 |
| Tax on capital gains | 0 | 27,536 |
| Total income tax incurred | 422,550 | 439,146 |

The Company's deferred tax assets and liabilities result primarily from investment impairments and deferred intercompany transactions.

The change in deferred income taxes is comprised of the following:

| | 2007 |
|---|-----------|
| Change in net deferred income tax (without unrealized gain or loss) | (695,000) |
| Tax effect of unrealized (gains) losses | 0 |
| Total change in net deferred income tax | (695,000) |

D. Effective tax rates differ from the current statutory rate of 35% principally due to the effects of goodwill.

E. The amount of Federal income taxes paid and available for recoupment in the event of future losses is none from the current year and \$329,000 from the preceding year.

The Company has no net loss carryforward available to offset future net income subject to Federal income taxes.

F. The Company's Federal income tax return is consolidated with the following entities:

| | |
|---|--|
| Access Insurance Services, Co. | Liberty Mutual Group Inc. |
| Ambco Capital Corporation | Liberty Mutual Holding Company, Inc. |
| America First Insurance Company | Liberty Mutual Insurance Company |
| America First Lloyds Insurance Company | Liberty Mutual Managed Care, Inc. |
| American Ambassador Casualty Company | Liberty Mutual Personal Insurance Company |
| American Fire & Casualty Insurance Company * | Liberty Northwest Insurance Corporation |
| Avomark Insurance Company * | Liberty Personal Insurance Company |
| Berkeley Holding Company Associates, Inc. | Liberty RE (Bermuda) Limited |
| Berkeley Management Corporation | Liberty Real Estate Corporation |
| Bridgefield Casualty Insurance Company | Liberty Sponsored Insurance (Vermont) Inc. |
| Bridgefield Employers Insurance Company | Liberty Surplus Insurance Corporation |
| Capitol Agency, Inc. (Arizona corporation) | Liberty-USA Corporation |
| Capitol Agency, Inc. (Ohio corporation) | LIH-Re of America Corporation |
| Capitol Agency, Inc. (Tennessee corporation) | LIH U.S. P&C Corporation |
| Cascade Disability Management, Inc. | LIIA Insurance Agency, Inc. |
| Colorado Casualty Insurance Company | LIU Specialty Insurance Agency, Inc. |
| Companies Agency Insurance Services of California | LLS Insurance Agency of Nevada, Inc. |
| Companies Agency of Alabama, Inc. | LM General Insurance Company |
| Companies Agency of Georgia, Inc. | LM Insurance Corporation |
| Companies Agency of Kentucky, Inc. | LM Personal Insurance Company |
| Companies Agency of Massachusetts, Inc. | LM Property & Casualty Insurance Company |
| Companies Agency of Michigan, Inc. | LMHC Massachusetts Holding, Inc. |
| Companies Agency of New York, Inc. | LRE Properties, Inc. |
| Companies Agency of Pennsylvania, Inc. | Mid-American Agency, Inc. |
| Companies Agency of Phoenix, Inc. | Mid-American Fire and Casualty Company |
| Consolidated Insurance Company | Missouri Agency, Inc. |
| Copley Venture Capital, Inc. | North Pacific Insurance Company |
| Countrywide Services Corporation | Oregon Automobile Insurance Company |
| Diversified Settlements, Inc. | OCASCO Budget, Inc * |
| Employers Insurance Company of Wausau | OCI Printing, Inc.* |
| Excelsior Insurance Company | Ohio Casualty Corporation * |
| Florida State Agency, Inc. | Ohio Casualty Insurance Company * |
| Globe American Casualty Company | Ohio Casualty of New Jersey, Inc * |
| Golden Eagle Insurance Corporation | Ohio Life Brokerage Services, Inc.* |
| Gulf States AIF, Inc. | Ohio Security Insurance Company * |
| Hawkeye-Security Insurance Company | Peerless Indemnity Insurance Company |
| Helmsman Insurance Agency of Illinois, Inc. | Peerless Insurance Company |
| Helmsman Insurance Agency of Texas, Inc. | San Diego Insurance Company |
| Heritage-Summit Healthcare of Florida, Inc. | State Agency, Inc. (Indiana corporation) |
| Indiana Insurance Company | State Agency, Inc. (Wisconsin corporation) |
| LEXCO Limited | St. James Insurance Company |
| Liberty Assignment Corporation | Summit Consulting, Inc. |
| Liberty Energy Canada, Inc. * | Summit Consulting, Inc. of Louisiana |
| Liberty Financial Services, Inc. | Summit Holding Southeast, Inc. |
| Liberty Hospitality Group, Inc. | The First Liberty Insurance Corporation |
| Liberty Insurance Company of America | The Midwestern Indemnity Company |
| Liberty Insurance Corporation | The National Corporation |
| Liberty Insurance Holdings, Inc. | The Netherlands Insurance Company |

NOTES TO FINANCIAL STATEMENTS

Liberty Insurance Underwriters, Inc.
 Liberty Life Assurance Company of Boston
 Liberty Life Holdings, Inc.
 Liberty Lloyds of Texas Insurance Company
 Liberty Management Services, Inc.
 Liberty Mexico Holdings, Inc.
 Liberty Mutual Fire Insurance Company

Wausau Service Corporation
 Wausau Signature Agency, Inc.
 Wausau Business Insurance Company
 Wausau General Insurance Company
 Wausau Underwriters Insurance Company
 West American Insurance Company *

* This company joined the consolidated group in 2007 and its activity from the date it joined the group is included in the consolidated return.

The method of federal income tax allocation is subject to a written agreement. Allocation is based upon separate return calculations with credit applied for losses as appropriate. The Company has the enforceable right to recoup prior year payments in the event of future losses.

Note 10- Information concerning Parent, Subsidiaries and Affiliates

- A. All outstanding shares in the Company are owned by Peerless Insurance Company ("PIC"), an insurance company incorporated in the State of New Hampshire. PIC is a wholly owned subsidiary of LIH US P&C Corporation, an insurance holding company incorporated in Delaware. LIH US P&C Corporation is wholly owned by Liberty Insurance Holdings, Inc., an insurance holding company incorporated in Delaware. Liberty Insurance Holdings, Inc. is wholly owned by Liberty Mutual Insurance Company ("LMIC"), an insurance company incorporated in Massachusetts. The ultimate parent of LMIC is Liberty Mutual Holding Company, Inc., a Massachusetts company.
- B. Transactions entered into by the Company with its affiliates are described on Schedule Y Part 2.
- C. Refer to Notes 10 F and 25.
- D. At December 31, 2007, the Company reported \$310,623 due to affiliates. In general, the terms of the intercompany arrangements require settlement at least quarterly.
- E. The Company has made no guarantee or initiated undertaking for the benefit of affiliates which result in a material contingent exposure of the Company's or affiliates' assets or liabilities.
- F. Refer to Note 25 for information regarding the Amended and Restated Reinsurance Pooling Agreement.

The Company entered into a services agreement (the "Agreement"), effective January 1, 1999, with Peerless Insurance Company ("PIC") and other affiliates. The Agreement allows parties to the Agreement to provide services related to common management functions including, but not limited to, coordinating marketing and advertising, information systems support, payroll and human resources services, actuarial support, accounting and other financial services, as well as consulting and other services as the parties may request.

The Company entered into investment management agreements, effective January 1, 2007 with LMIC, and effective May 1, 2000 with Liberty Mutual Investment Advisors LLC (LMIA). Under these agreements, LMIC and LMIA provide investment management services to the Company.

The Company entered into a cash management agreement with LMIA effective January 28, 2000.

The Company entered into a Federal Tax Sharing Agreement between LMIC and affiliates (see Note 9F).

The Company entered into a management services agreement, effective December 15, 2001, with LMIC. Under the agreement, LMIC may provide services related to common management functions including, but not limited to, accounting, financial, tax and auditing, information technology and support, purchasing, payroll and employee benefits, policy administration, real estate management, legal, general administration, as well as consulting and other services as the parties may request.

- G. The Company is part of a holding company structure as illustrated in Schedule Y Part 1.
- H. The Company does not own shares of an upstream company, either directly or indirectly.
- I. The Company has no investments in subsidiary, controlled or affiliated companies.
- J. Impairment of subsidiaries
 Refer to 10 I
- K. Investment in foreign insurance subsidiaries.
 Refer to 10 I
- L. Investment in downstream noninsurance holding companies.
 Refer to 10 I

Note 11- Debt

- A. Capital Notes
 Not applicable

NOTES TO FINANCIAL STATEMENTS

B. All Other Debt

Not applicable

Note 12- Retirement Plans, Deferred Compensation, Postemployment Benefits and Compensated Absences and Other Postretirement Benefit Plans

The Company does not have any direct employees and therefore, does not have any direct obligations for a defined benefit plan, deferred compensation arrangements, compensated absences or other post retirement benefit plans. Services for the operation of the Company are provided under provisions of the Management Services Agreements as described in note 10 F.

Note 13- Capital and Surplus, Shareholders' Dividend Restrictions and Quasi-Reorganizations

1. Common Stock

The Company has 50,000 shares authorized, and 38,000 shares issued and outstanding as of December 31, 2007. All shares have a stated par value of \$100.

2. Preferred Stock

Not applicable

3. Dividend Restrictions

There are no dividend restrictions.

4. The maximum amount of dividends that can be paid by New Hampshire-domiciled insurance companies to shareholders without prior approval of the Insurance Commissioner is 10% of policyholder surplus less any dividends paid in the preceding twelve months. The maximum dividend payout that may be made without prior approval in 2008 is \$4,294,189.

5. The Company does not have restricted unassigned surplus.

6. The Company had no advances to surplus.

7. The Company did not hold stock for special purposes.

8. The Company does not hold special surplus funds.

9. The portion of unassigned funds (surplus) represented by cumulative unrealized gains and (losses) is \$0.

10. Surplus Notes

Not applicable

11. Quasi re-organization (dollar impact)

Not applicable

12. Quasi re-organization (effective date)

Not applicable

13. The company did not pay a dividend to its parent during 2007.

Note 14- Contingencies

A. Contingent Commitments

The Company has no commitments or contingent commitments to affiliates or other entities as indicated in Note 10 E. The Company has made no guarantees on behalf of affiliates.

B. Assessments

The Company is subject to guaranty funds and other assessments by the states in which it writes business. Guaranty fund assessments are accrued at the time of insolvencies. Other assessments are accrued either at the time of assessments or in the case of premium based assessments, at the time the premiums are written, or, in the case of loss based assessments, at the time the losses are incurred.

As a result of an inter-company reinsurance arrangement (see Note 25), all guaranty fund and other assessments liabilities are ceded to Peerless Insurance Company.

C. Gain Contingencies

Not applicable

D. Claims related extra contractual obligations and bad faith losses stemming from lawsuits

NOTES TO FINANCIAL STATEMENTS

The company did not have claims related extra contractual obligation losses and bad faith losses stemming from lawsuits in the current period.

E. All other Contingencies

Lawsuits arise against the Company in the normal course of business. Contingent liabilities arising from litigation, income taxes, and other matters are not considered material in relation to the financial position of the Company.

As disclosed in Note 9 F, the Company is a member of a controlled group for federal income tax purposes, and that group includes Liberty Mutual Group Inc. ("LMGI"). LMGI is the plan sponsor of the Liberty Mutual Retirement Benefit Plan, a qualified plan under federal law. Pursuant to federal law, if LMGI has not made the minimum required contributions with respect to the Liberty Mutual Retirement Benefit Plan, the Company, jointly and severally with all other members of the controlled group, would be contingently liable to make such contributions.

Note 15- Leases

A. The Company is not involved in material lease obligations.

B. Leasing as a significant part of lessor's business activities

Not applicable

Note 16- Information about Financial Instruments with Off-Balance Sheet Risk and Financial Instruments with Concentrations of Credit Risk

The Company is not exposed to financial instruments with off-balance sheet risk or with concentrations of credit risk.

Note 17- Sale, Transfer and Servicing of Financial Assets and Extinguishments of Liabilities

A. Transfers of Receivables reported as sales

The Company did not have any transfers of receivables reported as sales during the year.

B. Transfers and servicing of financial assets

The Company did not have any transfers and servicing of financial assets during the year.

C. Wash Sales

The company did not have any wash sale transactions during the year

Note 18-Gain or Loss from Uninsured Accident and Health Plans and the Uninsured Portion of Partially Insured Plans

A. Administrative Services Only (ASO) Plans

Not applicable

B. Administrative Services Contract (ASC) Plans

Not applicable

C. Medicare or Other Similarly Structured Cost Based Reimbursement Contracts

Not applicable

Note 19- Direct Premium Written/Produced by Managing General Agents/ Third Party Administrators

The Company has no direct premiums written through managing general agents or third party administrators.

Note 20- Other Items

A. The Company has no extraordinary items to report.

B. Troubled Debt Restructuring for Debtors

Not applicable

C. Other Disclosures

1) Assets in the amount of \$2,595,933 and \$2,603,574 as of December 31, 2007 and 2006, respectively, were on deposit with government authorities or trustees as required by law.

D. As a result of the PIC Amended and Restated Reinsurance Pooling Agreement (see Note 25), the Company has no net exposure to uncollectible premium receivable balances.

E. Business Interruption Insurance Recoveries

NOTES TO FINANCIAL STATEMENTS

The Company does not purchase business interruption coverage.

F. State Transferable Tax Credits

The Company does not hold state transferable tax credits.

G. Hybrid Securities

The Company does not hold hybrid securities.

H. The Company does not have deposits admitted under section 6603 of the Internal Revenue Services Code.

I. The Company does not have exposure to sub-prime mortgage related risk.

Note 21- Events Subsequent

There were no events subsequent to December 31, 2007 that would require disclosure.

Note 22- Reinsurance

A. Excluding amounts arising pursuant to PIC Amended and Restated Reinsurance Pooling Agreement, as described in Note 25, there are no unsecured reinsurance recoverables with an individual reinsurer that exceed 3% of policyholders surplus.

B. There are no reinsurance recoverables in dispute from an individual reinsurer that exceed 5% of the Company's surplus. In addition, the aggregate reinsurance recoverables in dispute do not exceed 10% of the Company's surplus.

C. Reinsurance Assumed & Ceded

1. The following table sets forth the maximum return premium and commission equity due the reinsurer or the Company if all of the Company's assumed and ceded reinsurance were canceled as of December 31, 2007.

| | <u>Assumed Reinsurance</u> | | <u>Ceded Reinsurance</u> | | <u>Net Reinsurance</u> | |
|--------------|----------------------------|--------------------------|--------------------------|--------------------------|------------------------|--------------------------|
| | <u>UEP</u> | <u>Commission Equity</u> | <u>UEP</u> | <u>Commission Equity</u> | <u>UEP</u> | <u>Commission Equity</u> |
| Affiliates | \$0 | \$0 | \$123,497,589 | \$12,447,330 | \$(123,497,589) | \$(12,447,330) |
| All Other | 0 | 0 | 0 | 0 | 0 | 0 |
| Total | \$0 | \$0 | \$123,497,589 | \$12,447,330 | \$(123,497,589) | \$(12,447,330) |

Direct unearned premium reserve of \$123,497,589

2. There are no sliding scale adjustments, or other profit sharing commissions for direct, assumed or ceded business.

D. The Company did not write off any uncollectible balances in 2007.

E. The Company does not have ceded commutations.

F. The Company does not have any retroactive reinsurance agreements.

G. The Company has not entered into any deposit type reinsurance agreements as of December 31, 2007.

Note 23 - Retrospectively Rated Contracts and Contracts Subject to Redetermination

The Company does not have net accrued retrospective premiums (See Note 25).

Note 24 - Changes in Incurred Losses and Loss Adjustment Expenses

The Company has no net exposure to changes in incurred losses and loss adjustment expenses (see Note 25).

Note 25- Intercompany Pooling Arrangements

The Company is a member of the PIC Amended and Restated Reinsurance Pooling Agreement consisting of the following affiliated companies:

| | | <u>NAIC</u> | <u>Pooling</u> | <u>Lines of</u> |
|----------------------------|---|--------------|----------------|--------------------------|
| | | <u>Co. #</u> | <u>%</u> | <u>Business</u> |
| Lead Company | Peerless Insurance Company (PIC) | 24198 | 70.93% | All Lines |
| Affiliated Pool Companies: | Peerless Indemnity Insurance Company (PIIC) | 18333 | 0.30% | All Lines |
| | Golden Eagle Insurance Corporation (GEIC) | 10836 | 13.25% | All Lines (Except WC) |
| | Indiana Insurance Company (IIC) | 22659 | 12.25% | All Lines |
| | The Netherlands Insurance Company (NIC) | 24171 | 3.27% | All Lines |
| | American Ambassador Casualty Company (AACC) | 10073 | 0.00% | All Lines |
| | America First Insurance Company (AFIC) | 12696 | 0.00% | All Lines |
| | America First Lloyd's Insurance Company (AFLIC) | 11526 | 0.00% | All Lines |

NOTES TO FINANCIAL STATEMENTS

| | | | | |
|---|--|-------|---------|-----------|
| | Colorado Casualty Insurance Company (CCIC) | 41785 | 0.00% | All Lines |
| | Consolidated Insurance Company (CIC) | 22640 | 0.00% | All Lines |
| | Excelsior Insurance Company (EIC) | 11045 | 0.00% | All Lines |
| | Globe American Casualty Company (GACC) | 11312 | 0.00% | All Lines |
| | Hawkeye-Security Insurance Company (HSIC) | 36919 | 0.00% | All Lines |
| | Liberty Mutual Mid-Atlantic Insurance Company (fka Merchants & Business Men's Mutual Insurance Company) (LMMAIC) | 14486 | 0.00% | All Lines |
| | Mid-American Fire & Casualty Company (MAFCC) | 23507 | 0.00% | All Lines |
| | Montgomery Mutual Insurance Company (MMC) | 14613 | 0.00% | All Lines |
| | The Midwestern Indemnity Insurance Company (MWIC) | 23515 | 0.00% | All Lines |
| | | | 100.00% | |
| 100% Quota Share Affiliated Companies: | Liberty Northwest Insurance Corporation (LNW) | 41939 | 0.00% | All Lines |
| | National Insurance Association (NIA) | 27944 | 0.00% | All Lines |
| | North Pacific Insurance Company (NPIC) | 23892 | 0.00% | All Lines |
| | Oregon Automobile Insurance Company (OAIC) | 23922 | 0.00% | All Lines |

Under the terms of the Reinsurance Agreements, the sequence of transactions is as follows:

- (a) Each Affiliated Pool Company cedes its net underwriting activity to the Lead Company.
- (b) Each 100% Quota Share Affiliated Company cedes its net underwriting activity to the Lead Company.
- (c) After recording the assumed affiliate transactions noted above, the Lead Company records 100% of its external assumed and ceded reinsurance activity.
- (d) The Lead Company's remaining underwriting activity, after processing all internal and external reinsurance is retroceded to the pool members in accordance with each company's pool participation percentage, as noted above.
- (e) There were no members that are parties to reinsurance agreements with non-affiliated reinsurers covering business subject to the pooling agreement that have a contractual right of direct recovery from the non-affiliated reinsurer per the terms of such reinsurance agreements.
- (f) There were no discrepancies between entries regarding pooled business on the assumed and ceded reinsurance schedules of the Lead Company and corresponding entries on the assumed and ceded reinsurance schedules of other pooled participants.
- (g) The write-off of uncollectible reinsurance is pooled and the Provision for Reinsurance is recognized by the entity placing the outbound external reinsurance.

Subject to the approval of the appropriate state insurance departments, effective January 1, 2008, the PIC Amended and Restated Reinsurance Pooling Agreement was amended to adjust pooling percentages and add the affiliates noted below. Concurrently, each company noted below terminated their existing inter-company reinsurance agreements.

American Fire and Casualty Company
Avomark Insurance Company
National Insurance Association
Ohio Casualty of New Jersey, Inc.
Ohio Security Insurance Company
The Ohio Casualty Insurance Company
West American Insurance Company

Effective January 1, 2008 Bridgefield Employers Insurance Company and Bridgefield Casualty Insurance Company novated their 100% quota share agreements with Liberty Mutual Insurance Company to substitute PIC as the reinsurer.

Therefore, effective January 1, 2008, the PIC Amended and Restated Reinsurance Pooling Agreement consisted of the following affiliated companies:

| | | <u>NAIC</u> <u>Co. #</u> | <u>Pooling</u> <u>%</u> | <u>Lines of</u> <u>Business</u> |
|-------------------------------|---|-----------------------------|----------------------------|------------------------------------|
| Lead Company | Peerless Insurance Company (PIC) | 24198 | 42.00% | All Lines |
| Affiliated Pool Companies: | Peerless Indemnity Insurance Company (PIIC) | 18333 | 5.00% | All Lines |
| | Golden Eagle Insurance Corporation (GEIC) | 10836 | 7.00% | All Lines (Except WC) |
| | Indiana Insurance Company (IIC) | 22659 | 8.00% | All Lines |
| | The Netherlands Insurance Company (NIC) | 24171 | 3.00% | All Lines |
| | American Fire and Casualty Company (AFCC) | 24066 | 1.00% | All Lines |
| | The Ohio Casualty Insurance Company (OCIC) | 24074 | 34.00% | All Lines |
| | Avomark Insurance Company (AIC) | 10798 | 0.00% | All Lines |
| | American Ambassador Casualty Company (AACC) | 10073 | 0.00% | All Lines |
| | America First Insurance Company (AFIC) | 12696 | 0.00% | All Lines |
| | America First Lloyd's Insurance Company (AFLIC) | 11526 | 0.00% | All Lines |

NOTES TO FINANCIAL STATEMENTS

| | | | | |
|-----------------------|--|-------|---------|-----------|
| | Colorado Casualty Insurance Company (CCIC) | 41785 | 0.00% | All Lines |
| | Consolidated Insurance Company (CIC) | 22640 | 0.00% | All Lines |
| | Excelsior Insurance Company (EIC) | 11045 | 0.00% | All Lines |
| | Globe American Casualty Company (GACC) | 11312 | 0.00% | All Lines |
| | Hawkeye-Security Insurance Company (HSIC) | 36919 | 0.00% | All Lines |
| | Liberty Mutual Mid-Atlantic Insurance Company (LMMAIC) | 14486 | 0.00% | All Lines |
| | Mid-American Fire & Casualty Company (MAFCC) | 23507 | 0.00% | All Lines |
| | Montgomery Mutual Insurance Company (MMC) | 14613 | 0.00% | All Lines |
| | The Midwestern Indemnity Insurance Company (MWIC) | 23515 | 0.00% | All Lines |
| | National Insurance Association (NIA) | 27944 | 0.00% | All Lines |
| | Ohio Casualty of New Jersey, Inc. (OCNJ) | 10937 | 0.00% | All Lines |
| | Ohio Security Insurance Company (OSIC) | 24082 | 0.00% | All Lines |
| | West American Insurance Company (WAIC) | 44393 | 0.00% | All Lines |
| | | | 100.00% | |
| 100% Quota Share | | | | |
| Affiliated Companies: | Liberty Northwest Insurance Corporation (LNW) | 41939 | 0.00% | All Lines |
| | Bridgefield Casualty Insurance Company (BEIC) | 10335 | 0.00% | All Lines |
| | Bridgefield Employers Insurance Company (BEIC) | 10701 | 0.00% | All Lines |
| | North Pacific Insurance Company (NPIC) | 23892 | 0.00% | All Lines |
| | Oregon Automobile Insurance Company (OAIC) | 23922 | 0.00% | All Lines |

Note 26- Structured Settlements

- A. The Company has no net exposure to contingent liabilities from the purchase of annuities (see Note 25).
- B. Not applicable

Note 27 - Health Care Receivables

Not applicable

Note 28 - Participating Policies

Not applicable

Note 29 - Premium Deficiency Reserves

The Company has no net exposure to liabilities related to premium deficiency reserves (see Note 25).

Note 30- High Dollar Deductible Policies

As a result of the Company's participation in the PIC Amended and Restated Pooling Agreement (see Note 25), the Company does not have any net high dollar deductible policy liabilities.

Note 31- Discounting of Liabilities for Unpaid Losses and Unpaid Loss Adjustment Expenses

Not applicable

Note 32 - Asbestos/Environmental Reserves

The Company has no net exposure to asbestos and environmental claims (see Note 25).

Note 33- Subscriber Savings Accounts

The Company is not a reciprocal insurance company.

Note 34 - Multiple Peril Crop Insurance

Not applicable

SUMMARY INVESTMENT SCHEDULE

| Investment Categories | Gross Investment Holdings | | Admitted Assets as Reported in the Annual Statement | |
|---|---------------------------|-----------------|---|-----------------|
| | 1 Amount | 2 Percentage | 3 Amount | 4 Percentage |
| 1. Bonds: | | | | |
| 1.1 U.S. treasury securities | 23,646,683 | 56.593 | 23,646,683 | 56.593 |
| 1.2 U.S. government agency obligations (excluding mortgage-backed securities): | | | | |
| 1.21 Issued by U.S. government agencies | 4,177,890 | 9.999 | 4,177,890 | 9.999 |
| 1.22 Issued by U.S. government sponsored agencies | | | | |
| 1.3 Foreign government (including Canada, excluding mortgage-backed securities) | | | | |
| 1.4 Securities issued by states, territories, and possessions and political subdivisions in the U.S.: | | | | |
| 1.41 States, territories and possessions general obligations | | | | |
| 1.42 Political subdivisions of states, territories and possessions and political subdivisions general obligations | | | | |
| 1.43 Revenue and assessment obligations | | | | |
| 1.44 Industrial development and similar obligations | | | | |
| 1.5 Mortgage-backed securities (includes residential and commercial MBS): | | | | |
| 1.51 Pass-through securities: | | | | |
| 1.511 Issued or guaranteed by GNMA | 277,931 | 0.665 | 277,931 | 0.665 |
| 1.512 Issued or guaranteed by FNMA and FHLMC | 4,574,751 | 10.949 | 4,574,751 | 10.949 |
| 1.513 All other | | | | |
| 1.52 CMOs and REMICs: | | | | |
| 1.521 Issued or guaranteed by GNMA, FNMA, FHLMC or VA | 827,818 | 1.981 | 827,818 | 1.981 |
| 1.522 Issued by non-U.S. Government issuers and collateralized by mortgage-backed securities issued or guaranteed by agencies shown in Line 1.521 | | | | |
| 1.523 All other | | | | |
| 2. Other debt and other fixed income securities (excluding short term): | | | | |
| 2.1 Unaffiliated domestic securities (includes credit tenant loans rated by the SVO) | 2,718,517 | 6.506 | 2,718,517 | 6.506 |
| 2.2 Unaffiliated foreign securities | | | | |
| 2.3 Affiliated securities | | | | |
| 3. Equity interests: | | | | |
| 3.1 Investments in mutual funds | 2,063,691 | 4.939 | 2,063,691 | 4.939 |
| 3.2 Preferred stocks: | | | | |
| 3.21 Affiliated | | | | |
| 3.22 Unaffiliated | | | | |
| 3.3 Publicly traded equity securities (excluding preferred stocks): | | | | |
| 3.31 Affiliated | | | | |
| 3.32 Unaffiliated | | | | |
| 3.4 Other equity securities: | | | | |
| 3.41 Affiliated | | | | |
| 3.42 Unaffiliated | | | | |
| 3.5 Other equity interests including tangible personal property under lease: | | | | |
| 3.51 Affiliated | | | | |
| 3.52 Unaffiliated | | | | |
| 4. Mortgage loans: | | | | |
| 4.1 Construction and land development | | | | |
| 4.2 Agricultural | | | | |
| 4.3 Single family residential properties | | | | |
| 4.4 Multifamily residential properties | | | | |
| 4.5 Commercial loans | | | | |
| 4.6 Mezzanine real estate loans | | | | |
| 5. Real estate investments: | | | | |
| 5.1 Property occupied by company | | | | |
| 5.2 Property held for production of income (including \$ 0 of property acquired in satisfaction of debt) | | | | |
| 5.3 Property held for sale (including \$ 0 property acquired in satisfaction of debt) | | | | |
| 6. Contract loans | | | | |
| 7. Receivables for securities | 1,541 | 0.004 | 1,541 | 0.004 |
| 8. Cash, cash equivalents and short-term investments | 3,495,099 | 8.365 | 3,495,099 | 8.365 |
| 9. Other invested assets | | | | |
| 10. Total invested assets | 41,783,921 | 100.000 | 41,783,921 | 100.000 |

GENERAL INTERROGATORIES

PART 1 - COMMON INTERROGATORIES

GENERAL

- 1.1 Is the reporting entity a member of an Insurance Holding Company System consisting of two or more affiliated persons, one or more of which is an insurer? Yes [X] No []
- 1.2 If yes, did the reporting entity register and file with its domiciliary State Insurance Commissioner, Director or Superintendent or with such regulatory official of the state of domicile of the principal insurer in the Holding Company System, a registration statement providing disclosure substantially similar to the standards adopted by the National Association of Insurance Commissioners (NAIC) in its Model Insurance Holding Company System Regulatory Act and model regulations pertaining thereto, or is the reporting entity subject to standards and disclosure requirements substantially similar to those required by such Act and regulations? Yes [X] No [] N/A []
- 1.3 State Regulating? New Hampshire
- 2.1 Has any change been made during the year of this statement in the charter, by-laws, articles of incorporation, or deed of settlement of the reporting entity? Yes [] No [X]
- 2.2 If yes, date of change: 12/31/2004
- 3.1 State as of what date the latest financial examination of the reporting entity was made or is being made. 12/31/2004
- 3.2 State the as of date that the latest financial examination report became available from either the state of domicile or the reporting entity. This date should be the date of the examined balance sheet and not the date the report was completed or released. 12/31/2004
- 3.3 State as of what date the latest financial examination report became available to other states or the public from either the state of domicile or the reporting entity. This is the release date or completion date of the examination report and not the date of the examination (balance sheet date). 06/23/2006
- 3.4 By what department or departments? State of New Hampshire Insurance Department

- 4.1 During the period covered by this statement, did any agent, broker, sales representative, non-affiliated sales/service organization or any combination thereof under common control (other than salaried employees of the reporting entity) receive credit or commissions for or control a substantial part (more than 20 percent of any major line of business measured on direct premiums) of:
- 4.11 sales of new business? Yes [] No [X]
- 4.12 renewals? Yes [] No [X]
- 4.2 During the period covered by this statement, did any sales/service organization owned in whole or in part by the reporting entity or an affiliate, receive credit or commissions for or control a substantial part (more than 20 percent of any major line of business measured on direct premiums) of:
- 4.21 sales of new business? Yes [] No [X]
- 4.22 renewals? Yes [] No [X]
- 5.1 Has the reporting entity been a party to a merger or consolidation during the period covered by this statement? Yes [] No [X]
- 5.2 If yes, provide the name of the entity, NAIC company code, and state of domicile (use two letter state abbreviation) for any entity that has ceased to exist as a result of the merger or consolidation.

| 1 Name of Entity | 2 NAIC Company Code | 3 State of Domicile |
|---------------------|------------------------|------------------------|
| | | |
| | | |
| | | |

- 6.1 Has the reporting entity had any Certificates of Authority, licenses or registrations (including corporate registration, if applicable) suspended or revoked by any governmental entity during the reporting period? Yes [] No [X]
- 6.2 If yes, give full information
- 7.1 Does any foreign (non-United States) person or entity directly or indirectly control 10% or more of the reporting entity? Yes [] No [X]
- 7.2 If yes,
- 7.21 State the percentage of foreign control 0%
- 7.22 State the nationality(s) of the foreign person(s) or entity(s); or if the entity is a mutual or reciprocal, the nationality of its manager or attorney-in-fact and identify the type of entity(s) (e.g., individual, corporation, government, manager or attorney-in-fact).

| 1 Nationality | 2 Type of Entity |
|------------------|---------------------|
| | |
| | |
| | |

- 8.1 Is the company a subsidiary of a bank holding company regulated by the Federal Reserve Board? Yes [] No [X]
- 8.2 If response to 8.1 is yes, please identify the name of the bank holding company.

GENERAL INTERROGATORIES

PART 1 - COMMON INTERROGATORIES

- 8.3 Is the company affiliated with one or more banks, thrifts or securities firms? Yes [] No [X]
 8.4 If response to 8.3 is yes, please provide the names and locations (city and state of the main office) of any affiliates regulated by a federal financial regulatory services agency [i.e. the Federal Reserve Board (FRB), the Office of the Comptroller of the Currency (OCC), the Office of Thrift Supervision (OTS), the Federal Deposit Insurance Corporation (FDIC) and the Securities Exchange Commission (SEC)] and identify the affiliate's primary federal regulator.

| 1 Affiliate Name | 2 Location (City, State) | 3 FRB | 4 OCC | 5 OTS | 6 FDIC | 7 SEC |
|---------------------|-----------------------------|----------|----------|----------|-----------|----------|
| | | | | | | |
| | | | | | | |
| | | | | | | |
| | | | | | | |

9. What is the name and address of the independent certified public accountant or accounting firm retained to conduct the annual audit?
 Ernst & Young, LLP
 200 Clarendon Street, Boston, MA 02116

10. What is the name, address and affiliation (officer/employee of the reporting entity or actuary/consultant associated with an actuarial consulting firm) of the individual providing the statement of actuarial opinion/certification? William M. Finn, FCAS, MAAA
 62 Maple Avenue, Keene, NH 03431
 Vice President & Chief Actuary of Liberty Mutual Agency Markets

- 11.1 Does the reporting entity own any securities of a real estate holding company or otherwise hold real estate indirectly? Yes [] No [X]
- | | |
|---|----------|
| 11.11 Name of real estate holding company | _____ |
| 11.12 Number of parcels involved | _____ |
| 11.13 Total book/adjusted carrying value | \$ _____ |

11.2 If yes, provide explanation

12. FOR UNITED STATES BRANCHES OF ALIEN REPORTING ENTITIES ONLY:

12.1 What changes have been made during the year in the United States manager or the United States trustees of the reporting entity?

12.2 Does this statement contain all business transacted for the reporting entity through its United States Branch on risks wherever located? Yes [] No [X]

12.3 Have there been any changes made to any of the trust indentures during the year? Yes [] No [X]

12.4 If answer to (12.3) is yes, has the domiciliary or entry state approved the changes? Yes [] No [] N/A [X]

13.1 Are the senior officers (principal executive officer, principal financial officer, principal accounting officer or controller, or persons performing similar functions) of the reporting entity subject to a code of ethics, which includes the following standards? Yes [X] No []

- a. Honest and ethical conduct, including the ethical handling of actual or apparent conflicts of interest between personal and professional relationships;
- b. Full, fair, accurate, timely and understandable disclosure in the periodic reports required to be filed by the reporting entity;
- c. Compliance with applicable governmental laws, rules and regulations;
- d. The prompt internal reporting of violations to an appropriate person or persons identified in the code; and
- e. Accountability for adherence to the code.

13.11 If the response to 13.1 is No, please explain:

13.2 Has the code of ethics for senior managers been amended? Yes [] No [X]

13.21 If the response to 13.2 is Yes, provide information related to amendment(s).

13.3 Have any provisions of the code of ethics been waived for any of the specified officers? Yes [] No [X]

13.31 If the response to 13.3 is Yes, provide the nature of any waiver(s).

BOARD OF DIRECTORS

14. Is the purchase or sale of all investments of the reporting entity passed upon either by the board of directors or a subordinate committee thereof? Yes [X] No []

15. Does the reporting entity keep a complete permanent record of the proceedings of its board of directors and all subordinate committees thereof? Yes [X] No []

16. Has the reporting entity an established procedure for disclosure to its board of directors or trustees of any material interest or affiliation on the part of any of its officers, directors, trustees or responsible employees that is in conflict or is likely to conflict with the official duties of such person? Yes [X] No []

FINANCIAL

17. Has this statement been prepared using a basis of accounting other than Statutory Accounting Principles (e.g., Generally Accepted Accounting Principles)? Yes [] No [X]

18.1 Total amount loaned during the year (inclusive of Separate Accounts, exclusive of policy loans):

| | |
|---|----------|
| 18.11 To directors or other officers | \$ _____ |
| 18.12 To stockholders not officers | \$ _____ |
| 18.13 Trustees, supreme or grand (Fraternal only) | \$ _____ |

18.2 Total amount of loans outstanding at the end of year (inclusive of Separate Accounts, exclusive of policy loans):

| | |
|---|----------|
| 18.21 To directors or other officers | \$ _____ |
| 18.22 To stockholders not officers | \$ _____ |
| 18.23 Trustees, supreme or grand (Fraternal only) | \$ _____ |

GENERAL INTERROGATORIES

PART 1 - COMMON INTERROGATORIES

- 19.1 Were any assets reported in this statement subject to a contractual obligation to transfer to another party without the liability for such obligation being reported in the statement? Yes [] No [X]
- 19.2 If yes, state the amount thereof at December 31 of the current year:
- | | | |
|----------------------------|----|---|
| 19.21 Rented from others | \$ | 0 |
| 19.22 Borrowed from others | \$ | 0 |
| 19.23 Leased from others | \$ | 0 |
| 19.24 Other | \$ | 0 |
- 20.1 Does this statement include payments for assessments as described in the Annual Statement Instructions other than guaranty fund or guaranty association assessments? Yes [] No [X]
- 20.2 If answer is yes:
- | | | |
|--|----|---|
| 20.21 Amount paid as losses or risk adjustment | \$ | 0 |
| 20.22 Amount paid as expenses | \$ | 0 |
| 20.23 Other amounts paid | \$ | 0 |
- 21.1 Does the reporting entity report any amounts due from parent, subsidiaries or affiliates on Page 2 of this statement? Yes [X] No []
- 21.2 If yes, indicate any amounts receivable from parent included in the Page 2 amount: \$ 0

INVESTMENT

- 22.1 Were all the stocks, bonds and other securities owned December 31 of current year, over which the reporting entity has exclusive control, in the actual possession of the reporting entity on said date, except as shown by Schedule E - Part 3 - Special Deposits? Yes [X] No []
- 22.2 If no, give full and complete information, relating thereto
- 23.1 Were any of the stocks, bonds or other assets of the reporting entity owned at December 31 of the current year not exclusively under the control of the reporting entity, or has the reporting entity sold or transferred any assets subject to a put option contract that is currently in force? (Exclude securities subject to Interrogatory 19.1). Yes [X] No []
- 23.2 If yes, state the amount thereof at December 31 of the current year:
- | | | |
|--|----|-----------|
| 23.21 Loaned to others | \$ | 0 |
| 23.22 Subject to repurchase agreements | \$ | 0 |
| 23.23 Subject to reverse repurchase agreements | \$ | 0 |
| 23.24 Subject to dollar repurchase agreements | \$ | 0 |
| 23.25 Subject to reverse dollar repurchase agreements | \$ | 0 |
| 23.26 Pledged as collateral | \$ | 0 |
| 23.27 Placed under option agreements | \$ | 0 |
| 23.28 Letter stock or securities restricted as to sale | \$ | 0 |
| 23.29 On deposit with state or other regulatory body | \$ | 2,595,933 |
| 23.291 Other | \$ | 0 |

23.3 For category (23.28) provide the following:

| 1 Nature of Restriction | 2 Description | 3 Amount |
|----------------------------|------------------|-------------|
| | | |
| | | |

- 24.1 Does the reporting entity have any hedging transactions reported on Schedule DB? Yes [] No [X]
- 24.2 If yes, has a comprehensive description of the hedging program been made available to the domiciliary state? Yes [] No [] N/A [X]
- If no, attach a description with this statement.
- 25.1 Were any preferred stocks or bonds owned as of December 31 of the current year mandatorily convertible into equity, or, at the option of the issuer, convertible into equity? Yes [] No [X]
- 25.2 If yes, state the amount thereof at December 31 of the current year. \$ 0

26. Excluding items in Schedule E, real estate, mortgage loans and investments held physically in the reporting entity's offices, vaults or safety deposit boxes, were all stocks, bonds and other securities owned throughout the current year held pursuant to a custodial agreement with a qualified bank or trust company in accordance with Section 3, III Conducting Examinations, G - Custodial or Safekeeping agreements of the NAIC Financial Condition Examiners Handbook? Yes [X] No []

26.01 For agreements that comply with the requirements of the NAIC Financial Condition Examiners Handbook, complete the following:

| 1 Name of Custodian(s) | 2 Custodian's Address |
|---------------------------|---|
| JP MORGAN CHASE | 3 Chase Metro Tech Center, Brooklyn, NY 11245 |
| | |
| | |

26.02 For all agreements that do not comply with the requirements of the NAIC Financial Condition Examiners Handbook, provide the name, location and a complete explanation:

| 1 Name(s) | 2 Location(s) | 3 Complete Explanation(s) |
|--------------|------------------|------------------------------|
| | | |
| | | |

- 26.03 Have there been any changes, including name changes, in the custodian(s) identified in 26.01 during the current year? Yes [] No [X]

GENERAL INTERROGATORIES

PART 1 - COMMON INTERROGATORIES

26.04 If yes, give full and complete information relating thereto:

| 1 Old Custodian | 2 New Custodian | 3 Date of Change | 4 Reason |
|--------------------|--------------------|---------------------|-------------|
| | | | |
| | | | |
| | | | |

26.05 Identify all investment advisors, brokers/dealers or individuals acting on behalf of brokers/dealers that have access to the investment accounts, handle securities and have authority to make investments on behalf of the reporting entity:

| 1 Central Registration Depository Number(s) | 2 Name | 3 Address |
|---|-----------|--------------|
| | | |
| | | |
| | | |

27.1 Does the reporting entity have any diversified mutual funds reported in Schedule D, Part 2 (diversified according to the Securities and Exchange Commission (SEC) in the Investment Company Act of 1940 [Section 5 (b) (1)])? Yes [] No []

27.2 If yes, complete the following schedule:

| 1 CUSIP# | 2 Name of Mutual Fund | 3 Book/Adjusted Carrying Value |
|-------------|--------------------------|--------------------------------------|
| | | |
| | | |
| | | |
| 27.2999 | Total | |

27.3 For each mutual fund listed in the table above, complete the following schedule:

| 1 Name of Mutual Fund (from above table) | 2 Name of Significant Holding of the Mutual Fund | 3 Amount of Mutual Fund's Book/Adjusted Carrying Value Attributable to the Holding | 4 Date of Valuation |
|--|--|---|---------------------------|
| | | | |
| | | | |
| | | | |

28. Provide the following information for all short-term and long-term bonds and all preferred stocks. Do not substitute amortized value or statement value for fair value.

| | 1 Statement (Admitted) Value | 2 Fair Value | 3 Excess of Statement over Fair Value (-), or Fair Value over Statement (+) |
|-----------------------|------------------------------------|-----------------|---|
| 28.1 Bonds | 41,782,380 | 42,571,925 | 789,545 |
| 28.2 Preferred stocks | | | |
| 28.3 Totals | 41,782,380 | 42,571,925 | 789,545 |

28.4 Describe the sources or methods utilized in determining the fair values: IDC, Bloomberg, NAIC-SVO, Broker Quotes, Analytically Determined

29.1 Have all the filing requirements of the Purposes and Procedures manual of the NAIC Securities Valuation Office been followed? Yes [] No []

29.2 If no, list exceptions: _____

OTHER

30.1 Amount of payments to trade associations, service organizations and statistical or rating bureaus, if any? \$ _____ 0

30.2 List the name of the organization and the amount paid if any such payment represented 25% or more of the total payments to trade associations, service organizations and statistical or rating bureaus during the period covered by this statement.

| 1 Name | 2 Amount Paid |
|-----------|------------------|
| | \$ |
| | \$ |
| | \$ |

31.1 Amount of payments for legal expenses, if any? \$ _____ 0

GENERAL INTERROGATORIES

PART 1 - COMMON INTERROGATORIES

31.2 List the name of the firm and the amount paid if any such payment represented 25% or more of the total payments for legal expenses during the period covered by this statement.

| 1 Name | 2 Amount Paid |
|-----------|------------------|
| | \$ |
| | \$ |
| | \$ |

32.1 Amount of payments for expenditures in connection with matters before legislative bodies, officers or departments of government, if any?

\$ _____ 0

32.2 List the name of the firm and the amount paid if any such payment represented 25% or more of the total payment expenditures in connection with matters before legislative bodies, officers or departments of government during the period covered by this statement.

| 1 Name | 2 Amount Paid |
|-----------|------------------|
| | \$ |
| | \$ |
| | \$ |
| | \$ |

GENERAL INTERROGATORIES

PART 2 - PROPERTY & CASUALTY INTERROGATORIES

1.1 Does the reporting entity have any direct Medicare Supplement Insurance in force? YES [] NO [X]
 1.2 If yes, indicate premium earned on U. S. business only. \$ 0
 1.3 What portion of Item (1.2) is not reported on the Medicare Supplement Insurance Experience Exhibit? \$ 0
 1.31 Reason for excluding

1.4 Indicate amount of earned premium attributable to Canadian and/or Other Alien not included in Item (1.2) above. \$ 0
 1.5 Indicate total incurred claims on all Medicare Supplement insurance. \$ 0

1.6 Individual policies:
 Most current three years:
 1.61 Total premium earned \$ 0
 1.62 Total incurred claims \$ 0
 1.63 Number of covered lives \$ 0
 All years prior to most current three years:
 1.64 Total premium earned \$ 0
 1.65 Total incurred claims \$ 0
 1.66 Number of covered lives \$ 0

1.7 Group policies:
 Most current three years:
 1.71 Total premium earned \$ 0
 1.72 Total incurred claims \$ 0
 1.73 Number of covered lives \$ 0
 All years prior to most current three years:
 1.74 Total premium earned \$ 0
 1.75 Total incurred claims \$ 0
 1.76 Number of covered lives \$ 0

2. Health Test:

| | 1 | 2 |
|-----------------------------|--------------|------------|
| | Current Year | Prior Year |
| 2.1 Premium Numerator | \$ 0 | \$ 0 |
| 2.2 Premium Denominator | \$ 0 | \$ 0 |
| 2.3 Premium Ratio (2.1/2.2) | 0.00 | 0.00 |
| 2.4 Reserve Numerator | \$ 0 | \$ 0 |
| 2.5 Reserve Denominator | \$ 0 | \$ 0 |
| 2.6 Reserve Ratio (2.4/2.5) | 0.00 | 0.00 |

3.1 Does the reporting entity issue both participating and non-participating policies? YES [X] NO []
 3.2 If yes, state the amount of calendar year premiums written on:
 3.21 Participating policies \$ 5,252,941
 3.22 Non-participating policies \$ 255,718,310

4. For Mutual Reporting Entities and Reciprocal Exchange only:
 4.1 Does the reporting entity issue assessable policies? YES [] NO [X]
 4.2 Does the reporting entity issue non-assessable policies? YES [] NO [X]
 4.3 If assessable policies are issued, what is the extent of the contingent liability of the policyholders? 0 %
 4.4 Total amount of assessments paid or ordered to be paid during the year on deposit notes or contingent premiums. \$ 0

5. For Reciprocal Exchanges Only:
 5.1 Does the exchange appoint local agents? YES [] NO [X]
 5.2 If yes, is the commission paid:
 5.21 Out of Attorney's-in-fact compensation YES [] NO [] N/A [X]
 5.22 As a direct expense of the exchange YES [] NO [] N/A [X]

5.3 What expenses of the Exchange are not paid out of the compensation of the Attorney-in-fact?
 5.4 Has any Attorney-in-fact compensation, contingent on fulfillment of certain conditions, been deferred? YES [] NO [X]
 5.5 If yes, give full information

GENERAL INTERROGATORIES
(Continued)

PART 2 - PROPERTY & CASUALTY INTERROGATORIES

- 6.1 What provision has this reporting entity made to protect itself from an excessive loss in the event of a catastrophe under a workers' compensation contract issued without limit of loss: In 2007 the Company purchased Workers' Compensation Catastrophe reinsurance separately and/or with the Liberty Mutual Group with limits of \$1,175m xs \$25m. A minimum of 75% was placed for each layer.
- 6.2 Describe the method used to estimate this reporting entity's probable maximum insurance loss, and identify the type of insured exposures comprising that probable maximum loss, the locations of concentrations of those exposures and the external resources (such as consulting firms or computer software models), if any, used in the estimation process: The Company tracks aggregate property and WC exposure and reviews quarterly. It uses RiskLink from RMS and AIR from AIR for EQ and wind. It uses RiskLink for WC. Concentrations are in the Northeast for wind and New Madrid for EQ.
- 6.3 What provision has this reporting entity made (such as a catastrophic reinsurance program) to protect itself from an excessive loss arising from the types and concentrations of insured exposures comprising its probable maximum property insurance loss? In 2007 the Company purchased property catastrophe reinsurance, separately and/or with the Liberty Mutual group with limits of \$1,900m xs \$50m. The coverage is sufficient to protect against the Company's 250 year event.
- 6.4 Does the reporting entity carry catastrophe reinsurance protection for at least one reinstatement, in an amount sufficient to cover its estimated probable maximum loss attributable to a single loss event or occurrence? YES NO
- 6.5 If no, describe any arrangements or mechanisms employed by the reporting entity to supplement its catastrophe reinsurance program or to hedge its exposure to uninsured catastrophic loss
- 7.1 Has the reporting entity reinsured any risk with any other entity under a quota share reinsurance contract that includes a provision that would limit the reinsurer's losses below the stated quota share percentage (e.g., a deductible, a loss ratio corridor, a loss cap, an aggregate limit or any similar provisions)? YES NO
- 7.2 If yes, indicate the number of reinsurance contracts containing such provisions. 0
- 7.3 If yes, does the amount of reinsurance credit taken reflect the reduction in quota share coverage caused by any applicable limiting provision(s)? YES NO
- 8.1 Has this reporting entity reinsured any risk with any other entity and agreed to release such entity from liability, in whole or in part, from any loss that may occur on this risk, or portion thereof, reinsured? YES NO
- 8.2 If yes, give full information
- 9.1 Has the reporting entity ceded any risk under any reinsurance contract (or under multiple contracts with the same reinsurer or its affiliates) for which during the period covered by the statement: (i) it recorded a positive or negative underwriting result greater than 5% of prior year-end surplus as regards policyholders or it reported calendar year written premium ceded or year-end loss and loss expense reserves ceded greater than 5% of prior year-end surplus as regards policyholders; (ii) it accounted for that contract as reinsurance and not as a deposit; and (iii) the contract(s) contain one or more of the following features or other features that would have similar results:
 (a) A contract term longer than two years and the contract is noncancellable by the reporting entity during the contract term;
 (b) A limited or conditional cancellation provision under which cancellation triggers an obligation by the reporting entity, or an affiliate of the reporting entity, to enter into a new reinsurance contract with the reinsurer, or an affiliate of the reinsurer;
 (c) Aggregate stop loss reinsurance coverage;
 (d) A unilateral right by either party (or both parties) to commute the reinsurance contract, whether conditional or not, except for such provisions which are only triggered by a decline in the credit status of the other party;
 (e) A provision permitting reporting of losses, or payment of losses, less frequently than on a quarterly basis (unless there is no activity during the period); or
 (f) Payment schedule, accumulating retentions from multiple years or any features inherently designed to delay timing of the reimbursement to the ceding entity. YES NO
- 9.2 Has the reporting entity during the period covered by the statement ceded any risk under any reinsurance contract (or under multiple contracts with the same reinsurer or its affiliates), for which, during the period covered by the statement, it recorded a positive or negative underwriting result greater than 5% of prior year-end surplus as regards policyholders or it reported calendar year written premium ceded or year-end loss and loss expense reserves ceded greater than 5% of prior year-end surplus as regards policyholders; excluding cessions to approved pooling arrangements or to captive insurance companies that are directly or indirectly controlling, controlled by, or under common control with (i) one or more unaffiliated policyholders of the reporting entity, or (ii) an association of which one or more unaffiliated policyholders of the reporting entity is a member where:
 (a) The written premium ceded to the reinsurer by the reporting entity or its affiliates represents fifty percent (50%) or more of the entire direct and assumed premium written by the reinsurer based on its most recently available financial statement; or
 (b) Twenty-five percent (25%) or more of the written premium ceded to the reinsurer has been retroceded back to the reporting entity or its affiliates in a separate reinsurance contract. YES NO
- 9.3 If yes to 9.1 or 9.2, please provide the following information in the Reinsurance Summary Supplemental Filing for General Interrogatory 9:
 (a) The aggregate financial statement impact gross of all such ceded reinsurance contracts on the balance sheet and statement of income;
 (b) A summary of the reinsurance contract terms and indicate whether it applies to the contracts meeting the criteria in 9.1 or 9.2; and
 (c) A brief discussion of management's principle objectives in entering into the reinsurance contract including the economic purpose to be achieved.
- 9.4 Except for transactions meeting the requirements of paragraph 30 of SSAP No. 62, Property and Casualty Reinsurance, has the reporting entity ceded any risk under any reinsurance contract (or multiple contracts with the same reinsurer or its affiliates) during the period covered by the financial statement, and either:
 (a) Accounted for that contract as reinsurance (either prospective or retroactive) under statutory accounting principles ("SAP") and as a deposit under generally accepted accounting principles ("GAAP"); or
 (b) Accounted for that contract as reinsurance under GAAP and as a deposit under SAP? YES NO

GENERAL INTERROGATORIES
(Continued)

PART 2 - PROPERTY & CASUALTY INTERROGATORIES

- 9.5 If yes to 9.4, explain in the Reinsurance Summary Supplemental Filing for General Interrogatory 9 (Section D) why the contract(s) is treated differently for GAAP and SAP.
- 9.6 The reporting entity is exempt from the Reinsurance Attestation Supplement under one or more of the following criteria:
- (a) The entity does not utilize reinsurance; or, YES [] NO [X]
- (b) The entity only engages in a 100% quota share contract with an affiliate and the affiliated or lead company has filed an attestation supplement; or, YES [] NO [X]
- (c) The entity has no external cessions and only participates in an intercompany pool and the affiliated or lead company has filed an attestation supplement. YES [X] NO []
10. If the reporting entity has assumed risks from another entity, there should be charged on account of such reinsurances a reserve equal to that which the original entity would have been required to charge had it retained the risks. Has this been done? YES [] NO [] N/A [X]
- 11.1 Has the reporting entity guaranteed policies issued by any other entity and now in force? YES [] NO [X]
- 11.2 If yes, give full information
-
- 12.1 If the reporting entity recorded accrued retrospective premiums on insurance contracts on Line 13.3 of the asset schedule, Page 2, state the amount of corresponding liabilities recorded for:
- | | | |
|---|----|---|
| 12.11 Unpaid losses | \$ | 0 |
| 12.12 Unpaid underwriting expenses (including loss adjustment expenses) | \$ | 0 |
- 12.2 Of the amount on Line 13.3, Page 2, state the amount that is secured by letters of credit, collateral and other funds? \$ 0
- 12.3 If the reporting entity underwrites commercial insurance risks, such as workers' compensation, are premium notes or promissory notes accepted from its insureds covering unpaid premiums and/or unpaid losses? YES [] NO [X] N/A []
- 12.4 If yes, provide the range of interest rates charged under such notes during the period covered by this statement:
- | | |
|------------|---------|
| 12.41 From | 0.000 % |
| 12.42 To | 0.000 % |
- 12.5 Are letters of credit or collateral and other funds received from insureds being utilized by the reporting entity to secure premium notes or promissory notes taken by a reporting entity, or to secure any of the reporting entity's reported direct unpaid loss reserves, including unpaid losses under loss deductible features of commercial policies? YES [] NO [X]
- 12.6 If yes, state the amount thereof at December 31 of current year:
- | | | |
|----------------------------------|----|---|
| 12.61 Letters of Credit | \$ | 0 |
| 12.62 Collateral and other funds | \$ | 0 |
- 13.1 Largest net aggregate amount insured in any one risk (excluding workers' compensation): \$ 0
- 13.2 Does any reinsurance contract considered in the calculation of this amount include an aggregate limit of recovery without also including a reinstatement provision? YES [] NO [X]
- 13.3 State the number of reinsurance contracts (excluding individual facultative risk certificates, but including facultative programs, automatic facilities or facultative obligatory contracts) considered in the calculation of the amount. 3
- 14.1 Is the company a cedant in a multiple cedant reinsurance contract? YES [X] NO []
- 14.2 If yes, please describe the method of allocating and recording reinsurance among the cedants: Premiums and recoverables were allocated pursuant to separate intercompany agreements.
-
- 14.3 If the answer to 14.1 is yes, are the methods described in item 14.2 entirely contained in the respective multiple cedant reinsurance contracts? YES [] NO [X]
- 14.4 If the answer to 14.3 is no, are all the methods described in 14.2 entirely contained in written agreements? YES [X] NO []
- 14.5 If the answer to 14.4 is no, please explain:
-
- 15.1 Has the reporting entity guaranteed any financed premium accounts? YES [] NO [X]
- 15.2 If yes, give full information
-
- 16.1 Does the reporting entity write any warranty business? YES [] NO [X]
- If yes, disclose the following information for each of the following types of warranty coverage:

| | 1 | 2 | 3 | 4 | 5 |
|------------------|---------------------------|-------------------------|---------------------------|----------------------------|--------------------------|
| | Direct Losses Incurred | Direct Losses Unpaid | Direct Written Premium | Direct Premium Unearned | Direct Premium Earned |
| 16.11 Home | \$ 0 | \$ 0 | \$ 0 | \$ 0 | \$ 0 |
| 16.12 Products | \$ 0 | \$ 0 | \$ 0 | \$ 0 | \$ 0 |
| 16.13 Automobile | \$ 0 | \$ 0 | \$ 0 | \$ 0 | \$ 0 |
| 16.14 Other* | \$ 0 | \$ 0 | \$ 0 | \$ 0 | \$ 0 |

* Disclose type of coverage: _____

GENERAL INTERROGATORIES
(Continued)

PART 2 - PROPERTY & CASUALTY INTERROGATORIES

17.1 Does the reporting entity include amounts recoverable on unauthorized reinsurance in Schedule F - Part 3 that it excludes from Schedule F - Part 5. YES [] NO [X]

Incurred but not reported losses on contracts not in force prior to July 1, 1984 and not subsequently renewed are exempt from inclusion in Schedule F - Part 5. Provide the following information for this exemption:

| | | | |
|-------|---|----|----------|
| 17.11 | Gross amount of unauthorized reinsurance in Schedule F - Part 3 excluded from Schedule F - Part 5 | \$ | <u>0</u> |
| 17.12 | Unfunded portion of Interrogatory 17.11 | \$ | <u>0</u> |
| 17.13 | Paid losses and loss adjustment expenses portion of Interrogatory 17.11 | \$ | <u>0</u> |
| 17.14 | Case reserves portion of Interrogatory 17.11 | \$ | <u>0</u> |
| 17.15 | Incurred but not reported portion of Interrogatory 17.11 | \$ | <u>0</u> |
| 17.16 | Unearned premium portion of Interrogatory 17.11 | \$ | <u>0</u> |
| 17.17 | Contingent commission portion of Interrogatory 17.11 | \$ | <u>0</u> |

Provide the following information for all other amounts included in Schedule F - Part 3 and excluded from Schedule F - Part 5, not included above.

| | | | |
|-------|---|----|----------|
| 17.18 | Gross amount of unauthorized reinsurance in Schedule F - Part 3 excluded from Schedule F - Part 5 | \$ | <u>0</u> |
| 17.19 | Unfunded portion of Interrogatory 17.18 | \$ | <u>0</u> |
| 17.20 | Paid losses and loss adjustment expenses portion of Interrogatory 17.18 | \$ | <u>0</u> |
| 17.21 | Case reserves portion of Interrogatory 17.18 | \$ | <u>0</u> |
| 17.22 | Incurred but not reported portion of Interrogatory 17.18 | \$ | <u>0</u> |
| 17.23 | Unearned premium portion of Interrogatory 17.18 | \$ | <u>0</u> |
| 17.24 | Contingent commission portion of Interrogatory 17.18 | \$ | <u>0</u> |

FIVE-YEAR HISTORICAL DATA

Show amounts in whole dollars only, no cents; show percentages to one decimal place, i.e., 17.6.

| | 1 2007 | 2 2006 | 3 2005 | 4 2004 | 5 2003 |
|---|-------------|-------------|-------------|-------------|-------------|
| Gross Premiums Written (Page 8, Part 1B, Cols. 1, 2 & 3) | | | | | |
| 1. Liability lines (Lines 11.1, 11.2, 16, 17.1, 17.2, 18.1, 18.2, 19.1, 19.2 & 19.3, 19.4) | 139,023,425 | 133,816,896 | 125,608,193 | 106,600,522 | 91,780,715 |
| 2. Property lines (Lines 1, 2, 9, 12, 21 & 26) | 30,249,406 | 31,287,138 | 32,664,309 | 33,175,134 | 29,023,178 |
| 3. Property and liability combined lines (Lines 3, 4, 5, 8, 22 & 27) | 91,698,419 | 96,650,692 | 97,090,061 | 91,922,818 | 86,303,128 |
| 4. All other lines (Lines 6, 10, 13, 14, 15, 23, 24, 28, 29 & 33) | | | | | |
| 5. Nonproportional reinsurance lines (Lines 30, 31 & 32) | | | | | |
| 6. Total (Line 34) | 260,971,250 | 261,754,726 | 255,362,563 | 231,698,474 | 207,107,021 |
| Net Premiums Written (Page 8, Part 1B, Col. 6) | | | | | |
| 7. Liability lines (Lines 11.1, 11.2, 16, 17.1, 17.2, 18.1, 18.2, 19.1, 19.2 & 19.3, 19.4) | | | | | |
| 8. Property lines (Lines 1, 2, 9, 12, 21 & 26) | | | | | |
| 9. Property and liability combined lines (Lines 3, 4, 5, 8, 22 & 27) | | | | | |
| 10. All other lines (Lines 6, 10, 13, 14, 15, 23, 24, 28, 29 & 33) | | | | | |
| 11. Nonproportional reinsurance lines (Lines 30, 31 & 32) | | | | | |
| 12. Total (Line 34) | | | | | |
| Statement of Income (Page 4) | | | | | |
| 13. Net underwriting gain (loss) (Line 8) | | | | | |
| 14. Net investment gain (loss) (Line 11) | 1,882,287 | 3,183,857 | 3,596,772 | 3,626,393 | 2,699,856 |
| 15. Total other income (Line 15) | (1,443) | (790) | (173) | (139) | |
| 16. Dividends to policyholders (Line 17) | | | | | |
| 17. Federal and foreign income taxes incurred (Line 19) | 422,550 | 411,611 | 369,125 | 258,212 | (372,773) |
| 18. Net income (Line 20) | 1,458,294 | 2,771,456 | 3,227,474 | 3,368,042 | 3,072,629 |
| Balance Sheet Lines (Pages 2 and 3) | | | | | |
| 19. Total admitted assets excluding protected cell business (Page 2, Line 24, Col. 3) | 43,547,761 | 42,554,199 | 84,505,033 | 77,223,021 | 72,664,182 |
| 20. Premiums and considerations (Page 2, Col. 3) | | | | | |
| 20.1 In course of collection (Line 13.1) | | | | | (2) |
| 20.2 Deferred and not yet due (Line 13.2) | | | | | |
| 20.3 Accrued retrospective premiums (Line 13.3) | | | | | |
| 21. Total liabilities excluding protected cell business (Page 3, Line 24) | 605,867 | 1,503,631 | 18,760,289 | 15,058,901 | 16,703,176 |
| 22. Losses (Page 3, Line 1) | | | | | |
| 23. Loss adjustment expenses (Page 3, Line 3) | | | | | |
| 24. Unearned premiums (Page 3, Line 9) | | | | | |
| 25. Capital paid up (Page 3, Lines 28 & 29) | 3,800,000 | 3,800,000 | 3,800,000 | 3,800,000 | 3,800,000 |
| 26. Surplus as regards policyholders (Page 3, Line 35) | 42,941,894 | 41,050,568 | 65,744,744 | 62,164,120 | 55,961,006 |
| Cash Flow (Page 5) | | | | | |
| 27. Net cash from operations (Line 11) | 1,704,531 | (5,405,795) | 2,827,808 | 8,028,617 | 8,923,553 |
| Risk-Based Capital Analysis | | | | | |
| 28. Total adjusted capital | 42,941,894 | 41,050,568 | 65,744,744 | 62,164,120 | 55,961,006 |
| 29. Authorized control level risk-based capital | 56,461 | 58,054 | 267,717 | 194,912 | 305,147 |
| Percentage Distribution of Cash, Cash Equivalents and Invested Assets (Page 2, Col. 3) (Item divided by Page 2, Line 10, Col. 3) x 100.0 | | | | | |
| 30. Bonds (Line 1) | 86.7 | 91.6 | 97.6 | 96.3 | 96.5 |
| 31. Stocks (Lines 2.1 & 2.2) | | | | | |
| 32. Mortgage loans on real estate (Lines 3.1 and 3.2) | | | | | |
| 33. Real estate (Lines 4.1, 4.2 & 4.3) | | | | | |
| 34. Cash, cash equivalents and short-term investments (Line 5) | 13.3 | 8.4 | 2.4 | 3.7 | 3.5 |
| 35. Contract loans (Line 6) | | | | | |
| 36. Other invested assets (Line 7) | | | | | |
| 37. Receivables for securities (Line 8) | | | | | |
| 38. Aggregate write-ins for invested assets (Line 9) | | | | | |
| 39. Cash, cash equivalents and invested assets (Line 10) | 100.0 | 100.0 | 100.0 | 100.0 | 100.0 |
| Investments in Parent, Subsidiaries and Affiliates | | | | | |
| 40. Affiliated bonds, (Sch. D, Summary, Line 25, Col. 1) | | | | | |
| 41. Affiliated preferred stocks (Sch. D, Summary, Line 39, Col. 1) | | | | | |
| 42. Affiliated common stocks (Sch. D, Summary, Line 53, Col. 1) | | | | | |
| 43. Affiliated short-term investments (subtotals included in Schedule DA, Part 2, Col. 5, Line 7) | | | | | |
| 44. Affiliated mortgage loans on real estate | | | | | |
| 45. All other affiliated | | | | | |
| 46. Total of above Lines 40 to 45 | | | | | |
| 47. Percentage of investments in parent, subsidiaries and affiliates to surplus as regards policyholders (Line 46 above divided by Page 3, Col. 1, Line 35 x 100.0) | | | | | |

FIVE-YEAR HISTORICAL DATA
(Continued)

| | 1 2007 | 2 2006 | 3 2005 | 4 2004 | 5 2003 |
|--|-------------|--------------|------------|------------|------------|
| Capital and Surplus Accounts (Page 4) | | | | | |
| 48. Net unrealized capital gains (losses) (Line 24) | | | | | 201,448 |
| 49. Dividends to stockholders (Line 35) | | (27,574,000) | | | |
| 50. Change in surplus as regards policyholders for the year (Line 38) | 1,891,326 | (24,694,176) | 3,580,624 | 6,203,114 | 292,094 |
| Gross Losses Paid (Page 9, Part 2, Cols. 1 & 2) | | | | | |
| 51. Liability lines (Lines 11.1, 11.2, 16, 17.1, 17.2, 18.1, 18.2, 19.1, 19.2 & 19.3, 19.4) | 53,005,110 | 49,876,309 | 49,466,411 | 45,603,352 | 35,105,483 |
| 52. Property lines (Lines 1, 2, 9, 12, 21 & 26) | 18,801,161 | 9,072,302 | 11,152,613 | 9,380,173 | 9,537,845 |
| 53. Property and liability combined lines (Lines 3, 4, 5, 8, 22 & 27) | 35,116,256 | 37,297,180 | 30,446,694 | 32,475,407 | 27,822,468 |
| 54. All other lines (Lines 6, 10, 13, 14, 15, 23, 24, 28, 29 & 33) | | | | | |
| 55. Nonproportional reinsurance lines (Lines 30, 31 & 32) | | | | | |
| 56. Total (Line 34) | 106,922,527 | 96,245,791 | 91,065,718 | 87,458,932 | 72,465,796 |
| Net Losses Paid (Page 9, Part 2, Col. 4) | | | | | |
| 57. Liability lines (Lines 11.1, 11.2, 16, 17.1, 17.2, 18.1, 18.2, 19.1, 19.2 & 19.3, 19.4) | | | | | |
| 58. Property lines (Lines 1, 2, 9, 12, 21 & 26) | | | | | |
| 59. Property and liability combined lines (Lines 3, 4, 5, 8, 22 & 27) | | | | | |
| 60. All other lines (Lines 6, 10, 13, 14, 15, 23, 24, 28, 29 & 33) | | | | | |
| 61. Nonproportional reinsurance lines (Lines 30, 31 & 32) | | | | | |
| 62. Total (Line 34) | | | | | |
| Operating Percentages (Page 4) (Item divided by Page 4, Line 1) x 100.0 | | | | | |
| 63. Premiums earned (Line 1) | 100.0 | 100.0 | 100.0 | 100.0 | 100.0 |
| 64. Losses incurred (Line 2) | | | | | |
| 65. Loss expenses incurred (Line 3) | | | | | |
| 66. Other underwriting expenses incurred (Line 4) | | | | | |
| 67. Net underwriting gain (loss) (Line 8) | | | | | |
| Other Percentages | | | | | |
| 68. Other underwriting expenses to net premiums written (Page 4, Lines 4 + 5 - 15 divided by Page 8, Part 1B, Col. 6, Line 34 x 100.0) | | | | | |
| 69. Losses and loss expenses incurred to premiums earned (Page 4, Lines 2 + 3 divided by Page 4, Line 1 x 100.0) | | | | | |
| 70. Net premiums written to policyholders' surplus (Page 8, Part 1B, Col. 6, Line 34 divided by Page 3, Line 35, Col. 1 x 100.0) | | | | | |
| One Year Loss Development (000 omitted) | | | | | |
| 71. Development in estimated losses and loss expenses incurred prior to current year (Schedule P, Part 2 - Summary, Line 12, Col. 11) | | | | | |
| 72. Percent of development of losses and loss expenses incurred to policyholders' surplus of prior year end (Line 71 above divided by Page 4, Line 21, Col. 1 x 100.0) | | | | | |
| Two Year Loss Development (000 omitted) | | | | | |
| 73. Development in estimated losses and loss expenses incurred 2 years before the current year and prior year (Schedule P, Part 2 - Summary, Line 12, Col. 12) | | | | | |
| 74. Percent of development of losses and loss expenses incurred to reported policyholders' surplus of second prior year end (Line 73 above divided by Page 4, Line 21, Col. 2 x 100.0) | | | | | |

SCHEDULE D - SUMMARY BY COUNTRY
Long-Term Bonds and Stocks OWNED December 31 of Current Year

| Description | | 1 | 2 | 3 | 4 |
|--|-----------------------------------|------------------------------|-------------------|-------------------|--------------------|
| | | Book/Adjusted Carrying Value | Fair Value | Actual Cost | Par Value of Bonds |
| BONDS Governments (Including all obligations guaranteed by governments) | 1. United States | 28,102,504 | 28,680,337 | 28,210,304 | 27,957,341 |
| | 2. Canada | | | | |
| | 3. Other Countries | | | | |
| | 4. Totals | 28,102,504 | 28,680,337 | 28,210,304 | 27,957,341 |
| States, Territories and Possessions (Direct and guaranteed) | 5. United States | | | | |
| | 6. Canada | | | | |
| | 7. Other Countries | | | | |
| | 8. Totals | | | | |
| Political Subdivisions of States, Territories and Possessions (Direct and guaranteed) | 9. United States | | | | |
| | 10. Canada | | | | |
| | 11. Other Countries | | | | |
| | 12. Totals | | | | |
| Special revenue and special assessment obligations and all non-guaranteed obligations of agencies and authorities of governments and their political subdivisions | 13. United States | 5,394,268 | 5,486,067 | 5,396,654 | 5,422,629 |
| | 14. Canada | | | | |
| | 15. Other Countries | | | | |
| | 16. Totals | 5,394,268 | 5,486,067 | 5,396,654 | 5,422,629 |
| Public Utilities (unaffiliated) | 17. United States | | | | |
| | 18. Canada | | | | |
| | 19. Other Countries | | | | |
| | 20. Totals | | | | |
| Industrial and Miscellaneous and Credit Tenant Loans (unaffiliated) | 21. United States | 2,726,818 | 2,846,731 | 2,741,886 | 2,697,920 |
| | 22. Canada | | | | |
| | 23. Other Countries | | | | |
| | 24. Totals | 2,726,818 | 2,846,731 | 2,741,886 | 2,697,920 |
| Parent, Subsidiaries and Affiliates | 25. Totals | | | | |
| | 26. Total Bonds | 36,223,590 | 37,013,135 | 36,348,844 | 36,077,890 |
| PREFERRED STOCKS Public Utilities (unaffiliated) | 27. United States | | | | |
| | 28. Canada | | | | |
| | 29. Other Countries | | | | |
| | 30. Totals | | | | |
| Banks, Trust and Insurance Companies (unaffiliated) | 31. United States | | | | |
| | 32. Canada | | | | |
| | 33. Other Countries | | | | |
| | 34. Totals | | | | |
| Industrial and Miscellaneous (unaffiliated) | 35. United States | | | | |
| | 36. Canada | | | | |
| | 37. Other Countries | | | | |
| | 38. Totals | | | | |
| Parent, Subsidiaries and Affiliates | 39. Totals | | | | |
| | 40. Total Preferred Stocks | | | | |
| COMMON STOCKS Public Utilities (unaffiliated) | 41. United States | | | | |
| | 42. Canada | | | | |
| | 43. Other Countries | | | | |
| | 44. Totals | | | | |
| Banks, Trust and Insurance Companies (unaffiliated) | 45. United States | | | | |
| | 46. Canada | | | | |
| | 47. Other Countries | | | | |
| | 48. Totals | | | | |
| Industrial and Miscellaneous (unaffiliated) | 49. United States | | | | |
| | 50. Canada | | | | |
| | 51. Other Countries | | | | |
| | 52. Totals | | | | |
| Parent, Subsidiaries and Affiliates | 53. Totals | | | | |
| | 54. Total Common Stocks | | | | |
| | 55. Total Stocks | | | | |
| | 56. Total Bonds and Stocks | 36,223,590 | 37,013,135 | 36,348,844 | |

SCHEDULE D - VERIFICATION BETWEEN YEARS
Bonds and Stocks

| | | | |
|---|-------------------|--|-------------------|
| 1. Book/adjusted carrying value of bonds and stocks, prior year | <u>36,563,224</u> | 7. Amortization of premium | <u>56,820</u> |
| 2. Cost of bonds and stocks acquired, Column 7, Part 3 | <u>6,972,378</u> | 8. Foreign Exchange Adjustment: | |
| 3. Accrual of discount | <u>43,779</u> | 8.1 Column 15, Part 1 | |
| 4. Increase (decrease) by adjustment: | | 8.2 Column 19, Part 2 Section 1 | |
| 4.1 Columns 12 - 14, Part 1 | | 8.3 Column 16, Part 2, Section 2 | |
| 4.2 Column 15 - 17, Part 2, Section 1 | | 8.4 Column 15, Part 4 | |
| 4.3 Column 15, Part 2, Section 2 | | 9. Book/adjusted carrying value at end of current period | <u>36,223,590</u> |
| 4.4 Column 11 - 13, Part 4 | | 10. Total valuation allowance | |
| 5. Total gain (loss), Column 19, Part 4 | | 11. Subtotal (Lines 9 plus 10) | <u>36,223,590</u> |
| 6. Deduct consideration for bonds and stocks disposed of Column 7, Part 4 | <u>7,298,971</u> | 12. Total nonadmitted amounts | |
| | | 13. Statement value of bonds and stocks, current period | <u>36,223,590</u> |

NONE **Schedule P - Part 1 - Summary**

NONE **Schedule P - Part 2, 3, 4 - Summary**

SCHEDULE T - EXHIBIT OF PREMIUMS WRITTEN
Allocated by States and Territories

| States, Etc. | 1 Is Insurer Licensed? (Yes or No) | Gross Premiums, Including Policy and Membership Fees Less Return Premiums and Premiums on Policies Not Taken | | 4 Dividends Paid or Credited to Policyholders on Direct Business | 5 Direct Losses Paid (Deducting Salvage) | 6 Direct Losses Incurred | 7 Direct Losses Unpaid | 8 Finance and Service Charges Not Included in Premiums | 9 Direct Premium Written for Federal Purchasing Groups (Included in Col. 2) |
|------------------------------|---------------------------------------|--|-----------------------------|---|---|-----------------------------|---------------------------|---|--|
| | | 2 Direct Premiums Written | 3 Direct Premiums Earned | | | | | | |
| 1. Alabama | AL | NO | | | | | | | |
| 2. Alaska | AK | NO | | | | | | | |
| 3. Arizona | AZ | NO | | | | | | | |
| 4. Arkansas | AR | NO | | | | | | | |
| 5. California | CA | NO | | 1,485 | | | | | |
| 6. Colorado | CO | NO | | | | | | | |
| 7. Connecticut | CT | YES | 17,829,689 | 19,019,138 | 417,852 | 8,275,940 | 2,418,738 | 18,433,247 | 78,939 |
| 8. Delaware | DE | YES | 6,514,484 | 5,891,715 | | 1,170,419 | (943) | 3,511,618 | 28,842 |
| 9. Dist. Columbia | DC | YES | 356,430 | 304,744 | | 3,194 | (96,944) | 58,985 | 1,578 |
| 10. Florida | FL | YES | | | | 7,056 | 52,574 | 53,775 | |
| 11. Georgia | GA | YES | 7,698,953 | 7,289,069 | 1,993 | 3,739,161 | 4,471,543 | 8,111,212 | 34,086 |
| 12. Hawaii | HI | NO | | | | | | | |
| 13. Idaho | ID | NO | | | | | | | |
| 14. Illinois | IL | NO | | | | | | | |
| 15. Indiana | IN | YES | | | | | | | |
| 16. Iowa | IA | NO | | | | | | | |
| 17. Kansas | KS | NO | | | | | | | |
| 18. Kentucky | KY | YES | | | | 1,208 | (655) | 1,873 | |
| 19. Louisiana | LA | NO | | | | | | | |
| 20. Maine | ME | YES | 11,792,854 | 11,975,848 | 75,455 | 4,129,520 | 7,062,551 | 7,474,617 | 52,212 |
| 21. Maryland | MD | YES | 8,584,324 | 8,384,392 | 4,542 | 3,647,280 | 12,533,080 | 15,582,310 | 38,006 |
| 22. Massachusetts | MA | YES | 11,011,773 | 8,989,400 | 692 | 1,686,356 | 2,934,548 | 5,138,692 | 48,754 |
| 23. Michigan | MI | NO | (34,250) | (17,265) | | 146 | (2,953) | | (152) |
| 24. Minnesota | MN | NO | | | | | | | |
| 25. Mississippi | MS | NO | | | | | | | |
| 26. Missouri | MO | NO | | | | | | | |
| 27. Montana | MT | NO | | | | | | | |
| 28. Nebraska | NE | NO | | | | | | | |
| 29. Nevada | NV | NO | | | | | | | |
| 30. New Hampshire | NH | YES | 9,589,080 | 8,795,876 | 2,024 | 4,224,472 | 4,258,012 | 8,094,773 | 42,455 |
| 31. New Jersey | NJ | YES | 72,204,591 | 74,751,929 | 276,299 | 27,985,943 | 31,517,916 | 72,724,106 | 319,679 |
| 32. New Mexico | NM | NO | | | | | | | |
| 33. New York | NY | YES | 62,386,781 | 62,759,761 | 175,388 | 18,035,003 | 22,480,841 | 57,500,907 | 276,212 |
| 34. No. Carolina | NC | YES | 7,305,359 | 7,517,189 | | 5,764,101 | 2,733,895 | 8,344,054 | 32,344 |
| 35. No. Dakota | ND | NO | | | | | | | |
| 36. Ohio | OH | NO | | | | | | | |
| 37. Oklahoma | OK | NO | | | | | | | |
| 38. Oregon | OR | NO | | | | | | | |
| 39. Pennsylvania | PA | YES | 35,428,467 | 34,872,008 | 9,294 | 23,012,562 | 32,683,838 | 37,315,577 | 156,856 |
| 40. Rhode Island | RI | YES | (601) | 9,255 | 423 | | | | (3) |
| 41. So. Carolina | SC | NO | 56 | 56 | | | | | |
| 42. So. Dakota | SD | NO | | | | | | | |
| 43. Tennessee | TN | NO | | | | | | | |
| 44. Texas | TX | NO | | | | | | | |
| 45. Utah | UT | NO | | | | | | | |
| 46. Vermont | VT | YES | 5,092,552 | 5,119,714 | 6,809 | 1,795,806 | (165,759) | 4,164,632 | 22,547 |
| 47. Virginia | VA | YES | 5,210,709 | 5,098,919 | 19,420 | 3,444,355 | 2,925,749 | 7,466,122 | 23,070 |
| 48. Washington | WA | NO | | | | | | | |
| 49. West Virginia | WV | NO | | | | | | | |
| 50. Wisconsin | WI | NO | | | | | | | |
| 51. Wyoming | WY | NO | | | | | | | |
| 52. American Samoa | AS | NO | | | | | | | |
| 53. Guam | GU | NO | | | | | | | |
| 54. Puerto Rico | PR | NO | | | | | | | |
| 55. U.S. Virgin Islands | VI | NO | | | | | | | |
| 56. Northern Mariana Islands | MP | NO | | | | | | | |
| 57. Canada | CN | NO | | | | | | | |
| 58. Aggregate other alien | OT | X X X | | | | | | | |
| 59. Totals | (a) 18 | | 260,971,251 | 260,761,748 | 991,676 | 106,922,522 | 125,806,031 | 253,976,500 | 1,155,425 |

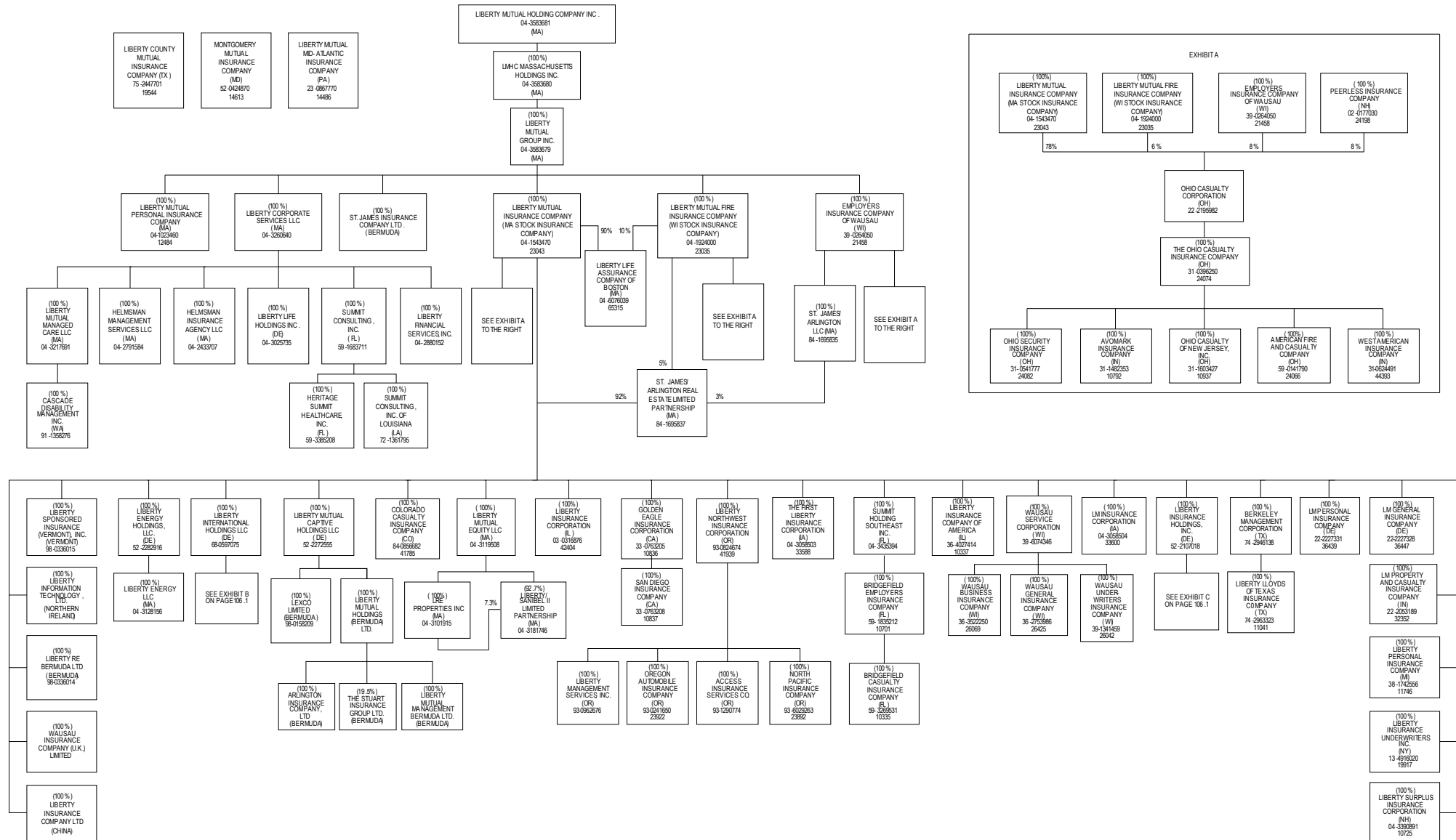
| DETAILS OF WRITE-INS | | | | | | | | | |
|---|-------|--|--|--|--|--|--|--|--|
| 5801. | X X X | | | | | | | | |
| 5802. | X X X | | | | | | | | |
| 5803. | X X X | | | | | | | | |
| 5898. Summary of remaining write-ins for Line 58 from overflow page | X X X | | | | | | | | |
| 5899. Totals (Lines 5801 through 5803 + 5898) (Line 58 above) | X X X | | | | | | | | |

Explanation of basis of allocation of premiums by states, etc.

- *Location of coverage - Fire, Allied Lines, Homeowners Multi Peril, Commercial Multi Peril, Earthquake, Boiler and Machinery
- *States of Jurisdiction under which payrolls and resulting premiums are developed - Worker's Compensation
- *Location of Principal place of garaging of each individual car - Auto Liability, Auto Physical Damage
- *Principal Location of business or location of coverage - Liability other than Auto, Fidelity
- *Point of origin of shipment or principal location of assured - Inland Marine
- *State in which employees regularly work - Group Accident and Health
- *Location of Court - Surety
- *Address of Assured - Other Accident and Health
- *Location of Properties covered - Burglary and Theft
- *Principal Location of Assured - Ocean Marine, Credit
- *Primary residence of Assured - Aircraft (all perils)

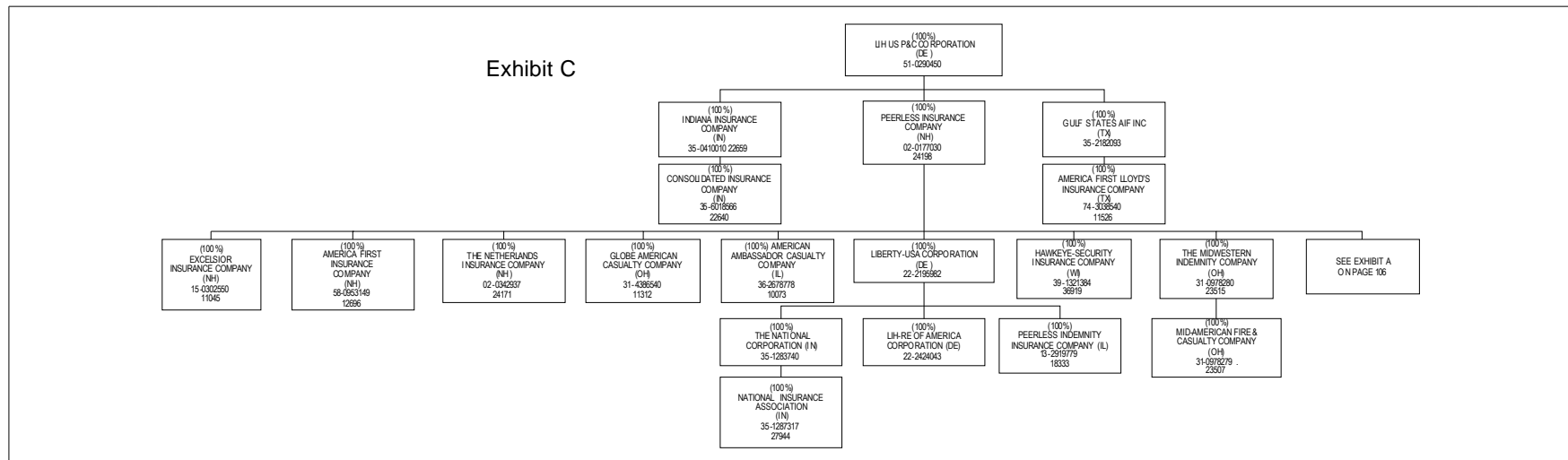
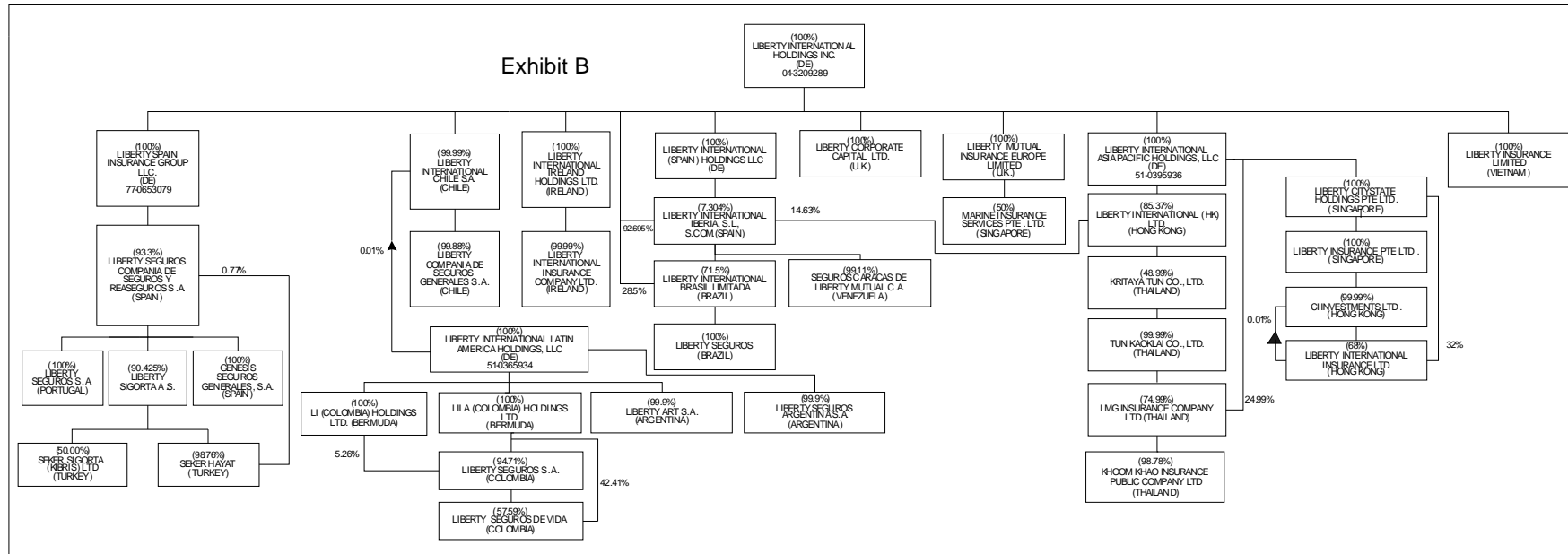
(a) Insert the number of yes responses except for Canada and Other Alien.

**SCHEDULE Y - INFORMATION CONCERNING ACTIVITIES OF INSURER MEMBERS OF A HOLDING COMPANY GROUP
PART 1 - ORGANIZATIONAL CHART**



SCHEDULE Y - INFORMATION CONCERNING ACTIVITIES OF INSURER MEMBERS OF A HOLDING COMPANY GROUP

PART 1 - ORGANIZATIONAL CHART



OVERFLOW PAGE FOR WRITE-INS

ALPHABETICAL INDEX TO PROPERTY AND CASUALTY ANNUAL STATEMENT

| | | | |
|---|-----|---|-----|
| Assets | 2 | Schedule DB - Part D - Section 3 | E21 |
| Cash Flow | 5 | Schedule DB - Part D - Verification Between Years | 31 |
| Exhibit of Capital Gains (Losses) | 12 | Schedule DB - Part E - Section 1 | E22 |
| Exhibit of Net Investment Income | 12 | Schedule DB - Part E - Verification | 31 |
| Exhibit of Nonadmitted Assets | 13 | Schedule DB - Part F - Section 1 | 32 |
| Exhibit of Premiums and Losses (State Page) | 20 | Schedule DB - Part F - Section 2 | 33 |
| Five-Year Historical Data | 18 | Schedule E - Part 1 - Cash | E23 |
| General Interrogatories | 16 | Schedule E - Part 2 - Cash Equivalents | E24 |
| Jurat Page | 1 | Schedule E - Part 3 - Special Deposits | E25 |
| Liabilities, Surplus and Other Funds | 3 | Schedule F - Part 1 | 34 |
| Notes To Financial Statements | 14 | Schedule F - Part 2 | 35 |
| Overflow Page For Write-ins | 109 | Schedule F - Part 3 | 36 |
| Schedule A - Part 1 | E01 | Schedule F - Part 4 | 37 |
| Schedule A - Part 2 | E02 | Schedule F - Part 5 | 38 |
| Schedule A - Part 3 | E03 | Schedule F - Part 6 | 39 |
| Schedule A - Verification Between Years | 21 | Schedule F - Part 7 | 40 |
| Schedule B - Part 1 | E04 | Schedule F - Part 8 | 41 |
| Schedule B - Part 2 | E05 | Schedule H - Accident and Health Exhibit - Part 1 | 42 |
| Schedule B - Verification Between Years | 21 | Schedule H - Part 5 - Health Claims | 44 |
| Schedule BA - Part 1 | E06 | Schedule H - Parts - 2, 3, and 4 | 43 |
| Schedule BA - Part 2 | E07 | Schedule P - Part 1 - Analysis of Losses and Loss Expenses | 45 |
| Schedule BA - Verification Between Years | 21 | Schedule P - Part 1A - Homeowners/Farmowners | 47 |
| Schedule D - Part 1 | E08 | Schedule P - Part 1B - Private Passenger Auto Liability/Medical | 48 |
| Schedule D - Part 1A - Section 1 | 23 | Schedule P - Part 1C - Commercial Auto/Truck Liability/Medical | 49 |
| Schedule D - Part 1A - Section 2 | 26 | Schedule P - Part 1D - Workers' Compensation | 50 |
| Schedule D - Part 2 - Section 1 | E09 | Schedule P - Part 1E - Commercial Multiple Peril | 51 |
| Schedule D - Part 2 - Section 2 | E10 | Schedule P - Part 1F - Section 1 - Medical Malpractice - Occurrence | 52 |
| Schedule D - Part 3 | E11 | Schedule P - Part 1F - Section 2 - Medical Malpractice - Claims-Made | 53 |
| Schedule D - Part 4 | E12 | Schedule P - Part 1G - Spec. Liab. (Ocean, Marine, Aircr.(A.P.), Boiler & Mach.) | 54 |
| Schedule D - Part 5 | E13 | Schedule P - Part 1H - Section 1 - Other Liability - Occurrence | 55 |
| Schedule D - Part 6 - Section 1 | E14 | Schedule P - Part 1H - Section 2 - Other Liability - Claims-Made | 56 |
| Schedule D - Part 6 - Section 2 | E14 | Schedule P - Part 1I - Spec. Prop. (Fire, A.L., Inld. Ma., Earth., Burg. & Thft.) | 57 |
| Schedule D - Summary By Country | 22 | Schedule P - Part 1J - Auto Physical Damage | 58 |
| Schedule D - Verification Between Years | 22 | Schedule P - Part 1K - Fidelity/Surety | 59 |
| Schedule DA - Part 1 | E15 | Schedule P - Part 1L - Other (Including Credit, Accident and Health) | 60 |
| Schedule DA - Part 2 - Verification Between Years | 29 | Schedule P - Part 1M - International | 61 |
| Schedule DB - Part A - Section 1 | E16 | Schedule P - Part 1N - Reinsurance | 62 |
| Schedule DB - Part A - Section 2 | E16 | Schedule P - Part 1O - Reinsurance | 63 |
| Schedule DB - Part A - Section 3 | E17 | Schedule P - Part 1P - Reinsurance | 64 |
| Schedule DB - Part A - Verification Between Years | 30 | Schedule P - Part 1R - Section 1 - Products Liability - Occurrence | 65 |
| Schedule DB - Part B - Section 1 | E17 | Schedule P - Part 1R - Section 2 - Products Liability - Claims-Made | 66 |
| Schedule DB - Part B - Section 2 | E18 | Schedule P - Part 1S - Financial Guaranty/Mortgage Guaranty | 67 |
| Schedule DB - Part B - Section 3 | E18 | Schedule P - Part 2A - Homeowners/Farmowners | 68 |
| Schedule DB - Part B - Verification Between Years | 30 | Schedule P - Part 2B - Private Passenger Auto Liability/Medical | 68 |
| Schedule DB - Part C - Section 1 | E19 | Schedule P - Part 2C - Commercial Auto/Truck Liability/Medical | 68 |
| Schedule DB - Part C - Section 2 | E19 | Schedule P - Part 2D - Workers' Compensation | 68 |
| Schedule DB - Part C - Section 3 | E20 | Schedule P - Part 2E - Commercial Multiple Peril | 68 |
| Schedule DB - Part C - Verification Between Years | 31 | Schedule P - Part 2F - Section 1 - Medical Malpractice - Occurrence | 69 |
| Schedule DB - Part D - Section 1 | E20 | Schedule P - Part 2F - Section 2 - Medical Malpractice - Claims-Made | 69 |
| Schedule DB - Part D - Section 2 | E21 | Schedule P - Part 2G - Spec. Liab. (Ocean, Marine, Aircr.(A.P.), Boiler & Mach.) | 69 |

ALPHABETICAL INDEX (Continued)

| | | | |
|---|----|--|-----|
| Schedule P - Part 2H - Section 1 - Other Liability - Occurrence | 69 | Schedule P - Part 4O - Reinsurance | 81 |
| Schedule P - Part 2H - Section 2 - Other Liability - Claims-Made | 69 | Schedule P - Part 4P - Reinsurance | 81 |
| Schedule P - Part 2I - Spec. Prop. (Fire, A.L., Inld. Ma., Earth., Burg. & Thft.) | 70 | Schedule P - Part 4R - Section 1 - Products Liability - Occurrence | 82 |
| Schedule P - Part 2J - Auto Physical Damage | 70 | Schedule P - Part 4R - Section 2 - Products Liability - Claims-Made | 82 |
| Schedule P - Part 2K - Fidelity, Surety | 70 | Schedule P - Part 4S - Financial Guaranty/Mortgage Guaranty | 82 |
| Schedule P - Part 2L - Other (Including Credit, Accident and Health) | 70 | Schedule P - Part 5A - Homeowners/Farmowners | 83 |
| Schedule P - Part 2M - International | 70 | Schedule P - Part 5B - Private Passenger Auto Liability/Medical | 84 |
| Schedule P - Part 2N - Reinsurance | 71 | Schedule P - Part 5C - Commercial Auto/Truck Liability/Medical | 85 |
| Schedule P - Part 2O - Reinsurance | 71 | Schedule P - Part 5D - Workers' Compensation | 86 |
| Schedule P - Part 2P - Reinsurance | 71 | Schedule P - Part 5E - Commercial Multiple Peril | 87 |
| Schedule P - Part 2R - Section 1 - Products Liability - Occurrence | 72 | Schedule P - Part 5F - Medical Malpractice - Claims-Made | 89 |
| Schedule P - Part 2R - Section 2 - Products Liability - Claims-Made | 72 | Schedule P - Part 5F - Medical Malpractice - Occurrence | 88 |
| Schedule P - Part 2S - Financial Guaranty/Mortgage Guaranty | 72 | Schedule P - Part 5H - Other Liability - Claims-Made | 91 |
| Schedule P - Part 3A - Homeowners/Farmowners | 73 | Schedule P - Part 5H - Other Liability - Occurrence | 90 |
| Schedule P - Part 3B - Private Passenger Auto Liability/Medical | 73 | Schedule P - Part 5R - Products Liability - Claims-Made | 93 |
| Schedule P - Part 3C - Commercial Auto/Truck Liability/Medical | 73 | Schedule P - Part 5R - Products Liability - Occurrence | 92 |
| Schedule P - Part 3D - Workers' Compensation | 73 | Schedule P - Part 6C - Commercial Auto/Truck Liability/Medical | 94 |
| Schedule P - Part 3E - Commercial Multiple Peril | 73 | Schedule P - Part 6D - Workers' Compensation | 94 |
| Schedule P - Part 3F - Section 1 - Medical Malpractice - Occurrence | 74 | Schedule P - Part 6E - Commercial Multiple Peril | 95 |
| Schedule P - Part 3F - Section 2 - Medical Malpractice - Claims-Made | 74 | Schedule P - Part 6H - Other Liability - Claims-Made | 96 |
| Schedule P - Part 3G - Spec. Liab. (Ocean, Marine, Aircr.(A.P.), Boiler & Mach.) | 74 | Schedule P - Part 6H - Other Liability - Occurrence | 95 |
| Schedule P - Part 3H - Section 1 - Other Liability - Occurrence | 74 | Schedule P - Part 6M - International | 96 |
| Schedule P - Part 3H - Section 2 - Other Liability - Claims-Made | 74 | Schedule P - Part 6N - Reinsurance | 97 |
| Schedule P - Part 3I - Spec. Prop. (Fire, A.L., Inld. Ma., Earth., Burg. & Thft.) | 75 | Schedule P - Part 6O - Reinsurance | 97 |
| Schedule P - Part 3J - Auto Physical Damage | 75 | Schedule P - Part 6R - Products Liability - Claims-Made | 98 |
| Schedule P - Part 3K - Fidelity/Surety | 75 | Schedule P - Part 6R - Products Liability - Occurrence | 98 |
| Schedule P - Part 3L - Other (Including Credit, Accident and Health) | 75 | Schedule P - Part 7A - Primary Loss Sensitive Contracts | 99 |
| Schedule P - Part 3M - International | 75 | Schedule P - Part 7B - Reinsurance Loss Sensitive Contracts | 101 |
| Schedule P - Part 3N - Reinsurance | 76 | Schedule P - Parts 2, 3 and 4 - Summary | 46 |
| Schedule P - Part 3O - Reinsurance | 76 | Schedule P Interrogatories | 103 |
| Schedule P - Part 3P - Reinsurance | 76 | Schedule T - Exhibit of Premiums Written | 104 |
| Schedule P - Part 3R - Section 1 - Products Liability - Occurrence | 77 | Schedule T - Part 2 - Interstate Compact | 105 |
| Schedule P - Part 3R - Section 2 - Products Liability - Claims-Made | 77 | Schedule Y - Info. Concerning Activities of Insurer Mmbrs. of a Holding Co. Grp. | 106 |
| Schedule P - Part 3S - Financial Guaranty/Mortgage Guaranty | 77 | Schedule Y - Part 2 - Summary of Insurer's Transactions With Any Affiliates | 107 |
| Schedule P - Part 4A - Homeowners/Farmowners | 78 | Statement of Income | 4 |
| Schedule P - Part 4B - Private Passenger Auto Liability/Medical | 78 | Summary Investment Schedule | 15 |
| Schedule P - Part 4C - Commercial Auto/Truck Liability/Medical | 78 | Underwriting and Investment Exhibit Part 1 | 6 |
| Schedule P - Part 4D - Workers' Compensation | 78 | Underwriting and Investment Exhibit Part 1A | 7 |
| Schedule P - Part 4E - Commercial Multiple Peril | 78 | Underwriting and Investment Exhibit Part 1B | 8 |
| Schedule P - Part 4F - Section 1 - Medical Malpractice - Occurrence | 79 | Underwriting and Investment Exhibit Part 2 | 9 |
| Schedule P - Part 4F - Section 2 - Medical Malpractice - Claims-Made | 79 | Underwriting and Investment Exhibit Part 2A | 10 |
| Schedule P - Part 4G - Spec. Liab. (Ocean, Marine, Aircr.(A.P.), Boiler & Mach.) | 79 | Underwriting and Investment Exhibit Part 3 | 11 |
| Schedule P - Part 4H - Section 1 - Other Liability - Occurrence | 79 | | |
| Schedule P - Part 4H - Section 2 - Other Liability - Claims-Made | 79 | | |
| Schedule P - Part 4I - Spec. Prop. (Fire, A.L., Inld. Ma., Earth., Burg. & Thft.) | 80 | | |
| Schedule P - Part 4J - Auto Physical Damage | 80 | | |
| Schedule P - Part 4K - Fidelity/Surety | 80 | | |
| Schedule P - Part 4L - Other (Including Credit, Accident and Health) | 80 | | |
| Schedule P - Part 4M - International | 80 | | |
| Schedule P - Part 4N - Reinsurance | 81 | | |