

ANNUAL STATEMENT

OF THE

Bridgefield Casualty Insurance Company

of _____

in the state of _____

TO THE

Insurance Department

OF THE

STATE OF

FOR THE YEAR ENDED

December 31, 2007

PROPERTY AND CASUALTY

2007



10335200720100100

ANNUAL STATEMENT

For the Year Ended December 31, 2007
OF THE CONDITION AND AFFAIRS OF THE

Bridgefield Casualty Insurance Company

NAIC Group Code 0111 0111 NAIC Company Code 10335 Employer's ID Number 59-3269531
(Current Period) (Prior Period)

Organized under the Laws of FLORIDA, State of Domicile or Port of Entry FLORIDA

Country of Domicile UNITED STATES OF AMERICA

Incorporated/Organized: October 7, 1994 Commenced Business: February 16, 1995

Statutory Home Office: 2310 COMMERCE POINT DRIVE LAKELAND, FL 33801
(Street and Number) (City, State and Zip Code)

Main Administrative Office: 2310 COMMERCE POINT DRIVE LAKELAND, FL 33801 863-665-6060
(Street and Number) (City, State and Zip Code) (Area Code)(Telephone Number)

Mail Address: P. O. BOX 988 LAKELAND, FL 33802
(Street and Number) (City, State and Zip Code)

Primary Location of Books and Records: 175 BERKELEY STREET BOSTON, MA 02116 617-357-9500
(Street and Number) (City, State and Zip Code) (Area Code)(Telephone Number)

Internet Website Address: www.summitholdings.com

Statutory Statement Contact: Joanne Connolly 617-357-9500 44393
(Name) (Area Code)(Telephone Number)(Extension)
joanne.connolly@libertymutual.com 617-574-5955
(E-Mail Address) (Fax Number)

OFFICERS
CHAIRMAN OF THE BOARD
GARY RICHARD GREGG

Table with 2 columns: Name, Title. Rows include GARY RICHARD GREGG (PRESIDENT & CHIEF EXECUTIVE OFFICER), EDMUND CAMPION KENEALY (SECRETARY), JAMES FRANCIS DORE (TREASURER & CHIEF FINANCIAL OFFICER).

Vice-Presidents

Table with 4 columns: Name, Title, Name, Title. Rows include MARK EDWARD FIEBRINK (EXECUTIVE VICE PRESIDENT), JOSEPH ANTHONY GILLES (EVP & CHIEF OPERATING OFFICER), ANTHONY ALEXANDER FONTANES (EVP & CHIEF INVESTMENT OFFICER).

DIRECTORS OR TRUSTEES

Table with 4 columns: Name, Title, Name, Title. Rows include JAMES FRANCIS DORE (JOHN DEREK DOYLE), GARY RICHARD GREGG (RICKY TARVER HODGES), MARK EDWARD FIEBRINK (CHRISTOPHER CHARLES MANSFIELD), JOSEPH ANTHONY GILLES.

State of Massachusetts
County of Suffolk ss

The officers of this reporting entity being duly sworn, each depose and say that they are the described officers of said reporting entity, and that on the reporting period stated above, all of the herein described assets were the absolute property of the said reporting entity, free and clear from any liens or claims thereon, except as herein stated, and that this statement, together with related exhibits, schedules and explanations therein contained, annexed or referred to, is a full and true statement of all the assets and liabilities and of the condition and affairs of the said reporting entity as of the reporting period stated above, and of its income and deductions therefrom for the period ended, and have been completed in accordance with the NAIC Annual Statement Instructions and Accounting Practices and Procedures manual except to the extent that: (1) state law may differ; or, (2) that state rules or regulations require differences in reporting not related to accounting practices and procedures, according to the best of their information, knowledge and belief, respectively. Furthermore, the scope of this attestation by the described officers also includes the related corresponding electronic filing with the NAIC, when required, that is an exact copy (except for formatting differences due to electronic filing) of the enclosed statement. The electronic filing may be requested by various regulators in lieu of or in addition to the enclosed statement.

(Signature) GARY RICHARD GREGG (Signature) EDMUND CAMPION KENEALY (Signature) JAMES FRANCIS DORE
(Printed Name) 1. 2. 3.
PRESIDENT & CHIEF EXECUTIVE OFFICER SECRETARY TREASURER & CHIEF FINANCIAL OFFICER
(Title) (Title) (Title)

Subscribed and sworn to before me this
31st day of January, 2008

a. Is this an original filing? YES [X] NO []
b. If no: 1. State the amendment number
2. Date filed
3. Number of pages attached

ASSETS

	Current Year			Prior Year
	1	2	3	4
	Assets	Nonadmitted Assets	Net Admitted Assets (Cols. 1 - 2)	Net Admitted Assets
1. Bonds (Schedule D)	44,967,627		44,967,627	49,358,547
2. Stocks (Schedule D):				
2.1 Preferred stocks				
2.2 Common stocks				
3. Mortgage loans on real estate (Schedule B):				
3.1 First liens				
3.2 Other than first liens				
4. Real estate (Schedule A):				
4.1 Properties occupied by the company (less \$ 0 encumbrances)				
4.2 Properties held for the production of income (less \$ 0 encumbrances)				
4.3 Properties held for sale (less \$ 0 encumbrances)				
5. Cash (\$ 1,301,136, Schedule E-Part 1), cash equivalents (\$ 4,999,139, Schedule E-Part 2) and short-term investments (\$ 20,165,519, Schedule DA)	26,465,794		26,465,794	13,307,551
6. Contract loans (including \$ 0 premium notes)				
7. Other invested assets (Schedule BA)				
8. Receivables for securities	15,467		15,467	25,360
9. Aggregate write-ins for invested assets				
10. Subtotals, cash and invested assets (Lines 1 to 9)	71,448,888		71,448,888	62,691,458
11. Title plants less \$ 0 charged off (for Title insurers only)				
12. Investment income due and accrued	729,769		729,769	593,647
13. Premiums and considerations:				
13.1 Uncollected premiums and agents' balances in the course of collection	3,969,963	2,376,979	1,592,984	1,763,193
13.2 Deferred premiums, agents' balances and installments booked but deferred and not yet due (including \$ 3,708,127 earned but unbilled premiums)	7,727,181	638,574	7,088,607	3,847,890
13.3 Accrued retrospective premiums	5,581,133	68,776	5,512,357	127,470
14. Reinsurance:				
14.1 Amounts recoverable from reinsurers	13,154,921		13,154,921	11,794,970
14.2 Funds held by or deposited with reinsured companies				
14.3 Other amounts receivable under reinsurance contracts				
15. Amounts receivable relating to uninsured plans				
16.1 Current federal and foreign income tax recoverable and interest thereon				
16.2 Net deferred tax asset				
17. Guaranty funds receivable or on deposit				
18. Electronic data processing equipment and software				
19. Furniture and equipment, including health care delivery assets (\$ 0)				
20. Net adjustment in assets and liabilities due to foreign exchange rates				
21. Receivables from parent, subsidiaries and affiliates	23,323,402		23,323,402	13,256,270
22. Health care (\$ 0) and other amounts receivable				
23. Aggregate write-ins for other than invested assets	25,000		25,000	27,008
24. Total assets excluding Separate Accounts, Segregated Accounts and Protected Cell Accounts (Lines 10 to 23)	125,960,257	3,084,329	122,875,928	94,101,906
25. From Separate Accounts, Segregated Accounts and Protected Cell Accounts				
26. Total (Lines 24 and 25)	125,960,257	3,084,329	122,875,928	94,101,906

DETAILS OF WRITE-INS				
0901.				
0902.				
0903.				
0998. Summary of remaining write-ins for Line 09 from overflow page				
0999. Totals (Lines 0901 through 0903 plus 0998) (Line 09 above)				
2301. Other assets	25,000		25,000	27,008
2302.				
2303.				
2398. Summary of remaining write-ins for Line 23 from overflow page				
2399. Totals (Lines 2301 through 2303 plus 2398) (Line 23 above)	25,000		25,000	27,008

LIABILITIES, SURPLUS AND OTHER FUNDS	1 Current Year	2 Prior Year
1. Losses (Part 2A, Line 34, Column 8)		
2. Reinsurance payable on paid losses and loss adjustment expenses (Schedule F, Part 1, Column 6)		
3. Loss adjustment expenses (Part 2A, Line 34, Column 9)		
4. Commissions payable, contingent commissions and other similar charges	2,991,982	1,015,778
5. Other expenses (excluding taxes, licenses and fees)	190,507	574,387
6. Taxes, licenses and fees (excluding federal and foreign income taxes)	46,265,817	37,926,016
7.1 Current federal and foreign income taxes (including \$ 0 on realized capital gains (losses))	265,389	285,325
7.2 Net deferred tax liability	66,000	40,000
8. Borrowed money \$ 0 and interest thereon \$ 0		
9. Unearned premiums (Part 1A, Line 37, Column 5) (after deducting unearned premiums for ceded reinsurance of \$ 4,985,500 and including warranty reserves of \$ 0)		
10. Advance premium	1,528,303	1,932,186
11. Dividends declared and unpaid:		
11.1 Stockholders		
11.2 Policyholders		
12. Ceded reinsurance premiums payable (net of ceding commissions)	27,014,115	18,519,032
13. Funds held by company under reinsurance treaties (Schedule F, Part 3, Column 19)		
14. Amounts withheld or retained by company for account of others		
15. Remittances and items not allocated		
16. Provision for reinsurance (Schedule F, Part 7)		
17. Net adjustments in assets and liabilities due to foreign exchange rates		
18. Drafts outstanding		
19. Payable to parent, subsidiaries and affiliates	4,556,195	4,748,068
20. Payable for securities		
21. Liability for amounts held under uninsured plans		
22. Capital notes \$ 0 and interest thereon \$ 0		
23. Aggregate write-ins for liabilities	2,447	169,401
24. Total liabilities excluding protected cell liabilities (Lines 1 through 23)	82,880,755	65,210,193
25. Protected cell liabilities		
26. Total liabilities (Lines 24 and 25)	82,880,755	65,210,193
27. Aggregate write-ins for special surplus funds		
28. Common capital stock	1,800,000	1,800,000
29. Preferred capital stock		
30. Aggregate write-ins for other than special surplus funds		
31. Surplus notes		
32. Gross paid in and contributed surplus	30,200,000	20,700,000
33. Unassigned funds (surplus)	7,995,173	6,391,713
34. Less treasury stock, at cost:		
34.1 0 shares common (value included in Line 28 \$ 0)		
34.2 0 shares preferred (value included in Line 29 \$ 0)		
35. Surplus as regards policyholders (Lines 27 to 33, less 34) (Page 4, Line 39)	39,995,173	28,891,713
36. TOTALS (Page 2, Line 26, Col. 3)	122,875,928	94,101,906

DETAILS OF WRITE-INS		
2301. Other Liabilities	2,447	
2302. Member Deposits		169,401
2303.		
2398. Summary of remaining write-ins for Line 23 from overflow page		
2399. Totals (Lines 2301 through 2303 plus 2398) (Line 23 above)	2,447	169,401
2701.		
2702.		
2703.		
2798. Summary of remaining write-ins for Line 27 from overflow page		
2799. Totals (Lines 2701 through 2703 plus 2798) (Line 27 above)		
3001.		
3002.		
3003.		
3098. Summary of remaining write-ins for Line 30 from overflow page		
3099. Totals (Lines 3001 through 3003 plus 3098) (Line 30 above)		

STATEMENT OF INCOME	1	2
	Current Year	Prior Year
UNDERWRITING INCOME		
1. Premiums earned (Part 1, Line 34, Column 4)		
DEDUCTIONS		
2. Losses incurred (Part 2, Line 34, Column 7)		
3. Loss expenses incurred (Part 3, Line 25, Column 1)		
4. Other underwriting expenses incurred (Part 3, Line 25, Column 2)		
5. Aggregate write-ins for underwriting deductions		
6. Total underwriting deductions (Lines 2 through 5)		
7. Net income of protected cells		
8. Net underwriting gain (loss) (Line 1 minus Line 6 plus Line 7)		
INVESTMENT INCOME		
9. Net investment income earned (Exhibit of Net Investment Income, Line 17)	3,958,521	3,051,160
10. Net realized capital gains (losses) less capital gains tax of \$ 505 (Exhibit of Capital Gains (Losses))	937	(6,360)
11. Net investment gain (loss) (Lines 9 + 10)	3,959,458	3,044,800
OTHER INCOME		
12. Net gain (loss) from agents' or premium balances charged off (amount recovered \$ 0 amount charged off \$ 0)		
13. Finance and service charges not included in premiums		
14. Aggregate write-ins for miscellaneous income		
15. Total other income (Lines 12 through 14)		
16. Net income before dividends to policyholders, after capital gains tax and before all other federal and foreign income taxes (Lines 8 + 11 + 15)	3,959,458	3,044,800
17. Dividends to policyholders		
18. Net income, after dividends to policyholders, after capital gains tax and before all other federal and foreign income taxes (Line 16 minus Line 17)	3,959,458	3,044,800
19. Federal and foreign income taxes incurred	1,373,831	1,032,635
20. Net income (Line 18 minus Line 19) (to Line 22)	2,585,627	2,012,165
CAPITAL AND SURPLUS ACCOUNT		
21. Surplus as regards policyholders, December 31 prior year (Page 4, Line 39, Column 2)	28,891,713	27,983,976
22. Net income (from Line 20)	2,585,627	2,012,165
23. Net transfers (to) from Protected Cell accounts		
24. Change in net unrealized capital gains or (losses) less capital gains tax of \$ 0		
25. Change in net unrealized foreign exchange capital gain (loss)		
26. Change in net deferred income tax	(26,000)	(826,000)
27. Change in nonadmitted assets (Exhibit of Nonadmitted Assets, Line 26, Col. 3)	(956,167)	269,572
28. Change in provision for reinsurance (Page 3, Line 16, Column 2 minus Column 1)		
29. Change in surplus notes		
30. Surplus (contributed to) withdrawn from protected cells		
31. Cumulative effect of changes in accounting principles		
32. Capital changes:		
32.1 Paid in		
32.2 Transferred from surplus (Stock Dividend)		
32.3 Transferred to surplus		
33. Surplus adjustments:		
33.1 Paid in	9,500,000	
33.2 Transferred to capital (Stock Dividend)		
33.3 Transferred from capital		
34. Net remittances from or (to) Home Office		
35. Dividends to stockholders		(548,000)
36. Change in treasury stock (Page 3, Lines 34.1 and 34.2, Column 2 minus Column 1)		
37. Aggregate write-ins for gains and losses in surplus		
38. Change in surplus as regards policyholders for the year (Lines 22 through 37)	11,103,460	907,737
39. Surplus as regards policyholders, December 31 current year (Line 21 plus Line 38) (Page 3, Line 35)	39,995,173	28,891,713

DETAILS OF WRITE-INS		
0501.		
0502.		
0503.		
0598. Summary of remaining write-ins for Line 5 from overflow page		
0599. Totals (Lines 0501 through 0503 plus Line 0598) (Line 5 above)		
1401.		
1402.		
1403.		
1498. Summary of remaining write-ins for Line 14 from overflow page		
1499. Totals (Lines 1401 through 1403 plus Line 1498) (Line 14 above)		
3701.		
3702.		
3703.		
3798. Summary of remaining write-ins for Line 37 from overflow page		
3799. Totals (Lines 3701 through 3703 plus Line 3798) (Line 37 above)		

CASH FLOW

	1	2
Cash from Operations	Current Year	Prior Year
1. Premiums collected net of reinsurance	(1,320,362)	22,854,258
2. Net investment income	3,873,541	2,899,830
3. Miscellaneous income		
4. Total (Lines 1 through 3)	2,553,179	25,754,088
5. Benefit and loss related payments	1,359,951	11,970,209
6. Net transfers to Separate Accounts, Segregated Accounts and Protected Cell Accounts		
7. Commissions, expenses paid and aggregate write-ins for deductions	(9,932,125)	(2,171,340)
8. Dividends paid to policyholders		
9. Federal and foreign income taxes paid (recovered) net of \$ 0 tax on capital gains (losses)	1,394,272	1,046,344
10. Total (Lines 5 through 9)	(7,177,902)	10,845,213
11. Net cash from operations (Line 4 minus Line 10)	9,731,081	14,908,875
Cash from Investments		
12. Proceeds from investments sold, matured or repaid:		
12.1 Bonds	9,268,100	4,314,824
12.2 Stocks		
12.3 Mortgage loans		
12.4 Real estate		
12.5 Other invested assets		
12.6 Net gains or (losses) on cash, cash equivalents and short-term investments		(9,186)
12.7 Miscellaneous proceeds	9,893	(8,335)
12.8 Total investment proceeds (Lines 12.1 to 12.7)	9,277,993	4,297,303
13. Cost of investments acquired (long-term only):		
13.1 Bonds	4,926,880	15,423,084
13.2 Stocks		
13.3 Mortgage loans		
13.4 Real estate		
13.5 Other invested assets		
13.6 Miscellaneous applications		
13.7 Total investments acquired (Lines 13.1 to 13.6)	4,926,880	15,423,084
14. Net increase (decrease) in contract loans and premium notes		
15. Net cash from investments (Line 12.8 minus Line 13.7 minus Line 14)	4,351,113	(11,125,781)
Cash from Financing and Miscellaneous Sources		
16. Cash provided (applied):		
16.1 Surplus notes, capital notes		
16.2 Capital and paid in surplus, less treasury stock	9,500,000	
16.3 Borrowed funds		
16.4 Net deposits on deposit-type contracts and other insurance liabilities		
16.5 Dividends to stockholders		548,000
16.6 Other cash provided (applied)	(10,423,951)	2,536,079
17. Net cash from financing and miscellaneous sources (Lines 16.1 to 16.4 minus Line 16.5 plus Line 16.6)	(923,951)	1,988,079
RECONCILIATION OF CASH, CASH EQUIVALENTS AND SHORT-TERM INVESTMENTS		
18. Net change in cash, cash equivalents and short-term investments (Line 11, plus Lines 15 and 17)	13,158,243	5,771,173
19. Cash, cash equivalents and short-term investments:		
19.1 Beginning of year	13,307,551	7,536,378
19.2 End of year (Line 18 plus Line 19.1)	26,465,794	13,307,551

Note: Supplemental disclosures of cash flow information for non-cash transactions:

20.0001.		
20.0002.		
20.0003.		

NONE Underwriting and Investment Exhibit - Part 1

NONE Underwriting and Investment Exhibit - Part 1A

UNDERWRITING AND INVESTMENT EXHIBIT

PART 1B - PREMIUMS WRITTEN

Line of Business	1 Direct Business (a)	Reinsurance Assumed		Reinsurance Ceded		6 Net Premiums Written Cols. 1 + 2 + 3 - 4 - 5
		2 From Affiliates	3 From Non- Affiliates	4 To Affiliates	5 To Non- Affiliates	
1. Fire						
2. Allied lines						
3. Farmowners multiple peril						
4. Homeowners multiple peril						
5. Commercial multiple peril						
6. Mortgage guaranty						
8. Ocean marine						
9. Inland marine						
10. Financial guaranty						
11.1 Medical malpractice - occurrence						
11.2 Medical malpractice - claims-made						
12. Earthquake						
13. Group accident and health						
14. Credit accident and health (group and individual)						
15. Other accident and health						
16. Workers' compensation	290,315,538		13,642,241	303,957,779		
17.1 Other liability - occurrence						
17.2 Other liability - claims-made						
18.1 Products liability - occurrence						
18.2 Products liability - claims-made						
19.1, 19.2 Private passenger auto liability						
19.3, 19.4 Commercial auto liability						
21. Auto physical damage						
22. Aircraft (all perils)						
23. Fidelity						
24. Surety						
26. Burglary and theft						
27. Boiler and machinery						
28. Credit						
29. International						
30. Reinsurance-Nonproportional Assumed Property	X X X					
31. Reinsurance-Nonproportional Assumed Liability	X X X					
32. Reinsurance-Nonproportional Assumed Financial Lines	X X X					
33. Aggregate write-ins for other lines of business						
34. TOTALS	290,315,538		13,642,241	303,957,779		

DETAILS OF WRITE-INS						
3301.						
3302.						
3303.						
3398. Summary of remaining write-ins for Line 33 from overflow page						
3399. Totals (Lines 3301 through 3303 plus 3398) (Line 33 above)						

(a) Does the company's direct premiums written include premiums recorded on an installment basis? Yes [X] No []
 If yes: 1. The amount of such installment premiums \$ 290,315,538
 2. Amount at which such installment premiums would have been reported had they been recorded on an annualized basis \$ 317,711,633

**UNDERWRITING AND INVESTMENT EXHIBIT
PART 2A - UNPAID LOSSES AND LOSS ADJUSTMENT EXPENSES**

Line of Business	Reported Losses				Incurred But Not Reported			8 Net Losses Unpaid (Cols. 4 + 5 + 6 - 7)	9 Unpaid Loss Adjustment Expenses
	1 Direct	2 Reinsurance Assumed	3 Deduct Reinsurance Recoverable from Authorized and Unauthorized Companies	4 Net Losses Excl. Incurred But Not Reported (Cols. 1 + 2 - 3)	5 Direct	6 Reinsurance Assumed	7 Reinsurance Ceded		
1. Fire									
2. Allied lines									
3. Farmowners multiple peril									
4. Homeowners multiple peril									
5. Commercial multiple peril	831,447		831,447						
6. Mortgage guaranty									
8. Ocean marine									
9. Inland marine									
10. Financial guaranty									
11.1 Medical malpractice - occurrence									
11.2 Medical malpractice - claims - made									
12. Earthquake									
13. Group accident and health								(a)	
14. Credit accident and health (group and individual)									
15. Other accident and health								(a)	
16. Workers' compensation	106,656,703	6,641,650	113,298,353		221,982,387	28,360,826	250,343,213		
17.1 Other liability - occurrence									
17.2 Other liability - claims - made									
18.1 Products liability - occurrence									
18.2 Products liability - claims - made									
19.1, 19.2 Private passenger auto liability									
19.3, 19.4 Commercial auto liability									
21. Auto physical damage									
22. Aircraft (all perils)									
23. Fidelity									
24. Surety									
26. Burglary and theft									
27. Boiler and machinery									
28. Credit									
29. International									
30. Reinsurance-Nonproportional Assumed Property	X X X				X X X				
31. Reinsurance-Nonproportional Assumed Liability	X X X				X X X				
32. Reinsurance-Nonproportional Assumed Financial Lines	X X X				X X X				
33. Aggregate write-ins for other lines of business									
34. TOTALS	107,488,150	6,641,650	114,129,800		221,982,387	28,360,826	250,343,213		

DETAILS OF WRITE-INS									
3301.									
3302.									
3303.									
3398. Summary of remaining write-ins for Line 33 from overflow page									
3399. Totals (Lines 3301 through 3303 + 3398) (Line 33 above)									

(a) Including \$ 0 for present value of life indemnity claims.

**UNDERWRITING AND INVESTMENT EXHIBIT
PART 3 - EXPENSES**

	1 Loss Adjustment Expenses	2 Other Underwriting Expenses	3 Investment Expenses	4 Total
1. Claim adjustment services:				
1.1 Direct	19,055,173			19,055,173
1.2 Reinsurance assumed	97,402			97,402
1.3 Reinsurance ceded	19,152,575			19,152,575
1.4 Net claim adjustment service (1.1 + 1.2 - 1.3)				
2. Commission and brokerage:				
2.1 Direct, excluding contingent		29,959,966		29,959,966
2.2 Reinsurance assumed, excluding contingent		4,823,136		4,823,136
2.3 Reinsurance ceded, excluding contingent		91,012,943		91,012,943
2.4 Contingent-direct				
2.5 Contingent-reinsurance assumed				
2.6 Contingent-reinsurance ceded				
2.7 Policy and membership fees				
2.8 Net commission and brokerage (2.1 + 2.2 - 2.3 + 2.4 + 2.5 - 2.6 + 2.7)		(56,229,841)		(56,229,841)
3. Allowances to manager and agents				
4. Advertising		522,165	119	522,284
5. Boards, bureaus and associations		780,954	1	780,955
6. Surveys and underwriting reports			23	23
7. Audit of assureds' records		179,492		179,492
8. Salary and related items:				
8.1 Salaries		19,301,245	18,031	19,319,276
8.2 Payroll taxes		1,408,386	844	1,409,230
9. Employee relations and welfare		5,808,222	1,101	5,809,323
10. Insurance		106,992	171	107,163
11. Directors' fees				
12. Travel and travel items		1,930,551	299	1,930,850
13. Rent and rent items		1,714,204	252	1,714,456
14. Equipment		178,943	322	179,265
15. Cost or depreciation of EDP equipment and software			97	97
16. Printing and stationery		652,354	45	652,399
17. Postage, telephone and telegraph, exchange and express		1,022,085	86	1,022,171
18. Legal and auditing		204,914	2,410	207,324
19. Totals (Lines 3 to 18)		33,810,507	23,801	33,834,308
20. Taxes, licenses and fees:				
20.1 State and local insurance taxes deducting guaranty association credits of \$ 0		22,220,654		22,220,654
20.2 Insurance department licenses and fees				
20.3 Gross guaranty association assessments				
20.4 All other (excluding federal and foreign income and real estate)				
20.5 Total taxes, licenses and fees (20.1 + 20.2 + 20.3 + 20.4)		22,220,654		22,220,654
21. Real estate expenses				
22. Real estate taxes				
23. Reimbursements by uninsured plans				
24. Aggregate write-ins for miscellaneous expenses		198,680	996	199,676
25. Total expenses incurred			24,797 (a)	24,797
26. Less unpaid expenses-current year		49,448,306		49,448,306
27. Add unpaid expenses-prior year		39,516,181		39,516,181
28. Amounts receivable relating to uninsured plans, prior year				
29. Amounts receivable relating to uninsured plans, current year				
30. TOTAL EXPENSES PAID (Lines 25 - 26 + 27 - 28 + 29)		(9,932,125)	24,797	(9,907,328)

DETAILS OF WRITE-INS				
2401. Other expenses		198,680	996	199,676
2402.				
2403.				
2498. Summary of remaining write-ins for Line 24 from overflow page				
2499. Totals (Lines 2401 through 2403 plus 2498) (Line 24 above)		198,680	996	199,676

(a) Includes management fees of \$ 25,484 to affiliates and \$ 0 to non-affiliates.

EXHIBIT OF NET INVESTMENT INCOME

	1 Collected During Year	2 Earned During Year
1. U.S. Government bonds	(a) 1,772,435	1,750,424
1.1 Bonds exempt from U.S. tax	(a) (3,988)	18,512
1.2 Other bonds (unaffiliated)	(a) 411,842	388,090
1.3 Bonds of affiliates	(a)	
2.1 Preferred stocks (unaffiliated)	(b)	
2.11 Preferred stocks of affiliates	(b)	
2.2 Common stocks (unaffiliated)		
2.21 Common stocks of affiliates		
3. Mortgage loans	(c)	
4. Real estate	(d)	
5. Contract loans		
6. Cash, cash equivalents and short-term investments	(e) 1,668,939	1,828,324
7. Derivative instruments	(f)	
8. Other invested assets		
9. Aggregate write-ins for investment income	(2,033)	(2,033)
10. Total gross investment income	3,847,195	3,983,317
11. Investment expenses		(g) 24,796
12. Investment taxes, licenses and fees, excluding federal income taxes		(g)
13. Interest expense		(h)
14. Depreciation on real estate and other invested assets		(i)
15. Aggregate write-ins for deductions from investment income		
16. Total deductions (Lines 11 through 15)		24,796
17. Net investment income (Line 10 minus Line 16)		3,958,521
DETAILS OF WRITE-INS		
0901. Miscellaneous Income/(Expense)	(2,033)	(2,033)
0902.		
0903.		
0998. Summary of remaining write-ins for Line 9 from overflow page		
0999. Totals (Lines 0901 through 0903) plus 0998 (Line 9, above)	(2,033)	(2,033)
1501.		
1502.		
1503.		
1598. Summary of remaining write-ins for Line 15 from overflow page		
1599. Totals (Lines 1501 through 1503) plus 1598 (Line 15, above)		

- (a) Includes \$ 46,186 accrual of discount less \$ 97,327 amortization of premium and less \$ 48,354 paid for accrued interest on purchases.
- (b) Includes \$ 0 accrual of discount less \$ 0 amortization of premium and less \$ 0 paid for accrued dividends on purchases.
- (c) Includes \$ 0 accrual of discount less \$ 0 amortization of premium and less \$ 0 paid for accrued interest on purchases.
- (d) Includes \$ 0 for company's occupancy of its own buildings; and excludes \$ 0 interest on encumbrances.
- (e) Includes \$ 322,397 accrual of discount less \$ 0 amortization of premium and less \$ 178,618 paid for accrued interest on purchases.
- (f) Includes \$ 0 accrual of discount less \$ 0 amortization of premium.
- (g) Includes \$ 0 investment expenses and \$ 0 investment taxes, licenses and fees, excluding federal income taxes, attributable to segregated and Separate Accounts.
- (h) Includes \$ 0 interest on surplus notes and \$ 0 interest on capital notes.
- (i) Includes \$ 0 depreciation on real estate and \$ 0 depreciation on other invested assets.

EXHIBIT OF CAPITAL GAINS (LOSSES)

	1 Realized Gain (Loss) On Sales or Maturity	2 Other Realized Adjustments	3 Total Realized Capital Gain (Loss) (Columns 1 + 2)	4 Change in Unrealized Capital Gain (Loss)	5 Change in Unrealized Foreign Exchange Capital Gain (Loss)
1. U.S. Government bonds	1,442		1,442		
1.1 Bonds exempt from U.S. tax					
1.2 Other bonds (unaffiliated)					
1.3 Bonds of affiliates					
2.1 Preferred stocks (unaffiliated)					
2.11 Preferred stocks of affiliates					
2.2 Common stocks (unaffiliated)					
2.21 Common stocks of affiliates					
3. Mortgage loans					
4. Real estate					
5. Contract loans					
6. Cash, cash equivalents and short-term investments					
7. Derivative instruments					
8. Other invested assets					
9. Aggregate write-ins for capital gains (losses)					
10. Total capital gains (losses)	1,442		1,442		

DETAILS OF WRITE-INS					
0901.					
0902.					
0903.					
0998. Summary of remaining write-ins for Line 9 from overflow page					
0999. Totals (Lines 0901 through 0903) plus 0998 (Line 9, above)					

EXHIBIT OF NONADMITTED ASSETS

	1	2	3
	Current Year Total Nonadmitted Assets	Prior Year Total Nonadmitted Assets	Change in Total Nonadmitted Assets (Col. 2 - Col. 1)
1. Bonds (Schedule D)			
2. Stocks (Schedule D):			
2.1 Preferred stocks			
2.2 Common stocks			
3. Mortgage loans on real estate (Schedule B):			
3.1 First liens			
3.2 Other than first liens			
4. Real estate (Schedule A):			
4.1 Properties occupied by the company			
4.2 Properties held for the production of income			
4.3 Properties held for sale			
5. Cash (Schedule E-Part 1), cash equivalents (Schedule E-Part 2) and short-term investments (Schedule DA)			
6. Contract loans			
7. Other invested assets (Schedule BA)			
8. Receivables for securities			
9. Aggregate write-ins for invested assets			
10. Subtotals, cash and invested assets (Lines 1 to 9)			
11. Title plants (for Title insurers only)			
12. Investment income due and accrued			
13. Premiums and considerations:			
13.1 Uncollected premiums and agents' balances in the course of collection	2,376,979	1,674,946	(702,033)
13.2 Deferred premiums, agents' balances and installments booked but deferred and not yet due	638,574	451,582	(186,992)
13.3 Accrued retrospective premiums	68,776	1,634	(67,142)
14. Reinsurance:			
14.1 Amounts recoverable from reinsurers			
14.2 Funds held by or deposited with reinsured companies			
14.3 Other amounts receivable under reinsurance contracts			
15. Amounts receivable relating to uninsured plans			
16.1 Current federal and foreign income tax recoverable and interest thereon			
16.2 Net deferred tax asset			
17. Guaranty funds receivable or on deposit			
18. Electronic data processing equipment and software			
19. Furniture and equipment, including health care delivery assets			
20. Net adjustment in assets and liabilities due to foreign exchange rates			
21. Receivables from parent, subsidiaries and affiliates			
22. Health care and other amounts receivable			
23. Aggregate write-ins for other than invested assets			
24. Total assets excluding Separate Accounts, Segregated Accounts and Protected Cell Accounts (Lines 10 to 23)	3,084,329	2,128,162	(956,167)
25. From Separate Accounts, Segregated Accounts and Protected Cell Accounts			
26. Total (Lines 24 and 25)	3,084,329	2,128,162	(956,167)

DETAILS OF WRITE-INS			
0901.			
0902.			
0903.			
0998. Summary of remaining write-ins for Line 09 from overflow page			
0999. Totals (Lines 0901 through 0903 plus 0998) (Line 09 above)			
2301.			
2302.			
2303.			
2398. Summary of remaining write-ins for Line 23 from overflow page			
2399. Totals (Lines 2301 through 2303 plus 2398) (Line 23 above)			

NOTES TO FINANCIAL STATEMENTS

Note 1- Summary of Significant Accounting Policies

A. Accounting Practices

Effective January 1, 2001, and subject to any deviations prescribed or permitted by the Florida Department of Insurance, the accompanying financial statements of Bridgefield Casualty Insurance Company (the "Company") have been prepared in conformity with the National Association of Insurance Commissioners ("NAIC") *Accounting Practices and Procedures Manual* ("APP Manual").

B. Use of Estimates in the Preparation of the Financial Statements

The preparation of financial statements requires management to make estimates and assumptions that affect the reported amounts of assets, liabilities, revenues, and expenses. It also requires estimates in the disclosure of contingent assets and liabilities. Actual results could differ from these estimates.

C. Accounting Policies

Premiums are earned over the terms of the related policies and reinsurance contracts. Unearned premium reserves are established to cover the unexpired portion of premiums written. Such reserves are computed by pro-rata methods. Expenses incurred in connection with acquiring new insurance business, including acquisition costs such as sales commissions, are charged to operations as incurred. Expenses incurred are reduced for ceding allowances received or receivable.

In addition, the Company uses the following accounting policies:

1. Short term investments are carried at cost, adjusted where appropriate for amortization of premium or discount, or market as specified by the Purposes and Procedures Manual of the NAIC Securities Valuation Office (SVO Manual).
2. Bonds are carried at cost, adjusted where appropriate for amortization of premium or discount, or market as specified by the Purposes and Procedures Manual of the NAIC Securities Valuation Office (SVO Manual).
3. The Company does not own common stocks.
4. The Company does not own preferred stocks
5. The Company does not own mortgage loans.
6. Mortgage backed/asset backed securities are stated at amortized cost or market based on guidance in the Purposes and Procedures Manual of the NAIC Securities Valuation Office (SVO Manual). Prepayment assumptions for mortgage backed/asset backed securities are updated monthly using the Bloomberg data service. The retrospective adjustment method is used to value all mortgage backed/asset backed securities.
7. The Company does not own any subsidiaries, controlled, or affiliated entities.
8. The Company does not own any joint ventures, partnerships, or limited liability companies.
9. Derivative securities refer to Note 8.
10. Refer to Note 29.
11. Unpaid losses and loss adjustment expenses include an amount determined from individual case estimates and loss reports and an amount, based on past experience, for losses incurred but not reported. Such liabilities are necessarily based on assumptions and estimates, and while management believes the amount is adequate, the ultimate liability may be in excess of or less than the amount provided. The methods for making such estimates and for establishing the resulting liability are continually reviewed and follow current standards of practice. Any adjustments to the liability are reflected in the period that they are determined.
12. The Company did not change its capitalization policy in 2007.
13. The Company has no pharmaceutical rebate receivables.

Note 2- Accounting Changes and Correction of Errors

- A. There were no material changes in accounting principle or correction of errors during the year.

Note 3- Business Combinations and Goodwill

A. Statutory Purchase Method

The Company did not enter into any statutory purchases during the year.

B. Statutory Mergers

The Company did not enter into any statutory mergers during the year.

C. Impairment Loss

Not applicable

NOTES TO FINANCIAL STATEMENTS

Note 4- Discontinued Operations

The Company has no discontinued operations to report.

Note 5- Investments

A. Mortgage Loans, including Mezzanine Real Estate Loans

The Company has no mortgage loans.

B. Troubled Debt Restructuring for Creditors

Not applicable

C. Reverse Mortgages

The Company has no reverse mortgages.

D. Loan-Backed Securities

1. The Company elected to use the book value as of January 1, 1994 as the cost for applying the retrospective adjustment method to securities purchased prior to that date, where historical cash flows are not readily available.
2. Prepayment speed assumptions are updated monthly with data sourced from the Bloomberg data service.
3. The Company had no negative yield situations requiring a change from the retrospective to prospective method.

E. Repurchase Agreements

The Company did not enter into any repurchase agreements during the year.

F. Real Estate

The Company does not own real estate.

G. Investments in Low-Income Housing Tax Credits

The Company does not hold investments in low-income housing tax credits.

Note 6- Joint Ventures, Partnerships & Limited Liability Companies

A. The Company has no investments in joint ventures, partnerships, or limited liability companies.

B. Impairments on joint ventures, partnerships and limited liability companies

Not applicable

Note 7- Investment Income

A. Accrued Investment Income

All investment income due and accrued over 90 days past due is excluded from Surplus.

B. Amounts Nonadmitted

No amounts were excluded as of December 31, 2007.

Note 8- Derivative Instruments

The Company's investment activities do not include derivatives. However, the Company may acquire derivatives as additions to bond, common stock, or preferred stock investments. These derivatives are ancillary to the overall investment and are immaterial to the underlying investment portfolio.

Note 9 - Income Taxes

A. The components of the net deferred tax assets and liabilities recognized in the Company's Assets, Liabilities, Surplus and Other Funds are as follows:

	December 31, 2007	December 31, 2006	Change
Total of gross deferred tax assets	10,000	2,000	8,000
Total of deferred tax liabilities	(76,000)	(42,000)	(34,000)
Net deferred tax asset (liability)	(66,000)	(40,000)	(26,000)
Net deferred tax asset non-admitted	0	0	0
Net deferred tax asset (liability)	(66,000)	(40,000)	(26,000)

B. The Company does not have any deferred tax liabilities described in SSAP No. 10, Income Taxes, paragraph 6d.

NOTES TO FINANCIAL STATEMENTS

C. The provisions for incurred taxes on earnings for the years ended December 31 are:

	2007	2006
Federal tax on operations	1,373,831	1,032,635
Net operating loss benefit	0	0
Foreign tax on operations	0	0
Income tax incurred on operations	1,373,831	1,032,635
Tax on capital (losses) gains	505	(3,425)
Total income tax incurred	1,374,336	1,029,210

The Company's deferred tax assets and liabilities result primarily from the reversal of discount accretion on bonds.

The change in deferred income taxes is comprised of the following:

	2007
Change in net deferred income tax (without unrealized gain or loss)	(26,000)
Tax effect of unrealized (gains) losses	0
Total change in net deferred income tax	(26,000)

D. Effective tax rates approximate the current statutory rate of 35%.

E. The amount of Federal income taxes incurred and available for recoupment in the event of future losses is \$1,320,000 from the current year and \$968,000 from the preceding year.

The Company had no net loss carryforward available to offset future net income subject to Federal income taxes.

F. The Company's Federal income tax return is consolidated with the following entities:

Access Insurance Services, Co.	Liberty Mutual Group Inc.
Ambco Capital Corporation	Liberty Mutual Holding Company, Inc.
America First Insurance Company	Liberty Mutual Insurance Company
America First Lloyds Insurance Company	Liberty Mutual Managed Care, Inc.
American Ambassador Casualty Company	Liberty Mutual Personal Insurance Company
American Fire & Casualty Insurance Company *	Liberty Northwest Insurance Corporation
Avomark Insurance Company *	Liberty Personal Insurance Company
Berkeley Holding Company Associates, Inc.	Liberty RE (Bermuda) Limited
Berkeley Management Corporation	Liberty Real Estate Corporation
Bridgefield Casualty Insurance Company	Liberty Sponsored Insurance (Vermont) Inc.
Bridgefield Employers Insurance Company	Liberty Surplus Insurance Corporation
Capitol Agency, Inc. (Arizona corporation)	Liberty-USA Corporation
Capitol Agency, Inc. (Ohio corporation)	LIH-Re of America Corporation
Capitol Agency, Inc. (Tennessee corporation)	LIH U.S. P&C Corporation
Cascade Disability Management, Inc.	LIIA Insurance Agency, Inc.
Colorado Casualty Insurance Company	LIU Specialty Insurance Agency, Inc.
Companies Agency Insurance Services of California	LLS Insurance Agency of Nevada, Inc.
Companies Agency of Alabama, Inc.	LM General Insurance Company
Companies Agency of Georgia, Inc.	LM Insurance Corporation
Companies Agency of Kentucky, Inc.	LM Personal Insurance Company
Companies Agency of Massachusetts, Inc.	LM Property & Casualty Insurance Company
Companies Agency of Michigan, Inc.	LMHC Massachusetts Holding, Inc.
Companies Agency of New York, Inc.	LRE Properties, Inc.
Companies Agency of Pennsylvania, Inc.	Mid-American Agency, Inc.
Companies Agency of Phoenix, Inc.	Mid-American Fire and Casualty Company
Consolidated Insurance Company	Missouri Agency, Inc.
Copley Venture Capital, Inc.	North Pacific Insurance Company
Countrywide Services Corporation	Oregon Automobile Insurance Company
Diversified Settlements, Inc.	OCASCO Budget, Inc *
Employers Insurance Company of Wausau	OCI Printing, Inc.*
Excelsior Insurance Company	Ohio Casualty Corporation *
Florida State Agency, Inc.	Ohio Casualty Insurance Company *
Globe American Casualty Company	Ohio Casualty of New Jersey, Inc *
Golden Eagle Insurance Corporation	Ohio Life Brokerage Services, Inc.*
Gulf States AIF, Inc.	Ohio Security Insurance Company *
Hawkeye-Security Insurance Company	Peerless Indemnity Insurance Company
Helmsman Insurance Agency of Illinois, Inc.	Peerless Insurance Company
Helmsman Insurance Agency of Texas, Inc.	San Diego Insurance Company
Heritage-Summit Healthcare of Florida, Inc.	State Agency, Inc. (Indiana corporation)
Indiana Insurance Company	State Agency, Inc. (Wisconsin corporation)
LEXCO Limited	St. James Insurance Company
Liberty Assignment Corporation	Summit Consulting, Inc.
Liberty Energy Canada, Inc. *	Summit Consulting, Inc. of Louisiana
Liberty Financial Services, Inc.	Summit Holding Southeast, Inc.
Liberty Hospitality Group, Inc.	The First Liberty Insurance Corporation
Liberty Insurance Company of America	The Midwestern Indemnity Company
Liberty Insurance Corporation	The National Corporation
Liberty Insurance Holdings, Inc.	The Netherlands Insurance Company
Liberty Insurance Underwriters, Inc.	Wausau Service Corporation

NOTES TO FINANCIAL STATEMENTS

Liberty Life Assurance Company of Boston
 Liberty Life Holdings, Inc.
 Liberty Lloyds of Texas Insurance Company
 Liberty Management Services, Inc.
 Liberty Mexico Holdings, Inc.
 Liberty Mutual Fire Insurance Company

Wausau Signature Agency, Inc.
 Wausau Business Insurance Company
 Wausau General Insurance Company
 Wausau Underwriters Insurance Company
 West American Insurance Company *

* This company joined the consolidated group in 2007 and its activity from the date it joined the group is included in the consolidated return.

The method of federal income tax allocation is subject to a written agreement. Allocation is based upon separate return calculations with credit applied for losses as appropriate. The Company has the enforceable right to recoup prior year payments in the event of future losses.

Note 10- Information concerning Parent, Subsidiaries and Affiliates

- A. All of the outstanding shares of capital stock of the Company are held by Bridgefield Employers Insurance Company, a Florida corporation, which is wholly owned by Summit Holdings Southeast, Inc., a Florida corporation. Summit Holdings Southeast, Inc. is wholly owned by Liberty Mutual Insurance Company ("LMIC") an insurance company incorporated in Massachusetts. The ultimate parent of LMIC is Liberty Mutual Holding Company, Inc., a Massachusetts company.
- B. Transactions entered into by the Company with its affiliates are described on Schedule Y Part 2.
- C. The Company received a capital contribution in the amount of \$9,500,000 from its parent, Bridgefield Employers Insurance Company.
- D. At December 31, 2007 the company reported \$ 18,767,207 due from affiliates. In general the terms of the inter-company arrangements require settlement at least quarterly.
- E. The Company did not have any material contingent exposures of assets to liabilities as a result of guarantees or undertakings for the benefits of an affiliate.
- F. The Company entered into investment management agreements, effective December 31, 2003, with Liberty Mutual Insurance Company (LMIC), and effective May 1, 2000 with Liberty Mutual Investment Advisors LLC (LMIA). Under these agreements, LMIC and LMIA provide investment management services to the Company.

The Company entered into a cash management agreement with LMIA effective January 1, 2000.

The Company is party to a Federal Tax Sharing Agreement between LMIC and affiliates (see Note 9F).

See note 25 for information regarding an inter-company reinsurance agreement.

The Company entered into a management services agreement, effective December 15, 2001, with Liberty Mutual Insurance Company (LMIC). Under the agreement, LMIC may provide services related to common management functions including, but not limited to, accounting, financial, tax and auditing, information technology and support, purchasing, payroll and employee benefits, policy administration, real estate management, legal, general administration, as well as consulting and other services as the parties may request.

- G. The Company is part of a holding company structure as illustrated in Schedule Y part 1.
- H. The Company does not own shares of any upstream intermediate or ultimate parent, either directly or indirectly via a downstream subsidiary, controlled or affiliated company.
- I. The Company has no investments in subsidiary, controlled or affiliated companies.
- J. Impairment of subsidiaries
 Refer to 10 I
- K. Investment in foreign insurance subsidiaries.
 Refer to 10 I
- L. Investment in downstream noninsurance holding companies.
 Refer to 10 I

Note 11- Debt

- A. The Company has no capital notes.
- B. The Company has no outstanding borrowed money.

Note 12- Retirement Plans, Deferred Compensation, Postemployment Benefits and Compensated Absences and Other Postretirement Benefit Plans

The Company does not have any direct employees and therefore, does not have any direct obligations for a defined benefit plan, deferred compensation arrangements, compensated absences or other post retirement benefit plans. Services for the operation of the Company are provided under provisions of the Management Services Agreement as described in Note 10 F.

NOTES TO FINANCIAL STATEMENTS

Note 13- Capital and Surplus, Shareholders' Dividend Restrictions and Quasi-Reorganizations

1. Common Stock

The Company has 18,000 shares authorized, issued and outstanding; \$100 par value.

2. Preferred Stock

Not applicable

3. Dividend Restrictions

There are no dividend restrictions.

4. The maximum amount of dividends that can be paid by Florida domiciled insurance companies to shareholders without prior approval of the Insurance Commissioner is subject to restrictions relating to statutory surplus. The maximum dividend payout that may be made without prior approval during 2008 is \$799,517.

5. The Company does not have restricted unassigned surplus.

6. The Company had no advances to surplus.

7. The Company does not hold stock for special purposes.

8. The Company does not hold special surplus funds.

9. The portion of unassigned funds (surplus) represented by cumulative unrealized gains and (losses) is \$0.

10. Surplus Notes

Not applicable

11. Quasi re-organization (dollar impact)

Not applicable

12. Quasi re-organization (effective date)

Not applicable

13. The Company did not pay a dividend to its parent during 2007.

Note 14- Contingencies

A. Contingent Commitments

The Company has no commitments or contingent commitments to affiliates or other entities as indicated in Note 10 E. The Company has made no guarantees on behalf of affiliates.

B. Assessments

The Company is subject to guaranty fund and other assessments by the states in which it writes business. Guaranty fund assessments are accrued at the time of insolvencies. Other assessments are accrued either at the time of assessments or in the case of premium based assessments, at the time the premiums are written, or, in the case of loss based assessments, at the time the losses are incurred.

The Company has accrued a liability for guaranty funds and other assessments of \$15,685,907 and related premium tax benefit asset of \$0. This represent management's best estimates based on information received from the states in which the company writes business and may change due to factors including the Company's share of the ultimate cost of current insolvencies.

C. Gain Contingencies

Not applicable

D. Claims related extra contractual obligations and bad faith losses stemming from lawsuits

The company did not have claims related extra contractual obligation losses and bad faith losses stemming from lawsuits in the current period.

E. All other Contingencies

Lawsuits arise against the Company in the normal course of business. Contingent liabilities arising from litigation, income taxes, and other matters are not considered material in relation to the financial position of the Company.

NOTES TO FINANCIAL STATEMENTS

As disclosed in Note 9 F, the Company is a member of a controlled group for federal income tax purposes, and that group includes Liberty Mutual Group Inc. ("LMGI"). LMGI is the plan sponsor of the Liberty Mutual Retirement Benefit Plan, a qualified plan under federal law. Pursuant to federal law, if LMGI has not made the minimum required contributions with respect to the Liberty Mutual Retirement Benefit Plan, the Company, jointly and severally with all other members of the controlled group, would be contingently liable to make such contributions.

Note 15- Leases

- A. The Company is not involved in material lease obligations.
- B. Leasing as a significant part of lessor's business activities
Not applicable

Note 16- Information About Financial Instruments with Off-Balance Sheet Risk and Financial Instruments with Concentrations of Credit Risk

The Company is not exposed to financial instruments with off-balance sheet risk or with concentrations of credit risk.

Note 17- Sale, Transfer and Servicing of Financial Assets and Extinguishments of Liabilities

- A. Transfers of Receivables reported as sales:
The Company did not have any transfer of receivables reported as sales during the year.
- B. Transfers and servicing of financial assets:
The Company did not have transfers and servicing of financial assets during the year.
- C. Wash Sales
The Company did not have any wash sale transactions during the year.

Note 18-Gain or Loss from Uninsured Accident and Health Plans and the Uninsured Portion of Partially Insured Plans

- A. Administrative Services Only (ASO) Plans
Not applicable
- B. Administrative Services Contract (ASC) Plans
Not applicable
- C. Medicare or Other Similarly Structured Cost Based Reimbursement Contracts
Not applicable

Note 19- Direct Premium Written/Produced by Managing General Agents/ Third Party Administrators

All of the Company's premiums were written through an affiliated managing general agent.

- A. Name and Address of managing general agent:

Summit Consulting, Inc.
2310 Commerce Point Drive
Lakeland, Florida 33801
- B. FEI Number 59-1683711
- C. Exclusive Contract: Yes
- D. Types of business written: Workers Compensation
- E. Types of Authority Granted:
Underwriting, claims payments, claims adjustments, reinsurance ceding, binding authority, premium collections.
- F. Total Direct Premiums Written in 2007 were \$290,315,538.

Note 20- Other Items

- A. The Company has no extraordinary items to report.
- B. Troubled Debt Restructuring for Debtors
Not applicable
- C. Other Disclosures

NOTES TO FINANCIAL STATEMENTS

1. Pursuant to Florida Statutes 624.424 the following pertains to the Special Disability Trust Fund
 - a. The amount taken by the Company in determination of its loss reserves was \$0 for the prior calendar year and \$0 in the current reporting period.
 - b. The company received payments from the SDTF of \$26,000 in the prior calendar year and \$0 in the current reporting period.
 - c. The Company was assessed by the SDTF for \$2,037,006 in the prior calendar year and \$2,156,323 in the current reporting period.

2. Pursuant to Florida Statutes 625.012 the following pertains to the Agents Balances at December 31, 2007.

a. Agents' balances or Uncollected Premiums per Statement	\$1,592,984 (1)
b. Premiums collected by "Controlled or Controlling" Persons	\$ 0 (2)
c. Premiums collected by "Controlled or Controlling" Persons w/I 15 days	\$ 0 (3)
d. Amount of applicable trust fund	\$ 0 (4)
e. Amount of applicable letter of credit	\$ 0 (5)
f. Amount of applicable Financial Guaranty bond	<u>\$ 0 (6)</u>
g. Totals of (4), (5), & (6)	\$ 0 (7)
h. (2) minus (3) minus (7)	\$ 0 (8)

Assets in the amount of \$2,191,550 and \$2,197,818 as of December 31, 2007 and 2006, respectively, were on deposit with government authorities or trustees as required by law.

- D. The Company routinely assesses the collectibility of its premium receivable based upon Company experience. Amounts in excess of non-admitted amounts are not believed to be material.

- E. **Business Interruption Insurance Recoveries**
The Company does not purchase Business Interruption coverage.

- F. **State Transferable Tax Credits**
The Company does not hold state transferable tax credits.

- G. The Company does not have deposits admitted under section 6603 of the Internal Revenue Services Code.

- H. **Hybrid Securities**
The Company does not hold hybrid securities.

- I. **Sub-Prime Lending**

- J. The Company does not have exposure to sub-prime mortgage related risk.

Note 21- Events Subsequent

There were no events subsequent to December 31, 2007 that would require disclosure.

Note 22- Reinsurance

A. Unsecured Reinsurance Recoverables

The Company has the following unsecured reinsurance recoverable for losses and loss adjustment expense, paid and unpaid, including IBNR which exceed 3% of the policyholders' surplus (\$000 omitted):

FEIN	NAIC #		AMOUNT
36-2114545	20443	Continental Casualty Co.	\$5,646

B. Reinsurance Recoverable in Dispute

There are no reinsurance recoverables in dispute from an individual reinsurer which exceed 5% of the Company's surplus. In addition, the aggregate reinsurance recoverables in dispute do not exceed 10% of the Company's surplus.

NOTES TO FINANCIAL STATEMENTS

C. Reinsurance Assumed and Ceded

- a. The following table sets forth the maximum return premium and commission due the reinsurer or the Company if all of the Company's assumed and ceded reinsurance were canceled as of December 31, 2007.

	Assumed Reinsurance		Ceded Reinsurance		Net Reinsurance	
	UEP	Commission Equity	UEP	Commission Equity	UEP	Commission Equity
Affiliates	\$ 0	\$ 0	\$(4,985,500)	\$(1,196,520)	\$(4,985,500)	\$(1,196,520)
All Others		1,196,520	0	0	4,985,500	1,196,520
	4,985,500					
Total	<u>\$4,985,500</u>	<u>\$1,196,520</u>	<u>\$(4,985,500)</u>	<u>\$(1,196,520)</u>	<u>\$ 0</u>	<u>\$ 0</u>

Direct Unearned Premium Reserve \$0

- b. No sliding scale commission adjustment was due on reinsurance ceded.
- c. There are no reinsurance contracts covering losses that have occurred prior to the inception of the contract that have not been accounted for in conformity with NAIC instructions.
- D. Uncollectible Reinsurance
The Company has not written off any balances in the current year.
- E. Commutation of Ceded Reinsurance
The Company did not commute any ceded reinsurance contract in 2007.
- F. Retroactive Reinsurance
The Company did not have any retroactive reinsurance contracts that transferred liabilities for losses that had already occurred and that would have generated special surplus transactions.
- G. The Company has no reinsurance contracts accounted for as a deposit

Note 23 - Retrospectively Rated Contracts and Contracts Subject to Redetermination

Accrued retrospective premiums reported in Line 12.3 of the assets have been determined based upon loss experience on business subject to such experience rating adjustment. Accrued retrospectively rated premiums, including all of those related to bulk IBNR, have been determined by or allocated to individual policyholder accounts. Ten percent of the amount not offset by retrospective return premiums or collateral has been designated non-admitted and charged to surplus.

Total accrued retro premium	\$5,581,133
Unsecured amount	687,761
Less: Non-admitted amount	<u>68,776</u>
Admitted amount	<u>\$5,512,357</u>

Note 24 - Changes in Incurred Losses and Loss Adjustment Expenses

As a result of the Inter-Company 100% Quota Share Reinsurance Agreement with LMIC (see Note 25), the Company has no net exposure to changes in incurred losses and loss adjustment expenses.

Note 25- Inter-Company Pooling Arrangements

The Company participates in an Inter-Company 100% Quota Share Reinsurance Agreement with an affiliate, LMIC Pursuant to the Agreement, after external reinsurance, the Company cedes its net underwriting activity to LMIC.

Pursuant to the approval of the appropriate state insurance departments, effective January 1, 2008 the Company and its parent, Bridgefield Employers Insurance Company, novated their 100% Quota Share agreements with LMIC to substitute Peerless Insurance Company as the reinsurer.

Note 26- Structured Settlements

- A. As a result of the Inter-Company 100% Quota Share Reinsurance Agreement with LMIC (see Note 25), the Company has no net exposure to contingent liabilities from the purchase of annuities.
- B. Not applicable

Note 27 - Health Care Receivables

Not applicable

Note 28 - Participating Policies

Not applicable

NOTES TO FINANCIAL STATEMENTS

Note 29 – Premium Deficiency Reserves

As of December 31, 2007, the Company had no liabilities related to premium deficiency reserves. The Company considers anticipated investment income when calculating its premium deficiency reserves.

Note 30- High Dollar Deductible Policies

As a result of the Inter-Company 100% Quota Share Reinsurance Agreement with LMIC (see Note 25), the Company does not have any net high dollar deductible policy liabilities.

Note 31- Discounting of Liabilities for Unpaid Losses and Unpaid Loss Adjustment Expenses

Not applicable

Note 32 - Asbestos/Environmental Reserves

As a result of the Inter-Company 100% Quota Share Reinsurance Agreement with LMIC (see Note 25), the Company has no net exposure to asbestos and environmental claims.

Note 33- Subscriber Savings Accounts

The Company is not a reciprocal insurance company.

Note 34 - Multiple Peril Crop Insurance

Not applicable

SUMMARY INVESTMENT SCHEDULE

Investment Categories	Gross Investment Holdings		Admitted Assets as Reported in the Annual Statement	
	1 Amount	2 Percentage	3 Amount	4 Percentage
1. Bonds:				
1.1 U.S. treasury securities	17,940,620	25.110	17,940,620	25.110
1.2 U.S. government agency obligations (excluding mortgage-backed securities):				
1.21 Issued by U.S. government agencies	14,595,152	20.427	14,595,152	20.427
1.22 Issued by U.S. government sponsored agencies	1,994,927	2.792	1,994,927	2.792
1.3 Foreign government (including Canada, excluding mortgage-backed securities)				
1.4 Securities issued by states, territories, and possessions and political subdivisions in the U.S.:				
1.41 States, territories and possessions general obligations	1,973,452	2.762	1,973,452	2.762
1.42 Political subdivisions of states, territories and possessions and political subdivisions general obligations				
1.43 Revenue and assessment obligations				
1.44 Industrial development and similar obligations				
1.5 Mortgage-backed securities (includes residential and commercial MBS):				
1.51 Pass-through securities:				
1.511 Issued or guaranteed by GNMA				
1.512 Issued or guaranteed by FNMA and FHLMC				
1.513 All other				
1.52 CMOs and REMICs:				
1.521 Issued or guaranteed by GNMA, FNMA, FHLMC or VA				
1.522 Issued by non-U.S. Government issuers and collateralized by mortgage-backed securities issued or guaranteed by agencies shown in Line 1.521				
1.523 All other				
2. Other debt and other fixed income securities (excluding short term):				
2.1 Unaffiliated domestic securities (includes credit tenant loans rated by the SVO)	8,463,476	11.845	8,463,476	11.845
2.2 Unaffiliated foreign securities				
2.3 Affiliated securities				
3. Equity interests:				
3.1 Investments in mutual funds	5,192,177	7.267	5,192,177	7.267
3.2 Preferred stocks:				
3.21 Affiliated				
3.22 Unaffiliated				
3.3 Publicly traded equity securities (excluding preferred stocks):				
3.31 Affiliated				
3.32 Unaffiliated				
3.4 Other equity securities:				
3.41 Affiliated				
3.42 Unaffiliated				
3.5 Other equity interests including tangible personal property under lease:				
3.51 Affiliated				
3.52 Unaffiliated				
4. Mortgage loans:				
4.1 Construction and land development				
4.2 Agricultural				
4.3 Single family residential properties				
4.4 Multifamily residential properties				
4.5 Commercial loans				
4.6 Mezzanine real estate loans				
5. Real estate investments:				
5.1 Property occupied by company				
5.2 Property held for production of income (including \$ 0 of property acquired in satisfaction of debt)				
5.3 Property held for sale (including \$ 0 property acquired in satisfaction of debt)				
6. Contract loans				
7. Receivables for securities	15,467	0.022	15,467	0.022
8. Cash, cash equivalents and short-term investments	21,273,617	29.775	21,273,617	29.775
9. Other invested assets				
10. Total invested assets	71,448,888	100.000	71,448,888	100.000

GENERAL INTERROGATORIES

PART 1 - COMMON INTERROGATORIES

GENERAL

- 1.1 Is the reporting entity a member of an Insurance Holding Company System consisting of two or more affiliated persons, one or more of which is an insurer? Yes [X] No []
- 1.2 If yes, did the reporting entity register and file with its domiciliary State Insurance Commissioner, Director or Superintendent or with such regulatory official of the state of domicile of the principal insurer in the Holding Company System, a registration statement providing disclosure substantially similar to the standards adopted by the National Association of Insurance Commissioners (NAIC) in its Model Insurance Holding Company System Regulatory Act and model regulations pertaining thereto, or is the reporting entity subject to standards and disclosure requirements substantially similar to those required by such Act and regulations? Yes [X] No [] N/A []
- 1.3 State Regulating? Florida
- 2.1 Has any change been made during the year of this statement in the charter, by-laws, articles of incorporation, or deed of settlement of the reporting entity? Yes [] No [X]
- 2.2 If yes, date of change: 12/31/2006
- 3.1 State as of what date the latest financial examination of the reporting entity was made or is being made. 12/31/2006
- 3.2 State the as of date that the latest financial examination report became available from either the state of domicile or the reporting entity. This date should be the date of the examined balance sheet and not the date the report was completed or released. 12/31/2006
- 3.3 State as of what date the latest financial examination report became available to other states or the public from either the state of domicile or the reporting entity. This is the release date or completion date of the examination report and not the date of the examination (balance sheet date). 01/24/2008
- 3.4 By what department or departments? Florida Office of Insurance Regulation

- 4.1 During the period covered by this statement, did any agent, broker, sales representative, non-affiliated sales/service organization or any combination thereof under common control (other than salaried employees of the reporting entity) receive credit or commissions for or control a substantial part (more than 20 percent of any major line of business measured on direct premiums) of:
- 4.11 sales of new business? Yes [] No [X]
- 4.12 renewals? Yes [] No [X]
- 4.2 During the period covered by this statement, did any sales/service organization owned in whole or in part by the reporting entity or an affiliate, receive credit or commissions for or control a substantial part (more than 20 percent of any major line of business measured on direct premiums) of:
- 4.21 sales of new business? Yes [X] No []
- 4.22 renewals? Yes [] No [X]
- 5.1 Has the reporting entity been a party to a merger or consolidation during the period covered by this statement? Yes [] No [X]
- 5.2 If yes, provide the name of the entity, NAIC company code, and state of domicile (use two letter state abbreviation) for any entity that has ceased to exist as a result of the merger or consolidation.

1 Name of Entity	2 NAIC Company Code	3 State of Domicile

- 6.1 Has the reporting entity had any Certificates of Authority, licenses or registrations (including corporate registration, if applicable) suspended or revoked by any governmental entity during the reporting period? Yes [] No [X]
- 6.2 If yes, give full information
- 7.1 Does any foreign (non-United States) person or entity directly or indirectly control 10% or more of the reporting entity? Yes [] No [X]
- 7.2 If yes,
- 7.21 State the percentage of foreign control 0 %
- 7.22 State the nationality(s) of the foreign person(s) or entity(s); or if the entity is a mutual or reciprocal, the nationality of its manager or attorney-in-fact and identify the type of entity(s) (e.g., individual, corporation, government, manager or attorney-in-fact).

1 Nationality	2 Type of Entity

- 8.1 Is the company a subsidiary of a bank holding company regulated by the Federal Reserve Board? Yes [] No [X]
- 8.2 If response to 8.1 is yes, please identify the name of the bank holding company.

GENERAL INTERROGATORIES

PART 1 - COMMON INTERROGATORIES

- 8.3 Is the company affiliated with one or more banks, thrifts or securities firms? Yes [] No [X]
 8.4 If response to 8.3 is yes, please provide the names and locations (city and state of the main office) of any affiliates regulated by a federal financial regulatory services agency [i.e. the Federal Reserve Board (FRB), the Office of the Comptroller of the Currency (OCC), the Office of Thrift Supervision (OTS), the Federal Deposit Insurance Corporation (FDIC) and the Securities Exchange Commission (SEC)] and identify the affiliate's primary federal regulator.

1 Affiliate Name	2 Location (City, State)	3 FRB	4 OCC	5 OTS	6 FDIC	7 SEC

9. What is the name and address of the independent certified public accountant or accounting firm retained to conduct the annual audit?
 Ernst & Young, LLP
 200 Clarendon Street, Boston, MA 02116

10. What is the name, address and affiliation (officer/employee of the reporting entity or actuary/consultant associated with an actuarial consulting firm) of the individual providing the statement of actuarial opinion/certification? Roy K. Morell
 175 Berkeley Street, Boston, MA 02117
 Officer of Liberty Mutual Insurance Company

- 11.1 Does the reporting entity own any securities of a real estate holding company or otherwise hold real estate indirectly? Yes [] No [X]
- | | | | |
|---|---|--|---|
| 11.11 Name of real estate holding company | 0 | | 0 |
| 11.12 Number of parcels involved | | | 0 |
| 11.13 Total book/adjusted carrying value | | | 0 |

11.2 If yes, provide explanation

12. FOR UNITED STATES BRANCHES OF ALIEN REPORTING ENTITIES ONLY:

12.1 What changes have been made during the year in the United States manager or the United States trustees of the reporting entity?

12.2 Does this statement contain all business transacted for the reporting entity through its United States Branch on risks wherever located? Yes [] No [X]

12.3 Have there been any changes made to any of the trust indentures during the year? Yes [] No [X]

12.4 If answer to (12.3) is yes, has the domiciliary or entry state approved the changes? Yes [] No [] N/A [X]

13.1 Are the senior officers (principal executive officer, principal financial officer, principal accounting officer or controller, or persons performing similar functions) of the reporting entity subject to a code of ethics, which includes the following standards? Yes [X] No []

- a. Honest and ethical conduct, including the ethical handling of actual or apparent conflicts of interest between personal and professional relationships;
- b. Full, fair, accurate, timely and understandable disclosure in the periodic reports required to be filed by the reporting entity;
- c. Compliance with applicable governmental laws, rules and regulations;
- d. The prompt internal reporting of violations to an appropriate person or persons identified in the code; and
- e. Accountability for adherence to the code.

13.11 If the response to 13.1 is No, please explain:

13.2 Has the code of ethics for senior managers been amended? Yes [] No [X]

13.21 If the response to 13.2 is Yes, provide information related to amendment(s).

13.3 Have any provisions of the code of ethics been waived for any of the specified officers? Yes [] No [X]

13.31 If the response to 13.3 is Yes, provide the nature of any waiver(s).

BOARD OF DIRECTORS

14. Is the purchase or sale of all investments of the reporting entity passed upon either by the board of directors or a subordinate committee thereof? Yes [X] No []

15. Does the reporting entity keep a complete permanent record of the proceedings of its board of directors and all subordinate committees thereof? Yes [X] No []

16. Has the reporting entity an established procedure for disclosure to its board of directors or trustees of any material interest or affiliation on the part of any of its officers, directors, trustees or responsible employees that is in conflict or is likely to conflict with the official duties of such person? Yes [X] No []

FINANCIAL

17. Has this statement been prepared using a basis of accounting other than Statutory Accounting Principles (e.g., Generally Accepted Accounting Principles)? Yes [] No [X]

18.1 Total amount loaned during the year (inclusive of Separate Accounts, exclusive of policy loans):

18.11 To directors or other officers	\$		0
18.12 To stockholders not officers	\$		0
18.13 Trustees, supreme or grand (Fraternal only)	\$		0

18.2 Total amount of loans outstanding at the end of year (inclusive of Separate Accounts, exclusive of policy loans):

18.21 To directors or other officers	\$		0
18.22 To stockholders not officers	\$		0
18.23 Trustees, supreme or grand (Fraternal only)	\$		0

GENERAL INTERROGATORIES

PART 1 - COMMON INTERROGATORIES

- 19.1 Were any assets reported in this statement subject to a contractual obligation to transfer to another party without the liability for such obligation being reported in the statement? Yes [] No [X]
- 19.2 If yes, state the amount thereof at December 31 of the current year:
- | | | | |
|-------|----------------------|----|---|
| 19.21 | Rented from others | \$ | 0 |
| 19.22 | Borrowed from others | \$ | 0 |
| 19.23 | Leased from others | \$ | 0 |
| 19.24 | Other | \$ | 0 |
- 20.1 Does this statement include payments for assessments as described in the Annual Statement Instructions other than guaranty fund or guaranty association assessments? Yes [] No [X]
- 20.2 If answer is yes:
- | | | | |
|-------|--|----|---|
| 20.21 | Amount paid as losses or risk adjustment | \$ | 0 |
| 20.22 | Amount paid as expenses | \$ | 0 |
| 20.23 | Other amounts paid | \$ | 0 |
- 21.1 Does the reporting entity report any amounts due from parent, subsidiaries or affiliates on Page 2 of this statement? Yes [X] No []
- 21.2 If yes, indicate any amounts receivable from parent included in the Page 2 amount: \$ 0

INVESTMENT

- 22.1 Were all the stocks, bonds and other securities owned December 31 of current year, over which the reporting entity has exclusive control, in the actual possession of the reporting entity on said date, except as shown by Schedule E - Part 3 - Special Deposits? Yes [X] No []
- 22.2 If no, give full and complete information, relating thereto
- 23.1 Were any of the stocks, bonds or other assets of the reporting entity owned at December 31 of the current year not exclusively under the control of the reporting entity, or has the reporting entity sold or transferred any assets subject to a put option contract that is currently in force? (Exclude securities subject to Interrogatory 19.1). Yes [] No [X]
- 23.2 If yes, state the amount thereof at December 31 of the current year:
- | | | | |
|--------|--|----|-----------|
| 23.21 | Loaned to others | \$ | 0 |
| 23.22 | Subject to repurchase agreements | \$ | 0 |
| 23.23 | Subject to reverse repurchase agreements | \$ | 0 |
| 23.24 | Subject to dollar repurchase agreements | \$ | 0 |
| 23.25 | Subject to reverse dollar repurchase agreements | \$ | 0 |
| 23.26 | Pledged as collateral | \$ | 0 |
| 23.27 | Placed under option agreements | \$ | 0 |
| 23.28 | Letter stock or securities restricted as to sale | \$ | 0 |
| 23.29 | On deposit with state or other regulatory body | \$ | 2,191,550 |
| 23.291 | Other | \$ | 0 |

23.3 For category (23.28) provide the following:

1 Nature of Restriction	2 Description	3 Amount
		0
		0
		0

- 24.1 Does the reporting entity have any hedging transactions reported on Schedule DB? Yes [] No [X]
- 24.2 If yes, has a comprehensive description of the hedging program been made available to the domiciliary state? Yes [] No [] N/A [X]
If no, attach a description with this statement.
- 25.1 Were any preferred stocks or bonds owned as of December 31 of the current year mandatorily convertible into equity, or, at the option of the issuer, convertible into equity? Yes [] No [X]
- 25.2 If yes, state the amount thereof at December 31 of the current year. \$ 0

26. Excluding items in Schedule E, real estate, mortgage loans and investments held physically in the reporting entity's offices, vaults or safety deposit boxes, were all stocks, bonds and other securities owned throughout the current year held pursuant to a custodial agreement with a qualified bank or trust company in accordance with Section 3, III Conducting Examinations, G - Custodial or Safekeeping agreements of the NAIC Financial Condition Examiners Handbook? Yes [X] No []

26.01 For agreements that comply with the requirements of the NAIC Financial Condition Examiners Handbook, complete the following:

1 Name of Custodian(s)	2 Custodian's Address
JP Morgan Chase Bank	3 Chase Metro Tech Center, 6th Floor, Brooklyn, NY 11245

26.02 For all agreements that do not comply with the requirements of the NAIC Financial Condition Examiners Handbook, provide the name, location and a complete explanation:

1 Name(s)	2 Location(s)	3 Complete Explanation(s)

- 26.03 Have there been any changes, including name changes, in the custodian(s) identified in 26.01 during the current year? Yes [] No [X]

GENERAL INTERROGATORIES

PART 1 - COMMON INTERROGATORIES

26.04 If yes, give full and complete information relating thereto:

1 Old Custodian	2 New Custodian	3 Date of Change	4 Reason

26.05 Identify all investment advisors, brokers/dealers or individuals acting on behalf of brokers/dealers that have access to the investment accounts, handle securities and have authority to make investments on behalf of the reporting entity:

1 Central Registration Depository Number(s)	2 Name	3 Address

27.1 Does the reporting entity have any diversified mutual funds reported in Schedule D, Part 2 (diversified according to the Securities and Exchange Commission (SEC) in the Investment Company Act of 1940 [Section 5 (b) (1)])? Yes [] No []

27.2 If yes, complete the following schedule:

1 CUSIP#	2 Name of Mutual Fund	3 Book/Adjusted Carrying Value
		0
		0
		0
		0
		0
27.2999	Total	0

27.3 For each mutual fund listed in the table above, complete the following schedule:

1 Name of Mutual Fund (from above table)	2 Name of Significant Holding of the Mutual Fund	3 Amount of Mutual Fund's Book/Adjusted Carrying Value Attributable to the Holding	4 Date of Valuation
		0	
		0	
		0	
		0	

28. Provide the following information for all short-term and long-term bonds and all preferred stocks. Do not substitute amortized value or statement value for fair value.

	1 Statement (Admitted) Value	2 Fair Value	3 Excess of Statement over Fair Value (-), or Fair Value over Statement (+)
28.1 Bonds	70,132,285	70,335,981	203,696
28.2 Preferred stocks	0	0	0
28.3 Totals	70,132,285	70,335,981	203,696

28.4 Describe the sources or methods utilized in determining the fair values: IDC, Bloomberg, NAIC-SVO, Broker Quotes, Analytically Determined

29.1 Have all the filing requirements of the Purposes and Procedures manual of the NAIC Securities Valuation Office been followed? Yes [] No []

29.2 If no, list exceptions: _____

OTHER

30.1 Amount of payments to trade associations, service organizations and statistical or rating bureaus, if any? \$ 789,697

30.2 List the name of the organization and the amount paid if any such payment represented 25% or more of the total payments to trade associations, service organizations and statistical or rating bureaus during the period covered by this statement.

1 Name	2 Amount Paid
NCCI	\$ 760,881
	\$ 0
	\$ 0

31.1 Amount of payments for legal expenses, if any? \$ 39,690

GENERAL INTERROGATORIES

PART 1 - COMMON INTERROGATORIES

31.2 List the name of the firm and the amount paid if any such payment represented 25% or more of the total payments for legal expenses during the period covered by this statement.

1 Name	2 Amount Paid
Dale Gardner Jacobs	\$ 12,558
Mans & Alley Stemman	\$ 11,566
	\$ 0

32.1 Amount of payments for expenditures in connection with matters before legislative bodies, officers or departments of government, if any? \$ 3,600

32.2 List the name of the firm and the amount paid if any such payment represented 25% or more of the total payment expenditures in connection with matters before legislative bodies, officers or departments of government during the period covered by this statement.

1 Name	2 Amount Paid
Advocacy Associates, Inc.	\$ 3,600
	\$ 0
	\$ 0
	\$ 0

GENERAL INTERROGATORIES

PART 2 - PROPERTY & CASUALTY INTERROGATORIES

1.1 Does the reporting entity have any direct Medicare Supplement Insurance in force? YES [] NO [X]
 1.2 If yes, indicate premium earned on U. S. business only. \$ 0
 1.3 What portion of Item (1.2) is not reported on the Medicare Supplement Insurance Experience Exhibit? \$ 0
 1.31 Reason for excluding

1.4 Indicate amount of earned premium attributable to Canadian and/or Other Alien not included in Item (1.2) above. \$ 0
 1.5 Indicate total incurred claims on all Medicare Supplement insurance. \$ 0

1.6 Individual policies:
 Most current three years:
 1.61 Total premium earned \$ 0
 1.62 Total incurred claims \$ 0
 1.63 Number of covered lives \$ 0
 All years prior to most current three years:
 1.64 Total premium earned \$ 0
 1.65 Total incurred claims \$ 0
 1.66 Number of covered lives \$ 0

1.7 Group policies:
 Most current three years:
 1.71 Total premium earned \$ 0
 1.72 Total incurred claims \$ 0
 1.73 Number of covered lives \$ 0
 All years prior to most current three years:
 1.74 Total premium earned \$ 0
 1.75 Total incurred claims \$ 0
 1.76 Number of covered lives \$ 0

2. Health Test:

	1	2
	Current Year	Prior Year
2.1 Premium Numerator	\$ 0	\$ 0
2.2 Premium Denominator	\$ 0	\$ 0
2.3 Premium Ratio (2.1/2.2)	0.00	0.00
2.4 Reserve Numerator	\$ 0	\$ 0
2.5 Reserve Denominator	\$ 0	\$ 0
2.6 Reserve Ratio (2.4/2.5)	0.00	0.00

3.1 Does the reporting entity issue both participating and non-participating policies? YES [] NO [X]
 3.2 If yes, state the amount of calendar year premiums written on:
 3.21 Participating policies \$ 0
 3.22 Non-participating policies \$ 0

4. For Mutual Reporting Entities and Reciprocal Exchange only:
 4.1 Does the reporting entity issue assessable policies? YES [] NO [X]
 4.2 Does the reporting entity issue non-assessable policies? YES [] NO [X]
 4.3 If assessable policies are issued, what is the extent of the contingent liability of the policyholders? 0 %
 4.4 Total amount of assessments paid or ordered to be paid during the year on deposit notes or contingent premiums. \$ 0

5. For Reciprocal Exchanges Only:
 5.1 Does the exchange appoint local agents? YES [] NO [X]
 5.2 If yes, is the commission paid:
 5.21 Out of Attorney's-in-fact compensation YES [] NO [] N/A [X]
 5.22 As a direct expense of the exchange YES [] NO [] N/A [X]

5.3 What expenses of the Exchange are not paid out of the compensation of the Attorney-in-fact?
 5.4 Has any Attorney-in-fact compensation, contingent on fulfillment of certain conditions, been deferred? YES [] NO [X]
 5.5 If yes, give full information

GENERAL INTERROGATORIES
(Continued)

PART 2 - PROPERTY & CASUALTY INTERROGATORIES

- 6.1 What provision has this reporting entity made to protect itself from an excessive loss in the event of a catastrophe under a workers' compensation contract issued without limit of loss: Quota Share, Excess of Loss Reins and Catastrophe Reinsurance
- 6.2 Describe the method used to estimate this reporting entity's probable maximum insurance loss, and identify the type of insured exposures comprising that probable maximum loss, the locations of concentrations of those exposures and the external resources (such as consulting firms or computer software models), if any, used in the estimation process: The Company has evaluated its probable maximum loss using a combination of internal and external actuarial loss development techniques and computer modeling.
- 6.3 What provision has this reporting entity made (such as a catastrophic reinsurance program) to protect itself from an excessive loss arising from the types and concentrations of insured exposures comprising its probable maximum property insurance loss?
The Company does not write Property insurance. The Company only writes Workers Compensation, for which the Company carries Workers Comp Catastrophe reinsurance
- 6.4 Does the reporting entity carry catastrophe reinsurance protection for at least one reinstatement, in an amount sufficient to cover its estimated probable maximum loss attributable to a single loss event or occurrence? YES NO
- 6.5 If no, describe any arrangements or mechanisms employed by the reporting entity to supplement its catastrophe reinsurance program or to hedge its exposure to uninsured catastrophic loss
- 7.1 Has the reporting entity reinsured any risk with any other entity under a quota share reinsurance contract that includes a provision that would limit the reinsurer's losses below the stated quota share percentage (e.g., a deductible, a loss ratio corridor, a loss cap, an aggregate limit or any similar provisions)? YES NO
- 7.2 If yes, indicate the number of reinsurance contracts containing such provisions. 0
- 7.3 If yes, does the amount of reinsurance credit taken reflect the reduction in quota share coverage caused by any applicable limiting provision(s)? YES NO
- 8.1 Has this reporting entity reinsured any risk with any other entity and agreed to release such entity from liability, in whole or in part, from any loss that may occur on this risk, or portion thereof, reinsured? YES NO
- 8.2 If yes, give full information
- 9.1 Has the reporting entity ceded any risk under any reinsurance contract (or under multiple contracts with the same reinsurer or its affiliates) for which during the period covered by the statement: (i) it recorded a positive or negative underwriting result greater than 5% of prior year-end surplus as regards policyholders or it reported calendar year written premium ceded or year-end loss and loss expense reserves ceded greater than 5% of prior year-end surplus as regards policyholders; (ii) it accounted for that contract as reinsurance and not as a deposit; and (iii) the contract(s) contain one or more of the following features or other features that would have similar results:
(a) A contract term longer than two years and the contract is noncancellable by the reporting entity during the contract term;
(b) A limited or conditional cancellation provision under which cancellation triggers an obligation by the reporting entity, or an affiliate of the reporting entity, to enter into a new reinsurance contract with the reinsurer, or an affiliate of the reinsurer;
(c) Aggregate stop loss reinsurance coverage;
(d) A unilateral right by either party (or both parties) to commute the reinsurance contract, whether conditional or not, except for such provisions which are only triggered by a decline in the credit status of the other party;
(e) A provision permitting reporting of losses, or payment of losses, less frequently than on a quarterly basis (unless there is no activity during the period); or
(f) Payment schedule, accumulating retentions from multiple years or any features inherently designed to delay timing of the reimbursement to the ceding entity. YES NO
- 9.2 Has the reporting entity during the period covered by the statement ceded any risk under any reinsurance contract (or under multiple contracts with the same reinsurer or its affiliates), for which, during the period covered by the statement, it recorded a positive or negative underwriting result greater than 5% of prior year-end surplus as regards policyholders or it reported calendar year written premium ceded or year-end loss and loss expense reserves ceded greater than 5% of prior year-end surplus as regards policyholders; excluding cessions to approved pooling arrangements or to captive insurance companies that are directly or indirectly controlling, controlled by, or under common control with (i) one or more unaffiliated policyholders of the reporting entity, or (ii) an association of which one or more unaffiliated policyholders of the reporting entity is a member where:
(a) The written premium ceded to the reinsurer by the reporting entity or its affiliates represents fifty percent (50%) or more of the entire direct and assumed premium written by the reinsurer based on its most recently available financial statement; or
(b) Twenty-five percent (25%) or more of the written premium ceded to the reinsurer has been retroceded back to the reporting entity or its affiliates in a separate reinsurance contract. YES NO
- 9.3 If yes to 9.1 or 9.2, please provide the following information in the Reinsurance Summary Supplemental Filing for General Interrogatory 9:
(a) The aggregate financial statement impact gross of all such ceded reinsurance contracts on the balance sheet and statement of income;
(b) A summary of the reinsurance contract terms and indicate whether it applies to the contracts meeting the criteria in 9.1 or 9.2; and
(c) A brief discussion of management's principle objectives in entering into the reinsurance contract including the economic purpose to be achieved.
- 9.4 Except for transactions meeting the requirements of paragraph 30 of SSAP No. 62, Property and Casualty Reinsurance, has the reporting entity ceded any risk under any reinsurance contract (or multiple contracts with the same reinsurer or its affiliates) during the period covered by the financial statement, and either:
(a) Accounted for that contract as reinsurance (either prospective or retroactive) under statutory accounting principles ("SAP") and as a deposit under generally accepted accounting principles ("GAAP"); or
(b) Accounted for that contract as reinsurance under GAAP and as a deposit under SAP? YES NO

GENERAL INTERROGATORIES
(Continued)

PART 2 - PROPERTY & CASUALTY INTERROGATORIES

- 9.5 If yes to 9.4, explain in the Reinsurance Summary Supplemental Filing for General Interrogatory 9 (Section D) why the contract(s) is treated differently for GAAP and SAP.
- 9.6 The reporting entity is exempt from the Reinsurance Attestation Supplement under one or more of the following criteria:
- (a) The entity does not utilize reinsurance; or, YES [] NO [X]
- (b) The entity only engages in a 100% quota share contract with an affiliate and the affiliated or lead company has filed an attestation supplement; or, YES [] NO [X]
- (c) The entity has no external cessions and only participates in an intercompany pool and the affiliated or lead company has filed an attestation supplement. YES [] NO [X]
10. If the reporting entity has assumed risks from another entity, there should be charged on account of such reinsurances a reserve equal to that which the original entity would have been required to charge had it retained the risks. Has this been done? YES [X] NO [] N/A []
- 11.1 Has the reporting entity guaranteed policies issued by any other entity and now in force: YES [] NO [X]
- 11.2 If yes, give full information
- 12.1 If the reporting entity recorded accrued retrospective premiums on insurance contracts on Line 13.3 of the asset schedule, Page 2, state the amount of corresponding liabilities recorded for:
- | | | |
|---|----|---|
| 12.11 Unpaid losses | \$ | 0 |
| 12.12 Unpaid underwriting expenses (including loss adjustment expenses) | \$ | 0 |
- 12.2 Of the amount on Line 13.3, Page 2, state the amount that is secured by letters of credit, collateral and other funds? \$ 5,505,479
- 12.3 If the reporting entity underwrites commercial insurance risks, such as workers' compensation, are premium notes or promissory notes accepted from its insureds covering unpaid premiums and/or unpaid losses? YES [X] NO [] N/A []
- 12.4 If yes, provide the range of interest rates charged under such notes during the period covered by this statement:
- | | |
|------------|---------|
| 12.41 From | 5.000 % |
| 12.42 To | 5.000 % |
- 12.5 Are letters of credit or collateral and other funds received from insureds being utilized by the reporting entity to secure premium notes or promissory notes taken by a reporting entity, or to secure any of the reporting entity's reported direct unpaid loss reserves, including unpaid losses under loss deductible features of commercial policies? YES [X] NO []
- 12.6 If yes, state the amount thereof at December 31 of current year:
- | | | |
|----------------------------------|----|-----------|
| 12.61 Letters of Credit | \$ | 9,865,000 |
| 12.62 Collateral and other funds | \$ | 3,590,000 |
- 13.1 Largest net aggregate amount insured in any one risk (excluding workers' compensation): \$ 0
- 13.2 Does any reinsurance contract considered in the calculation of this amount include an aggregate limit of recovery without also including a reinstatement provision? YES [] NO [X]
- 13.3 State the number of reinsurance contracts (excluding individual facultative risk certificates, but including facultative programs, automatic facilities or facultative obligatory contracts) considered in the calculation of the amount. 0
- 14.1 Is the company a cedant in a multiple cedant reinsurance contract? YES [X] NO []
- 14.2 If yes, please describe the method of allocating and recording reinsurance among the cedants: Premiums and losses allocated based on the individual company
- 14.3 If the answer to 14.1 is yes, are the methods described in item 14.2 entirely contained in the respective multiple cedant reinsurance contracts? YES [X] NO []
- 14.4 If the answer to 14.3 is no, are all the methods described in 14.2 entirely contained in written agreements? YES [X] NO []
- 14.5 If the answer to 14.4 is no, please explain:
- 15.1 Has the reporting entity guaranteed any financed premium accounts? YES [] NO [X]
- 15.2 If yes, give full information
- 16.1 Does the reporting entity write any warranty business? YES [] NO [X]
- If yes, disclose the following information for each of the following types of warranty coverage:

	1	2	3	4	5
	Direct Losses Incurred	Direct Losses Unpaid	Direct Written Premium	Direct Premium Unearned	Direct Premium Earned
16.11 Home	\$ 0	\$ 0	\$ 0	\$ 0	\$ 0
16.12 Products	\$ 0	\$ 0	\$ 0	\$ 0	\$ 0
16.13 Automobile	\$ 0	\$ 0	\$ 0	\$ 0	\$ 0
16.14 Other*	\$ 0	\$ 0	\$ 0	\$ 0	\$ 0

* Disclose type of coverage: _____

GENERAL INTERROGATORIES
(Continued)

PART 2 - PROPERTY & CASUALTY INTERROGATORIES

17.1 Does the reporting entity include amounts recoverable on unauthorized reinsurance in Schedule F - Part 3 that it excludes from Schedule F - Part 5. YES [] NO [X]
 Incurred but not reported losses on contracts not in force prior to July 1, 1984 and not subsequently renewed are exempt from inclusion in Schedule F - Part 5. Provide the following information for this exemption:

17.11	Gross amount of unauthorized reinsurance in Schedule F - Part 3 excluded from Schedule F - Part 5	\$	<u>0</u>
17.12	Unfunded portion of Interrogatory 17.11	\$	<u>0</u>
17.13	Paid losses and loss adjustment expenses portion of Interrogatory 17.11	\$	<u>0</u>
17.14	Case reserves portion of Interrogatory 17.11	\$	<u>0</u>
17.15	Incurred but not reported portion of Interrogatory 17.11	\$	<u>0</u>
17.16	Unearned premium portion of Interrogatory 17.11	\$	<u>0</u>
17.17	Contingent commission portion of Interrogatory 17.11	\$	<u>0</u>

Provide the following information for all other amounts included in Schedule F - Part 3 and excluded from Schedule F - Part 5, not included above.

17.18	Gross amount of unauthorized reinsurance in Schedule F - Part 3 excluded from Schedule F - Part 5	\$	<u>0</u>
17.19	Unfunded portion of Interrogatory 17.18	\$	<u>0</u>
17.20	Paid losses and loss adjustment expenses portion of Interrogatory 17.18	\$	<u>0</u>
17.21	Case reserves portion of Interrogatory 17.18	\$	<u>0</u>
17.22	Incurred but not reported portion of Interrogatory 17.18	\$	<u>0</u>
17.23	Unearned premium portion of Interrogatory 17.18	\$	<u>0</u>
17.24	Contingent commission portion of Interrogatory 17.18	\$	<u>0</u>

FIVE-YEAR HISTORICAL DATA

Show amounts in whole dollars only, no cents; show percentages to one decimal place, i.e., 17.6.

	1 2007	2 2006	3 2005	4 2004	5 2003
Gross Premiums Written (Page 8, Part 1B, Cols. 1, 2 & 3)					
1. Liability lines (Lines 11.1, 11.2, 16, 17.1, 17.2, 18.1, 18.2, 19.1, 19.2 & 19.3, 19.4)	303,957,779	242,126,437	196,343,890	162,064,831	73,182,617
2. Property lines (Lines 1, 2, 9, 12, 21 & 26)					
3. Property and liability combined lines (Lines 3, 4, 5, 8, 22 & 27)				56	792,512
4. All other lines (Lines 6, 10, 13, 14, 15, 23, 24, 28, 29 & 33)					
5. Nonproportional reinsurance lines (Lines 30, 31 & 32)					
6. Total (Line 34)	303,957,779	242,126,437	196,343,890	162,064,887	73,975,129
Net Premiums Written (Page 8, Part 1B, Col. 6)					
7. Liability lines (Lines 11.1, 11.2, 16, 17.1, 17.2, 18.1, 18.2, 19.1, 19.2 & 19.3, 19.4)					
8. Property lines (Lines 1, 2, 9, 12, 21 & 26)					
9. Property and liability combined lines (Lines 3, 4, 5, 8, 22 & 27)					
10. All other lines (Lines 6, 10, 13, 14, 15, 23, 24, 28, 29 & 33)					
11. Nonproportional reinsurance lines (Lines 30, 31 & 32)					
12. Total (Line 34)					
Statement of Income (Page 4)					
13. Net underwriting gain (loss) (Line 8)					
14. Net investment gain (loss) (Line 11)	3,959,458	3,044,800	2,459,131	2,258,258	2,140,691
15. Total other income (Line 15)					
16. Dividends to policyholders (Line 17)					
17. Federal and foreign income taxes incurred (Line 19)	1,373,831	1,032,635	750,539	727,292	643,973
18. Net income (Line 20)	2,585,627	2,012,165	1,708,592	1,530,966	1,496,718
Balance Sheet Lines (Pages 2 and 3)					
19. Total admitted assets excluding protected cell business (Page 2, Line 24, Col. 3)	122,875,928	94,101,906	70,519,370	48,977,000	38,059,390
20. Premiums and considerations (Page 2, Col. 3)					
20.1 In course of collection (Line 13.1)	1,592,984	1,763,193	2,613,738	1,826,829	1,024,961
20.2 Deferred and not yet due (Line 13.2)	7,088,607	3,847,890	7,580,464	6,100,878	(3,976,244)
20.3 Accrued retrospective premiums (Line 13.3)	5,512,357	127,470	(474,668)	(517,053)	(532,875)
21. Total liabilities excluding protected cell business (Page 3, Line 24)	82,880,755	65,210,193	42,535,395	29,575,768	19,546,827
22. Losses (Page 3, Line 1)			338,808		
23. Loss adjustment expenses (Page 3, Line 3)					
24. Unearned premiums (Page 3, Line 9)					
25. Capital paid up (Page 3, Lines 28 & 29)	1,800,000	1,800,000	1,800,000	1,800,000	1,800,000
26. Surplus as regards policyholders (Page 3, Line 35)	39,995,173	28,891,713	27,983,975	19,401,232	18,512,563
Cash Flow (Page 5)					
27. Net cash from operations (Line 11)	9,731,081	14,908,875	15,879,785	(1,814,631)	34,031,527
Risk-Based Capital Analysis					
28. Total adjusted capital	39,995,173	28,891,713	27,983,975	19,401,232	18,512,563
29. Authorized control level risk-based capital	885,059	642,583	812,056	433,882	535,409
Percentage Distribution of Cash, Cash Equivalents and Invested Assets (Page 2, Col. 3) (Item divided by Page 2, Line 10, Col. 3) x 100.0					
30. Bonds (Line 1)	62.9	78.7	83.5	88.2	96.3
31. Stocks (Lines 2.1 & 2.2)					0.1
32. Mortgage loans on real estate (Lines 3.1 and 3.2)					
33. Real estate (Lines 4.1, 4.2 & 4.3)					
34. Cash, cash equivalents and short-term investments (Line 5)	37.0	21.2	16.5	11.8	3.0
35. Contract loans (Line 6)					
36. Other invested assets (Line 7)					
37. Receivables for securities (Line 8)					0.6
38. Aggregate write-ins for invested assets (Line 9)					
39. Cash, cash equivalents and invested assets (Line 10)	100.0	100.0	100.0	100.0	100.0
Investments in Parent, Subsidiaries and Affiliates					
40. Affiliated bonds, (Sch. D, Summary, Line 25, Col. 1)					
41. Affiliated preferred stocks (Sch. D, Summary, Line 39, Col. 1)					
42. Affiliated common stocks (Sch. D, Summary, Line 53, Col. 1)					
43. Affiliated short-term investments (subtotals included in Schedule DA, Part 2, Col. 5, Line 7)					
44. Affiliated mortgage loans on real estate					
45. All other affiliated					
46. Total of above Lines 40 to 45					
47. Percentage of investments in parent, subsidiaries and affiliates to surplus as regards policyholders (Line 46 above divided by Page 3, Col. 1, Line 35 x 100.0)					

FIVE-YEAR HISTORICAL DATA

(Continued)

	1 2007	2 2006	3 2005	4 2004	5 2003
Capital and Surplus Accounts (Page 4)					
48. Net unrealized capital gains (losses) (Line 24)				(1,650)	10,900
49. Dividends to stockholders (Line 35)		(548,000)			
50. Change in surplus as regards policyholders for the year (Line 38)	11,103,460	907,737	8,582,744	888,670	6,301,238
Gross Losses Paid (Page 9, Part 2, Cols. 1 & 2)					
51. Liability lines (Lines 11.1, 11.2, 16, 17.1, 17.2, 18.1, 18.2, 19.1, 19.2 & 19.3, 19.4)	107,042,385	83,958,931	67,216,499	56,233,972	40,120,272
52. Property lines (Lines 1, 2, 9, 12, 21 & 26)					
53. Property and liability combined lines (Lines 3, 4, 5, 8, 22 & 27)	294,500	807,820	21,800	233,543	726,961
54. All other lines (Lines 6, 10, 13, 14, 15, 23, 24, 28, 29 & 33)					
55. Nonproportional reinsurance lines (Lines 30, 31 & 32)					
56. Total (Line 34)	107,336,885	84,766,751	67,238,299	56,467,515	40,847,233
Net Losses Paid (Page 9, Part 2, Col. 4)					
57. Liability lines (Lines 11.1, 11.2, 16, 17.1, 17.2, 18.1, 18.2, 19.1, 19.2 & 19.3, 19.4)					
58. Property lines (Lines 1, 2, 9, 12, 21 & 26)					
59. Property and liability combined lines (Lines 3, 4, 5, 8, 22 & 27)					
60. All other lines (Lines 6, 10, 13, 14, 15, 23, 24, 28, 29 & 33)					
61. Nonproportional reinsurance lines (Lines 30, 31 & 32)					
62. Total (Line 34)					
Operating Percentages (Page 4) (Item divided by Page 4, Line 1) x 100.0					
63. Premiums earned (Line 1)	100.0	100.0	100.0	100.0	100.0
64. Losses incurred (Line 2)					
65. Loss expenses incurred (Line 3)					
66. Other underwriting expenses incurred (Line 4)					
67. Net underwriting gain (loss) (Line 8)					
Other Percentages					
68. Other underwriting expenses to net premiums written (Page 4, Lines 4 + 5 - 15 divided by Page 8, Part 1B, Col. 6, Line 34 x 100.0)					
69. Losses and loss expenses incurred to premiums earned (Page 4, Lines 2 + 3 divided by Page 4, Line 1 x 100.0)					
70. Net premiums written to policyholders' surplus (Page 8, Part 1B, Col. 6, Line 34 divided by Page 3, Line 35, Col. 1 x 100.0)					
One Year Loss Development (000 omitted)					
71. Development in estimated losses and loss expenses incurred prior to current year (Schedule P, Part 2 - Summary, Line 12, Col. 11)					
72. Percent of development of losses and loss expenses incurred to policyholders' surplus of prior year end (Line 71 above divided by Page 4, Line 21, Col. 1 x 100.0)					
Two Year Loss Development (000 omitted)					
73. Development in estimated losses and loss expenses incurred 2 years before the current year and prior year (Schedule P, Part 2 - Summary, Line 12, Col. 12)					
74. Percent of development of losses and loss expenses incurred to reported policyholders' surplus of second prior year end (Line 73 above divided by Page 4, Line 21, Col. 2 x 100.0)					

SCHEDULE D - SUMMARY BY COUNTRY
Long-Term Bonds and Stocks OWNED December 31 of Current Year

Description		1	2	3	4
		Book/Adjusted Carrying Value	Fair Value	Actual Cost	Par Value of Bonds
BONDS Governments (Including all obligations guaranteed by governments)	1. United States	34,530,699	34,851,867	34,740,658	33,745,152
	2. Canada				
	3. Other Countries				
	4. Totals	34,530,699	34,851,867	34,740,658	33,745,152
States, Territories and Possessions (Direct and guaranteed)	5. United States	1,973,452	1,972,830	1,973,190	2,000,000
	6. Canada				
	7. Other Countries				
	8. Totals	1,973,452	1,972,830	1,973,190	2,000,000
Political Subdivisions of States, Territories and Possessions (Direct and guaranteed)	9. United States				
	10. Canada				
	11. Other Countries				
	12. Totals				
Special revenue and special assessment obligations and all non-guaranteed obligations of agencies and authorities of governments and their political subdivisions	13. United States				
	14. Canada				
	15. Other Countries				
	16. Totals				
Public Utilities (unaffiliated)	17. United States	1,999,280	1,940,380	1,999,150	2,000,000
	18. Canada				
	19. Other Countries				
	20. Totals	1,999,280	1,940,380	1,999,150	2,000,000
Industrial and Miscellaneous and Credit Tenant Loans (unaffiliated)	21. United States	6,464,196	6,406,246	6,500,789	6,500,001
	22. Canada				
	23. Other Countries				
	24. Totals	6,464,196	6,406,246	6,500,789	6,500,001
Parent, Subsidiaries and Affiliates	25. Totals				
	26. Total Bonds	44,967,627	45,171,323	45,213,787	44,245,153
PREFERRED STOCKS Public Utilities (unaffiliated)	27. United States				
	28. Canada				
	29. Other Countries				
	30. Totals				
Banks, Trust and Insurance Companies (unaffiliated)	31. United States				
	32. Canada				
	33. Other Countries				
	34. Totals				
Industrial and Miscellaneous (unaffiliated)	35. United States				
	36. Canada				
	37. Other Countries				
	38. Totals				
Parent, Subsidiaries and Affiliates	39. Totals				
	40. Total Preferred Stocks				
COMMON STOCKS Public Utilities (unaffiliated)	41. United States				
	42. Canada				
	43. Other Countries				
	44. Totals				
Banks, Trust and Insurance Companies (unaffiliated)	45. United States				
	46. Canada				
	47. Other Countries				
	48. Totals				
Industrial and Miscellaneous (unaffiliated)	49. United States				
	50. Canada				
	51. Other Countries				
	52. Totals				
Parent, Subsidiaries and Affiliates	53. Totals				
	54. Total Common Stocks				
	55. Total Stocks				
	56. Total Bonds and Stocks	44,967,627	45,171,323	45,213,787	

SCHEDULE D - VERIFICATION BETWEEN YEARS
Bonds and Stocks

1. Book/adjusted carrying value of bonds and stocks, prior year	49,358,547	7. Amortization of premium	97,327
2. Cost of bonds and stocks acquired, Column 7, Part 3	4,926,880	8. Foreign Exchange Adjustment:	
3. Accrual of discount	46,185	8.1 Column 15, Part 1	
4. Increase (decrease) by adjustment:		8.2 Column 19, Part 2 Section 1	
4.1 Columns 12 - 14, Part 1		8.3 Column 16, Part 2, Section 2	
4.2 Column 15 - 17, Part 2, Section 1		8.4 Column 15, Part 4	
4.3 Column 15, Part 2, Section 2		9. Book/adjusted carrying value at end of current period	44,967,627
4.4 Column 11 - 13, Part 4		10. Total valuation allowance	
5. Total gain (loss), Column 19, Part 4	1,442	11. Subtotal (Lines 9 plus 10)	44,967,627
6. Deduct consideration for bonds and stocks disposed of Column 7, Part 4	9,268,100	12. Total nonadmitted amounts	
		13. Statement value of bonds and stocks, current period	44,967,627

NONE **Schedule P - Part 1 - Summary**

NONE **Schedule P - Part 2, 3, 4 - Summary**

SCHEDULE T - EXHIBIT OF PREMIUMS WRITTEN
Allocated by States and Territories

States, Etc.	1 Is Insurer Licensed? (Yes or No)	Gross Premiums, Including Policy and Membership Fees Less Return Premiums and Premiums on Policies Not Taken		4 Dividends Paid or Credited to Policyholders on Direct Business	5 Direct Losses Paid (Deducting Salvage)	6 Direct Losses Incurred	7 Direct Losses Unpaid	8 Finance and Service Charges Not Included in Premiums	9 Direct Premium Written for Federal Purchasing Groups (Included in Col. 2)
		2 Direct Premiums Written	3 Direct Premiums Earned						
1. Alabama	AL	YES	6,824,620	6,824,620	1,575,861	4,022,341	6,587,883		
2. Alaska	AK	NO							
3. Arizona	AZ	NO							
4. Arkansas	AR	YES	8,004,591	8,004,591	1,832,126	4,661,669	7,221,265		
5. California	CA	NO							
6. Colorado	CO	NO							
7. Connecticut	CT	NO							
8. Delaware	DE	NO							
9. Dist. Columbia	DC	NO							
10. Florida	FL	YES	47,907,622	47,907,622	938,363	16,204,104	29,095,641	61,729,677	
11. Georgia	GA	YES	35,110,068	35,110,068	15,831,767	21,979,707	36,691,534		
12. Hawaii	HI	NO							
13. Idaho	ID	NO							
14. Illinois	IL	NO							
15. Indiana	IN	NO							
16. Iowa	IA	NO							
17. Kansas	KS	NO							
18. Kentucky	KY	YES	36,972,381	36,972,381	13,938,265	26,821,198	36,710,617		
19. Louisiana	LA	YES	50,455,462	50,455,462	260,950	19,184,231	29,435,045	74,226,426	
20. Maine	ME	NO							
21. Maryland	MD	NO							
22. Massachusetts	MA	NO							
23. Michigan	MI	NO							
24. Minnesota	MN	NO							
25. Mississippi	MS	YES	34,913,826	34,913,826	11,916,442	20,454,872	35,947,302		
26. Missouri	MO	NO							
27. Montana	MT	NO							
28. Nebraska	NE	NO							
29. Nevada	NV	NO							
30. New Hampshire	NH	NO							
31. New Jersey	NJ	NO							
32. New Mexico	NM	NO							
33. New York	NY	NO							
34. No. Carolina	NC	YES	11,580,240	11,580,240	2,102,783	7,162,817	7,052,445		
35. No. Dakota	ND	NO							
36. Ohio	OH	NO							
37. Oklahoma	OK	NO							
38. Oregon	OR	NO							
39. Pennsylvania	PA	NO							
40. Rhode Island	RI	NO							
41. So. Carolina	SC	YES	28,772,627	28,772,627	8,527,156	17,828,518	28,363,047		
42. So. Dakota	SD	NO							
43. Tennessee	TN	YES	29,774,101	29,774,101	12,549,762	18,278,977	34,940,341		
44. Texas	TX	NO							
45. Utah	UT	NO							
46. Vermont	VT	NO							
47. Virginia	VA	NO							
48. Washington	WA	NO							
49. West Virginia	WV	NO							
50. Wisconsin	WI	NO							
51. Wyoming	WY	NO							
52. American Samoa	AS	NO							
53. Guam	GU	NO							
54. Puerto Rico	PR	NO							
55. U.S. Virgin Islands	VI	NO							
56. Northern Mariana Islands	MP	NO							
57. Canada	CN	NO							
58. Aggregate other alien	OT	X X X							
59. Totals	(a) 10		290,315,538	290,315,538	1,199,313	103,662,497	179,740,785	329,470,537	

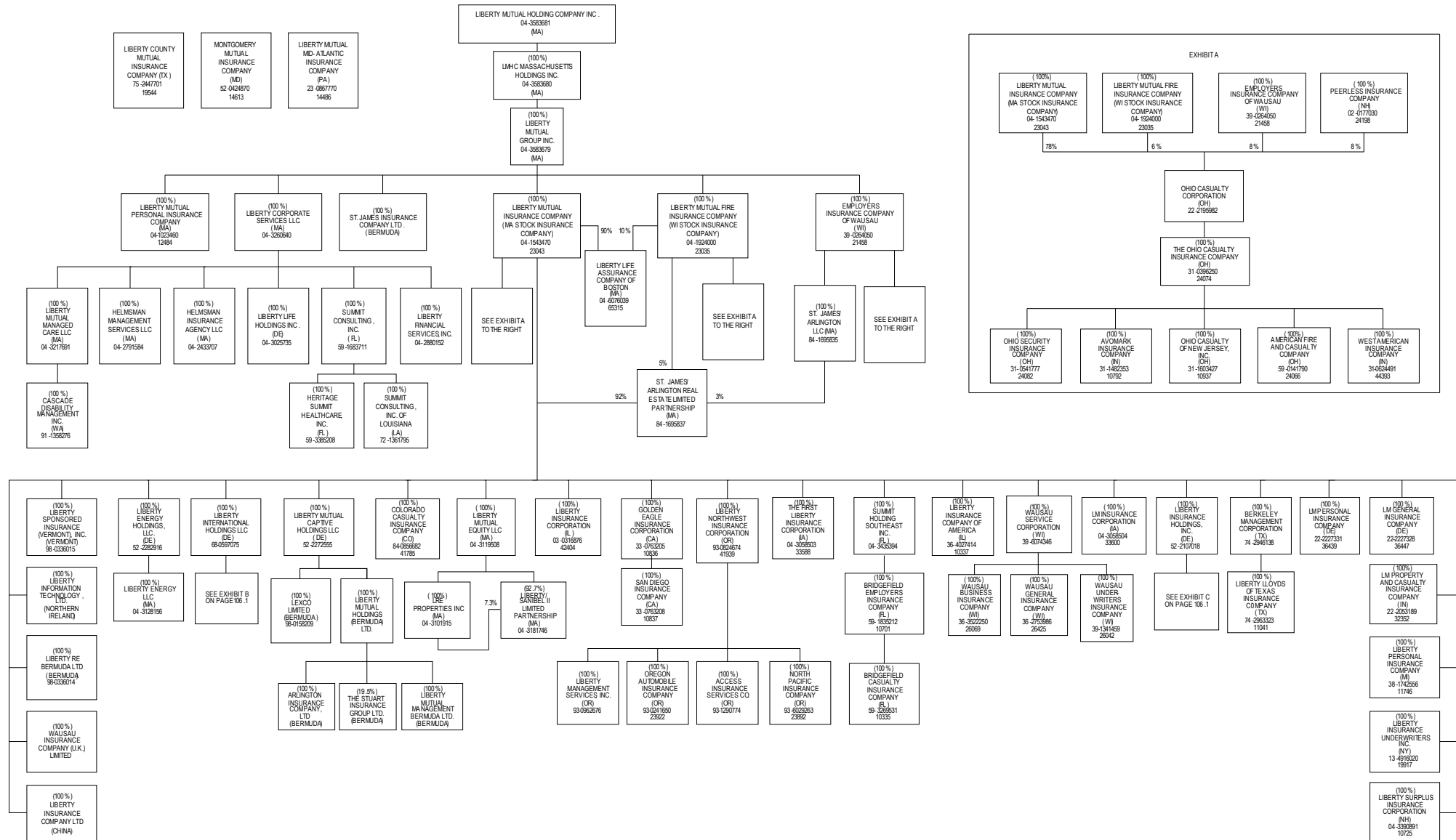
DETAILS OF WRITE-INS									
5801.	X X X								
5802.	X X X								
5803.	X X X								
5898. Summary of remaining write-ins for Line 58 from overflow page	X X X								
5899. Totals (Lines 5801 through 5803 + 5898) (Line 58 above)	X X X								

Explanation of basis of allocation of premiums by states, etc.

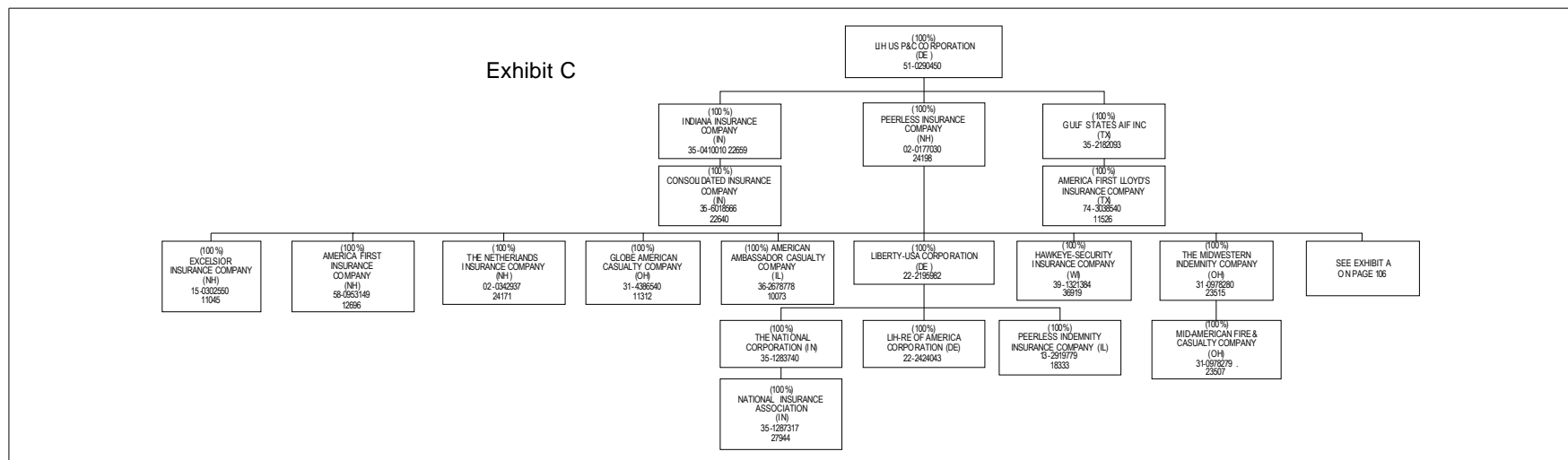
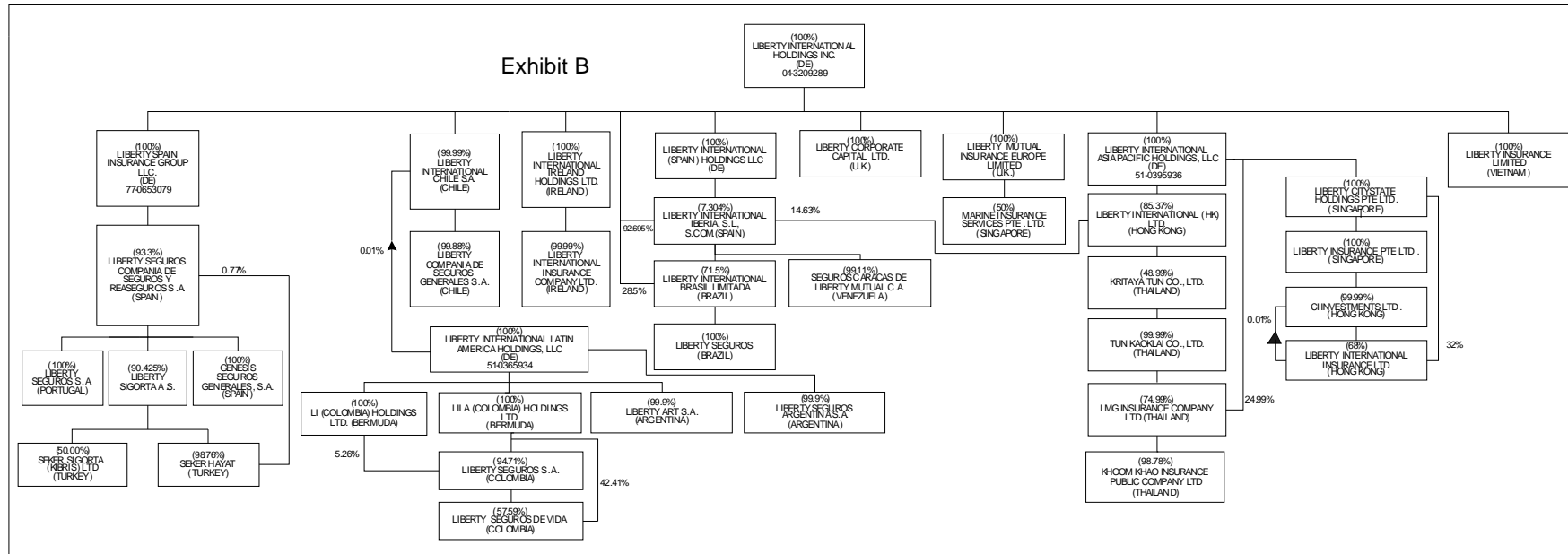
- *Location of coverage - Fire, Allied Lines, Homeowners Multi Peril, Commercial Multi Peril, Earthquake, Boiler and Machinery
- *States of Jurisdiction under which payrolls and resulting premiums are developed - Worker's Compensation
- *Location of Principal place of garaging of each individual car - Auto Liability, Auto Physical Damage
- *Principal Location of business or location of coverage - Liability other than Auto, Fidelity
- *Point of origin of shipment or principal location of assured - Inland Marine
- *State in which employees regularly work - Group Accident and Health
- *Location of Court - Surety
- *Address of Assured - Other Accident and Health
- *Location of Properties covered - Burglary and Theft
- *Principal Location of Assured - Ocean Marine, Credit
- *Primary residence of Assured - Aircraft (all perils)

(a) Insert the number of yes responses except for Canada and Other Alien.

SCHEDULE Y - INFORMATION CONCERNING ACTIVITIES OF INSURER MEMBERS OF A HOLDING COMPANY GROUP
PART 1 - ORGANIZATIONAL CHART



SCHEDULE Y - INFORMATION CONCERNING ACTIVITIES OF INSURER MEMBERS OF A HOLDING COMPANY GROUP
PART 1 - ORGANIZATIONAL CHART



OVERFLOW PAGE FOR WRITE-INS

ALPHABETICAL INDEX TO PROPERTY AND CASUALTY ANNUAL STATEMENT

Assets	2	Schedule DB - Part D - Section 3	E21
Cash Flow	5	Schedule DB - Part D - Verification Between Years	31
Exhibit of Capital Gains (Losses)	12	Schedule DB - Part E - Section 1	E22
Exhibit of Net Investment Income	12	Schedule DB - Part E - Verification	31
Exhibit of Nonadmitted Assets	13	Schedule DB - Part F - Section 1	32
Exhibit of Premiums and Losses (State Page)	20	Schedule DB - Part F - Section 2	33
Five-Year Historical Data	18	Schedule E - Part 1 - Cash	E23
General Interrogatories	16	Schedule E - Part 2 - Cash Equivalents	E24
Jurat Page	1	Schedule E - Part 3 - Special Deposits	E25
Liabilities, Surplus and Other Funds	3	Schedule F - Part 1	34
Notes To Financial Statements	14	Schedule F - Part 2	35
Overflow Page For Write-ins	109	Schedule F - Part 3	36
Schedule A - Part 1	E01	Schedule F - Part 4	37
Schedule A - Part 2	E02	Schedule F - Part 5	38
Schedule A - Part 3	E03	Schedule F - Part 6	39
Schedule A - Verification Between Years	21	Schedule F - Part 7	40
Schedule B - Part 1	E04	Schedule F - Part 8	41
Schedule B - Part 2	E05	Schedule H - Accident and Health Exhibit - Part 1	42
Schedule B - Verification Between Years	21	Schedule H - Part 5 - Health Claims	44
Schedule BA - Part 1	E06	Schedule H - Parts - 2, 3, and 4	43
Schedule BA - Part 2	E07	Schedule P - Part 1 - Analysis of Losses and Loss Expenses	45
Schedule BA - Verification Between Years	21	Schedule P - Part 1A - Homeowners/Farmowners	47
Schedule D - Part 1	E08	Schedule P - Part 1B - Private Passenger Auto Liability/Medical	48
Schedule D - Part 1A - Section 1	23	Schedule P - Part 1C - Commercial Auto/Truck Liability/Medical	49
Schedule D - Part 1A - Section 2	26	Schedule P - Part 1D - Workers' Compensation	50
Schedule D - Part 2 - Section 1	E09	Schedule P - Part 1E - Commercial Multiple Peril	51
Schedule D - Part 2 - Section 2	E10	Schedule P - Part 1F - Section 1 - Medical Malpractice - Occurrence	52
Schedule D - Part 3	E11	Schedule P - Part 1F - Section 2 - Medical Malpractice - Claims-Made	53
Schedule D - Part 4	E12	Schedule P - Part 1G - Spec. Liab. (Ocean, Marine, Aircr.(A.P.), Boiler & Mach.)	54
Schedule D - Part 5	E13	Schedule P - Part 1H - Section 1 - Other Liability - Occurrence	55
Schedule D - Part 6 - Section 1	E14	Schedule P - Part 1H - Section 2 - Other Liability - Claims-Made	56
Schedule D - Part 6 - Section 2	E14	Schedule P - Part 1I - Spec. Prop. (Fire, A.L., Inld. Ma., Earth., Burg. & Thft.)	57
Schedule D - Summary By Country	22	Schedule P - Part 1J - Auto Physical Damage	58
Schedule D - Verification Between Years	22	Schedule P - Part 1K - Fidelity/Surety	59
Schedule DA - Part 1	E15	Schedule P - Part 1L - Other (Including Credit, Accident and Health)	60
Schedule DA - Part 2 - Verification Between Years	29	Schedule P - Part 1M - International	61
Schedule DB - Part A - Section 1	E16	Schedule P - Part 1N - Reinsurance	62
Schedule DB - Part A - Section 2	E16	Schedule P - Part 1O - Reinsurance	63
Schedule DB - Part A - Section 3	E17	Schedule P - Part 1P - Reinsurance	64
Schedule DB - Part A - Verification Between Years	30	Schedule P - Part 1R - Section 1 - Products Liability - Occurrence	65
Schedule DB - Part B - Section 1	E17	Schedule P - Part 1R - Section 2 - Products Liability - Claims-Made	66
Schedule DB - Part B - Section 2	E18	Schedule P - Part 1S - Financial Guaranty/Mortgage Guaranty	67
Schedule DB - Part B - Section 3	E18	Schedule P - Part 2A - Homeowners/Farmowners	68
Schedule DB - Part B - Verification Between Years	30	Schedule P - Part 2B - Private Passenger Auto Liability/Medical	68
Schedule DB - Part C - Section 1	E19	Schedule P - Part 2C - Commercial Auto/Truck Liability/Medical	68
Schedule DB - Part C - Section 2	E19	Schedule P - Part 2D - Workers' Compensation	68
Schedule DB - Part C - Section 3	E20	Schedule P - Part 2E - Commercial Multiple Peril	68
Schedule DB - Part C - Verification Between Years	31	Schedule P - Part 2F - Section 1 - Medical Malpractice - Occurrence	69
Schedule DB - Part D - Section 1	E20	Schedule P - Part 2F - Section 2 - Medical Malpractice - Claims-Made	69
Schedule DB - Part D - Section 2	E21	Schedule P - Part 2G - Spec. Liab. (Ocean, Marine, Aircr.(A.P.), Boiler & Mach.)	69

ALPHABETICAL INDEX (Continued)

Schedule P - Part 2H - Section 1 - Other Liability - Occurrence	69	Schedule P - Part 4O - Reinsurance	81
Schedule P - Part 2H - Section 2 - Other Liability - Claims-Made	69	Schedule P - Part 4P - Reinsurance	81
Schedule P - Part 2I - Spec. Prop. (Fire, A.L., Inld. Ma., Earth., Burg. & Thft.)	70	Schedule P - Part 4R - Section 1 - Products Liability - Occurrence	82
Schedule P - Part 2J - Auto Physical Damage	70	Schedule P - Part 4R - Section 2 - Products Liability - Claims-Made	82
Schedule P - Part 2K - Fidelity, Surety	70	Schedule P - Part 4S - Financial Guaranty/Mortgage Guaranty	82
Schedule P - Part 2L - Other (Including Credit, Accident and Health)	70	Schedule P - Part 5A - Homeowners/Farmowners	83
Schedule P - Part 2M - International	70	Schedule P - Part 5B - Private Passenger Auto Liability/Medical	84
Schedule P - Part 2N - Reinsurance	71	Schedule P - Part 5C - Commercial Auto/Truck Liability/Medical	85
Schedule P - Part 2O - Reinsurance	71	Schedule P - Part 5D - Workers' Compensation	86
Schedule P - Part 2P - Reinsurance	71	Schedule P - Part 5E - Commercial Multiple Peril	87
Schedule P - Part 2R - Section 1 - Products Liability - Occurrence	72	Schedule P - Part 5F - Medical Malpractice - Claims-Made	89
Schedule P - Part 2R - Section 2 - Products Liability - Claims-Made	72	Schedule P - Part 5F - Medical Malpractice - Occurrence	88
Schedule P - Part 2S - Financial Guaranty/Mortgage Guaranty	72	Schedule P - Part 5H - Other Liability - Claims-Made	91
Schedule P - Part 3A - Homeowners/Farmowners	73	Schedule P - Part 5H - Other Liability - Occurrence	90
Schedule P - Part 3B - Private Passenger Auto Liability/Medical	73	Schedule P - Part 5R - Products Liability - Claims-Made	93
Schedule P - Part 3C - Commercial Auto/Truck Liability/Medical	73	Schedule P - Part 5R - Products Liability - Occurrence	92
Schedule P - Part 3D - Workers' Compensation	73	Schedule P - Part 6C - Commercial Auto/Truck Liability/Medical	94
Schedule P - Part 3E - Commercial Multiple Peril	73	Schedule P - Part 6D - Workers' Compensation	94
Schedule P - Part 3F - Section 1 - Medical Malpractice - Occurrence	74	Schedule P - Part 6E - Commercial Multiple Peril	95
Schedule P - Part 3F - Section 2 - Medical Malpractice - Claims-Made	74	Schedule P - Part 6H - Other Liability - Claims-Made	96
Schedule P - Part 3G - Spec. Liab. (Ocean, Marine, Aircr.(A.P.), Boiler & Mach.)	74	Schedule P - Part 6H - Other Liability - Occurrence	95
Schedule P - Part 3H - Section 1 - Other Liability - Occurrence	74	Schedule P - Part 6M - International	96
Schedule P - Part 3H - Section 2 - Other Liability - Claims-Made	74	Schedule P - Part 6N - Reinsurance	97
Schedule P - Part 3I - Spec. Prop. (Fire, A.L., Inld. Ma., Earth., Burg. & Thft.)	75	Schedule P - Part 6O - Reinsurance	97
Schedule P - Part 3J - Auto Physical Damage	75	Schedule P - Part 6R - Products Liability - Claims-Made	98
Schedule P - Part 3K - Fidelity/Surety	75	Schedule P - Part 6R - Products Liability - Occurrence	98
Schedule P - Part 3L - Other (Including Credit, Accident and Health)	75	Schedule P - Part 7A - Primary Loss Sensitive Contracts	99
Schedule P - Part 3M - International	75	Schedule P - Part 7B - Reinsurance Loss Sensitive Contracts	101
Schedule P - Part 3N - Reinsurance	76	Schedule P - Parts 2, 3 and 4 - Summary	46
Schedule P - Part 3O - Reinsurance	76	Schedule P Interrogatories	103
Schedule P - Part 3P - Reinsurance	76	Schedule T - Exhibit of Premiums Written	104
Schedule P - Part 3R - Section 1 - Products Liability - Occurrence	77	Schedule T - Part 2 - Interstate Compact	105
Schedule P - Part 3R - Section 2 - Products Liability - Claims-Made	77	Schedule Y - Info. Concerning Activities of Insurer Mmbrs. of a Holding Co. Grp.	106
Schedule P - Part 3S - Financial Guaranty/Mortgage Guaranty	77	Schedule Y - Part 2 - Summary of Insurer's Transactions With Any Affiliates	107
Schedule P - Part 4A - Homeowners/Farmowners	78	Statement of Income	4
Schedule P - Part 4B - Private Passenger Auto Liability/Medical	78	Summary Investment Schedule	15
Schedule P - Part 4C - Commercial Auto/Truck Liability/Medical	78	Underwriting and Investment Exhibit Part 1	6
Schedule P - Part 4D - Workers' Compensation	78	Underwriting and Investment Exhibit Part 1A	7
Schedule P - Part 4E - Commercial Multiple Peril	78	Underwriting and Investment Exhibit Part 1B	8
Schedule P - Part 4F - Section 1 - Medical Malpractice - Occurrence	79	Underwriting and Investment Exhibit Part 2	9
Schedule P - Part 4F - Section 2 - Medical Malpractice - Claims-Made	79	Underwriting and Investment Exhibit Part 2A	10
Schedule P - Part 4G - Spec. Liab. (Ocean, Marine, Aircr.(A.P.), Boiler & Mach.)	79	Underwriting and Investment Exhibit Part 3	11
Schedule P - Part 4H - Section 1 - Other Liability - Occurrence	79		
Schedule P - Part 4H - Section 2 - Other Liability - Claims-Made	79		
Schedule P - Part 4I - Spec. Prop. (Fire, A.L., Inld. Ma., Earth., Burg. & Thft.)	80		
Schedule P - Part 4J - Auto Physical Damage	80		
Schedule P - Part 4K - Fidelity/Surety	80		
Schedule P - Part 4L - Other (Including Credit, Accident and Health)	80		
Schedule P - Part 4M - International	80		
Schedule P - Part 4N - Reinsurance	81		