



**ANNUAL STATEMENT**  
 FOR THE YEAR ENDED DECEMBER 31, 2007  
 OF THE CONDITION AND AFFAIRS OF THE  
**AMERICAN FIRE AND CASUALTY COMPANY**

NAIC Group Code 0111, 0148 NAIC Company Code 24066 Employer's ID Number 59-0141790  
(Current Period) (Prior Period)

Organized under the Laws of Ohio, State of Domicile or Port of Entry Ohio

Country of Domicile US

Incorporated/Organized January 1, 1906 Commenced Business January 3, 1933

Statutory Home Office 9450 Seward Road, Fairfield, Ohio 45014  
(Street and Number, City or Town, State and Zip Code)

Main Administrative Office 9450 Seward Road, Fairfield, Ohio 45014 513-603-2400  
(Street and Number, City or Town, State and Zip Code) (Area Code) (Telephone Number)

Mail Address 9450 Seward Road, Fairfield, Ohio 45014  
(Street and Number or P. O. Box, City or Town, State and Zip Code)

Primary Location of Books and Records 175 Berkeley Street, Boston, Massachusetts 02116  
(Street and Number, City or Town, State and Zip Code)  
617-357-9500  
(Area Code) (Telephone Number)

Internet Website Address http://www.libertymutual.com

Statutory Statement Contact Elizabeth A. Busby 513-603-2271  
(Name) (Area Code) (Telephone Number) (Extension)  
finance@ocas.com 513-603-3179  
(E-Mail Address) (Fax Number)

**OFFICERS**

Gary Richard Gregg# (Chairman/Pres/CFO)  
 Edmund Campion Kenealy# (Secretary)  
 James Francis Dore# (CFO/Treasurer)

**OTHER OFFICERS**

Anthony Alexander Fontanes# (Executive VP/CIO)  
 Joseph Anthony Gilles# (Executive VP)  
 Scott Rhodes Goodby# (Executive VP/COO)

**DIRECTORS OR TRUSTEES**

Gary Richard Gregg#  
 James Francis Dore#  
 John Derek Doyle#  
 Joseph Anthony Gilles#  
 Scott Rhodes Goodby#  
 Christopher Charles Mansfield#

State of Massachusetts } SS  
 County of Suffolk }

The officers of this reporting entity being duly sworn, each depose and say that they are the described officers of said reporting entity, and that on the reporting period stated above, all of the herein described assets were the absolute property of the said reporting entity, free and clear from any liens or claims thereon, except as herein stated, and that this statement, together with related exhibits, schedules and explanations therein contained, annexed or referred to, is a full and true statement of all the assets and liabilities and of the condition and affairs of the said reporting entity as of the reporting period stated above, and of its income and deductions therefrom for the period ended, and have been completed in accordance with the NAIC Annual Statement Instructions and Accounting Practices and Procedures manual except to the extent that: (1) state law may differ; or, (2) that state rules or regulations require differences in reporting not related to accounting practices and procedures, according to the best of their information, knowledge and belief, respectively. Furthermore, the scope of this attestation by the described officers also includes the related corresponding electronic filing with the NAIC, when required, that is an exact copy (except for formatting differences due to electronic filing) of the enclosed statement. The electronic filing may be requested by various regulators in lieu of or in addition to the enclosed statement.

\_\_\_\_\_  
 Gary Richard Gregg#  
 Chairman/Pres/CEO

\_\_\_\_\_  
 Edmund Campion Kenealy#  
 Secretary

\_\_\_\_\_  
 James Francis Dore#  
 CFO/Treasurer

Subscribed and sworn to before me this  
 31st day of January, 2008

- a. Is this an original filing? Yes (X) No ( )
- b. If no: 1. State the amendment number \_\_\_\_\_
2. Date filed \_\_\_\_\_
3. Number of pages attached \_\_\_\_\_

**ASSETS**

|   | Current Year |                            |  | Prior Year                  |
|---|--------------|----------------------------|--|-----------------------------|
|   | 1<br>Assets  | 2<br>Nonadmitted<br>Assets | 3<br>Net Admitted<br>Assets (Column 1<br>minus Column 2) | 4<br>Net Admitted<br>Assets |
| 1. Bonds (Schedule D) .....   | 32,844,105   |                            | 32,844,105   | 33,110,594                  |
| 2. Stocks (Schedule D):   |              |                            |  |                             |
| 2.1 Preferred stocks .....  | 1,231,250    |                            | 1,231,250  | 1,250,000                   |
| 2.2 Common stocks .....   |              |                            |  |                             |
| 3. Mortgage loans on real estate (Schedule B):  |              |                            |  |                             |
| 3.1 First liens .....   |              |                            |  |                             |
| 3.2 Other than first liens .....  |              |                            |  |                             |
| 4. Real estate (Schedule A):  |              |                            |  |                             |
| 4.1 Properties occupied by the company (less \$ ..... encumbrances) .....   |              |                            |  |                             |
| 4.2 Properties held for the production of income (less \$ ..... encumbrances) .....   |              |                            |  |                             |
| 4.3 Properties held for sale (less \$ ..... encumbrances) .....   |              |                            |  |                             |
| 5. Cash (\$ ..... 1,524,542, Schedule E - Part 1), cash equivalents (\$ ....., Schedule E - Part 2)<br>and short-term investments (\$ ....., Schedule DA) ..... | 1,524,542    |                            | 1,524,542  | 3,239,793                   |
| 6. Contract loans (including \$ ..... premium notes) .....  |              |                            |  |                             |
| 7. Other invested assets (Schedule BA) .....  |              |                            |  |                             |
| 8. Receivables for securities .....   |              |                            |  |                             |
| 9. Aggregate write-ins for invested assets .....  |              |                            |  |                             |
| 10. Subtotals, cash and invested assets (Line 1 through Line 9) .....   | 35,599,897   |                            | 35,599,897   | 37,600,387                  |
| 11. Title plants less \$ ..... charged off (for Title insurers only) .....  |              |                            |  |                             |
| 12. Investment income due and accrued .....   | 562,323      |                            | 562,323  | 520,252                     |
| 13. Premiums and considerations:  |              |                            |  |                             |
| 13.1 Uncollected premiums and agents' balances in the course of collection .....  |              |                            |  |                             |
| 13.2 Deferred premiums, agents' balances and installments booked but deferred and not yet due<br>(including \$ ..... earned but unbilled premiums) .....        |              |                            |  |                             |
| 13.3 Accrued retrospective premiums .....   |              |                            |  |                             |
| 14. Reinsurance:  |              |                            |  |                             |
| 14.1 Amounts recoverable from reinsurers .....  | 220,734      |                            | 220,734  |                             |
| 14.2 Funds held by or deposited with reinsured companies .....  |              |                            |  |                             |
| 14.3 Other amounts receivable under reinsurance contracts .....   |              |                            |  |                             |
| 15. Amounts receivable relating to uninsured plans .....  |              |                            |  |                             |
| 16.1 Current federal and foreign income tax recoverable and interest thereon .....  | 649,758      |                            | 649,758  | 818,504                     |
| 16.2 Net deferred tax asset .....   |              |                            |  |                             |
| 17. Guaranty funds receivable or on deposit .....   |              |                            |  |                             |
| 18. Electronic data processing equipment and software .....   |              |                            |  |                             |
| 19. Furniture and equipment, including health care delivery assets (\$ ..... ) .....  |              |                            |  |                             |
| 20. Net adjustment in assets and liabilities due to foreign exchange rates .....  |              |                            |  |                             |
| 21. Receivables from parent, subsidiaries and affiliates .....  |              |                            |  | 22,590                      |
| 22. Health care (\$ ..... ) and other amounts receivable .....  |              |                            |  |                             |
| 23. Aggregate write-ins for other than invested assets .....  |              |                            |  |                             |
| 24. Total assets excluding Separate Accounts, Segregated Accounts and Protected Cell Accounts (Line 10 to Line 23) .....  | 37,032,712   |                            | 37,032,712   | 38,961,733                  |
| 25. From Separate Accounts, Segregated Accounts and Protected Cell Accounts .....   |              |                            |  |                             |
| 26. TOTALS (Line 24 and Line 25) .....  | 37,032,712   |                            | 37,032,712   | 38,961,733                  |
| <b>DETAILS OF WRITE-INS</b>   |              |                            |  |                             |
| 0901. ....  |              |                            |  |                             |
| 0902. ....  |              |                            |  |                             |
| 0903. ....  |              |                            |  |                             |
| 0998. Summary of remaining write-ins for Line 9 from overflow page .....  |              |                            |  |                             |
| 0999. Totals (Line 0901 through Line 0903 plus Line 0998) (Line 9 above) .....  |              |                            |  |                             |
| 2301. ....  |              |                            |  |                             |
| 2302. ....  |              |                            |  |                             |
| 2303. ....  |              |                            |  |                             |
| 2398. Summary of remaining write-ins for Line 23 from overflow page .....   |              |                            |  |                             |
| 2399. Totals (Line 2301 through Line 2303 plus Line 2398) (Line 23 above) .....   |              |                            |  |                             |

**LIABILITIES, SURPLUS AND OTHER FUNDS**

|  | 1<br>Current Year | 2<br>Prior Year |
|--|-------------------|-----------------|
| 1. Losses (Part 2A, Line 34, Column 8) .....   |                   |                 |
| 2. Reinsurance payable on paid losses and loss adjustment expenses (Schedule F, Part 1, Column 6) .....                |                   |                 |
| 3. Loss adjustment expenses (Part 2A, Line 34, Column 9) .....   |                   |                 |
| 4. Commissions payable, contingent commissions and other similar charges .....   |                   |                 |
| 5. Other expenses (excluding taxes, licenses and fees) .....   |                   |                 |
| 6. Taxes, licenses and fees (excluding federal and foreign income taxes) .....   |                   |                 |
| 7.1 Current federal and foreign income taxes (including \$ .....   |                   |                 |
| 7.2 Net deferred tax liability .....   | 1,052,939         | 1,072,369       |
| 8. Borrowed money \$ .....   |                   |                 |
| 9. Unearned premiums (Part 1A, Line 37, Column 5) (after deducting unearned premiums for ceded reinsurance of \$ ..... |                   |                 |
| 10. Advance premium .....  |                   |                 |
| 11. Dividends declared and unpaid:   |                   |                 |
| 11.1 Stockholders .....  |                   |                 |
| 11.2 Policyholders .....   |                   |                 |
| 12. Ceded reinsurance premiums payable (net of ceding commissions) .....   |                   |                 |
| 13. Funds held by company under reinsurance treaties (Schedule F, Part 3, Column 19) .....                             |                   |                 |
| 14. Amounts withheld or retained by company for account of others .....  |                   |                 |
| 15. Remittances and items not allocated .....  |                   |                 |
| 16. Provision for reinsurance (Schedule F, Part 7) .....   | 68,349            | 66,450          |
| 17. Net adjustments in assets and liabilities due to foreign exchange rates .....                                      |                   |                 |
| 18. Drafts outstanding .....   |                   |                 |
| 19. Payable to parent, subsidiaries and affiliates .....   | 223,351           |                 |
| 20. Payable for securities .....   |                   |                 |
| 21. Liability for amounts held under uninsured plans .....   |                   |                 |
| 22. Capital notes \$ .....   |                   |                 |
| 23. Aggregate write-ins for liabilities .....  |                   |                 |
| 24. Total liabilities excluding protected cell liabilities (Line 1 through Line 23) .....                              | 1,344,639         | 1,138,819       |
| 25. Protected cell liabilities .....   |                   |                 |
| 26. Total liabilities (Line 24 and Line 25) .....  | 1,344,639         | 1,138,819       |
| 27. Aggregate write-ins for special surplus funds .....  |                   |                 |
| 28. Common capital stock .....   | 3,374,043         | 3,374,043       |
| 29. Preferred capital stock .....  |                   |                 |
| 30. Aggregate write-ins for other than special surplus funds .....   |                   |                 |
| 31. Surplus notes .....  |                   |                 |
| 32. Gross paid in and contributed surplus .....  | 13,648,270        | 13,648,270      |
| 33. Unassigned funds (surplus) .....   | 18,665,759        | 20,800,600      |
| 34. Less treasury stock, at cost:  |                   |                 |
| 34.1 .....   |                   |                 |
| 34.2 .....   |                   |                 |
| 35. Surplus as regards policyholders (Line 27 to Line 33, less Line 34) (Page 4, Line 39) .....                        | 35,688,072        | 37,822,913      |
| 36. Totals (Page 2, Line 26, Column 3) .....   | 37,032,711        | 38,961,732      |
| <b>DETAILS OF WRITE-INS</b>  |                   |                 |
| 2301. ....   |                   |                 |
| 2302. ....   |                   |                 |
| 2303. ....   |                   |                 |
| 2398. Summary of remaining write-ins for Line 23 from overflow page .....  |                   |                 |
| 2399. Totals (Line 2301 through Line 2303 plus Line 2398) (Line 23 above) .....  |                   |                 |
| <hr/>  |                   |                 |
| 2701. ....   |                   |                 |
| 2702. ....   |                   |                 |
| 2703. ....   |                   |                 |
| 2798. Summary of remaining write-ins for Line 27 from overflow page .....  |                   |                 |
| 2799. Totals (Line 2701 through Line 2703 plus Line 2798) (Line 27 above) .....  |                   |                 |
| <hr/>  |                   |                 |
| 3001. ....   |                   |                 |
| 3002. ....   |                   |                 |
| 3003. ....   |                   |                 |
| 3098. Summary of remaining write-ins for Line 30 from overflow page .....  |                   |                 |
| 3099. Totals (Line 3001 through Line 3003 plus Line 3098) (Line 30 above) .....  |                   |                 |

**STATEMENT OF INCOME**

| UNDERWRITING INCOME  | 1<br>Current Year | 2<br>Prior Year |
|--|-------------------|-----------------|
| 1. Premiums earned (Part 1, Line 34, Column 4) .....   |                   |                 |
| DEDUCTIONS   |                   |                 |
| 2. Losses incurred (Part 2, Line 34, Column 7) .....   |                   |                 |
| 3. Loss expenses incurred (Part 3, Line 25, Column 1) .....  |                   |                 |
| 4. Other underwriting expenses incurred (Part 3, Line 25, Column 2) .....  | 300               | 300             |
| 5. Aggregate write-ins for underwriting deductions .....   |                   |                 |
| 6. Total underwriting deductions (Line 2 through Line 5) .....   | 300               | 300             |
| 7. Net income of protected cells .....   |                   |                 |
| 8. Net underwriting gain (loss) (Line 1 minus Line 6 plus Line 7) .....  | (300)             | (300)           |
| INVESTMENT INCOME  |                   |                 |
| 9. Net investment income earned (Exhibit of Net Investment Income, Line 17) .....  | 1,908,086         | 1,911,837       |
| 10. Net realized capital gains (losses) less capital gains tax of \$ 51,494 (Exhibit of Capital Gains (Losses)) .....  | (50,784)          | (297,796)       |
| 11. Net investment gain (loss) (Line 9 plus Line 10) .....   | 1,857,302         | 1,614,041       |
| OTHER INCOME   |                   |                 |
| 12. Net gain (loss) from agents' or premium balances charged off (amount recovered \$ ....., amount charged off \$ .....) .....  |                   |                 |
| 13. Finance and service charges not included in premiums .....   |                   |                 |
| 14. Aggregate write-ins for miscellaneous income .....   |                   |                 |
| 15. Total other income (Line 12 through Line 14) .....   |                   |                 |
| 16. Net income before dividends to policyholders, after capital gains tax and before all other federal and foreign income taxes (Line 8 plus Line 11 plus Line 15) ..... | 1,857,002         | 1,613,741       |
| 17. Dividends to policyholders .....   |                   |                 |
| 18. Net income, after dividends to policyholders, after capital gains tax and before all other federal and foreign income taxes (Line 16 minus Line 17) .....            | 1,857,002         | 1,613,741       |
| 19. Federal and foreign income taxes incurred .....  | 490,623           | 597,302         |
| 20. Net income (Line 18 minus Line 19) (to Line 22) .....  | 1,366,379         | 1,016,439       |
| CAPITAL AND SURPLUS ACCOUNT  |                   |                 |
| 21. Surplus as regards policyholders, December 31 prior year (Page 4, Line 39, Column 2) .....   | 37,822,915        | 35,488,968      |
| 22. Net income (from Line 20) .....  | 1,366,379         | 1,016,439       |
| 23. Net transfers (to) from Protected Cell accounts .....  |                   |                 |
| 24. Change in net unrealized capital gains or (losses) less capital gains tax of \$ (6,563) .....  | (12,188)          |                 |
| 25. Change in net unrealized foreign exchange capital gain (loss) .....  |                   |                 |
| 26. Change in net deferred income tax .....  | 12,867            | 721,935         |
| 27. Change in nonadmitted assets (Exhibit of Nonadmitted Assets, Line 26, Column 3) .....  |                   |                 |
| 28. Change in provision for reinsurance (Page 3, Line 16, Column 2 minus Column 1) .....   | (1,899)           | 595,573         |
| 29. Change in surplus notes .....  |                   |                 |
| 30. Surplus (contributed to) withdrawn from protected cells .....  |                   |                 |
| 31. Cumulative effect of changes in accounting principles .....  |                   |                 |
| 32. Capital changes:   |                   |                 |
| 32.1 Paid in .....   |                   |                 |
| 32.2 Transferred from surplus (Stock Dividend) .....   |                   |                 |
| 32.3 Transferred to surplus .....  |                   |                 |
| 33. Surplus adjustments:   |                   |                 |
| 33.1 Paid in .....   |                   |                 |
| 33.2 Transferred to capital (Stock Dividend) .....   |                   |                 |
| 33.3 Transferred from capital .....  |                   |                 |
| 34. Net remittances from or (to) Home Office .....   |                   |                 |
| 35. Dividends to stockholders .....  | (3,500,000)       |                 |
| 36. Change in treasury stock (Page 3, Line 34.1 and Line 34.2, Column 2 minus Column 1) .....  |                   |                 |
| 37. Aggregate write-ins for gains and losses in surplus .....  |                   |                 |
| 38. Change in surplus as regards policyholders for the year (Line 22 through Line 37) .....  | (2,134,841)       | 2,333,947       |
| 39. Surplus as regards policyholders, December 31 current year (Line 21 plus Line 38) (Page 3, Line 35) .....  | 35,688,074        | 37,822,915      |
| <b>DETAILS OF WRITE-INS</b>  |                   |                 |
| 0501 .....   |                   |                 |
| 0502 .....   |                   |                 |
| 0503 .....   |                   |                 |
| 0598. Summary of remaining write-ins for Line 5 from overflow page .....   |                   |                 |
| 0599. Totals (Line 0501 through Line 0503 plus Line 0598) (Line 5 above) .....   |                   |                 |
| 1401 .....   |                   |                 |
| 1402 .....   |                   |                 |
| 1403 .....   |                   |                 |
| 1498. Summary of remaining write-ins for Line 14 from overflow page .....  |                   |                 |
| 1499. Totals (Line 1401 through Line 1403 plus Line 1498) (Line 14 above) .....  |                   |                 |
| 3701 .....   |                   |                 |
| 3702 .....   |                   |                 |
| 3703 .....   |                   |                 |
| 3798. Summary of remaining write-ins for Line 37 from overflow page .....  |                   |                 |
| 3799. Totals (Line 3701 through Line 3703 plus Line 3798) (Line 37 above) .....  |                   |                 |

## CASH FLOW

|  | 1            | 2           |
|--|--------------|-------------|
|  | Current Year | Prior Year  |
| <b>Cash from Operations</b>  |              |             |
| 1. Premiums collected net of reinsurance .....   |              |             |
| 2. Net investment income .....   | 1,990,797    | 1,953,537   |
| 3. Miscellaneous income .....  |              |             |
| 4. Total (Line 1 through Line 3) .....   | 1,990,797    | 1,953,537   |
| 5. Benefit and loss related payments .....   | 220,734      |             |
| 6. Net transfers to Separate Accounts, Segregated Accounts and Protected Cell Accounts .....                             |              |             |
| 7. Commissions, expenses paid and aggregate write-ins for deductions .....   | 300          | 300         |
| 8. Dividends paid to policyholders .....   |              |             |
| 9. Federal and foreign income taxes paid (recovered) net of \$ 51,495 tax on capital gains (losses) .....                | 373,371      | 3,009,550   |
| 10. Total (Line 5 through Line 9) .....  | 594,405      | 3,009,850   |
| 11. Net cash from operations (Line 4 minus Line 10) .....  | 1,396,392    | (1,056,313) |
| <b>Cash from Investments</b>   |              |             |
| 12. Proceeds from investments sold, matured or repaid:   |              |             |
| 12.1 Bonds .....   | 4,540,870    | 7,012,255   |
| 12.2 Stocks .....  |              |             |
| 12.3 Mortgage loans .....  |              |             |
| 12.4 Real estate .....   |              |             |
| 12.5 Other invested assets .....   |              |             |
| 12.6 Net gains or (losses) on cash, cash equivalents and short-term investments .....                                    |              | 75,000      |
| 12.7 Miscellaneous proceeds .....  |              |             |
| 12.8 Total investment proceeds (Line 12.1 through Line 12.7) .....   | 4,540,870    | 7,087,255   |
| 13. Cost of investments acquired (long-term only):   |              |             |
| 13.1 Bonds .....   | 4,398,453    | 10,372,975  |
| 13.2 Stocks .....  |              | 1,250,000   |
| 13.3 Mortgage loans .....  |              |             |
| 13.4 Real estate .....   |              |             |
| 13.5 Other invested assets .....   |              |             |
| 13.6 Miscellaneous applications .....  |              |             |
| 13.7 Total investments acquired (Line 13.1 through Line 13.6) .....  | 4,398,453    | 11,622,975  |
| 14. Net increase (decrease) in contract loans and premium notes .....  |              |             |
| 15. Net cash from investments (Line 12.8 minus Line 13.7 minus Line 14) .....  | 142,417      | (4,535,720) |
| <b>Cash from Financing and Miscellaneous Sources</b>   |              |             |
| 16. Cash provided (applied):   |              |             |
| 16.1 Surplus notes, capital notes .....  |              |             |
| 16.2 Capital and paid in surplus, less treasury stock .....  |              |             |
| 16.3 Borrowed funds .....  |              |             |
| 16.4 Net deposits on deposit-type contracts and other insurance liabilities .....  |              |             |
| 16.5 Dividends to stockholders .....   | 3,500,000    |             |
| 16.6 Other cash provided (applied) .....   | 245,940      | 6,574,616   |
| 17. Net cash from financing and miscellaneous sources (Line 16.1 through Line 16.4 minus Line 16.5 plus Line 16.6) ..... | (3,254,060)  | 6,574,616   |
| <b>RECONCILIATION OF CASH, CASH EQUIVALENTS AND SHORT-TERM INVESTMENTS</b>   |              |             |
| 18. Net change in cash, cash equivalents and short-term investments (Line 11 plus Line 15 plus Line 17) .....            | (1,715,251)  | 982,583     |
| 19. Cash, cash equivalents and short-term investments:   |              |             |
| 19.1 Beginning of period .....   | 3,239,793    | 2,257,209   |
| 19.2 End of year (Line 18 plus Line 19.1) .....  | 1,524,542    | 3,239,792   |

Note: Supplemental disclosures of cash flow information for non-cash transactions:

|               |  |  |
|---------------|--|--|
| 20.0001 ..... |  |  |
| 20.0002 ..... |  |  |
| 20.0003 ..... |  |  |
| 20.0004 ..... |  |  |
| 20.0005 ..... |  |  |
| 20.0006 ..... |  |  |
| 20.0007 ..... |  |  |
| 20.0008 ..... |  |  |
| 20.0009 ..... |  |  |
| 20.0010 ..... |  |  |

**UNDERWRITING AND INVESTMENT EXHIBIT**

PART 1 - PREMIUMS EARNED

| Line of Business  | 1<br>Net<br>Premiums<br>Written per<br>Column 6, Part 1B | 2<br>Unearned<br>Premiums<br>December 31<br>Prior Year-<br>per Column 3, Last<br>Year's Part 1 | 3<br>Unearned<br>Premiums<br>December 31<br>Current Year-<br>per Column 5<br>Part 1A | 4<br>Premiums<br>Earned<br>During Year<br>(Columns<br>1 plus 2 minus 3) |
|---|--|--|--|---|
| 1. Fire .....   |  |  |  |   |
| 2. Allied lines .....   |  |  |  |   |
| 3. Farmowners multiple peril .....  |  |  |  |   |
| 4. Homeowners multiple peril .....  |  |  |  |   |
| 5. Commercial multiple peril .....  |  |  |  |   |
| 6. Mortgage guaranty .....  |  |  |  |   |
| 8. Ocean marine .....   |  |  |  |   |
| 9. Inland marine .....  |  |  |  |   |
| 10. Financial guaranty .....  |  |  |  |   |
| 11.1 Medical malpractice - occurrence .....                                     |  |  |  |   |
| 11.2 Medical malpractice - claims-made .....                                    |  |  |  |   |
| 12. Earthquake .....  |  |  |  |   |
| 13. Group accident and health .....   |  |  |  |   |
| 14. Credit accident and health (group and individual) .....                     |  |  |  |   |
| 15. Other accident and health .....   |  |  |  |   |
| 16. Workers' compensation .....   |  |  |  |   |
| 17.1 Other liability - occurrence .....   |  |  |  |   |
| 17.2 Other liability - claims-made .....  |  |  |  |   |
| 18.1 Products liability - occurrence .....                                      |  |  |  |   |
| 18.2 Products liability - claims-made .....                                     |  |  |  |   |
| 19.1, 19.2 Private passenger auto liability .....                               |  |  |  |   |
| 19.3, 19.4 Commercial auto liability .....                                      |  |  |  |   |
| 21. Auto physical damage .....  |  |  |  |   |
| 22. Aircraft (all perils) .....   |  |  |  |   |
| 23. Fidelity .....  |  |  |  |   |
| 24. Surety .....  |  |  |  |   |
| 26. Burglary and theft .....  |  |  |  |   |
| 27. Boiler and machinery .....  |  |  |  |   |
| 28. Credit .....  |  |  |  |   |
| 29. International .....   |  |  |  |   |
| 30. Reinsurance - Nonproportional Assumed Property .....                        |  |  |  |   |
| 31. Reinsurance - Nonproportional Assumed Liability .....                       |  |  |  |   |
| 32. Reinsurance - Nonproportional Assumed Financial Lines .....                 |  |  |  |   |
| 33. Aggregate write-ins for other lines of business .....                       |  |  |  |   |
| 34. TOTALS .....  |  |  |  |   |
| <b>DETAILS OF WRITE-INS</b>   |  |  |  |   |
| 3301. ....  |  |  |  |   |
| 3302. ....  |  |  |  |   |
| 3303. ....  |  |  |  |   |
| 3398. Summary of remaining write-ins for Line 33 from overflow page .....       |  |  |  |   |
| 3399. Totals (Line 3301 through Line 3303 plus Line 3398) (Line 33 above) ..... |  |  |  |   |

**NONE**

**UNDERWRITING AND INVESTMENT EXHIBIT**

PART 1A-RECAPITULATION OF ALL PREMIUMS

| Line of Business  | 1<br>Amount Unearned<br>(Running One Year<br>or Less from<br>Date of Policy)<br>(a) | 2<br>Amount Unearned<br>(Running More Than<br>One Year from<br>Date of Policy)<br>(a) | 3<br>Earned<br>but<br>Unbilled<br>Premium | 4<br>Reserve for<br>Rate Credits and<br>Retrospective<br>Adjustments Based<br>on Experience | 5<br>Total Reserve<br>for Unearned<br>Premiums<br>Columns<br>1 + 2 + 3 + 4 |
|---|---|---|---|---|--|
| 1. Fire   |   |   |   |   |  |
| 2. Allied lines   |   |   |   |   |  |
| 3. Farmowners multiple peril  |   |   |   |   |  |
| 4. Homeowners multiple peril  |   |   |   |   |  |
| 5. Commercial multiple peril  |   |   |   |   |  |
| 6. Mortgage guaranty  |   |   |   |   |  |
| 8. Ocean marine   |   |   |   |   |  |
| 9. Inland marine  |   |   |   |   |  |
| 10. Financial guaranty  |   |   |   |   |  |
| 11.1 Medical malpractice - occurrence                                     |   |   |   |   |  |
| 11.2 Medical malpractice - claims-made                                    |   |   |   |   |  |
| 12. Earthquake  |   |   |   |   |  |
| 13. Group accident and health   |   |   |   |   |  |
| 14. Credit accident and health (group and individual)                     |   |   |   |   |  |
| 15. Other accident and health   |   |   |   |   |  |
| 16. Workers' compensation   |   |   |   |   |  |
| 17.1 Other liability - occurrence   |   |   |   |   |  |
| 17.2 Other liability - claims-made  |   |   |   |   |  |
| 18.1 Products liability - occurrence                                      |   |   |   |   |  |
| 18.2 Products liability - claims-made                                     |   |   |   |   |  |
| 19.1, 19.2 Private passenger auto liability                               |   |   |   |   |  |
| 19.3, 19.4 Commercial auto liability                                      |   |   |   |   |  |
| 21. Auto physical damage  |   |   |   |   |  |
| 22. Aircraft (all perils)   |   |   |   |   |  |
| 23. Fidelity  |   |   |   |   |  |
| 24. Surety  |   |   |   |   |  |
| 26. Burglary and theft  |   |   |   |   |  |
| 27. Boiler and machinery  |   |   |   |   |  |
| 28. Credit  |   |   |   |   |  |
| 29. International   |   |   |   |   |  |
| 30. Reinsurance - Nonproportional Assumed Property                        |   |   |   |   |  |
| 31. Reinsurance - Nonproportional Assumed Liability                       |   |   |   |   |  |
| 32. Reinsurance - Nonproportional Assumed Financial Lines                 |   |   |   |   |  |
| 33. Aggregate write-ins for other lines of business                       |   |   |   |   |  |
| 34. TOTALS  |   |   |   |   |  |
| 35. Accrued retrospective premiums based on experience                    |   |   |   |   |  |
| 36. Earned but unbilled premiums  |   |   |   |   |  |
| 37. Balance (Sum of Line 34 through Line 36)                              |   |   |   |   |  |
| <b>DETAILS OF WRITE-INS</b>   |   |   |   |   |  |
| 3301.   |   |   |   |   |  |
| 3302.   |   |   |   |   |  |
| 3303.   |   |   |   |   |  |
| 3398. Summary of remaining write-ins for Line 33 from overflow page       |   |   |   |   |  |
| 3399. Totals (Line 3301 through Line 3303 plus Line 3398) (Line 33 above) |   |   |   |   |  |

**NONE**

(a) State here basis of computation used in each case.

**UNDERWRITING AND INVESTMENT EXHIBIT**

**PART 1B-PREMIUMS WRITTEN**

| Line of Business  | 1<br>Direct<br>Business<br>(a) | Reinsurance Assumed     |                             | Reinsurance Ceded     |                           | 6<br>Net Premiums<br>Written<br>Columns<br>1 + 2 + 3 - 4 - 5 |
|---|--------------------------------|-------------------------|-----------------------------|-----------------------|---------------------------|--|
|   |                                | 2<br>From<br>Affiliates | 3<br>From<br>Non-Affiliates | 4<br>To<br>Affiliates | 5<br>To<br>Non-Affiliates |  |
| 1. Fire   | 388,897                        |                         |                             | 352,743               | 36,154                    |  |
| 2. Allied lines   | 355,164                        |                         |                             | 323,088               | 32,076                    |  |
| 3. Farmowners multiple peril  |                                |                         |                             |                       |                           |  |
| 4. Homeowners multiple peril  | 16,505,328                     |                         |                             | 16,028,126            | 477,202                   |  |
| 5. Commercial multiple peril  | 69,317,069                     |                         |                             | 66,510,189            | 2,806,880                 |  |
| 6. Mortgage guaranty  |                                |                         |                             |                       |                           |  |
| 8. Ocean marine   |                                |                         |                             |                       |                           |  |
| 9. Inland marine  | 579,572                        |                         |                             | 569,256               | 10,316                    |  |
| 10. Financial guaranty  |                                |                         |                             |                       |                           |  |
| 11.1 Medical malpractice - occurrence                                     |                                |                         |                             |                       |                           |  |
| 11.2 Medical malpractice - claims-made                                    |                                |                         |                             |                       |                           |  |
| 12. Earthquake  | 287,379                        |                         |                             | 279,823               | 7,556                     |  |
| 13. Group accident and health   |                                |                         |                             |                       |                           |  |
| 14. Credit accident and health (group and individual)                     |                                |                         |                             |                       |                           |  |
| 15. Other accident and health   |                                |                         |                             |                       |                           |  |
| 16. Workers' compensation   | 23,815,768                     |                         |                             | 22,357,938            | 1,457,830                 |  |
| 17.1 Other liability - occurrence   | 5,119,630                      |                         |                             | 5,028,837             | 90,793                    |  |
| 17.2 Other liability - claims-made  |                                |                         |                             |                       |                           |  |
| 18.1 Products liability - occurrence                                      | 1,776,753                      |                         |                             | 1,773,327             | 3,426                     |  |
| 18.2 Products liability - claims-made                                     |                                |                         |                             |                       |                           |  |
| 19.1, 19.2 Private passenger auto liability                               | 18,516,570                     |                         | 1,407                       | 18,269,826            | 248,151                   |  |
| 19.3, 19.4 Commercial auto liability                                      | 30,320,388                     |                         |                             | 30,230,416            | 89,972                    |  |
| 21. Auto physical damage  | 20,942,277                     |                         |                             | 20,942,277            |                           |  |
| 22. Aircraft (all perils)   |                                |                         |                             |                       |                           |  |
| 23. Fidelity  |                                |                         |                             |                       |                           |  |
| 24. Surety  | 860,358                        |                         |                             | 861,043               | (685)                     |  |
| 26. Burglary and theft  |                                |                         |                             |                       |                           |  |
| 27. Boiler and machinery  | 1,107                          |                         |                             |                       | 1,107                     |  |
| 28. Credit  |                                |                         |                             |                       |                           |  |
| 29. International   |                                |                         |                             |                       |                           |  |
| 30. Reinsurance - Nonproportional Assumed Property                        | X X X                          |                         |                             |                       |                           |  |
| 31. Reinsurance - Nonproportional Assumed Liability                       | X X X                          |                         |                             |                       |                           |  |
| 32. Reinsurance - Nonproportional Assumed Financial Lines                 | X X X                          |                         |                             |                       |                           |  |
| 33. Aggregate write-ins for other lines of business                       |                                |                         |                             |                       |                           |  |
| 34. TOTALS  | 188,786,260                    |                         | 1,407                       | 183,526,889           | 5,260,778                 |  |
| <b>DETAILS OF WRITE-INS</b>   |                                |                         |                             |                       |                           |  |
| 3301.   |                                |                         |                             |                       |                           |  |
| 3302.   |                                |                         |                             |                       |                           |  |
| 3303.   |                                |                         |                             |                       |                           |  |
| 3398. Summary of remaining write-ins for Line 33 from overflow page       |                                |                         |                             |                       |                           |  |
| 3399. Totals (Line 3301 through Line 3303 plus Line 3398) (Line 33 above) |                                |                         |                             |                       |                           |  |

(a) Does the company's direct premiums written include premiums recorded on an installment basis? Yes ( ) No (X)  
 If yes: 1. The amount of such installment premiums \$ .....  
 2. Amount at which such installment premiums would have been reported had they been recorded on an annualized basis \$ .....



ANNUAL STATEMENT FOR THE YEAR 2007 OF THE AMERICAN FIRE AND CASUALTY COMPANY

**UNDERWRITING AND INVESTMENT EXHIBIT**

PART 2 - LOSSES PAID AND INCURRED

| Line of Business  | Losses Paid Less Salvage |                             |                               |  | 5<br>Net Losses<br>Unpaid<br>Current Year<br>(Part 2A,<br>Column 8) | 6<br>Net Losses<br>Unpaid<br>Prior Year | 7<br>Losses<br>Incurred<br>Current Year<br>(Columns<br>4 plus 5 minus 6) | 8<br>Percentage of<br>Losses Incurred<br>(Column 7, Part 2)<br>to Premiums Earned<br>(Column 4, Part 1) |
|---|--------------------------|-----------------------------|-------------------------------|--|---|---|--|---|
|   | 1<br>Direct<br>Business  | 2<br>Reinsurance<br>Assumed | 3<br>Reinsurance<br>Recovered | 4<br>Net Payments<br>(Columns<br>1 plus 2 minus 3) |   |   |  |   |
| 1. Fire   | 9,860                    |                             | 9,860                         |  |   |   |  |   |
| 2. Allied lines   | 89,501                   |                             | 89,501                        |  |   |   |  |   |
| 3. Farmowners multiple peril  |                          |                             |                               |  |   |   |  |   |
| 4. Homeowners multiple peril  | 12,283,009               |                             | 12,283,009                    |  |   |   |  |   |
| 5. Commercial multiple peril  |                          |                             |                               |  |   |   |  |   |
| 6. Mortgage guaranty  | 20,462,152               |                             | 20,462,152                    |  |   |   |  |   |
| 8. Ocean marine   |                          |                             |                               |  |   |   |  |   |
| 9. Inland marine  | 171,878                  |                             | 171,878                       |  |   |   |  |   |
| 10. Financial guaranty  |                          |                             |                               |  |   |   |  |   |
| 11.1 Medical malpractice - occurrence                                     |                          |                             |                               |  |   |   |  |   |
| 11.2 Medical malpractice - claims-made                                    |                          |                             |                               |  |   |   |  |   |
| 12. Earthquake  |                          |                             |                               |  |   |   |  |   |
| 13. Group accident and health   |                          |                             |                               |  |   |   |  |   |
| 14. Credit accident and health (group and individual)                     |                          |                             |                               |  |   |   |  |   |
| 15. Other accident and health   |                          |                             |                               |  |   |   |  |   |
| 16. Workers' compensation   | 16,010,268               | 23                          | 16,010,291                    |  |   |   |  |   |
| 17.1 Other liability - occurrence   | 3,124,803                | 421,980                     | 3,546,783                     |  |   |   |  |   |
| 17.2 Other liability - claims-made  |                          |                             |                               |  |   |   |  |   |
| 18.1 Products liability - occurrence                                      | 1,203,047                |                             | 1,203,047                     |  |   |   |  |   |
| 18.2 Products liability - claims-made                                     |                          |                             |                               |  |   |   |  |   |
| 19.1, 19.2 Private passenger auto liability                               | 13,273,842               |                             | 13,273,842                    |  |   |   |  |   |
| 19.3, 19.4 Commercial auto liability                                      | 9,695,952                |                             | 9,695,952                     |  |   |   |  |   |
| 21. Auto physical damage  | 11,350,302               |                             | 11,350,302                    |  |   |   |  |   |
| 22. Aircraft (all perils)   |                          |                             |                               |  |   |   |  |   |
| 23. Fidelity  | (200)                    |                             | (200)                         |  |   |   |  |   |
| 24. Surety  | (1,200)                  |                             | (1,200)                       |  |   |   |  |   |
| 26. Burglary and theft  |                          |                             |                               |  |   |   |  |   |
| 27. Boiler and machinery  |                          |                             |                               |  |   |   |  |   |
| 28. Credit  |                          |                             |                               |  |   |   |  |   |
| 29. International   |                          |                             |                               |  |   |   |  |   |
| 30. Reinsurance- Nonproportional Assumed Property                         | X X X                    |                             |                               |  |   |   |  |   |
| 31. Reinsurance- Nonproportional Assumed Liability                        | X X X                    |                             |                               |  |   |   |  |   |
| 32. Reinsurance- Nonproportional Assumed Financial Lines                  | X X X                    |                             |                               |  |   |   |  |   |
| 33. Aggregate write-ins for other lines of business                       |                          |                             |                               |  |   |   |  |   |
| 34. TOTALS  | 87,673,214               | 422,003                     | 88,095,217                    |  |   |   |  |   |
| <b>DETAILS OF WRITE-INS</b>   |                          |                             |                               |  |   |   |  |   |
| 3301  |                          |                             |                               |  |   |   |  |   |
| 3302  |                          |                             |                               |  |   |   |  |   |
| 3303  |                          |                             |                               |  |   |   |  |   |
| 3398. Summary of remaining write-ins for Line 33 from overflow page       |                          |                             |                               |  |   |   |  |   |
| 3399. Totals (Line 3301 through Line 3303 plus Line 3398) (Line 33 above) |                          |                             |                               |  |   |   |  |   |

ANNUAL STATEMENT FOR THE YEAR 2007 OF THE AMERICAN FIRE AND CASUALTY COMPANY

**UNDERWRITING AND INVESTMENT EXHIBIT**

PART 2A - UNPAID LOSSES AND LOSS ADJUSTMENT EXPENSES

| Line of Business  | Reported Losses |                          |  |  | Incurred But Not Reported |                             |                           | 8<br>Net Losses Unpaid<br>(Columns 4 plus 5<br>plus 6 minus 7) | 9<br>Unpaid Loss<br>Adjustment<br>Expenses |
|---|-----------------|--------------------------|--|--|---------------------------|-----------------------------|---------------------------|--|--|
|   | 1<br>Direct     | 2<br>Reinsurance Assumed | 3<br>Deduct Reinsurance<br>Recoverable from<br>Authorized and<br>Unauthorized<br>Companies | 4<br>Net Losses Excluding<br>Incurred But<br>Not Reported<br>(Columns 1<br>plus 2 minus 3) | 5<br>Direct               | 6<br>Reinsurance<br>Assumed | 7<br>Reinsurance<br>Ceded |  |  |
| 1. Fire   | 5,041           | 216                      | 5,257  |  | 20,142                    |                             | 20,142                    |  |  |
| 2. Allied lines   | 8,000           | 280                      | 8,280  |  | 17,282                    |                             | 17,282                    |  |  |
| 3. Farmowners multiple peril  |                 |                          |  |  |                           |                             |                           |  |  |
| 4. Homeowners multiple peril  | 3,705,443       | 52,008                   | 3,757,451  |  | 2,424,602                 |                             | 2,424,602                 |  |  |
| 5. Commercial multiple peril  | 18,789,658      |                          | 18,789,658   |  | 32,891,365                |                             | 32,891,365                |  |  |
| 6. Mortgage guaranty  |                 |                          |  |  |                           |                             |                           |  |  |
| 8. Ocean marine   |                 |                          |  |  |                           |                             |                           |  |  |
| 9. Inland marine  | 5,500           |                          | 5,500  |  | 2,228                     |                             | 2,228                     |  |  |
| 10. Financial guaranty  |                 |                          |  |  |                           |                             |                           |  |  |
| 11.1 Medical malpractice - occurrence                                     |                 |                          |  |  |                           |                             |                           |  |  |
| 11.2 Medical malpractice - claims-made                                    |                 |                          |  |  |                           |                             |                           |  |  |
| 12. Earthquake  |                 |                          |  |  | 11,890                    |                             | 11,890                    |  |  |
| 13. Group accident and health   |                 |                          |  |  |                           |                             |                           | (a)  |  |
| 14. Credit accident and health (group and individual)                     |                 |                          |  |  |                           |                             |                           | (a)  |  |
| 15. Other accident and health   |                 |                          |  |  |                           |                             |                           |  |  |
| 16. Workers' compensation   | 56,402,141      | 5,300                    | 56,407,441   |  | 64,507,555                |                             | 64,507,555                |  |  |
| 17.1 Other liability - occurrence   | 6,644,679       | 1,806,451                | 8,451,130  |  | 10,437,764                | 7,000,000                   | 17,437,764                |  |  |
| 17.2 Other liability - claims-made  |                 |                          |  |  | 2                         |                             | 2                         |  |  |
| 18.1 Products liability - occurrence                                      | 1,693,014       |                          | 1,693,014  |  | 733,942                   |                             | 733,942                   |  |  |
| 18.2 Products liability - claims-made                                     |                 |                          |  |  |                           |                             |                           |  |  |
| 19.1, 19.2 Private passenger auto liability                               | 10,892,669      | 1                        | 10,892,670   |  | 5,715,034                 |                             | 5,715,034                 |  |  |
| 19.3, 19.4 Commercial auto liability                                      | 12,212,395      |                          | 12,212,395   |  | 14,017,904                |                             | 14,017,904                |  |  |
| 21. Auto physical damage  | 1,002,423       |                          | 1,002,423  |  | (541,154)                 |                             | (541,154)                 |  |  |
| 22. Aircraft (all perils)   |                 |                          |  |  |                           |                             |                           |  |  |
| 23. Fidelity  |                 |                          |  |  |                           |                             |                           |  |  |
| 24. Surety  | 100             |                          | 100  |  | 55,326                    |                             | 55,326                    |  |  |
| 26. Burglary and theft  |                 |                          |  |  |                           |                             |                           |  |  |
| 27. Boiler and machinery  |                 |                          |  |  |                           |                             |                           |  |  |
| 28. Credit  |                 |                          |  |  |                           |                             |                           |  |  |
| 29. International   |                 |                          |  |  |                           |                             |                           |  |  |
| 30. Reinsurance- Nonproportional Assumed Property                         | X X X           |                          |  |  | X X X                     |                             |                           |  |  |
| 31. Reinsurance- Nonproportional Assumed Liability                        | X X X           |                          |  |  | X X X                     |                             |                           |  |  |
| 32. Reinsurance- Nonproportional Assumed Financial Lines                  | X X X           |                          |  |  | X X X                     |                             |                           |  |  |
| 33. Aggregate write-ins for other lines of business                       |                 |                          |  |  |                           |                             |                           |  |  |
| 34. TOTALS  | 111,361,063     | 1,864,256                | 113,225,319  |  | 130,293,882               | 7,000,000                   | 137,293,882               |  |  |
| <b>DETAILS OF WRITE-INS</b>   |                 |                          |  |  |                           |                             |                           |  |  |
| 3301.   |                 |                          |  |  |                           |                             |                           |  |  |
| 3302.   |                 |                          |  |  |                           |                             |                           |  |  |
| 3303.   |                 |                          |  |  |                           |                             |                           |  |  |
| 3398. Summary of remaining write-ins for Line 33 from overflow page       |                 |                          |  |  |                           |                             |                           |  |  |
| 3399. Totals (Line 3301 through Line 3303 plus Line 3398) (Line 33 above) |                 |                          |  |  |                           |                             |                           |  |  |

(a) Including \$ . . . . . for present value of life indemnity claims.

**UNDERWRITING AND INVESTMENT EXHIBIT**

**PART 3 - EXPENSES**

|   | 1                        | 2                           | 3                   | 4          |
|---|--------------------------|-----------------------------|---------------------|------------|
|   | Loss Adjustment Expenses | Other Underwriting Expenses | Investment Expenses | Total      |
| 1. Claim adjustment services:   |                          |                             |                     |            |
| 1.1 Direct  | 9,990,752                |                             |                     | 9,990,752  |
| 1.2 Reinsurance assumed   |                          |                             |                     |            |
| 1.3 Reinsurance ceded   | 9,990,752                |                             |                     | 9,990,752  |
| 1.4 Net claim adjustment services (Line 1.1 plus Line 1.2 minus Line 1.3)   |                          |                             |                     |            |
| 2. Commission and brokerage:  |                          |                             |                     |            |
| 2.1 Direct excluding contingent   |                          | 24,108,753                  |                     | 24,108,753 |
| 2.2 Reinsurance assumed excluding contingent  |                          | (35)                        |                     | (35)       |
| 2.3 Reinsurance ceded excluding contingent  |                          | 24,108,718                  |                     | 24,108,718 |
| 2.4 Contingent - direct   |                          | 3,034,000                   |                     | 3,034,000  |
| 2.5 Contingent - reinsurance assumed  |                          |                             |                     |            |
| 2.6 Contingent - reinsurance ceded  |                          | 3,034,000                   |                     | 3,034,000  |
| 2.7 Policy and membership fees  |                          |                             |                     |            |
| 2.8 Net commission and brokerage (Line 2.1 plus Line 2.2 minus Line 2.3 plus Line 2.4 plus Line 2.5 minus Line 2.6 plus Line 2.7) |                          |                             |                     |            |
| 3. Allowances to manager and agents   |                          |                             |                     |            |
| 4. Advertising  |                          |                             |                     |            |
| 5. Boards, bureaus and associations   |                          |                             |                     |            |
| 6. Surveys and underwriting reports   |                          |                             |                     |            |
| 7. Audit of assureds' records   |                          |                             |                     |            |
| 8. Salary and related items:  |                          |                             |                     |            |
| 8.1 Salaries  |                          |                             |                     |            |
| 8.2 Payroll taxes   |                          |                             |                     |            |
| 9. Employee relations and welfare   |                          |                             |                     |            |
| 10. Insurance   |                          |                             |                     |            |
| 11. Directors' fees   |                          |                             |                     |            |
| 12. Travel and travel items   |                          |                             |                     |            |
| 13. Rent and rent items   |                          |                             |                     |            |
| 14. Equipment   |                          |                             |                     |            |
| 15. Cost or depreciation of EDP equipment and software  |                          |                             |                     |            |
| 16. Printing and stationery   |                          |                             |                     |            |
| 17. Postage, telephone and telegraph, exchange and express  |                          | 300                         |                     | 300        |
| 18. Legal and auditing  |                          |                             | 2,956               | 2,956      |
| 19. Totals (Line 3 through Line 18)   |                          | 300                         | 2,956               | 3,256      |
| 20. Taxes, licenses and fees:   |                          |                             |                     |            |
| 20.1 State and local insurance taxes deducting guaranty association credits of \$   |                          |                             |                     |            |
| 20.2 Insurance department licenses and fees   |                          |                             |                     |            |
| 20.3 Gross guaranty association assessments   |                          |                             |                     |            |
| 20.4 All other (excluding federal and foreign income and real estate)   |                          |                             |                     |            |
| 20.5 Total taxes, licenses and fees (Line 20.1 plus Line 20.2 plus Line 20.3 plus Line 20.4)                                      |                          |                             |                     |            |
| 21. Real estate expenses  |                          |                             |                     |            |
| 22. Real estate taxes   |                          |                             |                     |            |
| 23. Reimbursements by uninsured plans   |                          |                             |                     |            |
| 24. Aggregate write-ins for miscellaneous expenses  |                          |                             |                     |            |
| 25. Total expenses incurred   |                          | 300                         | 2,956               | (a) 3,256  |
| 26. Less unpaid expenses - current year   |                          |                             |                     |            |
| 27. Add unpaid expenses - prior year  |                          |                             |                     |            |
| 28. Amounts receivable relating to uninsured plans, prior year  |                          |                             |                     |            |
| 29. Amounts receivable relating to uninsured plans, current year  |                          |                             |                     |            |
| 30. TOTAL EXPENSES PAID (Line 25 minus Line 26 plus Line 27 minus Line 28 plus Line 29)   |                          | 300                         | 2,956               | 3,256      |
| <b>DETAILS OF WRITE-INS</b>   |                          |                             |                     |            |
| 2401.   |                          |                             |                     |            |
| 2402.   |                          |                             |                     |            |
| 2403.   |                          |                             |                     |            |
| 2498. Summary of remaining write-ins for Line 24 from overflow page   |                          |                             |                     |            |
| 2499. Totals (Line 2401 through Line 2403 plus Line 2498) (Line 24 above)   |                          |                             |                     |            |

(a) Includes management fees of \$ ..... to affiliates and \$ ..... to non-affiliates.

**EXHIBIT OF NET INVESTMENT INCOME**

|   | 1                        | 2   |
|---|--------------------------|---|
|   | Collected<br>During Year | Earned<br>During Year   |
| 1. U.S. Government bonds  | (a) 357,740              | 334,018   |
| 1.1 Bonds exempt from U.S. tax  | (a) 381,831              | 407,798   |
| 1.2 Other bonds (unaffiliated)  | (a) 930,761              | 970,587   |
| 1.3 Bonds of affiliates   | (a)                      |   |
| 2.1 Preferred stocks (unaffiliated)   | (b) 78,125               | 78,125  |
| 2.11 Preferred stocks of affiliates   | (b)                      |   |
| 2.2 Common stocks (unaffiliated)  |                          |   |
| 2.21 Common stocks of affiliates  |                          |   |
| 3. Mortgage loans   | (c)                      |   |
| 4. Real estate  | (d)                      |   |
| 5. Contract loans   |                          |   |
| 6. Cash, cash equivalents and short-term investments  | (e) 71,889               | 71,889  |
| 7. Derivative instruments   | (f)                      |   |
| 8. Other invested assets  |                          |   |
| 9. Aggregate write-ins for investment income  | 48,625                   | 48,625  |
| 10. Total gross investment income   | 1,868,971                | 1,911,042   |
| 11. Investment expenses   |                          | (g) 2,956   |
| 12. Investment taxes, licenses and fees, excluding federal income taxes   |                          | (g)   |
| 13. Interest expense  |                          | (h)   |
| 14. Depreciation on real estate and other invested assets   |                          | (i)   |
| 15. Aggregate write-ins for deductions from investment income   |                          |   |
| 16. Totals deductions (Line 11 through Line 15)   |                          | 2,956   |
| 17. Net investment income (Line 10 minus Line 16)   |                          | 1,908,086   |
| <b>DETAILS OF WRITE-INS</b>   |                          |   |
| 0901. Other Interest  | 48,625                   | 48,625  |
| 0902.   |                          |   |
| 0903.   |                          |   |
| 0998. Summary of remaining write-ins for Line 9 from overflow page  |                          |   |
| 0999. Totals (Line 0901 through Line 0903 plus Line 0998 ) (Line 9 above)   | 48,625                   | 48,625  |
| 1501.   |                          |   |
| 1502.   |                          |   |
| 1503.   |                          |   |
| 1598. Summary of remaining write-ins for Line 15 from overflow page   |                          |   |
| 1599. Totals (Line 1501 through Line 1503 plus Line 1598 ) (Line 15 above)  |                          |   |
| (a) Includes \$ 47,588 accrual of discount less \$ 172,370 amortization of premium and less \$ 16,501 paid for accrued interest on purchases. |                          | (f) Includes \$ accrual of discount less \$ amortization of premium.  |
| (b) Includes \$ accrual of discount less \$ amortization of premium and less \$ paid for accrued dividends on purchases.                      |                          | (g) Includes \$ investment expenses and \$ investment taxes, licenses and fees, excluding federal income taxes, attributable to segregated and Separate Accounts. |
| (c) Includes \$ accrual of discount less \$ amortization of premium and less \$ paid for accrued interest on purchases.                       |                          | (h) Includes \$ interest on surplus notes and \$ interest on capital notes.   |
| (d) Includes \$ for company's occupancy of its own buildings; and excludes \$ interest on encumbrances.                                       |                          | (i) Includes \$ depreciation on real estate and \$ depreciation on other invested assets.   |
| (e) Includes \$ accrual of discount less \$ amortization of premium and less \$ paid for accrued interest on purchases.                       |                          |   |

**EXHIBIT OF CAPITAL GAINS (LOSSES)**

|   | 1   | 2                             | 3   | 4   | 5   |
|---|---|-------------------------------|---|---|---|
|   | Realized Gain<br>(Loss) on Sales<br>or Maturity | Other Realized<br>Adjustments | Total Realized<br>Capital Gain<br>(Loss)<br>(Cols. 1 + 2) | Change in<br>Unrealized<br>Capital Gain<br>(Loss) | Change in<br>Unrealized<br>Foreign Exchange<br>Capital Gain<br>(Loss) |
| 1. U.S. Government bonds  |   |                               |   |   |   |
| 1.1 Bonds exempt from U.S. tax  | 710   |                               | 710   |   |   |
| 1.2 Other bonds (unaffiliated)  |   |                               |   |   |   |
| 1.3 Bonds of affiliates   |   |                               |   |   |   |
| 2.1 Preferred stocks (unaffiliated)                                       |   |                               |   | (18,750)  |   |
| 2.11 Preferred stocks of affiliates                                       |   |                               |   |   |   |
| 2.2 Common stocks (unaffiliated)  |   |                               |   |   |   |
| 2.21 Common stocks of affiliates  |   |                               |   |   |   |
| 3. Mortgage loans   |   |                               |   |   |   |
| 4. Real estate  |   |                               |   |   |   |
| 5. Contract loans   |   |                               |   |   |   |
| 6. Cash, cash equivalents and short-term investments                      |   |                               |   |   |   |
| 7. Derivative instruments   |   |                               |   |   |   |
| 8. Other invested assets  |   |                               |   |   |   |
| 9. Aggregate write-ins for capital gains (losses)                         |   |                               |   |   |   |
| 10. Total capital gains (losses)  | 710   |                               | 710   | (18,750)  |   |
| <b>DETAILS OF WRITE-INS</b>   |   |                               |   |   |   |
| 0901.   |   |                               |   |   |   |
| 0902.   |   |                               |   |   |   |
| 0903.   |   |                               |   |   |   |
| 0998. Summary of remaining write-ins for Line 9 from overflow page        |   |                               |   |   |   |
| 0999. Totals (Line 0901 through Line 0903 plus Line 0998 ) (Line 9 above) |   |                               |   |   |   |

**Page 13**

Exhibit 9, Analysis of Nonadmitted Assets and Related Items

**NONE**

## NOTES TO FINANCIAL STATEMENTS

### 1. Summary of Significant Accounting Policies

#### A. Accounting Practices

The financial statements of American Fire and Casualty Company (American Fire or the company) have been prepared on the basis of accounting practices prescribed or permitted by the Ohio Insurance Department.

The Ohio Insurance Department recognizes only statutory accounting practices prescribed or permitted by the State of Ohio for determining and reporting the financial condition and results of operations of an insurance company and for determining its solvency under Ohio Insurance Law. The National Association of Insurance Commissioners (NAIC) Accounting Practices and Procedures manual, version effective January 1, 2001, (NAIC SAP) has been adopted as a component of prescribed or permitted practices by the State of Ohio.

Certain prior year amounts have been reclassified to conform to the current year presentation.

Throughout this statement, line items may not add to totals due to rounding.

#### B. Use of Estimates in the Preparation of the Financial Statements

The preparation of financial statements in conformity with Statutory Accounting Principles requires management to make estimates and assumptions that affect the reported amounts of assets and liabilities. It also requires disclosure of contingent assets and liabilities at the date of the financial statements and the reported amounts of revenues and expenses during the reporting period. Actual results could differ from those estimates.

The insurance industry is subject to regulation that differs by state. A change in regulation in a given state may have a material adverse impact on American Fire.

#### C. Accounting Policies

Property and casualty insurance premiums are earned principally on a monthly pro rata basis over the term of the policy; the premiums applicable to the unexpired terms of the policies are included in the unearned premium reserve.

Acquisition costs incurred at policy issuance, such as commissions, brokerage fees, salaries and benefits and other underwriting expenses which vary directly with the acquisition of insurance contracts are charged to operations in the year in which they are incurred.

In addition, American Fire uses the following accounting policies:

- (1) Short-term investments  
Not applicable.
  - (2) Bonds are generally carried at amortized cost or prescribed NAIC values. Bond premium/discount is amortized/accreted using the effective interest method.
  - (3) Common stocks  
Not applicable.
  - (4) Preferred stocks  
Not applicable.
  - (5) Mortgage loans  
Not applicable.
  - (6) Loan-backed securities are stated at either amortized cost or the lower of amortized cost or fair market value. The retrospective adjustment method is used to value all loan-backed securities, unless the prospective method is warranted due to credit rating or impairment.
  - (7) Investments in subsidiaries  
Not applicable.
  - (8) Investments in joint ventures, partnerships and limited liability companies  
Not applicable.
  - (9) Derivatives  
Not applicable.
  - (10) American Fire anticipates investment income as a factor in the premium deficiency calculation, in accordance with SSAP No. 53, Property - Casualty Contracts - Premiums.
  - (11) Reserves for unpaid losses and loss adjustment expenses are based on undiscounted estimates of ultimate costs to investigate, defend and settle all claims, including provisions for development on known claims and unreported claims. Such estimates are derived from reasonable assumptions and the application of a variety of appropriate actuarial methodologies. Inherent uncertainty in the estimates implies the true value of the liability will not be known until all attendant claims have been settled. Estimates are reviewed quarterly and adjustments to prior estimates are reflected in current earnings.
- Reserves for asbestos-related and toxic waste cleanup claims cannot be estimated with traditional loss reserving techniques. In establishing liabilities for claims for asbestos-related illnesses and for toxic waste cleanup claims, management considers facts currently known and the current state of the law and coverage litigation. Given uncertainties involving possible expansion of coverage and liability by the courts and legislatures, tort reform, future inflationary trends and jury awards, estimates are subject to significant variability. Nevertheless, we employ methods of estimating these reserves that we believe produce reasonable results given the current information available.
- (12) American Fire has not modified its capitalization policy from the prior period.

### 2. Accounting Changes and Corrections of Errors

#### A. Accounting Changes Other than Codification and Correction of Errors

Not applicable.

### 3. Business Combinations and Goodwill

#### A. Statutory Purchase Method

Not applicable.

#### B. Statutory Merger

Not applicable.

## NOTES TO FINANCIAL STATEMENTS

- C. Impairment Loss  
Not applicable.
4. Discontinued Operations  
Not applicable.
5. Investments
- A. Mortgage Loans  
Not applicable.
- B. Troubled Debt Restructuring for Creditors  
Not applicable.
- C. Reverse Mortgages  
Not applicable.
- D. Loan-Backed Securities
- American Fire has elected to use historical cost for applying the retrospective adjustment method to securities.
  - Prepayment assumptions for single class and multi-class mortgage-backed/asset-backed securities were obtained from broker dealer survey values or internal estimates.
  - American Fire had no negative yield situations requiring a change from the retrospective to prospective method.
- E. Repurchase Agreements  
Not applicable.
- F. Real Estate  
Not applicable.
- G. Investment in Low-Income Housing Tax Credits  
Not applicable.
6. Joint Ventures, Partnerships and Limited Liability Companies
- A. Detail for Those Greater than 10% of Admitted Assets  
Not applicable.
- B. Writedowns for Impairments  
Not applicable.
7. Investment Income
- A. Due and accrued investment income was excluded from surplus on the following bases:  
American Fire nonadmits investment income due and accrued if amounts are over 90 days past due (180 days for mortgage loans or amounts on mortgage loans in default).
- B. Amounts Nonadmitted  
Not applicable.
8. Derivative Instruments  
Not applicable.
9. Income Taxes
- A. The components of the net deferred tax assets and liabilities recognized in the Company's Assets, Liabilities, Surplus and Other Funds are as follows:
- |                                     | December 31, 2007 | December 31, 2006 | Change   |
|-------------------------------------|-------------------|-------------------|----------|
| Total of gross deferred tax assets  | \$ 686,935        | \$ 678,956        | \$ 7,979 |
| Total of deferred tax liabilities   | (1,739,875)       | (1,751,326)       | 11,451   |
| Net deferred tax liability          | \$(1,052,940)     | \$(1,072,370)     | \$19,430 |
| Net deferred tax asset non admitted | -                 | -                 | -        |
| Net deferred tax liability          | \$(1,052,940)     | \$(1,072,370)     | \$19,430 |
- B. The Company does not have any deferred tax liabilities described in SSAP No. 10, Income Taxes, paragraph 6d.
- C. The provisions for incurred taxes on earnings for the years ended December 31 are:
- |                                   | 2007      | 2006        |
|-----------------------------------|-----------|-------------|
| Federal tax on operations         | \$490,623 | \$ 597,302  |
| Net operating loss benefit        | -         | -           |
| Foreign tax on operations         | -         | -           |
| Income tax incurred on operations | \$490,623 | \$ 597,302  |
| Tax on capital gains              | 51,495    | \$ 879,983  |
| Total income tax incurred         | \$542,118 | \$1,477,285 |

The Company's deferred tax assets and liabilities result primarily from basis differences on invested assets and unrealized gains.

## NOTES TO FINANCIAL STATEMENTS

The change in deferred income taxes is comprised of the following:

|   | 2007     |
|---|----------|
| Change in net deferred income tax (without unrealized gain or loss) | \$12,867 |
| Tax effect of unrealized (gains) losses                             | 6,563    |
| Total change in net deferred income tax                             | \$19,430 |

D. Effective tax rates differ from the current statutory rate of 35% principally due to the effects of tax-exempt interest, excludible dividend income, revisions to prior year estimates, and basis differences on invested assets.

E. The amount of Federal income taxes paid and available for recoupment in the event of future losses is \$573,334 from the current year and \$1,476,850 from the preceding year.

The Company had no net loss carryforward available to offset future net income subject to Federal income taxes.

F. The Company's Federal income tax return is consolidated with the following entities:

|   |  |
|---|--|
| Access Insurance Services, Co.              | Liberty Mutual Fire Insurance Company      |
| Ambco Capital Corporation                   | Liberty Mutual Group Inc.                  |
| America First Insurance Company             | Liberty Mutual Holding Company, Inc.       |
| America First Lloyds Insurance Company      | Liberty Mutual Insurance Company           |
| American Ambassador Casualty Company        | Liberty Mutual Managed Care, Inc.          |
| American Fire and Casualty Company*         | Liberty Mutual Personal Insurance Company  |
| Avomark Insurance Company*                  | Liberty Northwest Insurance Corporation    |
| Berkeley Holding Company Associates, Inc.   | Liberty Personal Insurance Company         |
| Berkeley Management Corporation             | Liberty RE (Bermuda) Limited               |
| Bridgefield Casualty Insurance Company      | Liberty Real Estate Corporation            |
| Bridgefield Employers Insurance Company     | Liberty Sponsored Insurance (Vermont) Inc. |
| Capitol Agency, Inc. (Arizona Corp)         | Liberty Surplus Insurance Corporation      |
| Capitol Agency, Inc. (Ohio corporation)     | Liberty-USA Corporation                    |
| Capitol Agency, Inc. (Tennessee Corp)       | LIH-Re of America Corporation              |
| Cascade Disability Management, Inc.         | LIH U.S. P&C Corporation                   |
| Colorado Casualty Insurance Company         | LIIA Insurance Agency, Inc.                |
| Companies Agency Insurance Services of CA   | LIU Specialty Insurance Agency, Inc.       |
| Companies Agency of Alabama, Inc.           | LLS Insurance Agency of Nevada, Inc.       |
| Companies Agency of Georgia, Inc.           | LM General Insurance Company               |
| Companies Agency of Kentucky, Inc.          | LM Insurance Corporation                   |
| Companies Agency of Massachusetts, Inc.     | LM Personal Insurance Company              |
| Companies Agency of Michigan, Inc.          | LM Property and Casualty Insurance Co.     |
| Companies Agency of New York, Inc.          | LMHC Massachusetts Holding, Inc.           |
| Companies Agency of Pennsylvania, Inc.      | LRE Properties, Inc.                       |
| Companies Agency of Phoenix, Inc.           | Mid-American Agency, Inc.                  |
| Consolidated Insurance Company              | Mid-American Fire and Casualty Company     |
| Copley Venture Capital, Inc.                | Missouri Agency, Inc.                      |
| Countrywide Services Corporation            | North Pacific Insurance Company            |
| Diversified Settlements, Inc.               | Ohio Casualty Corporation*                 |
| Employers Insurance Company of Wausau       | OCI Printing, Inc.*                        |
| Excelsior Insurance Company                 | OCASCO Budget, Inc.*                       |
| Florida State Agency, Inc.                  | Ohio Casualty Insurance Company*           |
| Globe American Casualty Company             | Ohio Casualty of New Jersey, Inc.*         |
| Golden Eagle Insurance Corporation          | Ohio Life Brokerage Service, Inc.*         |
| Gulf States AIF, Inc.                       | Ohio Security Insurance Company*           |
| Hawkeye-Security Insurance Company          | Oregon Automobile Insurance Company        |
| Helmsman Insurance Agency of Illinois, Inc. | Peerless Indemnity Insurance Company       |
| Helmsman Insurance Agency of Texas, Inc.    | Peerless Insurance Company                 |
| Heritage-Summit Healthcare of Florida, Inc. | San Diego Insurance Company                |
| Indiana Insurance Company                   | State Agency, Inc. (Indiana corporation)   |
| LEXCO Limited                               | State Agency, Inc. (Wisconsin Corp)        |
| Liberty Assignment Corporation              | St. James Insurance Company                |
| Liberty Energy Canada, Inc.*                | Summit Consulting, Inc.                    |
| Liberty Financial Services, Inc.            | Summit Consulting, Inc. of Louisiana       |
| Liberty Hospitality Group, Inc.             | Summit Holding Southeast, Inc.             |
| Liberty Insurance Company of America        | The First Liberty Insurance Corporation    |
| Liberty Insurance Corporation               | The Midwestern Indemnity Company           |
| Liberty Insurance Holdings, Inc.            | The National Corporation                   |
| Liberty Insurance Underwriters, Inc.        | The Netherlands Insurance Company          |
| Liberty Life Assurance Company of Boston    | Wausau Business Insurance Company          |
| Liberty Life Holdings, Inc.                 | Wausau General Insurance Company           |
| Liberty Lloyds of Texas Insurance Company   | Wausau Service Corporation                 |
| Liberty Management Services, Inc.           | Wausau Signature Agency, Inc.              |
| Liberty Mexico Holdings, Inc.               | Wausau Underwriters Insurance Company      |
|   | West American Insurance Company*           |

\*This Company joined the consolidated group in 2007 and its activity from the date it joined the group is included in the consolidated return.

The method of federal income tax allocation is subject to a written agreement. Allocation is based upon separate return calculations with credit applied for losses as appropriate. The Company has the enforceable right to recoup prior year payments in the event of future losses.



## NOTES TO FINANCIAL STATEMENTS

10. Information Concerning Parent, Subsidiaries and Affiliates
- A. Nature of Relationship
- American Fire is wholly owned by Ohio Casualty, an Ohio insurance company, which is wholly owned by the Ohio Casualty Corporation, an Ohio insurance holding company. Ohio Casualty Corporation is wholly owned by Liberty Mutual Insurance Company.
- B. Detail of Transactions Greater than 1/2% of Admitted Assets
- During 2007, American Fire did not have any transactions greater than ½% of admitted assets that were not completed during the ordinary course of business.
- C. Change in Terms of Intercompany Arrangements
- Not applicable for 2007. See Notes 10F and 25 for changes impacting 2008.
- D. Amounts Due to or from Related Parties
- At December 31, 2007 American Fire reported a payable to Ohio Casualty of \$223,351. At December 31, 2006, American Fire reported a receivable due from Ohio Casualty of \$22,590.
- E. Guarantees or contingencies for Related Parties
- Not applicable.
- F. Management, Service Contracts, Cost Sharing Arrangements
- American Fire is a party to an Administrative Services Agreement that provides that Ohio Casualty shall act as the employer for all employees. Reimbursement to Ohio Casualty for services shall be solely for actual costs and expenses which it incurs in providing such services.
- American Fire is party to a service agreement with Liberty. Under this agreement, Liberty may provide American Fire with office space, supplies, equipment, telephone and wire services, the use of computers and similar machines and services of personnel employed by Liberty. Services include but are not limited to the following: claims handling, credit and collections, sales policy production, underwriting, investment management and a variety of computer activities. Liberty is reimbursed for the costs of all services which it provides under these agreements.
- G. Nature of Relationships that Could Affect Operations
- All outstanding shares of American Fire are owned by Ohio Casualty.
- H. Amount Deducted for Investment in Upstream Company
- Not applicable.
- I. Detail of Investments in Affiliates Greater than 10% of Admitted Assets
- Not applicable.
- J. Writedown for Impairments of Investments in Subsidiary, Controlled or Affiliated Companies
- Not applicable.
- K. Investment in Foreign Insurance Subsidiary
- Not applicable.
- L. Investment in Downstream Noninsurance Holding Company
- Not applicable.
11. Debt
- A. Capital Notes
- Not applicable.
- B. All Other Debt
- Not applicable.
12. Retirement Plans, Deferred Compensation, and Other Postretirement Benefit Plans
- A. Defined Benefit Plans
- Not applicable - the Company has no employees.
- B. Defined Contribution Plans
- Not applicable - the Company has no employees.
- C. Multi-employer Plans
- Not applicable.
- D. Consolidated/Holding Company Plans
- Not applicable - the Company has no employees.
- E. Postemployment Benefits and Compensated Absences
- Not applicable.

## NOTES TO FINANCIAL STATEMENTS

### 13. Capital and Surplus, Dividend Restrictions and Quasi-Reorganizations

#### A. Outstanding Shares

American Fire has 2,000,000 shares of \$3 par value common stock authorized and 1,124,681 shares issued and outstanding. American Fire has no preferred stock authorized, issued or outstanding.

#### B. Dividend Rate of Preferred Stock

Not applicable.

#### C., D., and E. Dividend Restrictions

The maximum amount of dividends to shareholders which may be paid by American Fire without prior approval of the Ohio Insurance Commissioner cannot exceed in any one year the greater of ten percent of the surplus as regards to policyholders as of December 31, or the net income provided such dividend does not impair capital or capital stock. At December 31, 2007, approximately \$3,568,807 was available for payment of dividends in 2008 without prior approval of the Ohio Insurance Department. American Fire paid \$3,500,000 in dividends to Ohio Casualty during 2007. Dividends are not cumulative.

#### F. Mutual Surplus Advances

Not applicable.

#### G. Company Stock Held for Special Purposes

Not applicable.

#### H. Changes in Special Surplus Funds

Not applicable.

#### I. Changes in Unassigned Funds

The portion of unassigned funds (surplus) represented or reduced by unrealized gain or loss is zero.

#### J. Surplus Notes

Not applicable.

#### K. and L. Quasi Reorganizations

Not applicable.

#### M. Dividends Paid

Ordinary dividends in the amount of \$3,500,000 were paid to Ohio Casualty in June 2007.

### 14. Contingent Liabilities

#### A. Contingent Commitments

American Fire has purchased annuities from life insurers under which the claimants are payees. These annuities have been used to reduce unpaid losses by \$3,869,000 as of December 31, 2007. American Fire has a contingent liability of \$3,869,000 should the issuers of these annuities fail to perform under the terms of the annuities.

American Fire has no commitments or contingent commitments to affiliates or other entities. As indicated in Note 10E, American Fire has made no guarantees on behalf of affiliates.

#### B. Guaranty Fund and Other Assessments

American Fire is subject to guaranty fund and other assessments by the states in which it writes business. Guaranty fund assessments should be accrued at the time the company is notified of insolvencies. Other assessments should be accrued either at the time of assessments or in the case of premium based assessments, at the time the premiums were written, or, in the case of loss based assessments, at the time the losses are incurred.

In 2007 and 2006, as a result of the amendment to the intercompany pooling agreement, American Fire ceded its accrued liability for guaranty fund assessments and its related premium tax assets to Ohio Casualty.

#### C. Gain Contingencies

Not applicable.

#### D. Claims related ECO and Bad Faith Losses Paid during the reporting period

Not applicable.

#### E. All Other Contingencies

Lawsuits arise against the company in the normal course of business. Contingent liabilities arising from litigation, income taxes and other matters are not considered material in relation to the financial position of the company.

### 15. Leases

#### A. Lessee Leasing Arrangements

Not applicable.

#### B. Lessor Leasing Arrangements

Not applicable.

## NOTES TO FINANCIAL STATEMENTS

16. Information about Financial Instruments with Off-Balance Sheet Risk and Financial Instruments with Concentration of Credit Risk
- Not applicable.
17. Sale, Transfer and Servicing of Financial Assets and Extinguishments of Liabilities
- A. Transfer of Receivables Reported as Sales
- Not applicable.
- B. Transfers and Servicing of Financial Assets
- Not applicable.
- C. Wash Sales
- Not applicable.
18. Gain or Loss to the Insurer from Uninsured A & H Plans and the Uninsured Portion of Partially Insured Plans
- Not applicable.
19. Direct Premium Written/Produced by Managing General Agents/Third Party Administrators
- Not applicable.
20. Other Items
- A. Extraordinary Items
- Not applicable.
- B. Troubled Debt Restructuring for Debtors
- Not applicable.
- C. Other Disclosures
- Assets in the amount of \$24,112,498 and \$24,079,619 at December 31, 2007 and 2006, respectively, were on deposit with government authorities or trustees as required by law.
- D. Uncollectible Premiums Receivable
- Effective January 1, 2006, American Fire is a participant in a 100% reinsurance pooling agreement with Ohio Casualty. As a result, American Fire's premiums receivable due from policyholders, agents and ceding insurers was zero.
- E. Business Interruption Insurance Recoveries
- Not applicable.
- F. State Transferable Tax Credits
- Not applicable.
- G. Not applicable.
- H. Hybrid Securities
- Not Applicable.
- I. Subprime Mortgage Related Risk Exposure
- The Company, as part of a diversified investment strategy, has direct investments in residential and commercial mortgaged backed securities, asset backed securities and structured notes. The Company does not and has not ever owned direct investments in subprime mortgage loans or equity investments in subsidiary, controlled or affiliated entities with subprime related risk exposure and does not underwrite policies for Mortgage Guaranty or Financial Guaranty.
- (1) We have reviewed the Company's portfolio and identified no subprime mortgage related exposure. The criteria considered in our evaluation includes identifying the nature and quality of the underlying collateral from review of the prospectuses, borrowers with low FICO scores, unconventionally high loan-to-value ratios, low initial payments based on a fixed introductory rate that adjusts to a variable rate and borrowers with less than conventional documentation of their income and/or net assets. The identified investments, along with all other investments in the Company's portfolio, are reviewed for impairment and written down if necessary.
- (2) None
- (3) None
- (4) None
- J. Investment General Interrogatory #28.4
- SVO unit prices were used to determine fair value, if the prices were available. For other bonds, preferred stocks and common stocks, fair values were obtained from IDC and securities dealers, when available. For securities not actively traded, estimated fair values were determined by matrix pricing and modeling techniques. These estimates are based on the values of securities with comparable trading characteristics (e.g. interest rates, credit quality, average maturity).

## NOTES TO FINANCIAL STATEMENTS

## K. Property and Casualty General Interrogatories #6.2

The company evaluates its Probable Maximum Loss (PML) using a variety of methods depending on the line of business and nature of exposures. These methods represent a combination of internal and external actuarial loss development and computer modeling. The company used Risk Management Solution to model its primary exposures of earthquake, hurricane, tornado and hail in the personal and commercial property lines located across the country.

## 21. Events Subsequent

Not applicable.

## 22. Reinsurance

## A. Unsecured Reinsurance Recoverables

| FEIN       | NAIC Code | Name                     | Reinsurance Recoverable |
|------------|-----------|--------------------------|-------------------------|
| 13-2781282 | 25070     | Clearwater Insurance Co  | \$ 2,582,171            |
| 36-2114545 | 20443     | Continental Casualty Co  | \$ 3,370,157            |
| 48-0921045 | 39845     | Employers Reinsurance    | \$ 1,149,488            |
| 13-2997499 | 38776     | Folksamerica Reinsurance | \$ 2,980,470            |
| 22-2005057 | 26921     | Everest Reinsurance      | \$ 2,221,751            |
| 13-2673100 | 22039     | General Reinsurance Corp | \$25,446,886            |
| 13-3031176 | 38636     | Partner Reinsurance Co   | \$ 6,355,705            |
| 13-1675535 | 25364     | Swiss Reinsurance Corp   | \$ 6,015,572            |

## B. Reinsurance Recoverable in Dispute

Not applicable.

## C. Reinsurance Assumed and Ceded

1. The maximum amount of return commission which would have been due reinsurers if they or American Fire had cancelled all of the Company's reinsurance or if the Company or a receiver had cancelled all of American Fire's insurance assumed as of the end of the period covered by this annual statement with the return of the unearned premium reserve is as follows:

|                                      | ASSUMED<br>REINSURANCE    |                             | CEDED<br>REINSURANCE      |                             | NET                       |                             |
|--------------------------------------|---------------------------|-----------------------------|---------------------------|-----------------------------|---------------------------|-----------------------------|
|                                      | Premium<br>Reserve<br>(1) | Commission<br>Equity<br>(2) | Premium<br>Reserve<br>(3) | Commission<br>Equity<br>(4) | Premium<br>Reserve<br>(5) | Commission<br>Equity<br>(6) |
| (i) Affiliates                       | \$ -                      | \$ -                        | \$85,413,316              | \$ -                        | \$(85,413,316)            | \$ -                        |
| (ii) All Other                       | -                         | -                           | 965,678                   | 103,805                     | (965,678)                 | (103,805)                   |
| (iii) TOTAL                          | \$ -                      | \$ -                        | \$86,378,994              | \$103,805                   | \$(86,378,994)            | \$(103,805)                 |
| (iv) Direct Unearned Premium Reserve |                           | \$86,378,994                |                           |                             |                           |                             |

2. Certain agency agreements and ceded reinsurance contracts provide for additional or return commissions based on the actual loss experience of the produced or reinsured business. Amounts accrued at December 31, 2007 are as follows:

|  | Direct<br>(1) | REINSURANCE    |              | Net<br>(4) |
|--|---------------|----------------|--------------|------------|
|  |               | Assumed<br>(2) | Ceded<br>(3) |            |
| (i) Contingent Commission                  | \$3,607,000   | \$ -           | \$3,607,000  | \$ -       |
| (ii) Sliding Scale Adjustments             | -             | -              | -            | -          |
| (iii) Other Profit Commission Arrangements | -             | -              | -            | -          |
| (iv) TOTAL                                 | \$3,607,000   | \$ -           | \$3,607,000  | \$ -       |

All contracts of reinsurance covering losses that have occurred prior to the inception of the contract have been accounted for in conformity with the instructions contained in the NAIC Accounting Practices and Procedures Manual.

## D. Uncollectible Reinsurance

Not applicable.

## E. Commutation of Ceded Reinsurance

Not applicable.

## F. Retroactive Reinsurance

Not applicable.

## G. Reinsurance Accounted for as a Deposit

Not applicable.

## 23. Retrospectively Rated Contracts &amp; Contracts Subject to Redetermination

Not applicable.

## 24. Change in Incurred Losses and Loss Adjustment Expenses

Not applicable.

**NOTES TO FINANCIAL STATEMENTS**

25. Intercompany Pooling Arrangements

Pursuant to the approval of the appropriate state insurance departments, effective January 1, 2008, Ohio Casualty joined the Peerless Insurance Company (PIC) Amended and Restated Reinsurance Pooling Agreement, along with its subsidiaries Avomark, American Fire, Ohio Casualty of New Jersey, Ohio Security and West American and Ohio Casualty's prior reinsurance pooling agreement was terminated. Therefore, effective January 1, 2008, the PIC Amended and Restated Reinsurance Pooling Agreement consisted of the following affiliated companies:

| Company                                | NAIC Co # | Pooling % | Lines of Business    |
|--|-----------|-----------|----------------------|
| Lead Company:                          |           |           |                      |
| Peerless Insurance Company             | 24198     | 42.00%    | All Lines            |
| Affiliated Pool Companies:             |           |           |                      |
| Peerless Indemnity Ins Co              | 18333     | 5.00%     | All Lines            |
| Golden Eagle Insurance Co              | 10836     | 7.00%     | All Lines, except WC |
| Indiana Insurance Co                   | 22659     | 8.00%     | All Lines            |
| The Netherlands Ins Co                 | 24171     | 3.00%     | All Lines            |
| American Fire and Casualty Co          | 24066     | 1.00%     | All Lines            |
| Ohio Casualty Insurance Co             | 24074     | 34.00%    | All Lines            |
| Avomark Insurance Co                   | 10792     | 0.00%     | All Lines            |
| American Ambassador Casualty Co        | 10073     | 0.00%     | All Lines            |
| America First Insurance Co             | 12696     | 0.00%     | All Lines            |
| America First Lloyd's Ins Co           | 11526     | 0.00%     | All Lines            |
| Colorado Casualty Insurance Co         | 41785     | 0.00%     | All Lines            |
| Consolidated Insurance Co              | 22640     | 0.00%     | All Lines            |
| Excelsior Insurance Co                 | 11045     | 0.00%     | All Lines            |
| Globe American Casualty Co             | 11312     | 0.00%     | All Lines            |
| Hawkeye-Security Insurance Co          | 36919     | 0.00%     | All Lines            |
| Liberty Mutual Mid-Atlantic Ins Co     | 14486     | 0.00%     | All Lines            |
| Mid-America Fire & Casualty Co         | 23507     | 0.00%     | All Lines            |
| Montgomery Mutual Insurance Co         | 14613     | 0.00%     | All Lines            |
| The Midwestern Indemnity Ins Co        | 23515     | 0.00%     | All Lines            |
| National Insurance Association         | 27944     | 0.00%     | All Lines            |
| Ohio Casualty of New Jersey, Inc.      | 10937     | 0.00%     | All Lines            |
| Ohio Security Insurance Company        | 24082     | 0.00%     | All Lines            |
| West American Insurance Company        | 44393     | 0.00%     | All Lines            |
|  |           | 100.00%   |                      |
| 100% Quota Share Affiliated Companies: |           |           |                      |
| Liberty Northwest Insurance Co         | 41939     | 0.00%     | All Lines            |
| Bridgefield Casualty Insurance Co      | 10335     | 0.00%     | All Lines            |
| Bridgefield Employers Insurance Co     | 10701     | 0.00%     | All Lines            |
| North Pacific Insurance Company        | 23892     | 0.00%     | All Lines            |
| Oregon Automobile Insurance Company    | 23922     | 0.00%     | All Lines            |

Prior to January 1, 2008 and effective January 1, 2005, Ohio Casualty, the lead company of the pool, assumed and retained 100% of the pool's underwriting experience. Prior to January 1, 2008 and effective January 1, 2005, no retro-cessions to the member companies occurred.

Effective January 1, 2005, American Fire ceded 100% of the gross direct liabilities with respect to policies issued in the state of California less reinsurance ceded to other reinsurers to OCNJ.

Prior to January 1, 2005 and effective January 1, 1984 Ohio Casualty and its property and casualty insurance subsidiaries, American Fire, Ohio Security, and West American entered into a reinsurance pooling agreement. Under the terms of the Agreement all outstanding underwriting liabilities as of January 1, 1984 and all subsequent insurance transactions were pooled. As part of the withdrawal agreement with the State of California, all California loss reserves remain unpooled as a liability of American Fire.

Effective January 1, 1998 Avomark Insurance Company was added to the reinsurance pooling agreement. Effective November 11, 1998 OCNJ (an unpooled affiliate of Ohio Casualty Group) assumed the pool's New Jersey private passenger auto policies and reserves. The companies participated in the pooled results as follows:

| Company       | NAIC Company Code | Percentage Share of Pooled Business |
|---------------|-------------------|-------------------------------------|
| Ohio Casualty | 24074             | 46.75%                              |
| West American | 44393             | 46.75%                              |
| American Fire | 24066             | 5.00%                               |
| Ohio Security | 24082             | 1.00%                               |
| Avomark       | 10792             | 0.50%                               |

26. Structured Settlements

A. Reserves Released due to Purchase of Annuities

The company has purchased annuities from life insurers under which the claimants are payees (See Note 14A). These annuities have been used to reduce unpaid losses by \$3,869,000 as of December 31, 2007. The company has a contingent liability of \$3,869,000 should the issuers of these annuities fail to perform under the terms of the annuities.

B. Annuity Insurers with Balances due Greater than 1% of Policyholders' Surplus

| Life Insurance Company                | and Location  | Licensed in Company's State of Domicile | Statement Value of Annuities |
|---------------------------------------|---------------|---|------------------------------|
| Great Southern Life Insurance Company | of Dallas, TX | Yes                                     | \$1,771,186                  |

27. Health Care Receivables

Not applicable.

**NOTES TO FINANCIAL STATEMENTS**

---

28. Participating Policies  
Not applicable.
29. Premium Deficiency Reserves  
As of December 31, 2007, the Company had no liabilities related to premium deficiency reserves.
30. High Deductibles  
Not applicable.
31. Discounting of Liabilities for Unpaid Losses or Unpaid Loss Adjustment Expenses  
Not applicable.
32. Asbestos/Environmental Reserves  
(\$000 omitted)
- A. Asbestos Reserves  
Not applicable.
  - B. Ending Reserves for Asbestos Claims for Bulk and IBNR Losses and LAE included in A above:  
Not applicable.
  - C. Ending Reserves for Asbestos Claims for Loss Adjustment Expense included in A above (Case, Bulk and IBNR):  
Not applicable.
  - D. Environmental Reserves  
Not applicable.
  - E. Ending Reserves for Environmental Claims for Bulk and IBNR Losses and LAE included in D above:  
Not applicable.
  - F. Ending Reserves for Environmental Claims for Loss Adjustment Expenses included in D above (Case, Bulk and IBNR):  
Not applicable.
33. Subscriber Savings Accounts  
Not applicable.
34. Multiple Peril Crop Insurance  
Not applicable.

## SUMMARY INVESTMENT SCHEDULE

| Investment Categories   | Gross Investment Holdings |                 | Admitted Assets as Reported in the Annual Statement |                 |
|---|---------------------------|-----------------|---|-----------------|
|   | 1<br>Amount               | 2<br>Percentage | 3<br>Amount   | 4<br>Percentage |
| 1. Bonds:   |                           |                 |   |                 |
| 1.1 U.S. treasury securities  | 6,425,969                 | 18.051          | 6,425,969   | 18.051          |
| 1.2 U.S. government agency obligations (excluding mortgage-backed securities):  |                           |                 |   |                 |
| 1.21 Issued by U.S. government agencies   |                           |                 |   |                 |
| 1.22 Issued by U.S. government sponsored agencies   |                           |                 |   |                 |
| 1.3 Foreign government (including Canada, excluding mortgage-backed securities)   |                           |                 |   |                 |
| 1.4 Securities issued by states, territories, and possessions and political subdivisions in the U.S.:   |                           |                 |   |                 |
| 1.41 States, territories and possessions general obligations  | 1,049,938                 | 2.949           | 1,049,938   | 2.949           |
| 1.42 Political subdivisions of states, territories and possessions and political subdivisions general obligations                                 | 6,358,541                 | 17.861          | 6,358,541   | 17.861          |
| 1.43 Revenue and assessment obligations   | 2,843,304                 | 7.987           | 2,843,304   | 7.987           |
| 1.44 Industrial development and similar obligations   |                           |                 |   |                 |
| 1.5 Mortgage-backed securities (includes residential and commercial MBS):   |                           |                 |   |                 |
| 1.51 Pass-through securities:   |                           |                 |   |                 |
| 1.511 Issued or guaranteed by GNMA  |                           |                 |   |                 |
| 1.512 Issued or guaranteed by FNMA and FHLMC  |                           |                 |   |                 |
| 1.513 All other   |                           |                 |   |                 |
| 1.52 CMOs and REMICs:   |                           |                 |   |                 |
| 1.521 Issued or guaranteed by GNMA, FNMA, FHLMC or VA   |                           |                 |   |                 |
| 1.522 Issued by non-U.S. Government issuers and collateralized by mortgage-backed securities issued or guaranteed by agencies shown in Line 1.521 |                           |                 |   |                 |
| 1.523 All other   |                           |                 |   |                 |
| 2. Other debt and other fixed income securities (excluding short term):   |                           |                 |   |                 |
| 2.1 Unaffiliated domestic securities (includes credit tenant loans rated by the SVO)  | 15,169,813                | 42.612          | 15,169,813  | 42.612          |
| 2.2 Unaffiliated foreign securities   | 996,539                   | 2.799           | 996,539   | 2.799           |
| 2.3 Affiliated securities   |                           |                 |   |                 |
| 3. Equity interests:  |                           |                 |   |                 |
| 3.1 Investments in mutual funds   |                           |                 |   |                 |
| 3.2 Preferred stocks:   |                           |                 |   |                 |
| 3.21 Affiliated   |                           |                 |   |                 |
| 3.22 Unaffiliated   | 1,231,250                 | 3.459           | 1,231,250   | 3.459           |
| 3.3 Publicly traded equity securities (excluding preferred stocks):   |                           |                 |   |                 |
| 3.31 Affiliated   |                           |                 |   |                 |
| 3.32 Unaffiliated   |                           |                 |   |                 |
| 3.4 Other equity securities:  |                           |                 |   |                 |
| 3.41 Affiliated   |                           |                 |   |                 |
| 3.42 Unaffiliated   |                           |                 |   |                 |
| 3.5 Other equity interests including tangible personal property under lease:  |                           |                 |   |                 |
| 3.51 Affiliated   |                           |                 |   |                 |
| 3.52 Unaffiliated   |                           |                 |   |                 |
| 4. Mortgage loans:  |                           |                 |   |                 |
| 4.1 Construction and land development   |                           |                 |   |                 |
| 4.2 Agricultural  |                           |                 |   |                 |
| 4.3 Single family residential properties  |                           |                 |   |                 |
| 4.4 Multifamily residential properties  |                           |                 |   |                 |
| 4.5 Commercial loans  |                           |                 |   |                 |
| 4.6 Mezzanine real estate loans   |                           |                 |   |                 |
| 5. Real estate investments:   |                           |                 |   |                 |
| 5.1 Property occupied by company  |                           |                 |   |                 |
| 5.2 Property held for production of income (including \$ ..... of property acquired in satisfaction of debt)                                      |                           |                 |   |                 |
| 5.3 Property held for sale (including \$ ..... property acquired in satisfaction of debt)   |                           |                 |   |                 |
| 6. Contract loans   |                           |                 |   |                 |
| 7. Receivables for securities   |                           |                 |   |                 |
| 8. Cash, cash equivalents and short-term investments  | 1,524,542                 | 4.282           | 1,524,542   | 4.282           |
| 9. Other invested assets  |                           |                 |   |                 |
| 10. Total invested assets   | 35,599,896                | 100.000         | 35,599,896  | 100.000         |

**GENERAL INTERROGATORIES**  
**PART 1 - COMMON INTERROGATORIES**

GENERAL

- 1.1 Is the reporting entity a member of an Insurance Holding Company System consisting of two or more affiliated persons, one or more of which is an insurer? Yes (X) No ( )
- 1.2 If yes, did the reporting entity register and file with its domiciliary State Insurance Commissioner, Director or Superintendent, or with such regulatory official of the state of domicile of the principal insurer in the Holding Company System, a registration statement providing disclosure substantially similar to the standards adopted by the National Association of Insurance Commissioners (NAIC) in its Model Insurance Holding Company System Regulatory Act and model regulations pertaining thereto, or is the reporting entity subject to standards and disclosure requirements substantially similar to those required by such Act and regulations? Yes (X) No ( ) N/A ( )
- 1.3 State Regulating? Ohio
- 2.1 Has any change been made during the year of this statement in the charter, by-laws, articles of incorporation, or deed of settlement of the reporting entity? Yes (X) No ( )
- 2.2 If yes, date of change: 08/24/2007
- 3.1 State as of what date the latest financial examination of the reporting entity was made or is being made. 12/31/2005
- 3.2 State the as of date of the latest financial examination report became available from either the state of domicile or the reporting entity. This date should be the date of the examined balance sheet and not the date the report was completed or released. 10/05/2006
- 3.3 State as of what date the latest financial examination report became available to other states or the public from either the state of domicile or the reporting entity. This is the release date or completion date of the examination report and not the date of the examination (balance sheet date). 10/05/2006
- 3.4 By what department or departments?  
Ohio
- 4.1 During the period covered by this statement, did any agent, broker, sales representative, non-affiliated sales/service organization or any combination thereof under common control (other than salaried employees of the reporting entity) receive credit or commissions for or control a substantial part (more than 20 percent of any major line of business measured on direct premiums) of:
- 4.11 sales of new business? Yes ( ) No (X)  
4.12 renewals? Yes ( ) No (X)
- 4.2 During the period covered by this statement, did any sales/service organization owned in whole or in part by the reporting entity or an affiliate, receive credit or commissions for or control a substantial part (more than 20 percent of any major line of business measured on direct premiums) of:
- 4.21 sales of new business? Yes ( ) No (X)  
4.22 renewals? Yes ( ) No (X)
- 5.1 Has the reporting entity been a party to a merger or consolidation during the period covered by this statement? Yes (X) No ( )
- 5.2 If yes, provide name of the entity, NAIC Company Code, and state of domicile (use two letter state abbreviation) for any entity that has ceased to exist as a result of the merger or consolidation.

| 1<br>Name of Entity | 2<br>NAIC Company Code | 3<br>State of Domicile |
|---------------------|------------------------|------------------------|
| .....               | .....                  | .....                  |
| .....               | .....                  | .....                  |
| .....               | .....                  | .....                  |

- 6.1 Has the reporting entity had any Certificates of Authority, licenses or registrations (including corporate registration, if applicable) suspended or revoked by any governmental entity during the reporting period? Yes ( ) No (X)
- 6.2 If yes, give full information:  
.....  
.....
- 7.1 Does any foreign (non-United States) person or entity directly or indirectly control 10% or more of the reporting entity? Yes ( ) No (X)
- 7.2 If yes, ..... %
- 7.21 State the percentage of foreign control;
- 7.22 State the nationality(s) of the foreign person(s) or entity(s); or if the entity is a mutual or reciprocal, the nationality of its manager or attorney-in-fact and identify the type of entity(s) (e.g. individual, corporation, government, manager or attorney-in-fact).

| 1<br>Nationality | 2<br>Type of Entity |
|------------------|---------------------|
| .....            | .....               |
| .....            | .....               |
| .....            | .....               |



**GENERAL INTERROGATORIES**

- 8.1 Is the company a subsidiary of a bank holding company regulated by the Federal Reserve Board? Yes ( ) No (X)
- 8.2 If response to 8.1 is yes, please identify the name of the bank holding company.  
 .....  
 .....
- 8.3 Is the company affiliated with one or more banks, thrifts or securities firms? Yes ( ) No (X)
- 8.4 If response to 8.3 is yes, please provide the names and location (city and state of the main office) of any affiliates regulated by a federal financial regulatory services agency [i. e. the Federal Reserve Board (FRB), the Office of the Comptroller of the Currency (OCC), the Office of Thrift Supervision (OTS), the Federal Deposit Insurance Corporation (FDIC) and the Securities Exchange Commission (SEC)] and identify the affiliate's primary federal regulator.

| 1<br>Affiliate Name | 2<br>Location (City, State) | 3<br>FRB | 4<br>OCC | 5<br>OTS | 6<br>FDIC | 7<br>SEC |
|---------------------|-----------------------------|----------|----------|----------|-----------|----------|
| .....               | .....                       | .....    | .....    | .....    | .....     | .....    |
| .....               | .....                       | .....    | .....    | .....    | .....     | .....    |
| .....               | .....                       | .....    | .....    | .....    | .....     | .....    |

9. What is the name and address of the independent certified public accountant or accounting firm retained to conduct the annual audit?  
 Ernst & Young LLP 1900 Scripps Center  
 312 Walnut Street Cincinnati, OH 45202
10. What is the name, address and affiliation (officer/employee of the reporting entity or actuary/consultant associated with an actuarial consulting firm) of the individual providing the statement of actuarial opinion/certification?  
 Charles H Boucek, FCAS, MAAA 233 South Wacker Drive  
 Ernst & Young LLP Chicago, IL 60606
- 11.1 Does the reporting entity own any securities of a real estate holding company or otherwise hold real estate indirectly? Yes ( ) No (X)
- 11.11 Name of real estate holding company  
 .....  
 .....
- 11.12 Number of parcels involved .....
- 11.13 Total book/adjusted carrying value \$ .....
- 11.2 If yes, provide explanation  
 .....  
 .....
12. FOR UNITED STATES BRANCHES OF ALIEN REPORTING ENTITIES ONLY:
- 12.1 What changes have been made during the year in the United States manager or the United States trustees of the reporting entity?  
 .....  
 .....
- 12.2 Does this statement contain all business transacted for the reporting entity through its United States branch on risks wherever located? Yes ( ) No ( )
- 12.3 Have there been any changes made to any of the trust indentures during the year? Yes ( ) No ( )
- 12.4 If answer to (12.3) is yes, has the domiciliary or entry state approved the changes? Yes ( ) No ( ) N/A (X)
- 13.1 Are the senior officers (principal executive officer, principal financial officer, principal accounting officer or controller, or persons performing similar functions) of the reporting entity subject to a code of ethics, which includes the following standards?  
 (a) Honest and ethical conduct, including the ethical handling of actual or apparent conflicts of interest between personal and professional relationships;  
 (b) Full, fair, accurate, timely and understandable disclosure in the periodic reports required to be filed by the reporting entity;  
 (c) Compliance with applicable governmental laws, rules and regulations;  
 (d) The prompt internal reporting of violations to an appropriate person or persons identified in the code; and  
 (e) Accountability for adherence to the code. Yes (X) No ( )
- 13.11 If the response to 13.1 is No, please explain:  
 .....  
 .....
- 13.2 Has the code of ethics for senior managers been amended? Yes (X) No ( )
- 13.21 If the response to 13.2 is Yes, provide information related to amendment(s).  
 The Liberty Mutual Code of Ethics has been adopted.  
 .....
- 13.3 Have any provisions of the code of ethics been waived for any of the specified officers? Yes ( ) No (X)
- 13.31 If the response to 13.3 is Yes, provide the nature of any waiver(s).  
 .....  
 .....

**BOARD OF DIRECTORS**

14. Is the purchase or sale of all investments of the reporting entity passed upon either by the Board of Directors or a subordinate committee thereof? Yes (X) No ( )
15. Does the reporting entity keep a complete permanent record of the proceedings of its Board of Directors and all subordinate committees thereof? Yes (X) No ( )
16. Has the reporting entity an established procedure for disclosure to its board of directors or trustees of any material interest or affiliation on the part of any of its officers, directors, trustees, or responsible employees that is in conflict or is likely to conflict with the official duties of such person? Yes (X) No ( )

**GENERAL INTERROGATORIES**

**FINANCIAL**

17. Has this statement been prepared using a basis of accounting other than Statutory Accounting Principles (e.g., Generally Accepted Accounting Principles)? Yes ( ) No (X)
- 18.1 Total amount loaned during the year (inclusive of Separate Accounts, exclusive of policy loans):
- |  |   |          |
|--|---|----------|
|  | 18.11 To directors or other officers              | \$ ..... |
|  | 18.12 To stockholders not officers                | \$ ..... |
|  | 18.13 Trustees, supreme or grand (Fraternal only) | \$ ..... |
- 18.2 Total amount of loans outstanding at end of year (inclusive of Separate Accounts, exclusive of policy loans):
- |  |   |          |
|--|---|----------|
|  | 18.21 To directors or other officers              | \$ ..... |
|  | 18.22 To stockholders not officers                | \$ ..... |
|  | 18.23 Trustees, supreme or grand (Fraternal only) | \$ ..... |
- 19.1 Were any assets reported in this statement subject to a contractual obligation to transfer to another party without the liability for such obligation being reported in the statement? Yes ( ) No (X)
- 19.2 If yes, state the amount thereof at December 31 of the current year:
- |  |                            |          |
|--|----------------------------|----------|
|  | 19.21 Rented from others   | \$ ..... |
|  | 19.22 Borrowed from others | \$ ..... |
|  | 19.23 Leased from others   | \$ ..... |
|  | 19.24 Other                | \$ ..... |
- 20.1 Does this statement include payments for assessments as described in the Annual Statement Instructions other than guaranty fund or guaranty association assessments? Yes ( ) No (X)
- 20.2 If answer is yes:
- |  |  |          |
|--|--|----------|
|  | 20.21 Amount paid as losses or risk adjustment | \$ ..... |
|  | 20.22 Amount paid as expenses                  | \$ ..... |
|  | 20.23 Other amounts paid                       | \$ ..... |
- 21.1 Does the reporting entity report any amounts due from parent, subsidiaries or affiliates on Page 2 of this statement? Yes ( ) No (X)
- 21.2 If yes, indicate any amounts receivable from parent included in the Page 2 amount: \$ .....

**INVESTMENT**

- 22.1 Were all the stocks, bonds and other securities owned December 31 of current year, over which the reporting entity has exclusive control, in the actual possession of the reporting entity on said date? Yes (X) No ( )
- 22.2 If no, give full and complete information relating thereto:  
 .....  
 .....
- 23.1 Were any of the stocks, bonds or other assets of the reporting entity owned at December 31 of the current year not exclusively under the control of the reporting entity, or has the reporting entity sold or transferred any assets subject to a put option contract that is currently in force? (Exclude securities subject to Interrogatory 19.1) Yes (X) No ( )
- 23.2 If yes, state the amount thereof at December 31 of the current year:
- |  |  |                     |
|--|--|---------------------|
|  | 23.21 Loaned to others                                 | \$ .....            |
|  | 23.22 Subject to repurchase agreements                 | \$ .....            |
|  | 23.23 Subject to reverse repurchase agreements         | \$ .....            |
|  | 23.24 Subject to dollar repurchase agreements          | \$ .....            |
|  | 23.25 Subject to reverse dollar repurchase agreements  | \$ .....            |
|  | 23.26 Pledged as collateral                            | \$ .....            |
|  | 23.27 Placed under option agreements                   | \$ .....            |
|  | 23.28 Letter stock or securities restricted as to sale | \$ .....            |
|  | 23.29 On deposit with state or other regulatory body   | \$ ..... 24,112,498 |
|  | 23.291 Other   | \$ .....            |

23.3 For category (23.28) provide the following:

| 1<br>Nature of Restriction | 2<br>Description | 3<br>Amount |
|----------------------------|------------------|-------------|
| .....                      | .....            | .....       |
| .....                      | .....            | .....       |

- 24.1 Does the reporting entity have any hedging transactions reported on Schedule DB? Yes ( ) No (X)
- 24.2 If yes, has a comprehensive description of the hedging program been made available to the domiciliary state? If no, attach a description with this statement. Yes ( ) No ( ) N/A (X)
- 25.1 Were any preferred stocks or bonds owned as of December 31 of the current year mandatorily convertible into equity, or, at the option of the issuer, convertible into equity? Yes ( ) No (X)
- 25.2 If yes, state the amount thereof at December 31 of the current year. \$ .....

**GENERAL INTERROGATORIES**

INVESTMENT

26. Excluding items in Schedule E, real estate, mortgage loans and investments held physically in the reporting entity's offices, vaults or safety deposit boxes, were all stocks, bonds and other securities, owned throughout the current year held pursuant to a custodial agreement with a qualified bank or trust company in accordance with Section 3, III Conducting Examinations, G - Custodial or Safekeeping Agreements of the NAIC Financial Condition Examiners Handbook? Yes (X) No ( )

26.01 For agreements that comply with the requirements of the NAIC Financial Condition Examiners Handbook, complete the following:

| 1<br>Name of Custodian(s) | 2<br>Custodian's Address            |
|---------------------------|-------------------------------------|
| J P Morgan Chase .....    | 4 New York Plaza NY, NY 10004 ..... |
| .....                     | .....                               |
| .....                     | .....                               |

26.02 For all agreements that do not comply with the requirements of the NAIC Financial Condition Examiners Handbook, provide the name, location and a complete explanation:

| 1<br>Name(s) | 2<br>Location(s) | 3<br>Complete Explanation(s) |
|--------------|------------------|------------------------------|
| .....        | .....            | .....                        |
| .....        | .....            | .....                        |
| .....        | .....            | .....                        |

26.03 Have there been any changes, including name changes, in the custodian(s) identified in 26.01 during the current year? Yes ( ) No (X)

26.04 If yes, give full and complete information relating thereto:

| 1<br>Old Custodian | 2<br>New Custodian | 3<br>Date of Change | 4<br>Reason |
|--------------------|--------------------|---------------------|-------------|
| .....              | .....              | .....               | .....       |
| .....              | .....              | .....               | .....       |
| .....              | .....              | .....               | .....       |

26.05 Identify all investment advisors, brokers/dealers or individuals acting on behalf of broker/dealers that have access to the investment accounts, handle securities and have authority to make investments on behalf of the reporting entity:

| 1<br>Central Registration Depository Number(s) | 2<br>Name | 3<br>Address |
|--|-----------|--------------|
| .....  | .....     | .....        |
| .....  | .....     | .....        |
| .....  | .....     | .....        |

27.1 Does the reporting entity have any diversified mutual funds reported in Schedule D, Part 2 (diversified according to the Securities and Exchange Commission (SEC) in the Investment Company Act of 1940 [Section 5 (b) (1)])? Yes ( ) No (X)

27.2 If yes, complete the following schedule:

| 1<br>CUSIP#                           | 2<br>Name of Mutual Fund | 3<br>Book/Adjusted Carrying Value |
|---------------------------------------|--------------------------|-----------------------------------|
| .....                                 | .....                    | .....                             |
| .....                                 | .....                    | .....                             |
| .....                                 | .....                    | .....                             |
| Line 27.2998 from Overflow page ..... | .....                    | .....                             |
| Line 27.2999 TOTAL (9999999) .....    | .....                    | .....                             |

27.3 For each mutual fund listed in the table above, complete the following schedule:

| 1<br>Name of Mutual Fund (from above table) | 2<br>Name of Significant Holding of the Mutual Fund | 3<br>Amount of Mutual Fund's Book/Adjusted Carrying Value Attributable to the Holding | 4<br>Date of Valuation |
|---|---|---|------------------------|
| .....                                       | .....   | .....   | .....                  |
| .....                                       | .....   | .....   | .....                  |
| .....                                       | .....   | .....   | .....                  |

**GENERAL INTERROGATORIES**

28. Provide the following information for all short-term and long-term bonds and all preferred stocks. Do not substitute amortized value of statement value for fair value.

|                             | 1<br>Statement (Admitted)<br>Value | 2<br>Fair Value     | 3<br>Excess of Statement<br>over Fair Value (-),<br>or Fair Value<br>over Statement (+) |
|-----------------------------|------------------------------------|---------------------|---|
| 28.1 Bonds .....            | \$ ..... 32,844,105                | \$ ..... 33,600,500 | \$ ..... 756,395  |
| 28.2 Preferred stocks ..... | \$ ..... 1,231,250                 | \$ ..... 1,231,250  | \$ .....  |
| 28.3 Totals .....           | \$ ..... 34,075,355                | \$ ..... 34,831,750 | \$ ..... 756,395  |

28.4 Describe the sources or methods utilized in determining the fair values:  
See Notes to Financial Statements, Note 20J, Other Items

29.1 Have all the filing requirements of the Purposes and Procedures manual of the NAIC Securities Valuation Office been followed? Yes (X) No ( )

29.2 If no, list exceptions:

**OTHER**

30.1 Amount of payments to Trade Associations, service organizations and statistical or Rating Bureaus, if any? \$ ..... 231,891

30.2 List the name of the organization and the amount paid if any such payment represented 25% or more of the total payments to trade associations, service organizations and statistical or rating bureaus during the period covered by this statement.

| 1<br>Name                       | 2<br>Amount Paid |
|---------------------------------|------------------|
| Insurance Services Office ..... | \$ ..... 137,328 |
| .....                           | \$ .....         |
| .....                           | \$ .....         |
| .....                           | \$ .....         |

31.1 Amount of payments for legal expenses, if any? \$ .....

31.2 List the name of the firm and the amount paid if any such payment represented 25% or more of the total payments for legal expenses during the period covered by this statement.

| 1<br>Name | 2<br>Amount Paid |
|-----------|------------------|
| .....     | \$ .....         |
| .....     | \$ .....         |
| .....     | \$ .....         |
| .....     | \$ .....         |

32.1 Amount of payments for expenditures in connection with matters before legislative bodies, officers or departments of government, if any? \$ .....

32.2 List the name of the firm and the amount paid if any such payment represented 25% or more of the total payment expenditures in connection with matters before legislative bodies, officers or departments of government during the period covered by this statement.

| 1<br>Name | 2<br>Amount Paid |
|-----------|------------------|
| .....     | \$ .....         |
| .....     | \$ .....         |
| .....     | \$ .....         |
| .....     | \$ .....         |

**GENERAL INTERROGATORIES**  
**PART 2 - PROPERTY AND CASUALTY INTERROGATORIES**

1.1 Does the reporting entity have any direct Medicare Supplement Insurance in force? Yes ( ) No (X)

1.2 If yes, indicate premium earned on U. S. business only. \$ .....

1.3 What portion of Item (1.2) is not reported on the Medicare Supplement Insurance Experience Exhibit? \$ .....

1.31 Reason for excluding:  
 .....  
 .....

1.4 Indicate amount of earned premium attributable to Canadian and/or Other Alien not included in Line (1.2) above. \$ .....

1.5 Indicate total incurred claims on all Medicare Supplement insurance. \$ .....

1.6 Individual policies:

Most current three years:

1.61 Total premium earned \$ .....

1.62 Total incurred claims \$ .....

1.63 Number of covered lives .....

All years prior to most current three years:

1.64 Total premium earned \$ .....

1.65 Total incurred claims \$ .....

1.66 Number of covered lives .....

1.7 Group policies:

Most current three years:

1.71 Total premium earned \$ .....

1.72 Total incurred claims \$ .....

1.73 Number of covered lives .....

All years prior to most current three years:

1.74 Total premium earned \$ .....

1.75 Total incurred claims \$ .....

1.76 Number of covered lives .....

2. Health Test:

|                                       | 1<br>Current Year | 2<br>Prior Year |
|---------------------------------------|-------------------|-----------------|
| 2.1 Premium Numerator                 | \$ .....          | \$ .....        |
| 2.2 Premium Denominator               | \$ .....          | \$ .....        |
| 2.3 Premium Ratio (Line 2.1/Line 2.2) | .....             | .....           |
| 2.4 Reserve Numerator                 | \$ .....          | \$ .....        |
| 2.5 Reserve Denominator               | \$ .....          | \$ .....        |
| 2.6 Reserve Ratio (Line 2.4/Line 2.5) | .....             | .....           |

3.1 Does the reporting entity issue both participating and non-participating policies? Yes ( ) No (X)

3.2 If yes, state the amount of calendar year premiums written on:

3.21 Participating policies \$ .....

3.22 Non-participating policies \$ .....

4. For Mutual reporting entities and Reciprocal Exchange only:

4.1 Does the reporting entity issue assessable policies? Yes ( ) No ( )

4.2 Does the reporting entity issue non-assessable policies? Yes ( ) No ( )

4.3 If assessable policies are issued, what is the extent of the contingent liability of the policyholders? ..... %

4.4 Total amount of assessments paid or ordered to be paid during the year on deposit notes or contingent premiums. \$ .....

5. For Reciprocal Exchanges only:

5.1 Does the exchange appoint local agents? Yes ( ) No ( )

5.2 If yes, is the commission paid:

5.21 Out of Attorney's-in-fact compensation Yes ( ) No ( ) N/A (X)

5.22 As a direct expense of the exchange Yes ( ) No ( ) N/A (X)

5.3 What expenses of the Exchange are not paid out of the compensation of the Attorney-in-fact?  
 .....  
 .....

5.4 Has any Attorney-in-fact compensation, contingent on fulfillment of certain conditions, been deferred? Yes ( ) No ( )

5.5 If yes, give full information.  
 .....  
 .....

**GENERAL INTERROGATORIES**  
**PART 2 - PROPERTY AND CASUALTY INTERROGATORIES**

- 6.1 What provision has this reporting entity made to protect itself from an excessive loss in the event of a catastrophe under a workers' compensation contract issued without limit of loss?  
 Casualty reinsurance covers \$4M excess \$2M each loss.  
 Workers' Comp cat reinsurance covers \$46M excess \$2M each loss.
- 6.2 Describe the method used to estimate this reporting entity's probable maximum insurance loss, and identify the type of insured exposures comprising that probable maximum loss, the locations of concentrations of those exposures and the external resources (such as consulting firms or computer software models), if any, used in the estimation process:  
 See Notes to Financial Statements, Note 20K, Other Items
- 6.3 What provision has this reporting entity made (such as a catastrophic reinsurance program) to protect itself from an excessive loss arising from the types and concentrations of insured exposures comprising its probable maximum property insurance loss?  
 Cat Reins covers 100M x 25M (per occurrence)
- 6.4 Does the reporting entity carry catastrophe reinsurance protection for at least one reinstatement, in an amount sufficient to cover its estimated probable maximum loss attributable to a single loss event or occurrence? Yes (X) No ( )
- 6.5 If no, describe any arrangements or mechanisms employed by the reporting entity to supplement its catastrophe reinsurance program or to hedge its exposure to uninsured catastrophic loss.  
 .....
- 7.1 Has the reporting entity reinsured any risk with any other entity under a quota share reinsurance contract that includes a provision that would limit the reinsurer's losses below the stated quota share percentage (e.g., a deductible, a loss ratio corridor, a loss cap, an aggregate limit or any similar provisions)? Yes ( ) No (X)
- 7.2 If yes, indicate the number of reinsurance contracts containing such provisions. ....
- 7.3 If yes, does the amount of reinsurance credit taken reflect the reduction in quota share coverage caused by any applicable limiting provision(s)? Yes ( ) No (X)
- 8.1 Has this reporting entity reinsured any risk with any other entity and agreed to release such entity from liability, in whole or in part, from any loss that may occur on this risk, or portion thereof, reinsured? Yes ( ) No (X)
- 8.2 If yes, give full information.  
 .....
- 9.1 Has the reporting entity ceded any risk under any reinsurance contract (or under multiple contracts with the same reinsurer or its affiliates) for which during the period covered by the statement: (i) it recorded a positive or negative underwriting result greater than 5% of prior year-end surplus as regards policyholders or it reported calendar year written premium ceded or year-end loss and loss expense reserves ceded greater than 5% of prior year-end surplus as regards policyholders; (ii) it accounted for that contract as reinsurance and not as a deposit; and (iii) the contract(s) contain one or more of the following features or other features that would have similar results:  
 (a) A contract term longer than two years and the contract is noncancellable by the reporting entity during the contract term;  
 (b) A limited or conditional cancellation provision under which cancellation triggers an obligation by the reporting entity, or an affiliate of the reporting entity, to enter into a new reinsurance contract with the reinsurer, or an affiliate of the reinsurer;  
 (c) Aggregate stop loss reinsurance coverage;  
 (d) A unilateral right by either party (or both parties) to commute the reinsurance contract, whether conditional or not, except for such provisions which are only triggered by a decline in the credit status of the other party;  
 (e) A provision permitting reporting of losses, or payment of losses, less frequently than on a quarterly basis (unless there is no activity during the period); or  
 (f) Payment schedule, accumulating retentions from multiple years or any features inherently designed to delay timing of the reimbursement to the ceding entity. Yes ( ) No (X)
- 9.2 Has the reporting entity during the period covered by the statement ceded any risk under any reinsurance contract (or under multiple contracts with the same reinsurer or its affiliates), for which, during the period covered by the statement, it recorded a positive or negative underwriting result greater than 5% of the prior year-end surplus as regards policyholders or it reported calendar year written premium ceded or year-end loss and loss expense reserves ceded greater than 5% of prior year-end surplus as regards policyholders; excluding cessions to approved pooling arrangements or to captive insurance companies that are directly or indirectly controlling, controlled by, or under common control with (i) one or more unaffiliated policyholders of the reporting entity, or (ii) an association of which one or more unaffiliated policyholders of the reporting entity is a member where:  
 (a) The written premium ceded to the reinsurer by the reporting entity or its affiliates represents fifty percent (50%) or more of the entire direct and assumed premium written by the reinsurer based on its most recently available financial statement; or  
 (b) Twenty-five percent (25%) or more of the written premium ceded to the reinsurer has been retroceded back to the reporting entity or its affiliates in a separate reinsurance contract. Yes ( ) No (X)
- 9.3 If yes to 9.1 or 9.2, please provide the following information in the Reinsurance Summary Supplemental Filing for General Interrogatory 9:  
 (a) The aggregate financial statement impact gross of all such ceded reinsurance contracts on the balance sheet and statement of income;  
 (b) A summary of the reinsurance contract terms and indicate whether it applies to the contracts meeting the criteria in 9.1 or 9.2; and  
 (c) A brief discussion of management's principle objectives in entering into the reinsurance contract including the economic purpose to be achieved.
- 9.4 Except for transactions meeting the requirements of paragraph 31 of SSAP No. 62, Property and Casualty Reinsurance, has the reporting entity ceded any risk under any reinsurance contract (or multiple contracts with the same reinsurer or its affiliates) during the period covered by the financial statement, and either:  
 (a) Accounted for that contract as reinsurance (either prospective or retroactive) under statutory accounting principles ("SAP") and as a deposit under generally accepted accounting principles ("GAAP"); or  
 (b) Accounted for that contract as reinsurance under GAAP and as a deposit under SAP? Yes ( ) No (X)
- 9.5 If yes to 9.4, explain in the Reinsurance Summary Supplemental Filing for General Interrogatory 9 (Section D) why the contract(s) is treated differently for GAAP and SAP.
- 9.6 The reporting entity is exempt from the Reinsurance Attestation Supplement under one or more of the following criteria:  
 (a) The entity does not utilize reinsurance; or, Yes ( ) No (X)  
 (b) The entity only engages in a 100% quota share contract with an affiliate and the affiliated or lead company has filed an attestation supplement; or, Yes ( ) No (X)  
 (c) The entity has no external cessions and only participates in an intercompany pool and the affiliated or lead company has filed an attestation supplement. Yes ( ) No (X)

**GENERAL INTERROGATORIES**  
**PART 2 - PROPERTY AND CASUALTY INTERROGATORIES**

10. If the reporting entity has assumed risks from another entity, there should be charged on account of such reinsurances a reserve equal to that which the original reporting entity would have been required to charge had it retained the risks. Has this been done? Yes (X) No ( ) N/A ( )
- 11.1 Has this reporting entity guaranteed policies issued by any other entity and now in force? Yes ( ) No (X)
- 11.2 If yes, give full information.  
 .....
- 12.1 If the reporting entity recorded accrued retrospective premiums on insurance contracts on Line 13.3 of the asset schedule, Page 2, state the amount of corresponding liabilities recorded for:
- |   |  |          |
|---|--|----------|
| 12.11 Unpaid losses   |  | \$ ..... |
| 12.12 Unpaid underwriting expenses (including loss adjustment expenses) |  | \$ ..... |
- 12.2 Of the amount on Line 13.3 of the asset schedule, Page 2, state the amount which is secured by letters of credit, collateral and other funds: \$ .....
- 12.3 If the reporting entity underwrites commercial insurance risks, such as workers' compensation, are premium notes or promissory notes accepted from its insureds covering unpaid premiums and/or unpaid losses? Yes ( ) No (X) N/A ( )
- 12.4 If yes, provide the range of interest rates charged under such notes during the period covered by this statement:
- |            |  |        |
|------------|--|--------|
| 12.41 From |  | .....% |
| 12.42 To   |  | .....% |
- 12.5 Are letters of credit or collateral and other funds received from insureds being utilized by the reporting entity to secure premium notes or promissory notes taken by the reporting entity, or to secure any of the reporting entity's reported direct unpaid loss reserves, including unpaid losses under loss deductible features of commercial policies? Yes ( ) No (X)
- 12.6 If yes, state the amount thereof at December 31 of the current year:
- |                                  |  |          |
|----------------------------------|--|----------|
| 12.61 Letters of credit          |  | \$ ..... |
| 12.62 Collateral and other funds |  | \$ ..... |
- 13.1 Largest net aggregate amount insured in any one risk (excluding workers' compensation): \$ ..... 2,600,000
- 13.2 Does any reinsurance contract considered in the calculation of this amount include an aggregate limit of recovery without also including a reinstatement provision? Yes ( ) No (X)
- 13.3 State the number of reinsurance contracts (excluding individual facultative risk certificates, but including facultative programs, automatic facilities or facultative obligatory contracts) considered in the calculation of the amount. ..... 1
- 14.1 Is the company a cedant in a multiple cedant reinsurance contract? Yes (X) No ( )
- 14.2 If yes, please describe the method of allocating and recording reinsurance among the cedants:  
 See Notes to Financial Statements, Note 25, Intercompany Pooling Arrangements  
 .....
- 14.3 If the answer to 14.1 is yes, are the methods described in item 14.2 entirely contained in the respective multiple cedant reinsurance contracts? Yes (X) No ( )
- 14.4 If the answer to 14.3 is no, are the methods described in 14.2 entirely contained in written agreements? Yes (X) No ( )
- 14.5 If the answer to 14.4 is no, please explain:  
 .....
- 15.1 Has the reporting entity guaranteed any financed premium accounts? Yes ( ) No (X)
- 15.2 If yes, give full information.  
 .....

**GENERAL INTERROGATORIES**  
**PART 2 - PROPERTY AND CASUALTY INTERROGATORIES**

16.1 Does the reporting entity write any warranty business? Yes ( ) No (X)

If yes, disclose the following information for each of the following types of warranty coverage:

|                  | 1<br>Direct Losses<br>Incurred | 2<br>Direct Losses<br>Unpaid | 3<br>Direct Written<br>Premium | 4<br>Direct Premium<br>Unearned | 5<br>Direct Premium<br>Earned |
|------------------|--------------------------------|------------------------------|--------------------------------|---------------------------------|-------------------------------|
| 16.11 Home       | \$ .....                       | \$ .....                     | \$ .....                       | \$ .....                        | \$ .....                      |
| 16.12 Products   | \$ .....                       | \$ .....                     | \$ .....                       | \$ .....                        | \$ .....                      |
| 16.13 Automobile | \$ .....                       | \$ .....                     | \$ .....                       | \$ .....                        | \$ .....                      |
| 16.14 Other*     | \$ .....                       | \$ .....                     | \$ .....                       | \$ .....                        | \$ .....                      |

\* Disclose type of coverage:  
 .....  
 .....

17.1 Does the reporting entity include amounts recoverable on unauthorized reinsurance in Schedule F - Part 3 that it excludes from Schedule F - Part 5? Yes ( ) No (X)

Incurring but not reported losses on contracts in force prior to July 1, 1984, and not subsequently renewed are exempt from inclusion in Schedule F - Part 5.  
 Provide the following information for this exemption:

|       |   |          |
|-------|---|----------|
| 17.11 | Gross amount of unauthorized reinsurance in Schedule F - Part 3 excluded from Schedule F - Part 5 | \$ ..... |
| 17.12 | Unfunded portion of Interrogatory 17.11   | \$ ..... |
| 17.13 | Paid losses and loss adjustment expenses portion of Interrogatory 17.11                           | \$ ..... |
| 17.14 | Case reserves portion of Interrogatory 17.11  | \$ ..... |
| 17.15 | Incurred but not reported portion of Interrogatory 17.11  | \$ ..... |
| 17.16 | Unearned premium portion of Interrogatory 17.11   | \$ ..... |
| 17.17 | Contingent commission portion of Interrogatory 17.11  | \$ ..... |

Provide the following information for all other amounts included in Schedule F - Part 3 and excluded from Schedule F - Part 5, not included above.

|       |   |          |
|-------|---|----------|
| 17.18 | Gross amount of unauthorized reinsurance in Schedule F - Part 3 excluded from Schedule F - Part 5 | \$ ..... |
| 17.19 | Unfunded portion of Interrogatory 17.18   | \$ ..... |
| 17.20 | Paid losses and loss adjustment expenses portion of Interrogatory 17.18                           | \$ ..... |
| 17.21 | Case reserves portion of Interrogatory 17.18  | \$ ..... |
| 17.22 | Incurred but not reported portion of Interrogatory 17.18  | \$ ..... |
| 17.23 | Unearned premium portion of Interrogatory 17.18   | \$ ..... |
| 17.24 | Contingent commission portion of Interrogatory 17.18  | \$ ..... |



## FIVE-YEAR HISTORICAL DATA

Show amounts in whole dollars only, no cents; show percentages to one decimal place, i.e. 17.6.

|   | 1<br>2007   | 2<br>2006   | 3<br>2005     | 4<br>2004   | 5<br>2003   |
|---|-------------|-------------|---------------|-------------|-------------|
| <b>Gross Premiums Written (Page 8, Part 1B, Columns 1, 2 and 3)</b>   |             |             |               |             |             |
| 1. Liability lines (Lines 11.1, 11.2, 16, 17.1, 17.2, 18.1, 18.2, 19.1, 19.2 and 19.3, 19.4)  | 79,550,516  | 69,701,262  | 55,445,032    | 81,253,461  | 71,973,092  |
| 2. Property lines (Lines 1, 2, 9, 12, 21 and 26)  | 22,553,289  | 21,279,639  | 20,174,471    | 31,347,087  | 29,619,683  |
| 3. Property and liability combined lines (Lines 3, 4, 5, 8, 22 and 27)  | 85,823,504  | 72,964,713  | 62,596,942    | 80,470,073  | 64,728,128  |
| 4. All other lines (Lines 6, 10, 13, 14, 15, 23, 24, 28, 29 and 33)   | 860,358     | 772,836     | 1,177         | 2,361,648   | 2,169,718   |
| 5. Nonproportional reinsurance lines (Lines 30, 31 and 32)  |             |             |               |             |             |
| 6. Total (Line 34)  | 188,787,667 | 164,718,450 | 138,217,622   | 195,432,269 | 168,490,621 |
| <b>Net Premiums Written (Page 8, Part 1B, Column 6)</b>   |             |             |               |             |             |
| 7. Liability lines (Lines 11.1, 11.2, 16, 17.1, 17.2, 18.1, 18.2, 19.1, 19.2 and 19.3, 19.4)  |             |             | (13,633,037)  | 32,875,898  | 33,868,223  |
| 8. Property lines (Lines 1, 2, 9, 12, 21 and 26)  |             |             | (4,417,211)   | 12,095,246  | 12,241,495  |
| 9. Property and liability combined lines (Lines 3, 4, 5, 8, 22 and 27)  |             |             | (12,771,940)  | 25,402,909  | 23,877,062  |
| 10. All other lines (Lines 6, 10, 13, 14, 15, 23, 24, 28, 29 and 33)  |             |             | (1,664,834)   | 2,350,464   | 2,145,518   |
| 11. Nonproportional reinsurance lines (Line 30, 31 and 32)  |             |             |               |             |             |
| 12. Total (Line 34)   |             |             | (32,487,022)  | 72,724,517  | 72,132,298  |
| <b>Statement of Income (Page 4)</b>   |             |             |               |             |             |
| 13. Net underwriting gain (loss) (Line 8)   | (300)       | (300)       |               | 2,787,756   | (4,070,066) |
| 14. Net investment gain (loss) (Line 11)  | 1,857,302   | 1,614,041   | 5,361,328     | 13,677,511  | 14,713,216  |
| 15. Total other income (Line 15)  |             |             |               | (796,093)   | (160,913)   |
| 16. Dividends to policyholders (Line 17)  |             |             |               | 61,477      | 39,823      |
| 17. Federal and foreign income taxes incurred (Line 19)   | 490,623     | 597,302     | (9,173,034)   | 4,883,965   | 353,768     |
| 18. Net income (Line 20)  | 1,366,379   | 1,016,439   | 14,534,362    | 10,723,732  | 10,088,646  |
| <b>Balance Sheet Lines (Pages 2 and 3)</b>  |             |             |               |             |             |
| 19. Total admitted assets excluding protected cell business (Page 2, Line 24, Column 3)   | 37,032,712  | 38,961,733  | 38,659,055    | 307,249,967 | 300,905,673 |
| 20. Premiums and considerations (Page 2, Column 3)  |             |             |               |             |             |
| 20.1 In course of collection (Line 13.1)  |             |             |               | 1,645,422   | 1,955,662   |
| 20.2 Deferred and not yet due (Line 13.2)   |             |             |               | 15,524,076  | 15,119,768  |
| 20.3 Accrued retrospective premiums (Line 13.3)   |             |             |               |             |             |
| 21. Total liabilities excluding protected cell business (Page 3, Line 24)   | 1,344,639   | 1,138,819   | 3,170,088     | 191,612,047 | 193,310,057 |
| 22. Losses (Page 3, Line 1)   |             |             |               | 98,190,214  | 97,084,156  |
| 23. Loss adjustment expenses (Page 3, Line 3)   |             |             |               | 38,787,451  | 45,065,735  |
| 24. Unearned premiums (Page 3, Line 9)  |             |             |               | 32,487,025  | 32,120,716  |
| 25. Capital paid up (Page 3, Line 28 and Line 29)   | 3,374,043   | 3,374,043   | 3,374,043     | 3,374,043   | 3,374,043   |
| 26. Surplus as regards policyholders (Page 3, Line 35)  | 35,688,072  | 37,822,913  | 35,488,966    | 115,637,920 | 107,595,616 |
| <b>Cash Flow (Page 5)</b>   |             |             |               |             |             |
| 27. Net cash from operations (Line 11)  | 1,396,392   | (1,056,313) | (138,038,412) | 14,110,403  | 2,633,705   |
| <b>Risk-Based Capital Analysis</b>  |             |             |               |             |             |
| 28. Total adjusted capital  | 35,688,072  | 37,822,913  | 35,488,966    | 115,637,920 | 107,595,616 |
| 29. Authorized control level risk-based capital   | 2,853,849   | 2,831,532   | 2,809,393     | 11,933,863  | 1,259,547   |
| <b>Percentage Distribution of Cash, Cash Equivalents and Invested Assets</b><br>(Page 2, Column 3)<br>(Item divided by Page 2, Line 10, Column 3) x 100.0             |             |             |               |             |             |
| 30. Bonds (Line 1)  | 92.3        | 88.1        | 92.6          | 96.2        | 91.2        |
| 31. Stocks (Line 2.1 and Line 2.2)  | 3.5         | 3.3         |               | 3.2         | 5.4         |
| 32. Mortgage loans on real estate (Line 3.1 and Line 3.2)   |             |             |               |             |             |
| 33. Real estate (Lines 4.1, 4.2 and 4.3)  |             |             |               |             |             |
| 34. Cash, cash equivalents and short-term investments (Line 5)  | 4.3         | 8.6         | 7.1           | 0.5         | 3.2         |
| 35. Contact loans (Line 6)  |             |             |               |             |             |
| 36. Other invested assets (Line 7)  |             |             |               |             |             |
| 37. Receivables for securities (Line 8)   |             |             | 0.2           |             | 0.2         |
| 38. Aggregate write-ins for invested assets (Line 9)  |             |             |               |             |             |
| 39. Cash, cash equivalents and invested assets (Line 10)  | 100.0       | 100.0       | 100.0         | 100.0       | 100.0       |
| <b>Investments in Parent, Subsidiaries and Affiliates</b>   |             |             |               |             |             |
| 40. Affiliated bonds (Schedule D, Summary, Line 25, Column 1)   |             |             |               |             |             |
| 41. Affiliated preferred stocks (Schedule D, Summary, Line 39, Column 1)  |             |             |               |             |             |
| 42. Affiliated common stocks (Schedule D, Summary, Line 53, Column 1)   |             |             |               |             |             |
| 43. Affiliated short-term investments (subtotals included in Schedule DA, Part 2, Column 5 Line 7)  |             |             |               |             |             |
| 44. Affiliated mortgage loans on real estate  |             |             |               |             |             |
| 45. All other affiliated  |             |             |               |             |             |
| 46. Total of above Line 40 through Line 45  |             |             |               |             |             |
| 47. Percentage of investments in parent, subsidiaries and affiliates to surplus as regards policyholders (Line 46 above divided by Page 3, Column 1, Line 35 x 100.0) |             |             |               |             |             |

## FIVE-YEAR HISTORICAL DATA

(Continued)

|   | 1<br>2007   | 2<br>2006  | 3<br>2005    | 4<br>2004   | 5<br>2003    |
|---|-------------|------------|--------------|-------------|--------------|
| <b>Capital and Surplus Accounts (Page 4)</b>  |             |            |              |             |              |
| 48. Net unrealized capital gains (losses) (Line 24).....  | (12,188)    |            | (1,989,876)  | (672,302)   | 2,926,222    |
| 49. Dividends to stockholders (Line 35).....  | (3,500,000) |            | (61,000,000) | (1,700,000) | (12,627,000) |
| 50. Change in surplus as regards policyholders for the year (Line 38).....  | (2,134,841) | 2,333,947  | (80,148,954) | 8,042,299   | (4,839,561)  |
| <b>Gross Losses Paid (Page 9, Part 2, Columns 1 and 2)</b>  |             |            |              |             |              |
| 51. Liability lines (Lines 11.1, 11.2, 16, 17.1, 17.2, 18.1, 18.2, 19.1, 19.2 and 19.3, 19.4).....  | 43,729,915  | 37,441,246 | 36,495,659   | 55,093,748  | 60,843,840   |
| 52. Property lines (Lines 1, 2, 9, 12, 21 and 26).....  | 11,621,541  | 10,687,307 | 10,190,936   | 14,094,253  | 15,200,606   |
| 53. Property and liability combined lines (Lines 3, 4, 5, 8, 22 and 27).....  | 12,283,009  | 29,741,157 | 29,472,664   | 28,328,522  | 32,693,763   |
| 54. All other lines (Lines 6, 10, 13, 14, 15, 23, 24, 28, 29 and 33).....   | 20,460,752  | (1,895)    | (1,579)      | 247,153     | 175,753      |
| 55. Nonproportional reinsurance lines (Lines 30, 31, and 32).....   |             |            |              |             |              |
| 56. Total (Line 34).....  | 88,095,217  | 77,867,815 | 76,157,680   | 97,763,676  | 108,913,962  |
| <b>Net Losses Paid (Page 9, Part 2, Column 4)</b>   |             |            |              |             |              |
| 57. Liability lines (Lines 11.1, 11.2, 16, 17.1, 17.2, 18.1, 18.2, 19.1, 19.2 and 19.3, 19.4).....  |             |            | 77,657,158   | 20,302,087  | 26,297,566   |
| 58. Property lines (Lines 1, 2, 9, 12, 21 and 26).....  |             |            | 407,613      | 5,400,752   | 5,940,094    |
| 59. Property and liability combined lines (Lines 3, 4, 5, 8, 22 and 27).....  |             |            | 19,669,386   | 11,217,539  | 11,564,551   |
| 60. All other lines (Lines 6, 10, 13, 14, 15, 23, 24, 28, 29 and 33).....   |             |            | 456,058      | 283,487     | 222,903      |
| 61. Nonproportional reinsurance lines (Lines 30, 31, and 32).....   |             |            |              |             |              |
| 62. Total (Line 34).....  |             |            | 98,190,215   | 37,203,865  | 44,025,114   |
| <b>Operating Percentages (Page 4)</b><br>(Item divided by Page 4, Line 1) x 100.0   |             |            |              |             |              |
| 63. Premiums earned (Line 1).....   | 100.0       | 100.0      | 100.0        | 100.0       | 100.0        |
| 64. Losses incurred (Line 2).....   |             |            |              | 52.9        | 59.2         |
| 65. Loss expenses incurred (Line 3).....  |             |            |              | 10.7        | 12.5         |
| 66. Other underwriting expenses incurred (Line 4).....  |             |            |              | 32.8        | 33.9         |
| 67. Net underwriting gain (loss) (Line 8).....  |             |            |              | 3.9         | (5.7)        |
| <b>Other Percentages</b>  |             |            |              |             |              |
| 68. Other underwriting expenses to net premiums written (Page 4, Line 4 plus Line 5 minus Line 15 divided by Page 8, Part 1B, Column 6, Line 34 x 100.0).....                                 |             |            |              | 33.5        | 33.8         |
| 69. Losses and loss expenses incurred to premiums earned (Page 4, Line 2 plus Line 3 divided by Page 4, Line 1 x 100.0).....  |             |            |              | 63.6        | 71.7         |
| 70. Net premiums written to policyholders' surplus (Page 8, Part 1B, Column 6, Line 34 divided by Page 3, Line 35, Column 1 x 100.0).....   |             |            | (91.5)       | 62.9        | 67.0         |
| <b>One Year Loss Development (000 omitted)</b>  |             |            |              |             |              |
| 71. Development in estimated losses and loss expenses incurred prior to current year (Schedule P, Part 2 - Summary, Line 12, Column 11).....  |             |            |              | (1,126)     | 2,130        |
| 72. Percent of development of losses and loss expenses incurred to policyholders' surplus of prior year end (Line 71 above divided by Page 4, Line 21, Column 1 x 100.0).....                 |             |            |              | (1.0)       | 1.9          |
| <b>Two Year Loss Development (000 omitted)</b>  |             |            |              |             |              |
| 73. Development in estimated losses and loss expenses incurred 2 years before the current year and prior year (Schedule P, Part 2 - Summary, Line 12, Column 12).....                         |             |            |              | 2,648       | 4,734        |
| 74. Percent of development of losses and loss expenses incurred to reported policyholders' surplus of second prior year end (Line 73 above divided by Page 4, Line 21, Column 2 x 100.0)..... |             |            |              | 2.4         | 4.5          |

**SCHEDULE D - SUMMARY BY COUNTRY**

Long-Term Bonds and Stocks OWNED December 31 of Current Year

| Description  |                            | 1<br>Book/Adjusted<br>Carrying Value | 2<br>Fair Value | 3<br>Actual Cost | 4<br>Par Value of<br>Bonds |
|--|----------------------------|--------------------------------------|-----------------|------------------|----------------------------|
| <b>BONDS</b>   |                            |                                      |                 |                  |                            |
| Governments<br>(Including all obligations guaranteed<br>by governments)  | 1. United States           | 6,425,969                            | 6,662,468       | 6,411,555        | 6,415,000                  |
|  | 2. Canada                  |                                      |                 |                  |                            |
|  | 3. Other Countries         |                                      |                 |                  |                            |
|  | 4. Totals                  | 6,425,969                            | 6,662,468       | 6,411,555        | 6,415,000                  |
| States, Territories and Possessions<br>(Direct and guaranteed)   | 5. United States           | 1,049,938                            | 1,075,610       | 1,059,020        | 1,000,000                  |
|  | 6. Canada                  |                                      |                 |                  |                            |
|  | 7. Other Countries         |                                      |                 |                  |                            |
|  | 8. Totals                  | 1,049,938                            | 1,075,610       | 1,059,020        | 1,000,000                  |
| Political Subdivisions of States,<br>Territories and Possessions<br>(Direct and guaranteed)  | 9. United States           | 6,358,541                            | 6,520,609       | 6,479,584        | 5,550,000                  |
|  | 10. Canada                 |                                      |                 |                  |                            |
|  | 11. Other Countries        |                                      |                 |                  |                            |
|  | 12. Totals                 | 6,358,541                            | 6,520,609       | 6,479,584        | 5,550,000                  |
| Special revenue and special assessment<br>obligations and all non-guaranteed<br>obligations of agencies and authorities of<br>governments and their political subdivisions | 13. United States          | 2,843,304                            | 2,896,098       | 2,895,487        | 2,550,000                  |
|  | 14. Canada                 |                                      |                 |                  |                            |
|  | 15. Other Countries        |                                      |                 |                  |                            |
|  | 16. Totals                 | 2,843,304                            | 2,896,098       | 2,895,487        | 2,550,000                  |
| Public Utilities (unaffiliated)  | 17. United States          |                                      |                 |                  |                            |
|  | 18. Canada                 |                                      |                 |                  |                            |
|  | 19. Other Countries        |                                      |                 |                  |                            |
|  | 20. Totals                 |                                      |                 |                  |                            |
| Industrial and Miscellaneous and Credit Tenant<br>Loans (unaffiliated)   | 21. United States          | 15,169,813                           | 15,449,966      | 15,165,415       | 15,150,000                 |
|  | 22. Canada                 |                                      |                 |                  |                            |
|  | 23. Other Countries        | 996,539                              | 995,750         | 996,300          | 1,000,000                  |
|  | 24. Totals                 | 16,166,352                           | 16,445,716      | 16,161,715       | 16,150,000                 |
| Parent, Subsidiaries and Affiliates  | 25. Totals                 |                                      |                 |                  |                            |
|  | 26. Total Bonds            | 32,844,104                           | 33,600,501      | 33,007,361       | 31,665,000                 |
| <b>PREFERRED STOCKS</b>  |                            |                                      |                 |                  |                            |
| Public Utilities (unaffiliated)  | 27. United States          | 1,231,250                            | 1,231,250       | 1,250,000        |                            |
|  | 28. Canada                 |                                      |                 |                  |                            |
|  | 29. Other Countries        |                                      |                 |                  |                            |
|  | 30. Totals                 | 1,231,250                            | 1,231,250       | 1,250,000        |                            |
| Banks, Trust and Insurance Companies<br>(unaffiliated)   | 31. United States          |                                      |                 |                  |                            |
|  | 32. Canada                 |                                      |                 |                  |                            |
|  | 33. Other Countries        |                                      |                 |                  |                            |
|  | 34. Totals                 |                                      |                 |                  |                            |
| Industrial and Miscellaneous (unaffiliated)  | 35. United States          |                                      |                 |                  |                            |
|  | 36. Canada                 |                                      |                 |                  |                            |
|  | 37. Other Countries        |                                      |                 |                  |                            |
|  | 38. Totals                 |                                      |                 |                  |                            |
| Parent, Subsidiaries and Affiliates  | 39. Totals                 |                                      |                 |                  |                            |
|  | 40. Total Preferred Stocks | 1,231,250                            | 1,231,250       | 1,250,000        |                            |
| <b>COMMON STOCKS</b>   |                            |                                      |                 |                  |                            |
| Public Utilities (unaffiliated)  | 41. United States          |                                      |                 |                  |                            |
|  | 42. Canada                 |                                      |                 |                  |                            |
|  | 43. Other Countries        |                                      |                 |                  |                            |
|  | 44. Totals                 |                                      |                 |                  |                            |
| Banks, Trust and Insurance Companies<br>(unaffiliated)   | 45. United States          |                                      |                 |                  |                            |
|  | 46. Canada                 |                                      |                 |                  |                            |
|  | 47. Other Countries        |                                      |                 |                  |                            |
|  | 48. Totals                 |                                      |                 |                  |                            |
| Industrial and Miscellaneous (unaffiliated)  | 49. United States          |                                      |                 |                  |                            |
|  | 50. Canada                 |                                      |                 |                  |                            |
|  | 51. Other Countries        |                                      |                 |                  |                            |
|  | 52. Totals                 |                                      |                 |                  |                            |
| Parent, Subsidiaries and Affiliates  | 53. Totals                 |                                      |                 |                  |                            |
|  | 54. Total Common Stocks    |                                      |                 |                  |                            |
|  | 55. Total Stocks           | 1,231,250                            | 1,231,250       | 1,250,000        |                            |
|  | 56. Total Bonds and Stocks | 34,075,354                           | 34,831,751      | 34,257,361       |                            |

**SCHEDULE D - VERIFICATION BETWEEN YEARS**  
Bonds and Stocks

|   |            |  |            |
|---|------------|--|------------|
| 1. Book/adjusted carrying value of bonds and stocks, prior year           | 34,360,594 | 7. Amortization of premium                               | 172,370    |
| 2. Cost of bonds and stocks acquired, Column 7, Part 3                    | 4,398,453  | 8. Foreign Exchange Adjustment:                          |            |
| 3. Accrual of discount  | 47,588     | 8.1 Column 15, Part 1                                    |            |
| 4. Increase (decreased) by adjustment:                                    |            | 8.2 Column 19, Part 2, Section 1                         |            |
| 4.1 Column 12 minus Column 14, Part 1                                     |            | 8.3 Column 16, Part 2, Section 2                         |            |
| 4.2 Column 15 minus Column 17, Part 2, Section 1                          | (18,750)   | 8.4 Column 15, Part 4                                    |            |
| 4.3 Column 15, Part 2, Section 2  |            | 9. Book/adjusted carrying value at end of current period | 34,075,355 |
| 4.4 Column 11 minus Column 13, Part 4                                     | (18,750)   | 10. Total valuation allowance                            |            |
| 5. Total gain (loss), Column 19, Part 4                                   | 710        | 11. Subtotal (Line 9 plus Line 10)                       | 34,075,355 |
| 6. Deduct consideration for bonds and stocks disposed of Column 7, Part 4 | 4,540,870  | 12. Total nonadmitted amounts                            |            |
|   |            | 13. Statement value of bonds and stocks, current period  | 34,075,355 |

**Page 45**

Sch. P, Pt. 1, Summary

**NONE**

**Page 46**

Sch. P, Pt. 2, Summary

**NONE**

Sch. P, Pt. 3, Summary

**NONE**

Sch. P, Pt. 4, Summary

**NONE**

**SCHEDULE T - EXHIBIT OF PREMIUMS WRITTEN**

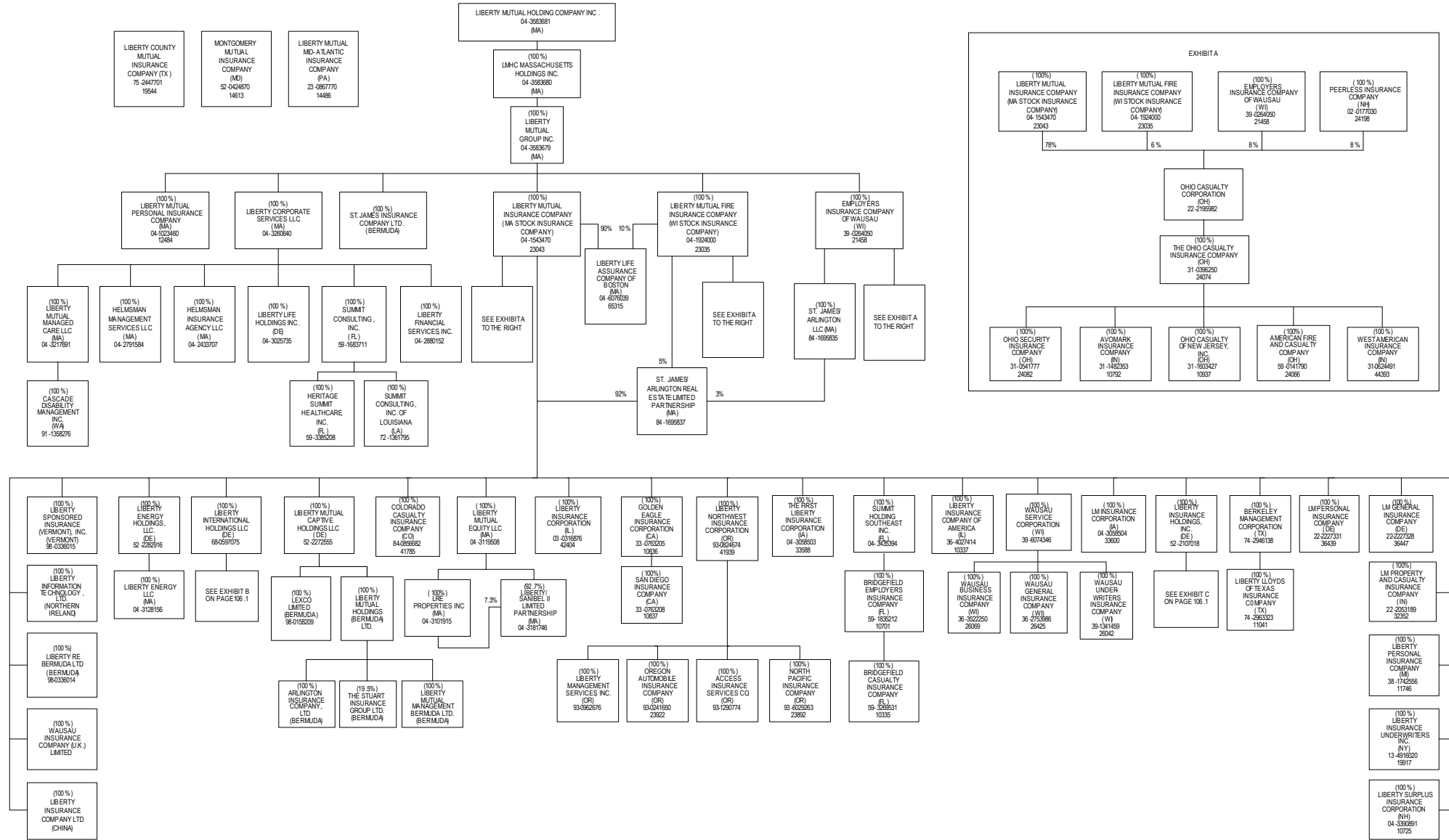
Allocated by States and Territories

| States, Etc.  | 1<br>Is Insurer Licensed?<br>(Yes or No) | Gross Premiums, Including Policy and Membership Fees Less Return Premiums and Premiums on Policies Not Taken |                             | 4<br>Dividends Paid or Credited to Policyholders on Direct Business | 5<br>Direct Losses Paid (Deducting Salvage) | 6<br>Direct Losses Incurred | 7<br>Direct Losses Unpaid | 8<br>Finance and Service Charges Not Included in Premiums | 9<br>Direct Premium Written for Federal Purchasing Groups (Included in Column 2) |
|---|--|--|-----------------------------|---|---|-----------------------------|---------------------------|---|--|
|   |  | 2<br>Direct Premiums Written   | 3<br>Direct Premiums Earned |   |   |                             |                           |   |  |
| 1. Alabama  | AL Yes                                   | 1,230,396  | 1,157,224                   |   | 780,778                                     | 265,869                     | 1,018,006                 |   |  |
| 2. Alaska   | AK Yes                                   | 951,655  | 834,110                     |   | 81,647                                      | 350,235                     | 431,997                   |   |  |
| 3. Arizona  | AZ Yes                                   | 4,287,452  | 3,746,718                   |   | 1,529,658                                   | 2,573,428                   | 2,991,866                 |   |  |
| 4. Arkansas   | AR Yes                                   | 1,874,125  | 1,550,726                   |   | 302,682                                     | 637,599                     | 609,807                   |   |  |
| 5. California   | CA Yes                                   | 717  | 717                         |   | 3,266,700                                   | 1,231,399                   | 30,811,345                |   |  |
| 6. Colorado   | CO Yes                                   | 1,059,692  | 772,355                     |   | 1,180,768                                   | 1,593,635                   | 1,169,555                 |   |  |
| 7. Connecticut  | CT Yes                                   | 8,792,576  | 8,098,937                   |   | 2,878,930                                   | 6,898,794                   | 11,740,011                |   |  |
| 8. Delaware   | DE Yes                                   | 470,847  | 508,765                     |   | 128,867                                     | 158,834                     | 1,142,252                 |   |  |
| 9. Dist. Columbia   | DC Yes                                   | 730,442  | 607,935                     |   | 121,180                                     | 223,268                     | 276,954                   |   |  |
| 10. Florida   | FL Yes                                   | 3,450,711  | 2,960,834                   |   | 614,681                                     | 447,627                     | 4,160,146                 |   |  |
| 11. Georgia   | GA Yes                                   | 1,597,688  | 1,466,866                   |   | 504,931                                     | 5,965                       | 430,778                   |   |  |
| 12. Hawaii  | HI No                                    |  |                             |   |   |                             |                           |   |  |
| 13. Idaho   | ID Yes                                   | 1,239,475  | 1,085,520                   |   | 613,767                                     | (83,232)                    | 476,943                   |   |  |
| 14. Illinois  | IL Yes                                   | 6,045,079  | 5,848,064                   |   | 3,151,164                                   | 3,537,515                   | 5,569,076                 |   |  |
| 15. Indiana   | IN Yes                                   | 4,188,731  | 4,286,662                   |   | 2,437,821                                   | 1,698,967                   | 2,943,261                 |   |  |
| 16. Iowa  | IA Yes                                   | 386,114  | 411,189                     |   | 293,023                                     | 162,145                     | 1,377,234                 |   |  |
| 17. Kansas  | KS Yes                                   | 1,009,765  | 1,071,221                   |   | 370,648                                     | 240,924                     | 493,318                   |   |  |
| 18. Kentucky  | KY Yes                                   | 14,443,169   | 13,516,978                  |   | 5,451,011                                   | 6,378,926                   | 7,998,204                 |   |  |
| 19. Louisiana   | LA Yes                                   | 719,335  | 518,480                     |   | 304,391                                     | 256,597                     | 229,385                   |   |  |
| 20. Maine   | ME No                                    |  |                             |   |   |                             |                           |   |  |
| 21. Maryland  | MD Yes                                   | 11,283,034   | 10,636,938                  | 50,831  | 4,839,908                                   | 8,320,155                   | 15,223,068                |   |  |
| 22. Massachusetts   | MA Yes                                   | 2,735,402  | 2,180,229                   |   | 1,300,146                                   | (318,454)                   | 4,648,337                 |   |  |
| 23. Michigan  | MI Yes                                   | 6,033,929  | 6,441,849                   |   | 5,280,351                                   | 5,787,720                   | 6,463,697                 |   |  |
| 24. Minnesota   | MN Yes                                   | 1,126,187  | 1,169,294                   |   | 716,357                                     | 1,528,591                   | 2,415,375                 |   |  |
| 25. Mississippi   | MS Yes                                   | 1,146,817  | 1,003,853                   |   | 1,107,404                                   | (1,154,620)                 | 421,687                   |   |  |
| 26. Missouri  | MO Yes                                   | 3,654,506  | 4,137,595                   |   | 3,696,403                                   | 6,485,998                   | 7,019,082                 |   |  |
| 27. Montana   | MT Yes                                   | 3,504  | 1,014                       |   |   | (49)                        | 293                       |   |  |
| 28. Nebraska  | NE Yes                                   | 129,109  | 120,407                     |   | 235,310                                     | 110,869                     | 191,257                   |   |  |
| 29. Nevada  | NV Yes                                   | 33,497   | 45,627                      |   | 2,484                                       | 5,773                       | 15,146                    |   |  |
| 30. New Hampshire   | NH No                                    |  |                             |   |   |                             |                           |   |  |
| 31. New Jersey  | NJ Yes                                   | 13,420,201   | 12,641,567                  | 188,320   | 5,420,947                                   | 6,721,643                   | 25,873,289                |   |  |
| 32. New Mexico  | NM Yes                                   | 971,644  | 821,056                     |   | 140,808                                     | 398,344                     | 506,008                   |   |  |
| 33. New York  | NY Yes                                   | 7,019,110  | 6,340,488                   |   | 1,073,701                                   | 5,060,005                   | 7,939,418                 |   |  |
| 34. North Carolina  | NC Yes                                   | 11,892,171   | 11,439,746                  | 486   | 5,452,454                                   | 8,074,345                   | 10,864,819                |   |  |
| 35. North Dakota  | ND Yes                                   | 41,179   | 63,282                      |   | 500   | (6,899)                     | 15,516                    |   |  |
| 36. Ohio  | OH Yes                                   | 8,654,448  | 8,499,337                   |   | 3,446,001                                   | 3,223,664                   | 3,089,572                 |   |  |
| 37. Oklahoma  | OK Yes                                   | 4,250,223  | 3,911,058                   |   | 2,006,950                                   | 1,796,470                   | 1,061,278                 |   |  |
| 38. Oregon  | OR Yes                                   | 2,278,925  | 1,636,647                   |   | 509,637                                     | 882,112                     | 823,798                   |   |  |
| 39. Pennsylvania  | PA Yes                                   | 34,442,436   | 33,274,631                  |   | 19,463,228                                  | 17,804,855                  | 62,397,024                |   |  |
| 40. Rhode Island  | RI Yes                                   | 31,779   | 31,150                      |   |   | 3,450                       | 5,420                     |   |  |
| 41. South Carolina  | SC Yes                                   | 6,041,298  | 5,409,303                   |   | 1,737,980                                   | 2,051,108                   | 4,394,688                 | 2,000   |  |
| 42. South Dakota  | SD Yes                                   | (6)  | 1,953                       |   |   | (219)                       | 1,009                     |   |  |
| 43. Tennessee   | TN Yes                                   | 1,521,620  | 1,277,049                   |   | 449,350                                     | 950,023                     | 1,185,128                 |   |  |
| 44. Texas   | TX Yes                                   | 3,762,886  | 3,415,759                   |   | 1,018,797                                   | 1,498,254                   | 2,104,438                 |   |  |
| 45. Utah  | UT Yes                                   | 1,355,394  | 1,022,868                   |   | 504,418                                     | 456,763                     | 315,149                   |   |  |
| 46. Vermont   | VT No                                    |  |                             |   |   |                             |                           |   |  |
| 47. Virginia  | VA Yes                                   | 4,803,912  | 4,234,587                   | 30,552  | 2,749,676                                   | 3,409,802                   | 4,558,313                 |   |  |
| 48. Washington  | WA Yes                                   | 6,152,817  | 4,318,040                   |   | 979,343                                     | 1,301,639                   | 2,562,898                 |   |  |
| 49. West Virginia   | WV Yes                                   | 770,842  | 722,422                     |   | 45,582                                      | (33,469)                    | 393,098                   |   |  |
| 50. Wisconsin   | WI Yes                                   | 2,535,925  | 2,726,535                   | 340,151   | 1,462,342                                   | 1,558,432                   | 2,228,506                 |   |  |
| 51. Wyoming   | WY Yes                                   | 215,500  | 228,222                     |   | 20,491                                      | 1,001,164                   | 1,067,506                 |   |  |
| 52. American Samoa  | AS No                                    |  |                             |   |   |                             |                           |   |  |
| 53. Guam  | GU No                                    |  |                             |   |   |                             |                           |   |  |
| 54. Puerto Rico   | PR No                                    |  |                             |   |   |                             |                           |   |  |
| 55. U. S. Virgin Islands  | VI No                                    |  |                             |   |   |                             |                           |   |  |
| 56. Northern Mariana Islands  | MP No                                    |  |                             |   |   |                             |                           |   |  |
| 57. Canada  | CN No                                    |  |                             |   |   |                             |                           |   |  |
| 58. Aggregate other alien   | OT XXX                                   |  |                             |   |   |                             |                           |   |  |
| 59. Totals  | (a) 47                                   | 188,786,258  | 176,195,807                 | 610,340   | 87,673,215                                  | 103,495,964                 | 241,654,955               | 2,000   |  |
| <b>DETAILS OF WRITE-INS</b>   |  |  |                             |   |   |                             |                           |   |  |
| 5801  | XXX                                      |  |                             |   |   |                             |                           |   |  |
| 5802  | XXX                                      |  |                             |   |   |                             |                           |   |  |
| 5803  | XXX                                      |  |                             |   |   |                             |                           |   |  |
| 5898. Summary of remaining write-ins for Line 58 from overflow page       | XXX                                      |  |                             |   |   |                             |                           |   |  |
| 5899. Totals (Line 5801 through Line 5803 plus Line 5898) (Line 58 above) | XXX                                      |  |                             |   |   |                             |                           |   |  |

Explanation of basis of allocation of premiums by states, etc.

(a) Insert the number of yes responses except for Canada and Other Alien.

ANNUAL STATEMENT FOR THE YEAR 2007 OF THE AMERICAN FIRE AND CASUALTY COMPANY  
 SCHEDULE Y - INFORMATION CONCERNING ACTIVITIES OF INSURER MEMBERS OF A HOLDING COMPANY GROUP  
 PART 1 - ORGANIZATIONAL CHART



# Property and Casualty

## Annual Statement Blank Alphabetical Index

|   |     |  |     |
|---|-----|--|-----|
| Assets .....  | 2   | Schedule DB - Part E - Section 1 .....   | E22 |
| Cash Flow .....   | 5   | Schedule DB - Part E - Verification Between Years .....  | 31  |
| Exhibit of Capital Gains (Losses) .....                 | 12  | Schedule DB - Part F - Section 1 .....   | 32  |
| Exhibit of Net Investment Income .....                  | 12  | Schedule DB - Part F - Section 2 .....   | 33  |
| Exhibit of Nonadmitted Assets .....                     | 13  | Schedule E - Part 1 - Cash .....   | E23 |
| Exhibit of Premiums and Losses (State Page) .....       | 20  | Schedule E - Part 2 - Cash Equivalents .....   | E24 |
| Five-Year Historical Data .....                         | 18  | Schedule E - Part 3 - Special Deposits .....   | E25 |
| General Interrogatories .....                           | 16  | Schedule F - Part 1 .....  | 34  |
| Jurat Page .....  | 1   | Schedule F - Part 2 .....  | 35  |
| Liabilities, Surplus and Other Funds .....              | 3   | Schedule F - Part 3 .....  | 36  |
| Notes to Financial Statements .....                     | 14  | Schedule F - Part 4 .....  | 37  |
| Overflow Page for Write-ins .....                       | 109 | Schedule F - Part 5 .....  | 38  |
| Schedule A - Part 1 .....                               | E01 | Schedule F - Part 6 .....  | 39  |
| Schedule A - Part 2 .....                               | E02 | Schedule F - Part 7 .....  | 40  |
| Schedule A - Part 3 .....                               | E03 | Schedule F - Part 8 .....  | 41  |
| Schedule A - Verification Between Years .....           | 21  | Schedule H - Accident and Health Exhibit - Part 1 .....  | 42  |
| Schedule B - Part 1 .....                               | E04 | Schedule H - Part 5 - Health Claims .....  | 44  |
| Schedule B - Part 2 .....                               | E05 | Schedule H - Parts 2, 3, and 4 .....   | 43  |
| Schedule B - Verification Between Years .....           | 21  | Schedule P - Part 1 - Analysis of Losses and Loss Expenses .....   | 45  |
| Schedule BA - Part 1 .....                              | E06 | Schedule P - Part 1A - Homeowners/Farmowners .....   | 47  |
| Schedule BA - Part 2 .....                              | E07 | Schedule P - Part 1B - Private Passenger AutoLiability/Medical .....   | 48  |
| Schedule BA - Verification Between Years .....          | 21  | Schedule P - Part 1C - Commercial Auto/Truck Liability/Medical .....   | 49  |
| Schedule D - Part 1 .....                               | E08 | Schedule P - Part 1D - Workers' Compensation .....   | 50  |
| Schedule D - Part 1A - Section 1 .....                  | 23  | Schedule P - Part 1E - Commercial Multiple Peril .....   | 51  |
| Schedule D - Part 1A - Section 2 .....                  | 26  | Schedule P - Part 1F - Section 1 - Medical Malpractice - Occurrence .....  | 52  |
| Schedule D - Part 2 - Section 1 .....                   | E09 | Schedule P - Part 1F - Section 2 - Medical Malpractice - Claims Made .....   | 53  |
| Schedule D - Part 2 - Section 2 .....                   | E10 | Schedule P - Part 1G - Special Liability (Ocean Marine, Aircraft (All Perils),<br>Boiler and Machinery) .....        | 54  |
| Schedule D - Part 3 .....                               | E11 | Schedule P - Part 1H - Section 1 - Other Liability - Occurrence .....  | 55  |
| Schedule D - Part 4 .....                               | E12 | Schedule P - Part 1H - Section 2 - Other Liability - Claims Made .....   | 56  |
| Schedule D - Part 5 .....                               | E13 | Schedule P - Part 1I - Special Property (Fire, Allied Lines, Inland Marine, Earthquake,<br>Burglary and Theft) ..... | 57  |
| Schedule D - Part 6 - Section 1 .....                   | E14 | Schedule P - Part 1J - Auto Physical Damage .....  | 58  |
| Schedule D - Part 6 - Section 2 .....                   | E14 | Schedule P - Part 1K - Fidelity/Surety .....   | 59  |
| Schedule D - Summary by Country .....                   | 22  | Schedule P - Part 1L - Other (Including Credit, Accident and Health) .....   | 60  |
| Schedule D - Verification Between Years .....           | 22  | Schedule P - Part 1M - International .....   | 61  |
| Schedule DA - Part 1 .....                              | E15 | Schedule P - Part 1N - Reinsurance .....   | 62  |
| Schedule DA - Part 2 - Verification Between Years ..... | 29  | Schedule P - Part 1O - Reinsurance .....   | 63  |
| Schedule DB - Part A - Section 1 .....                  | E16 | Schedule P - Part 1P - Reinsurance .....   | 64  |
| Schedule DB - Part A - Section 2 .....                  | E16 | Schedule P - Part 1R - Section 1 - Products Liability - Occurrence .....   | 65  |
| Schedule DB - Part A - Section 3 .....                  | E17 | Schedule P - Part 1R - Section 2 - Products Liability - Claims Made .....  | 66  |
| Schedule DB - Part A - Verification Between Years ..... | 30  | Schedule P - Part 1S - Financial Guaranty/Mortgage Guaranty .....  | 67  |
| Schedule DB - Part B - Section 1 .....                  | E17 | Schedule P - Part 2A - Homeowners/Farmowners .....   | 68  |
| Schedule DB - Part B - Section 2 .....                  | E18 | Schedule P - Part 2B - Private Passenger Auto Liability/Medical .....  | 68  |
| Schedule DB - Part B - Section 3 .....                  | E18 | Schedule P - Part 2C - Commercial Auto/Truck Liability/Medical .....   | 68  |
| Schedule DB - Part B - Verification Between Years ..... | 30  | Schedule P - Part 2D - Workers' Compensation .....   | 68  |
| Schedule DB - Part C - Section 1 .....                  | E19 | Schedule P - Part 2E - Commercial Multiple Peril .....   | 68  |
| Schedule DB - Part C - Section 2 .....                  | E19 | Schedule P - Part 2F - Section 1 - Medical Malpractice - Occurrence .....  | 69  |
| Schedule DB - Part C - Section 3 .....                  | E20 | Schedule P - Part 2F - Section 2 - Medical Malpractice - Claims Made .....   | 69  |
| Schedule DB - Part C - Verification Between Years ..... | 31  | Schedule P - Part 2G - Special Liability (Ocean Marine, Aircraft (All Perils),<br>Boiler and Machinery) .....        | 69  |
| Schedule DB - Part D - Section 1 .....                  | E20 | Schedule P - Part 2H - Section 1 - Other Liability - Occurrence .....  | 69  |
| Schedule DB - Part D - Section 2 .....                  | E21 | Schedule P - Part 2H - Section 2 - Other Liability - Claims Made .....   | 69  |
| Schedule DB - Part D - Section 3 .....                  | E21 |  |     |
| Schedule DB - Part D - Verification Between Years ..... | 31  |  |     |

# Property and Casualty

## Annual Statement Blank Alphabetical Index (cont.)

|   |   |
|---|---|
| <p>Schedule P - Part 2I - Special Property (Fire, Allied Lines, Inland Marine, Earthquake, Burglary and Theft) ..... 70</p> <p>Schedule P - Part 2J - Auto Physical Damage ..... 70</p> <p>Schedule P - Part 2K - Fidelity/Surety ..... 70</p> <p>Schedule P - Part 2L - Other (Including Credit, Accident and Health) ..... 70</p> <p>Schedule P - Part 2M - International ..... 70</p> <p>Schedule P - Part 2N - Reinsurance ..... 71</p> <p>Schedule P - Part 2O - Reinsurance ..... 71</p> <p>Schedule P - Part 2P - Reinsurance ..... 71</p> <p>Schedule P - Part 2R - Section 1 - Products Liability - Occurrence ..... 72</p> <p>Schedule P - Part 2R - Section 2 - Products Liability - Claims Made ..... 72</p> <p>Schedule P - Part 2S - Financial Guaranty/Mortgage Guaranty ..... 72</p> <p>Schedule P - Part 3A - Homeowners/Farmowners ..... 73</p> <p>Schedule P - Part 3B - Private Passenger Auto Liability/Medical ..... 73</p> <p>Schedule P - Part 3C - Commercial Auto/Truck Liability/Medical ..... 73</p> <p>Schedule P - Part 3D - Workers' Compensation ..... 73</p> <p>Schedule P - Part 3E - Commercial Multiple Peril ..... 73</p> <p>Schedule P - Part 3F - Section 1 - Medical Malpractice - Occurrence ..... 74</p> <p>Schedule P - Part 3F - Section 2 - Medical Malpractice - Claims Made ..... 74</p> <p>Schedule P - Part 3G - Special Liability (Ocean Marine, Aircraft (All Perils), Boiler and Machinery) ..... 74</p> <p>Schedule P - Part 3H - Section 1 - Other Liability - Occurrence ..... 74</p> <p>Schedule P - Part 3H - Section 2 - Other Liability - Claims Made ..... 74</p> <p>Schedule P - Part 3I - Special Property (Fire, Allied Lines, Inland Marine, Earthquake, Burglary and Theft) ..... 75</p> <p>Schedule P - Part 3J - Auto Physical Damage ..... 75</p> <p>Schedule P - Part 3K - Fidelity/Surety ..... 75</p> <p>Schedule P - Part 3L - Other (Including Credit, Accident and Health) ..... 75</p> <p>Schedule P - Part 3M - International ..... 75</p> <p>Schedule P - Part 3N - Reinsurance ..... 76</p> <p>Schedule P - Part 3O - Reinsurance ..... 76</p> <p>Schedule P - Part 3P - Reinsurance ..... 76</p> <p>Schedule P - Part 3R - Section 1 - Products Liability - Occurrence ..... 77</p> <p>Schedule P - Part 3R - Section 2 - Products Liability - Claims Made ..... 77</p> <p>Schedule P - Part 3S - Financial Guaranty/Mortgage Guaranty ..... 77</p> <p>Schedule P - Part 4A - Homeowners/Farmowners ..... 78</p> <p>Schedule P - Part 4B - Private Passenger Auto Liability/Medical ..... 78</p> <p>Schedule P - Part 4C - Commercial Auto/Truck Liability/Medical ..... 78</p> <p>Schedule P - Part 4D - Workers' Compensation ..... 78</p> <p>Schedule P - Part 4E - Commercial Multiple Peril ..... 78</p> <p>Schedule P - Part 4F - Section 1 - Medical Malpractice - Occurrence ..... 79</p> <p>Schedule P - Part 4F - Section 2 - Medical Malpractice - Claims Made ..... 79</p> <p>Schedule P - Part 4G - Special Liability (Ocean Marine, Aircraft (All Perils), Boiler and Machinery) ..... 79</p> <p>Schedule P - Part 4H - Section 1 - Other Liability - Occurrence ..... 79</p> <p>Schedule P - Part 4H - Section 2 - Other Liability - Claims Made ..... 79</p> <p>Schedule P - Part 3I - Special Property (Fire, Allied Lines, Inland Marine, Earthquake, Burglary and Theft) ..... 75</p> <p>Schedule P - Part 3J - Auto Physical Damage ..... 75</p> <p>Schedule P - Part 3K - Fidelity/Surety ..... 75</p> <p>Schedule P - Part 3L - Other (Including Credit, Accident and Health) ..... 75</p> <p>Schedule P - Part 3M - International ..... 75</p> <p>Schedule P - Part 3N - Reinsurance ..... 76</p> <p>Schedule P - Part 3O - Reinsurance ..... 76</p> <p>Schedule P - Part 3P - Reinsurance ..... 76</p> | <p>Schedule P - Part 4R - Section 1 - Products Liability - Occurrence ..... 82</p> <p>Schedule P - Part 4R - Section 2 - Products Liability - Claims Made ..... 82</p> <p>Schedule P - Part 4S - Financial Guaranty/Mortgage Guaranty ..... 82</p> <p>Schedule P - Part 5A - Homeowners/Farmowners ..... 83</p> <p>Schedule P - Part 5B - Private Passenger Auto Liability/Medical ..... 84</p> <p>Schedule P - Part 5C - Commercial Auto/Truck Liability/Medical ..... 85</p> <p>Schedule P - Part 5D - Workers' Compensation ..... 86</p> <p>Schedule P - Part 5E - Commercial Multiple Peril ..... 87</p> <p>Schedule P - Part 5F - Section 1 - Medical Malpractice - Occurrence ..... 88</p> <p>Schedule P - Part 5F - Section 2 - Medical Malpractice - Claims Made ..... 89</p> <p>Schedule P - Part 5H - Section 1 - Other Liability - Occurrence ..... 90</p> <p>Schedule P - Part 5H - Section 2 - Other Liability - Claims Made ..... 91</p> <p>Schedule P - Part 5R - Section 1 - Products Liability - Occurrence ..... 92</p> <p>Schedule P - Part 5R - Section 2 - Products Liability - Claims Made ..... 93</p> <p>Schedule P - Part 6C - Commercial Auto/Truck Liability/Medical ..... 94</p> <p>Schedule P - Part 6D - Workers' Compensation ..... 94</p> <p>Schedule P - Part 6E - Commercial Multiple Peril ..... 95</p> <p>Schedule P - Part 6H - Section 1 - Other Liability - Occurrence ..... 95</p> <p>Schedule P - Part 6H - Section 2 - Other Liability - Claims Made ..... 96</p> <p>Schedule P - Part 6M - International ..... 96</p> <p>Schedule P - Part 6N - Reinsurance ..... 97</p> <p>Schedule P - Part 6O - Reinsurance ..... 97</p> <p>Schedule P - Part 6R - Section 1 - Products Liability - Occurrence ..... 98</p> <p>Schedule P - Part 6R - Section 2 - Products Liability - Claims Made ..... 98</p> <p>Schedule P - Part 7A - Primary Loss Sensitive Contracts ..... 99</p> <p>Schedule P - Part 7B - Reinsurance Loss Sensitive Contracts ..... 101</p> <p>Schedule P - Parts 2, 3, and 4 - Summary ..... 46</p> <p>Schedule P Interrogatories ..... 103</p> <p>Schedule T - Exhibit of Premiums Written ..... 104</p> <p>Schedule T - Part 2 - Interstate Compact ..... 105</p> <p>Schedule Y - Information Concerning Activities of Insurer Members of a Holding Company Group ..... 106</p> <p>Schedule Y - Part 2 - Summary of Insurer's Transactions with Any Affiliates ..... 107</p> <p>Statement of Income ..... 4</p> <p>Summary Investment Schedule ..... 15</p> <p>Supplemental Exhibits and Schedules Interrogatories ..... 108</p> <p>Underwriting and Investment Exhibit Part 1 ..... 6</p> <p>Underwriting and Investment Exhibit Part 1A ..... 7</p> <p>Underwriting and Investment Exhibit Part 1B ..... 8</p> <p>Underwriting and Investment Exhibit Part 2 ..... 9</p> <p>Underwriting and Investment Exhibit Part 2A ..... 10</p> <p>Underwriting and Investment Exhibit Part 3 ..... 11</p> |
|---|---|